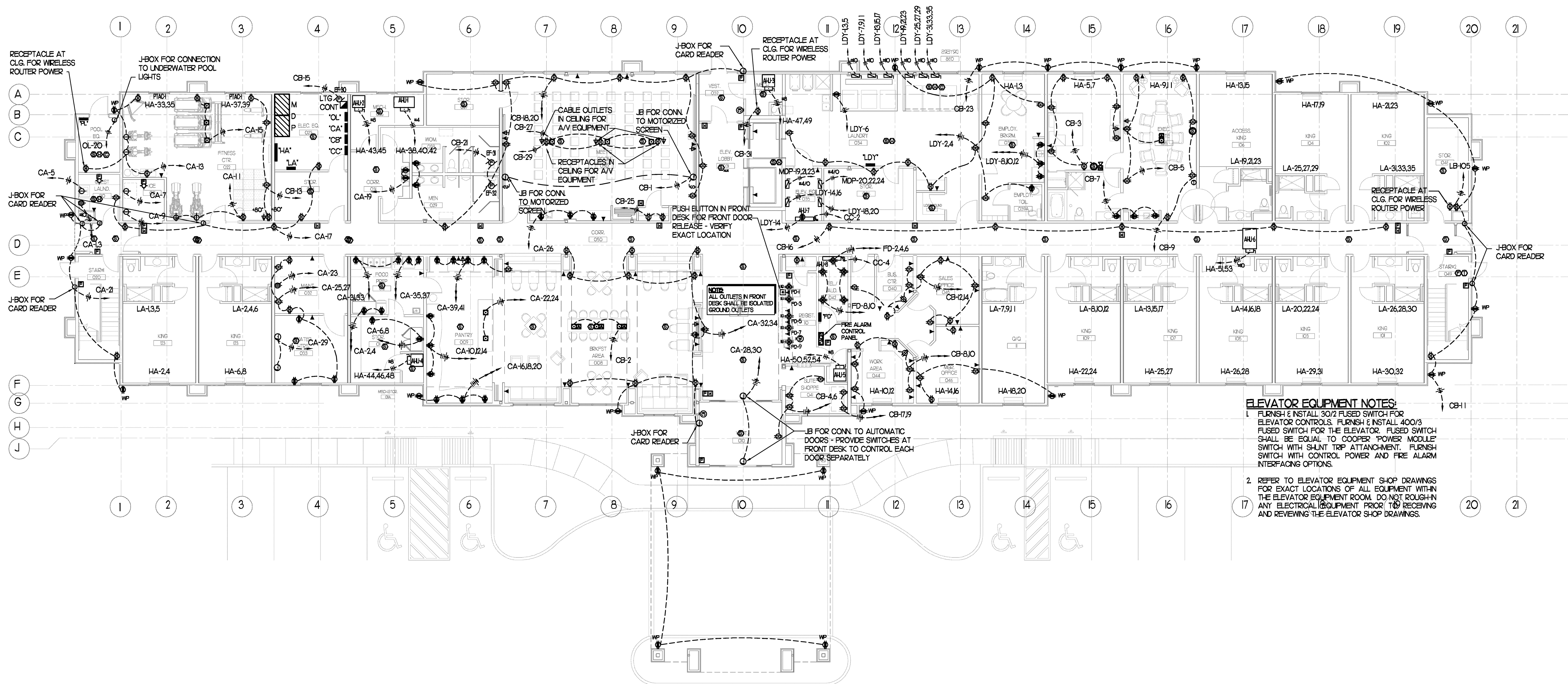
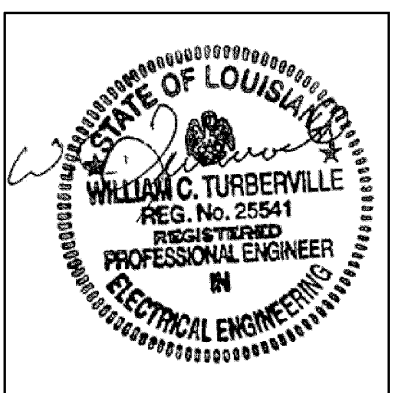


Richard Molenaar
ARCHITECT



GROUND FLOOR POWER PLAN
1/8" = 1' - 0"



PROJECT NAME:
Hampton Inn
Main Street
West Monroe, Louisiana

SHEET TITLE:
GROUND FLOOR POWER PLAN

Scale: 3/32" = 1' - 0"

PROJECT NO. 09017 LATEST REVISION:
DRAWN BY: SMJ CHECKED BY: SMJ SHEET NUMBER:
DATE: 09/13/10

E201