

| GRILLES, REGISTERS AND DIFFUSERS |               |  |
|----------------------------------|---------------|--|
| TYPE                             | MFR. & MODEL  | REMARKS  |
| CD LAY-IN                        | PRICE ASDA    | ADJUSTABLE LOUVERED FACE, ALUMINUM CONSTRUCTION WITH 4 CONES, LAY-IN T-BAR FRAME (TYPE 3) AND OPPOSED BLADE DAMPERS.   |
| CD SURFACE                       | PRICE ASDA    | ADJUSTABLE LOUVERED FACE, ALUMINUM CONSTRUCTION WITH 4 CONES, SURFACE MOUNTING FRAME (TYPE 3), 12x12 OR 24x24 AMF FRAME FOR SURFACE MOUNTING, AND VCS3 OPPOSED BLADE DAMPERS.  |
| RAG/EAG CEILING                  | PRICE APDR    | FLUSH PERFORATED FACE, ALUMINUM FACEPLATE WITH MAXIMUM SQUARE NECK FOR PLENUM RETURN AND FRAME FOR LAY-IN CEILING OR SURFACE MOUNTING WITH 12x12 OR 24x24 AMF FRAME.           |
| SAR                              | PRICE 620-S   | DOUBLE DEFLECTION SIDEWALL, ALUMINUM CONSTRUCTION, 3/4" BLADE SPACING WITH FRONT BLADES PARALLEL TO THE SHORT DIRECTION, SURFACE MOUNTING FRAME AND VCS3 OPPOSED BLADE DAMPER. |
| RAG/EAG SIDEWALL                 | PRICE 635D    | FIXED LOUVERS (FULL FACE, NO FILLER PANELS) 1/2" SPACING AT 45° DEFLECTION, ALUMINUM CONSTRUCTION, FRAME FOR SURFACE MOUNTING.   |
| DG                               | PRICE ATG1-BF | HEAVY DUTY ALUMINUM DOOR GRILLE WITH SIGHTPROOF APPEARANCE AND FLAT BORDER FRAME BOTH SIDES.   |

#### NOTE:

- CONTRACTOR SHALL EXAMINE AND COORDINATE WITH ALL COMPONENTS OF BUILDING CONSTRUCTION PRIOR TO LOCATING & SETTING OF H.V.A.C. EQUIPMENT AND NOTIFY ARCHITECT OF ANY CONFLICT WHICH MAY INTERFERE WITH LOCATION OF EQUIPMENT, STRUCTURE OR WORK OF OTHER TRADES.
- CONTRACTOR SHALL COORDINATE W/ ARCHITECTURAL REFLECTED CEILING PLAN FOR VARIOUS CEILING TYPES AND SHALL BE RESPONSIBLE FOR FURNISHING TYPE OF FRAME STYLE NEEDED, I.E. LAY-IN OR SURFACE MOUNT.
- SMOKE DETECTOR SHALL BE FURNISHED, INSTALLED AND WRED BY THE MECHANICAL CONTRACTOR, IN THE RETURN AIR DUCTS OF ALL UNITS PER CODE, AND SHALL SHUT DOWN UNIT & SHALL CAUSE A VISUAL & AUDIBLE SIGNAL. SIMPLEX 4098-9687 W/ 4098-984 CONTROL STATION, & SHALL BE IDENTIFIED AS "AIR DUCT DETECTOR TROUBLE".
- REFRIGERANT PIPE SIZES SHALL BE AS RECOMMENDED BY THE EQUIPMENT MANUFACTURER.
- ALL AHU'S TO BE SET ON RAISED PLATFORMS.

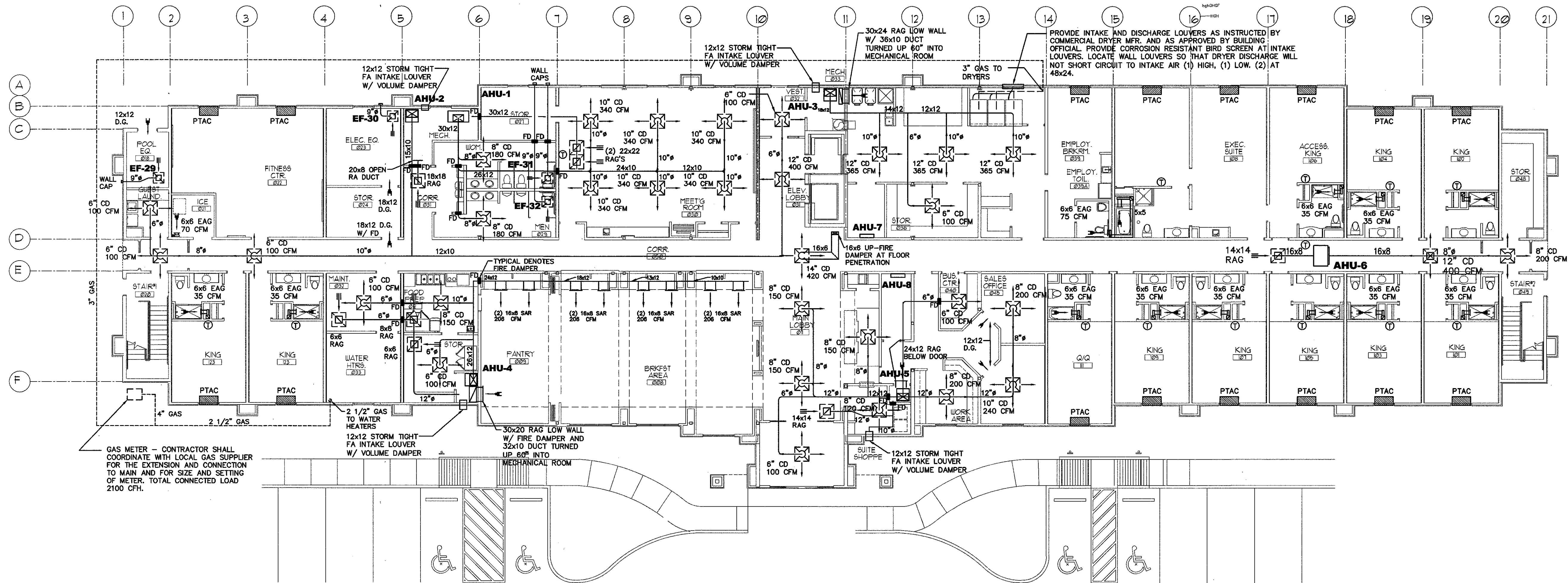
| GROUND FLR AIR BALANCE SCHEDULE |             |
|---------------------------------|-------------|
| ROOM EXHAUST                    | = 420 CFM   |
| PUBLIC RR EXH                   | = 500 CFM   |
| MISC. EXHAUST                   | = 585 CFM   |
| TOTAL EXHAUST                   | = 1,505 CFM |
| OSA THRU AC UNITS               | = 1,085 CFM |
| OSA THRU MJA UNIT               | = 420 CFM   |
| TOTAL OSA                       | = 1,505 CFM |
| BALANCED AIR FLOW               |             |

#### HEATING AND AIR CONDITIONING SCHEDULE

| AIR HANDLING UNIT |                  |           |            |               |                  |        |          |       |               |                             | CONDENSING UNIT       |        |              |            |          |  |
|-------------------|------------------|-----------|------------|---------------|------------------|--------|----------|-------|---------------|-----------------------------|-----------------------|--------|--------------|------------|----------|--|
| #                 | MFR. & MODEL     | TOTAL CFM | O.S.A. CFM | TOTAL COOLING | SENSIBLE COOLING | E.S.P. | VOLTAGE  | H.P.  | ELEC HT KW    | SINGLE POINT CONNECTION MCA | MFG & MODEL           | M.C.A. | COMP. R.L.A. | FAN F.L.A. | VOLTAGE  | REMARKS  |
| AHU-1             | TRANE TWE090E3   | 2400      | 450        | 76,500        | 58,100           | .8"    | 208/3/60 | 1.5   | 2-STAGE 18.71 | 72                          | CU-1 TRANE TTA073D3   | 31.1   | 22.4         | 3.1        | 208/3/60 | COMPLETE W/ WALL MOUNTED 2-STAGE HEAT, T'STAT WITH TIME DELAY AND HARD START KIT |
| AHU-2             | TRANE 4TEH3F30B  | 800       | 120        | 22,400        | 17,300           | .7"    | 208/1/60 | 1/3   | 5.76          | 38                          | CU-2 TRANE 4TTB3024A1 | 12.0   | 8.8          | 0.7        | 208/1/60 | COMPLETE W/ WALL MOUNTED T'STAT WITH TIME DELAY AND HARD START KIT.              |
| AHU-3             | TRANE 4TEH3F36B  | 1200      | 175        | 36,500        | 26,400           | .6"    | 208/1/60 | 1/2   | 5.76          | 40                          | CU-3 TRANE 4TTA3036A3 | 15.0   | 11.5         | 0.7        | 208/3/60 | COMPLETE W/ WALL MOUNTED T'STAT WITH TIME DELAY AND HARD START KIT.              |
| AHU-4             | TRANE 4TEH3F60B  | 2000      | 240        | 59,700        | 43,400           | .6"    | 208/3/60 | 1.0   | 7.20          | 37                          | CU-4 TRANE 4TTA3060A3 | 24.0   | 18.1         | 1.3        | 208/3/60 | COMPLETE W/ WALL MOUNTED T'STAT WITH TIME DELAY AND HARD START KIT.              |
| AHU-5             | TRANE 4TEH3F48B  | 1400      | 100        | 41,800        | 29,500           | .7"    | 208/3/60 | 3/4   | 7.2           | 37                          | CU-5 TRANE 4TTA3042A3 | 18.0   | 13.5         | 1.3        | 208/3/60 | COMPLETE W/ WALL MOUNTED T'STAT WITH TIME DELAY AND HARD START KIT.              |
| AHU-6             | FIRST CO. 18HX-5 | 600       | 80         | 17,300        | 13,300           | .2"    | 240/1/60 | 1/8   | 5.0           | 30                          | CU-6 TRANE 4TTB3018A1 | 9.0    | 6.4          | 0.7        | 208/1/60 | COMPLETE W/ WALL MOUNTED T'STAT WITH TIME DELAY AND HARD START KIT.              |
| AHU-7             | SANYO KS0971     | 250       | 0          | 9,000         | 7,650            | .1"    | 115/1/60 | 13.8W |               |                             | CU-7 SANYO C0971      |        | 6.55         | 0.6        | 115/1/60 | COMPLETE W/ WALL MOUNTED T'STAT, WITH TIME DELAY AND HARD START KIT.             |
| AHU-8             | SANYO KS0971     | 250       | 0          | 9,000         | 7,650            | .1"    | 115/1/60 | 13.8W |               |                             | CU-8 SANYO C0971      |        | 6.55         | 0.6        | 115/1/60 | COMPLETE W/ WALL MOUNTED T'STAT, WITH TIME DELAY AND HARD START KIT.             |

#### AC UNIT ACCESSORIES:

- 7-DAY PROGRAMMABLE THERMOSTAT
- LOW AMBIENT CONTROL TO 30°
- HI-LO PRESSURE CUT-OFF
- FILTER/DRYERS
- LIQUID LINE SOLENOID
- HARDSTART KIT
- AUX. DRAIN PAN
- SMOKE DETECTOR IN RA DUCT



#### PTAC HEAT PUMP AIR CONDITIONER SCHEDULE

| MARK | TOTAL CFM | O.S.A. CFM | COOLING COIL DATA |      |                |      | ELECTRIC HEATER |                 | ELECTRICAL DATA (MCA) | EER  | MAX FUSE | REMARKS         |
|------|-----------|------------|-------------------|------|----------------|------|-----------------|-----------------|-----------------------|------|----------|-----------------|
|      |           |            | ENT. AIR DB F     | WB F | TOTAL CAPACITY | AMB  | KW              | VOLTAGE         |                       |      |          |                 |
| PTAC | 270       | 35         | 80°F              | 67°F | 8,900          | 95°F | 3.5             | 230/208V. /1/60 | 19.4 208/1/60         | 12.0 | 20 AMP   | AMANA PTH093E35 |
|      |           |            |                   |      |                |      |                 |                 |                       |      |          |                 |

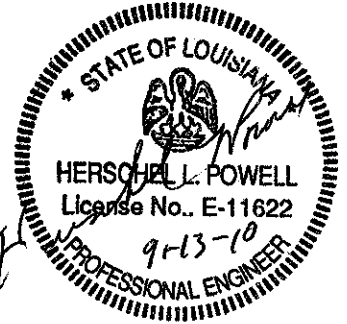
ACCESSORIES: (1) ELECTRICAL SUBBASE, (2) CONDENSATION EVAPORATION SYSTEM AND SECONDARY DRAIN KIT, EXTEND AND CONNECT TO DRAIN PIPE PROVIDED BY PLUMBER, COORDINATE WITH PLUMBER. (3) CONTROLS SHALL PREVENT OPERATION OF COMPRESSOR AND ELECTRIC HEAT AT THE SAME TIME, (4) ARCHITECTURAL DECORATIVE LOUVER, AS MANUFACTURED BY RELIABLE PRODUCTS. LOUVERS SHALL BE CONSTRUCTED OF ALUMINUM WITH CUSTOM FINISH AS DIRECTED BY THE ARCHITECT, (5) REMOTE MOUNTED THERMOSTAT. EQUAL TO INNOVON MODEL E4-SMART DIGITAL THERMOSTAT. REMOTE THERMOSTAT DOES NOT REQUIRE CONDUIT.

#### GROUND FLOOR PLAN

3/32"=1'-0"



Richard Molenaar  
ARCHITECT



PROJECT NAME:

**Hampton Inn**  
Main Street  
West Monroe, Louisiana

SHEET TITLE:

**GROUND FLOOR  
HVAC**

PROJECT NO.

PROJ#

LATEST REVISION:

DRAWN BY:

RHP

CHECKED BY:

HLP

SHEET NUMBER:

DATE:

09-13-10

**M101**