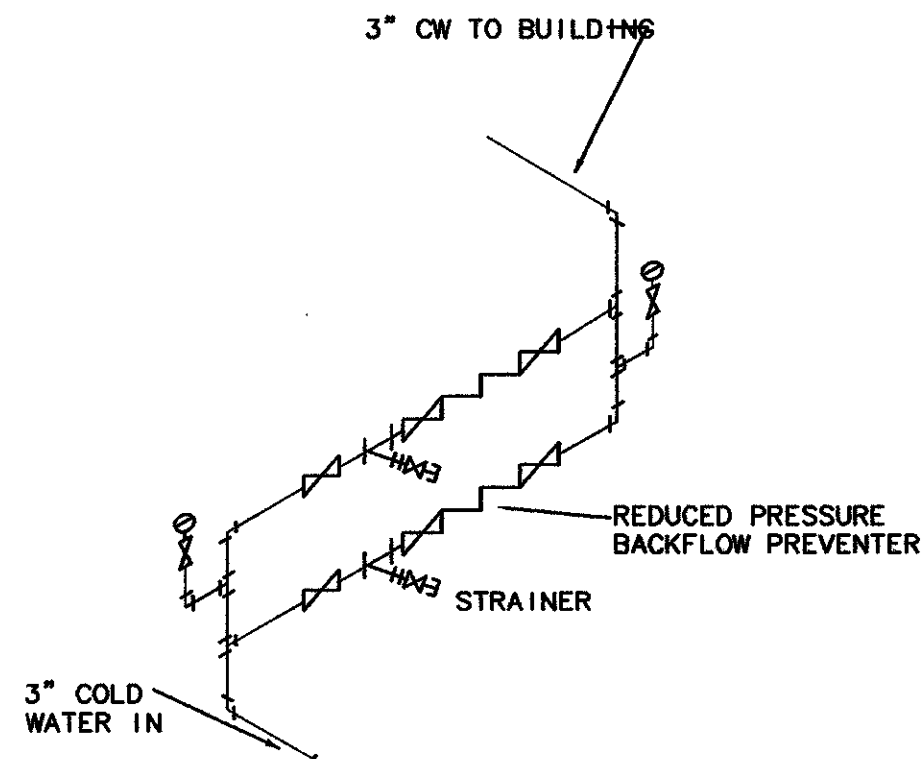


GENERAL PLUMBING NOTES

1. DRAWINGS ARE DIAGRAMMATIC AND SHOW GENERAL PLUMBING LAYOUTS AND PIPE ROUTING FOR BIDDING PURPOSES. IT IS THE RESPONSIBILITY OF THE CONTRACTOR TO PREPARE DETAILED SHOP DRAWINGS AND CONFIRM SPACE ALLOCATIONS.
2. SEE ARCHITECTURAL AND STRUCTURAL DRAWINGS FOR ALL BUILDING DIMENSIONS, DETAILS, ELEVATIONS AND LOCATIONS OF FIXTURES.
3. PRIOR TO INSTALLATION OF BUILDING DRAIN, PLUMBING CONTRACTOR SHALL VERIFY THE DEPTH OF EXISTING SANITARY SEWER TAP (OR MAIN) AND ENSURE THAT NEW SANITARY SEWER WILL SLOPE AS REQUIRED FROM THE BUILDING DRAIN TO THE EXISTING SEWER TAP (OR MAIN).
4. PLUMBING CONTRACTOR SHALL REVIEW ARCHITECTURAL, STRUCTURAL, ELECTRICAL, SPRINKLER AND MECHANICAL PLANS AND COORDINATE HIS WORK WITH ALL OTHER TRADES. NOTIFY ARCHITECT OF ANY CONFLICTS.
5. PLUMBING CONTRACTOR SHALL COORDINATE WITH ELECTRICAL CONTRACTOR ALL VOLTAGES, LOADS, ETC. OF ELECTRICALLY OPERATED EQUIPMENT PRIOR TO ORDERING. ALL EQUIPMENT SHALL BE U.L. LISTED AND NEMA RATED FOR THE APPLICATION IN WHICH IT IS INSTALLED.
6. PLUMBING CONTRACTOR SHALL FURNISH ALL ACCESS PANELS (TO BE INSTALLED BY GENERAL CONTRACTOR) REQUIRED FOR PLUMBING INSTALLATIONS.
7. FURNISH THE OWNER ONE SET OF REPRODUCIBLE "AS-BUILT" DRAWINGS, AND TWO SETS OF OPERATION AND MAINTENANCE MANUALS. INSTRUCT OWNER OR HIS AGENT IN THE PROPER OPERATION AND MAINTENANCE OF THE PLUMBING EQUIPMENT.
8. PLUMBING CONTRACTOR SHALL INCLUDE IN HIS BID ALL APPLICABLE SERVICE CHARGES, FEES, PERMITS, TAXES, AND OTHER COSTS IN CONNECTION WITH INSTALLING THE PLUMBING SYSTEM.
9. ALL WORK SHALL CONFORM TO STANDARDS OF GOOD WORKMANSHIP AND SHALL COMPLY WITH ALL APPLICABLE CODES AND AUTHORITIES HAVING JURISDICTION. IN ADDITION, THE FOLLOWING SPECIFICATIONS WILL SUPERSEDE THE CODE:
10. ALL DRAINS, WASTES, AND VENTS (DWV) SHALL BE SCHEDULE 40 PVC BELOW GRADE, SCH 40 PVC ABOVE GRADE. IN THE MAKING OF JOINTS, PIPE ENDS SHALL BE CUT SQUARE, DEBURRED, AND THE OUTER EDGES BEVELLED ACCORDING TO MANUFACTURER'S RECOMMENDATIONS.
11. WATER PIPING BELOW SLAB SHALL BE TYPE "K" SOFT COPPER TUBING. COVER WITH A MINIMUM OF 6" OF SAND OR BACKFILL FREE OF ROCKS, FOREIGN MATERIAL, AND CLOSURES. JOINTS, IF REQUIRED, SHALL BE MADE WITH APPROVED WROUGHT COPPER FITTINGS AND BRAZED WITH A FILLER MATERIAL CONFORMING TO AWS A5.8. (PREFERABLY 15% SILVER SOLDER)
12. WATER PIPING ABOVE GRADE SHALL BE TYPE "L" HARD COPPER TUBING. JOINTS SHALL BE MADE WITH APPROVED FITTINGS AND LEAD-FREE SOLDER (ASTM B32) AND FLUX (ASTM B 813). PIPE ENDS SHALL BE CUT SQUARE, DEBURRED, AND REAMED TO THE FULL INSIDE DIAMETER.
13. ALL HOT WATER MAINS AND RECIRCULATING LINES SHALL BE INSULATED WITH 1" THICK FIBERGLASS INSULATION, COLD WATER WITH 1/2" THICK INSULATION.
14. WATER PIPING AND DRAINAGE TRAPS IN EXTERIOR WALLS (OR CEILINGS) SHALL BE LOCATED WITHIN THE HEATED ENVELOPE OF THE BUILDING BETWEEN THE FINISHED INTERIOR WALL AND THE WALL INSULATION. INSULATE WATER PIPING IN EXTERIOR WALLS WITH 1" THICK FIBERGLASS INSULATION.
15. INSULATE ALL CONDENSATE TRAPS AND DRAINS (LOCATED IN AREAS WHERE CONDENSATION ON THE EXTERIOR OF PIPING COULD CAUSE DAMAGE TO BUILDING COMPONENTS) WITH 1/2" THICK FIBERGLASS INSULATION WITH VAPOR RETARDER.
16. ALL PIPING INSULATION SHALL BE INSTALLED BY A PROFESSIONAL INSULATION CONTRACTOR.
17. DO NOT RUN ANY WATER PIPING ABOVE ELECTRICAL PANELS (COORDINATE WITH ELECTRICAL CONTRACTOR).
18. SLEEVES SHALL BE INSTALLED WHERE PIPING PASSES THROUGH STRUCTURE.
19. ALL PENETRATIONS OF FIRE-RATED PARTITIONS SHALL BE FIREPROOFED BY A U.L. LISTED FIRE STOPPING SYSTEM INSTALLED IN STRICT ACCORDANCE WITH THE MANUFACTURER'S INSTRUCTIONS.
20. ALL VTR'S SHALL BE LOCATED A MINIMUM OF 10 FT FROM FRESH AIR INTAKES WHETHER OR NOT SHOWN ON PLANS. OFFSET ALL VTR'S AS REQUIRED.
21. COORDINATE FLASHINGS FOR VTR'S WITH ROOFING CONTRACTOR.
22. ALL PIPING AND VALVES SHALL BE LABELED.
23. ALL VALVES FOR HOT WATER RETURN SHALL HAVE MEMORY STOPS.

TRENCHING AND BACKFILLING:

1. TRENCHES SHALL HAVE 12" MINIMUM AND 24" MAXIMUM CLEARANCE ON ALL SIDES.
2. UNIFORM SLOPE SO THAT THE PIPING IS UNIFORMLY SUPPORTED THROUGHOUT ITS ENTIRE LENGTH OF UNDISTURBED SOIL. WHEN NECESSARY, TRENCHES SHALL BE UNDERCUT TO A DEPTH REQUIRED TO REACH STABLE SOIL AND FILLED TO THE FLOW LINE DEPTH WITH COMPACTED SAND.
3. MATERIAL AND CLOSURE BACKFILL AND TAMP IN 4" LAYERS TO A HEIGHT AT LEAST 2" ABOVE PIPE. THE REMAINDER OF BACKFILL SHALL BE BROUGHT TO GRADE AND COMPACTED TO DENSITY OF SURROUNDING SOIL.

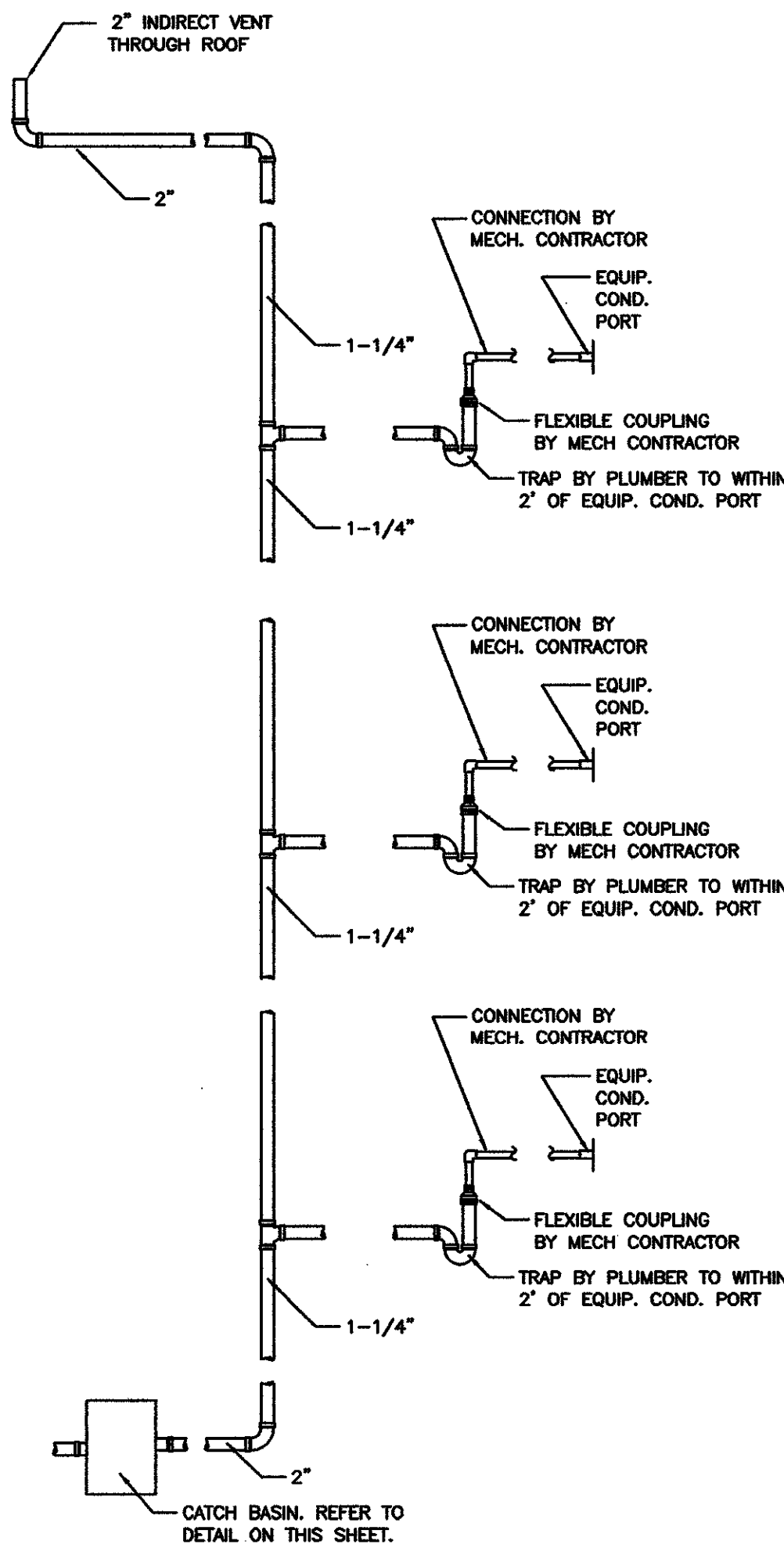


REDUCED PRESSURE BACKFLOW PREVENTER
NO SCALE

DRAIN, CLEANOUT, AND HYDRANT SCHEDULE		
TAG	FIXTURE	DESCRIPTION
NFWH	NON-FREEZE WALL HYDRANT	WOODFORD #667 WALL HYDRANT WITH BOX - 12" LENGTH
FCD	FLOOR CLEANOUT	JONESPEC CO-2450-PV4
GCD	GRADE CLEANOUT	JONESPEC CO-2455-PV TO BE INSTALLED IN CONCRETE PAD 2'X2'X4"
WCD	WALL CLEANOUT	JONESPEC CO-2530-SS5
FD	FLOOR DRAIN	ZURN FD2280-PV3 PVC FLOOR DRAIN

TOP, PROVIDE 12" DEEP "DEEP SEAL" TRAPS ON ALL FLOOR DRAINS

PLUMBING LEGEND	
— SAN —	SANITARY DRAIN, WASTE, VENT
— IW —	INDIRECT WASTE
— CD —	CONDENSATE
— SD —	STORM DRAIN
— C —	COLD WATER
— H —	HOT WATER
— HW —	HOT WATER RETURN
— COTG —	BACKFLOW PREVENTER
— FCD —	CLEANOUT TO GRADE
— VTR —	FLOOR CLEANOUT
— RPB —	VENT THROUGH ROOF
— HB —	BACKFLOW PREVENTER
— FD —	HUB DRAIN
— X —	FLOOR DRAIN
	INDICATES RISER NUMBER



CONDENSATE DRAIN
SCALE: NONE

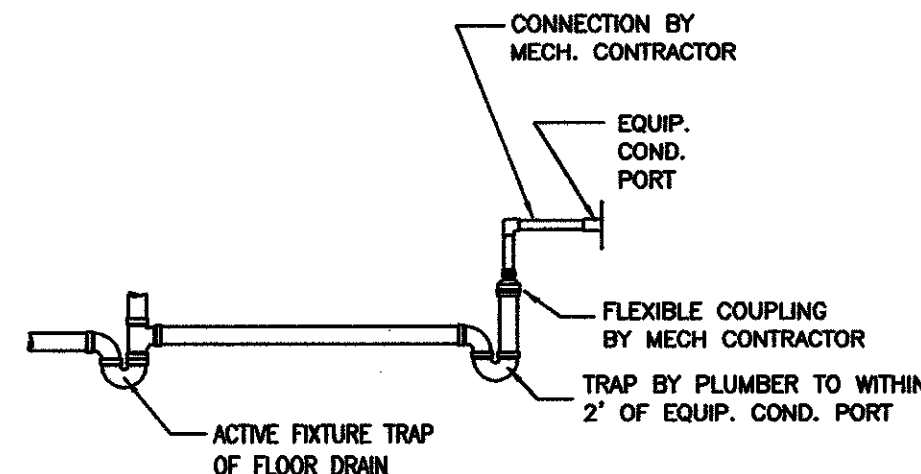
PLUMBING FIXTURE SCHEDULE

SEE ARCHITECTURAL PLANS FOR EXACT HEIGHT AND LOCATION OF ALL FIXTURES

SYMBOL	FIXTURE	MANUF.	BRASS	TRAP	SUPPLY	DESCRIPTION
WC-1	WATER CLOSET	ELJER	—	—	3/8"x1/2" ANGLE S. W/STOPS	#001-0225-00 ELONGATED, TANK TYPE (WHITE) WATER CLOSET, 1.6 GPF WITH CHURCH #135T-000, WHITE, OPEN FRONT SEAT WITH LID AND STAINLESS STEEL CHECK HINGES AND ZURN Z-8804-OR CLOSET SUPPLY KIT
WC-2	HANDICAP WATER CLOSET	ELJER	—	—	3/8"x1/2" ANGLE S. W/STOPS	#001-2178-00 ELONGATED HANDICAPPED, TANK TYPE (WHITE) WATER CLOSET, 1.6 GPF WITH CHURCH #135T-000, WHITE, OPEN FRONT SEAT WITH LID AND STAINLESS STEEL CHECK HINGES AND ZURN Z-8804-OR CLOSET SUPPLY KIT
L-1	LAVATORY	INTERGAL BOWL	DELTA	1 1/4" TUBULAR PVC	3/8"x1/2" ANGLE S. W/STOPS	INTERGAL BOWL, DELTA #520-TPM SINGLE LEVER FAUCET, DEARBORN BRASS #P9704 PVC PTRAP AND ZURN #Z-8804-LR LAVATORY SUPPLY KITS
L-2	LAVATORY HANDICAPPED	INTERGAL BOWL	DELTA	1 1/4" TUBULAR PVC	3/8"x1/2" ANGLE S. W/STOPS	INTERGAL BOWL, DELTA #520-TPM SINGLE LEVER FAUCET, DEARBORN BRASS #P9704 PVC PTRAP AND ZURN #Z-8804-LR LAVATORY SUPPLY KITS, PLUMBEREX #X4333 WHITE 3 PIECE FORM FITTING INSULATION COVER KIT
L-3	LAVATORY HANDICAPPED	ELJER	DELTA	1 1/4" 17 GAUGE C.P.B.	3/8"x1/2" ANGLE S. W/STOPS	#051-2104-00, WHITE, 20"x18" VITROUS CHINA LAVATORY, DELTA #501-WF SINGLE LEVER FAUCET, MATCO-NORCA FY156 GRID DRAIN, DEARBORN BRASS #P9704 PVC PTRAP AND ZURN #Z-8804-LR LAVATORY SUPPLY KITS, PLUMBEREX #X4333 WHITE 3 PIECE FORM FITTING INSULATION COVER KIT ZURN 1231 CONCEALED ASH CARRIER, MOUNTED AT HANDICAPPED HEIGHT
TB-1	BATH TUB	BOOTZ	DELTA	1 1/2" OR 2"	1/2" W/STOPS	BOOTZ TUB # 011-2364-00 RIGHT OR LEFT HAND WHITE STEEL TUB, #10700UNMS VALVE BODY, DELTA #113480 MONITOR TRM RED, BLUE AND TELEDYNE WATERPIK #SM621H SHOWER HEAD, OATEY #P9226 TUB WASTE WITH LEVER HANDLE
TB-2	ACCESSIBLE BATH TUB	BOOTZ	DELTA	1 1/2" OR 2"	1/2" W/STOPS	BOOTZ TUB # 011-2364-00 RIGHT OR LEFT HAND WHITE STEEL TUB, #10700UNMS VALVE BODY, DELTA #113480 MONITOR TRM RED, BLUE, HAND HELD SHOWER AND TELEDYNE WATERPIK #SM621H SHOWER HEAD, OATEY #P9226 TUB WASTE WITH LEVER HANDLE
SH-1	SHOWER UNIT	STERLING	WATERPIC	1 1/2" OR 2"	1/2" W/STOPS	STERLING #72131100 SHOWER, WATERPIK #SM621 SHOWER HEAD, JONES STEPHENS #040-140 BRASS DRAIN W/ BRASS STRAINER, SHOWER HEAD PROVIDE 17 GA. WASTE
S-1	HAND WASHING SINK	ELJER	DELTA	1 1/2" 17 GAUGE C.P.B.	3/8"x1/2" ANGLE S. W/STOPS	#051-2104-00 20"x18" WALL HUNG WHITE LAVATORY WITH DELTA #2170 FAUCET, MATCO-NORCA FY156 GRID DRAIN, DEARBORN BRASS #P9704 PVC PTRAP AND ZURN #Z-8804-LR LAVATORY SUPPLY KITS, ZURN #Z-1231 CONCEALED ASH FLOOR MOUNTED FIXTURE CARRIER
S-2	2 COMP. SINK	ELKAY	DELTA	1 1/2" 17 GAUGE C.P.B.	3/8"x1/2" ANGLE S. W/STOPS	# DSC233224 33"x22" STAINLESS STEEL 2 COMP SINK, SOUND DAMPENING UNDERCOAT, DELTA #400-TP SINGLE HANDLE FAUCET WITH SPRAY, WATTS #14 STAINLESS STEEL BASKET STRAINER, DEARBORN BRASS #P9704 PVC TUBULAT TRAP AND ZURN #Z-8804-LR LAVATORY SUPPLY KITS
S-3	PANTRY SINK	METCRAFT	DELTA	1 1/2" 17 GAUGE C.P.B.	3/8"x1/2" ANGLE S. W/STOPS	#T2243-4, 3 COMPARTMENT SINK, DELTA 300-TP SINGLE HANDLE FAUCET WITH SPRAY, WATTS #14 STAINLESS STEEL BASKET STRAINERS, DEARBORN BRASS #P9704 PVC TUBULAT TRAP AND ZURN #Z-8804-LR LAVATORY SUPPLY KITS
S-4	BAR SINK	ELKAY	DELTA	1 1/2" 17 GAUGE C.P.B.	3/8"x1/2" ANGLE S. W/STOPS	# K115152 STAINLESS STEEL BAR SINK, SOUND DAMPENING UNDERCOAT, DELTA #2170 BAR FAUCET WITH SPRAY, JONES STEPHENS B02-050 2 1/2" DUO STAINLESS STEEL BASKET STRAINER, DEARBORN BRASS #P9704 PVC TUBULAT TRAP AND ZURN #Z-8804-LR LAVATORY SUPPLY KITS
EDF-1	DRINKING FOUNTAIN	ELKAY	—	1 1/4" 17 GAUGE C.P.B.	3/8"x1/2" ANGLE S. W/STOPS	#E258 WALL MOUNTED ELECTRIC DRINKING FOUNTAIN, DEARBORN BRASS #P9704 PVC TUBULAT TRAP AND BRASSCRAFT #0CR19C SUPPLY KIT
EDF-2	DRINKING FOUNTAIN	HALSEY TAYLOR	—	1 1/4" 17 GAUGE C.P.B.	3/8"x1/2" ANGLE S. W/STOPS	#E258 WALL MOUNTED ELECTRIC DRINKING FOUNTAIN, DEARBORN BRASS #P9704 PVC TUBULAT TRAP AND BRASSCRAFT #0CR19C SUPPLY KIT, INSTALL PER HANDICAPPED REQUIREMENTS
WM-1	WASHING MACHINE	—	—	—	—	COMMERCIAL WASHER/EXTRACTOR FURNISHED BY OWNER, INSTALLED BY PLUMBING CONTR. PER VENDOR RECOMMENDATIONS.
WM-2	WASHING MACHINE	GUY GRAY	—	—	—	#8200 WASHING MACHINE BOX WITH VALVES
IM	ICE MACHINE	GUY GRAY	—	—	—	#B1M875 ICE MAKER VALVE BOX
MB-1	MOP BASIN	CHICAGO	—	—	—	#887-RCF MOP SINK FAUCET, HOSE AND BRACKET, MOP HANGER AND ZURN WC2424 WALL GUARD. INSTALL FLOOR DRAIN AND WALL MTD. FAUCET ASSEMBLY

NOTES

1. FURNISH ESCUTCHEONS OR FLANGES (TO BE CHROME-PLATED BRASS OR STAINLESS STEEL) ON ALL WALL PENETRATIONS.
2. FURNISH ALL FIXTURES WITH REQUIRED SUPPLIES, STOPS, AND TRAPS. EXPOSED SUPPLIES, STOPS, & TRAPS SHALL BE CHROME-PLATED.
3. PROVIDE TRUEBRO LAV-GUARD OR LAV-SHIELD INSULATION KIT FOR ALL HANDICAPPED LAVATORIES WITH EXPOSED SUPPLIES AND DRAINS.
4. INSTALL ALL FIXTURES IN STRICT ACCORDANCE WITH MANUFACTURER'S INSTRUCTIONS AND PLUMBING CODE.
5. SUPPORT FIXTURE SUPPLIES WITH EARED ELLS, HOLD-RITE BRACKETS, OR EQUIVALENT.
6. ALL FIXTURES MUST MEET WITH THE APPROVAL OF HAMPTON/HILTON HOTEL INC. STANDARDS.

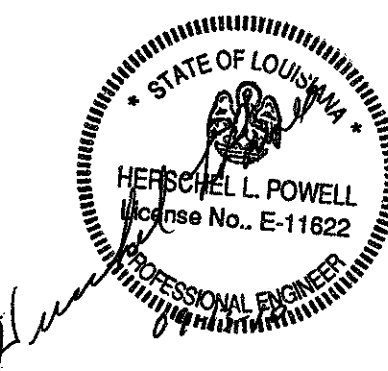


CONDENSATE DRAIN AT FLOOR DRAIN
SCALE: NONE



Richard Molenaar

ARCHITECT



PROJECT NAME:

Hampton Inn
Main Street
West Monroe, Louisiana

SHEET TITLE:
PLUMBING SCHEDULES & DETAILS

PROJECT NO.

LATEST REVISION:

PROJ#

DRAWN BY:

CHECKED BY:

SHEET NUMBER:

RHP

HLP

DATE:

09-13-10

P105