

THESE DRAWINGS, DESIGNS, SKETCHES, IDEAS & ARRANGEMENTS ARE THE SOLE & EXCLUSIVE PROPERTY OF LEE GAGE & ASSOCIATES, AND WERE CREATED BY AND FOR THE ARCHITECTS' EXCLUSIVE USE ON AND IN CONJUNCTION WITH THE ARCHITECTS' WORK. NOTHING CONTAINED OR REPRESENTED ON ANY DOCUMENT SHALL BE USED BY OR DISCLOSED TO ANY PERSON, FIRM OR CORPORATION FOR ANY PURPOSE, WITHOUT EXPRESSED WRITTEN CONSENT OF LEE GAGE & ASSOCIATES.

PROPOSED:
HAMPTON INN
CORPORATE DRIVE
SOUTH SAN FRANCISCO, CA.

by _____ date _____

drawn _____

checked _____

revised _____

revised _____

project no. _____

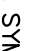

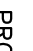
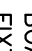
sheet _____

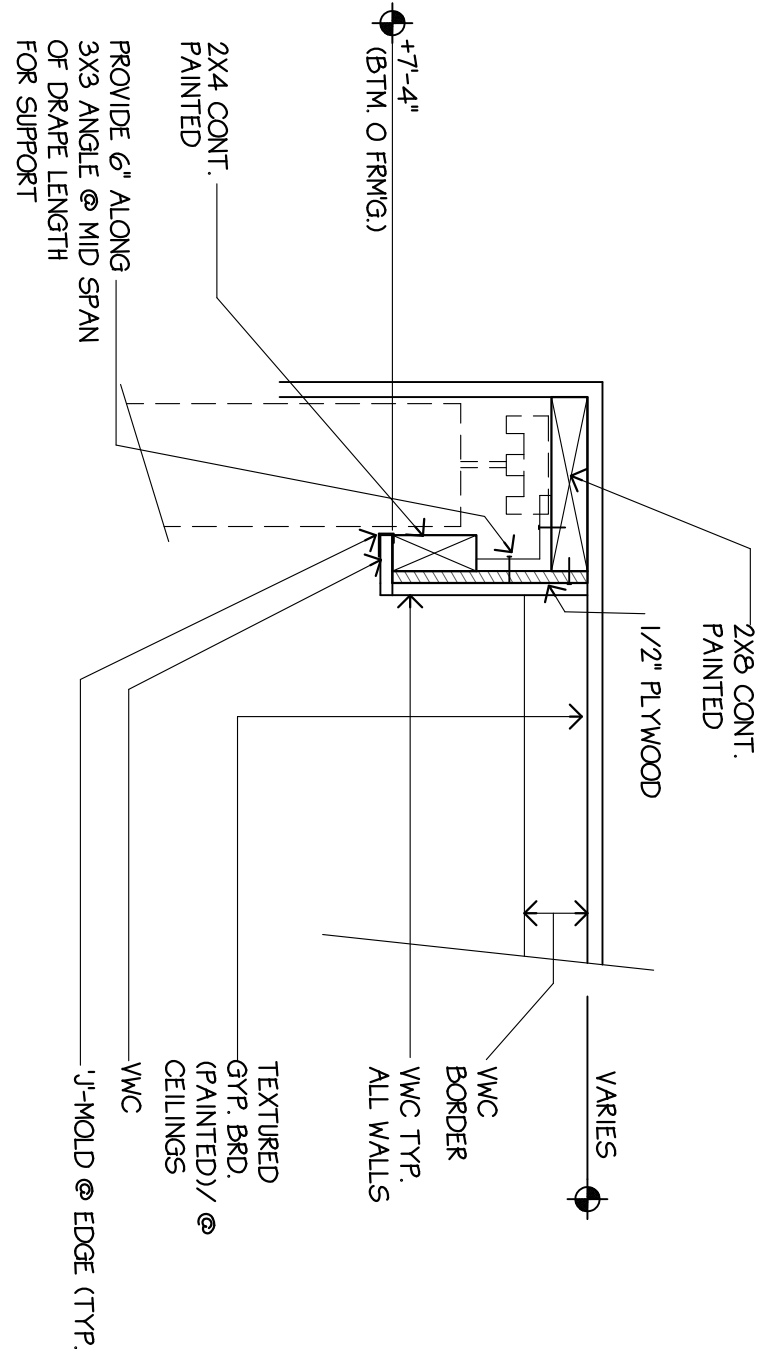
A16

ACCESSORIES SCHEDULE

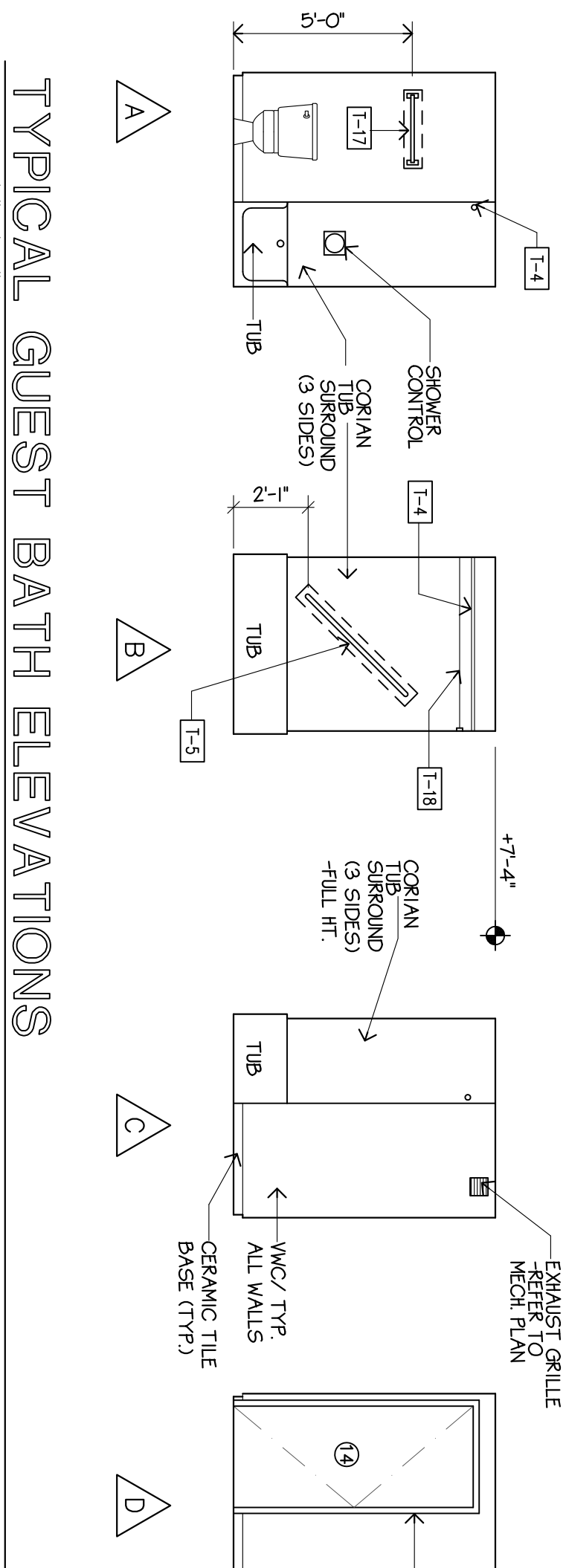
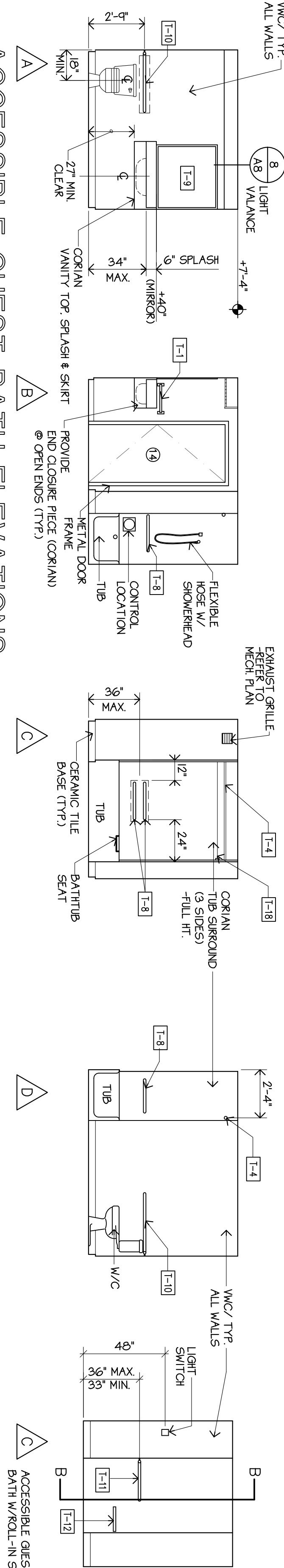
NO.	DESCRIPTION	FRANKLIN BRASS	BOBRICK
I-1	TOWEL BAR 18"	1418 (SCREEN-IN TYPE)	
I-2	FAUCET TISSUE HOLDER (RECESSED/ APRON MTD.)	919	
I-3	TOILET TISSUE HOLDER (RECESSED/ 2-ROLL)	970	
I-4	SHOWER CURTAIN ROD 60.5 (SS)	S.S. ROD W/ SCREEN-IN FASTENING 160.5 (SS)	
I-5	GRAB BAR - 48" (FIELD MEASURE) 1/2" PLATE GLASS MIRROR MOUNT ON DOOR W/6 CLIPS	5624	
I-6	GRAB BAR - 36" (NOT USED)	5624	
I-7	MIRROR (36" x 36")	1/2" PLATE GLASS MIRROR W/ STAINLESS STL MOUNTING CHANNELS	
I-8	GRAB BAR (ONE-PIECE)	5662	
I-9	GRAB BAR (ONE-PIECE)	5662	
I-10	SHOWER SEAT (FOLD DOWN)	BROULEY	
I-11	PAPER TOWEL DISP. & DISPOSAL (RECESSED)	B-38024	
I-12	SANITARY MOPIN DISPENSER	B-3500	
I-13	NOT USED		
I-14	DOUBLE ROBE HOOK (BEHIND BATH DOOR)	1402	
I-15	TOWEL SHELF W/ BAR 24"	2700PC	
I-16	RETRACTABLE CLOTHES LINE	910	
I-17	GARMENT BAG HOOK	TEST 1100 SERIES (TUBULAR END & SAILS)	

GENERAL NOTES

- SYMBOL  INDICATES DOOR TYPE. REFER TO SHEET A9 FOR DOOR SCHEDULE INFORMATION.
- SYMBOL  INDICATES WINDOW TYPE. REFER TO SHEET A9 FOR WINDOW SCHEDULE INFORMATION.
- PROVIDE WOOD BLOCKING OR OTHER SOLID MATERIAL BEHIND GLASS DOOR BOTTOMS FOR PROTECTION OF ALL FIXTURES, FITTINGS, AND ACCESSORIES.
- GRAB BARS MUST BE ABLE TO RESIST A PULL FORCE OF 350 LBS. EXERTED AT ANY POINT IN ANY DIRECTION.
- SYMBOL  INDICATES TOILET ACCESSORIES. SEE THIS SHEET FOR ACCESSORIES SCHEDULE.
- MIRROR ABOVE VANITY AND ACCESSIBLE SINKS IS TO BE SUPPORTED WITH A CONTINUOUS CHROME TUBULAR W/ 3-CHANNEL FASTENED TO WALL ABOVE BACKSPLASH.
- CLOTHES ROD ASSEMBLY TO HAVE SMALL DIAMETER HOOKS IN LED OR PUZZLE TYPE HANGERS.
- VANITY TOP TO HAVE GLOSS FINISH TO MATCH TUB SUBROUT.
- ALL ELEC. OUTLETS ARE TO BE PREFINISHED STD. IVORY COLOR.
- PROVIDE 3  (CONJURE ROBE HOOK) IN EXPOSED ROOM ON WALL OPPOSITE MIRRORS -LOCATE PER OWNER'S DIRECTION
- PROVIDE 2 SOAP DISHES AT EACH TUB/ SHOWER (RECESSED)

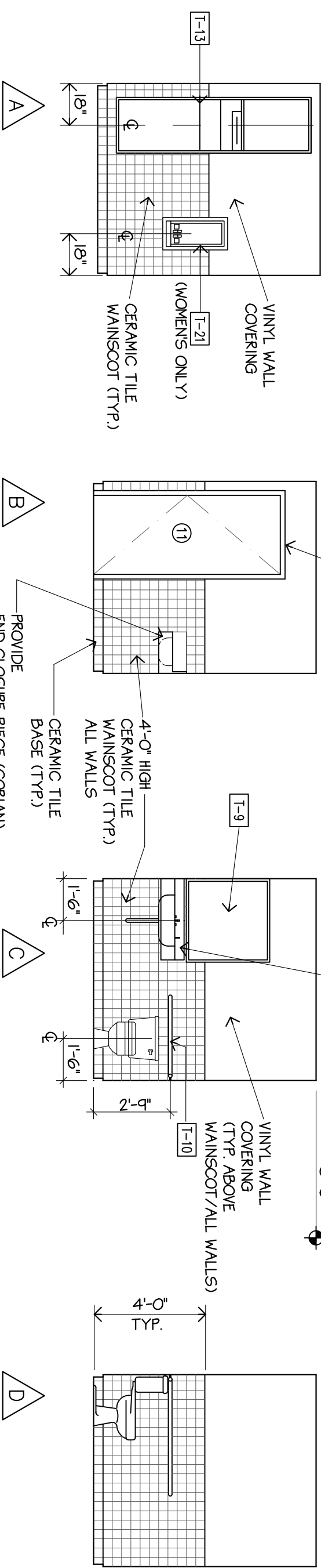


1 DRAPE VALANCE DETAIL
SCALE: 1 1/2"=1'-0"



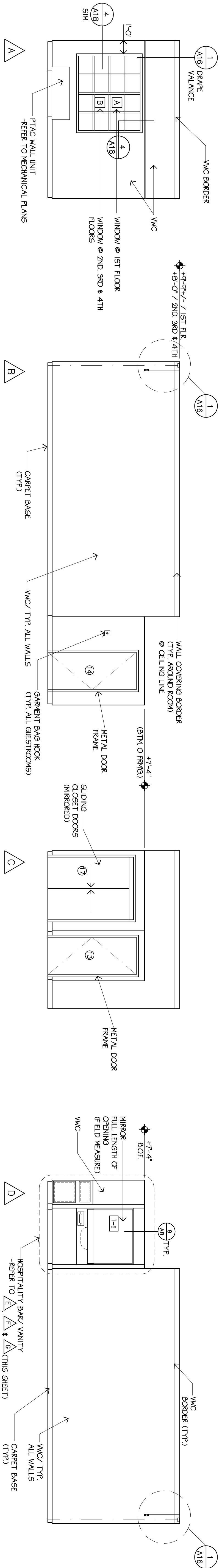
ACCESSIBLE GUEST BATH ELEVATIONS

(ROOM WITH TUB)



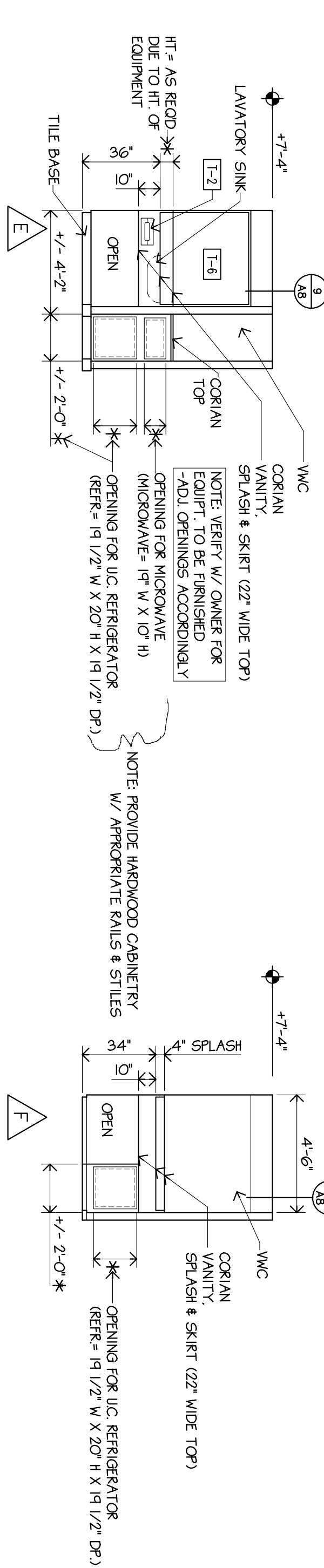
PUBLIC RESTROOM ELEVATIONS

(WOMEN'S 122 SHOWN/ MEN'S 121 SIM.)



TYPICAL GUESTROOM ELEVATIONS

SCALE: 1/4"=1'-0"

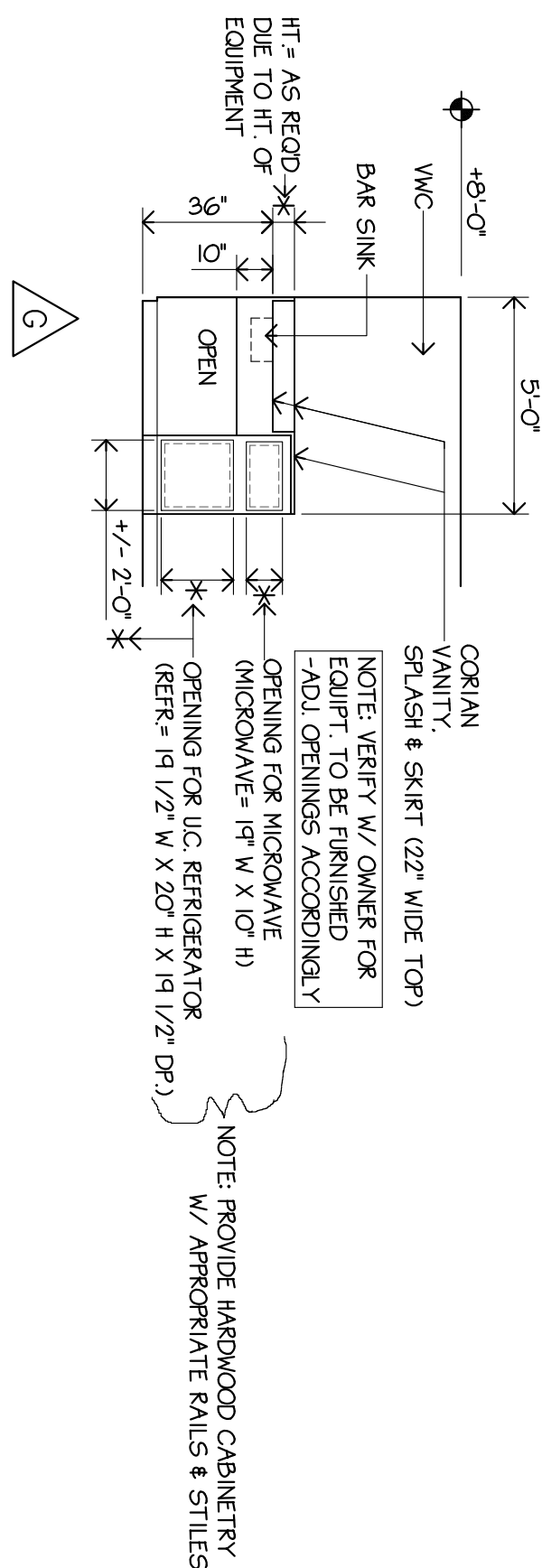


VANITY/ HOSPITALITY BAR ELEVATION

(NON H/C GUESTROOMS)

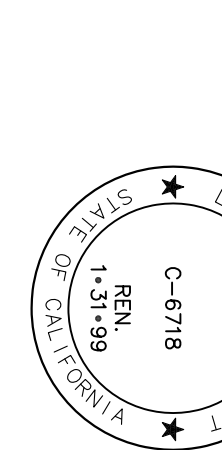
HOSPITALITY BAR ELEVATION

(H/C ACCESSIBLE GUESTROOMS) HD12 ROOM SIM.



HOSPITALITY BAR ELEVATION

(PS ROOM)



C:\SDSKPROJ\ \SOUTH\SF0\DWG\SF0-A16.DWG

LEE GAGE C-6718