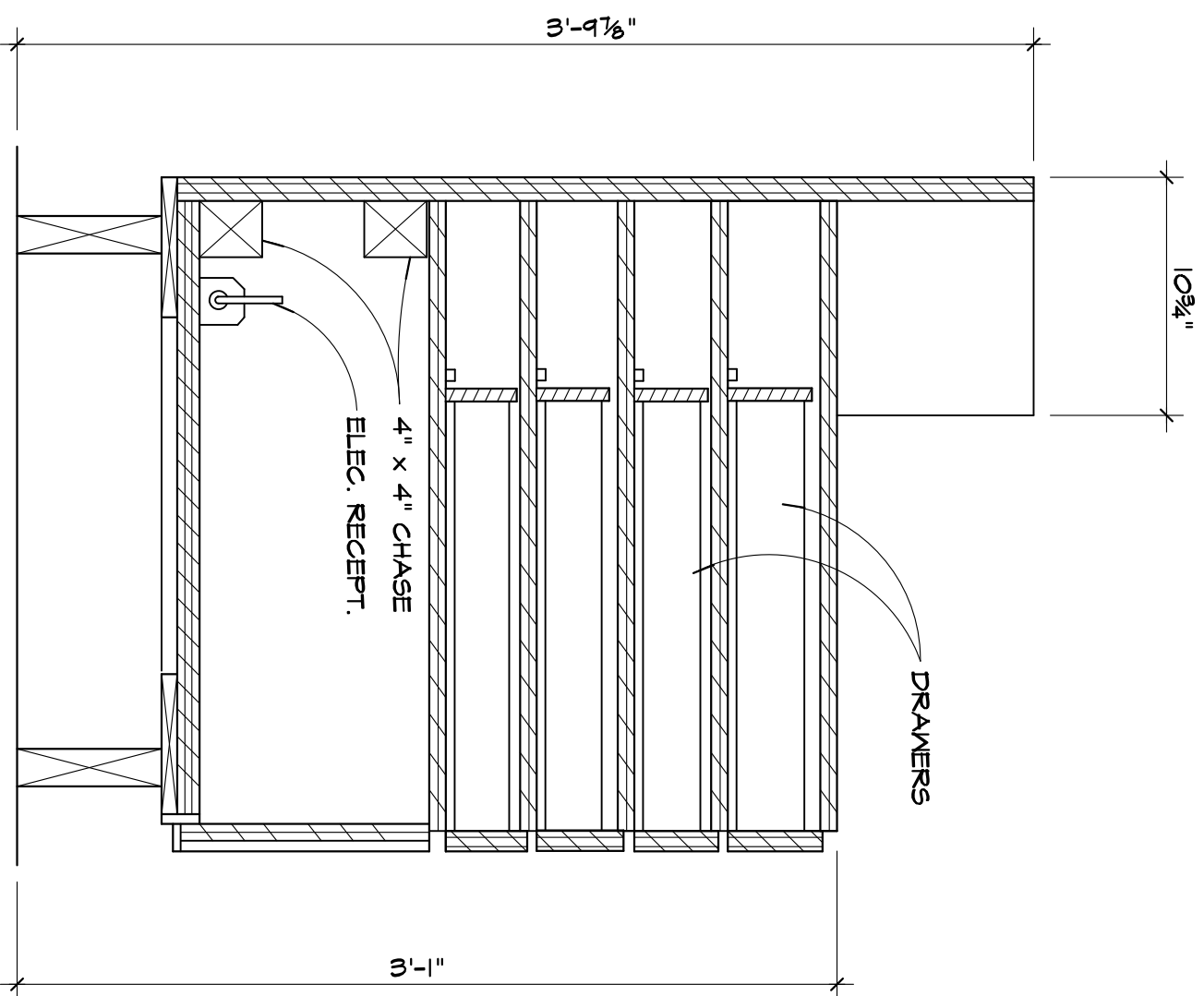
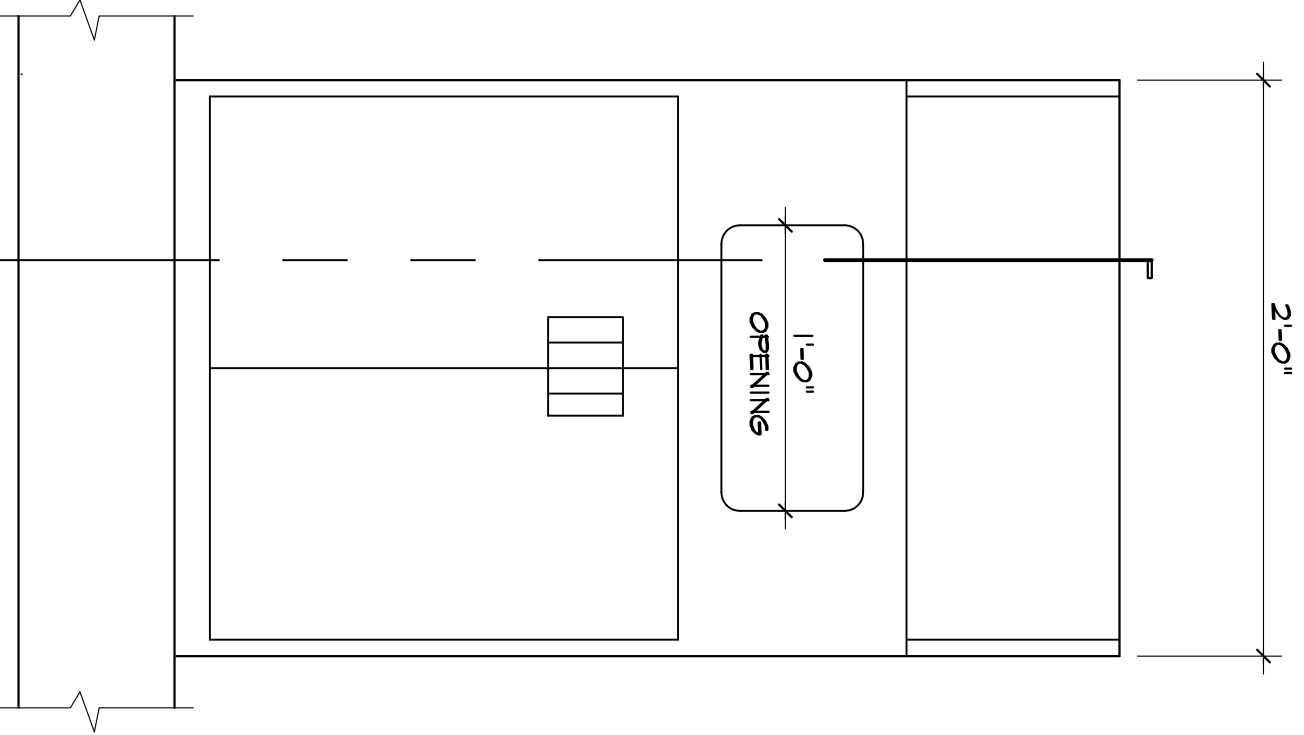


3 CORNER FILLER MODULE
1 1/2" = 1'-0"

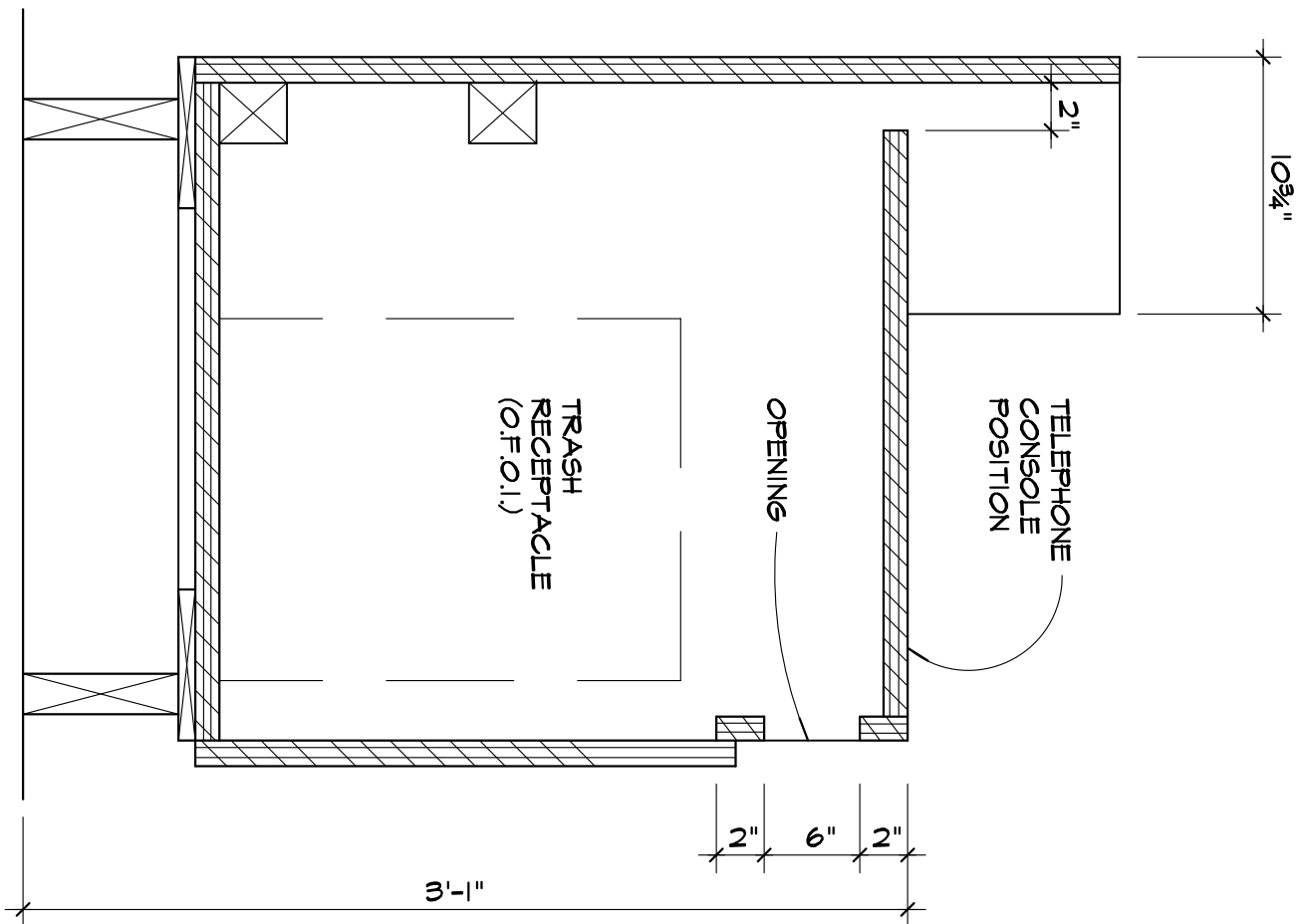


3A SECTION
1 1/2" = 1'-0"

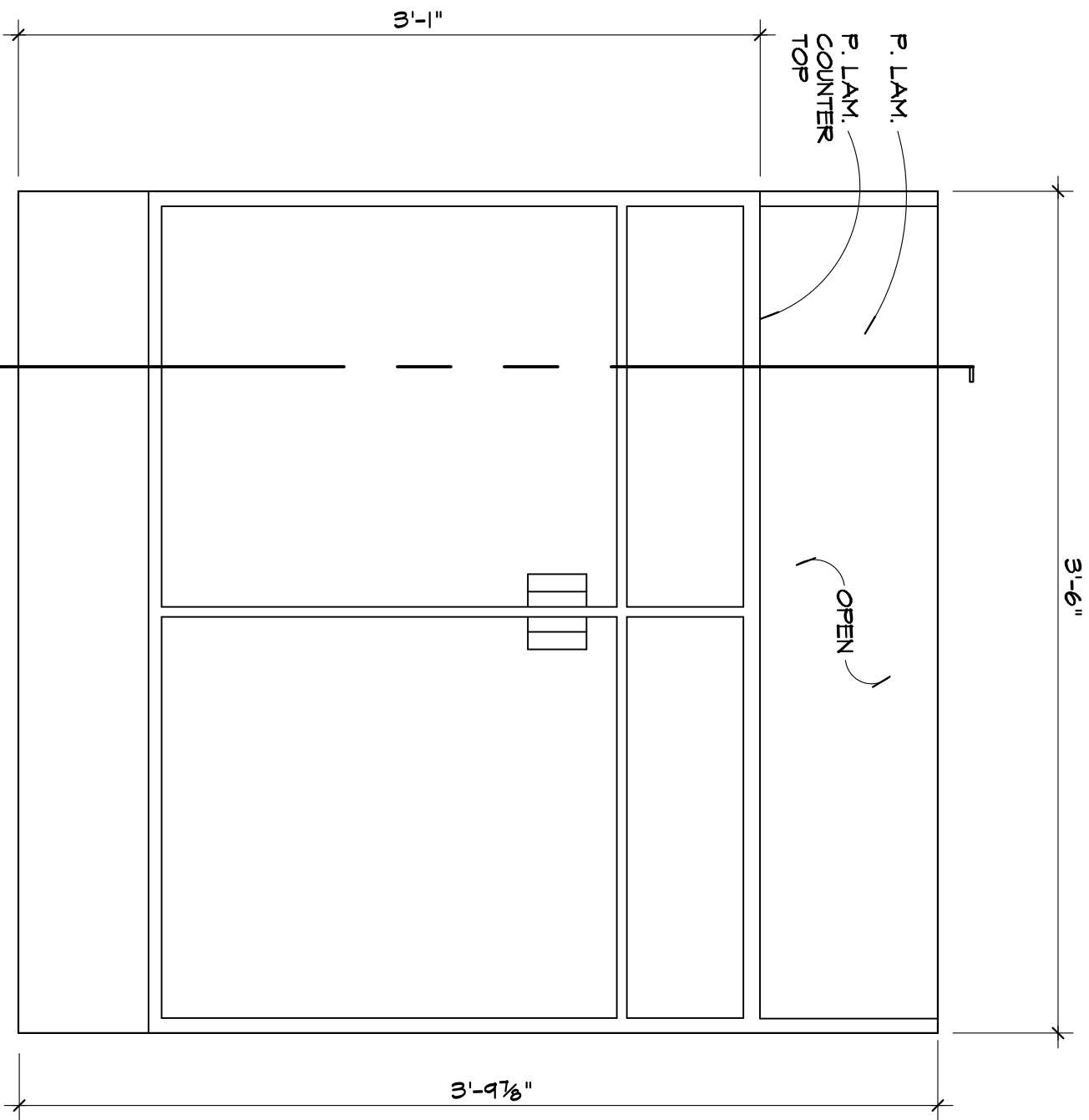


4 TELE. CONSOLE ELEV.
1 1/2" = 1'-0"

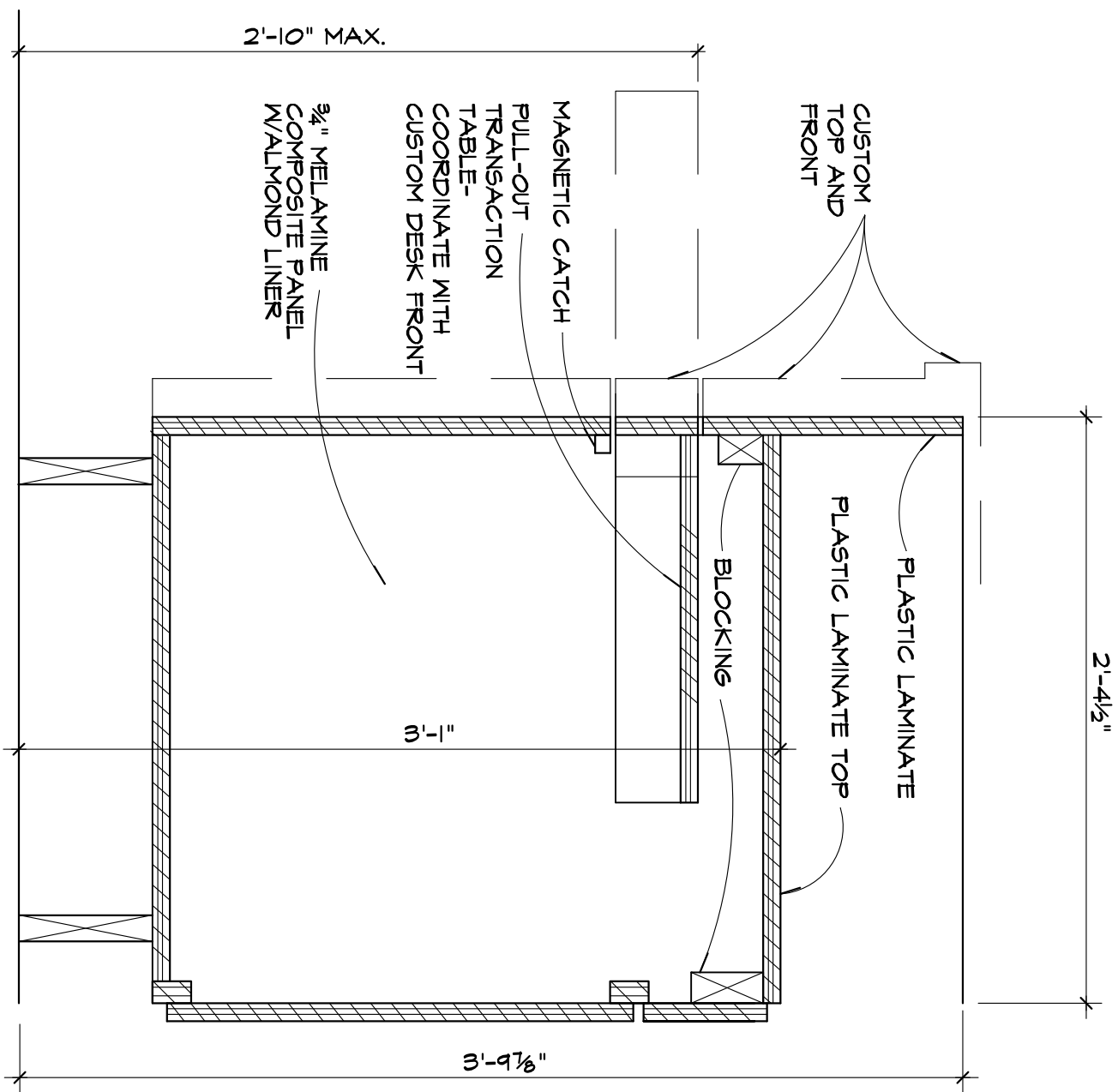
- NOTES:**
1. ASSEMBLE BASE ON FLOOR IN PERMANENT LOCATION. SHIM AS NECESSARY TO ASSURE LEVELING.
 2. PLACE INDIVIDUAL MODULES ON BASE IN PROPER SEQUENCE AND LOCATIONS WITH HOLES PROVIDED. MODULES SHALL OVERHANG BASE 2" FRONT AND BACK.
 3. FASTEN CUSTOM FRONT BY MATCHING BEVELLED MOUNTING CLIPS AT BOTTOM AND FASTENING THRU 8" SPACER FROM BEHIND.
 4. INSTALL CUSTOM TOP.
 5. ASSEMBLE MODULES IN SEQUENCE PER DESIGN PLANS.
 6. ASSEMBLE ALL MODULES AND ANY EDGE CONDITION TO INSURE A FLUSH, TIGHT FIT.
 7. INSTALL PLEXGLASS, CASH DRAWER, AND INSERTS AS PER MODULE DETAILS.
 8. CUSTOM TOP AND FRONT SHALL BE COORDINATED WITH OWNER.



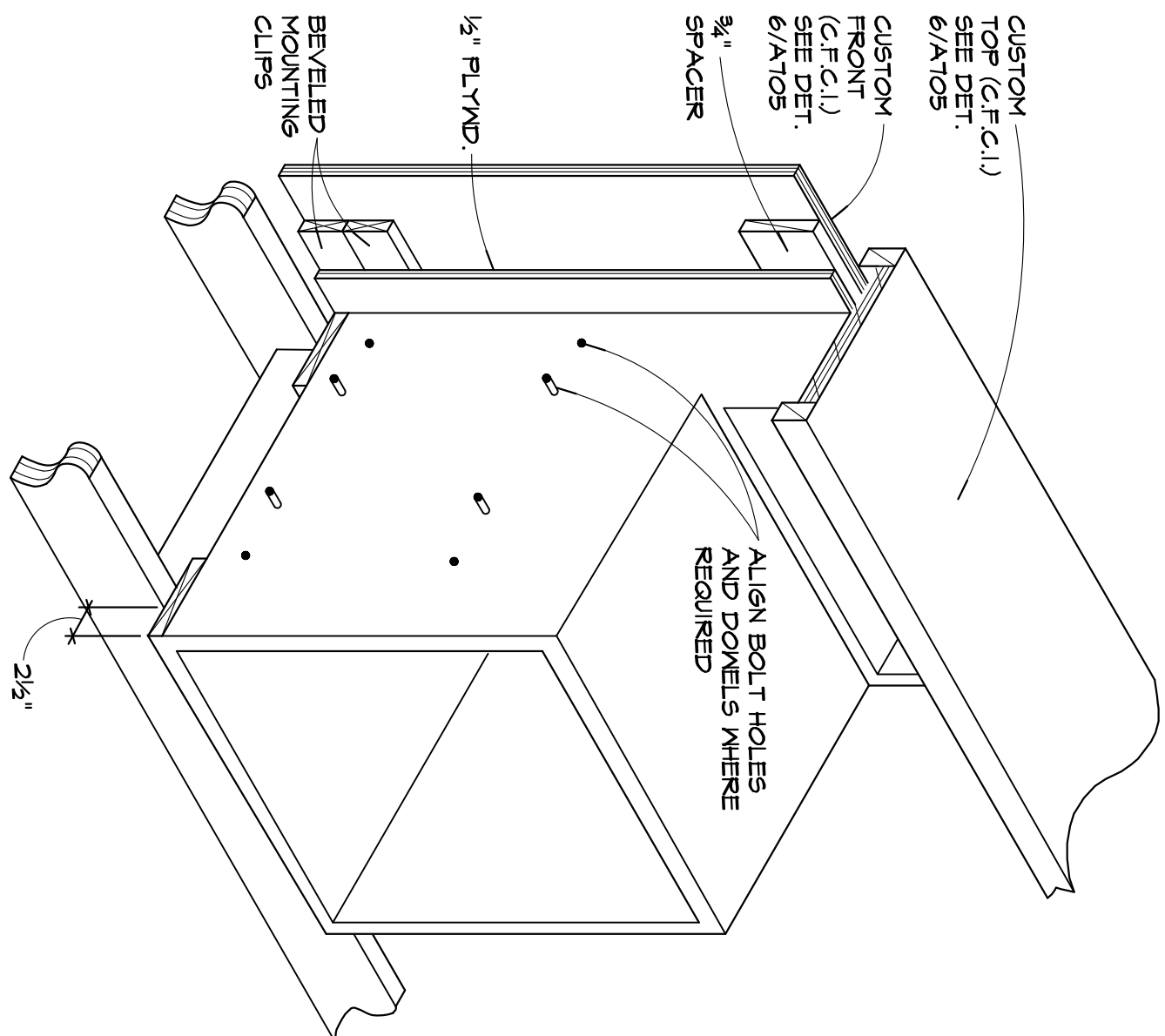
4A SECTION
1 1/2" = 1'-0"



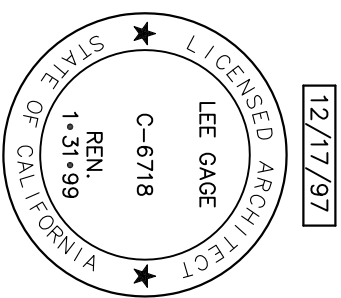
5 CORNER FILLER MODULE
1 1/2" = 1'-0"



5A TRANSACTION COUNTER MODULE
1 1/2" = 1'-0"



ISOMETRIC OF TYPICAL MODULE



C:\SDSKPROJ\SouthSFO\DWG\SFO-A17B.DWG

LEE GAGE C-6718

by _____ date _____
drawn _____
checked _____
revised _____
revised _____
Project no. _____
Sheet _____
Set No. _____
A17B

PROPOSED:
HAMPTON INN
CORPORATE DRIVE
SOUTH SAN FRANCISCO, CA.

THESE DRAWINGS, DESIGNS, SKETCHES, IDEAS & ARRANGEMENTS ARE THE SOLE & EXCLUSIVE PROPERTY OF LEE GAGE & ASSOCIATES, AND WERE CREATED AND DEVELOPED BY AND FOR THE ARCHITECT'S EXCLUSIVE USE ON AND IN CONJUNCTION WITH THE ARCHITECT'S WORK. NOTHING CONTAINED OR REPRESENTED ON THESE DOCUMENTS SHALL BE USED BY OR DISCLOSED TO ANY PERSON, FIRM OR CORPORATION FOR ANY PURPOSE WITHOUT EXPRESSED WRITTEN CONSENT OF LEE GAGE & ASSOCIATES.

lee gage & associates
architects • engineers • planners

7636 n. ingram suite 107 fresno, california 93711 phone (209) 439-2222

© LEE GAGE & ASSOC.