

THESE DRAWINGS, DESIGNS, SKETCHES, IDEAS & ARRANGEMENTS ARE THE SOLE & EXCLUSIVE PROPERTY OF LEE GAGE & ASSOCIATES, AND WERE CREATED AND DEVELOPED BY AND FOR THE ARCHITECT'S EXCLUSIVE USE ON AND IN CONJUNCTION WITH THE ARCHITECT'S WORK. NOTHING CONTAINED OR REPRESENTED ON THESE DOCUMENTS SHALL BE USED BY OR DISCLOSED TO ANY PERSON, FIRM OR CORPORATION FOR ANY PURPOSE WITHOUT EXPRESSED WRITTEN CONSENT OF LEE GAGE & ASSOCIATES.

PROPOSED:
HAMPTON INN
CORPORATE DRIVE
SOUTH SAN FRANCISCO, CA.

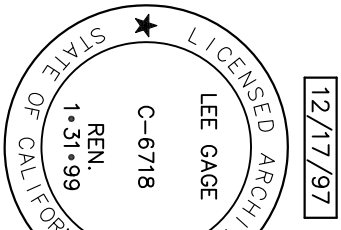
by _____ date _____

drawn _____

checked _____

revised _____

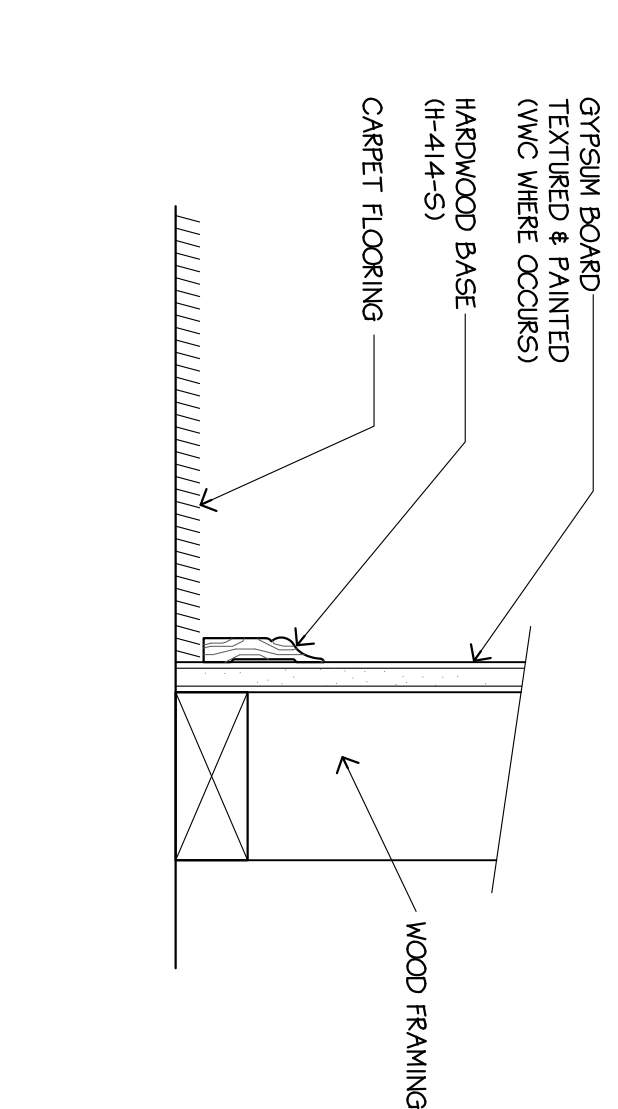
project no. _____



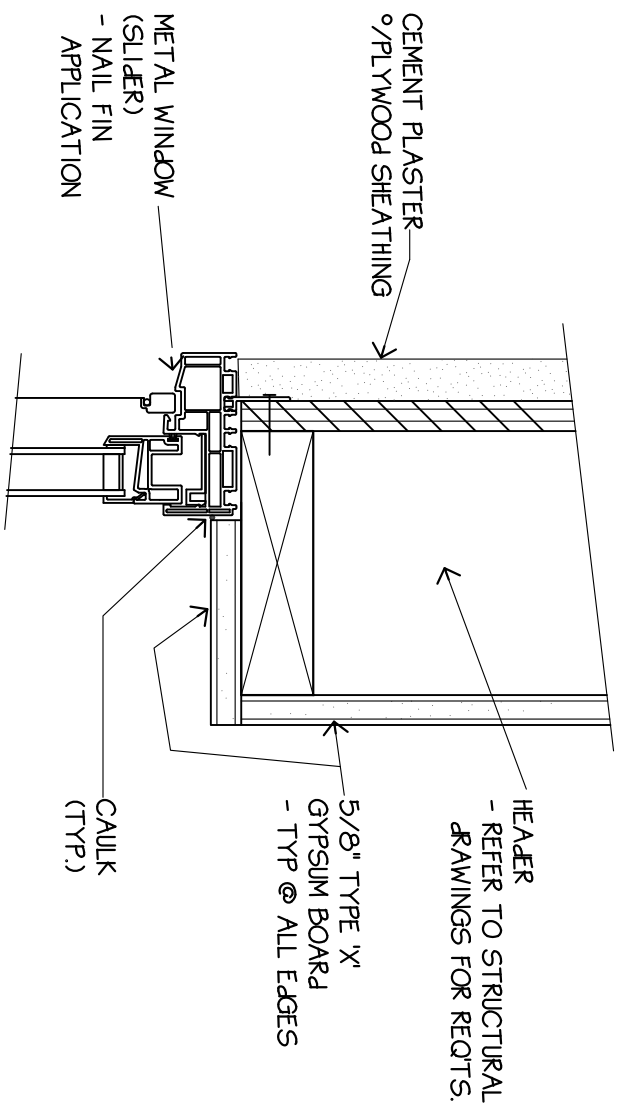
C:\SDSKPROJ\SouthSF0\DWG\SFO-A18.DWG

LEE GAGE C-6718

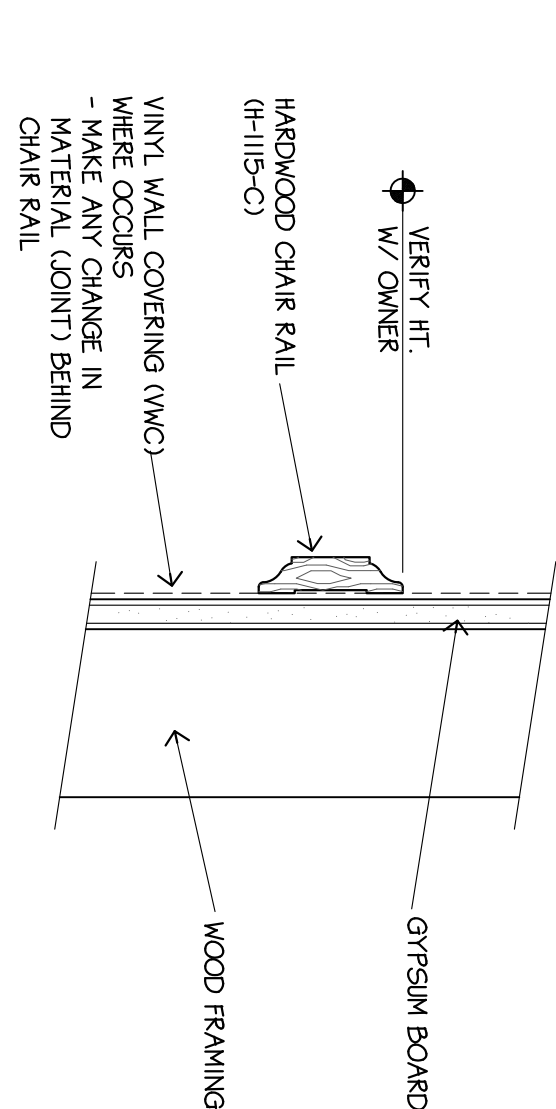
NOTE:
HARDWOOD TRIM IS DETAILED
AS BY THE HIGHWAY LUMBER COMPANY
- SACRAMENTO: (916) 927-2727



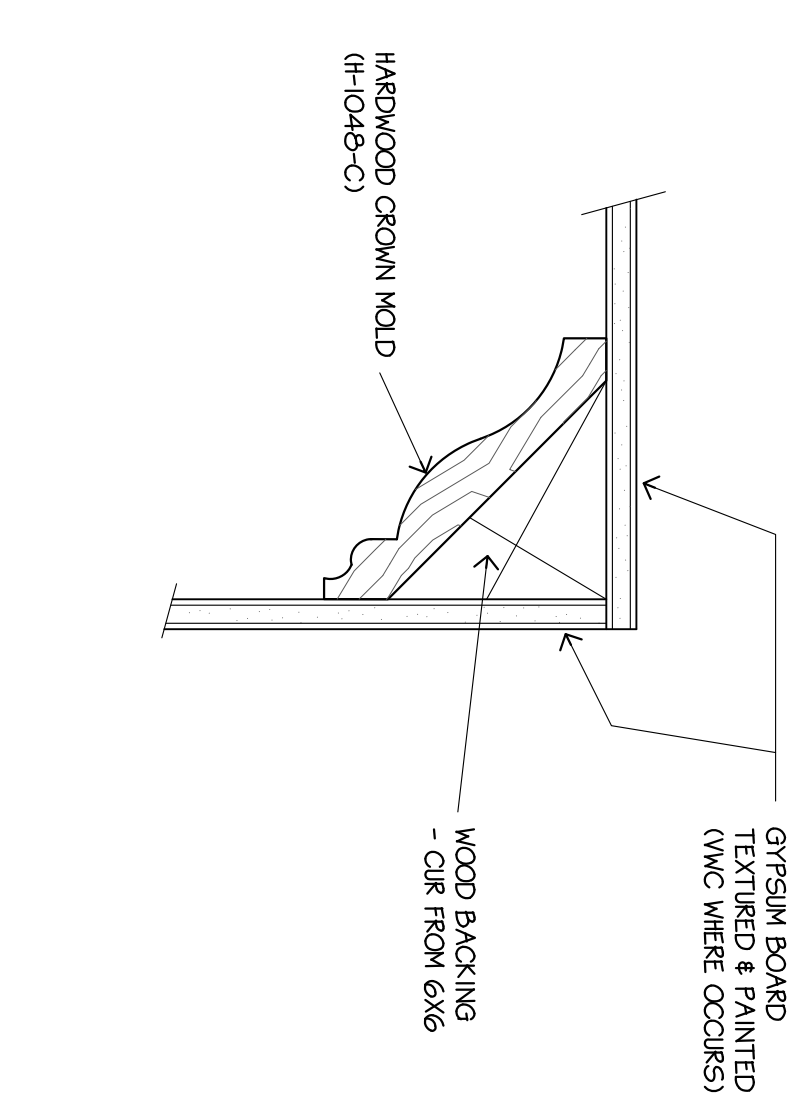
SCALE: 3/4"=1'-0"
1
A18
DETAIL



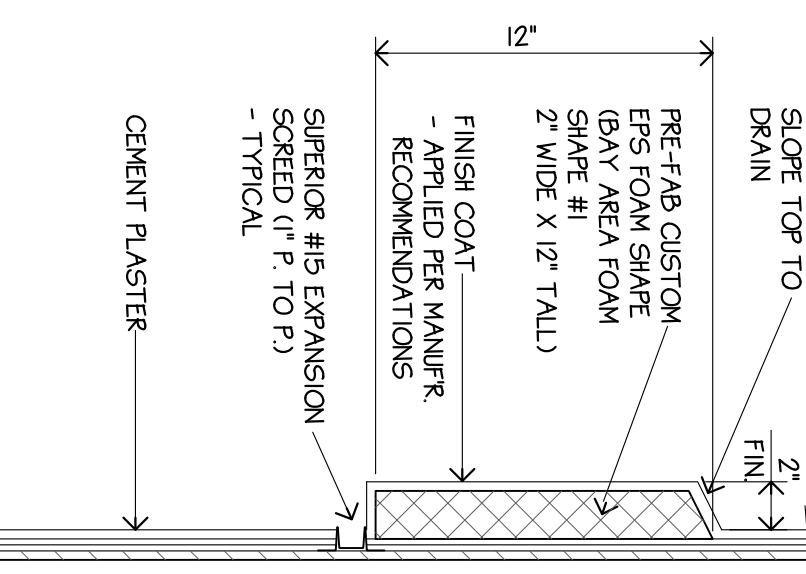
SCALE: 3/4"=1'-0"
4
A18
WINDOW - HEAD (AMB SIMILAR)



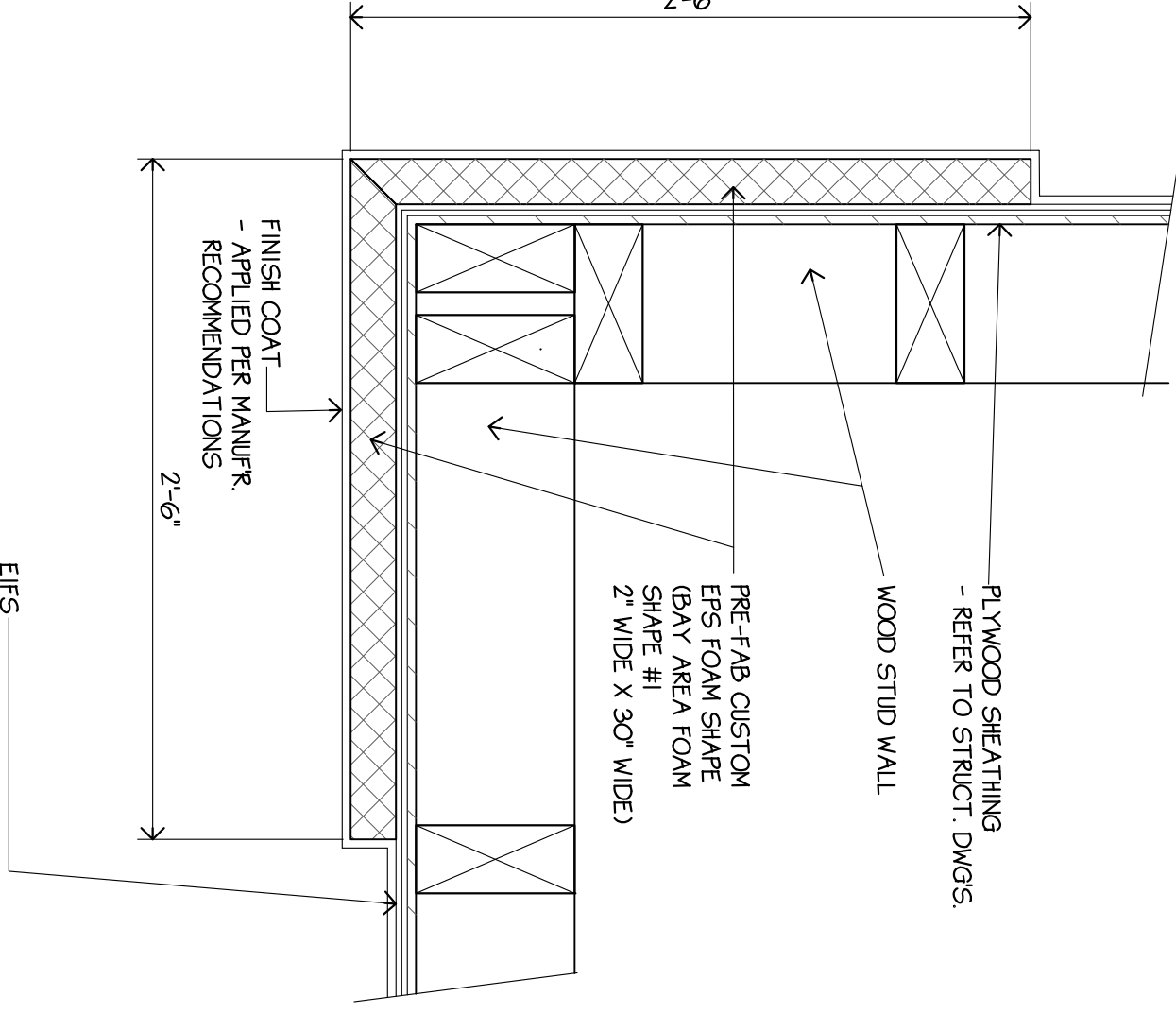
SCALE: 3/4"=1'-0"
2
A18
DETAIL



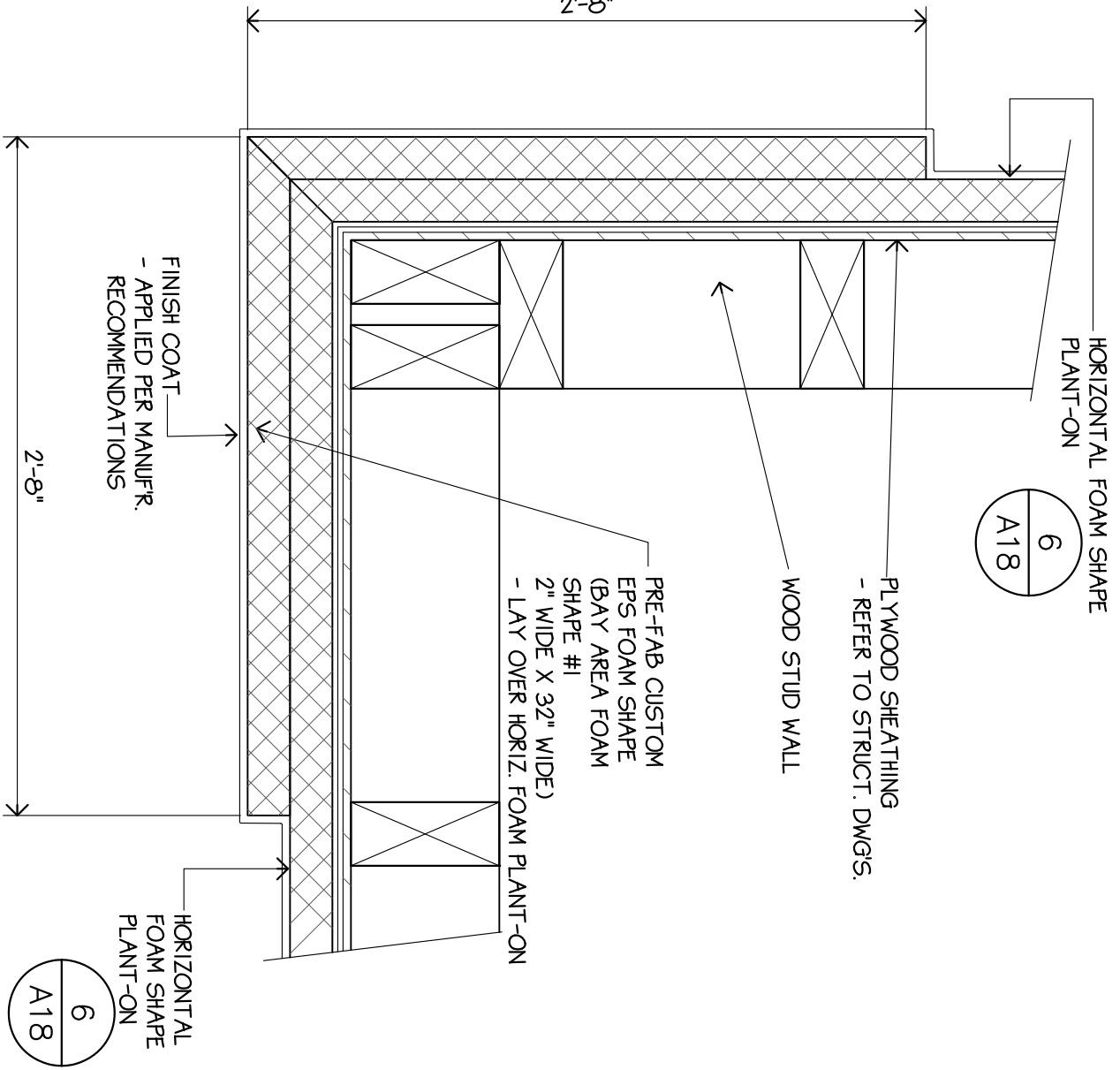
SCALE: 3/4"=1'-0"
3
A18
DETAIL



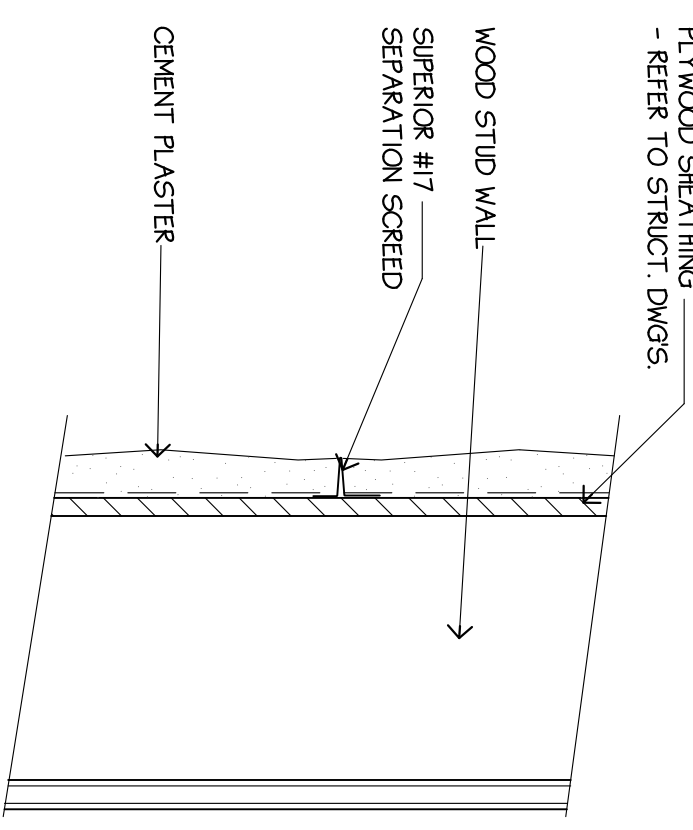
5
A18
NOT USED



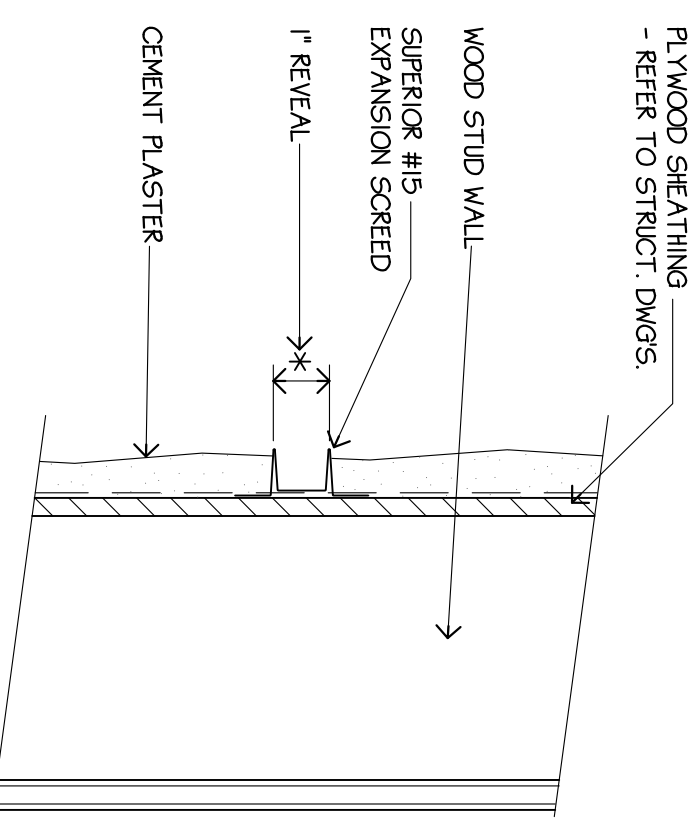
SCALE: 1 1/2"=1'-0"
7
A18
DETAIL



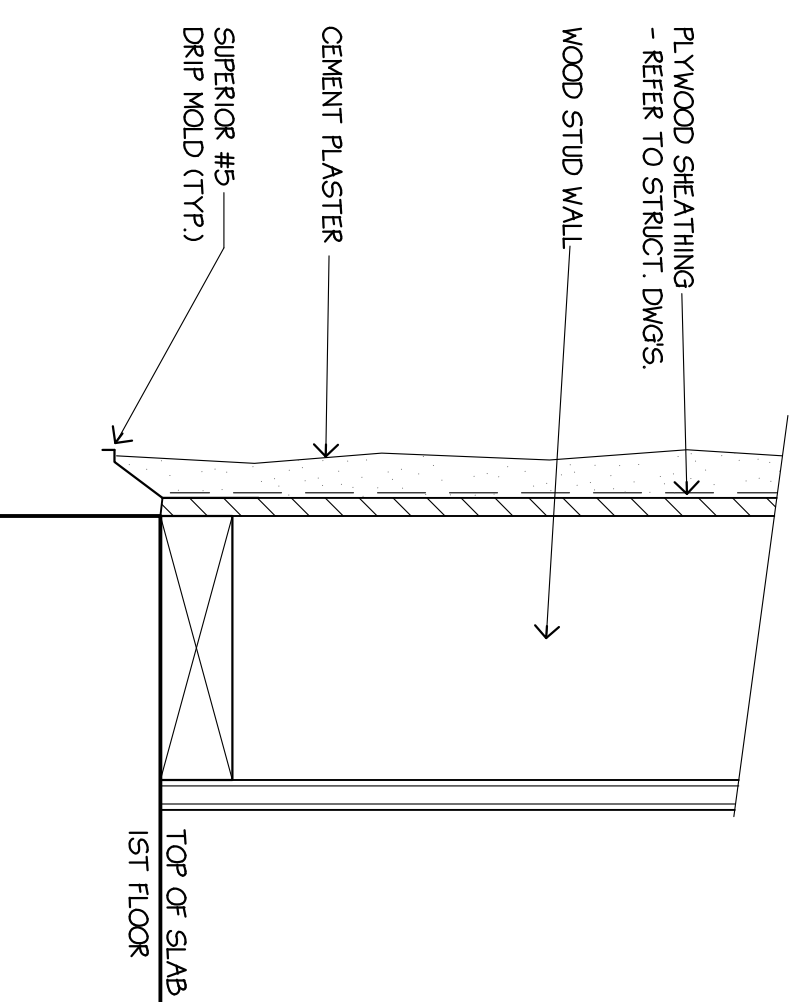
SCALE: 3/4"=1'-0"
8
A18
DETAIL



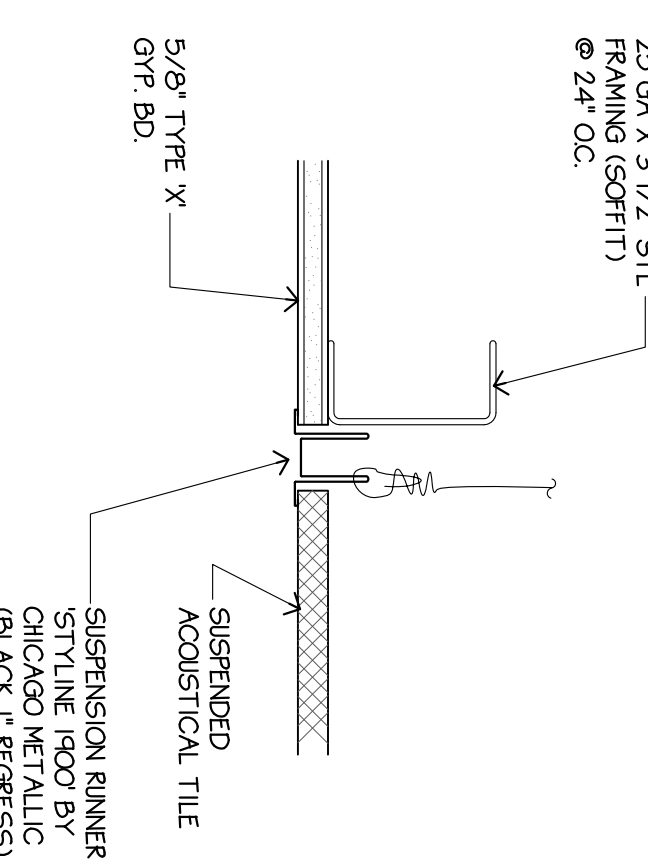
SCALE: 3/4"=1'-0"
9
A18
DETAIL



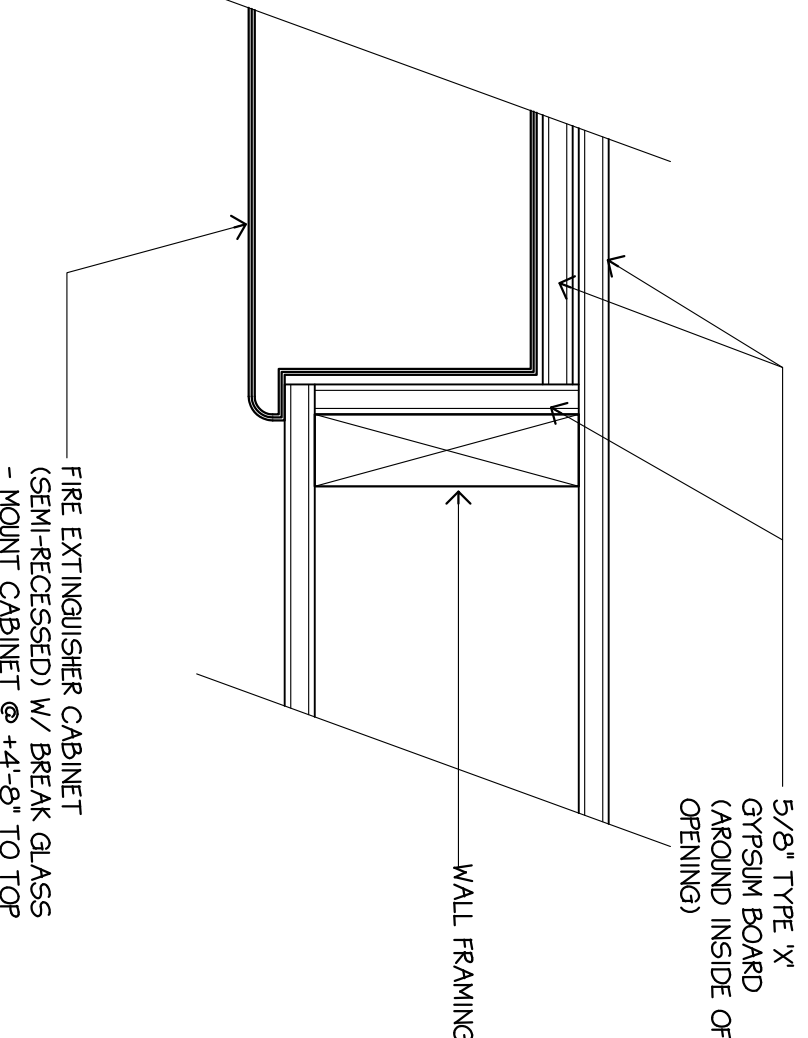
SCALE: 3/4"=1'-0"
10
A18
DETAIL



SCALE: 3/4"=1'-0"
11
A18
DETAIL



SCALE: 3/4"=1'-0"
12
A18
DETAIL



SCALE: 3/4"=1'-0"
13
A18
DETAIL

SCALE: 3/4"=1'-0"
14
A18
DETAIL