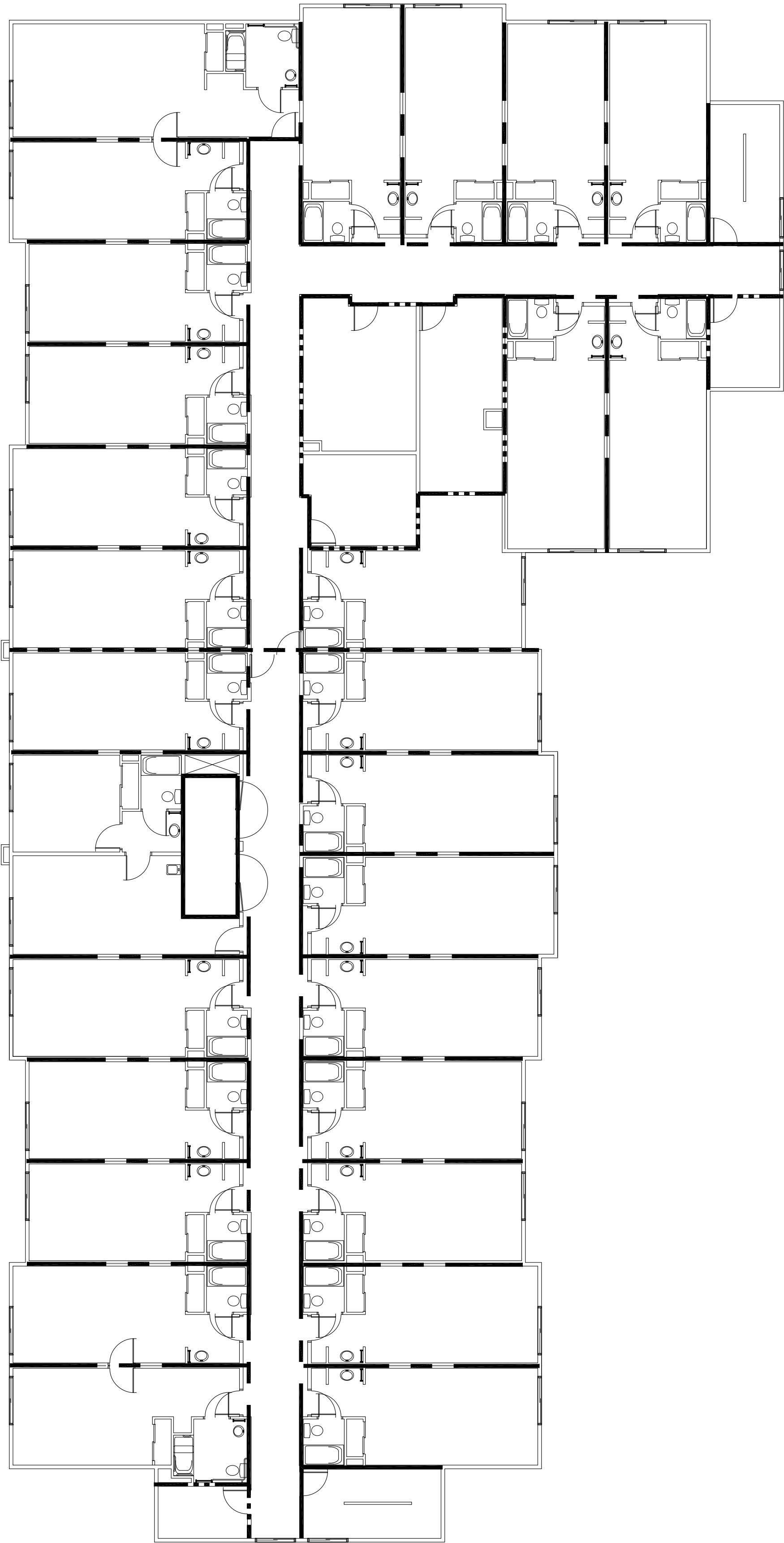




4th FLOOR

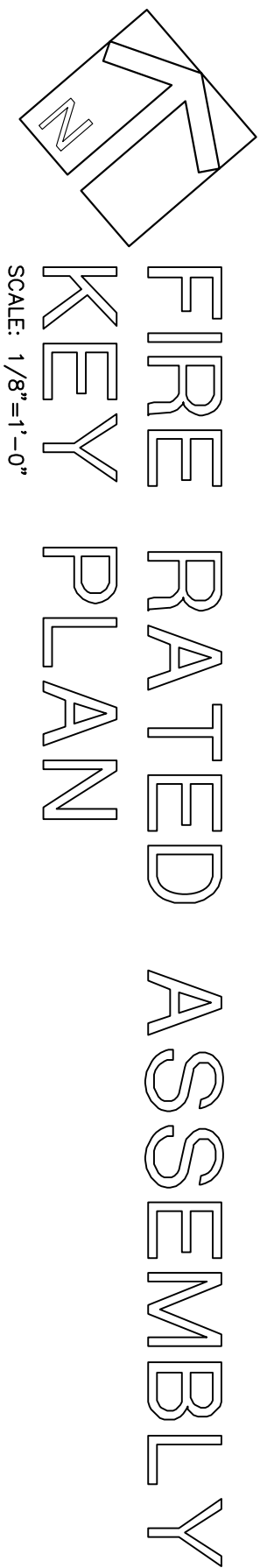


3rd FLOOR

LEGEND		
SYMBOL	DESCRIPTION	DETAIL REFERENCE
---	2HR AREA SEPARATION	SHEET A119 (ALL DETAILS)
---	1HR OCC. SEPARATION	1/A10
---	1HR FIRE SEPARATION	1/A10 - TYPICAL CORRIDOR 3/A10 - CORRIDOR/RESTROOM SEP. 7/A10, 9/A10
---	2HR FIRE RATED ENCLOSURE	4/A10

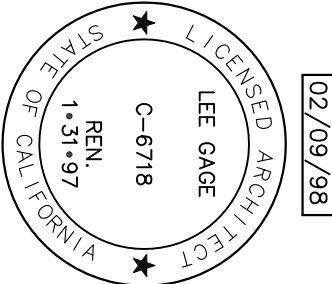
FIRE STOP INDEX		
U.L. LISTING	FIRE RATING	THROUGH PENETRANTS
WL2088	1 HR. WALL	2" (MAX.) SCH. 40 P.V.C. CPVC USED IN A CLOSED OR VENTED SYSTEM
WL2088	1,2 HR. WALL	3" (MAX.) SCH. 40 P.V.C. CPVC USED IN A CLOSED SYSTEM
WL1001	1, 2 HR. WALL	4" (MAX.) SCH. 10 (OR HEAVIER) STEEL SOL. PIPE, SERV. WT. (OR HEAVIER) CAST IRON PIPE, SERV. WT. (OR HEAVIER) DUCTILE IRON PRESS. PIPE, STEEL CONDUIT, STEEL EMT, (MAX.) STEEL (OR HEAVIER) COPPER TUBING, 1" (MAX.) FLEX. STL. CONDUIT
FC1006	1 HR. FLOOR/CEILING	4" (MAX.) SCH. 10 (OR HEAVIER) STEEL PIPE, SERV. WT. (OR HEAVIER) CAST IRON SOL. PIPE, STEEL CONDUIT, STEEL EMT 3" (MAX.) TYPE L (OR HEAVIER) COPPER TUBING

NOTE: SEALANT SHALL BE BY 3M (OR EQUAL)



KEY PLAN

SCALE: 1/8"=1'-0"



LEE GAGE C-6718

by	JLG	date
drawn		
checked		
revised		
revised		
Project no.		

Sheet  
SET NO.

FS2

PROPOSED:  
**HAMPTON INN**  
SOUTH SAN FRANCISCO, CA.

THESE DRAWINGS, DESIGNS, SKETCHES, IDEAS & ARRANGEMENTS ARE THE SOLE & EXCLUSIVE PROPERTY OF LEE GAGE & ASSOCIATES, AND WERE CREATED AND DEVELOPED BY AND FOR THE ARCHITECT'S EXCLUSIVE USE ON AND IN CONJUNCTION WITH THE ARCHITECT'S WORK. NOTHING CONTAINED OR REPRESENTED ON THESE DOCUMENTS SHALL BE USED BY OR DISCLOSED TO ANY PERSON, FIRM OR CORPORATION FOR ANY PURPOSE WITHOUT EXPRESSED WRITTEN CONSENT OF LEE GAGE & ASSOCIATES.

**lee gage & associates**  
architects • engineers • planners

7636 n. ingram suite 107 fresno, california 93711 phone (209) 439-2222

© LEE GAGE & ASSOC.