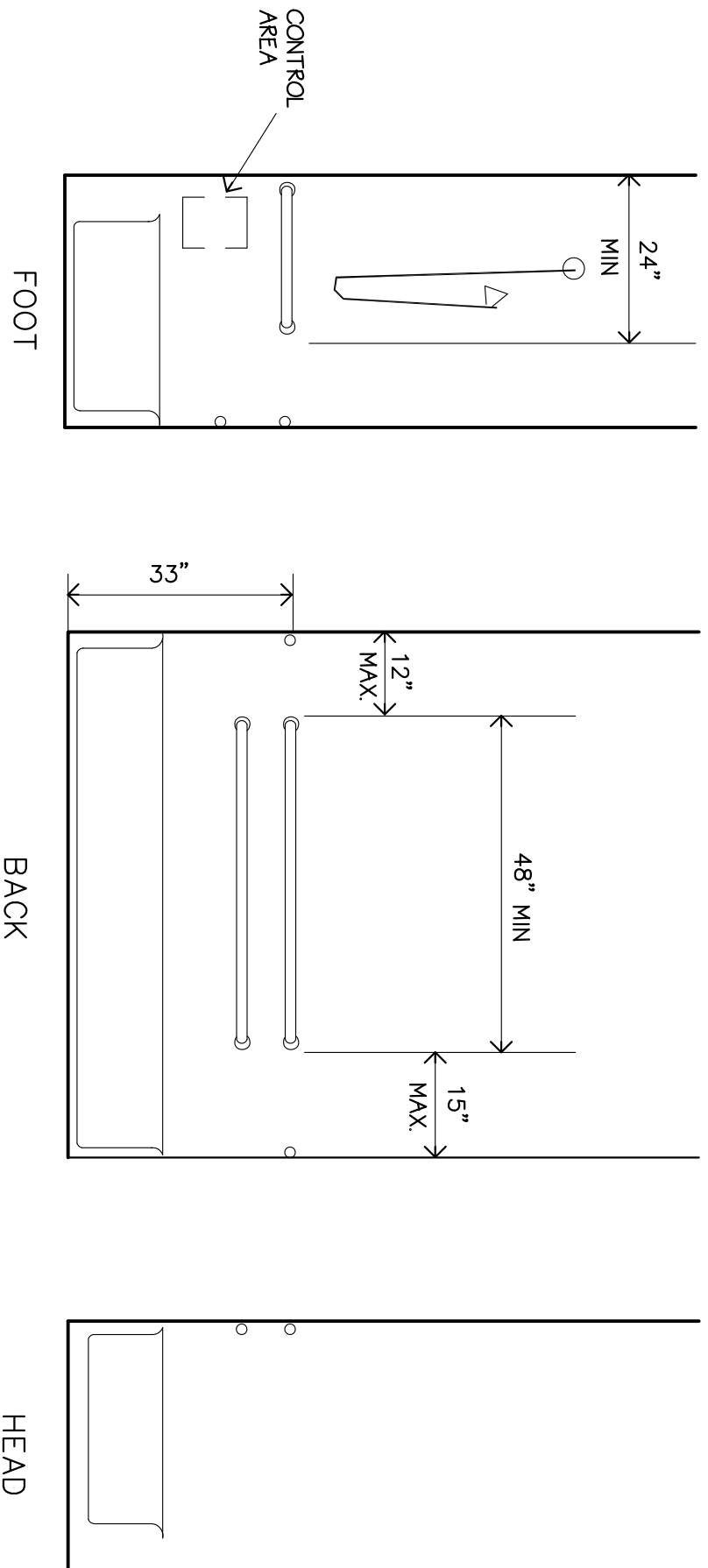
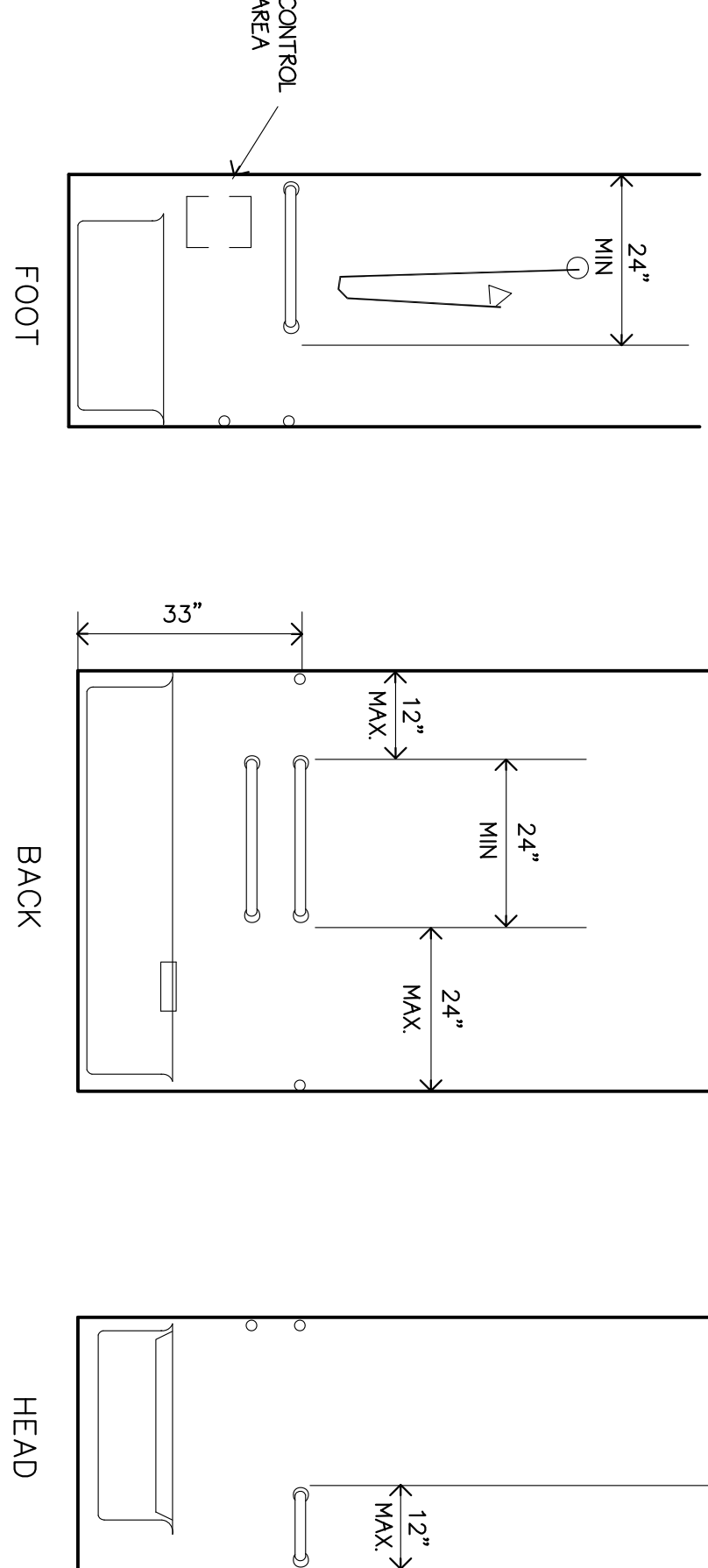
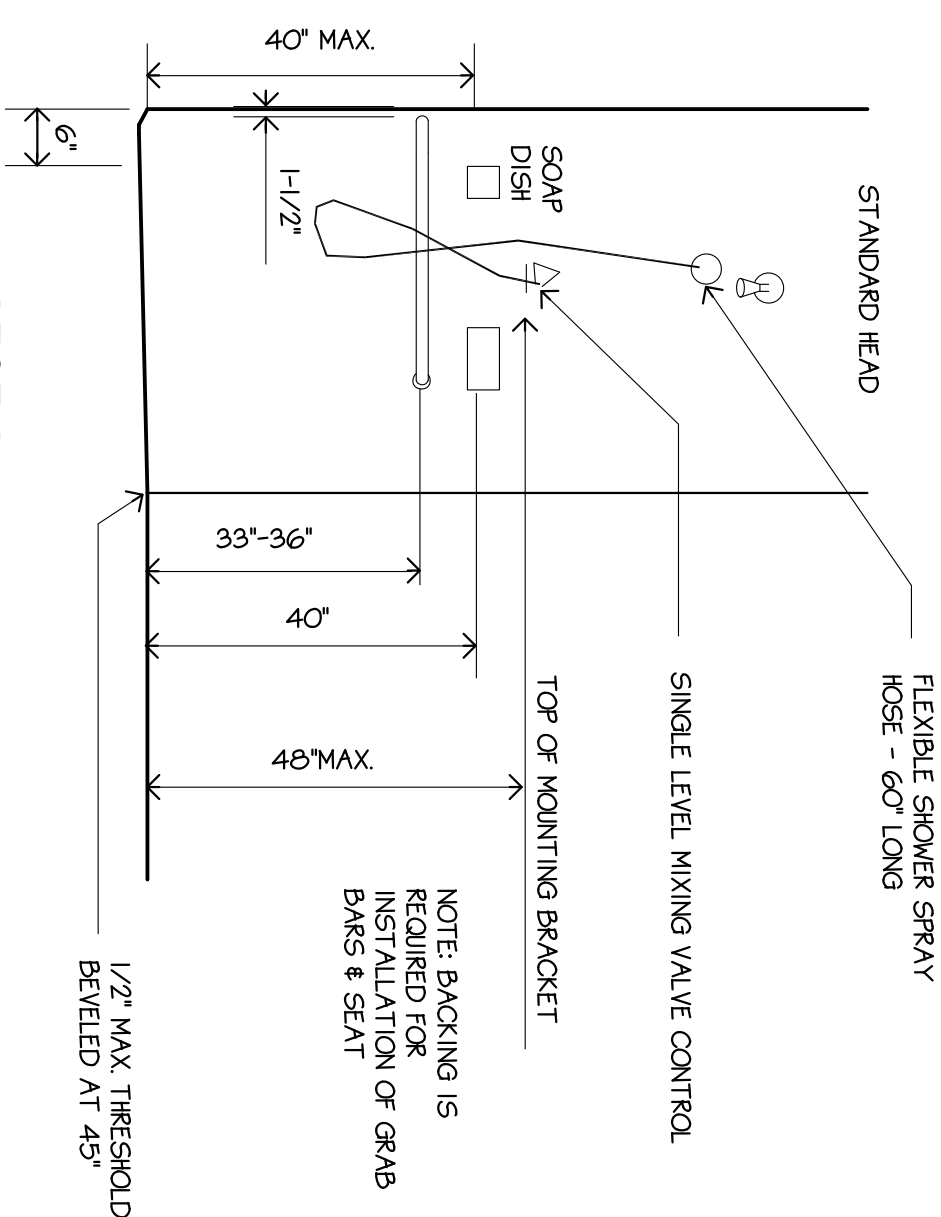
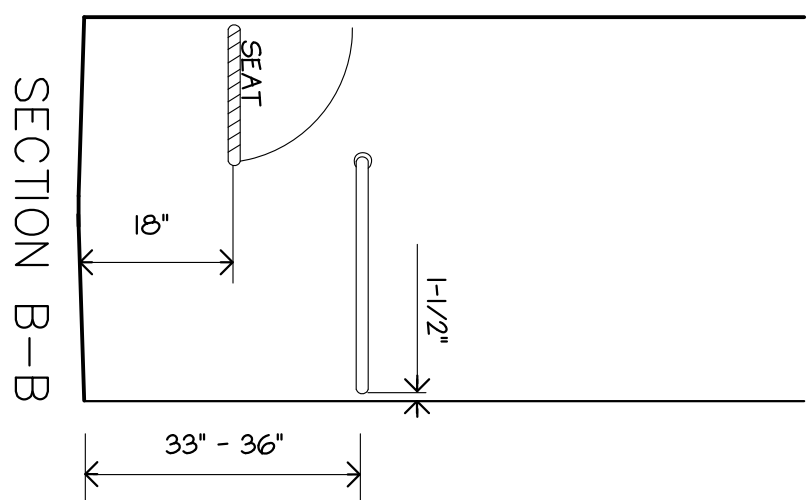
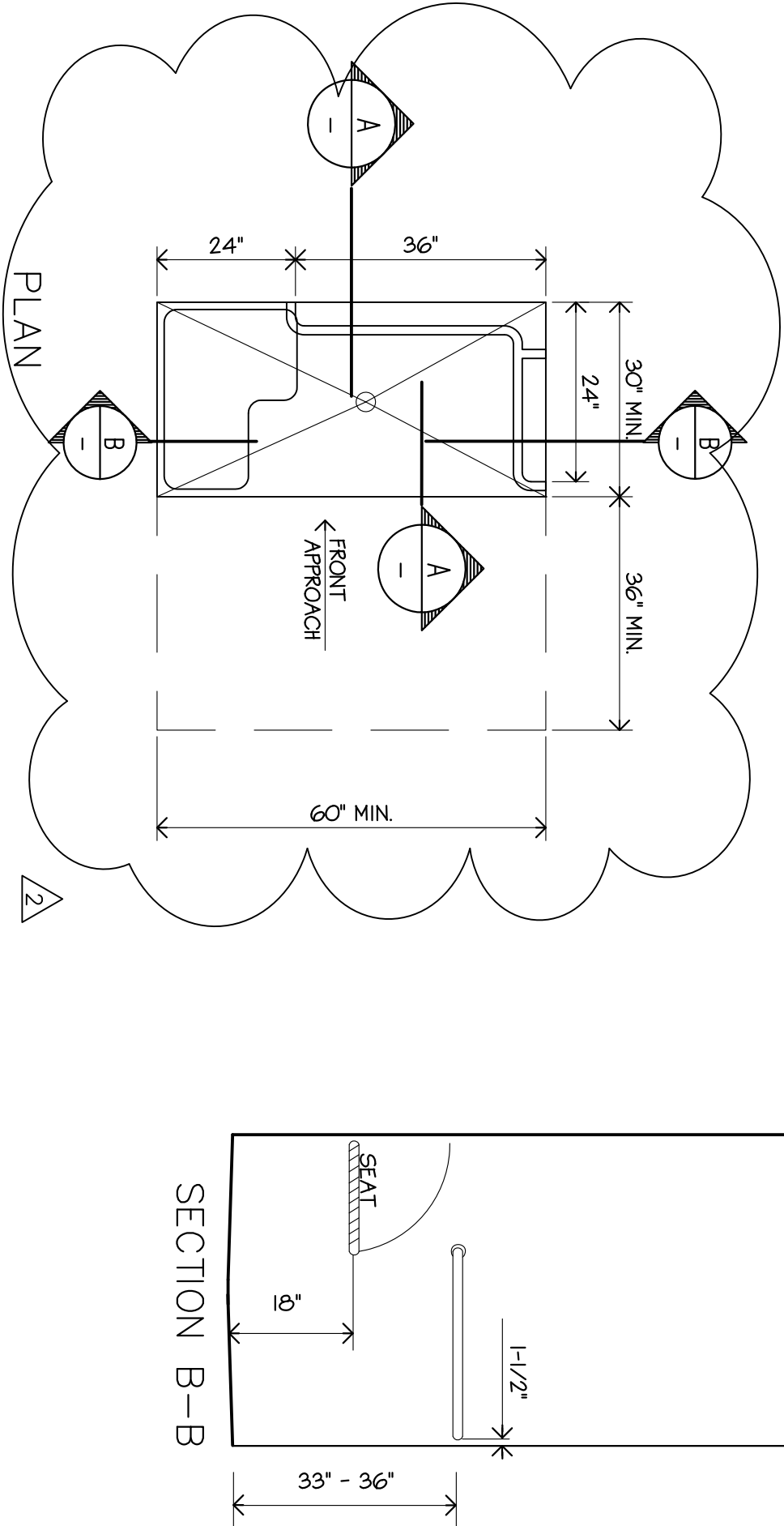


CLEAR FLOOR SPACE  
AT BATHTUBS



GRAB BARS AT BATHTUBS



ROLL-IN SHOWER STALL

REVISIONS PER  
CITY OF SOUTH SAN FRANCISCO  
3/11/98

REVISIONS PER  
CITY OF SOUTH SAN FRANCISCO  
2/5/98

03/16/98  
LEE GAGE  
C-6718  
RBN  
1-31-97  
LICENSED ARCHITECT  
STATE OF CALIFORNIA

C:\SDSKPROJ\ \SOUTH SFO\DWG\ SFO-HS2.DWG

PROPOSED:  
HAMPTON INN  
CORPORATE DRIVE  
SOUTH SAN FRANCISCO, CA.

THESE DRAWINGS, DESIGNS, SKETCHES, IDEAS & ARRANGEMENTS ARE THE SOLE & EXCLUSIVE PROPERTY OF LEE GAGE & ASSOCIATES, AND WERE CREATED AND DEVELOPED BY AND FOR THE ARCHITECT'S EXCLUSIVE USE ON AND IN CONJUNCTION WITH THE ARCHITECT'S WORK. NOTHING CONTAINED OR REPRESENTED ON THESE DOCUMENTS SHALL BE USED BY OR DISCLOSED TO ANY PERSON, FIRM OR CORPORATION FOR ANY PURPOSE WITHOUT EXPRESSED WRITTEN CONSENT OF LEE GAGE & ASSOCIATES.

lee gage & associates  
architects • engineers • planners

7636 n. ingram suite 107 fresno, california 93711 phone (209) 439-2222

© LEE GAGE & ASSOC.