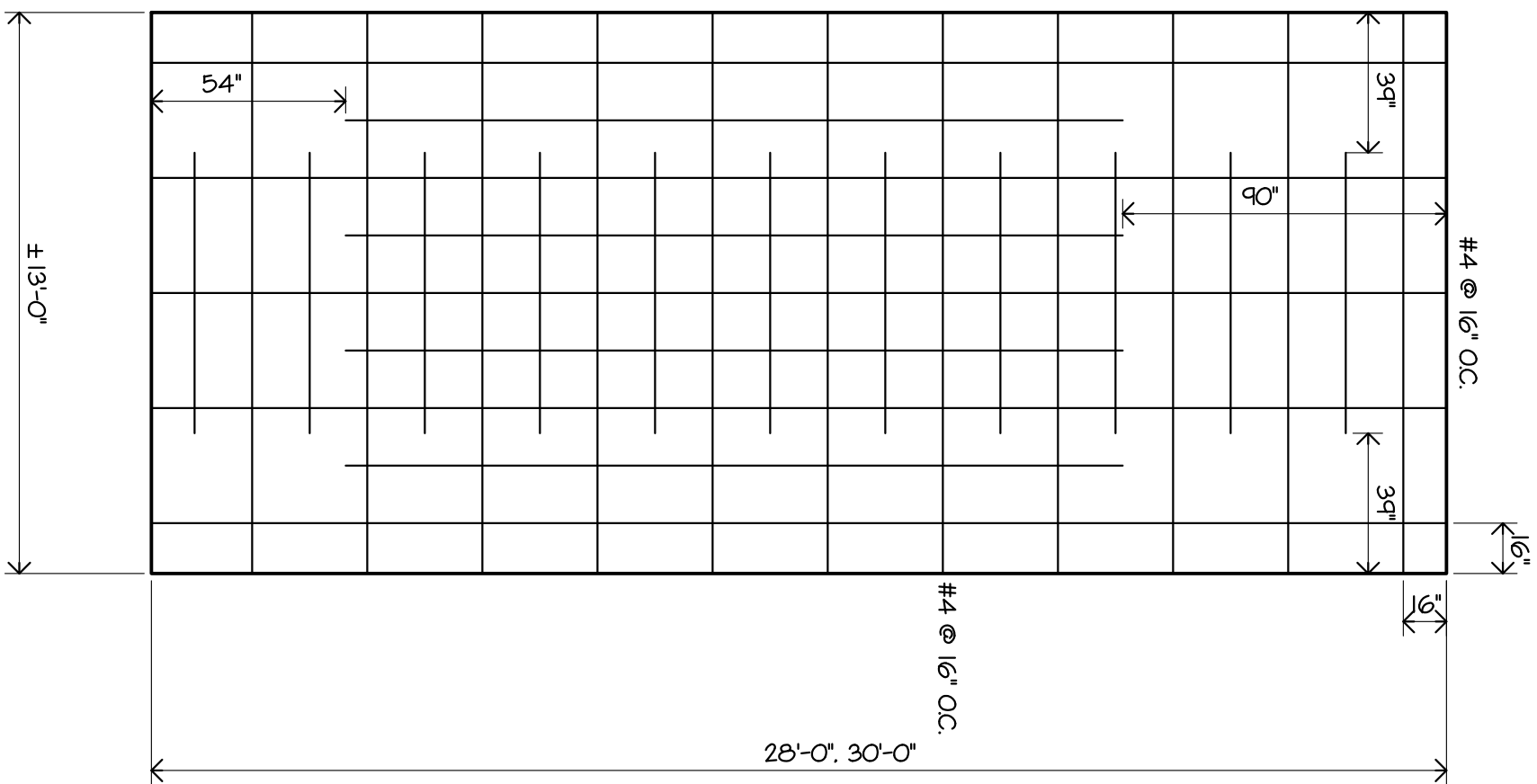


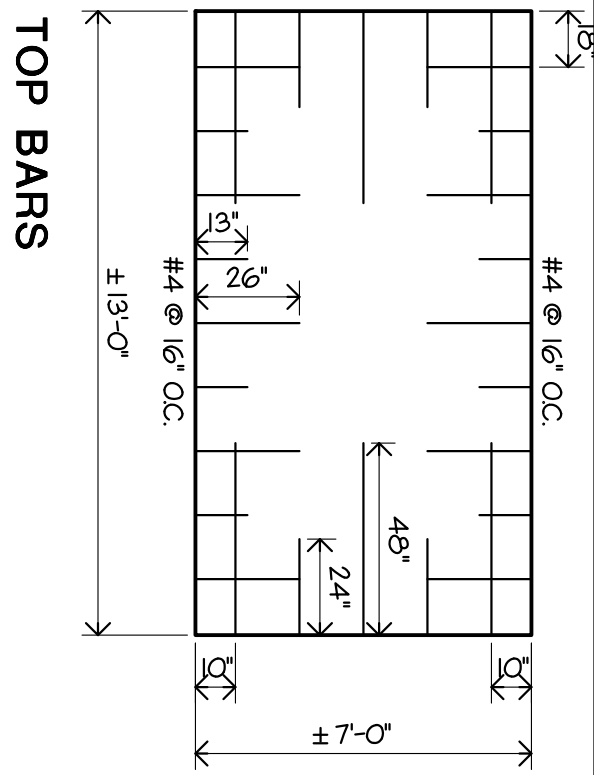
TOP BARS



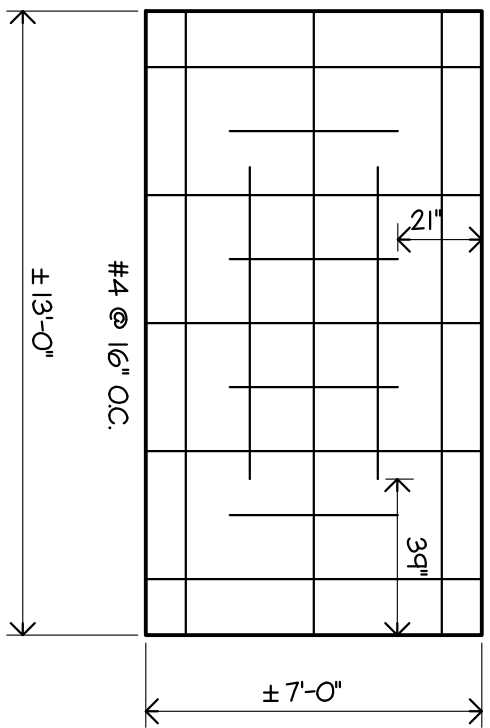
BOTTOM BARS

NOTE:
ALTERNATE REBAR LAYOUT FOR ALL SLAB AREAS
MAY BE #4 BARS @ 16" OC. EACH WAY (TOP & BOTTOM OF SLAB)

1 **SLAB A**
SCALE: 1/4" = 1'-0" (THICKNESS = 6 1/2")



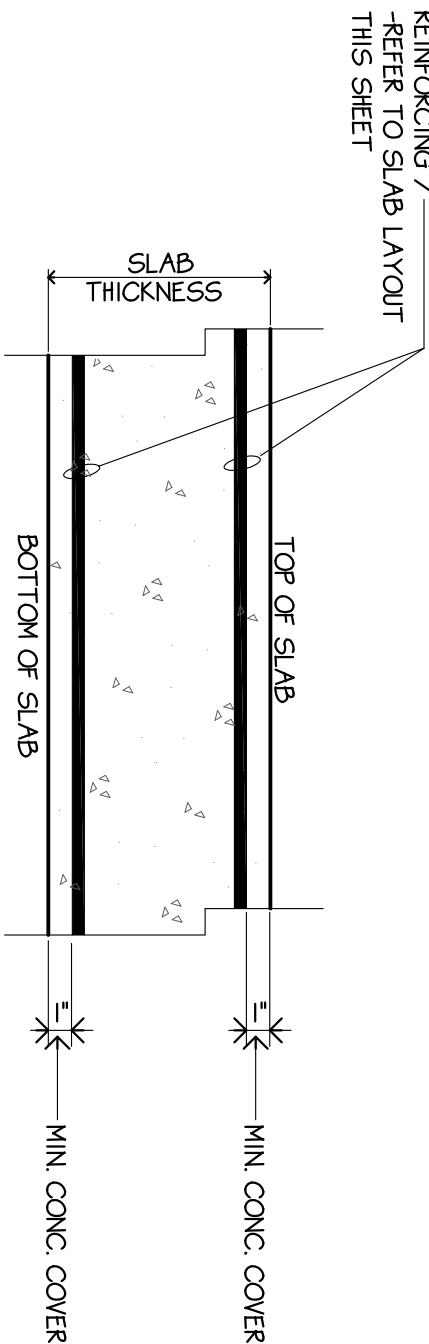
TOP BARS



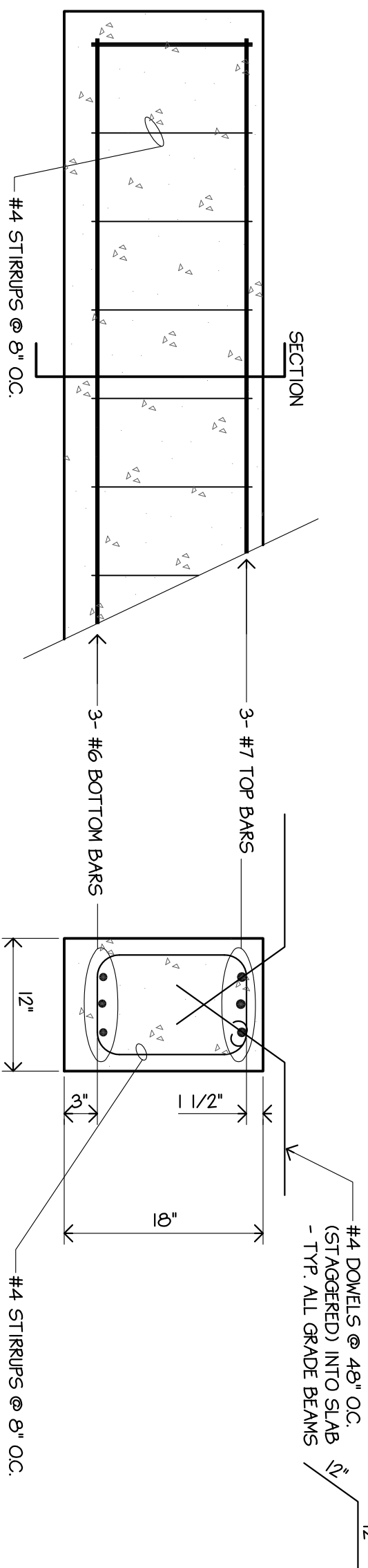
BOTTOM BARS

NOTE:
ALTERNATE REBAR LAYOUT FOR ALL SLAB AREAS
MAY BE #4 BARS @ 16" OC. EACH WAY (TOP & BOTTOM OF SLAB)

2 **SLAB B**
SCALE: 1/4" = 1'-0" (THICKNESS = 4 1/2")

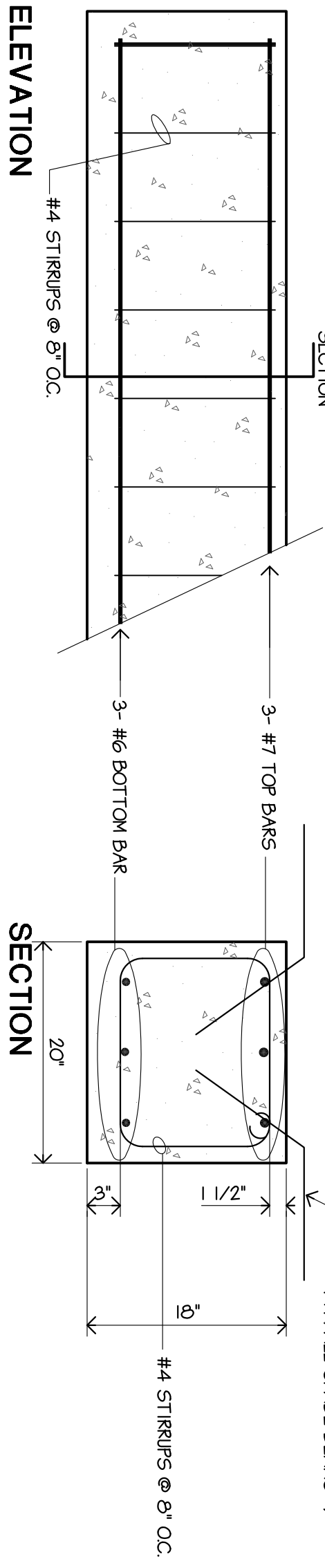


3 **DETAIL / SLAB SECTION**
SCALE: 1" = 1'-0"



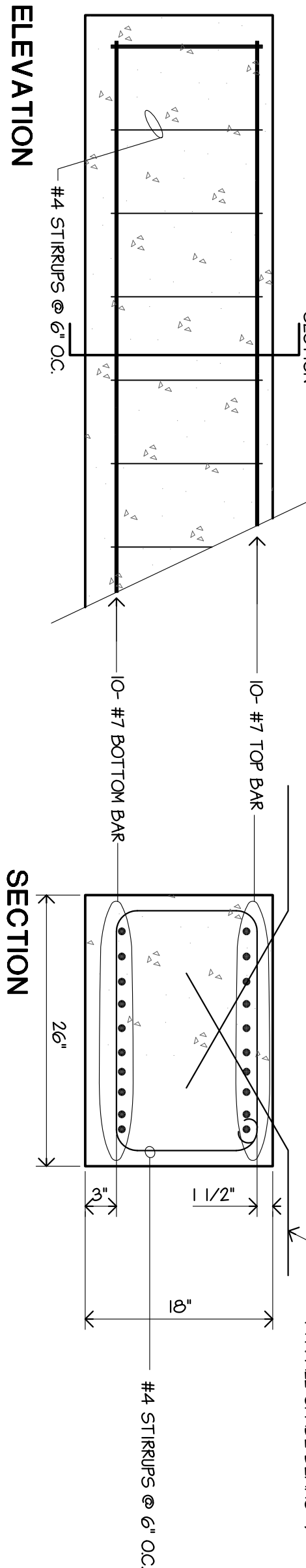
ELEVATION

4 **GRADE BEAM NO. 1 (PERIMETER)**
SCALE: 1" = 1'-0"



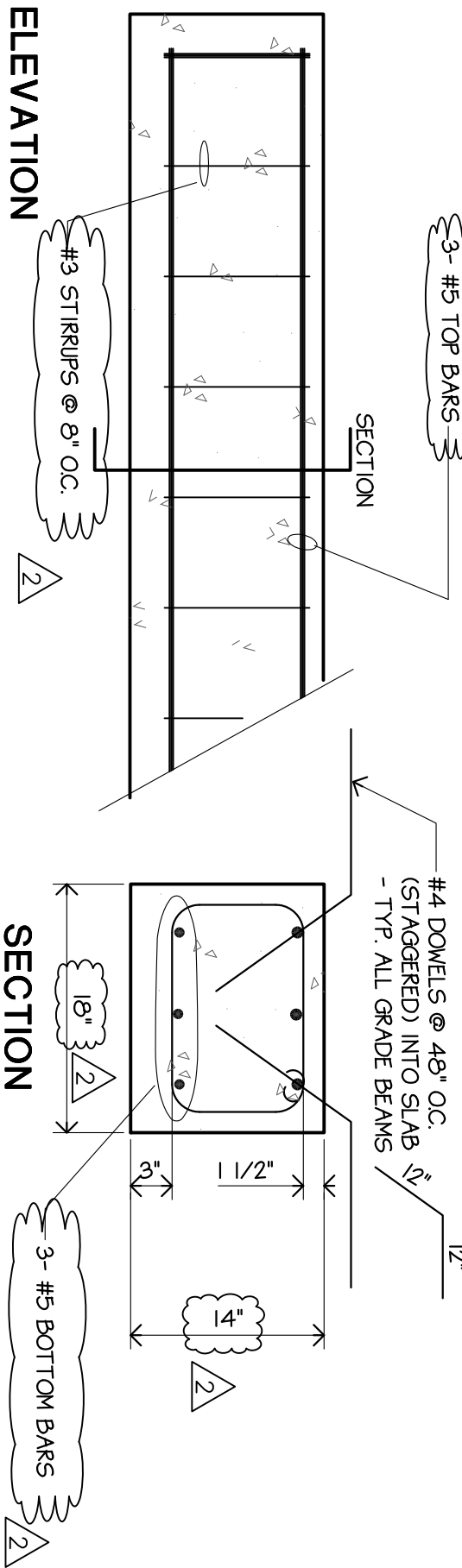
ELEVATION

5 **GRADE BEAM NO. 2 (HALLWAYS)**
SCALE: 1" = 1'-0"



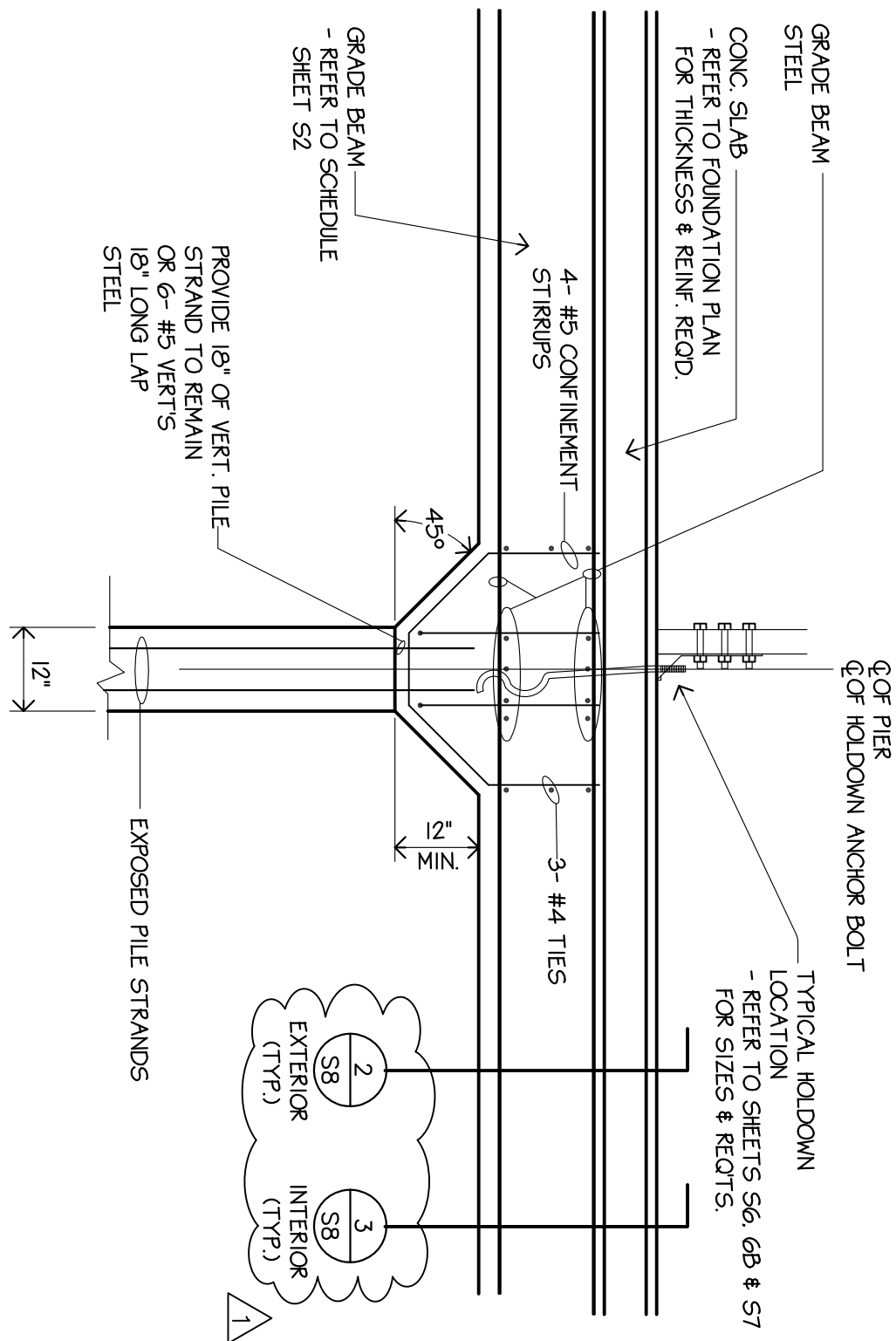
ELEVATION

6 **GRADE BEAM NO. 3 (UNIT WALLS)**
SCALE: 1" = 1'-0"

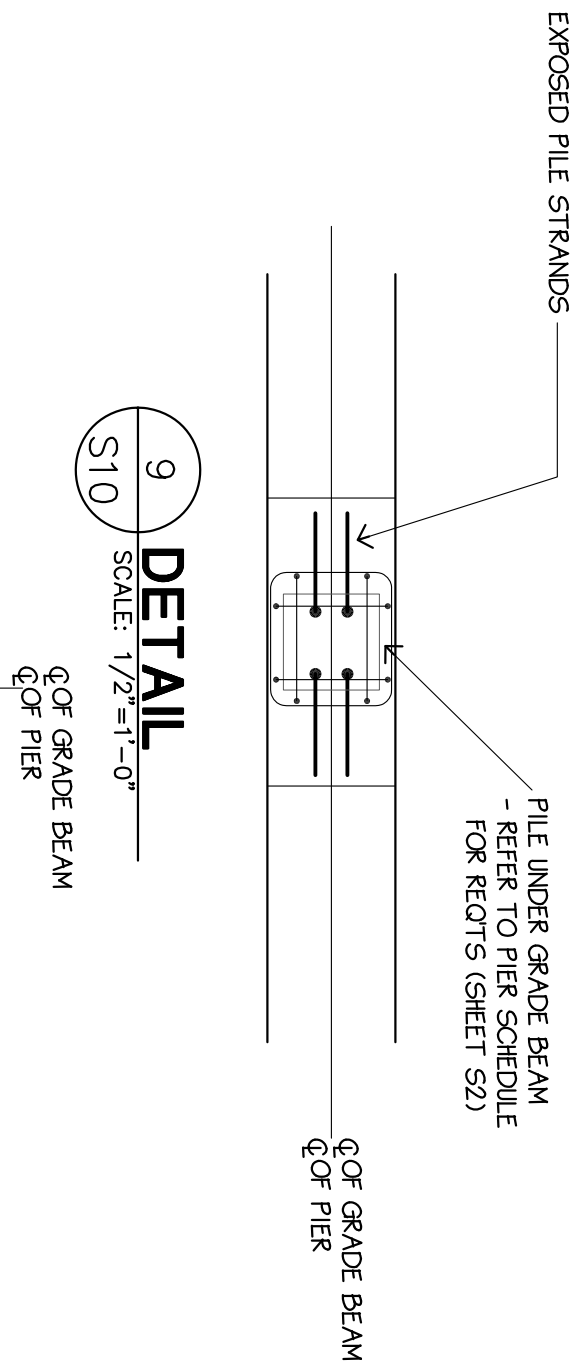


ELEVATION

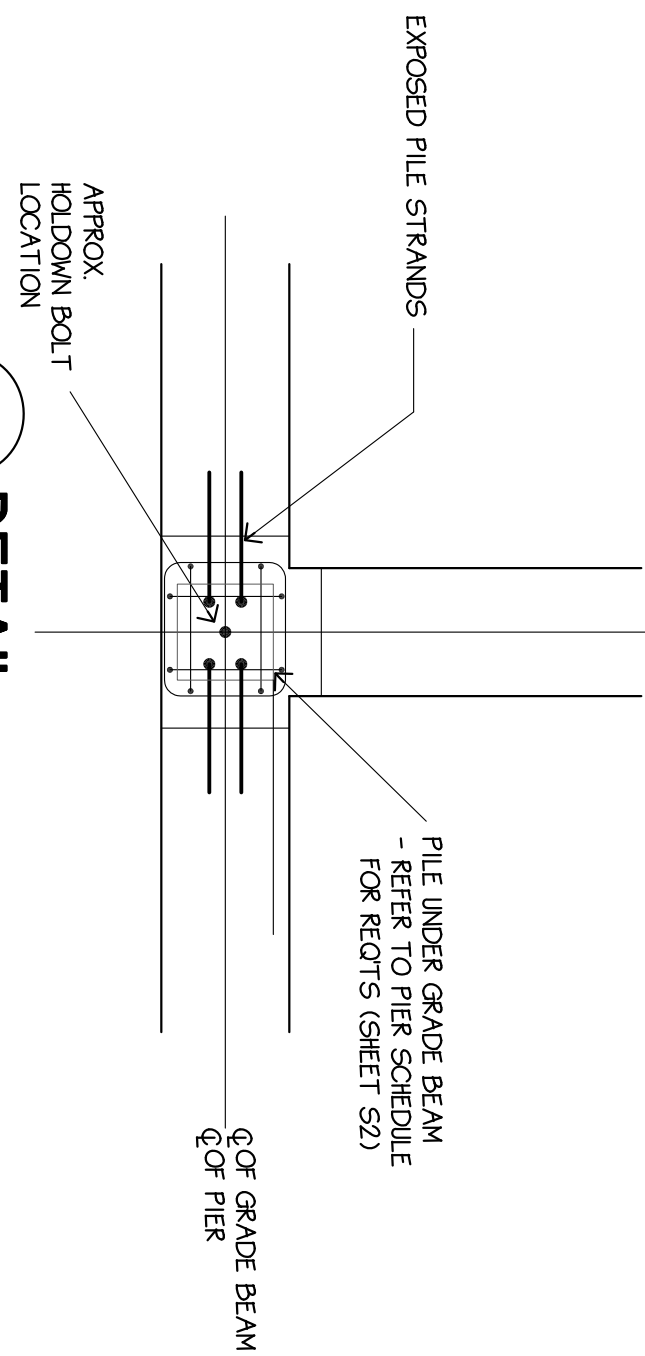
7 **GRADE BEAM NO. 4 (PORTE-COCHERE PERIMETER)**
SCALE: 1" = 1'-0"



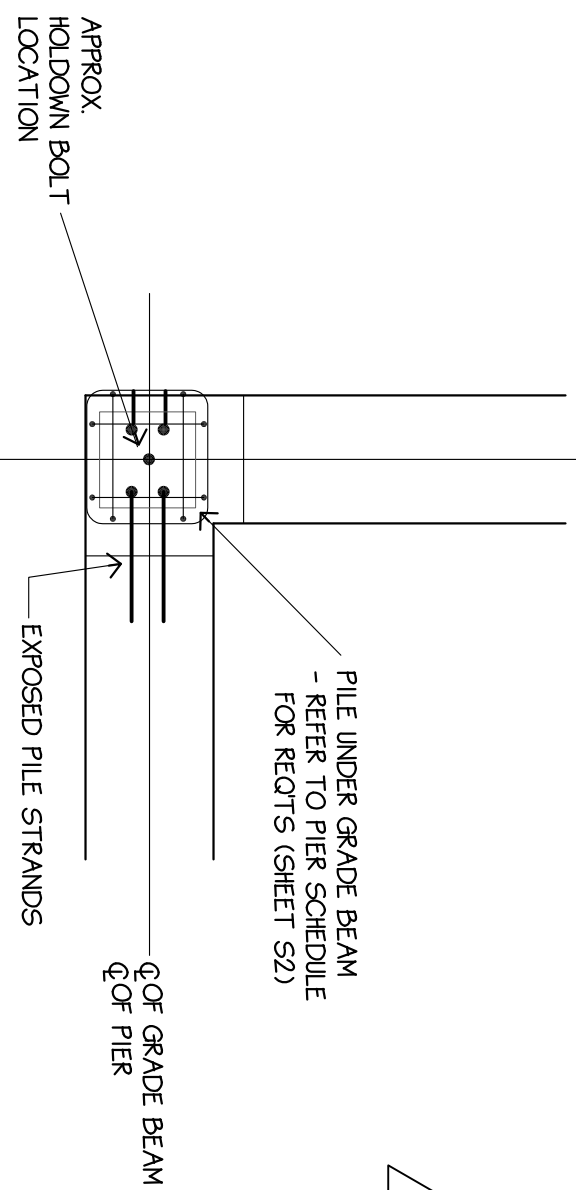
8 **DETAIL**
SCALE: 1/2" = 1'-0"



9 **DETAIL**
SCALE: 1/2" = 1'-0"



10 **DETAIL**
SCALE: 1/2" = 1'-0"



11 **DETAIL**
SCALE: 1/2" = 1'-0"

REVISIONS PER
CITY OF SOUTH SAN FRANCISCO
2/5/98

SFO/SFO-S10/DWG
[09/17/98]

LEE GAGE
C-6718
REN.
1.31.99
STATE OF CALIFORNIA
REGISTERED ARCHITECT

LEE GAGE C-6718

THESE DRAWINGS, DESIGNS, SKETCHES, IDEAS & ARRANGEMENTS ARE THE SOLE & EXCLUSIVE PROPERTY OF LEE GAGE & ASSOCIATES, AND WERE CREATED AND DEVELOPED BY AND FOR THE ARCHITECT'S EXCLUSIVE USE ON AND IN CONJUNCTION WITH THE ARCHITECT'S WORK. NOTHING CONTAINED OR REPRESENTED ON THESE DOCUMENTS SHALL BE USED BY OR DISCLOSED TO ANY PERSON, FIRM OR CORPORATION FOR ANY PURPOSE WITHOUT EXPRESSED WRITTEN CONSENT OF LEE GAGE & ASSOCIATES.

lee gage & associates
architects • engineers • planners

7636 n. ingram suite 107 fresno, california 93711 phone (209) 439-2222

© LEE GAGE & ASSOC.

by date
drawn
checked
revised
revised
project no.
S10
sheet