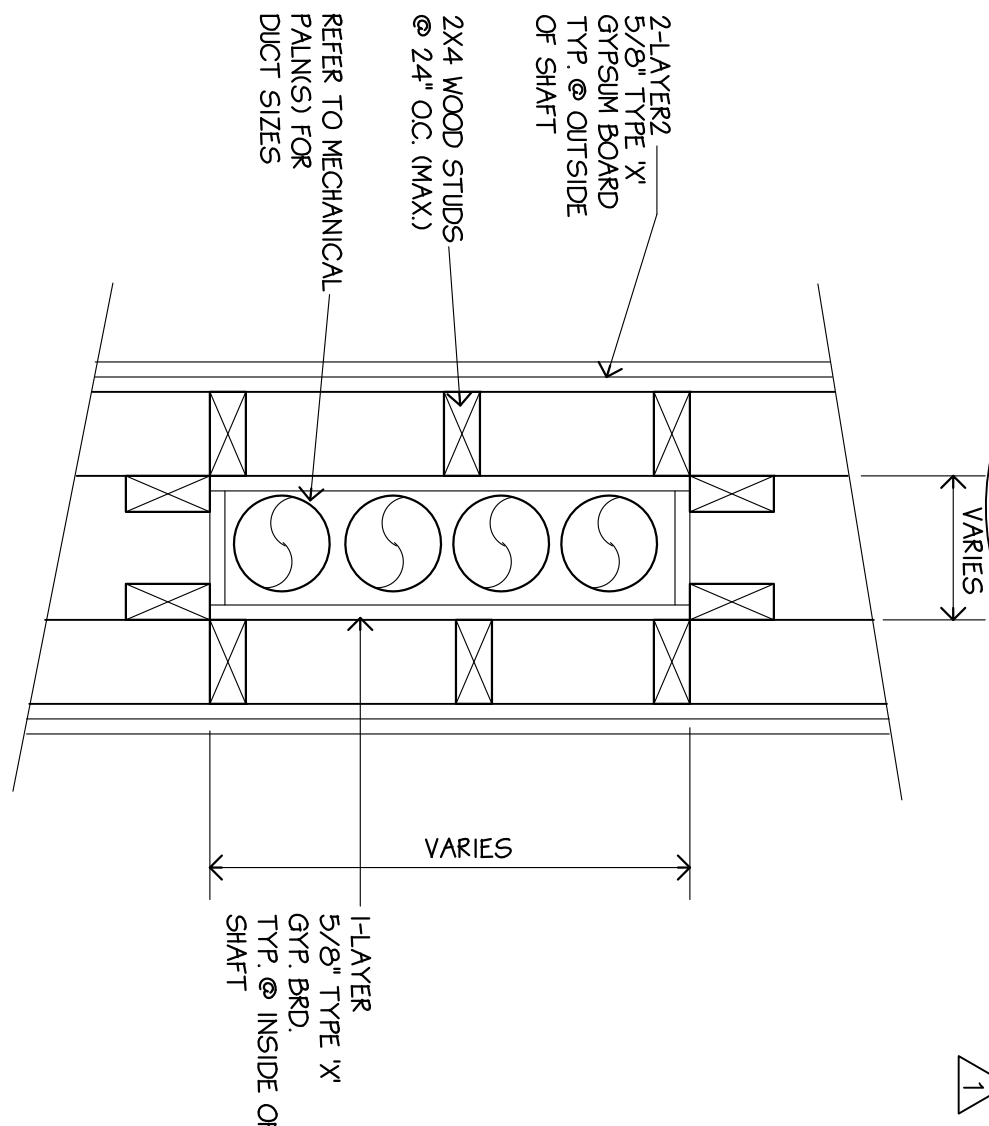


4 EXHAUST PLENUM DETAIL

M5 SCALE: 1"=1'-0"

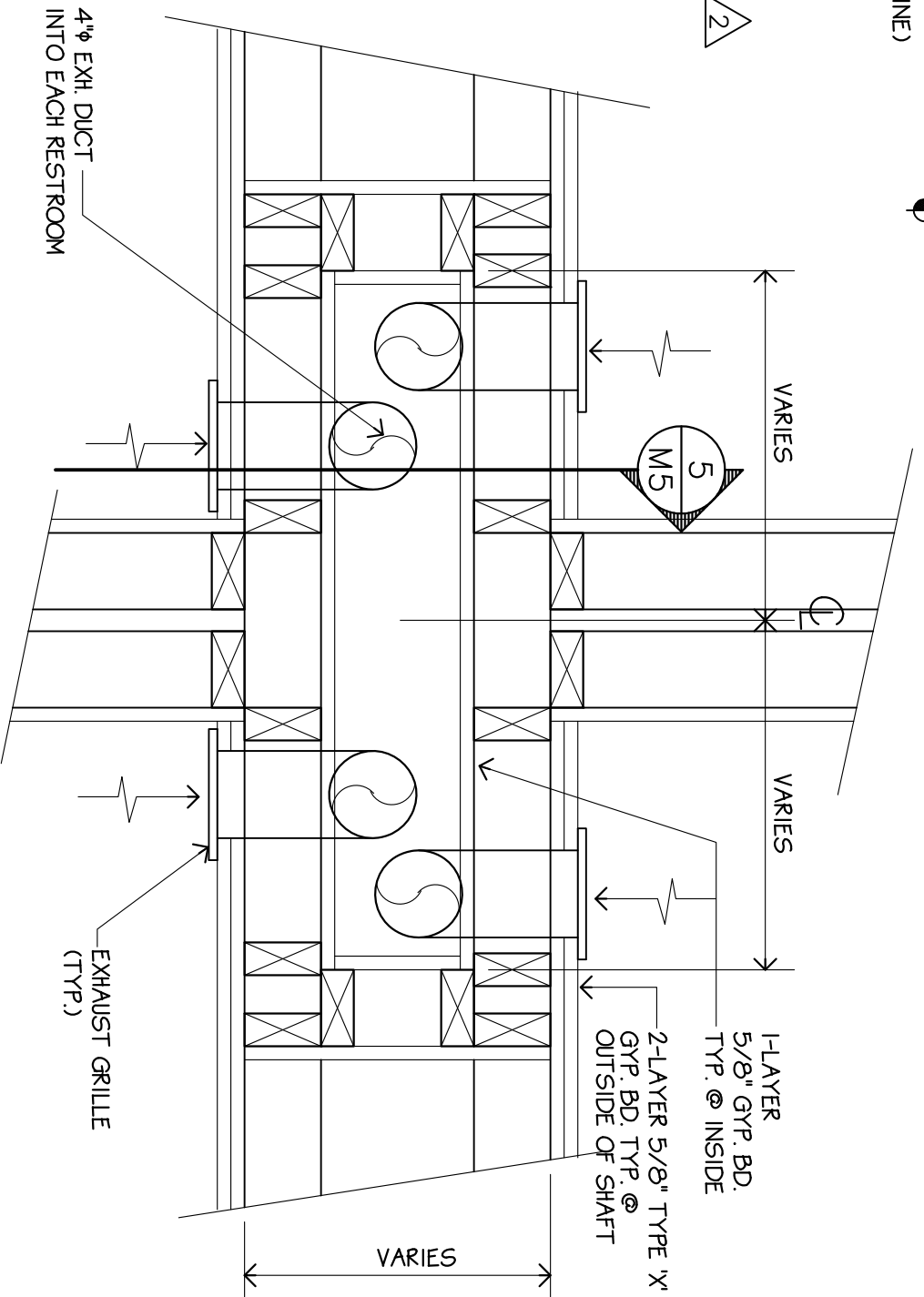
1 NOT USED

M5



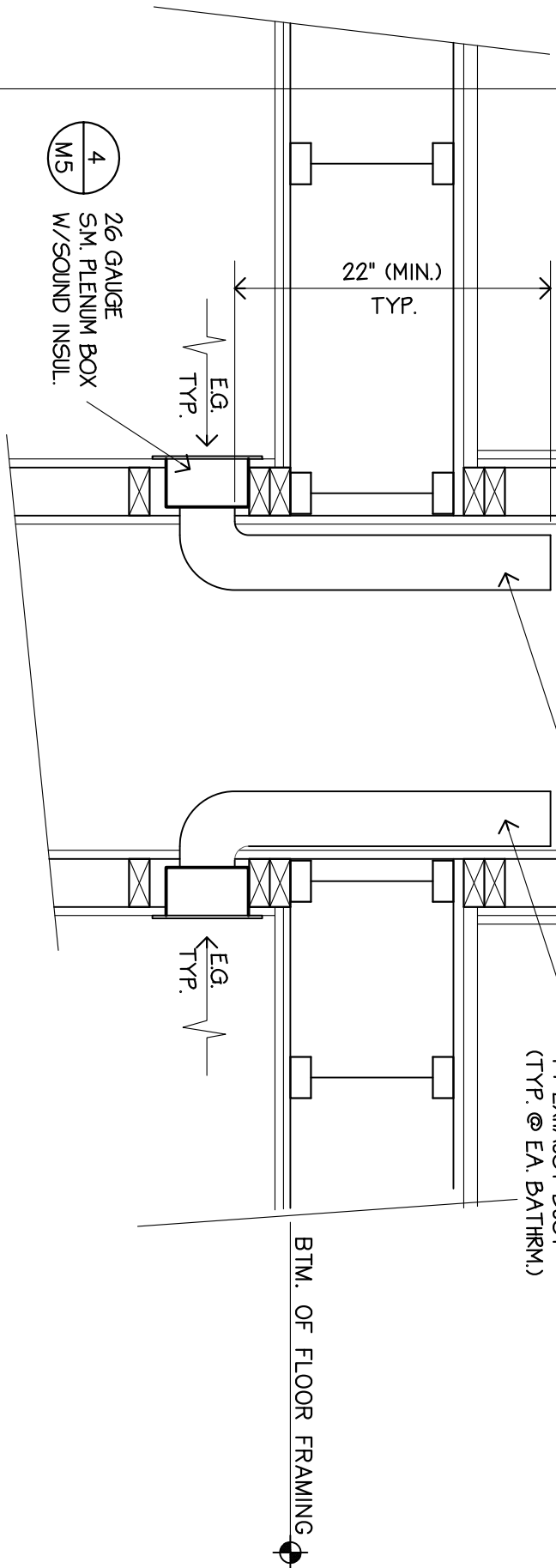
2 TWO-HOUR DUCT CHASE

M5 SCALE: 1 1/2"=1'-0"



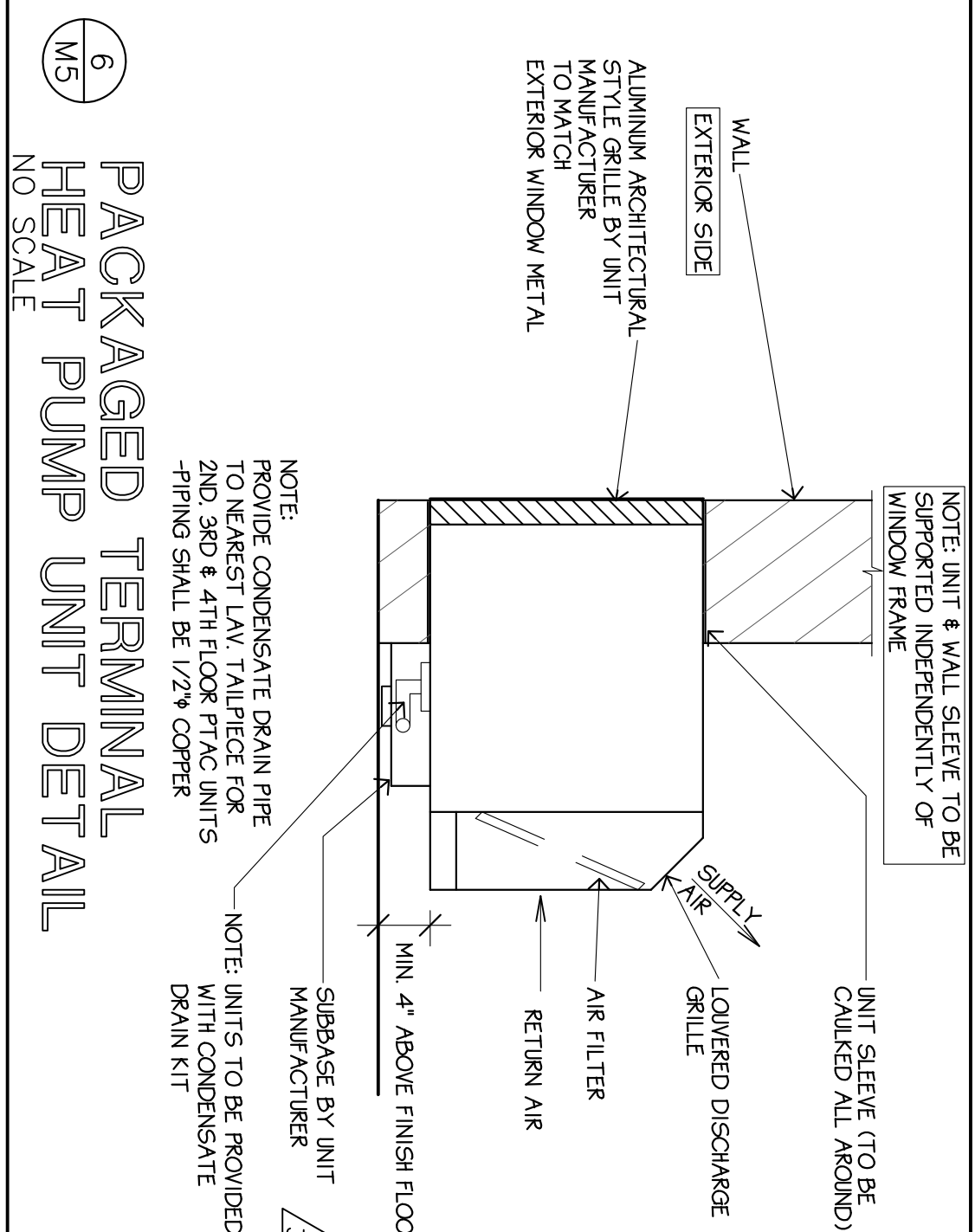
3 TWO-HOUR EXH. DUCT CHASE

M5 SCALE: 1 1/2"=1'-0"



5 SECTION THRU SHAFT

M5 SCALE: 1"=1'-0"



6 PACKAGED TERMINAL HEAT PUMP UNIT DETAIL

M5 NO SCALE

MECHANICAL EQUIPMENT LIST

HP-1	DAY & NIGHT MODEL NO. 6610048 PAD MTD. HEAT PUMP 208/230v. 3ø 19.0 AMPS 46000 BTU COOLING/47000 BTU HEATING
HP-2	DAY & NIGHT NO. 6610036 PAD MTD. HEAT PUMP 208/230v. 3ø 15.7 AMPS 34,200 BTU COOLING/6000 BTU HEATING (2000 CFM)
FCU-1	DAY & NIGHT FPAANF048 FAN COIL UNIT (VERTICAL) 208/230v. 1ø 1700 CFM 3/4 HP 5.5 AMPS
FCU-2	DAY & NIGHT FPAANF036 FAN COIL UNIT (VERTICAL) 208/230v. 1ø 1300 CFM 3/4 HP 1/3HP. 3.2 AMPS.
WI-1	AMANA PTH073A PACKAGE TERMINAL HEAT PUMP UNIT (IN WALL) W/ 2.5 KW HEAT STRIP (SUPPLEMENT) 208/230v. 1ø 3.0AMPS (7,400 BTU COOLING/ 6,500 BTU HEATING)
WI-2	AMANA PTH09A PACKAGE TERMINAL HEAT PUMP UNIT (IN WALL) W/ 2.5 KW HEAT STRIP (SUPPLEMENT) 208/230v. 1ø 4.9AMPS (9,000 BTU COOLING/ 8,500 BTU HEATING)
WI-3	AMANA PTH12A PACKAGE TERMINAL HEAT PUMP UNIT (IN WALL) 208/230v. 1ø 6.4AMPS (12,000 BTU COOLING/ 11,200 BTU HEATING) W/ 3.5 KW HEAT STRIP (SUPPLEMENT)
WI-4	AMANA PTH15A PACKAGE TERMINAL HEAT PUMP UNIT (IN WALL) 208/230v. 1ø 8.4AMPS (14,000 BTU COOLING/ 13,700 BTU HEATING) W/ 3.5 KW HEAT STRIP (SUPPLEMENT)
EF-1	DAYTON MODEL 20913 ROOF MOUNTED EXHAUST FAN W/ CURB 6648 CFM @ .375" STATIC PRESSURE. 1/10 HP
EF-2	BROWN MODEL 671 CEILING/WALL EXHAUST FAN 70 CFM, 3.0 SONES, 1.2 AMPS
EF-3	BROWN MODEL 362 CEILING EXHAUST FAN 200 CFM, 2.0 SONES, 1.3 AMPS
EF-4	BROWN MODEL 675 CEILING EXHAUST FAN 750 CFM, 8.3 SONES, 3.8 AMPS TOCH (VARIABLE)
EF-5	BROWN MODEL 684 CEILING EXHAUST FAN 80 CFM, 2.5 SONES
EF-6	FANTECH MODEL PX10 EXHAUST FAN (LINE CENTRIFUGAL FAN) 521 CFM @ .5" STATIC PRESSURE, 4.6 SONES, 2.0 AMP

AIR DISTRIBUTION DEVICES

LSO	LINEAR SLOT DIFFUSER, CONSTRUCTED OF EXTRUDED ALUMINUM PATTERN WITH AIR PATTERN CONTROLLER ADJUSTABLE FOR 180 DEG. AIR DIRECTION. EACH AIR SLOT SHALL BE EQUIPPED WITH AN INDIVIDUALLY ADJUSTABLE VOLUME DAMPER.
CO	CEILING DIFFUSER, 4 WAY ADJUSTABLE, AIR PATTERN, PROVIDE W/POPOSE BLADE DAMPER VOLUME DAMPER CONSTRUCTED OF EXTRUDED ALUMINUM, AND OF COLORS SELECTED BY ARCHITECT.
CSR	CEILING SUPPLY REGISTER SHALL BE TWO WAY PATTERN WITH INDIVIDUALLY ADJUSTABLE CURVED BLADES, CONSTRUCTED OF EXTRUDED ALUMINUM.
SR	SUPPLY REGISTER SHALL BE ONE WAY PATTERN WITH INDIVIDUALLY ADJUSTABLE CURVED BLADES, CONSTRUCTED OF EXTRUDED ALUMINUM.
RR	RETURN/EXHAUST REGISTER, (CEILING - 0° DEFLECTION; WALL FIXED 45° CURVED DEFLECTION VANES) MANUFACTURED OF CORROSION RESISTANCE ALUMINUM.

EQUIPMENT LIST NOTES:

- EQUIPMENT CAPACITIES FOR HVAC ITEMS LISTED SHALL BE DETERMINED BASED ON LOCATION OF HOTEL AND DESIGN CRITERIA AS SHOWN ON THIS DRAWING.
- FINAL SELECTION OF ELECTRICAL CHARACTERISTICS FOR EQUIPMENT SHALL BE DETERMINED BASED ON SITE VOLTAGE, AVAILABILITY.
- GUEST ROOM PACKAGED TERMINAL HEAT PUMP UNITS SHALL HAVE THERMOSTATIC CONTROLS WITH SETPOINTS IN DEGREE FAHRENHEIT OR CELSIUS NEXT TO THE CONTROLS WHICH CLEARLY EXPLAINS THE RELATIONSHIP OF THE CONTROL SETTING TO THE DEGREE FAHRENHEIT - EITHER METHOD CONFORMS THE STATE OF CALIFORNIA, TITLE 24, PART 6, SECTION 122(C).
- GENERAL CONTRACTOR TO FURNISH 2 EXTRA WI-1 PTHAC UNITS.

SYMBOL AND ABBREVIATION

— EXH —	EXHAUST AIR DUCT
— SA —	SUPPLY AIR DUCT
— RA —	RETURN AIR DUCT
① OR ②	NOTE NUMBER/LETTER
☑	SUPPLY AIR CEILING DIFFUSER
☑	RETURN AIR CEILING REGISTER
☑	EXHAUST AIR CEILING REGISTER WITH FAN
⌊	LINEAR SLOT DIFFUSER
☑	SUPPLY AIR DUCT UP
☑	RETURN/EXHAUST AIR DUCT UP
☑	AIR COOLED CONDENSING UNIT
AHU	AIR HANDLING UNIT
CLG.	CEILING
FD	FIRE DAMPER
EF	EXHAUST FAN
TG	TRANSFER GRILLE
RR	RETURN REGISTER
UC	UNDER CUT
O.A.	OUTSIDE AIR
L.D.	LOUVERED DOOR
S.A	SUPPLY AIR
R.A.	RETURN AIR
①	REH. THERMOSTAT
②	HUMIDISTAT
EG	EXHAUST GRILLE

REVISIONS PER CITY OF SOUTH SAN FRANCISCO 3/11/98

REVISIONS PER CLARIFICATION W/ CONTRACTOR 12/30/98

THESE DRAWINGS, DESIGNS, SKETCHES, IDEAS & ARRANGEMENTS ARE THE SOLE & EXCLUSIVE PROPERTY OF LEE GAGE & ASSOCIATES, AND WERE CREATED BY AND FOR THE ARCHITECTS EXCLUSIVE USE ON, AND IN CONJUNCTION WITH THE ARCHITECT'S WORK. NOTHING CONTAINED OR REPRESENTED ON THESE DOCUMENTS SHALL BE USED BY OR DISCLOSED TO ANY PERSON, FIRM OR CORPORATION FOR ANY PURPOSE, WITHOUT EXPRESSED WRITTEN CONSENT OF LEE GAGE & ASSOCIATES.

lee gage & associates architects • engineers • planners

7636 n. ingram suite 107 fresno, california 93711 phone (209) 439-2222

PROPOSED:
HAMPTON INN
CORPORATE DRIVE
SOUTH SAN FRANCISCO, CA.

by date

drawn

checked

revised

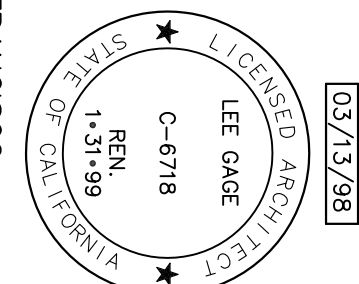
project no.

REVISIONS PER CITY OF SOUTH SAN FRANCISCO 2/5/98

LEE GAGE C-6718

Sheet SET NO.

M5



C:\SDSKPROJ\9\9\9\9\DWG\SFO-M5.DWG