

THESE DRAWINGS, DESIGNS, SKETCHES, IDEAS & ARRANGEMENTS ARE THE SOLE & EXCLUSIVE PROPERTY OF LEE GAGE & ASSOCIATES, AND NO PART HEREOF IS TO BE REPRODUCED OR REPRESENTED ON THESE DOCUMENTS WITHOUT THE ARCHITECT'S WORK. NOTHING CONTAINED HEREIN IS TO BE USED BY OR DISCLOSED TO ANY PERSON, FIRM OR CORPORATION FOR ANY PURPOSE WITHOUT EXPRESSED WRITTEN CONSENT OF LEE GAGE & ASSOCIATES.

PROPOSED:  
HAMPTON INN  
CORPORATE DRIVE  
SOUTH SAN FRANCISCO, CA.

by 08/24/99 date  
drawn  
checked  
revised  
revised  
project no.  
sheet  
MSR  
SET NO.

MECHANICAL EQUIPMENT LIST

AC-1 DAY & NIGHT NO. 5800P48115C ROOF MTD. PACKAGED AIR CONDITIONER  
208/230v. 3ø 29.9 AMPS (2100 CM TOTL/AL, 1300 CM TO CORRIDOR)  
W-2 AMANA PT109A PACKAGE TERMINAL HEAT PUMP UNIT (IN WALL) W/ 2.5 KW HEAT STRIP (SUPPLEMENT)  
208/230v. 1ø 4.9AMPS (3,000 BTU COOLING/ 8,500 BTU HEATING)

AIR DISTRIBUTION DEVICES

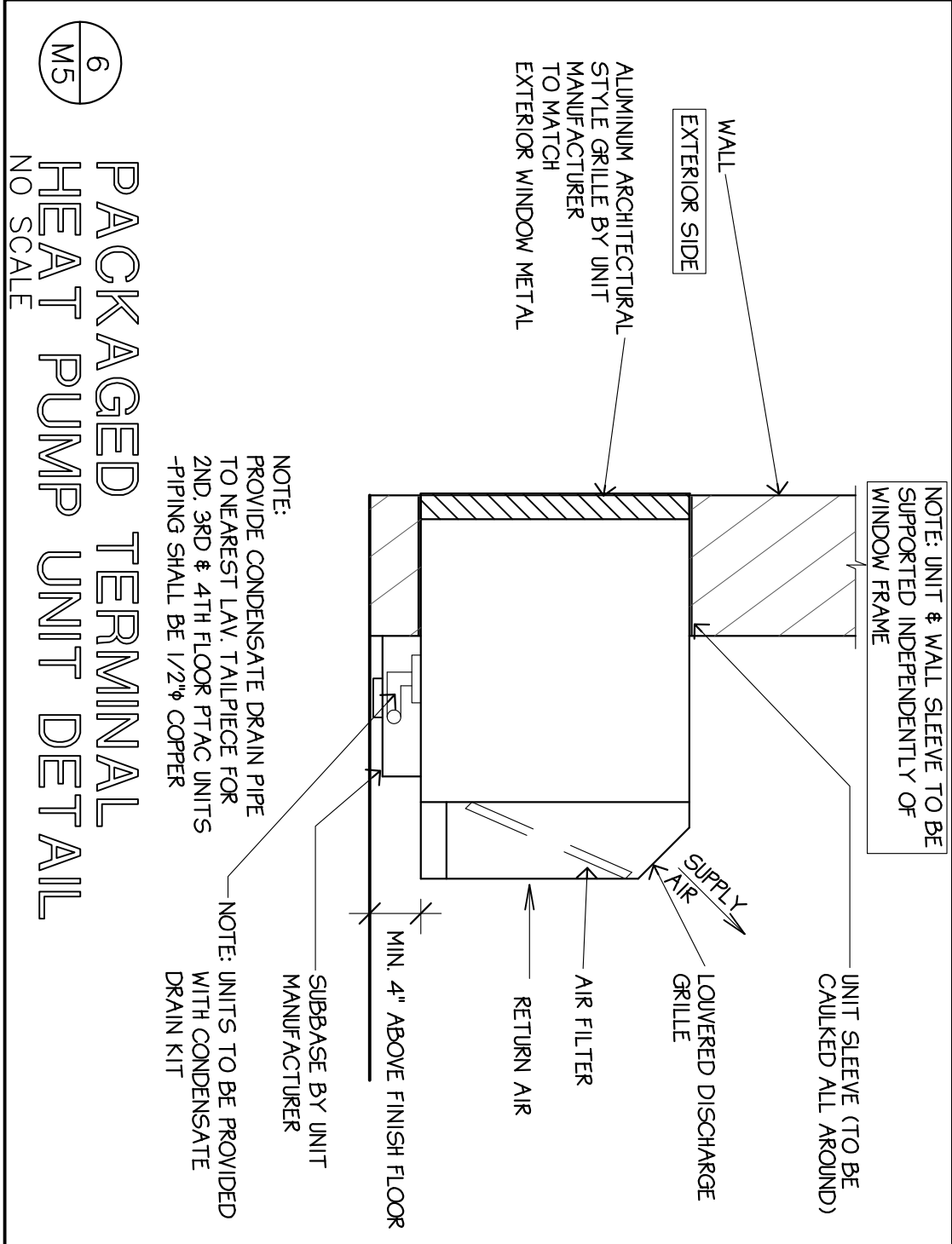
LSD LINEAR SLOT DIFFUSER, CONSTRUCTED OF EXTRUDED ALUMINUM PATTERN. EACH AIR SLOT SHALL BE EQUIPPED WITH AN INDIVIDUALLY ADJUSTABLE VOLUME DAMPER.  
CD CEILING DIFFUSER: 4 WAY ADJUSTABLE AIR PATTERN. PROVIDE W/POPE BLADE DAMPER VOLUME DAMPER CONSTRUCTED OF EXTRUDED ALUMINUM, AND OF COLORS SELECTED BY ARCHITECT.  
CSR CEILING SUPPLY REGISTER SHALL BE TWO WAY PATTERN WITH INDIVIDUALLY ADJUSTABLE CURVED BLADES, CONSTRUCTED OF EXTRUDED ALUMINUM.  
SR SUPPLY REGISTER SHALL BE ONE WAY PATTERN WITH INDIVIDUALLY ADJUSTABLE CURVED BLADES, CONSTRUCTED OF EXTRUDED ALUMINUM.  
RR RETURN/EXHAUST REGISTER (CEILING - 0° DEFLECTION; WALL FIXED 45° CURVED DEFLECTION VANES) MANUFACTURED OF CORROSION RESISTANCE ALUMINUM.

EQUIPMENT LIST NOTES:

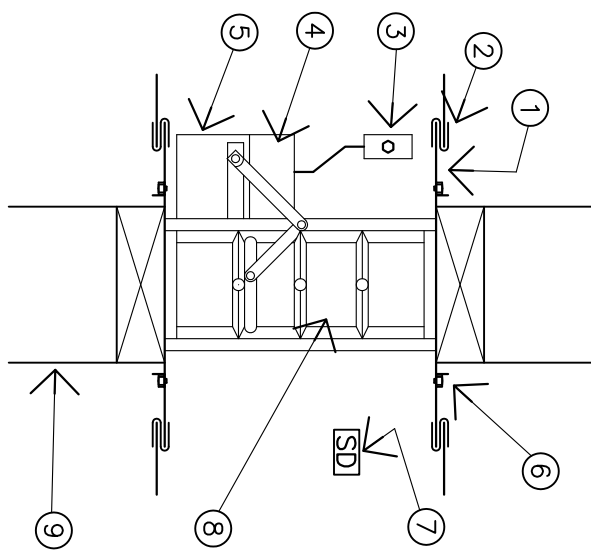
- EQUIPMENT CAPACITIES FOR HVAC ITEMS LISTED SHALL BE BE DETERMINED BASED ON LOCATION OF HOTEL AND DESIGN CRITERIA AS SHOWN ON THIS DRAWING.
- FINAL SELECTION OF ELECTRICAL CHARACTERISTICS FOR EQUIPMENT SHALL BE DETERMINED BASED ON SITE VOLTAGE AVAILABILITY.
- GUEST ROOM PACKAGED TERMINAL HEAT PUMP UNITS SHALL HAVE THERMOSTATIC CONTROLS WITH SETPOINTS IN DEGREE FAHRENHEIT SHALL BEAR OR LABEL NEXT TO THE CONTROLS WHICH CLEARLY EXPLAINS THE RELATIONSHIP OF THE CONTROL SETTING TO THE DEGREE FAHRENHEIT - EITHER METHOD CONFORMS THE STATE OF CALIFORNIA, TITLE 24, PART 6, SECTION 122(6).
- GENERAL CONTRACTOR TO FURNISH 2 EXTRA WU-1 PTAC UNITS.

SYMBOL AND ABBREVIATION

— EXH — EXHAUST AIR DUCT  
— SA — SUPPLY AIR DUCT  
— RA — RETURN AIR DUCT  
① OR ② NOTE NUMBER/LETTER  
— SUPPLY AIR CEILING DIFFUSER  
— RETURN AIR CEILING REGISTER  
— EXHAUST AIR CEILING REGISTER WITH FAN  
— LINEAR SLOT DIFFUSER  
☑ SUPPLY AIR DUCT UP  
☑ RETURN/EXHAUST AIR DUCT UP  
AHU HVAC UNIT  
CLG. AIR HANDLING UNIT  
FD CEILING  
FD FIRE DAMPER  
EF EXHAUST FAN  
TG TRANSFER GRILLE  
RR RETURN REGISTER  
UC UNDER CUT  
O.A. OUTSIDE AIR  
L.D. LOUVERED DOOR  
S.A. SUPPLY AIR  
R.A. RETURN AIR  
① THERMOSTAT  
② HUMIDISTAT  
EG EXHAUST GRILLE

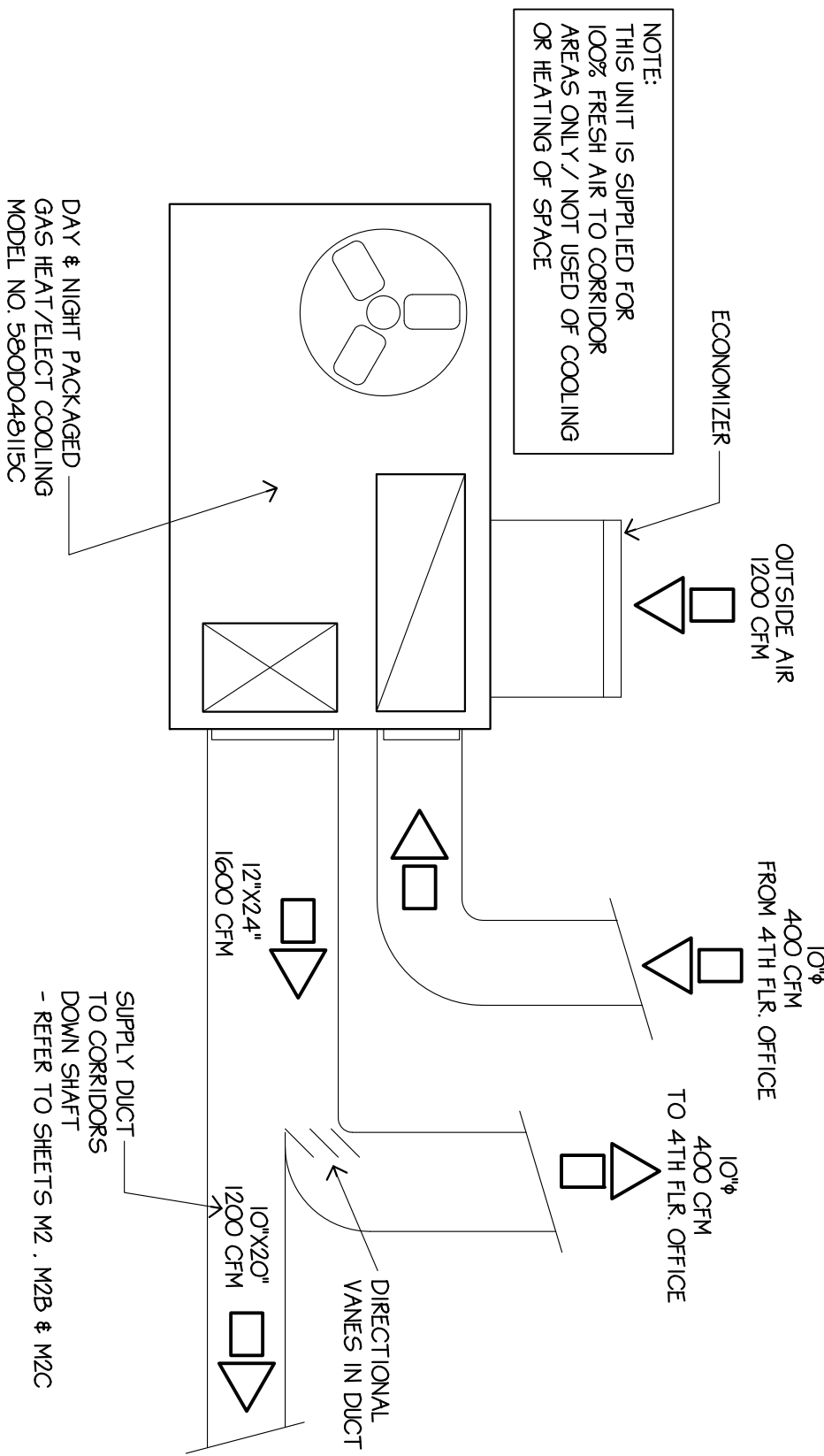


RD. DAMPER CSFM LISTING NO. 3925-225, 107 & 108  
SQ. DAMPER CSFM LISTING NO. 3925-245, 005 & 109



- NOTES:
- FIRE DAMPER & INSTALLATION TO BE IN ACCORDANCE WITH CALIFORNIA STATE FIRE MARSHALL LISTING #3225.
  - FIRE DAMPER SHALL BE STATE FIRE MARSHALL APPROVED & INSTALLED STRICTLY PER MFG'S PRINTED INSTRUCTIONS.
  - MANUFACTURER'S INSTALLATION INSTRUCTIONS SHALL BE MADE AVAILBLE TO THE INSPECTING AUTHORITIES.
  - UNIT SHALL BE INSTALLED IN ACCORDANCE WITH THE MANUFACTURER'S INSTRUCTIONS.
  - DUCT SMOKE SELECTOR SHALL BE FURNISHED AND INSTALLED BY ELECTRICAL CONTRACTOR.
  - FIRE DAMPER DETAIL FOR REFERENCE ONLY.

3 COMBINATION FIRE/SMOKE DAMPER (WALL INSTALLATION)  
M5R SCALE: NONE



OUTSIDE AIR CALCULATION

1,500 S.F. CORRIDOR  
X 8 FT. CEILING  
= 12,000 CU. FT.  
X 3 CORRIDORS  
= 36,000 CU. FT. (TOTAL)  
X 2 AIR CHANGES/HR.  
= 72,000 CFM / 60 MIN. = 1,200 CFM  
USE 1,000 CFM  
NOTE: PROVIDE PTAC UNITS AT END OF CORRIDOR WITH CONTINUOUSLY OPENED DAMPERS FOR FRESH AIR RELIEF

1 FRESH AIR UNIT DETAIL  
M5R SCALE: NONE

