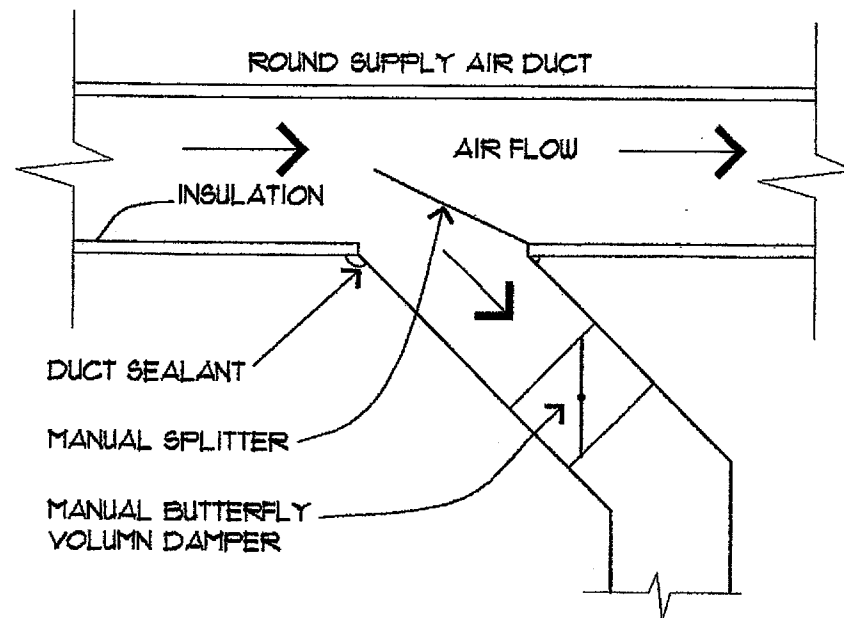
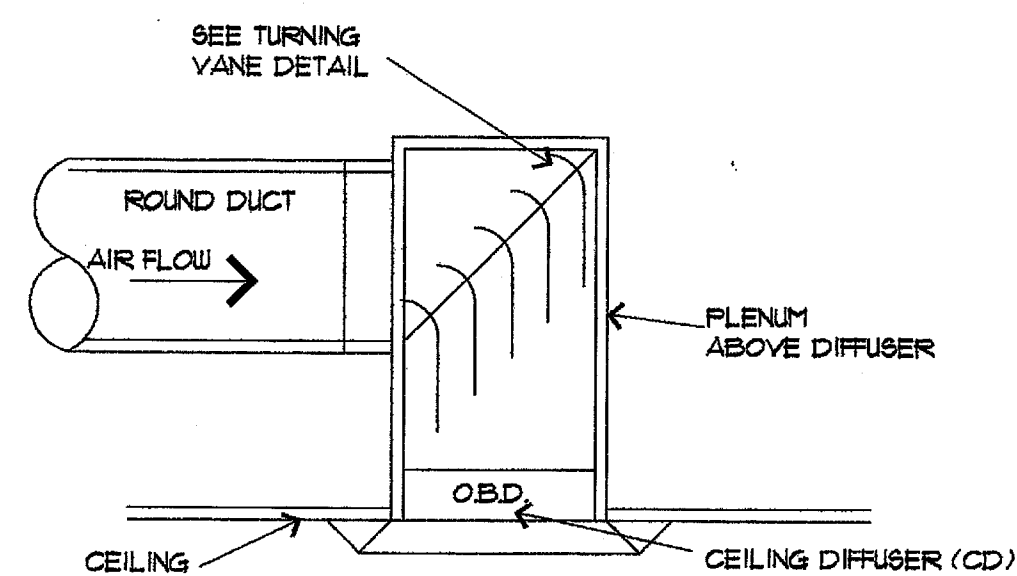


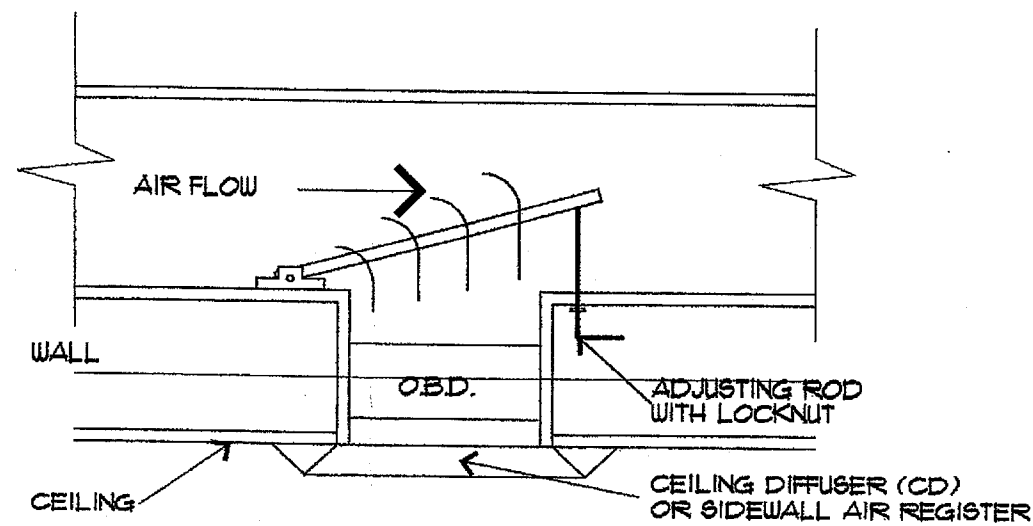
1 RECT. TO ROUND DUCT TAKEOFF
NO SCALE



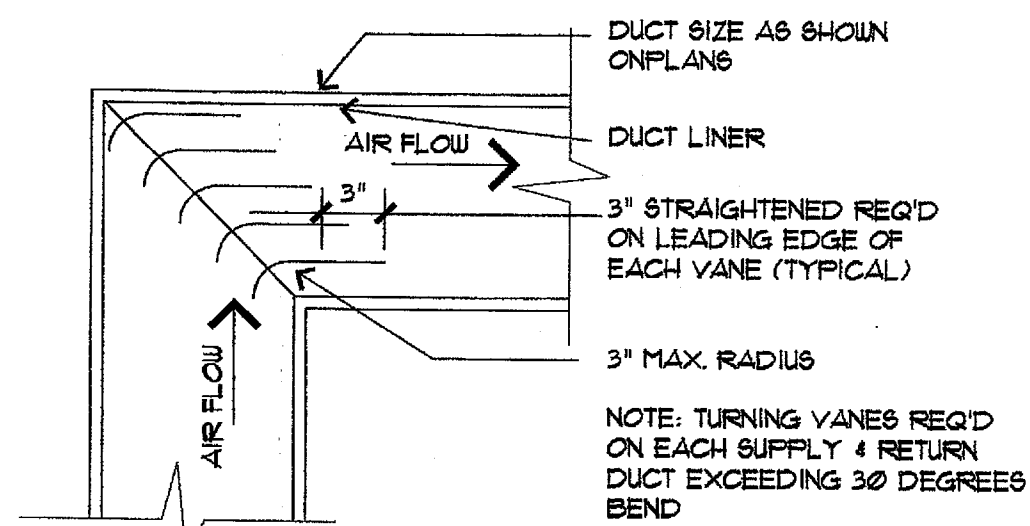
4 ROUND TO ROUND DUCT TAKEOFF
NO SCALE



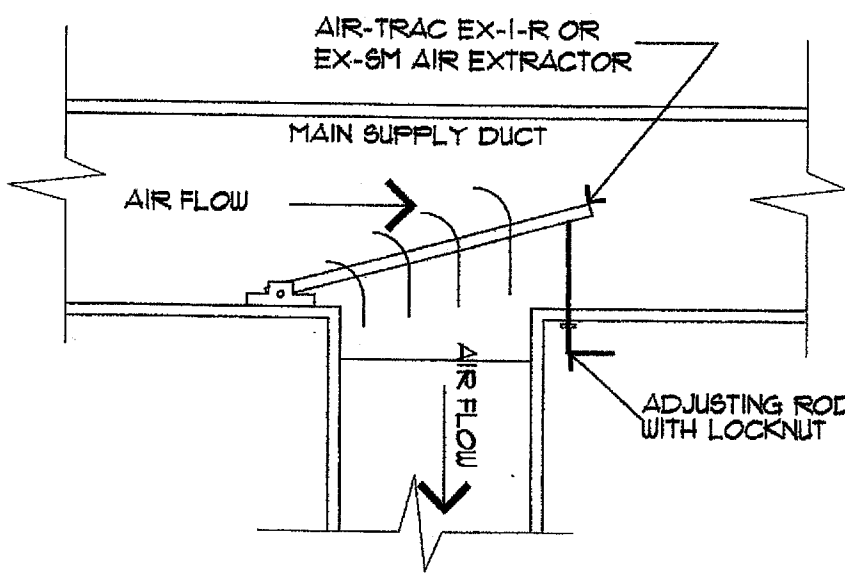
7 DIFFUSER WITH ROUND DUCT
NO SCALE



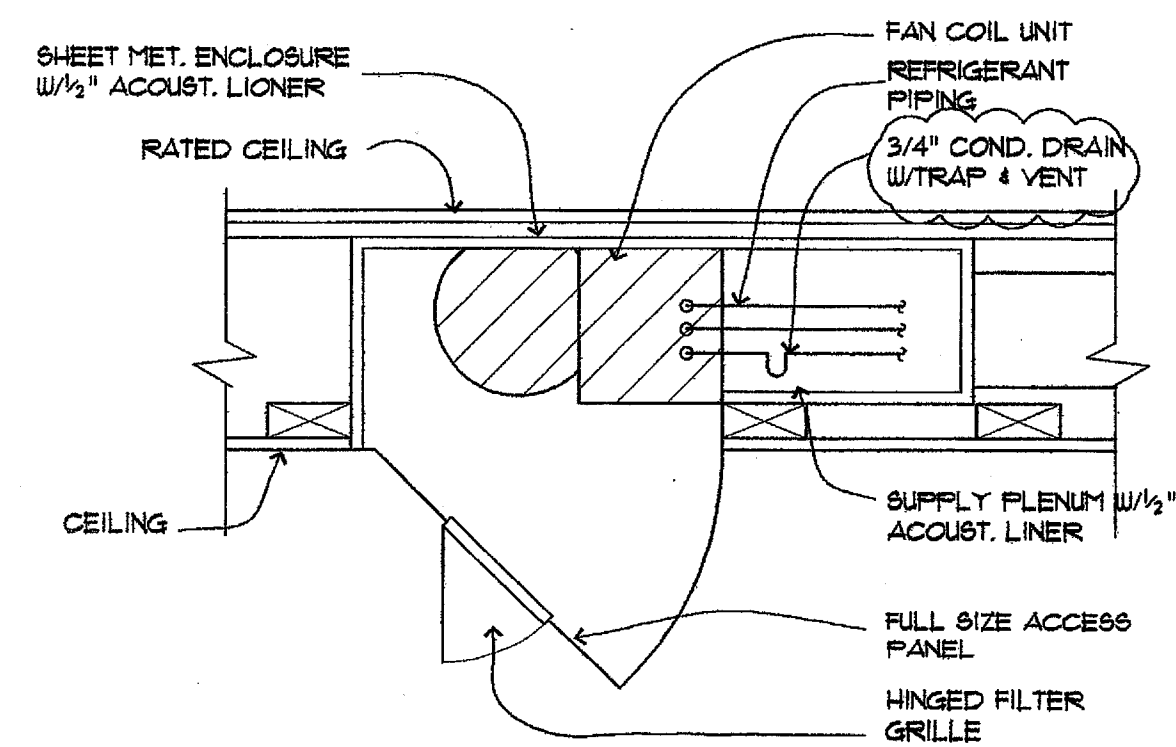
4 DIFFUSER ON DUCT RUN
NO SCALE



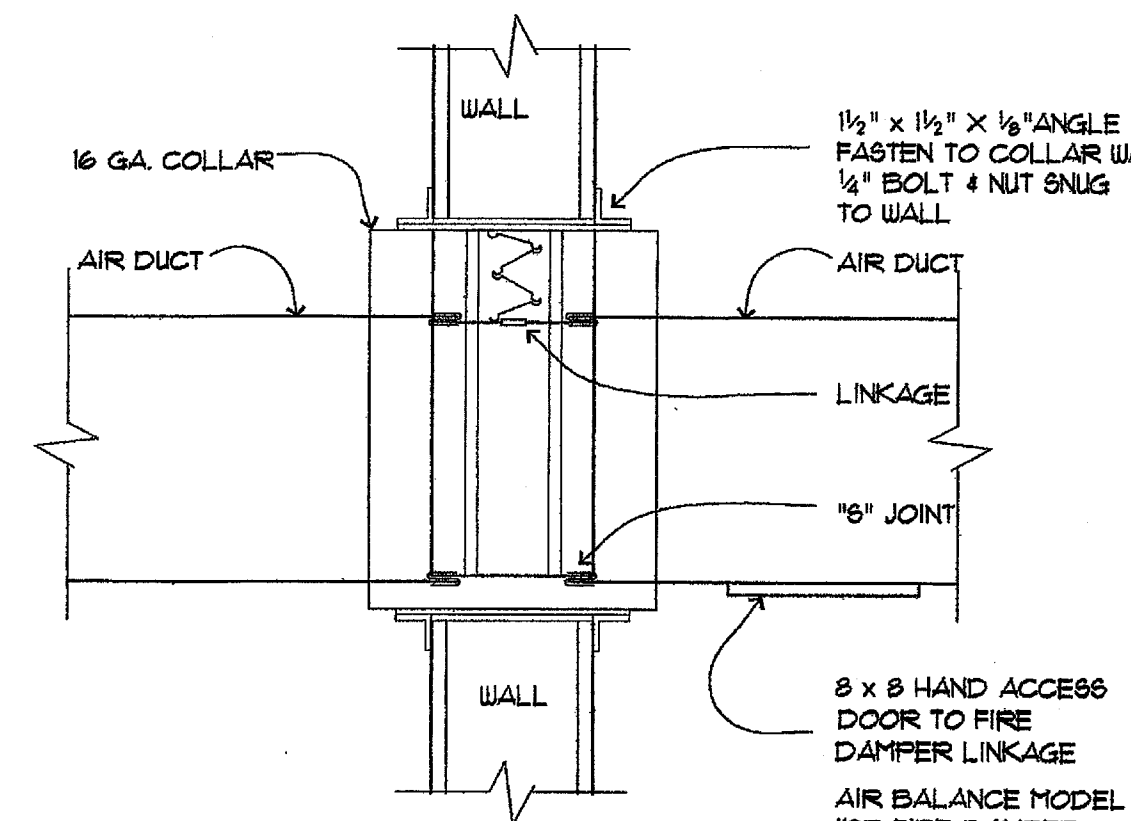
5 TURNING VANE DETAIL
NO SCALE



8 BRANCH DUCT TAKEOFF
NO SCALE



3 FAN COIL MOUNTING DETAIL
NO SCALE



6 FIRE DAMPER THRU WALL DETAIL
NO SCALE

NOTES:

1. GENERAL
 - A. WORK SHALL BE IN ACCORDANCE WITH GOVERNING CODES AND ORDINANCES.
 - B. VERIFY ELECTRICAL REQUIREMENTS WITH ELECTRICAL CONTRACTOR.
 - C. PRIOR TO INSTALLATION OF THE WORK, CONFER WITH G.C. CONCERNING REVISIONS, IF ANY, NOT INDICATED ON THE "M" SHEETS THAT MAY AFFECT IT.
2. DUCTWORK AND OUTLETS:
 - A. SHEET METAL DUCTWORK SHALL BE IN ACCORDANCE WITH "SMACNA" LOW PRESSURE DUCT CONSTRUCTION STANDARDS.
 - B. ALL RECTANGULAR SUPPLY DUCTS SHALL BE INSULATED WITH 1/2", 1 1/2" DENSITY INTERNAL LINER. DUCT DIMENSIONS DO NOT INCLUDE INSULATION ALLOWANCE.
 - C. ALL ROUND DUCTS SHALL BE INSULATED WITH 1/2" MIN. EXTERNAL FOIL-BACKED BLANKET.
 - D. COORDINATE LOCATION OF SUPPLY AND RETURN AIR OUTLETS WITH LIGHTING AND CEILING PATTERNS.
 - E. REGISTERS, DIFFUSERS AND GRILLES SHALL BE KEHLER OR EQUAL.
3. SPLIT SYSTEMS:
 - A. FLOOR MOUNTED FAN COIL UNITS SHALL BE SUPPORTED ON RAISED FLOOR CONSTRUCTED BY G.C. CEILING MOUNTED UNITS SHALL BE SUPPORTED FROM THE BUILDING STRUCTURE.
 - B. PROVIDE 3/4" TRAPPED CONDENSATE DRAIN AT EACH FC UNIT TO DRAIN BY PLUMBER. COORDINATE WITH PLUMBER.
 - C. PROVIDE REFRIGERANT PIPING VIA WALLS AND FURRED CEILINGS FROM CONDENSING UNITS TO FC UNITS SIZED AND INSTALLED PER MFR'S RECOMMENDATIONS.

MECHANICAL EQUIPMENT SCHEDULE

H & A/C SYSTEMS SHALL BE CARRIER, TRANE, OR EQUAL CONSISTING OF FAN COIL UNITS W/ ELECTRIC HEAT AND AIR COOLED CONDENSING UNITS. SYSTEMS SHALL BE PROVIDED WALL OPERATING & SAFETY CONTROLS AND SHALL BE PROVIDED W/ ACCESSORY THERMOSTATS HAVING HEAT/COOL AUTO CHANGE OVER CONTROL AND FAN SUBBASE. 2 STAGE HEATING REQUIRED WITH 2 STAGE ELEC. HEAT. PROVIDE W/ LOCKING COVERS. ALL COIL UNITS 2000 CFM AND GREATER OR SERVING ENTRY CORRIDORS SHALL BE PROVIDED W/ R.A. SMOKE DETECTOR FOR SYSTEM SHUT DOWN PER NFPA. REFRIGERANT PIPING SHALL BE SIZED AND INSTALLED IN ACCORD W/ MFR. RECOMMENDATIONS AND CONCEALED WITHIN WALLS AND ABOVE CEILINGS WHERE POSSIBLE. ALL INSTALLATIONS SHALL CONFORM W/ GOVERNING CODES & REGULATIONS. PROVIDE CONDENSATE DRAINS W/ TRAPS TO DRAIN OPENING BY PLUMBING CONTR.

SYSTEM NO. 1 FAN COIL UNIT NO. 1 AIR COOLED CONDENSING UNIT NO. 1 NOMINAL 4 TONS COOLING CAPACITY @ ARI. CONDITIONS W/ 1/2 KW 2 STAGE ELEC. HEAT 200/3 1600 CFM EVAP. FAN MOTOR @ 1/3 H.P. CONDENSING UNIT @ 20 M.C.A. @ 200/3

SYSTEM NO. 2 FAN COIL UNIT NO. 2 AIR COOLED CONDENSING UNIT NO. 2 NOMINAL 4 TONS COOLING CAPACITY @ ARI. CONDITIONS W/ 1/2 KW 2 STAGE ELEC. HEAT 200/3 1600 CFM EVAP. FAN MOTOR @ 1/3 H.P. CONDENSING UNIT @ 20 M.C.A. @ 200/3

SYSTEM NO. 3 FAN COIL UNIT NO. 3 AIR COOLED CONDENSING UNIT NO. 3 NOMINAL 3 TONS COOLING CAPACITY @ ARI. CONDITIONS W/ 1/2 KW 2 STAGE ELEC. HEAT 200/3 1600 CFM EVAP. FAN MOTOR @ 1/3 H.P. CONDENSING UNIT @ 20 M.C.A. @ 200/3

SYSTEM NO. 4 FAN COIL UNIT NO. 4 AIR COOLED CONDENSING UNIT NO. 4 NOMINAL 1 1/2 TONS COOLING CAPACITY @ ARI. CONDITIONS W/ 3 KW ELEC. HEAT 600 CFM EVAP. FAN MOTOR @ 1/3 H.P. CONDENSING UNIT @ 11 M.C.A. @ 200/1

SYSTEM NO. 5 FAN COIL UNIT NO. 5 AIR COOLED CONDENSING UNIT NO. 5 NOMINAL 1 1/2 TONS COOLING CAPACITY @ ARI. CONDITIONS W/ 3 KW ELEC. HEAT 600 CFM EVAP. FAN MOTOR @ 1/3 H.P. CONDENSING UNIT @ 11 M.C.A. @ 200/1

SYSTEM NO. 6 & 7 FAN COIL UNIT NO. 6 & 7 AIR COOLED CONDENSING UNIT NO. 6 & 7 NOMINAL 1 1/2 TONS COOLING CAPACITY @ ARI. CONDITIONS W/ 5 KW 2 STAGE ELEC. HEAT 200/3 800 CFM EVAP. FAN MOTOR @ 1/3 H.P. CONDENSING UNIT @ 15 M.C.A. @ 200/3

INDIVIDUAL ROOM TYPE H & A/C UNITS (PTAC) GE ZONELINE W/ 3 KW ELEC. HEAT W/ UNIT SUBBASE W/ ELEC. D/5/ 200/1. NOMINAL 12,000 BTU/HR COOL CAPACITY PROVIDE W/ EXTERNAL DRAIN ACCESSORY.

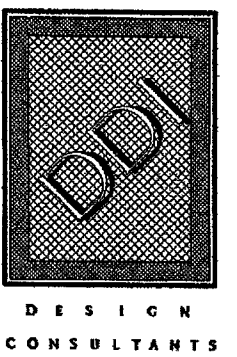
INDIVIDUAL CORRIDOR H & A/C UNITS (PTAC) GE ZONELINE W/ 3 KW ELEC. HEAT W/ UNIT SUBBASE W/ ELEC. D/5/ 200/1. NOMINAL 18,000 BTU/HR COOL CAPACITY. PROVIDE W/ EXTERNAL DRAIN ACCESSORY.

ELECTRIC WALL HEATER : MARKEL OR EQUAL W/ 3 KW ELECTRIC HEAT W/ INTEGRAL THERMOSTAT.

EW-1 SURFACE MOUNTED
EW-2 RECESSED

EXHAUST FANS - GREENHECK OR EQUAL ALUMINUM CENTRIFUGAL EXHAUSTERS IN-LINE UNITS AS INDICATED. NOMINAL 140 RPM 120V. PROVIDE W/ BACK DRAFT DAMPER, BIRDS SCREEN, DISC. SWITCH.

TYPICAL GUEST BATH COMBINATION EXHAUST FAN/LIGHT UNIT:
BROAN No. 4C318, 50 CFM - 25 SONES, 120V



Richard Molenaar
ARCHITECT

PROJECT NAME:

Holiday Inn Express
HOTEL & SUITES
Underwood Road
Vicksburg, MS 38671

SHEET TITLE:

PROJECT NO.
01005

LATEST REVISION:

DRAWN BY:

CHECKED BY:

SHEET NUMBER:

DATE:
2/23/02

M4