



ARCHITECTS

803 S. MOUNT MORRIS

SUITE 1008

MEMPHIS, TN 38117

(901) 525-7193

(901) 525-7193

info@warchitects.com

NO. ISSUED DATE

1 ISSUED 10/26/07

NO.	REVISION	DATE

CONSULTANTS

STRUCTURAL

MECHANICAL

CRABTREE ENGINEERING

743 S. MOUNT MORRIS

MEMPHIS, TN 38117

(901) 727-4888

PLUMBING

CRABTREE ENGINEERING

743 S. MOUNT MORRIS

MEMPHIS, TN 38117

(901) 727-4888

ELECTRICAL

CRABTREE ENGINEERING

743 S. MOUNT MORRIS

MEMPHIS, TN 38117

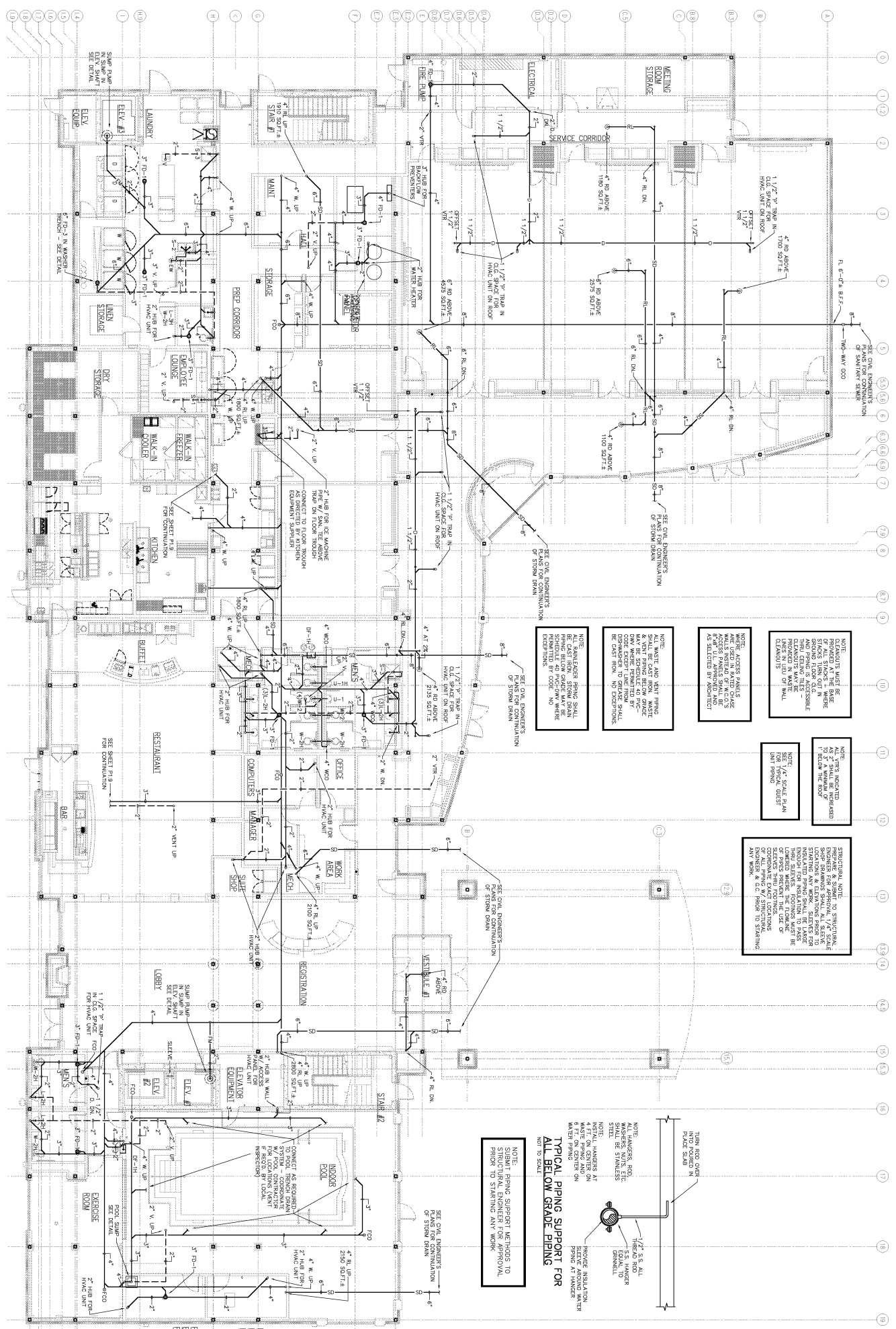
(901) 727-4888



Hedberg Group
BOSSIER CITY,
LOUISIANA

SHEET NAME
GROUND FLOOR
PLAN - WASTE
AND VENT

DATE 10/26/07
DRAWN BY JH
CHECKED BY PL
FILE NAME 1507P1-1
SCALE AS NOTED
PROJECT NO. 1507



GROUND FLOOR PLAN - WASTE AND VENT

P1.1



ARCHITECTS

803 S. MOUNT MORIAH

SUITE 100B

MEMPHIS, TN 38117

(901) 553-2544

info@lwaarchitects.com

NO. ISSUED DATE

1 ISSUED 10/26/07

NO. REVISIONS DATE

CONFORMS TO ALL APPLICABLE CODES AND REGULATIONS. THE CONSULTANT'S LIABILITY IS LIMITED TO THE DESIGN PROFESSION.

CONSULTANTS

MECHANICAL:

CRUICKSHANK ENGINEERING

725 S. MOUNT MORIAH

MEMPHIS, TN 38117

(901) 767-4888

PLUMBING:

CRUICKSHANK ENGINEERING

725 S. MOUNT MORIAH

MEMPHIS, TN 38117

(901) 767-4888

ELECTRICAL:

CRUICKSHANK ENGINEERING

725 S. MOUNT MORIAH

MEMPHIS, TN 38117

(901) 767-4888

SEAL



#Holding Firm

BOSSIER CITY,

LOUISIANA

SHEET NAME

SECOND FLOOR

PLAN - PLUMBING

DATE

10/26/07

DRAWN BY

JH

CHECKED BY

PL

FILE NAME

1507P1-3

SCALE

AS NOTED

PROJECT NO.

1507

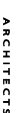
DRAWING

SECOND FLOOR PLAN - PLUMBING

SCALE 1/8" = 1'-0"



P1.3



NO.	ISSUED	DATE
1	ISSUED	10/2

NO.	REVISIONS	DATE

CONSULTANTS
STRUCTURAL:

MECHANICAL:
CRABTREE ENGINEERING
726 S. MT. MORIAH
MEMPHIS, TN 38117
(901) 767-9898

PLUMBING:
CRABTREE ENGINEERING
726 S. MT. MORIAH
MEMPHIS, TN 38117
(901) 767-9898

ELECTRICAL:
CHS ENGINEERING
726 S. MT. MORIAH
MEMPHIS, TN 38117
(901) 767-2557



#HolidaySm

MILL
BOSSIER CITY,
LOUISIANA

SHEET NAME
THIRD FLOOR
PLAN - PLUMBING

DATE	10/26/07
DRAWN BY	JH
CHECKED BY	NI

SCALE	AS NOTED
PROJECT NO.	

DRAWING

THIRD FLOOR PLAN - PLUMBING



P1.4



ARCHITECTS

803 S. MOUNT MORIAH
SUITE 100B
MEMPHIS, TN 38117
(901) 553-2544
info@lwaarchitects.com

NO.	ISSUED	DATE
1	ISSUED	10/26/07

NO.	REVISIONS	DATE

DESIGNED BY LWA ARCHITECTS, INC.
DRAWN BY LWA ARCHITECTS, INC.
CHECKED BY LWA ARCHITECTS, INC.
CONSULTANTS

MECHANICAL:
COURTNEY ENGINEERING
725 S. MAIN
MEMPHIS, TN 38117
(901) 767-6888

PLUMBING:
COURTNEY ENGINEERING
725 S. MAIN
MEMPHIS, TN 38117
(901) 767-6888

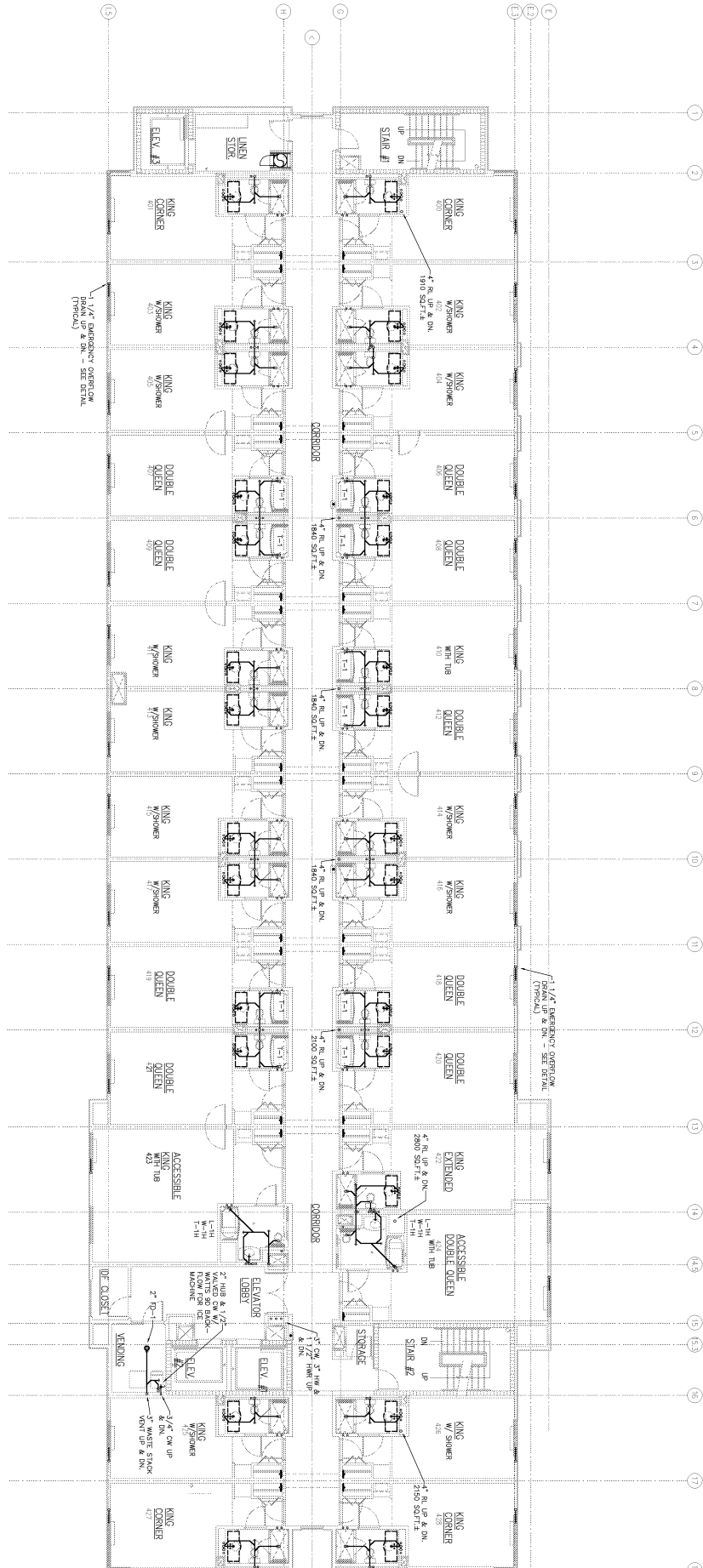
ELECTRICAL:
OHS ENGINEERING
725 S. MAIN
MEMPHIS, TN 38117
(901) 767-2657



Holding Swm
BOSSIER CITY,
LOUISIANA
SHEET NAME
FOURTH FLOOR
PLAN - PLUMBING

DATE	10/26/07
DRAWN BY	JH
CHECKED BY	PL
FILE NAME	1507P1-5
SCALE	AS NOTED
PROJECT NO.	1507

P1.5



FOURTH FLOOR PLAN – PLUMBING
SCALE: 1/8" = 1'-0"



ARCHITECTS

803 S. MOUNT MORIAM
SUITE 100B
MEMPHIS, TN 38117
(901) 855-1715 F.
(901) 855-2365 C.
info@lwa.com
www.lwa.com

NO.	ISSUED	DATE
1	ISSUED	10/26/07

NO. REVISIONS DATE

COMPREHENSIVE PLUMBING AND MECHANICAL
DRAWINGS FOR THE SIXTH FLOOR OF THE
PENTHOUSE AT THE MOUNT MORIAM
HOTEL IN MEMPHIS, TENNESSEE.

CONSULTANTS

MECHANICAL:
GROUTIER ENGINEERING
2825 W. W. NORTH
MEMPHIS, TN 38117
(901) 787-8888

PLUMBING:
GROUTIER ENGINEERING
2825 W. W. NORTH
MEMPHIS, TN 38117
(901) 787-8888

ELECTRICAL:
OHS ENGINEERING
2825 W. W. NORTH
MEMPHIS, TN 38117
(901) 787-2827

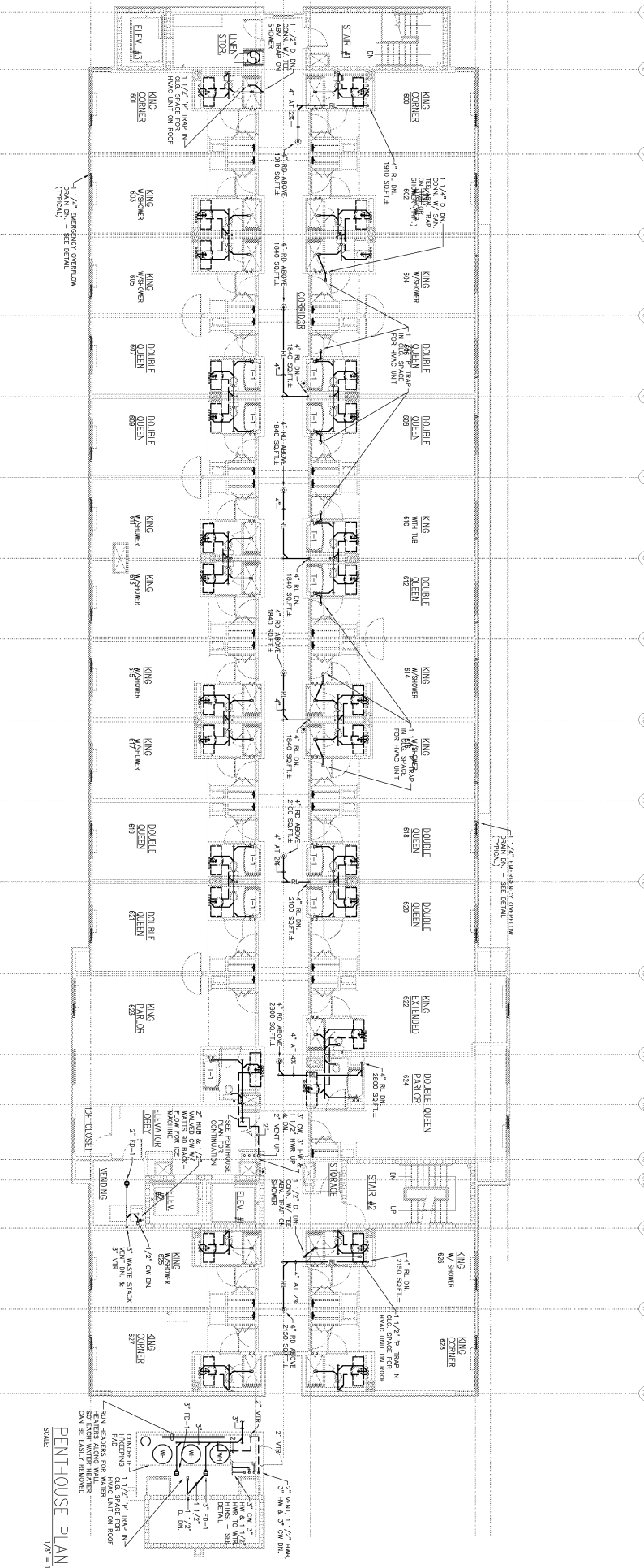


Holding Sm
BOSSCHER, J.
LOUISIANA
MILLENNIUM

SHEET NAME
SIXTH FLOOR
PLAN - PLUMBING

DATE	10/26/07
DRAWN BY	JH
CHECKED BY	PL
FILE NAME	1507P1-7
SCALE	AS NOTED
PROJECT NO.	1507

P1.7

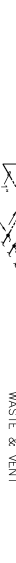


SIXTH FLOOR PLAN - PLUMBING

SCALE: 1/8" = 1'-0"

PENTHOUSE PLAN

SCALE: 1/8" = 1'-0"



SCALE: 1/4"=1'-0"

SCALE: 1/4"=1'-0"

SUITE 100B
MEMPHIS, TN 38117

INTERNET: www.civilservice.com

	ISSUED	10/2
1		

CONSULTANTS

726 S. MT. MORIAH

CRABTREE ENGINEERING

ELECTRICAL:

(901) 767-2557

JENNIFER A. CRABTREE

DOUGLAS, ON THE
POLICE

KITCHEN PLAN -

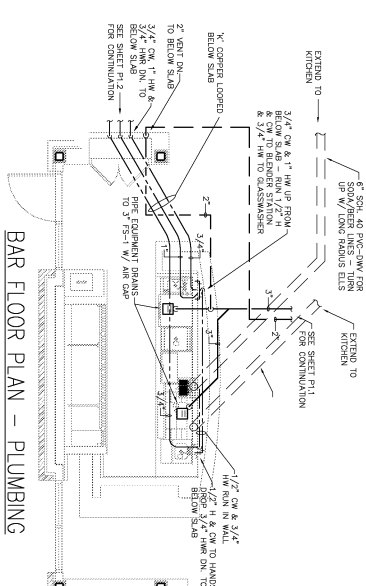
JH

1507P1

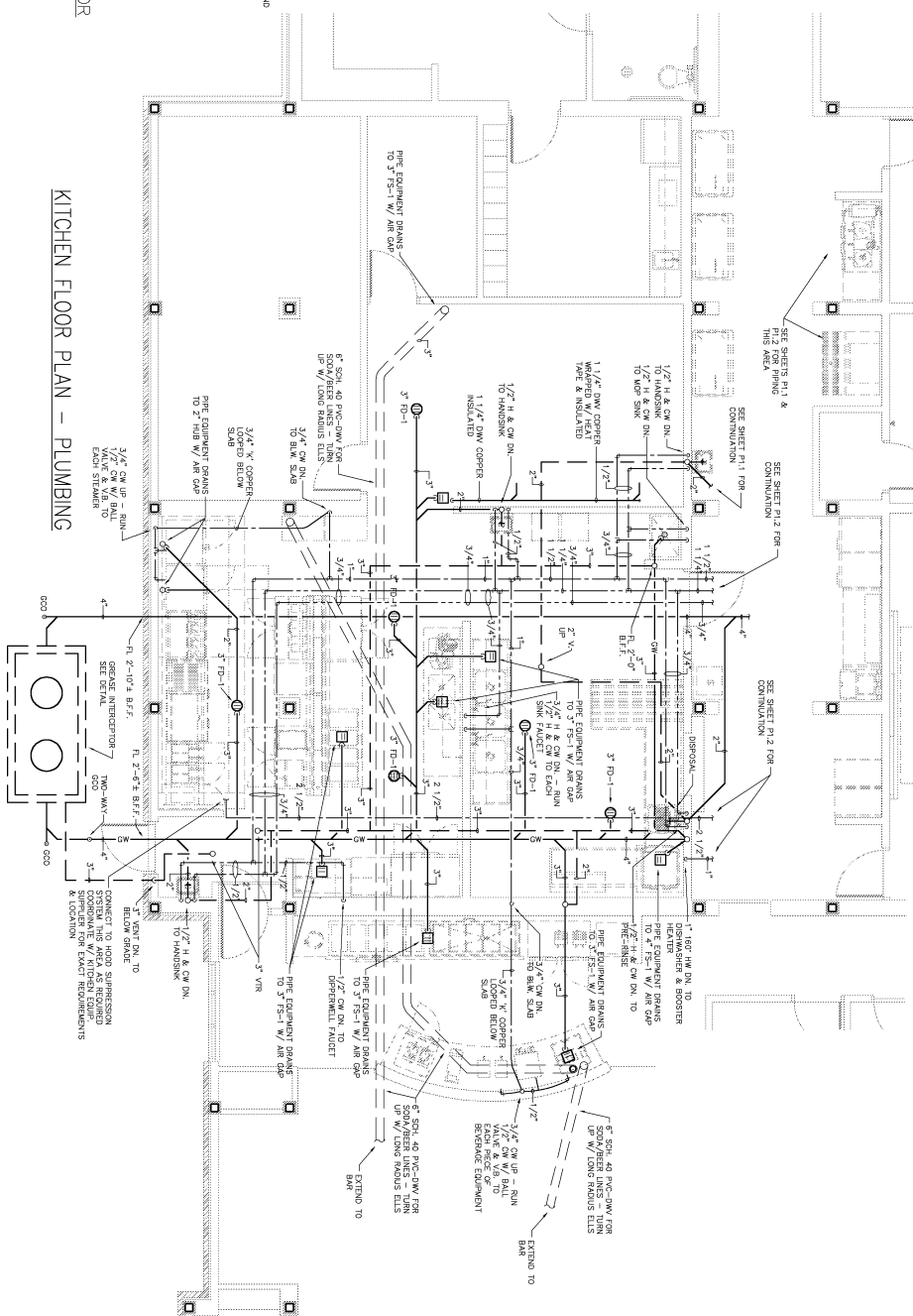
4507

2

P1.5



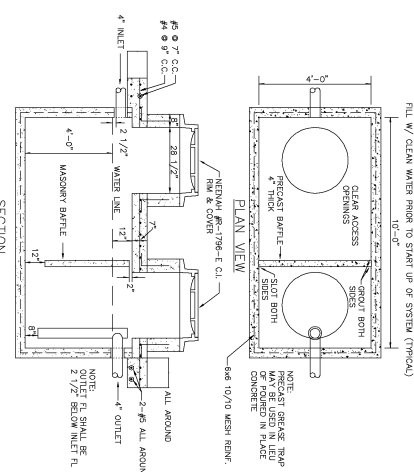
BAY FLOOR FLAIN - FLOUIDIBIN



KITCHEN FLOOR FLAY - FLUMIDIN

[illegible]

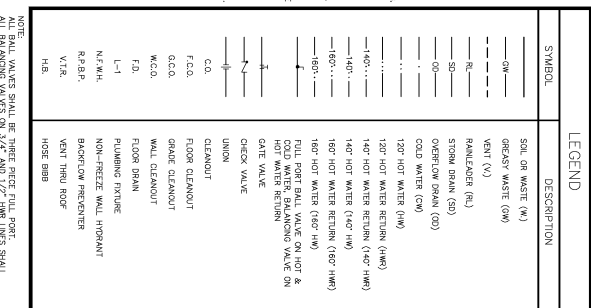
KITCHEN/BAR NOTE



SECURITY

1,200 GALLON MASTER BASIN / GREASE INTERCEPTOR

NOTE: SUBMIT TO OVERLAPPING AUTHORITIES FOR APPROVAL FROM TO STEERING COMMITTEE

[illegible]

DRAIN, CLEANOUT AND HYDRANT SCHEDULE		
SYMBOL	FIXTURE	MANUAL DESCRIPTION
NTHW	WALL HYDRANT	MODEL 65 SERIES NON-FREEZE AHS-SPRINKLER WALL HYDRANT WITH BRONZE CASING & INTERNAL BRONZE PREVENTER
FCO	FLOOR CLEANOUT	FM-4620 CAST IRON CLEANOUT WITH SECONDARY SLOTTED COVER
WCO	WALL CLEANOUT	FM-4620R FOR 8" OR 10" OR 12" WALL CONSTRUCTION OR FM-4620-12C FOR FLASTER OR TIE WALL CONSTRUCTION
GCO	GRADE CLEANOUT	FM-4620-2 CAST IRON, WITH A LOCKED SET SCREW TRACITOR TOP SET IN 12"x12"x4" CONCRETE PAD
FD-1	FLOOR DRAIN	FM-1100 CAST IRON FLOOR DRAIN WITH 5/8" NPT INLET, BRONZE STRAINER AND 3/4" SLOTTED BUCKET
FD-2	FLOOR DRAIN	FM-1100-2R CAST IRON FLOOR DRAIN WITH 1" NPT INLET, BRONZE STRAINER AND 2" SLOTTED BUCKET
FD-3	FLOOR DRAIN	# 22016 CAST IRON DRAIN W/ DOME STRAINER
FS-1	FLOOR SINK	FM-9110 CAST IRON FLOOR SINK W/ HALF DRAIN
HIB	WAGE BBS	R327 CHANGE PLATED WAGE BBS WITH #127 SPOUT OUTLET W/ALUMINUM BREAKER
RPBP	BACKFLOW PREVENTERS	8809S REDUCED PRESSURE PRINCIPLE TYPE BACKFLOW PREVENTERS WITH STRAINER
RD	ROOF DRAIN	FM-3000 CAST IRON ROOF DRAIN W/ CAST IRON DOME, UNDERBOW CLAMP & 3/4" LEAD FLASHING
OD	OVERFLOW DRAIN	SMILE AS NOT EXCEPT ALD WITH 2" HIGH DRAIN
—	TRAP PRIMER	FM-2400-101 CHANGE PLATED TRAP PRIMER VALVE WITH W/ALUMINUM BREAKER

SEE ARCHITECTURAL PLANS FOR EXACT HEIGHT AND LOCATION OF ALL FIXTURES					
SYMBOL	FIXTURE	MANUF.	BKASS	TRAP	SUPPLY
W-1	WATER CLOSET	AMERICAN STANDARD	---	---	2" x 1/2" / 1/2" SIZES
W-1H	WATER CLOSET	AMERICAN STANDARD	---	---	3" x 1/2" / 1/2" SIZES
W-2	WATER CLOSET	AMERICAN STANDARD	---	---	"
W-2H	WATER CLOSET	AMERICAN STANDARD	---	---	"
U-1	URINAL	AMERICAN STANDARD	---	---	3/4"

[illegible]

**CONSULTANTS
STRUCTURAL:**
COPYRIGHT BY LHW ARCHITECTS, INC.
WARNING: UNAUTHORIZED COPYING VIOLATES
U.S. COPYRIGHT LAWS AND WILL SUBJECT THE
VIOLATOR TO LEGAL PROSECUTION.

CRABTREE ENGINEERING
726 S. MT. MORIAH
MEMPHIS, TN 38117
(901) 767-9898

CRABTREE ENGINEERING
726 S. MT. MORIAH
MEMPHIS, TN 38117
(901) 767-9898

ELECTRICAL:
CHS ENGINEERING
726 S. MT. MORIAH
MEMPHIS, TN 38117

BOSSIER CITY,
LOUISIANA

SHEET NAME
SCHEDULES AND
DETAILS - PLUMBING

DRAWN BY JH

CHECKED BY

FILE NAME	1507P1-1
SCALE	AS NOTE

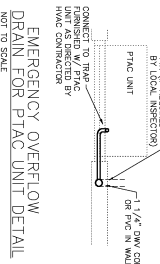
1507
DRAWING

P1.1

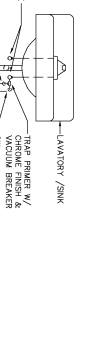
SYMBOL	DESCRIPTION
—	SOL. OR WASTE (CW)
—	DECAST WASTE (CW)
—	VENT (V)
—	RAINFALLER (RA)
—	STORM DRAIN (SD)
—	OVERFLOW DRAIN (OD)
—	COLD WATER (CW)
—	120 HOT WATER (HW)
—	120 HOT WATER RETURN (HWB)
—	140 HOT WATER RETURN (140 HWB)
—	140 HOT WATER (140 HW)
—	160 HOT WATER RETURN (160 HWB)
—	160 HOT WATER (160 HW)
—	TILL FORT BALL VALVE ON HOT & COLD WATER RETURN VALVE ON HOT WATER RETURN
—	DATE VALVE
—	CHECK VALVE
—	UNION

SYMBOL	DESCRIPTION
—	SOL. OF WASTE (N)
—GW	GROULARY WASTE (GW)
----	VENT (V)
----	RAINFALLER (RL)
—S—	STONE DRAIN (SD)
—50—	OVERFLOW DRAIN (OD)
—0—	COLD WATER (CW)
—	120° HOT WATER (HW)
—	120° HOT WATER RETURN (HWR)
—	140° HOT WATER RETURN (40° HW)
—140°—	140° HOT WATER (40° HW)
—160°—	160° HOT WATER RETURN (60° HW)
—160°—	160° HOT WATER (60° HW)
—f—	FILL PORT BALL VALVE ON HOT & COLD WATER, BALANCING VALVE ON HOT WATER RETURN
—f—	DATE VALVE
—	CHECK VALVE
—	UNION
—	CLEANOUT
—	FLOOR CLEANOUT
—	SHAVE CLEANOUT
—	WALL CLEANOUT
—	FLOOR DRAIN
—	PLUMBING FIXTURE
—	NON-FREEZE WALL HYDRANT
N.F.H.	BAZOOKA PREVENTER
R.B.P.	VENT THRU ROOF
H.B.	MOSE DRAIN

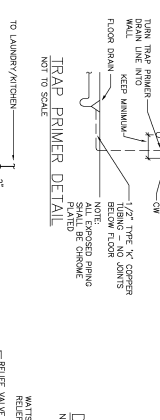
NOTE: ALL BALL VALVES SHALL BE THREE PIECE FULL PORT. ALL BALANCING VALVES ON 3/4" AND 1/2" HMR LINES SHALL BE EQUAL TO BELL & GOSSETT LOWFLOW CIRCUIT SETTERS MODEL "B" CALIBRATED BALANCING VALVES FOR LOW FLOW APPLICATIONS. BALANCING VALVE AT HMR PLUMBS SHALL BE EQUIPPED WITH TEST PORTS FOR BALANCING PURPOSES. CONTRACTOR SHALL TEST AND INDEPENDENT TEST & BALANCE COMPANY TO TEST & BALANCE HMR SYSTEMS & PROVIDE ARCHITECT W/ TEST & BALANCE REPORT.



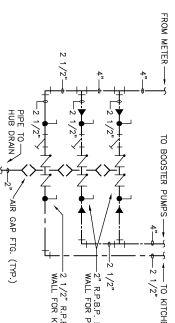
**EMERGENCY OVERFLOW
DRAIN FOR PTAC UNIT DETAIL**



TRAP PRIMER DETAIL
NOT TO SCALE



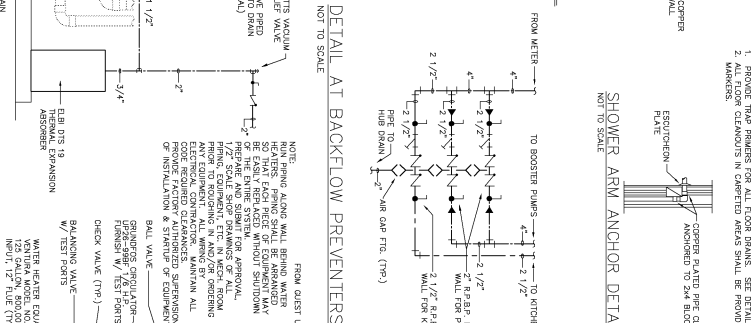
DETAIL AT BACKFLOW PREVENTERS



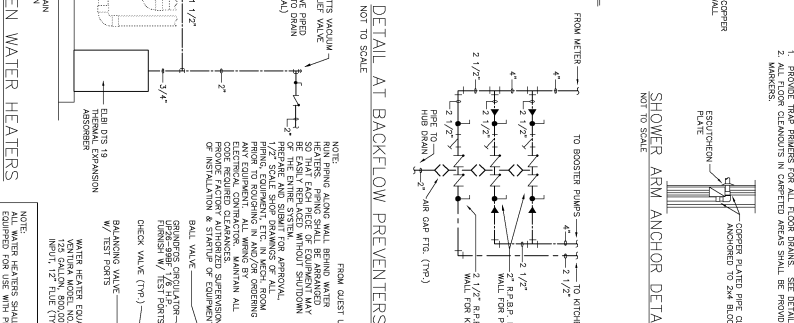
ARM ANCHOR DETAIL



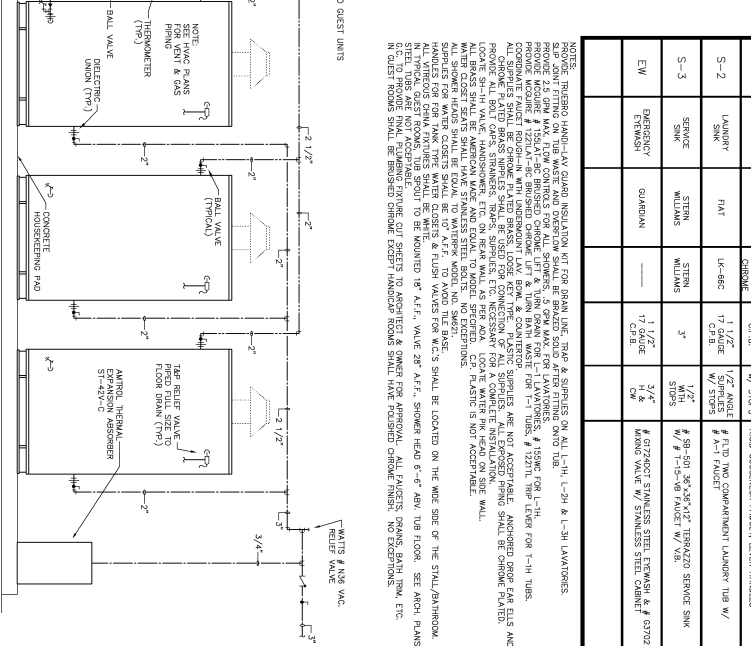
1 COMP.	SYMONS S-245-LAM	1 1/2" 17 GAUGE	1 1/2" ANGLE SIPPLIES
---------	---------------------	-----------------	--------------------------



WATER HEATERS



PIPING SCHEMATIC AT GUEST WATER HEATERS

[illegible]

WATTS @ N36 VAC.
REF. VALVE

PUMP SCHEMATIC AT GUEST WATER HEATERS