



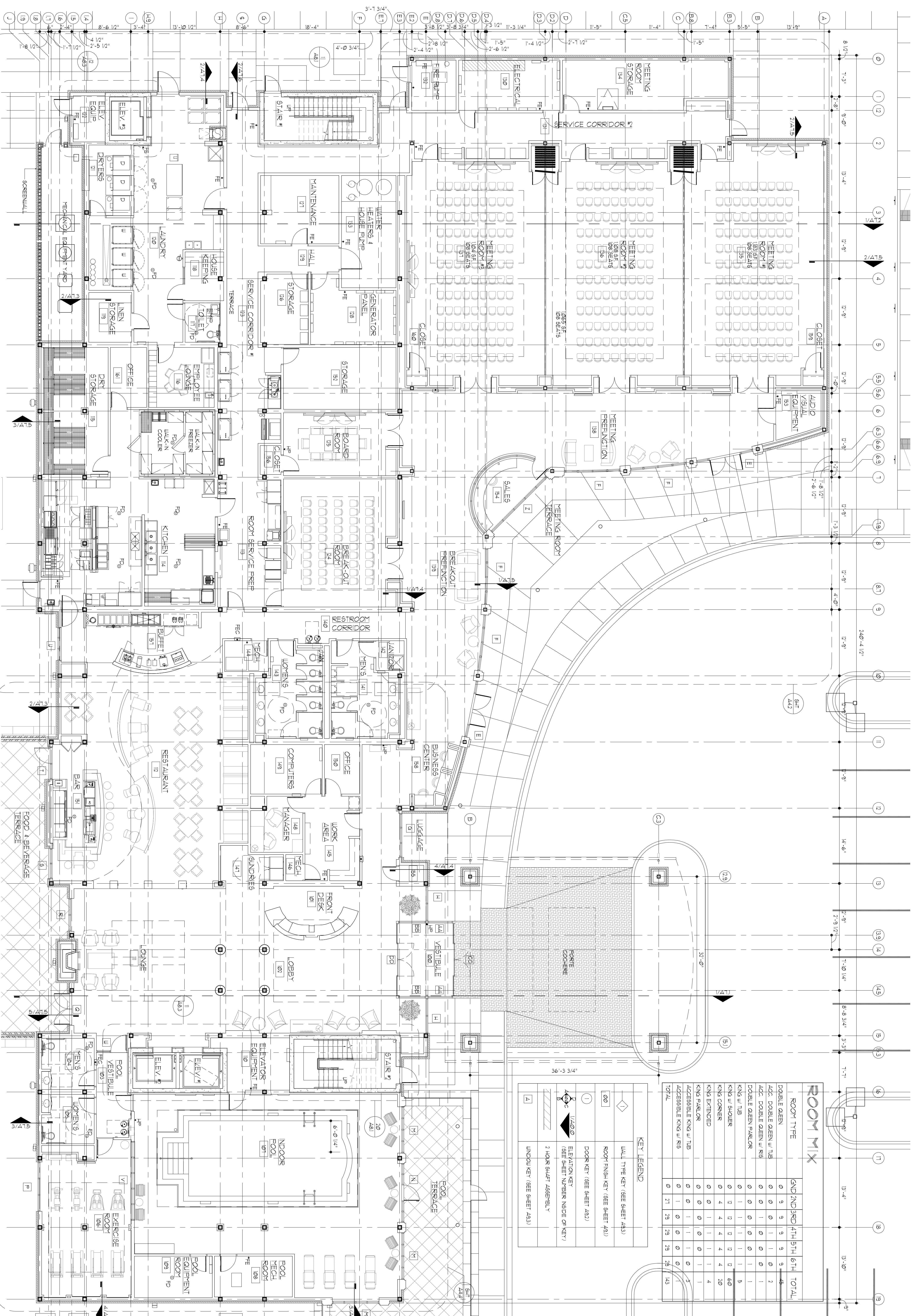
803 S. MOUNT MORIAH  
SUITE 100B  
MEMPHIS, TN 38117  
(901) 683-7775 P.  
(901) 683-2385 F.  
lwa@lwarchitects.com

NO. ISSUED DATE  
1 ISSUED 10/26/07

ROOM TYPE	GRID 2ND	GRID 3RD	GRID 4TH	GRID 5TH	GRID 6TH	TOTAL
DOUBLE QUEEN	0	9	9	9	9	45
ACC. DOUBLE QUEEN w/ TUB	0	0	0	1	0	2
ACC. DOUBLE QUEEN w/ RS	0	0	0	0	0	0
DOUBLE QUEEN PARLOR	0	0	0	0	0	0
KING w/ TUB	0	1	1	1	1	5
KING w/ SHOWER	0	2	2	2	2	10
KING CORNER	0	4	4	4	4	20
KING EXTENDED	0	0	1	1	1	4
KING PARLOR	0	0	0	1	1	5
ACCESSIBLE KING w/ TUB	0	0	0	0	0	0
ACCESSIBLE KING w/ RS	0	1	0	0	0	1
ACCESSIBLE KING w/ RS	0	1	0	0	0	1
TOTAL	0	21	29	29	29	145

KEY LEGEND	DESCRIPTION
◆	WALL TYPE KEY (SEE SHEET A43)
◻	ROOM FINISH KEY (SEE SHEET A43)
①	DOOR KEY (SEE SHEET A42)
②	ELEVATION KEY (SEE SHEET NUMBER, INSIDE OF KEY)
③	2-HOUR SHUTTLE ASSEMBLY
④	WINDOW KEY (SEE SHEET A43)

NO. REVISIONS DATE  
CONSULTANTS  
STRUCTURAL:  
SK INTERNATIONAL, INC.  
130 SOUTH MAIN STREET  
HUNTSVILLE, AL 35811  
(256) 862-3098  
MECHANICAL:  
CRAFTREE ENGINEERING  
726 S. MT. MORIAH  
MEMPHIS, TN 38117  
(901) 767-9898  
PLUMBING:  
CRAFTREE ENGINEERING  
726 S. MT. MORIAH  
MEMPHIS, TN 38117  
(901) 767-9898  
ELECTRICAL:  
CHS ENGINEERING  
726 S. MT. MORIAH  
MEMPHIS, TN 38117  
(901) 767-2557



GROUND FLOOR PLAN  
SCALE: 1/8" = 1'-0"  
27,458.95'

A2.1

SHEET NAME: GROUND FLOOR PLAN  
DATE: 10/26/07  
DRAWN BY: AP  
CHECKED BY: PEL  
FILE NAME: 1507-A201  
SCALE: AS NOTED  
PROJECT NO.: 1507  
DRAWING:

# Holiday Inn  
BOSSIER CITY,  
LOUISIANA  
MILLENNIUM