

MISHRA
ARCHITECTURE PLLC

6800 S Creek Rd., Charlotte, NC 28277
Ph: (704) 625-6554 Fax: (704) 919-5822
EMAIL: ashish@mishraarch.com
WEB: www.mishraarch.com

CIVIL:
Benchmark Engineering and Surveying
101 Highpointe Court, Suite B
Brandon, MS 39042
Phone: (601) 591-1077
Fax: (601) 591-0177
Email: mkebes@bellsouth.net

STRUCTURAL:
WGPM, Inc.
11220 Elm Lane, Suite 201
Charlotte, NC 28277
Phone: (704) 542-7199
Fax: (704) 542-7195
Email: lwright@wgpmnc.com

MEP:
Allied Consulting Engineers
2905-D Queen City Drive
Charlotte, NC 28208
Phone: (704) 399-3943
Email: asoler@allied-engineers.com

REVISIONS		
No.	Date	Description

Information contained on this drawing and in all digital files associated is authorized for use on the project named herein only and is the property of MISHRA ARCHITECTURE PLLC and may not be reproduced in any manner without express written or verbal permission from authorized individuals. Original drawing is 24"x36" and scales are as indicated. © 2013 MISHRA ARCHITECTURE PLLC



KEY PLAN

Shiva Southaven Inc.

Holiday Inn Express & Suites

Lot 16 (Rev Lot 3) Southcrest Pkwy.
Southcrest Subdivision
Southaven, MS 38671

Drawing Title

Elevations

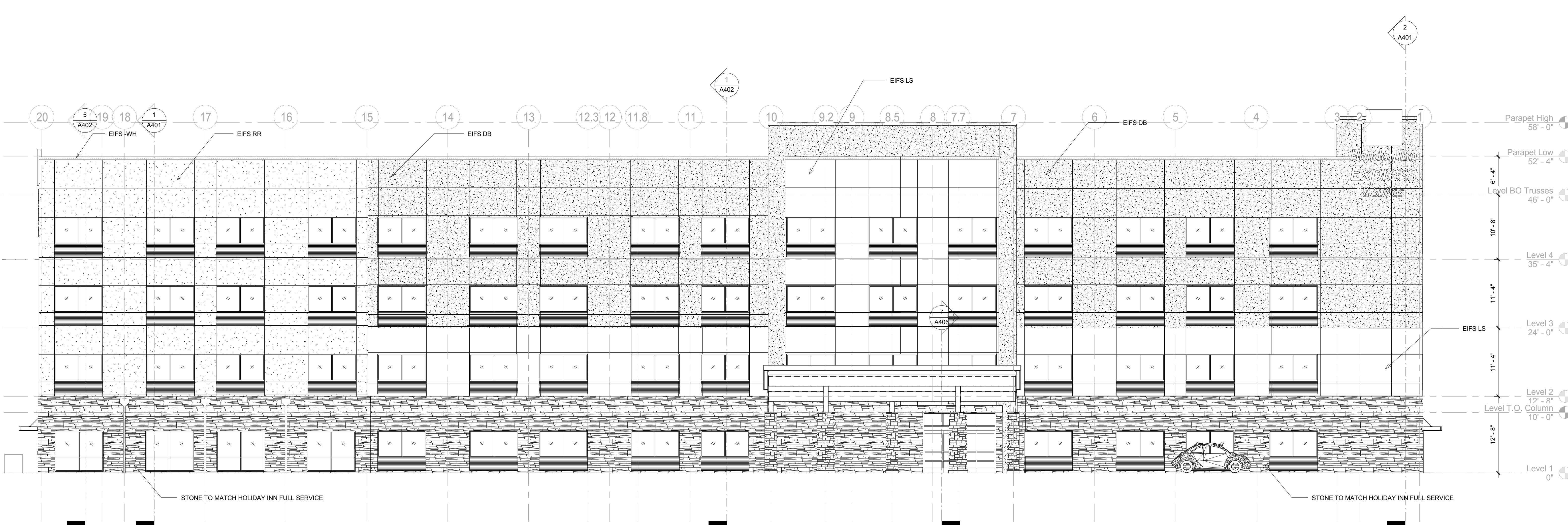
Phase

Construction Documents

Project No.	14-081	Sheet No.	A301
Prepared by	Author		
Checked by	Checker		
Date	Feb. 27, 2015		

Review

Holiday Inn Express & Suites



EXTERIOR MATERIALS LEGEND.

CONTEMPORARY EXTERIOR SCHEME

EIFS-LS, LIMESTONE/SANDSTONE.
PAREX TEXTURED, MULTI-TEXTURE SURFACE WITH PDR ACRYLIC FINISH.
EIFS-LSS, LIMESTONE/SANDSTONE.
PAREX SMOOTH, SAND SMOOTH SURFACE WITH PDR ACRYLIC FINISH.
COLOR: PAREX MOONDANCE 3027L.

EIFS-DB, DARK BRONZE.
PAREX MEDIUM, SAND FINE SURFACE WITH PDR ACRYLIC FINISH.
COLOR: PAREX TWIG 3021L.

EIFS-RR, RUSTIC RED.
PAREX SMOOTH, SAND SMOOTH SURFACE WITH PDR ACRYLIC FINISH.
COLOR: PAREX SUN DRIED 3011L.

EIFS-WH, WHITE.
PAREX SMOOTH, SAND SMOOTH SURFACE WITH PDR ACRYLIC FINISH.
COLOR: PAREX SNOWBALL 10400L.

