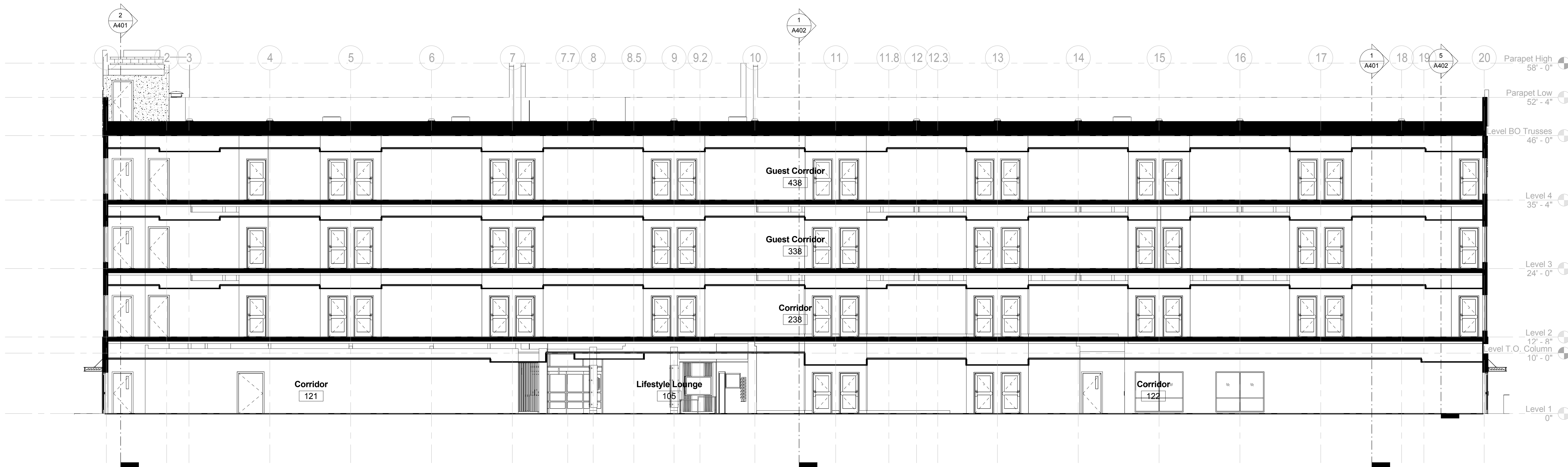


3/2/2015 5:15:05 AM



③ Section 6
1/8" = 1'-0"

TYPICAL EXTERIOR MASONRY WALL ASSEMBLY

FACE BRICK WITH 7/8" WIDE 29 GA. GALV. METAL TIES AT 32" O.C.
HORIZONTAL 16" O.C. VERTICAL W/ 1" AIR GAP 8" CMU BLOCK W/
WATERPROOFING 1" SCORED RIGID INSULATION. FURRYING
CANNELS W/ 5/8" GYP BD. ON INSIDE

TYPICAL EIFS WALL CONSTRUCTION:

-5/8" GYPSUM ON 6" WOOD STUDS @ 16" O.C. W/ UNFACED R-13 BATT
INSULATION
-5/8" PLYWOOD SHEATHING
-2" DRAINABLE EIFS

TYPICAL ROOF CONSTRUCTION:
ONE HOUR RATED ASSEMBLY AS PER U.L. DESIGN P-522

-60 MIL FULLY ADHERED TPO (THERMOPLASTIC OLEFIN) WHITE
ROOFING MEMBRANE
-4.5" MINIMUM RIGID INSULATION ON ROOF DECK.
-5/8" GYP. BD. WITH 6" BATT INSULATION MIN. ON 2 1/2" FURRING
CHANNELS @ 24" O.C. ON CEILING SIDE-SEE STRUCTURAL
DRAWINGS FOR DETAILS

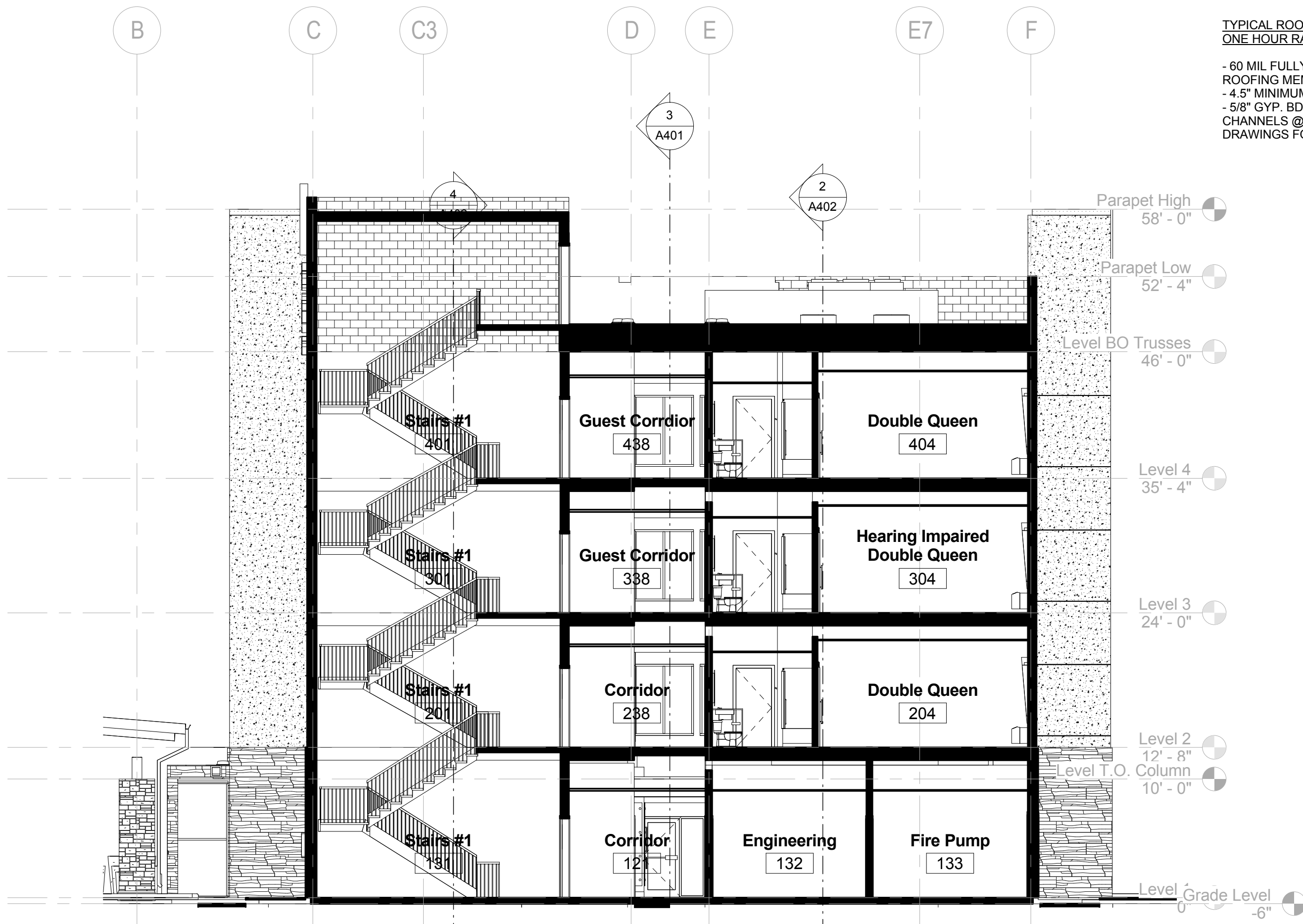
TYPICAL PARAPET CONSTRUCTION:

-PREFINISHED METAL COPING ON TREATED BLOCKING.
-ROOF MEMBRANE ALONG INSIDE FACE, UP AND OVER TOP OF PARAPET
WALL
-PLYWOOD (MOISTURE RESISTANT) NAILER PANEL AT INSIDE FACE OF
WALL-SEE DETAIL

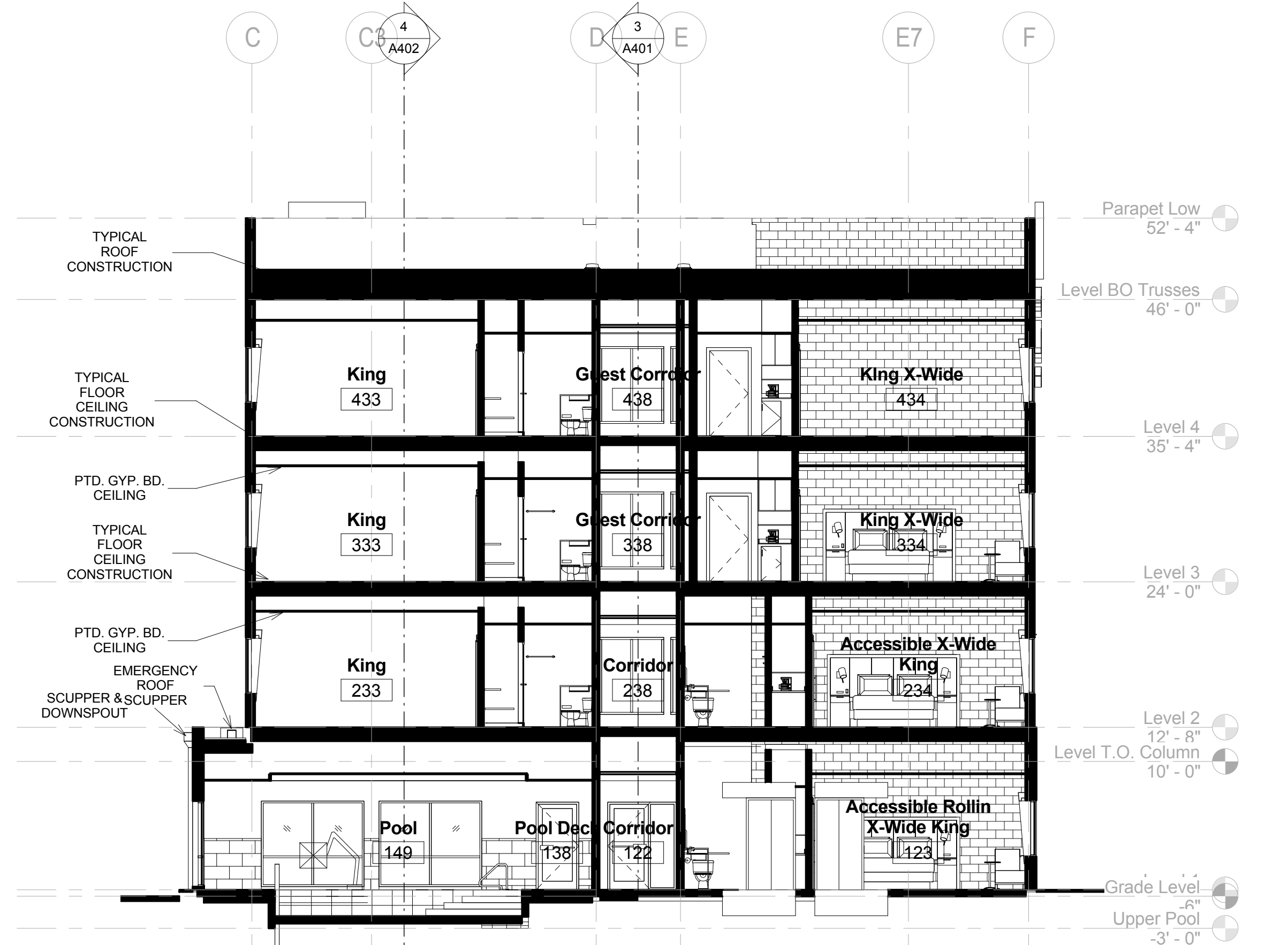
TYPICAL FLOOR/CEILING ASSEMBLY:
ONE HOUR RATED ASSEMBLY

3/4" GYPCRETE ON SEALANT OVER 23/32" STRUCTURAL PANELS ON 16"
WOOD TRUSSES @ 24" O.C.
5/8" F.C. GYP. BD. ON #26 MSG. RESILIENT CHANNELS @ 16" O.C.

ALL ACOUSTICAL CEILING TILE TO BE INSTALLED BELOW THE
ONE-HOUR RATED FLOOR/CEILING ASSEMBLY WITHOUT COMPROMISING
ON THE ASSEMBLY RATING. ALL PENETRATIONS TO BE FIRE-CAULKED AS
PER UL STANDARDS TO PROVIDE ONE-HOURS FLOOR/CEILING ASSEMBLY
ON ALL FLOORS.



② Section @ Stair #1
1/8" = 1'-0"



① Section 2
1/8" = 1'-0"

MISHRA
ARCHITECTURE PLLC
6800 S Creek Rd., Charlotte, NC 28277
Ph: (704) 625-6554 Fax: (704) 919-5822
EMAIL: ashish@mishraarch.com
WEB: www.mishraarch.com

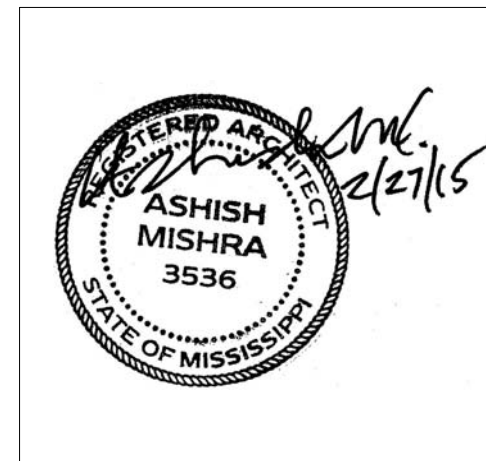
CIVIL:
Benchmark Engineering and Surveying
101 Highpointe Court, Suite B
Brandon, MS 39042
Phone: (601) 591-1077
Fax: (601) 591-0177
Email: mkebes@bellsouth.net

STRUCTURAL:
WGPM, Inc.
11220 Elm Lane, Suite 201
Charlotte, NC 28277
Phone: (704) 542-7199
Fax: (704) 542-7195
Email: lwright@wgpmnc.com

MEP:
Allied Consulting Engineers
2905-D Queen City Drive
Charlotte, NC 28208
Phone: (704) 399-3943
Email: asoler@allied-engineers.com

REVISIONS		
No.	Date	Description

Information contained on this drawing and in all digital files associated is authorized for use on the project named herein only and is the property of MISHRA ARCHITECTURE PLLC and may not be reproduced in any manner without express written or verbal permission from authorized individuals. Original drawing is 24"x36" and scales are as indicated. ©2013 MISHRA ARCHITECTURE PLLC



KEY PLAN

Shiva Southaven Inc.

Holiday Inn Express & Suites

Lot 16 (Rev Lot 3) Southcrest Pkwy.
Southcrest Subdivision
Southaven, MS 38671

Drawing Title
Sections

Phase
Construction Documents

Project No.	14-081	Sheet No.	A401
Prepared by	Author		
Checked by	Checker		
Date	Feb. 27, 2015		

Review

Holiday Inn Express & Suites