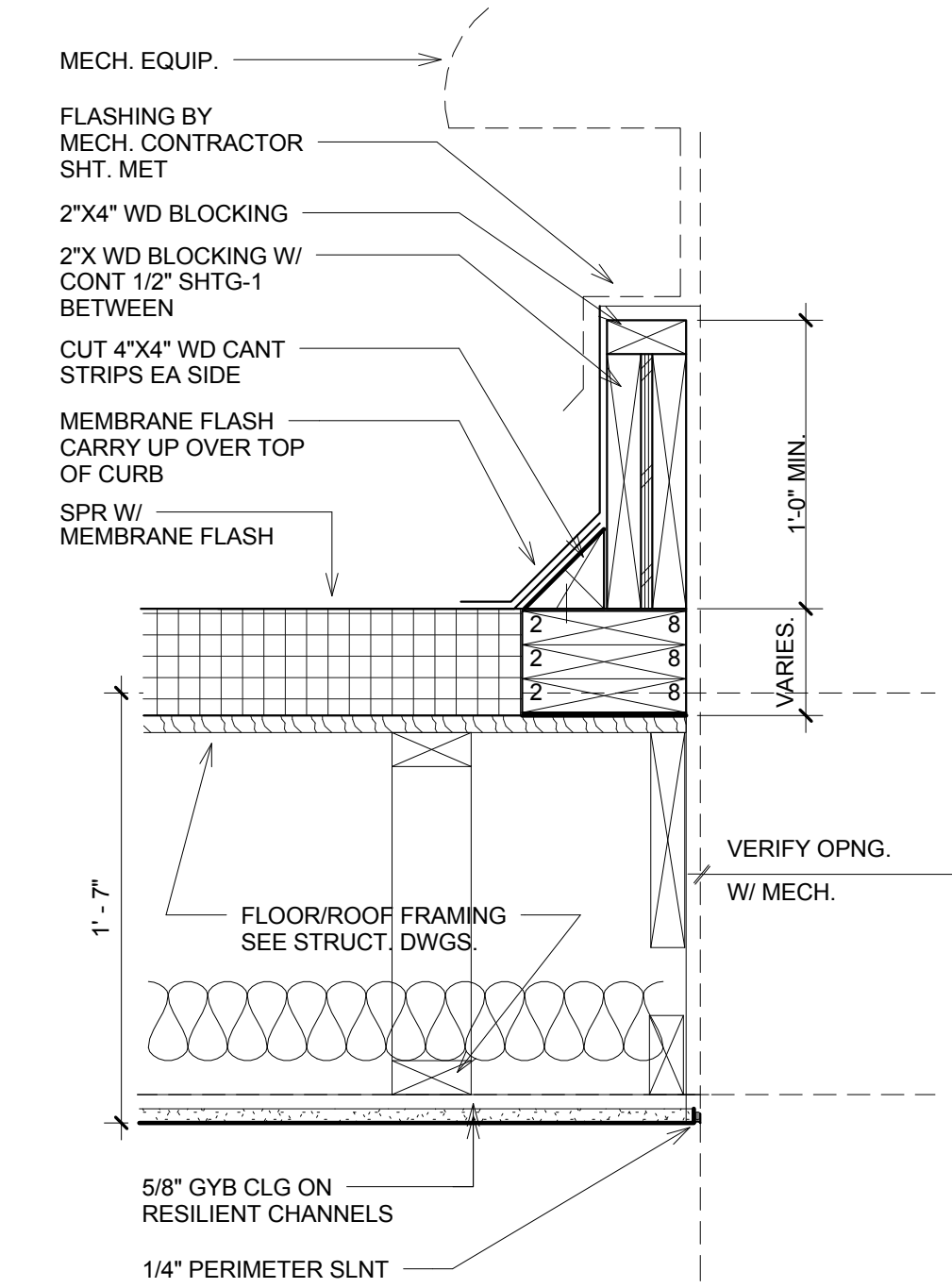
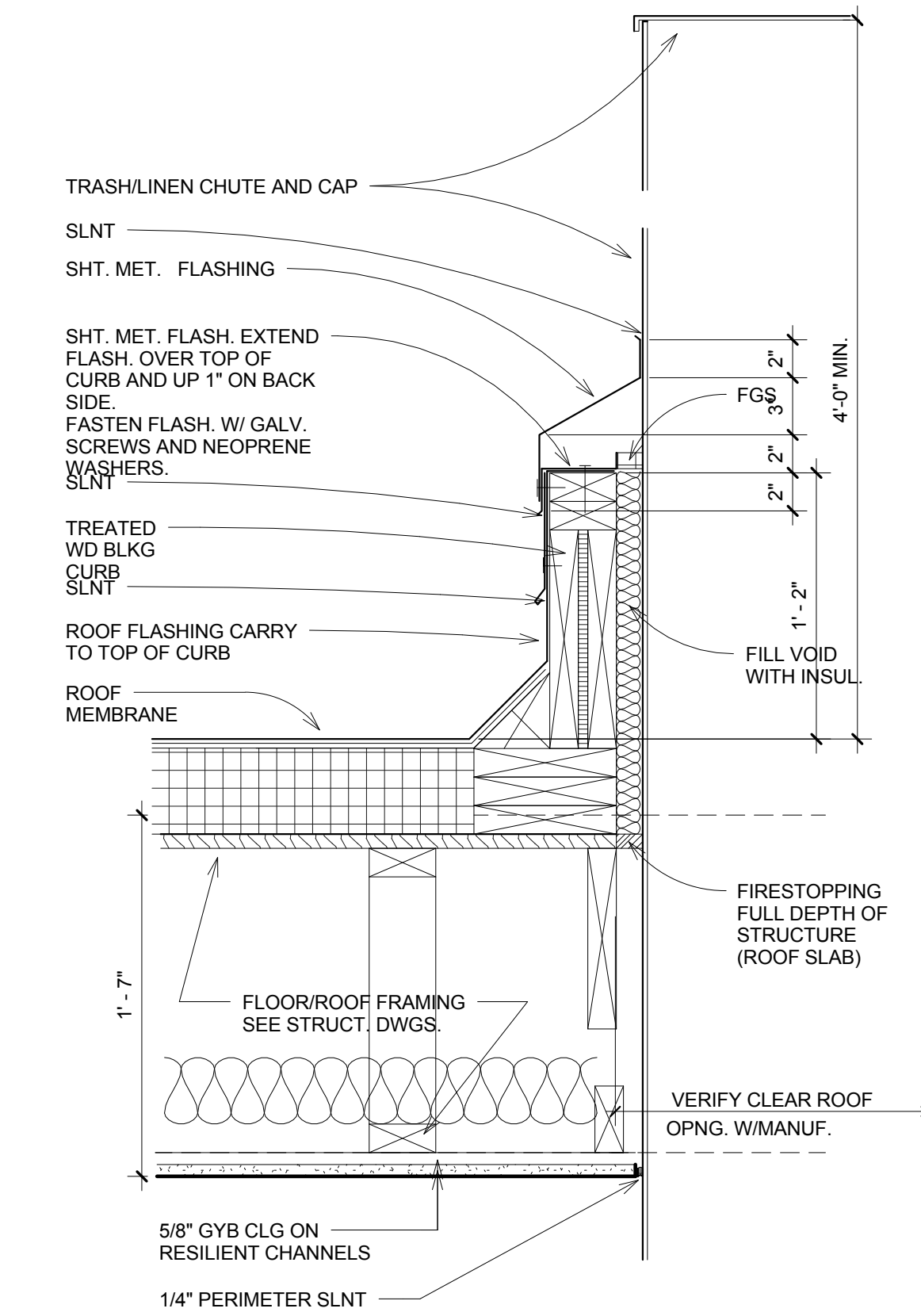


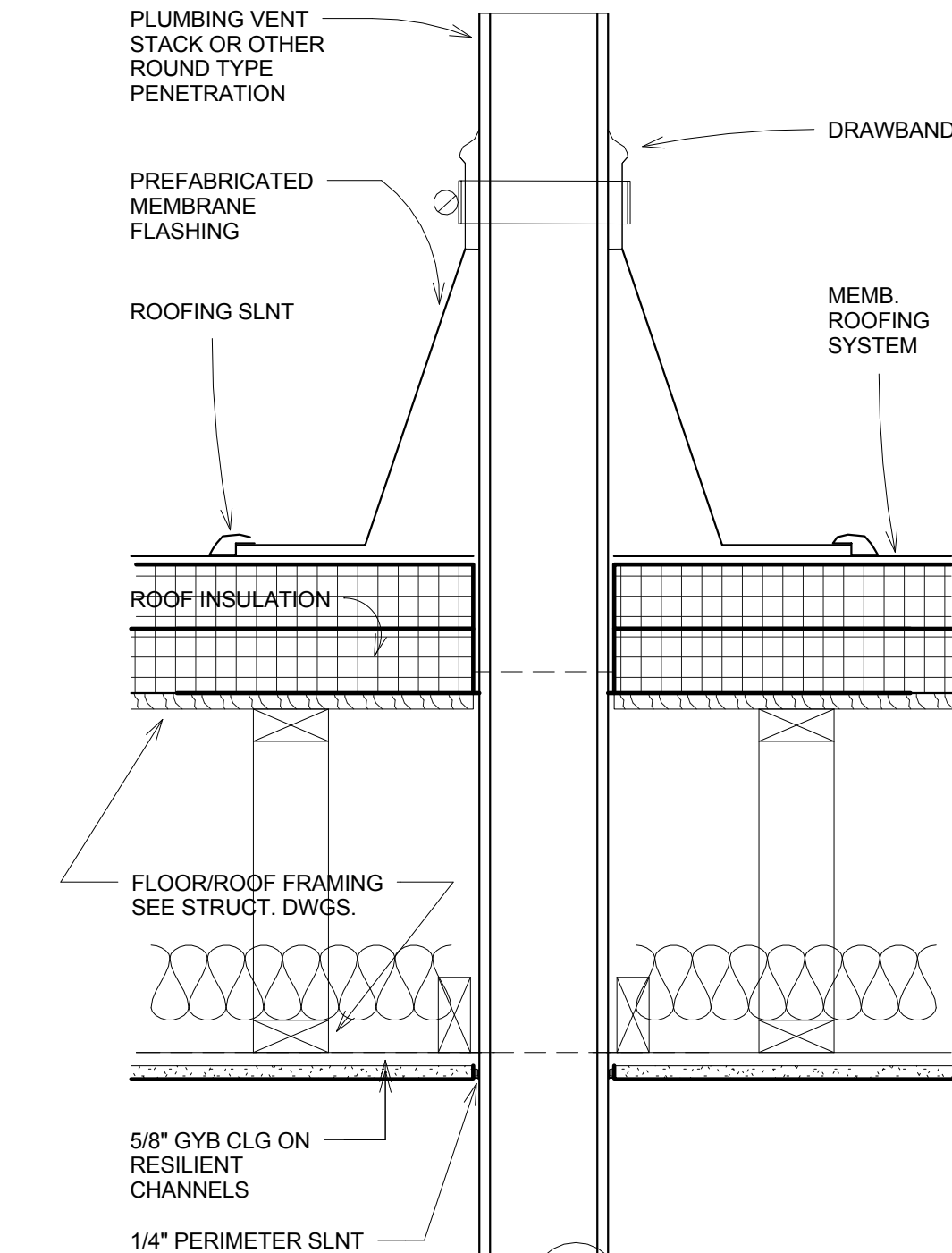
1 ROOF AHU CURB  
1 1/2" = 1'-0"



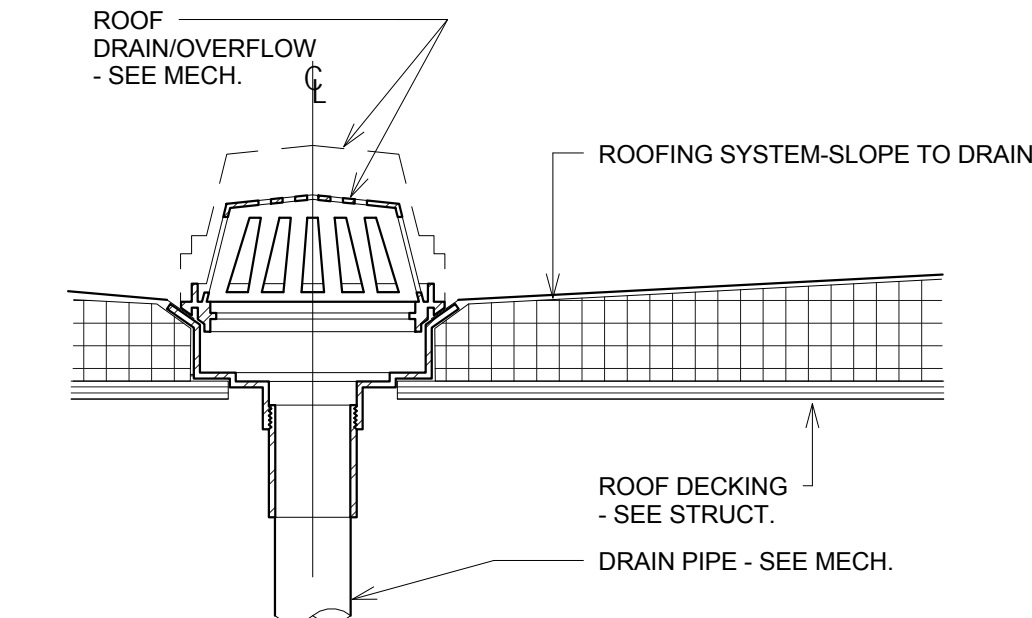
2 ROOF EQUIP CURB  
1 1/2" = 1'-0"



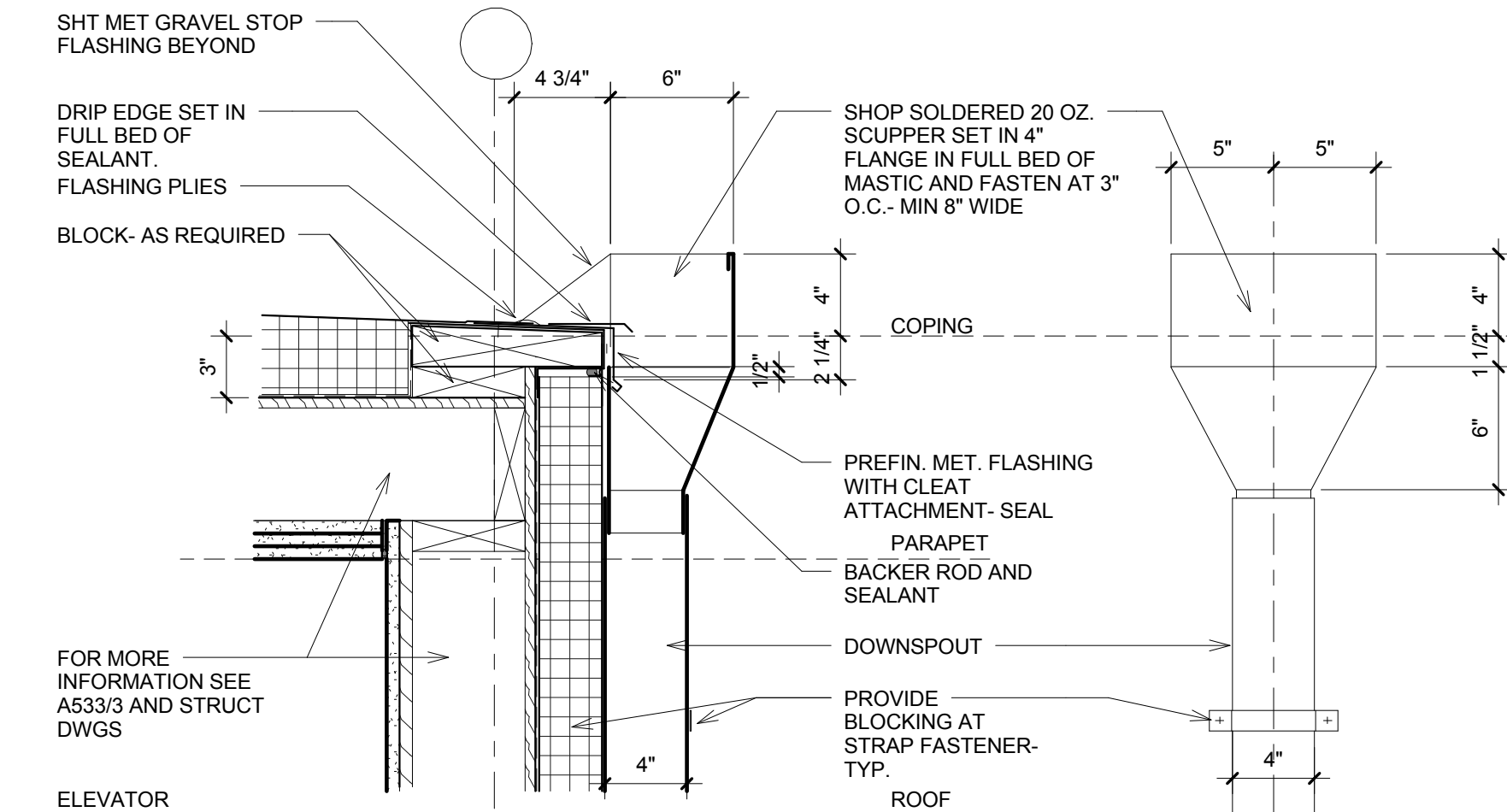
3 ROOF FLASHING AT LINEN CHUTE  
1 1/2" = 1'-0"



4 ROOF VENT  
1 1/2" = 1'-0"



5 ROOF DRAIN  
1 1/2" = 1'-0"



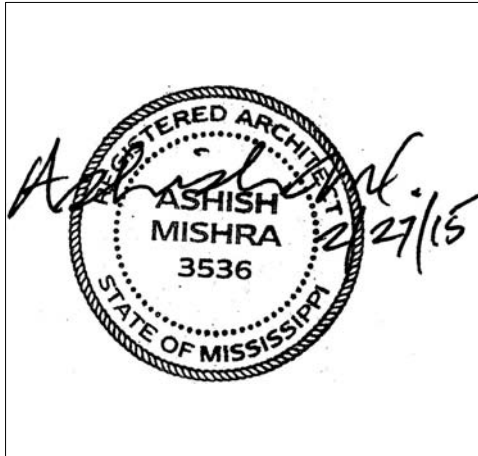
6 ROOF SCUPPER  
1 1/2" = 1'-0"

CONSTRUCTION NOTE:  
EIFS THICKNESS IS TYPICALLY 1 3/4". WHERE INDICATED ON EXTERIOR ELEVATION AS EIFS 3", ADJUST DETAIL FOR EIFS THICKNESS 3 1/4". SEE ALSO EIFS TRANSITION DETAILS FOR ADDITIONAL INFORMATION.  
GUESTROOM DEMISING WALL REGIONAL PREFERENCE, IT IS ACCEPTABLE TO REPLACE THE SEPARATE WALL CONSTRUCTION FOR THE GUESTROOM DEMISING WALL WITH THE A SINGLE WALL USING COMMON 2X8 TOP AND BOTTOM PLATES AND STAGGERED STUDS.

CONSTRUCTION NOTE:  
EIFS THICKNESS IS TYPICALLY 1 3/4". WHERE INDICATED ON EXTERIOR ELEVATION AS EIFS 3", ADJUST DETAIL FOR EIFS THICKNESS 3 1/4". SEE ALSO EIFS TRANSITION DETAILS FOR ADDITIONAL INFORMATION.  
GUESTROOM DEMISING WALL REGIONAL PREFERENCE, IT IS ACCEPTABLE TO REPLACE THE SEPARATE WALL CONSTRUCTION FOR THE GUESTROOM DEMISING WALL WITH THE A SINGLE WALL USING COMMON 2X8 TOP AND BOTTOM PLATES AND STAGGERED STUDS.

REVISIONS		
No.	Date	Description

Information contained on this drawing and in all digital files associated is authorized for use on the project named herein only and is the property of MISHRA ARCHITECTURE PLLC and may not be reproduced in any manner without express written or verbal permission from authorized individuals. Original drawing is 24"x36" and scales are as indicated. ©2013 MISHRA ARCHITECTURE PLLC



KEY PLAN

Shiva Southaven Inc.

Holiday Inn Express & Suites

Lot 16 (Rev Lot 3) Southcrest Pkwy.  
Southcrest Subdivision  
Southaven, MS 38671

Drawing Title  
Roof Details

Phase  
Construction Documents

Project No.	14-081	Sheet No.	
Prepared by	Author		
Checked by	Checker		A405
Date	Feb. 27, 2015		

Review