

MISHRA
ARCHITECTURE PLLC

6800 S Creek Rd., Charlotte, NC 28277
Ph: (704) 625-6554 Fax: (704) 919-5822
EMAIL: ashish@mishraarch.com
WEB: www.mishraarch.com

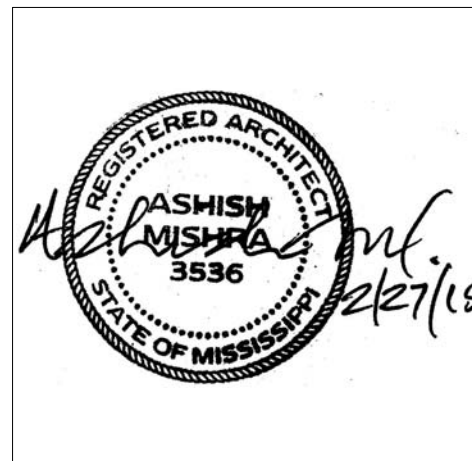
CIVIL:
Benchmark Engineering and Surveying
101 Highpointe Court, Suite B
Brandon, MS 39042
Phone: (601) 591-1077
Fax: (601) 591-0177
Email: mikes@bellsouth.net

STRUCTURAL:
WGPM, Inc.
11220 Elm Lane, Suite 201
Charlotte, NC 28277
Phone: (704) 542-7199
Fax: (704) 542-7195
Email: lwright@wgpmnc.com

MEP:
Allied Consulting Engineers
2905-D Queen City Drive
Charlotte, NC 28208
Phone: (704) 399-3943
Email: asoler@allied-engineers.com

REVISIONS		
No.	Date	Description

Information contained on this drawing and in all digital files associated is authorized for use on the project named herein only and is the property of MISHRA ARCHITECTURE PLLC and may not be reproduced in any manner without express written or verbal permission from authorized individuals. Original drawing is 24"x36" and scales are as indicated. © 2013 MISHRA ARCHITECTURE PLLC



KEY PLAN

Shiva Southaven Inc.

Holiday Inn Express & Suites

Lot 16 (Rev Lot 3) Southcrest Pkwy.
Southcrest Subdivision
Southaven, MS 38671

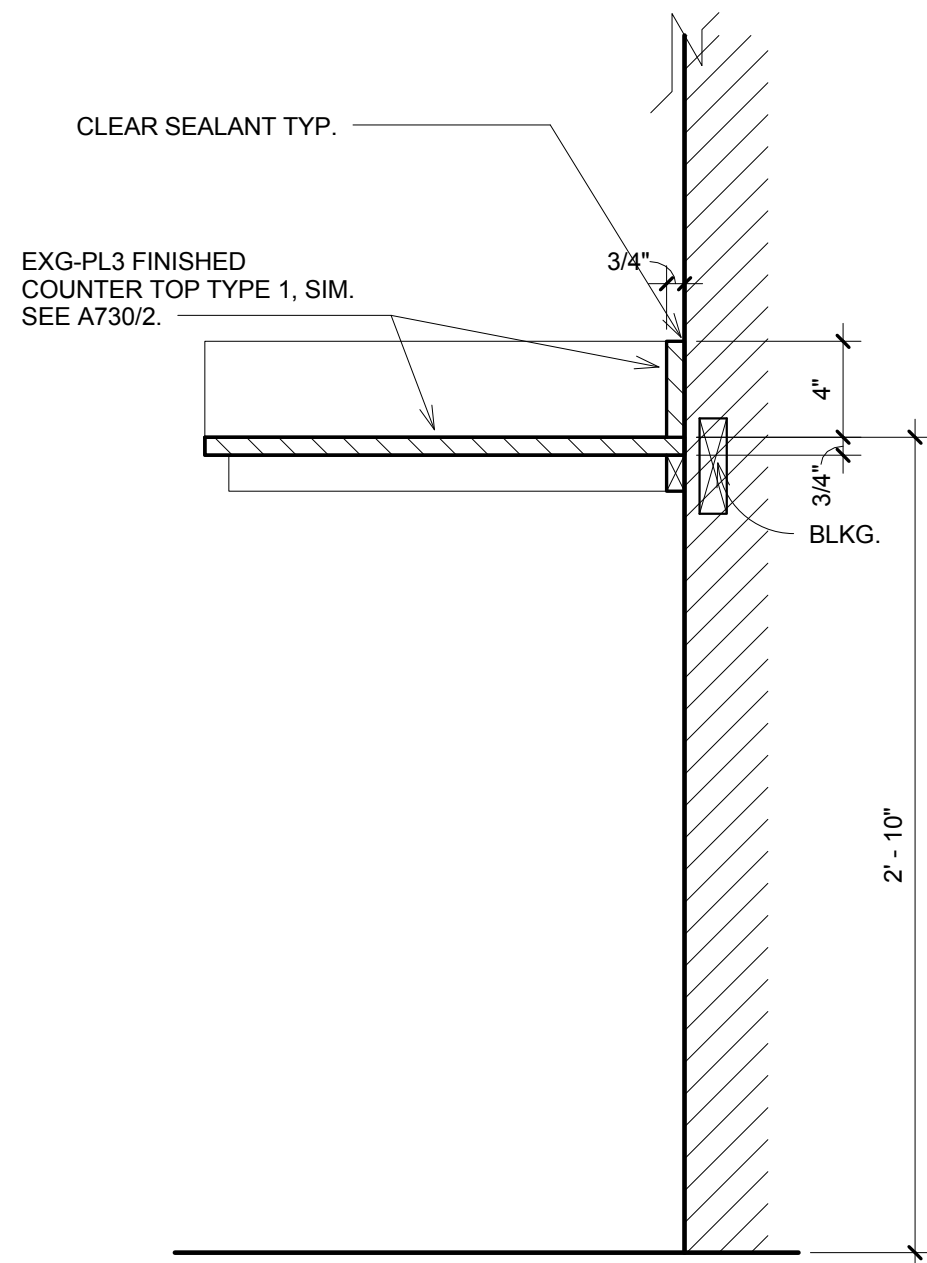
Drawing Title
Casework Details

Phase
Construction Documents

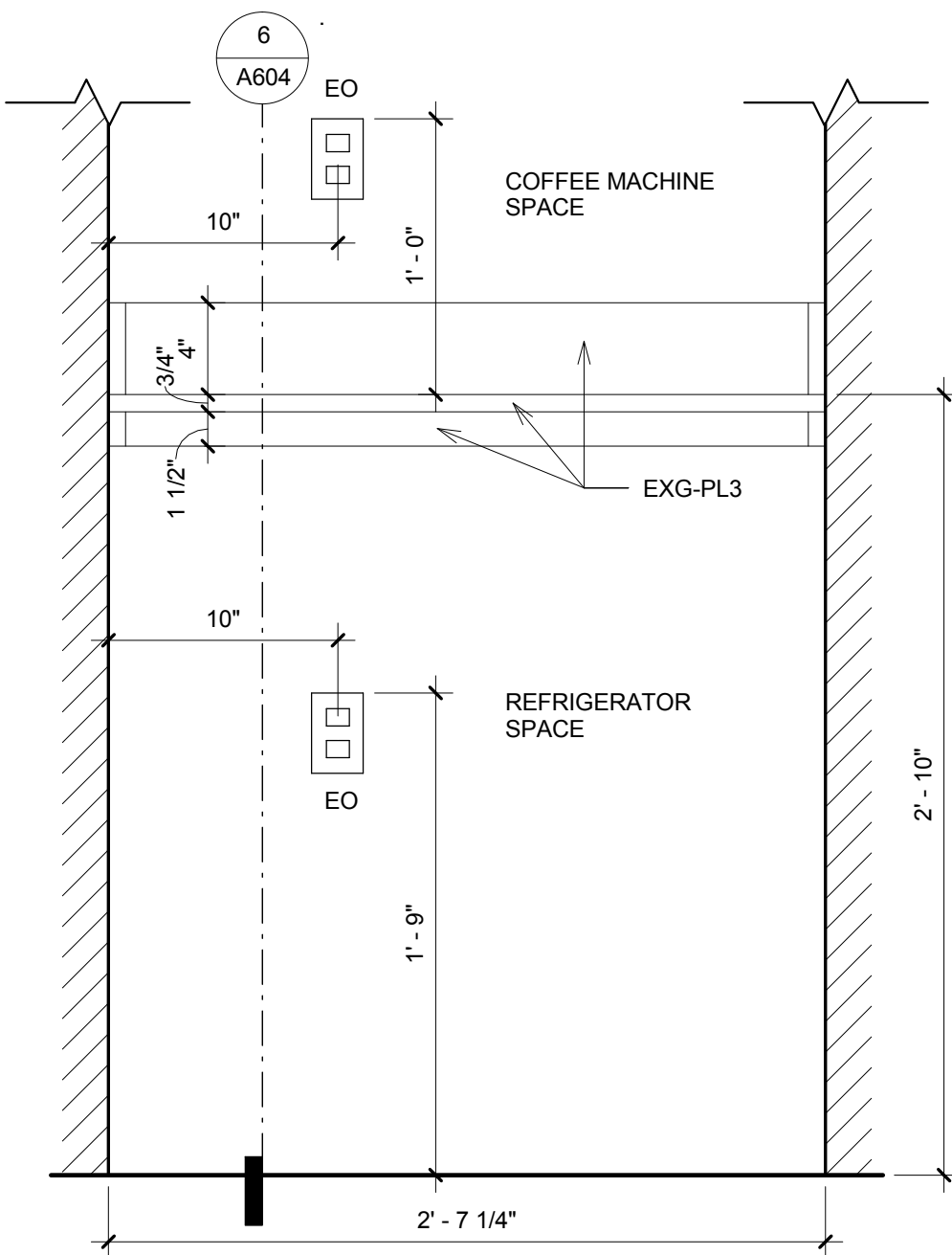
Project No.	14-081	Sheet No.	
Prepared by	Author		
Checked by	Checker		A604
Date	Feb. 27, 2015		

Review

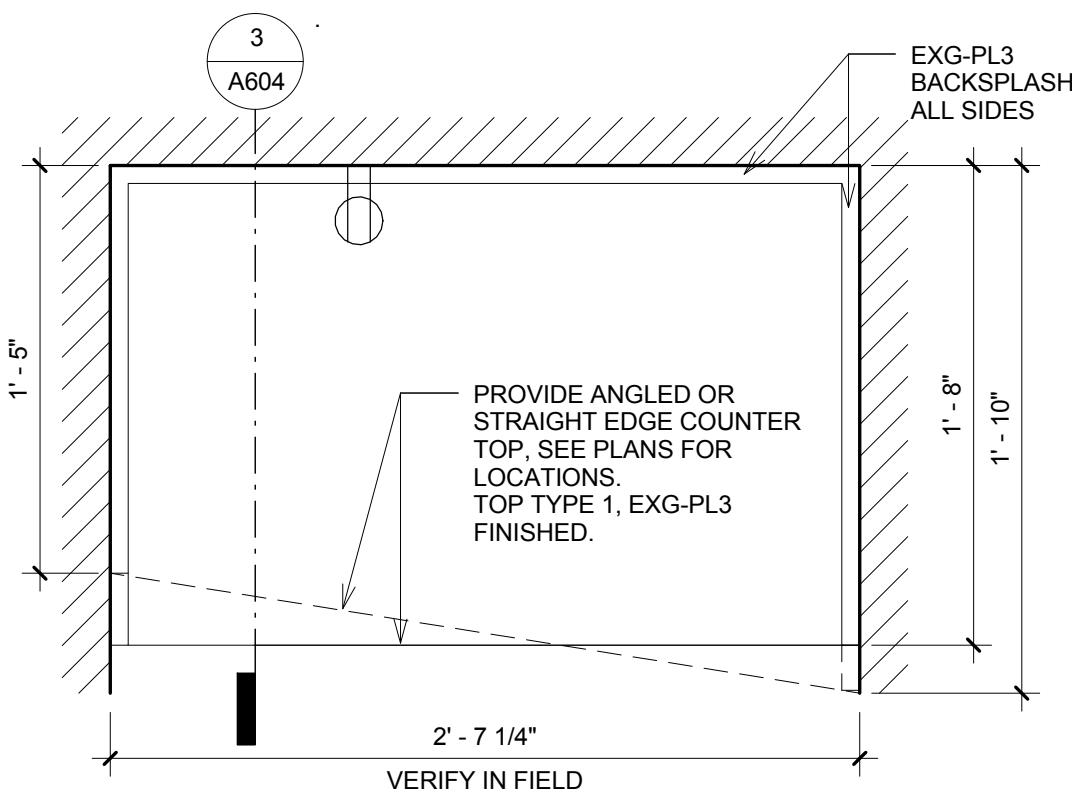
Holiday Inn Express & Suites



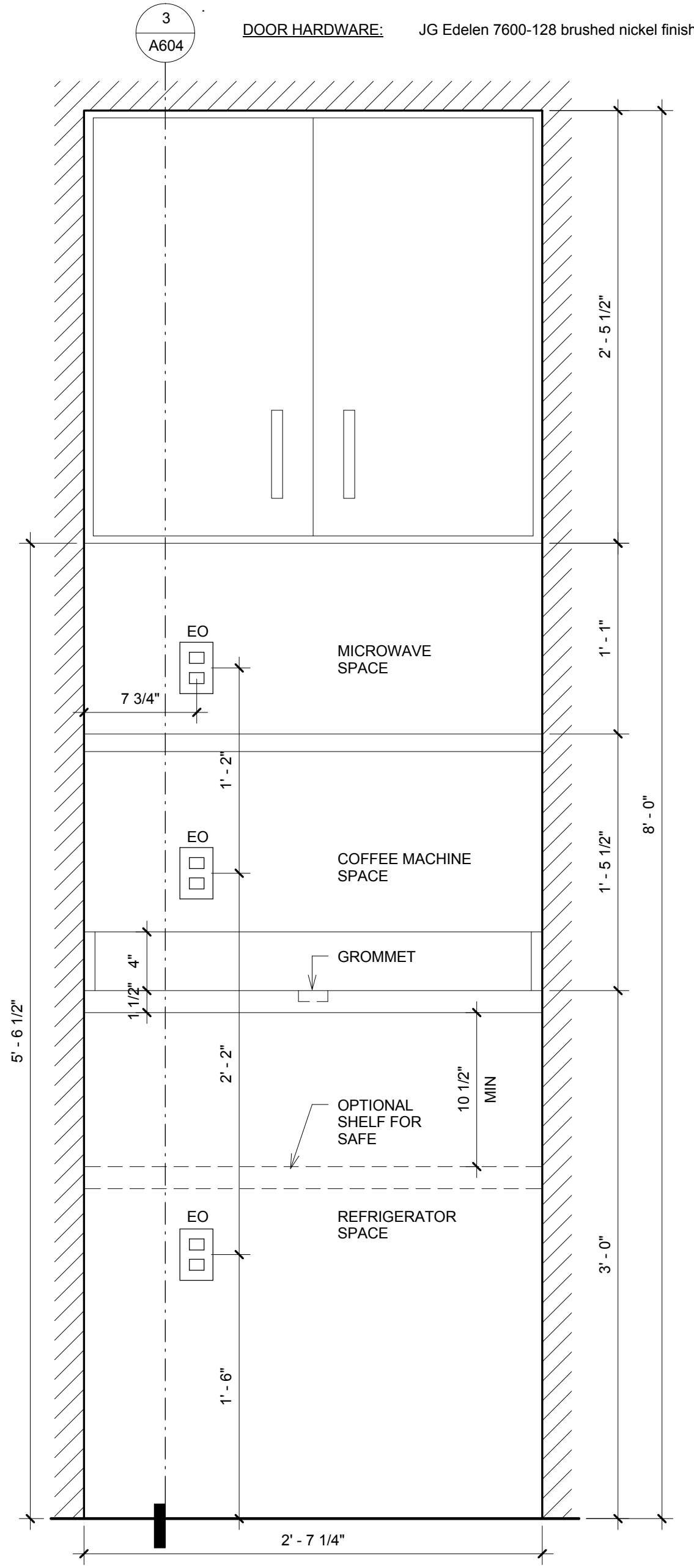
ADA SECTION @ REFRESHMENT COUNTER
1 1/2" = 1'-0"



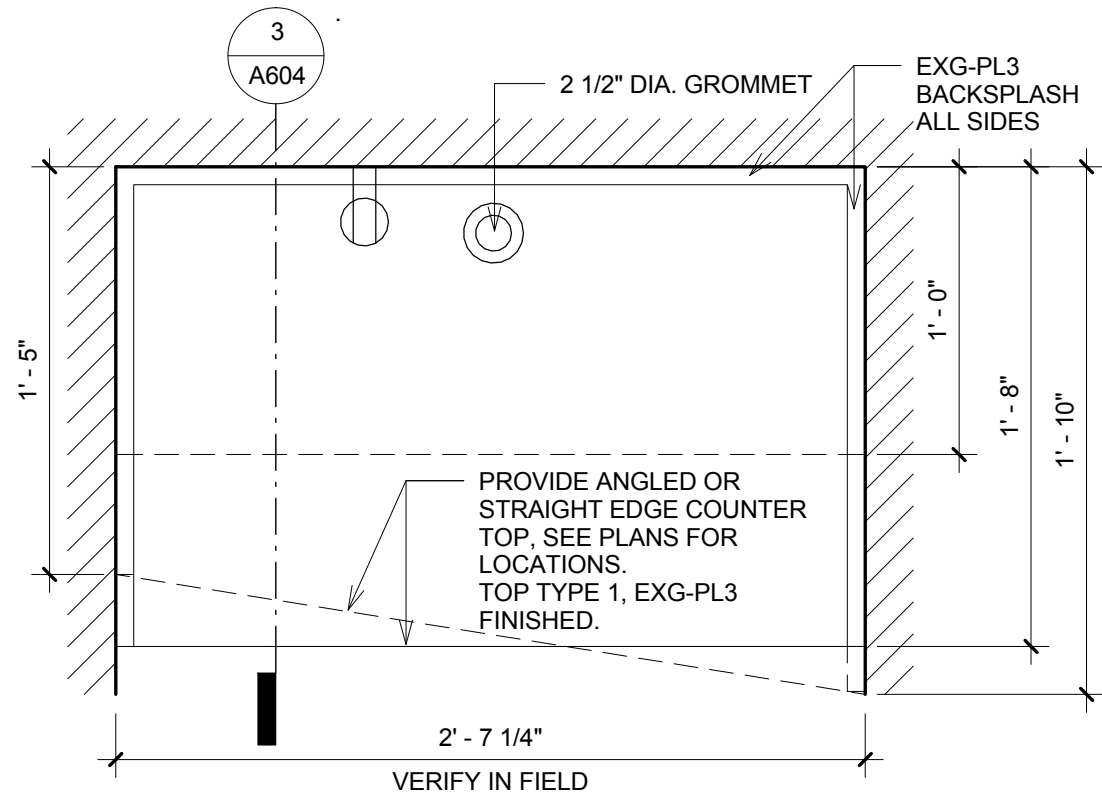
ADA REFRESHMENT COUNTER ELEVATION
1 1/2" = 1'-0"



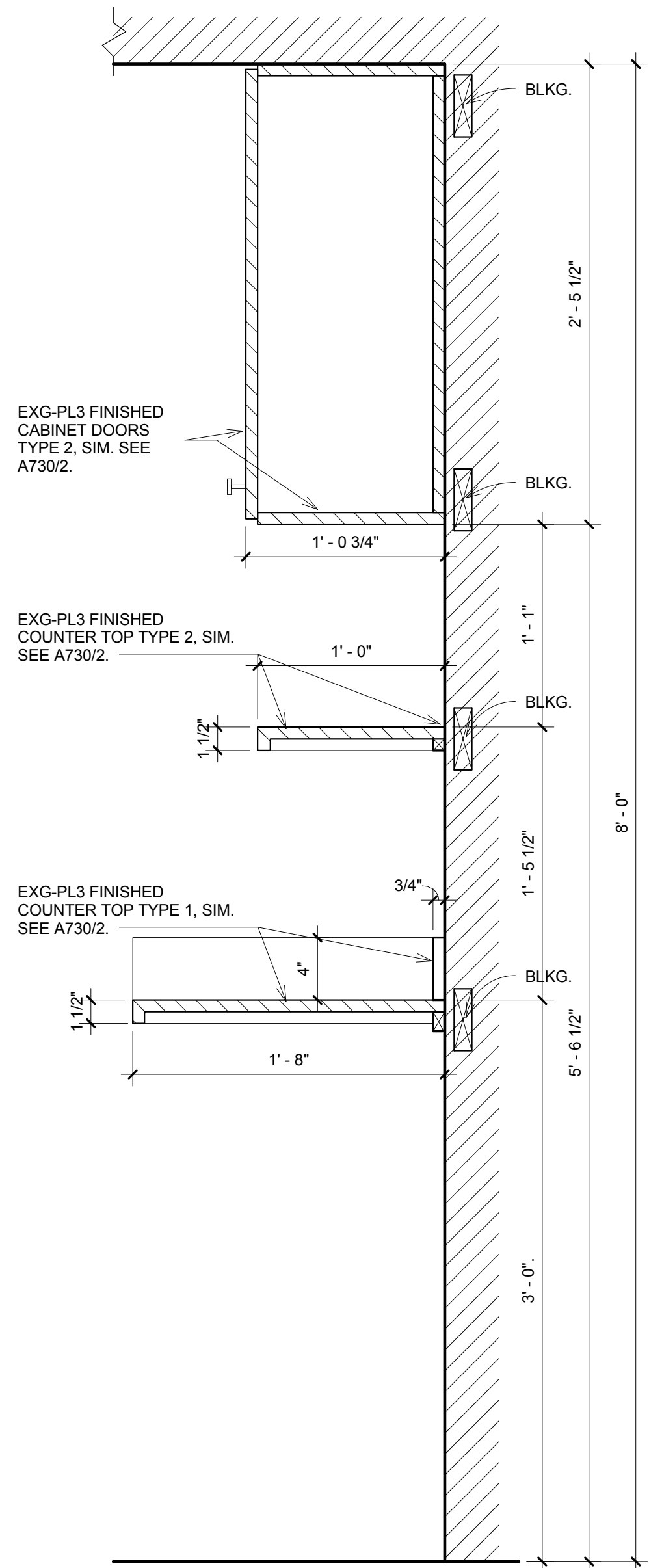
ADA REFRESHMENT COUNTER PLAN
1 1/2" = 1'-0"



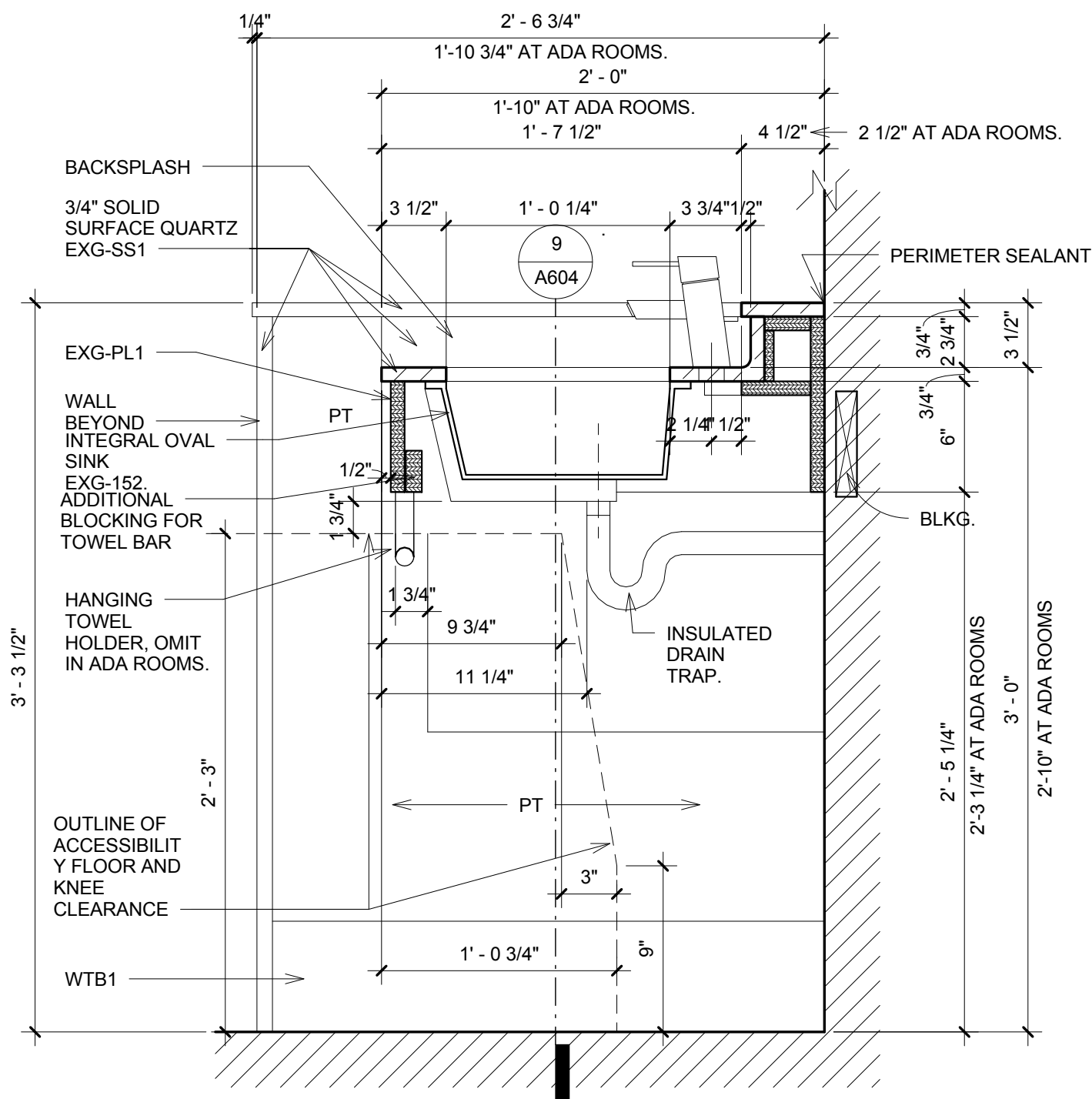
REFRESHMENT CABINET ELEVATION
1 1/2" = 1'-0"



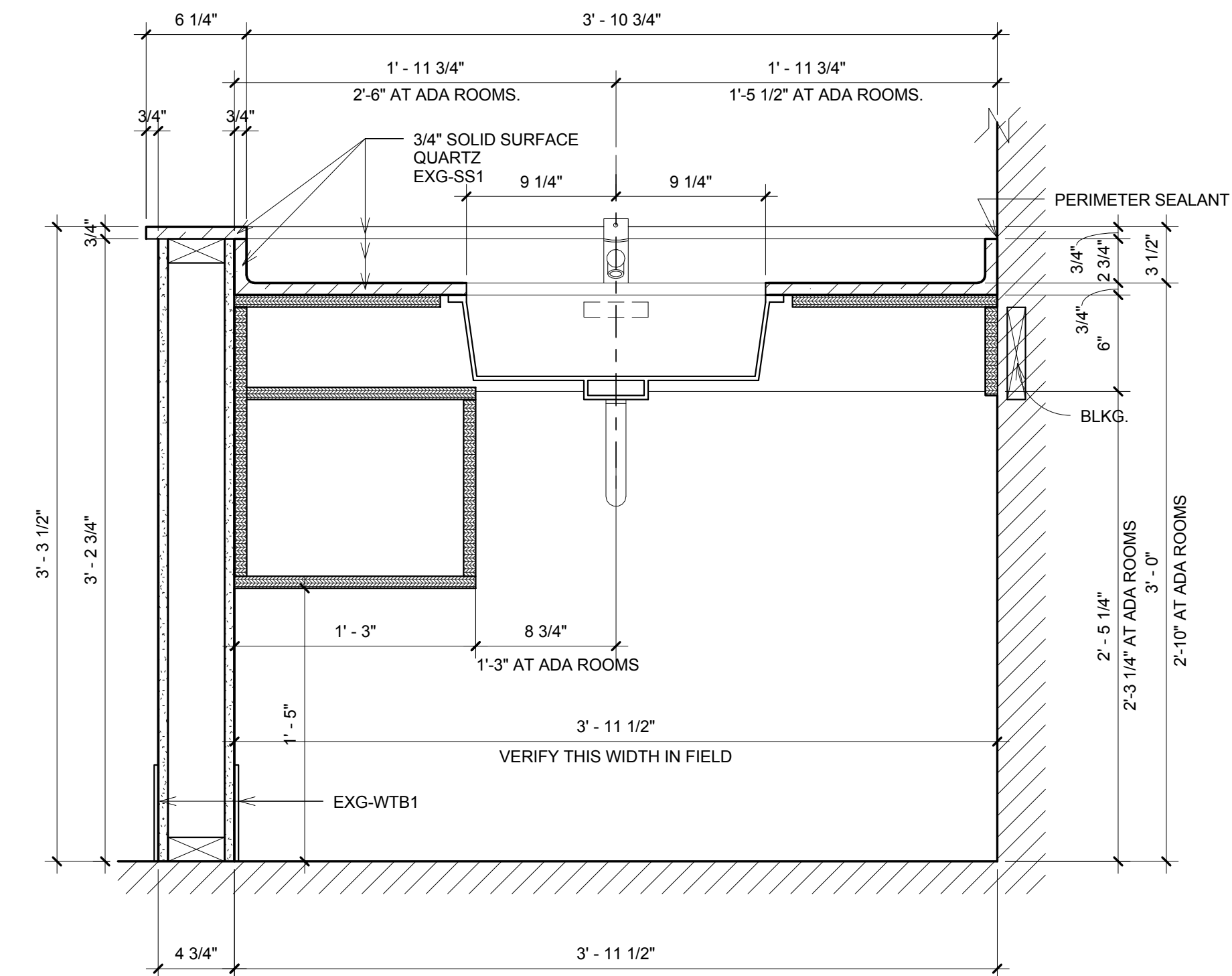
REFRESHMENT CABINET PLAN
1 1/2" = 1'-0"



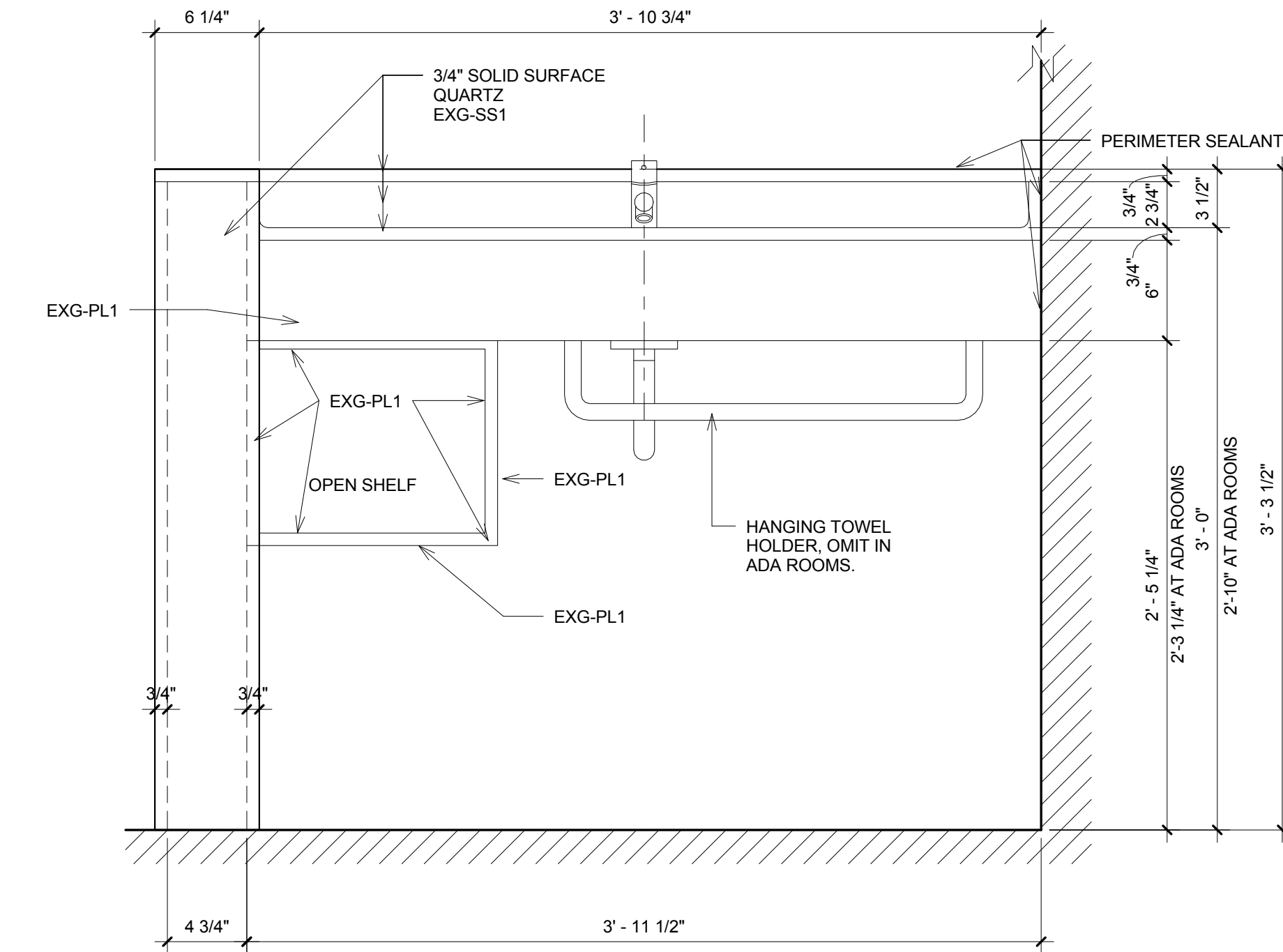
SECTION @ REFRESHMENT CABINET
1 1/2" = 1'-0"



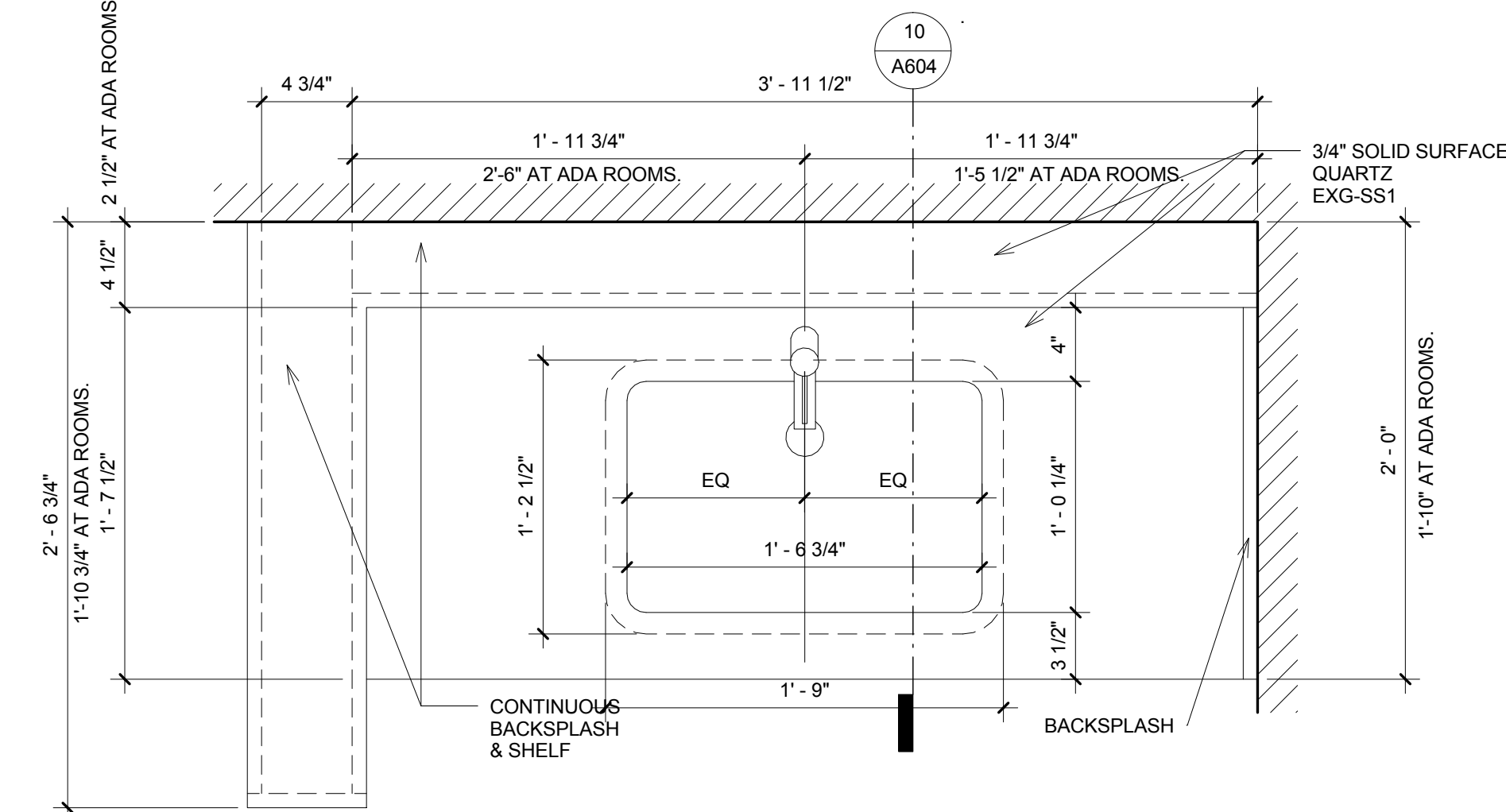
VANITY CABINET SECTION
1 1/2" = 1'-0"



VANITY CABINET SECTION @ WING WALL
1 1/2" = 1'-0"



VANITY CABINET ELEVATION
1 1/2" = 1'-0"



VANITY CABINET PLAN
1 1/2" = 1'-0"