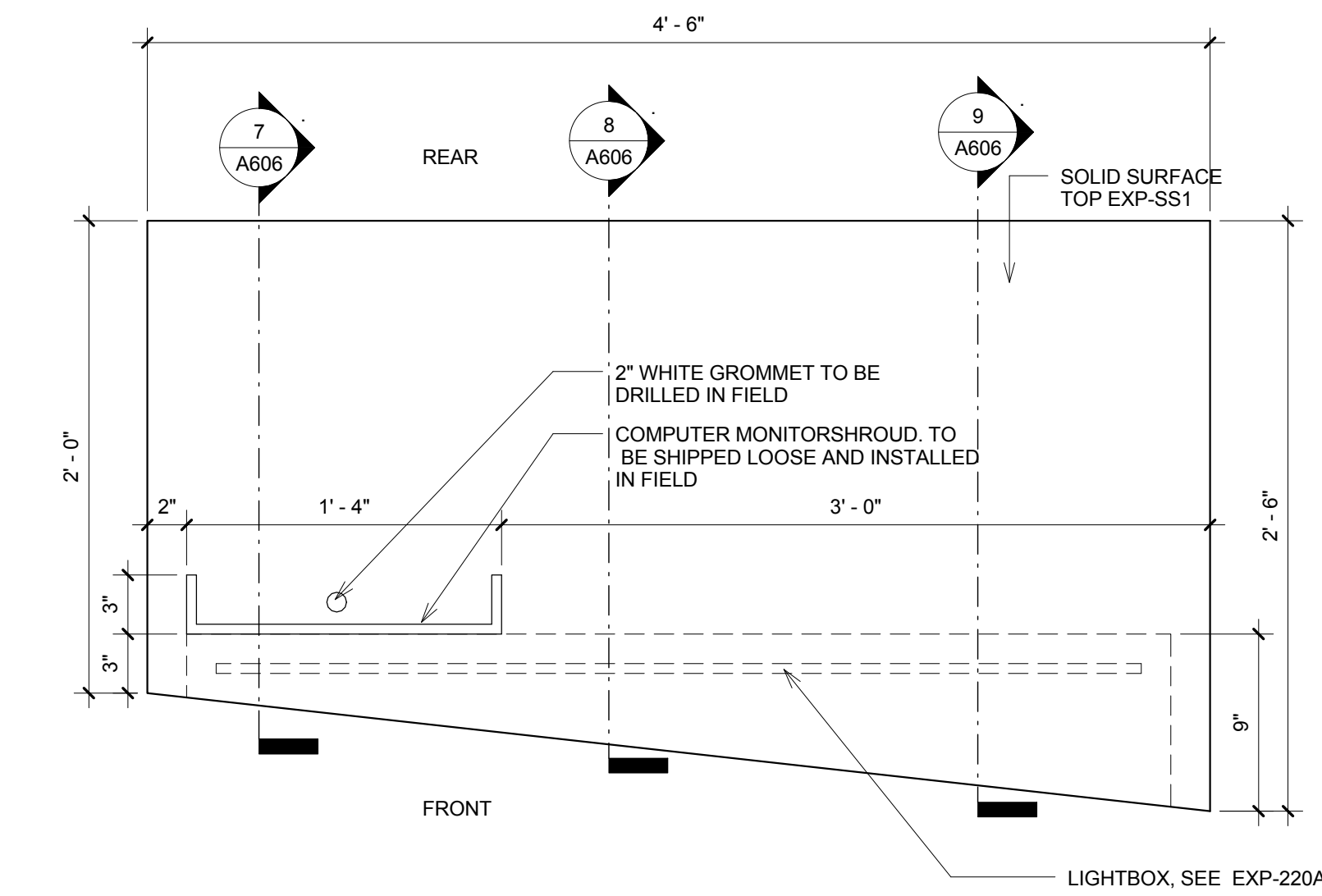


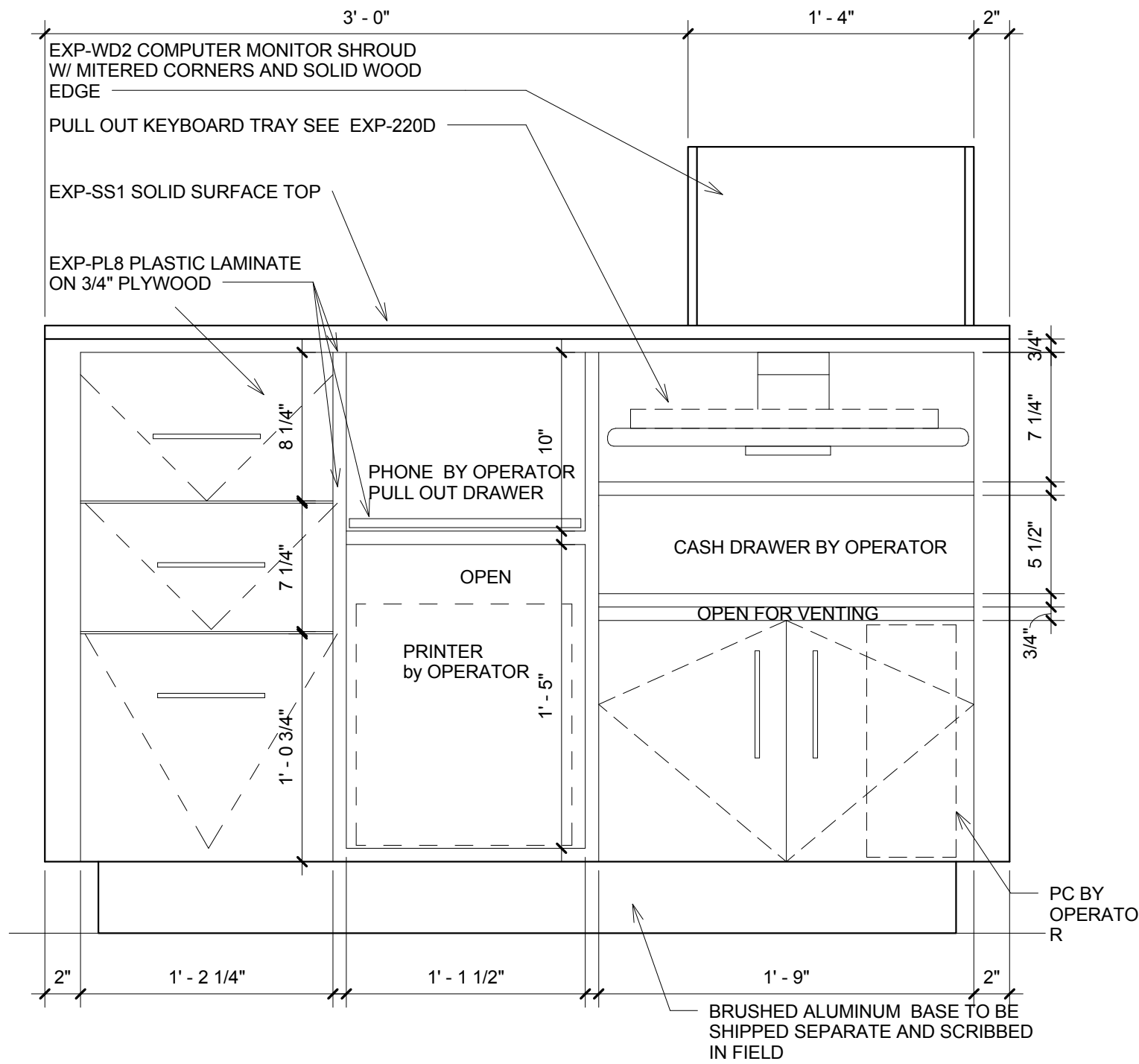
2 COAT PEGS - PLAN DETAIL
1 1/2" = 1'-0"

3 COAT PEGS - FRONT ELEVATION
1 1/2" = 1'-0"

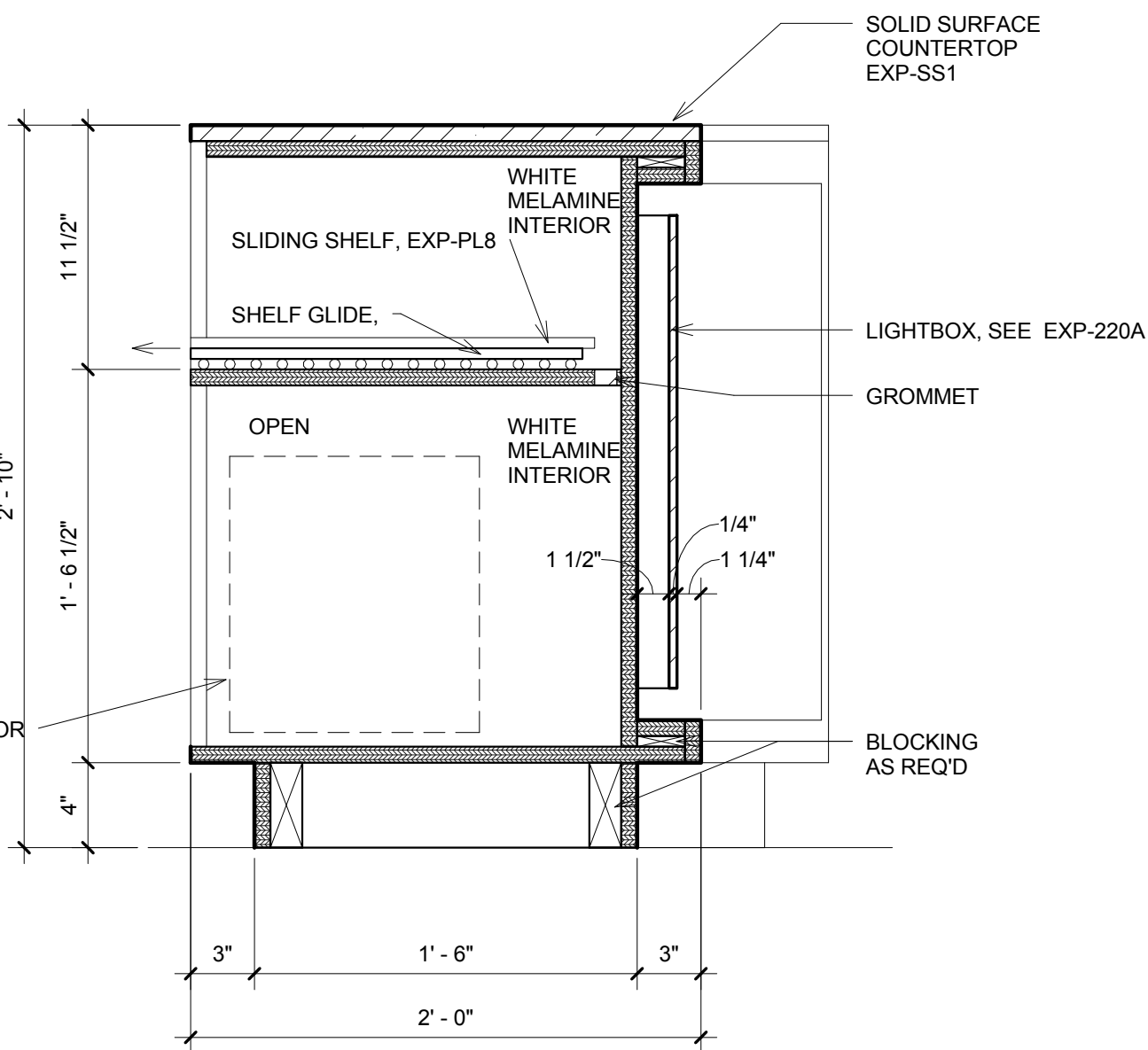
4 COAT PEGS - SECTION
1 1/2" = 1'-0"



6 RECEPTION DESK - REAR ELEVATION
1 1/2" = 1'-0"



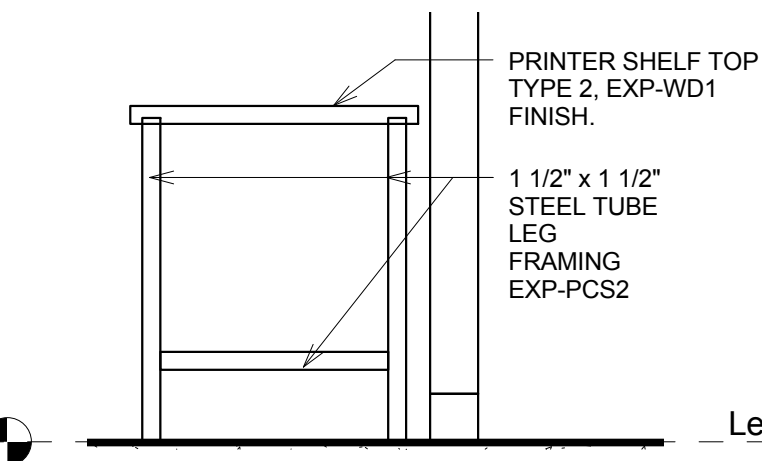
8 RECEPTION DESK - SECTION 2
1 1/2" = 1'-0"



10 RECEPTION DESK - FRONT ELEVATION
1 1/2" = 1'-0"

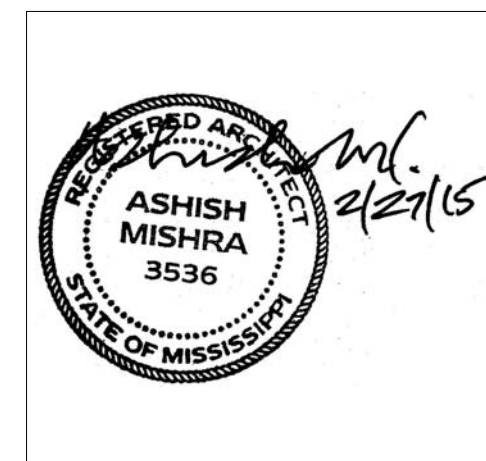
11 Printer Shelf Plan
3/4" = 1'-0"

12 Printer Shelf Section
3/4" = 1'-0"



REVISIONS		
No.	Date	Description

Information contained on this drawing and in all digital files associated is authorized for use on the project named herein only and is the property of MISHRA ARCHITECTURE PLLC and may not be reproduced in any manner without express written or verbal permission from authorized individuals. Original drawing is 24"x36" and scales are as indicated. ©2013 MISHRA ARCHITECTURE PLLC



KEY PLAN

Shiva Southaven Inc.

Holiday Inn Express & Suites

Lot 16 (Rev Lot 3) Southcrest Pkwy.
Southcrest Subdivision
Southaven, MS 38671

Drawing Title
Casework Details

Phase
Construction Documents

Project No.	14-081	Sheet No.	
Prepared by	Author		
Checked by	Checker		A606
Date	Feb. 27, 2015		

Review

Holiday Inn Express & Suites