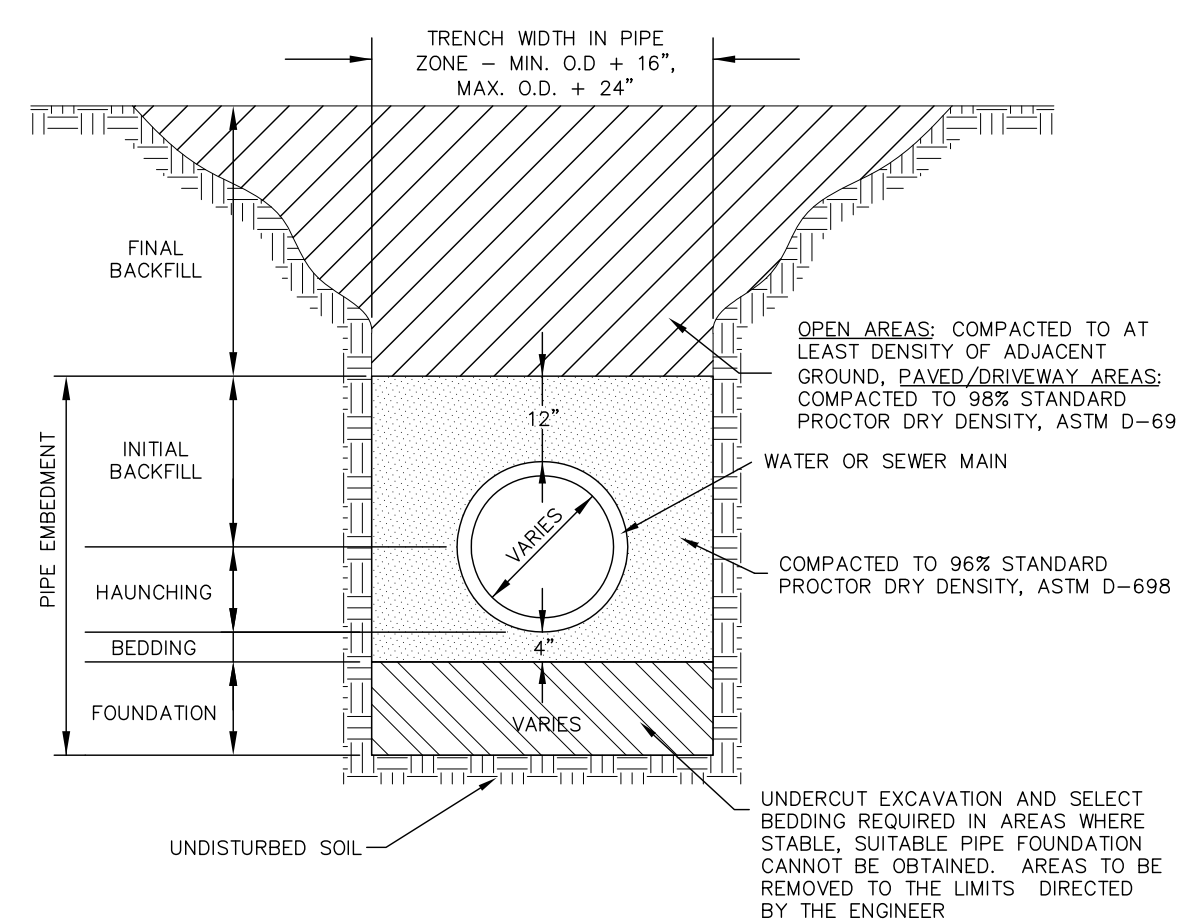
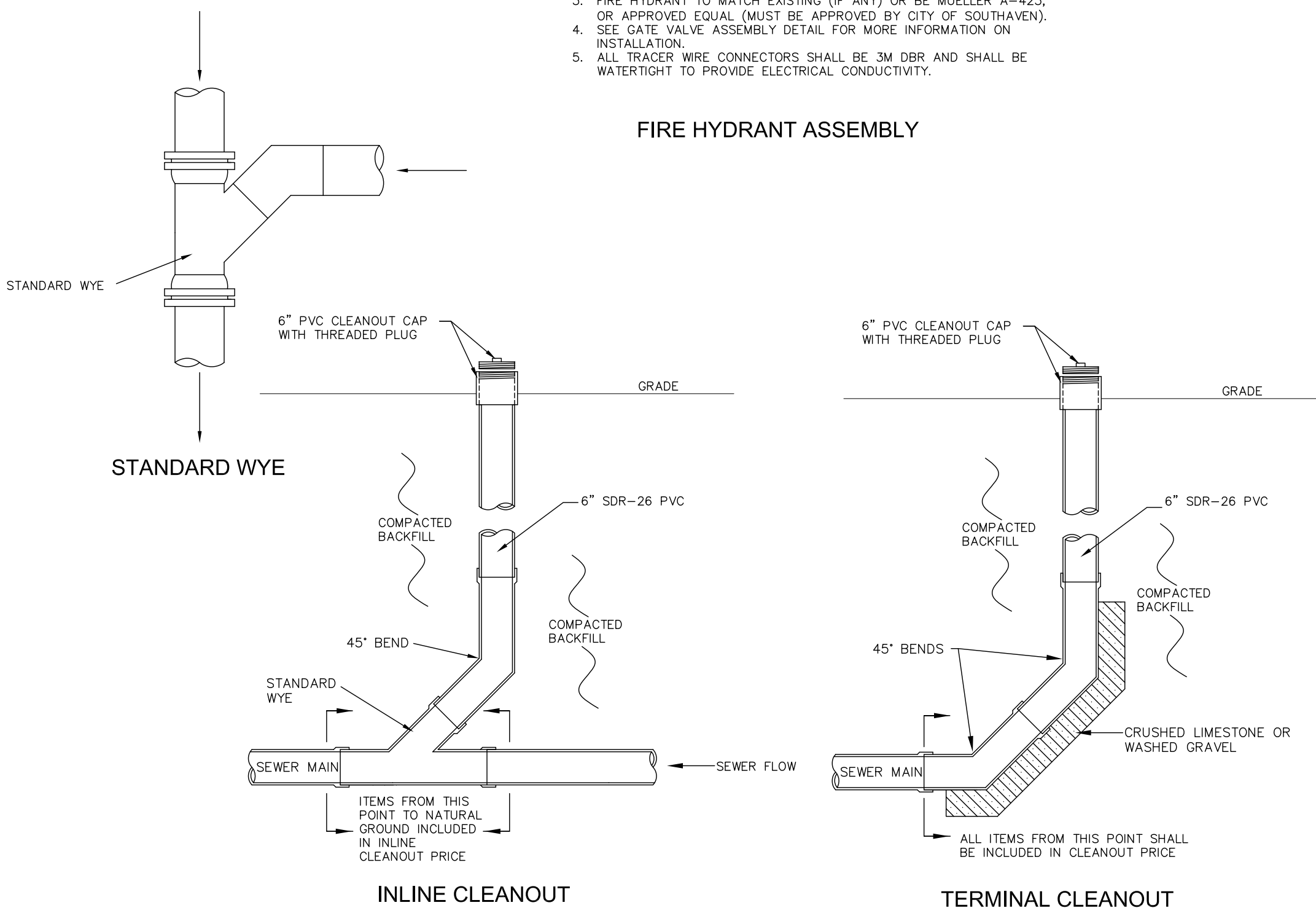
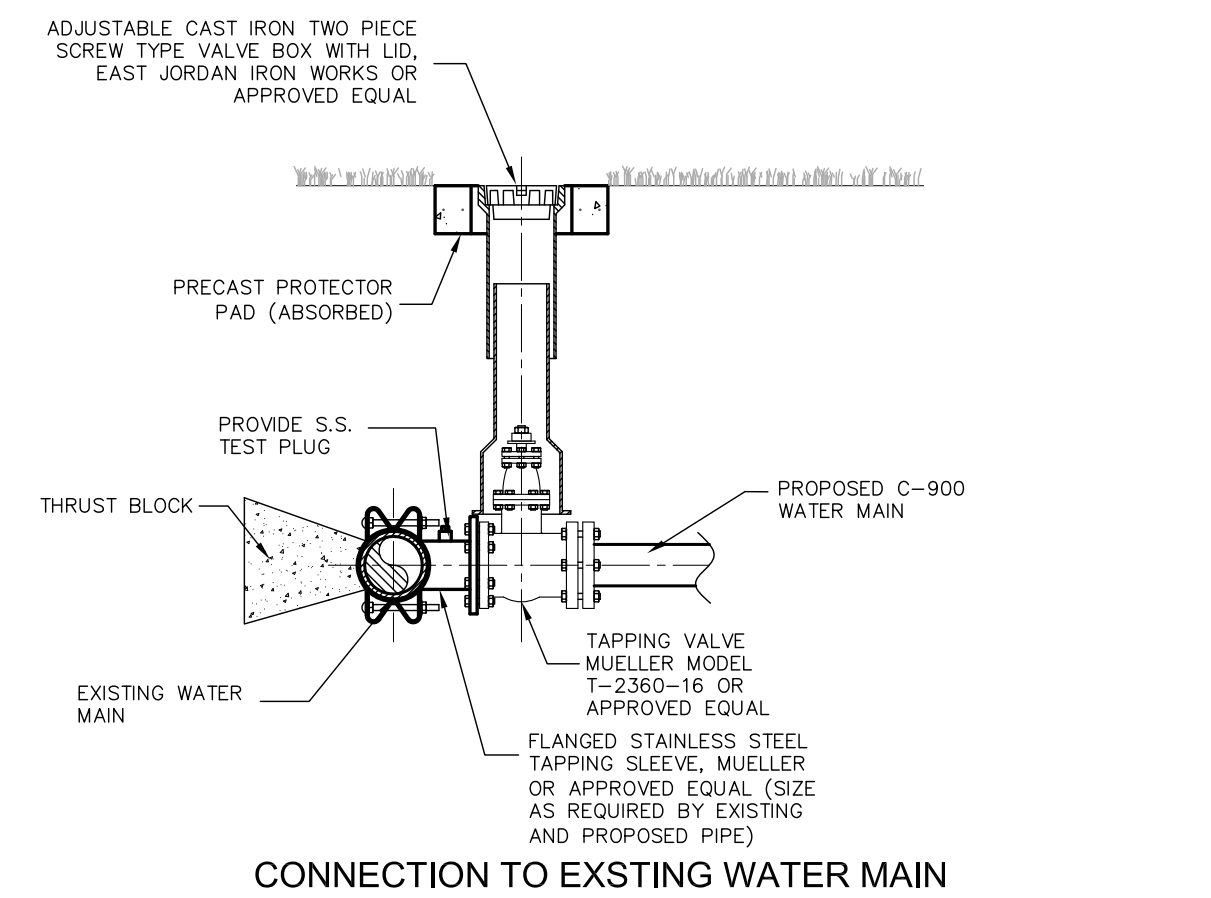
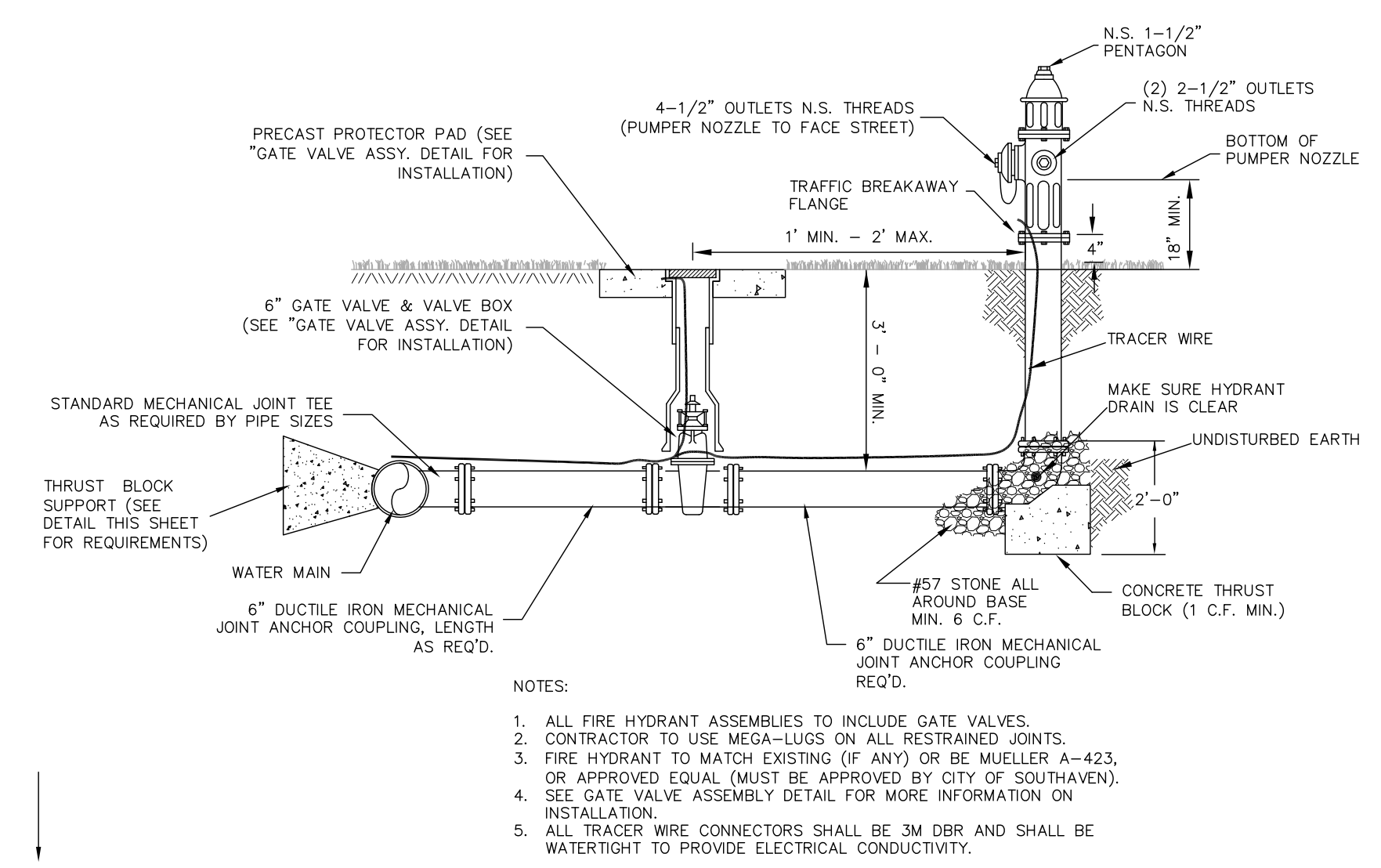
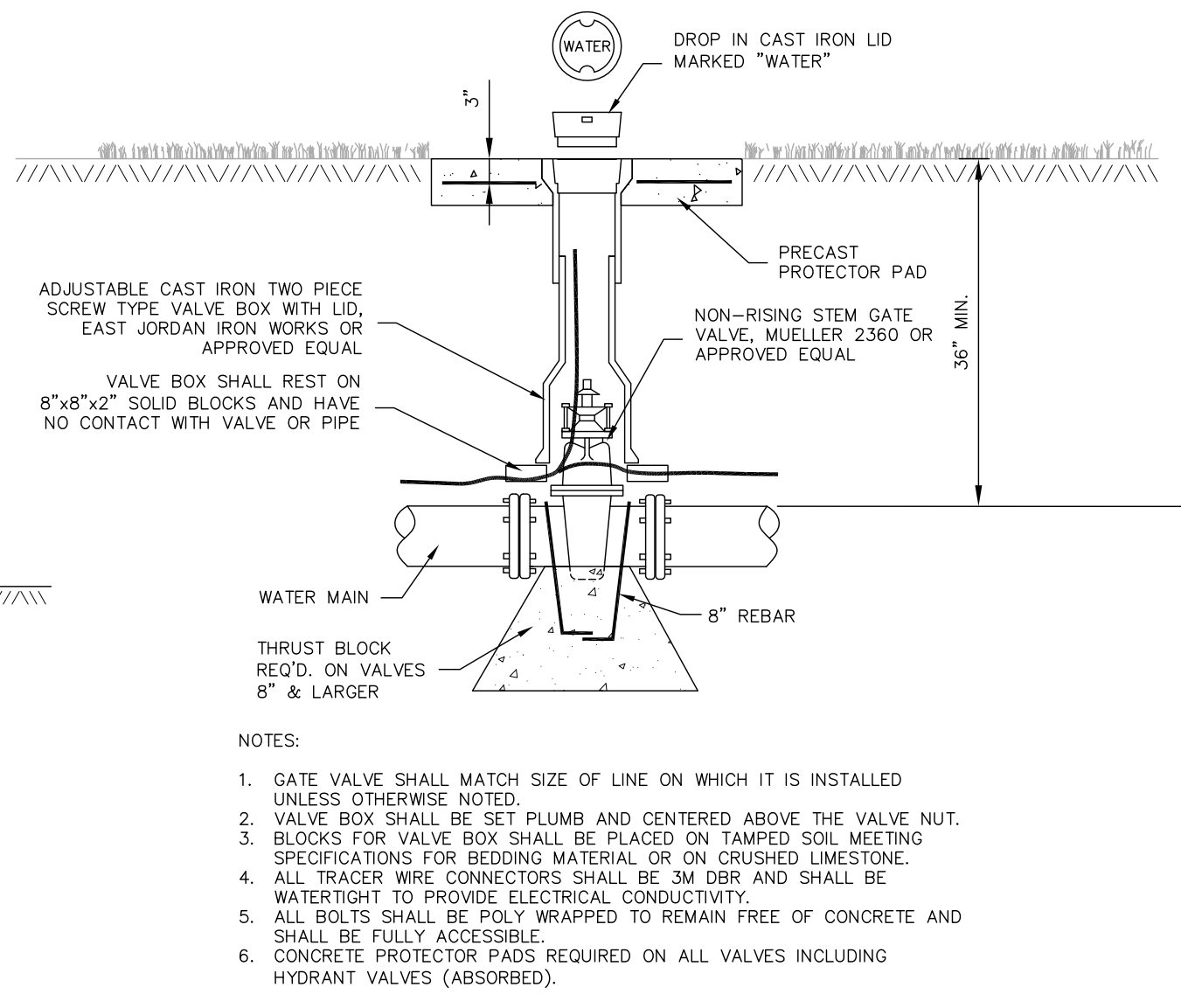
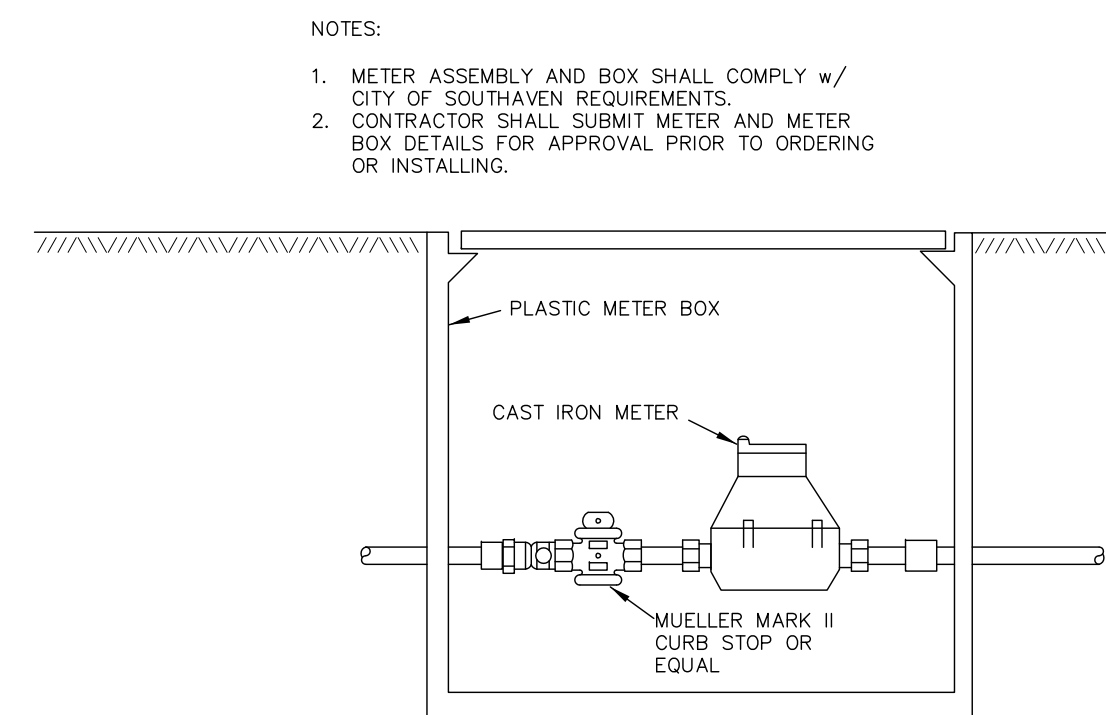
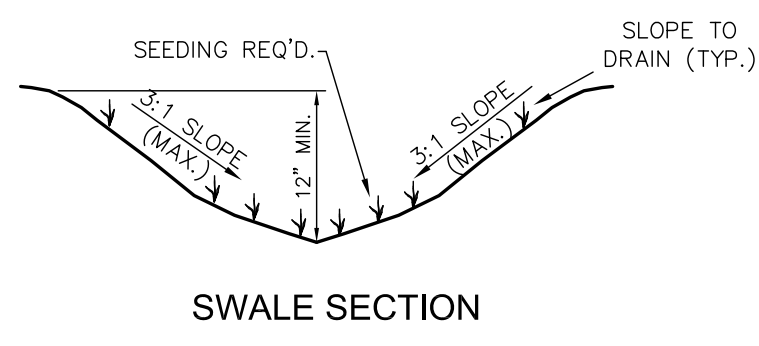
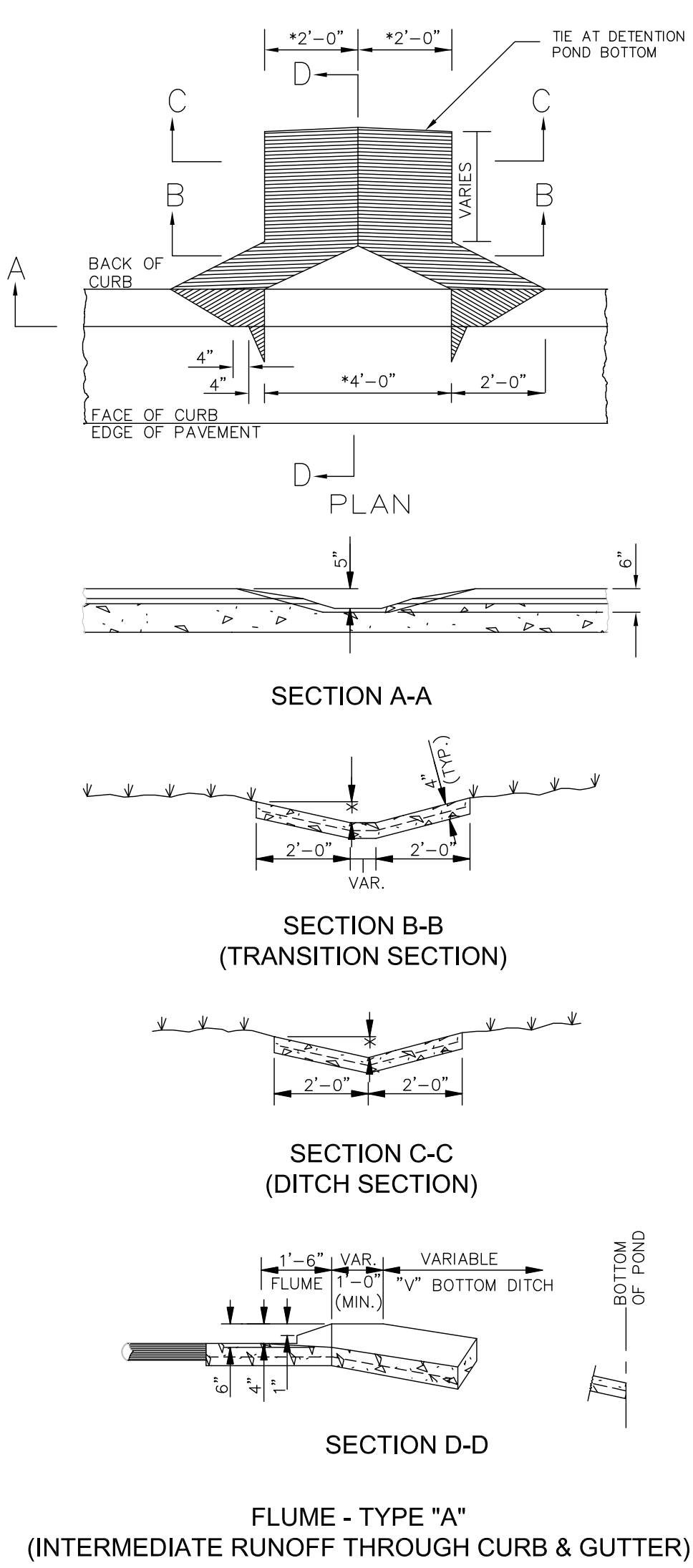
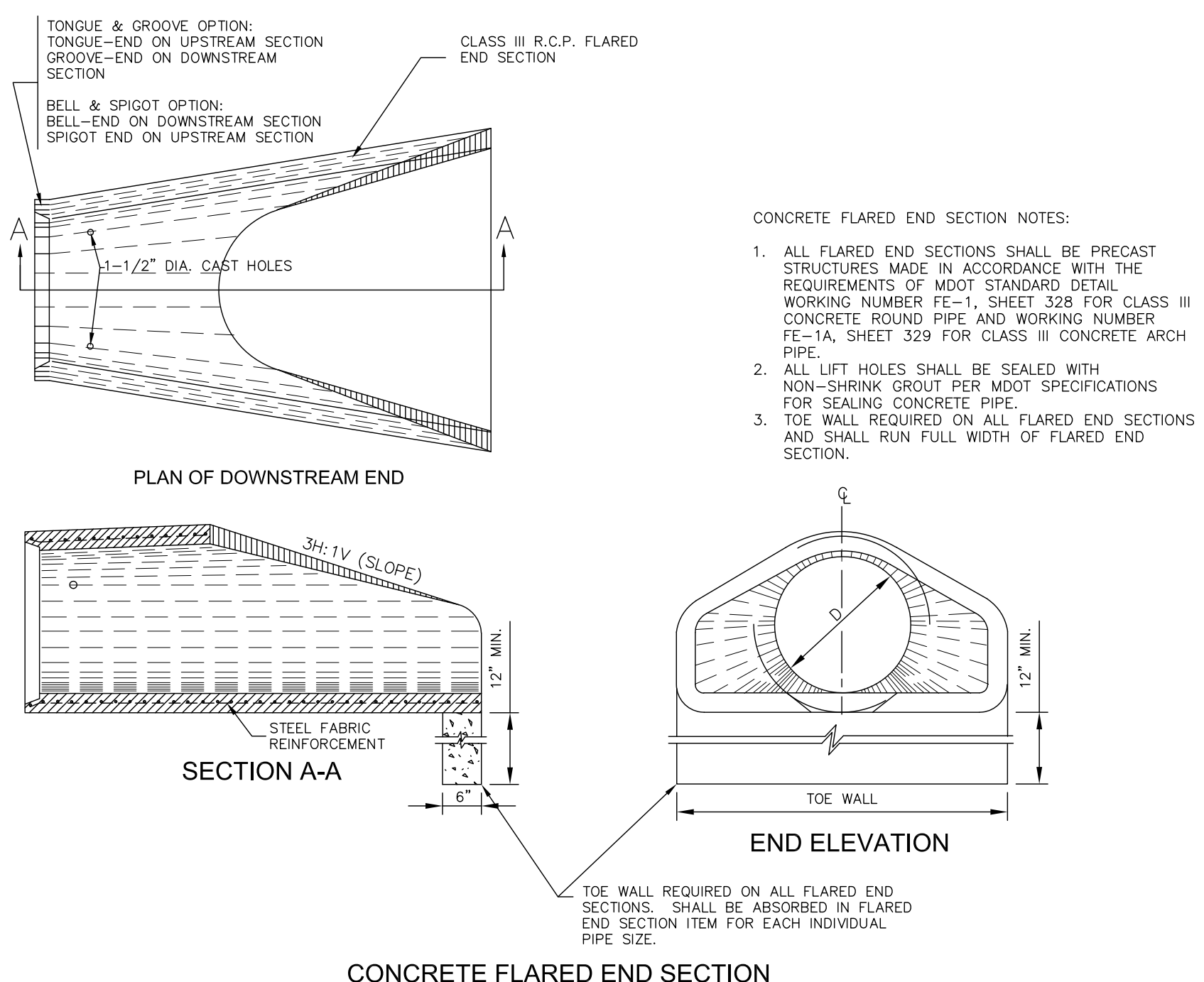
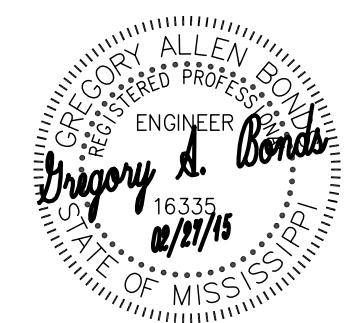


ADS NYLOPLAST BASIN GRATE INLE TINSTALLATION DETAILS



TYPICAL TRENCH NOTES:

1. PIPE EMBEDMENT MATERIALS SHALL COMPLY WITH REQUIREMENTS OF SPECIFICATIONS.
2. FINAL BACKFILL SHALL BE NATIVE MATERIAL IN OPEN AREAS UNLESS OTHERWISE DIRECTED BY THE ENGINEER.
3. FINAL BACKFILL SHALL BE SELECT MATERIAL IN ALL TRENCHES CONSTRUCTED UNDER ROADWAYS, CURBED OR PAVED AREAS. MATERIAL SHALL EXTEND 5' BEYOND THE EDGE OF PAVING STRUCTURE(S).
4. TRENCH SETTLEMENT REPAIR IS THE CONTRACTOR'S RESPONSIBILITY DURING WARRANTY PERIOD.
5. SELECT BEDDING MATERIAL FOR PIPE EMBEDMENT WHICH CONSISTS OF BEDDING, HAUNCHING AND INITIAL BACKFILL ZONES SHALL BE ABSORBED IN THE PER FOOT COST OF THE PIPE.
6. UNDERCUT EXCAVATION MAY BE REQUIRED IF MATERIAL AT PLANNED GRADE WILL NOT PROVIDE STABLE TRENCH BOTTOM FOR PIPE LAYING.
7. FOUNDATION SELECT BEDDING AND UNDERCUT EXCAVATION WILL BE PLACED AS DIRECTED BY THE ENGINEER AND PAID FOR BY THE CUBIC YARD AS NOTED ON THE BID SCHEDULE.



BENCHMARK
Engineering & Surveying, LLC
101 Highpointe Court, Suite B, Brandon, Mississippi 39042
Office: 601-591-1077 Fax: 601-591-0711
E-mail: benchmark@benchmarkms.net

| | | |
|----------------|------------|------------|
| DATE: 02/27/15 | DRAWN: CBA | REVISIONS: |
| CHECKED: GAB | SCALE: | |
| REF: C/L | | |
| EG SURFACE: | | |
| FG SURFACE: | | |

PROJECT LOCATION:
SLEEPY HOLLOW DRIVE
CITY LIMITS OF SOUTHAVEN, MS 38671

CLIENT:
ROY PATEL
FLOWOOD, MS

PROJECT: **HOLIDAY INN EXPRESS**

SHEET CONTENTS:
WATER, SEWER & STORM DRAIN DETAILS

SHEET NUMBER:
C4.0

PROJECT NUMBER:
B-3619