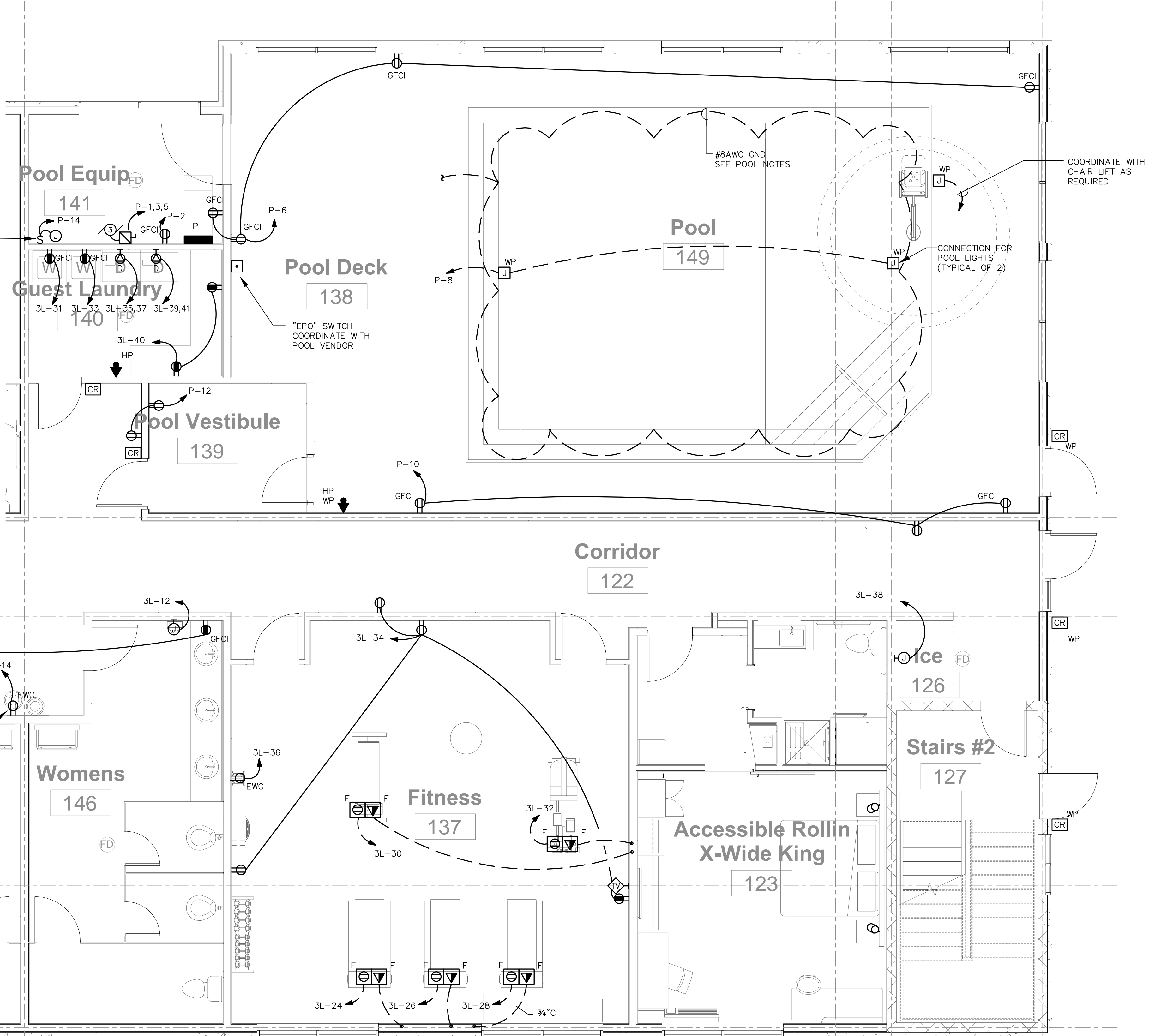


POOL NOTES

- ALL ELECTRICAL EQUIPMENT IN POOL AREA SHALL BE BONDED TOGETHER WITH #8 CU. GND. PER N.E.C. #680-22.
- ALL RECEPTACLES IN POOL AREA WITHIN 10' OF POOL AND IN POOL EQUIPMENT ROOM SHALL BE WEATHERPROOF G.F.C.I. TYPE.
- ELECTRICAL INSTALLATION IS TO BE IN COMPLIANCE WITH ARTICLE 680 OF THE N.E.C.
- THE FOLLOWING ITEMS ARE REQUIRED TO BE BONDED WITH INSULATED #8 COPPER WIRE, OR AS OTHERWISE REQUIRED BY THE N.E.C. OR EQUIPMENT MANUFACTURERS:
 - ALL METALLIC PARTS OF THE POOL STRUCTURE, INCLUDING REINFORCING STEEL, IN ALL CONCRETE SLABS.
 - UNDERWATER LIGHT FIXTURES, INCLUDING FORMING SHELLS, MOUNTING BRACKETS AND JUNCTION BOXES AS REQUIRED.
 - HANDRAILS.
 - LADDERS.
 - PUMP MOTORS, FOR ALL POOLS AND THE SLIDE.
 - WINDOW FRAMES, WHERE NOTED.
 - LIGHT FIXTURES ABOVE THE POOL OR SPA AND WITHIN 5 FEET HORIZONTALLY OF THE POOL OR SPA WALLS.
 - ALL METAL PARTS ASSOCIATED WITH THE SLIDE AND THE SPRAY AREA.
 - ANY OTHER METALLIC PARTS REQUIRED BY THE N.E.C.
- THE FOLLOWING ITEMS ARE REQUIRED TO BE GROUNDED WITH INSULATED #12 COPPER WIRE MINIMUM, OR AS OTHERWISE REQUIRED BY THE N.E.C. OR EQUIPMENT MANUFACTURERS:
 - UNDERWATER LIGHTING FIXTURES.
 - ALL ELECTRIC EQUIPMENT WITHIN 5'-0" OF THE POOL OR SPA.
 - ALL ELECTRIC EQUIPMENT ASSOCIATED WITH THE CIRCULATION SYSTEM OF THE POOL OR SPA.
 - JUNCTION BOXES.
 - TRANSFORMER ENCLOSURES.
 - PANELBOARDS SUPPLYING POWER TO ANY EQUIPMENT ASSOCIATED WITH THE POOL OR SPA.
 - GROUND FAULT INTERRUPT CIRCUITS.
- GROUNDED FOR POOL AND SPA LIGHTS AND FOR PUMP MOTORS IS TO BE IN CONDUIT.
- ALL UNDERWATER LIGHT FIXTURES MUST BE SUBMERGED BEFORE BEING OPERATED.
- UNDERWATER LIGHT FIXTURES MUST BE REMOVABLE FROM THE WATER FOR RELAMPING OR NORMAL MAINTENANCE WITHOUT REQUIRING DRAINAGE OF THE POOL.
- NICHE LIGHT FIXTURES SHALL BE SUPPLIED WITH CORDS WHICH ARE 50 FEET LONG, EXCEPT AS NOTED. CONDUIT RUNS FROM EACH NICHE TO THE APPROPRIATE CONNECTION POINT (DECK BOX, SUBMERSIBLE JUNCTION BOX, ETC.) MUST BE AS DIRECT AS POSSIBLE AND A TOTAL LENGTH SHORTER THAN THE CORD WHEN PROPERLY INSTALLED. TO PROPERLY INSTALL FIXTURE AND CORD, LEAVE ENOUGH CORD IN THE NICHE SO THAT WHEN SERVICING IS REQUIRED THE FIXTURE CAN BE LIFTED ABOVE WATER LEVEL WITHOUT DRAINING THE POOL (WRAP EXTRA CORD LENGTH AROUND THE FIXTURE WHEN PLACING IN NICHE).
- WHEN RESEALING A FIXTURE (SUCH AS AFTER RELAMPING, ETC.) CARE MUST BE TAKEN TO TIGHTEN THE SCREWS OR BOLTS IN SUCH A FASHION AS TO CREATE EQUAL PRESSURE ON THE GASKET ALL THE WAY AROUND THE FIXTURE.
- ALL THREADED CONNECTIONS MUST BE MADE WITH NATIONAL TAPERED PIPE THREADS (N.P.T.) AND APPROVED THREAD SEALANT.
- AN APPROVED POTTING COMPOUND (LOW MELTING PARAFFIN OR RTV SILASTIC) MUST BE USED TO FILL THE ENTRY OF THE JUNCTION BOX TO PREVENT MOISTURE MIGRATION INTO THE CONDUIT. AFTER POTTING THE JUNCTION BOX, ATTACH THE COVER PLATE SO THAT IT IS WATERTIGHT.
- ALL METALLIC PIPING SYSTEMS ASSOCIATED WITH THE POOL MUST BE BONDED TO THE EQUIPMENT GROUNDING CONDUCTOR OF THE BRANCH CIRCUIT SUPPLYING THE POOL.
- UNDERWATER TYPE SO AND ST CORD CANNOT BE SPLICED EXCEPT IN AN APPROVED UNDERWATER JUNCTION BOX OR UL LISTED UNDERWATER SPLICE KIT.
- MAXIMUM EXPOSED CORD LENGTH IS 10 FEET. ANY LENGTH BEYOND 10 FEET MUST BE PROTECTED BY CONDUIT.
- THE CONDUIT SYSTEM MUST BE WATERTIGHT FROM THE PANEL TO THE POOL.
- ALL CONDUITS EXPOSED TO MOISTURE (BELOW GROUND, IN THE POOL, ETC.) MUST BE OF A NON-CORROSIBLE MATERIAL.



1 ENLARGED PUBLIC AREA PLAN - POWER
E303 SCALE: 1/4" = 1'-0"

ALLIED
CONSULTING ENGINEERS
2905-D Queen City Dr.
Charlotte, NC 28208
P: (704) 399-3943 F: (704) 394-5648
www.allied-engineers.com
Allied #14417

MISHRA
ARCHITECTURE PLLC
6800 S Creek Rd, Charlotte, NC 28277
Ph: (704) 625-6554 Fax: (704) 919-5822
EMAIL: ashish@mishraarch.com
WEB: www.mishraarch.com

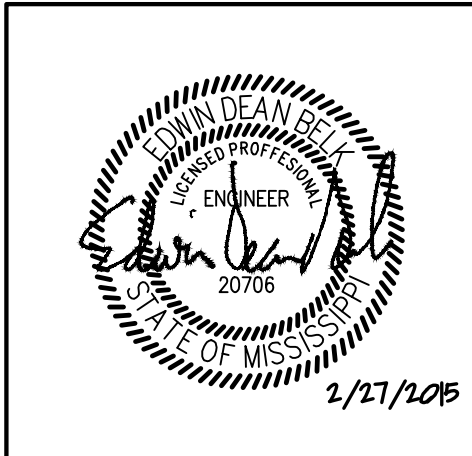
CIVIL:
Benchmark Engineering and Surveying
101 Highpointe Court, Suite B
Brandon, MS 39042
Phone: (601) 591-1077
Fax: (601) 591-0177
Email: mikes@bellsouth.net

STRUCTURAL:
WGPM, Inc.
11220 Elm Lane, Suite 201
Charlotte, NC 28277
Phone: (704) 542-7199
Fax: (704) 542-7195
Email: lwright@wgpmnc.com

MEP:
Allied Consulting Engineers
2905-D Queen City Drive
Charlotte, NC 28208
Phone: (704) 399-3943
Email: asoler@allied-engineers.com

REVISIONS		
No.	Date	Description
1		

Information contained on this drawing and in all digital files associated is authorized for use on the project named herein only and is the property of MISHRA ARCHITECTURE PLLC and may not be reproduced in any manner without express written or verbal permission from authorized individuals. Original drawing is 24"x36" and scales are as indicated. ©2013 MISHRA ARCHITECTURE PLLC



KEY PLAN

Shiva Southaven Inc.

Holiday Inn Express & Suites

Lot 16 (Rev Lot 3) Southcrest Pkwy.
Southcrest Subdivision
Southaven, MS 38671

Drawing Title

ENLARGED PUBLIC AREA PLAN - POWER

Phase

Construction Documents

Project No. 14-081

Prepared by MAH

Checked by EDB

Date Feb. 27, 2015

Sheet No.

E303

Holiday Inn Express & Suites