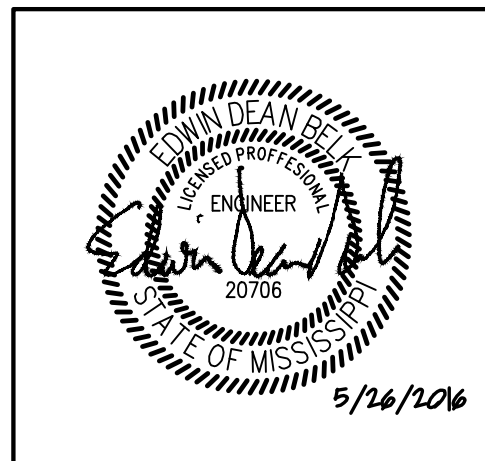


REVISIONS		
No.	Date	Description
1	4/6/16	Overflow Drains
2	5/26/16	Owner Changes

Information contained on this drawing and in all digital files associated is authorized for use on the project named herein only and is the property of MISHRA ARCHITECTURE PLLC and may not be reproduced in any manner without express written or verbal permission from authorized individuals. Original drawing is 24"x36" and scales are as indicated. ©2013 MISHRA ARCHITECTURE PLLC



KEY PLAN

Shiva Southaven Inc.

Holiday Inn Express & Suites

Lot 16 (Rev Lot 3) Southcrest Pkwy.
Southcrest Subdivision
Southaven, MS 38671

Drawing Title
ENLARGED GUESTROOM PLANS

Phase
Construction Documents

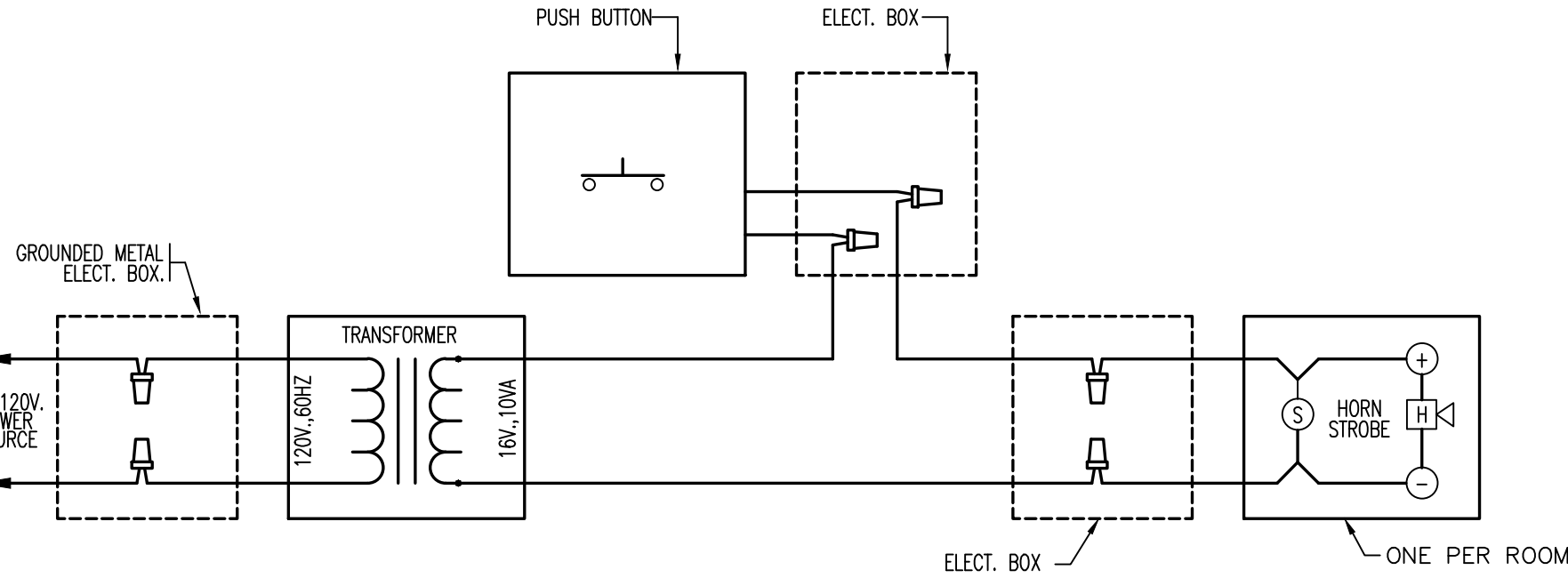
Project No.	14-081	Sheet No.	E304
Prepared by	MAH		
Checked by	EDB		
Date	Feb. 27, 2015		

GUESTROOM GENERAL NOTES:

- CONTRACTOR SHALL COORDINATE WITH ARCHITECT AND OWNER FOR EXACT LOCATIONS AND MOUNTING HEIGHTS FOR ALL DEVICES PRIOR TO ELECTRICAL ROUGH-IN.
- SEE 1/8 SCALE PLANS FOR CIRCUIT NUMBERS. CONTRACTOR SHALL REFER TO PANEL SCHEDULES AND RISER DIAGRAM.
- AT WALLS BETWEEN ADJACENT ROOMS, ELECTRICAL OUTLET LOCATIONS, INCLUDING TV AND TELEPHONE OUTLETS, SHALL BE OFFSET 6" MIN. HORIZONTALLY FOR INSTALLATION. ELECTRICAL CORDS SHOULD BE HIDDEN FROM VIEW. BACK TO BACK OUTLETS ARE **NOT** ALLOWED.
- LIGHT SWITCH AND GFCI OUTLETS CAN BE MOUNTED IN A COMMON BOX WITH COVER PLATE. COORDINATE CLEARANCE WITH MIRROR.
- HEIGHT OF ALL SWITCHES, OUTLETS, ETC., TO MEET ACCESSIBILITY STANDARDS FOR MAXIMUM AND MINIMUM REACH RANGE. FEDERAL AND LOCAL CODES APPLY AND THE MOST STRINGENT STANDARD PREVAILS. SWITCHES ON LAMPS MUST BE TOGGLE TYPE.
- ELECTRICAL OUTLETS AT DESKS ARE TO BE COORDINATED WITH FRANCHISE STANDARDS. DEPENDING ON FF&E PROVIDED, CERTAIN OUTLETS MAY NOT BE REQUIRED.
- CEILING MOUNTED LIGHT FIXTURE AND EXHAUST FAN AT ALL GUESTROOM BATHROOMS TO BE SWITCHED SEPARATELY. CONTRACTOR SHALL COORDINATE WITH MECHANICAL FOR EXACT LOCATIONS AND REQUIREMENTS PRIOR TO ELECTRICAL ROUGH-IN.
- HEARING IMPAIRED ROOMS SHALL BE EQUIPPED WITH ACCESSIBLE DEVICES SUCH AS, BUT NOT LIMITED TO THE FOLLOWING: FIRE ALARM STROBES, SMOKE DETECTOR STROBES AND DOOR BUZZER STROBES. TELEPHONES WITH VOLUME CONTROLS COMPATIBLE WITH THE PHONE SYSTEM. ALSO PROVIDE DOORBELL ON/OFF SWITCH WITH SIGNAGE AS REQUIRED.
- AT ALL ADA AND HEARING IMPAIRED ROOMS:
 - 177CD FIRE ALARM HORN/STROBE IN ROOM.
 - FIRE ALARM STROBE IN BATH ROOM.
 - SYSTEM, PHOTOELECTRIC SMOKE DETECTORS ON CEILING.
- ALL NON-ADA GUESTROOMS:
 - SYSTEM, PHOTOELECTRIC SMOKE DETECTORS ON CEILING.
 - MINI-HORN ON WALL.
- ALL GUESTROOMS SHALL HAVE 70DBA MINIMUM AT PILLOW.
- PTAC - PREFERRED MANUFACTURERS AS REFERENCED IN BRANDS STANDARDS MANUAL OR APPROVED EQUAL MUST BE PROVIDED.
- ALL CONTROLS FOR USE BY GUESTS MUST BE MOUNTED AT BETWEEN 15" AFF AND 48" AFF AND PROVIDE A 30" X 48" FLOOR AREA IN COMPLIANCE WITH ACCESSIBILITIES STANDARDS. OPERABLE CONTROLS LOCATED OVER AN OBSTRUCTION DEEPER THAN 10" MUST BE MOUNTED NO HIGHER THAN 46" AFF. ACCESSIBLE CONTROLS MUST NOT REQUIRE TIGHT GRASPING, PINCHING OR TWISTING OF THE WRIST.
- IN ACCESSIBLE ROOMS, AT LEAST ONE OUTLET AND DATA CONNECTION FOR USE BY GUESTS MUST BE MOUNTED BETWEEN 15" AND 48" AFF AND PROVIDE A CLEAR FLOOR AREA IN COMPLIANCE WITH ACCESSIBLE STANDARDS.
- OBJECTS MOUNTED WITHIN THE CIRCULATION PATH IN ACCESSIBLE ROOMS BETWEEN 27" AND 80" AFF SHALL NOT PROTRUDE FURTHER THAN 4" FROM WALL.
- ALL GUESTROOM LIGHT FIXTURES TO HAVE WARM WHITE, INSTANT START, FLICKER FREE, 2700K LAMPS.
- ALL GUESTROOM LOW VOLTAGE WIRING MUST BE INSTALLED IN CONDUIT FROM ROOMS TO THE ACCESSIBLE CEILING IN CORRIDOR. THIS INCLUDES CATV, HSIA, AND TELEPHONE WIRING. MOUNT ALL MICROWAVE RECEPTACLES ABOVE COUNTER. ALL REFRIGERATOR RECEPTACLES SHALL BE MOUNTED UNDER COUNTER. COORDINATE WITH OWNER FOR EXACT MOUNTING HEIGHT PRIOR TO ELECTRICAL ROUGH-IN.
- CONTRACTOR TO COORDINATE WITH FIRE ALARM CONTRACTOR THE LOCATION OF 120V UNIT SMOKE/CO DETECTORS AND PROVIDE CONNECTION APPROPRIATELY.
- AT ALL HEARING IMPAIRED ROOMS:
 - PROVIDE AUDIBLE/VISUAL DOORBELL/ANNUNCIATOR EQUIVALENT TO EDWARDS MODEL 7005-G5 WITH EDWARDS MODEL 620 PUSHBUTTON.
 - 177CD FIRE ALARM HORN/STROBE IN ROOM.
 - FIRE ALARM STROBE IN BATH ROOM.
 - AUDIBLE/VISUAL DOORBELL IN BATHROOM.

ALL 120 VOLT, 15 AND 20 AMP RECEPTACLES IN DWELLING UNITS SHALL BE TAMPER RESISTANT PER NEC 2011 SECTION 406.13.

ELECTRICAL OUTLET HEIGHTS (U.N.O.)
TYPICAL WALL OUTLET - 12" A.F.F.
TYPICAL ACCESSIBLE WALL OUTLET - 18" A.F.F.
BATHROOM VANITY OUTLET - 48" A.F.F.
GUESTROOM STUDIO WET BAR - 48" A.F.F.
TYPICAL KITCHEN OUTLET - 42" A.F.F.
ACCESSIBLE KITCHEN OUTLET - 46" A.F.F. MAX.
ACCESSIBLE BATHROOM VANITY OUTLET - 44" A.F.F. MAX.

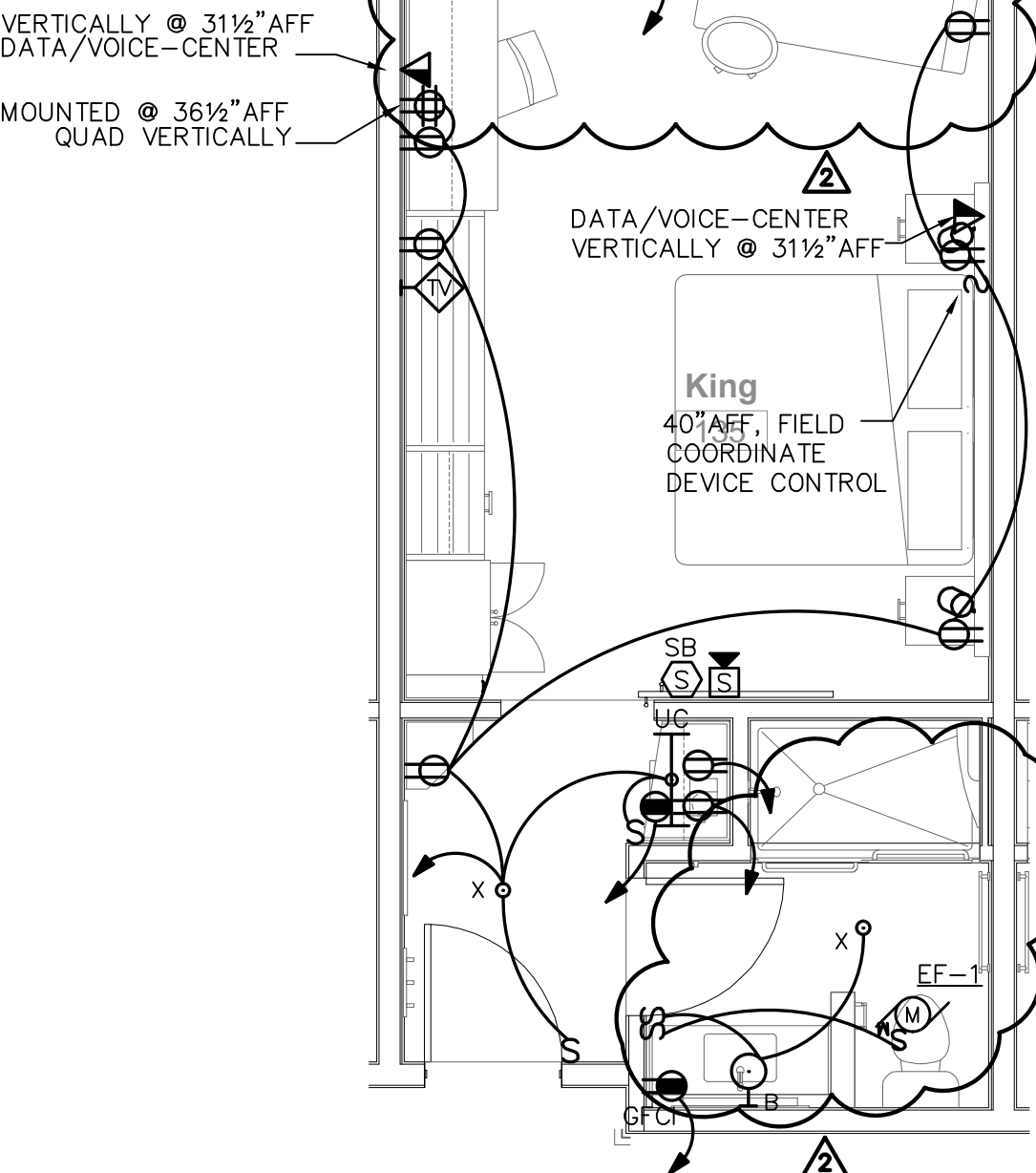


NOTES:
1. SEE ARCHITECTURAL PLANS FOR LOCATIONS OF DEVICES. COORDINATE THE LOCATIONS OF DEVICES WITH ARCHITECT

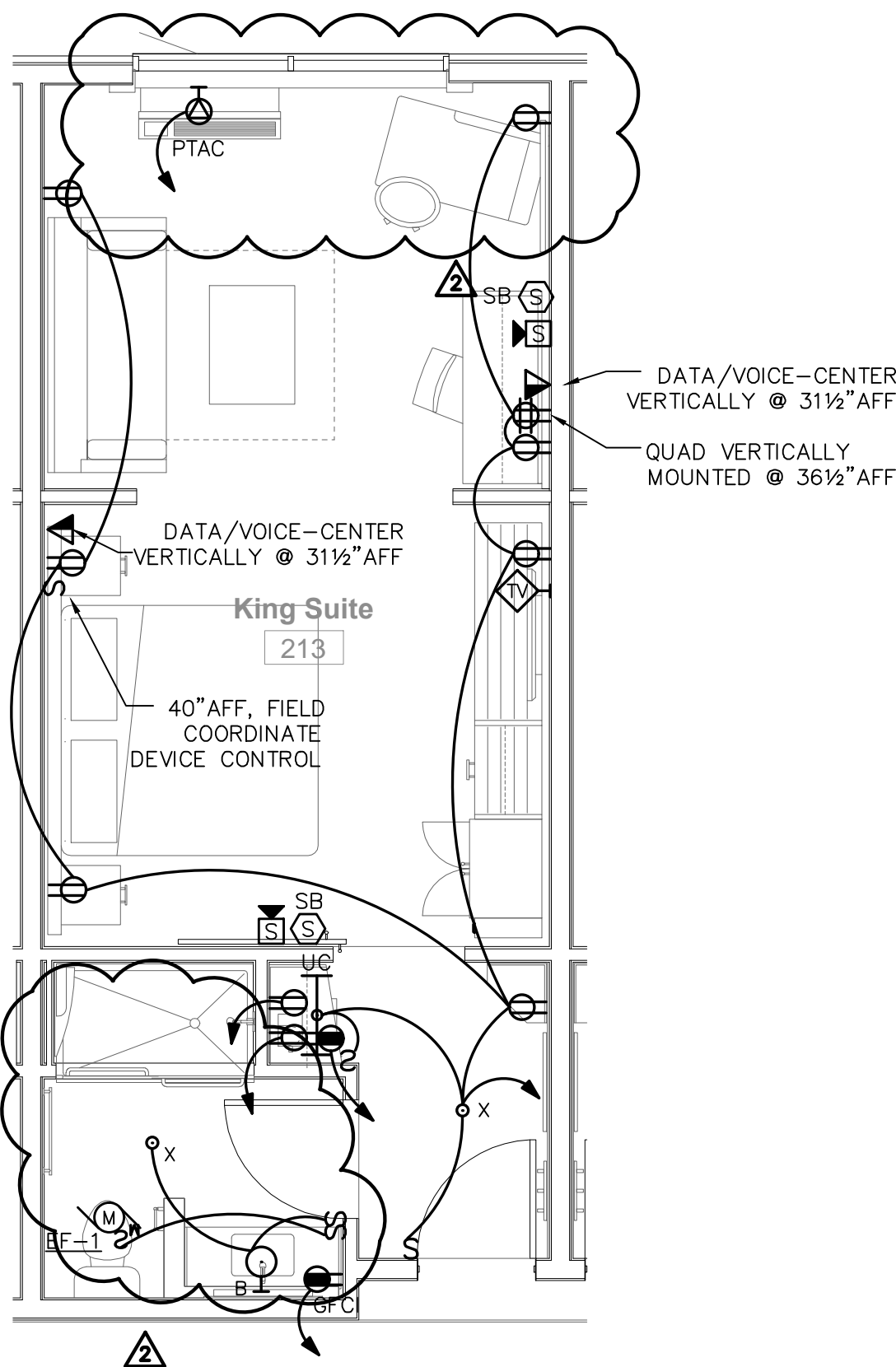
WIRING DIAGRAM OF VISUAL/AUDIBLE NOTIFICATION DEVICES FOR HEARING IMPAIRED AND ACCESSIBLE UNITS (10VA)

8
E304
NTS

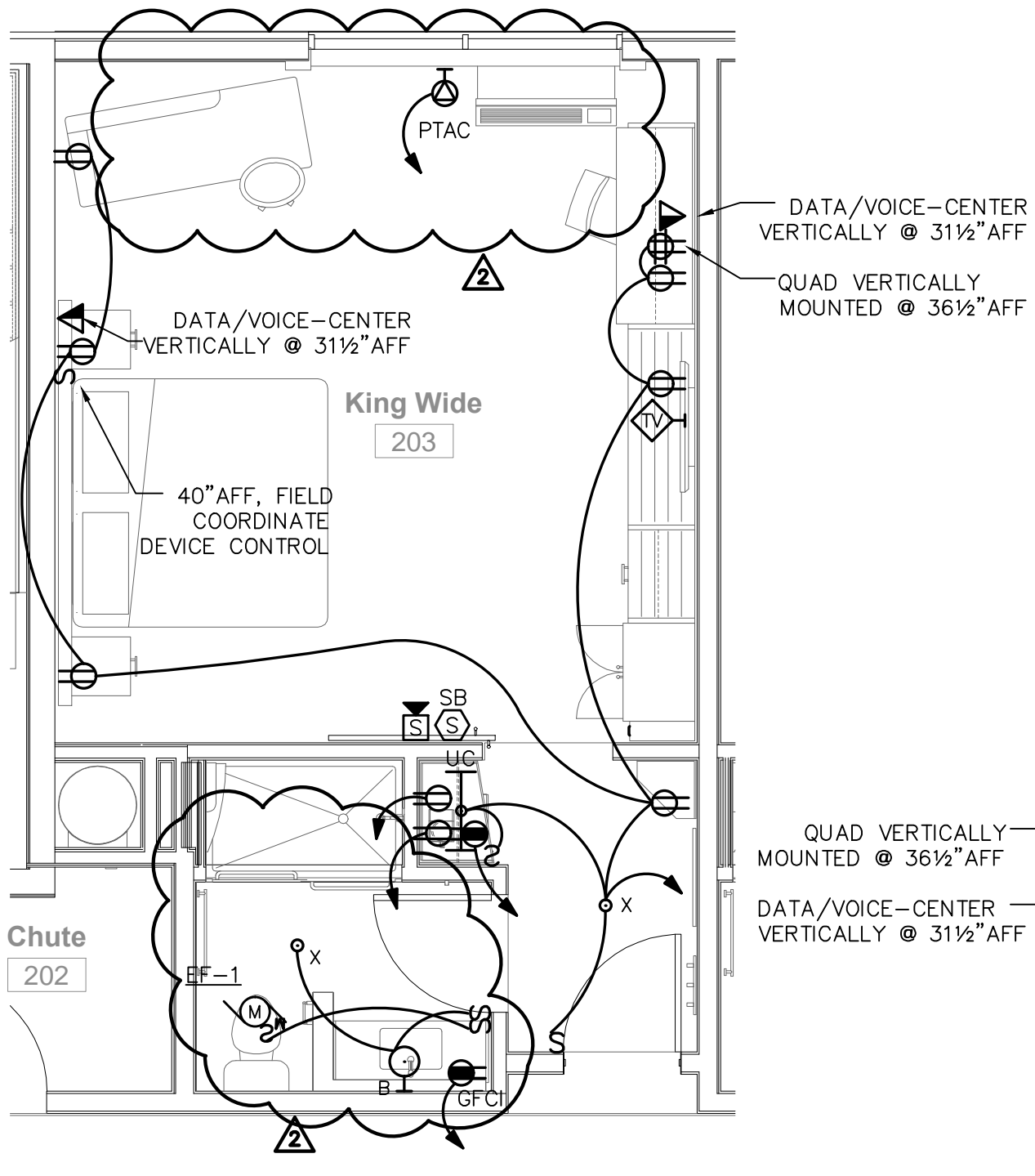
Holiday Inn Express & Suites



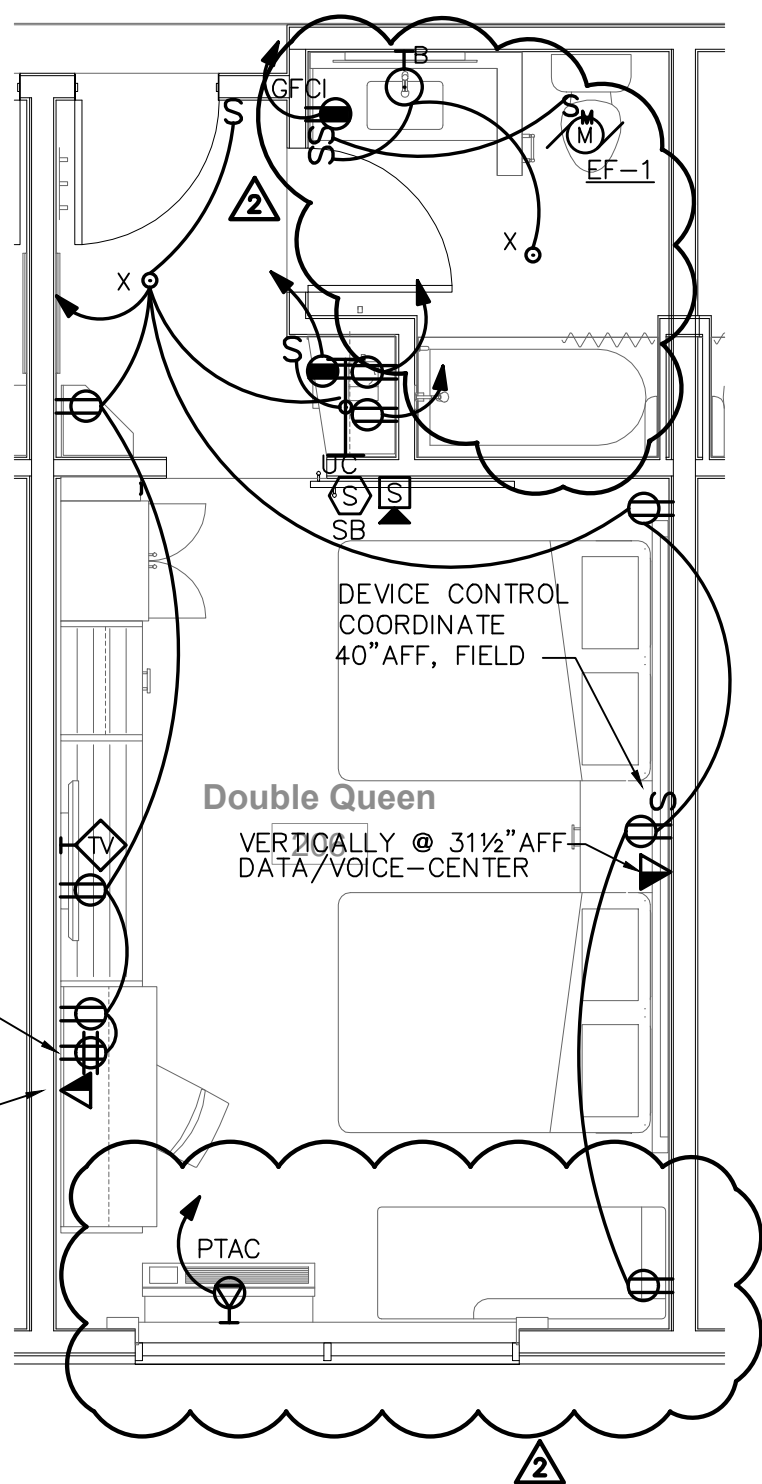
1 KING UNIT
E304 SCALE: 1/4" = 1'-0"



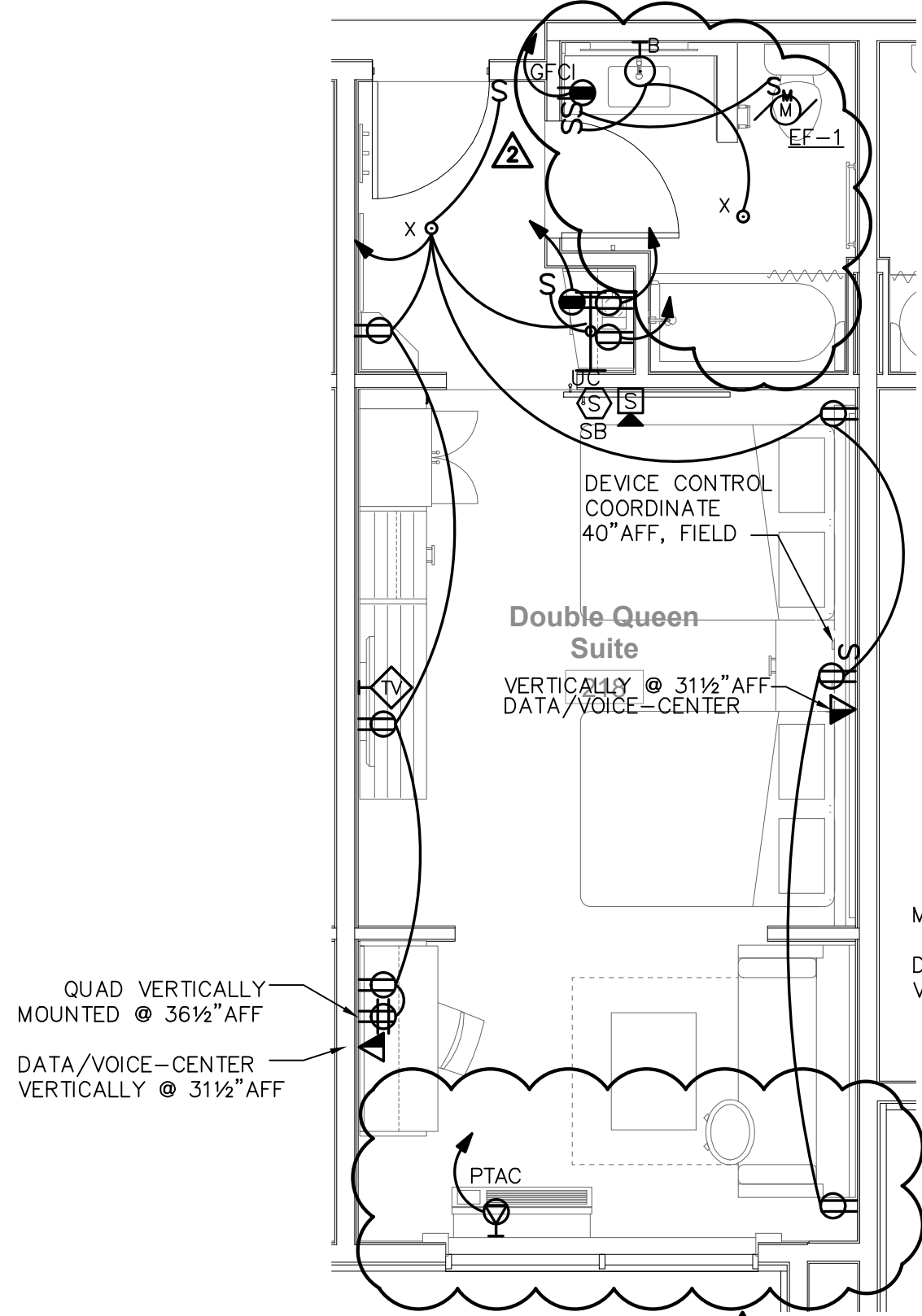
2 KING SUITE
E304 SCALE: 1/4" = 1'-0"



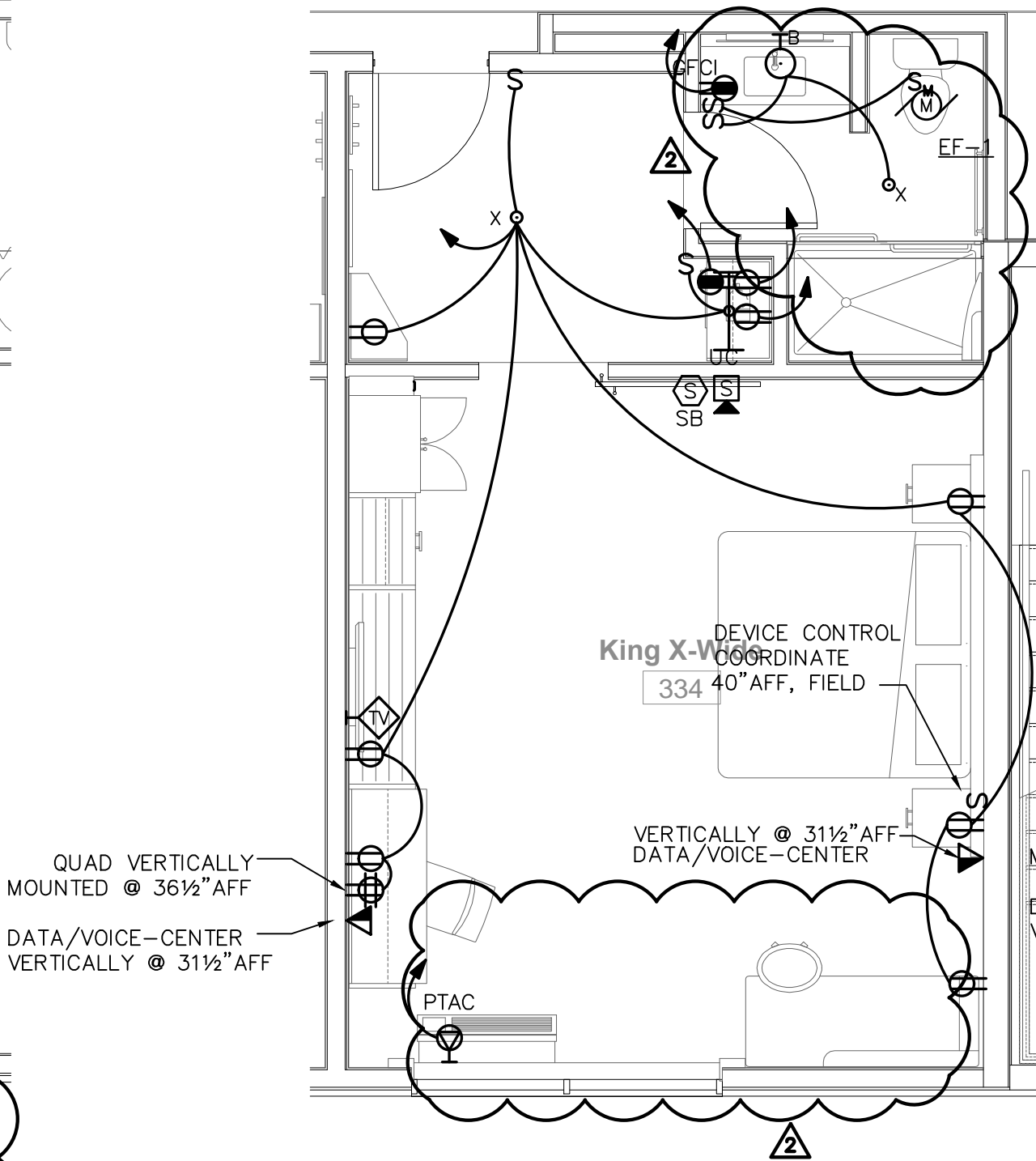
3 KING WIDE UNIT
E304 SCALE: 1/4" = 1'-0"



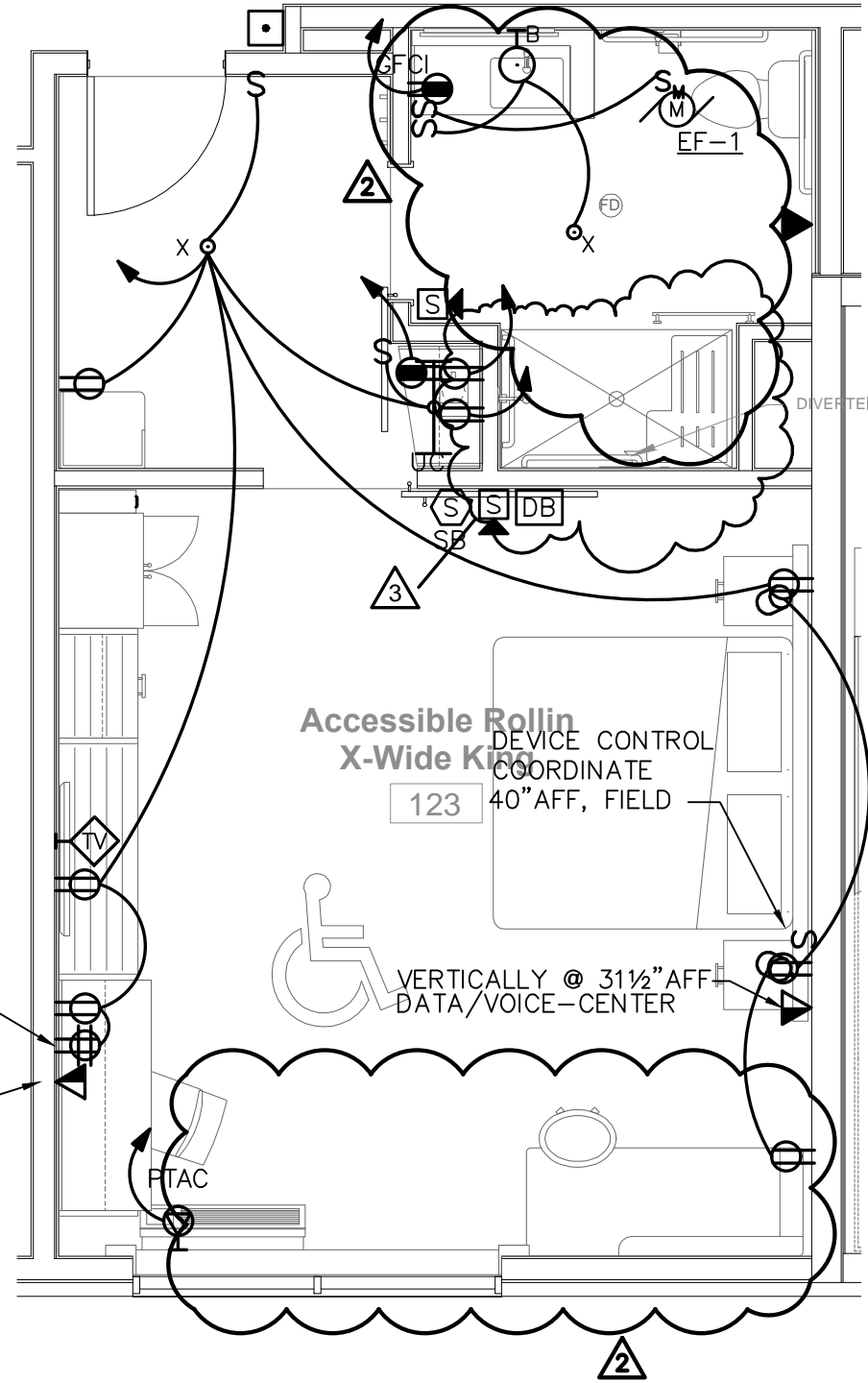
4 DOUBLE QUEEN UNIT
E304 SCALE: 1/4" = 1'-0"



5 DOUBLE QUEEN SUITE
E304 SCALE: 1/4" = 1'-0"



6 X-WIDE KING UNIT
E304 SCALE: 1/4" = 1'-0"



7 ACCESS. X-WIDE KING
E304 SCALE: 1/4" = 1'-0"