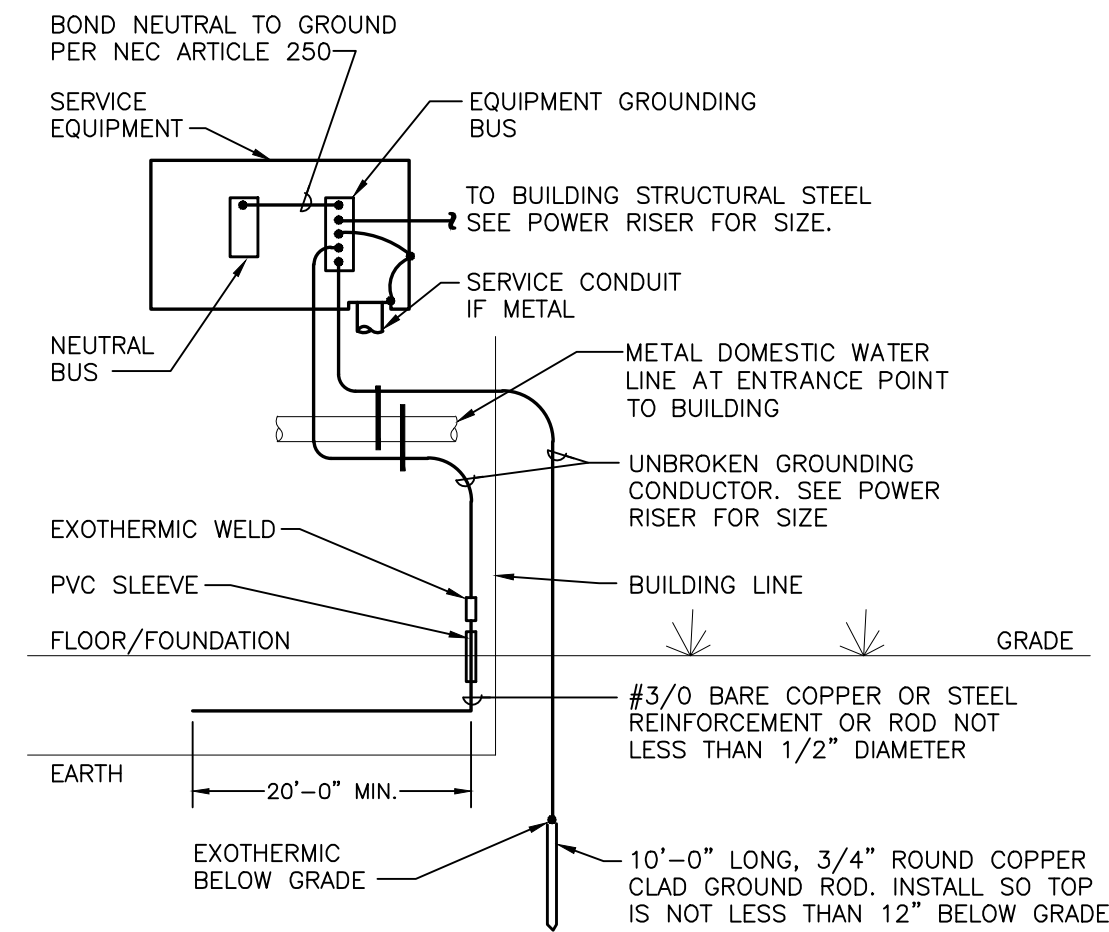


6800 S Creek Rd, Charlotte, NC 28277
Ph: (704) 625-6554 Fax: (704) 919-5822
EMAIL:ashish@mishraarch.com
WEB: www.mishraarch.com

CIVIL:
Benchmark Engineering and Surveying
101 Highpointe Court, Suite B
Brandon, MS 39042
Phone: (601) 591-1077
Fax: (601) 591-0177
Email: mikebes@bellsouth.net

STRUCTURAL:
WGPM, Inc.
11220 Elm Lane, Suite 201
Charlotte, NC 28277
Phone: (704) 542-7199
Fax: (704) 542-7195
Email: lwright@wgpminc.com

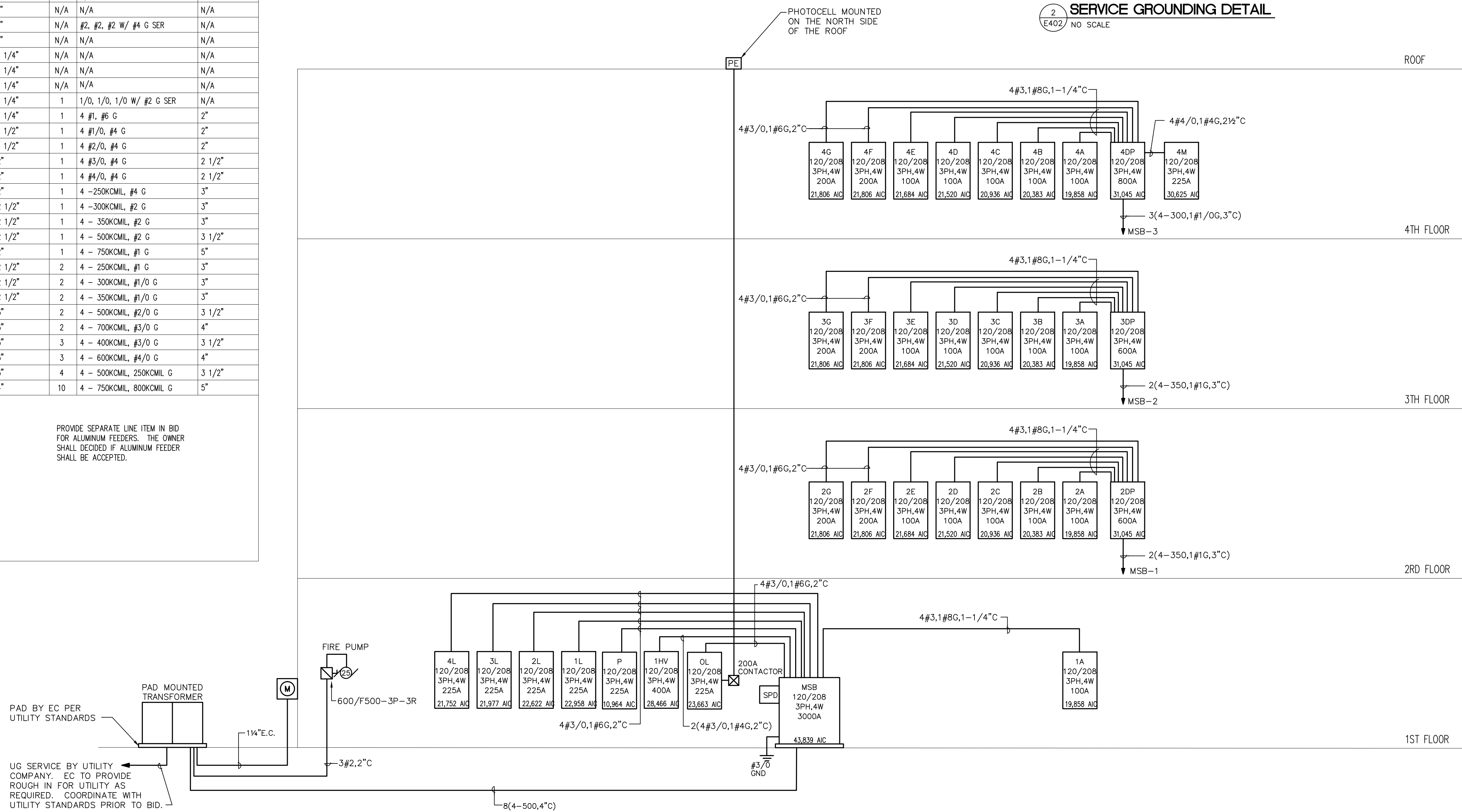
MEP:
Allied Consulting Engineers
2905-D Queen City Drive
Charlotte, NC 28208
Phone: (704) 399-3943
Email: asoler@allied-engineers.com



RESISTANCE TO GROUND SHALL BE LESS THAN 25 OHMS

2 SERVICE GROUNDING DETAIL

E402 NO SCALE



1 POWER RISER DIAGRAM

E402 NTS

NOTE:
WHERE ELECTRICAL PANELS ARE PLACED
IN STORAGE ROOMS, ALL NEC CLEARANCES MUST
BE MAINTAINED.

CU FEEDER SCHEDULE				AL FEEDERS			
STD. FUSE OR C/B TRIP SIZE	# OF SETS	BUILDING WIRE QUANTITY & SIZE. TYPE THHN – DRY TYPE THWN – WET	MINIMUM CONDUIT SIZE	# OF SETS	BUILDING WIRE QUANTITY & SIZE. TYPE THHN – DRY TYPE THWN – WET	MINIMUM CONDUIT SIZE	
30	1	4 #10, #10 G	1/2"	N/A	N/A	N/A	
35	1	4 #8, #10 G	3/4"	N/A	N/A	N/A	
40	1	4 #8, #10 G	3/4"	N/A	N/A	N/A	
45	1	4 #6, #10 G	1"	N/A	N/A	N/A	
50	1	4 #6, #10 G	1"	N/A	N/A	N/A	
60A	1	3 #6, #10 G	1"	N/A	#2, #2 W/ #4 G SER	N/A	
60	1	4 #6, #10 G	1"	N/A	N/A	N/A	
70	1	4 #4, #8 G	1 1/4"	N/A	N/A	N/A	
80	1	4 #3, #8 G	1 1/4"	N/A	N/A	N/A	
90	1	4 #2, #8 G	1 1/4"	N/A	N/A	N/A	
100A	1	3 #1, #8 G	1 1/4"	1	1/0, 1/0, 1/0 W/ #2 G SER	N/A	
100	1	4 #3, #8 G	1 1/4"	1	4 #1, #6 G	2"	
110	1	4 #1, #6 G	1 1/2"	1	4 #1/0, #4 G	2"	
125	1	4 #1, #6 G	1 1/2"	1	4 #2/0, #4 G	2"	
150	1	4 #1/0, #6 G	2"	1	4 #3/0, #4 G	2 1/2"	
175	1	4 #2/0, #6 G	2"	1	4 #4/0, #4 G	2 1/2"	
200	1	4 #3/0, #6 G	2"	1	4 – 250KCMIL, #4 G	3"	
225	1	4 #4/0, #4 G	2 1/2"	1	4 – 300KCMIL, #2 G	3"	
250	1	4 – 250KCMIL, #4 G	2 1/2"	1	4 – 350KCMIL, #2 G	3"	
300	1	4 – 350KCMIL, #4 G	2 1/2"	1	4 – 500KCMIL, #2 G	3 1/2"	
350	2	4 #2/0, #3 G	2"	1	4 – 750KCMIL, #1 G	5"	
400	2	4 – #3/0, #3 G	2 1/2"	2	4 – 250KCMIL, #1 G	3"	
450	2	4 #4/0, #2 G	2 1/2"	2	4 – 300KCMIL, #1/0 G	3"	
500	2	4 – 250KCMIL, #2 G	2 1/2"	2	4 – 350KCMIL, #1/0 G	3"	
600	2	4 – 350KCMIL, #1 G	3"	2	4 – 500KCMIL, #2/0 G	3 1/2"	
700	2	4 – 500KCMIL, #1/0 G	3"	2	4 – 700KCMIL, #3/0 G	4"	
800	3	4 – 300KCMIL, #1/0 G	3"	3	4 – 400KCMIL, #3/0 G	3 1/2"	
1000	3	4 – 400KCMIL, #2/0 G	3"	3	4 – 600KCMIL, #4/0 G	4"	
1200	4	4 – 350KCMIL, #3/0 G	3"	4	4 – 500KCMIL, 250KCMIL G	3 1/2"	
3000	8	4 – 600KCMIL, 500KCMIL G	4"	10	4 – 750KCMIL, 800KCMIL G	5"	

NOTES:

1. ALL FEEDER SIZES LISTED MAY NOT BE USED IN PROJECT RISER DIAGRAM.

2. ELECTRICAL CONTRACTOR TO VERIFY CONDUIT SIZE REQUIRED IF WIRE TYPES OTHER THAN THOSE LISTED ABOVE ARE USED.

3. REFER TO LATEST EDITION OF NEC FOR CONDUIT TYPES REQUIRED PER THEIR LOCATION. IF CONDUIT OTHER THAN "EMT" IS REQUIRED USE SIZE PER MAXIMUM FILL TABLES.

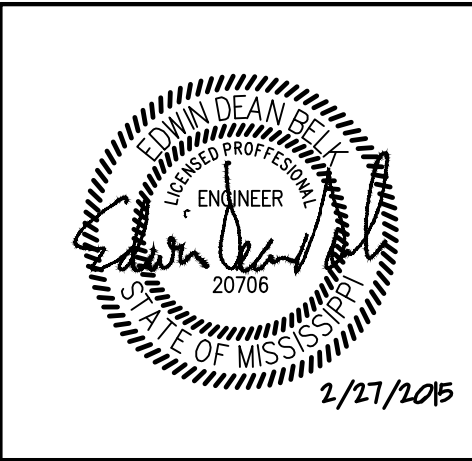
4. FEEDER SIZES SHOWN IN PROJECT RISER WITH A DELTA SYMBOL "Δ" ARE 3φ, 3 WIRE FEEDERS, A NEUTRAL WIRE IS NOT REQUIRED.

5. FEEDER SIZES SHOWN IN PROJECT RISER WITH A DELTA SYMBOL "Δ" F ARE 1φ, 3 WIRE FEEDERS.

PROMOVE SEPARATE LINE ITEM IN BID FOR ALUMINUM FEEDERS. THE OWNER SHALL DECIDE IF ALUMINUM FEEDER SHALL BE ACCEPTED.

[illegible]

Information contained on this drawing and in all digital files associated is authorized for use on the project named herein only and is the property of MISHRA ARCHITECTURE PLLC and may not be reproduced in any manner without express written or verbal permission from authorized individuals. Original drawing is 24"x36" and scales are as indicated. ©2013 MISHRA ARCHITECTURE PLLC



KEY PLAN

Shiva Southaven
Inc.

Holiday Inn Express
& Suites

Lot 16 (Rev Lot 3) Southcrest
Pkwy.
Southcrest Subdivision
Southaven, MS 38671

Drawing Title

POWER RISER DIAGRAM

Phase

Construction Documents

Project No.	14-081	Sheet No. E402
Prepared by	MAH	
Checked by	EDB	
Date	Feb. 27, 2015	

Holiday Inn Express & Suites