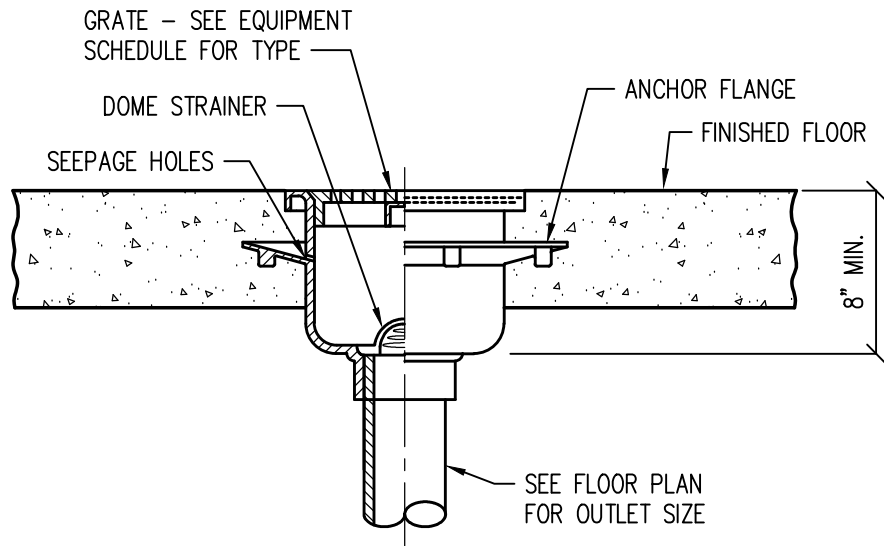
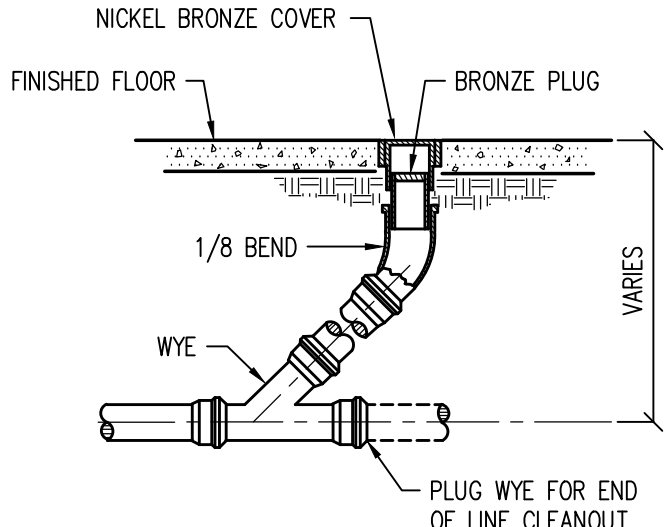


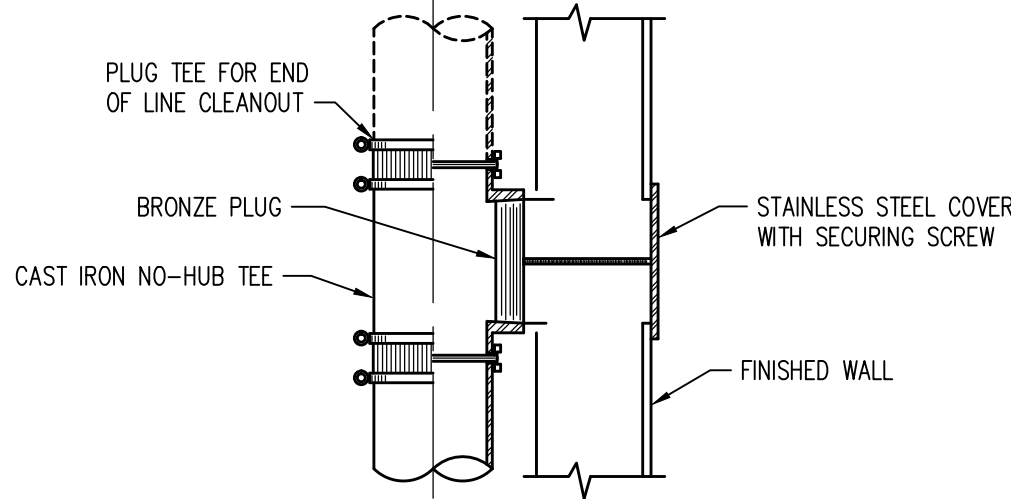
1 FLOOR DRAIN DETAIL
P003 NOT TO SCALE



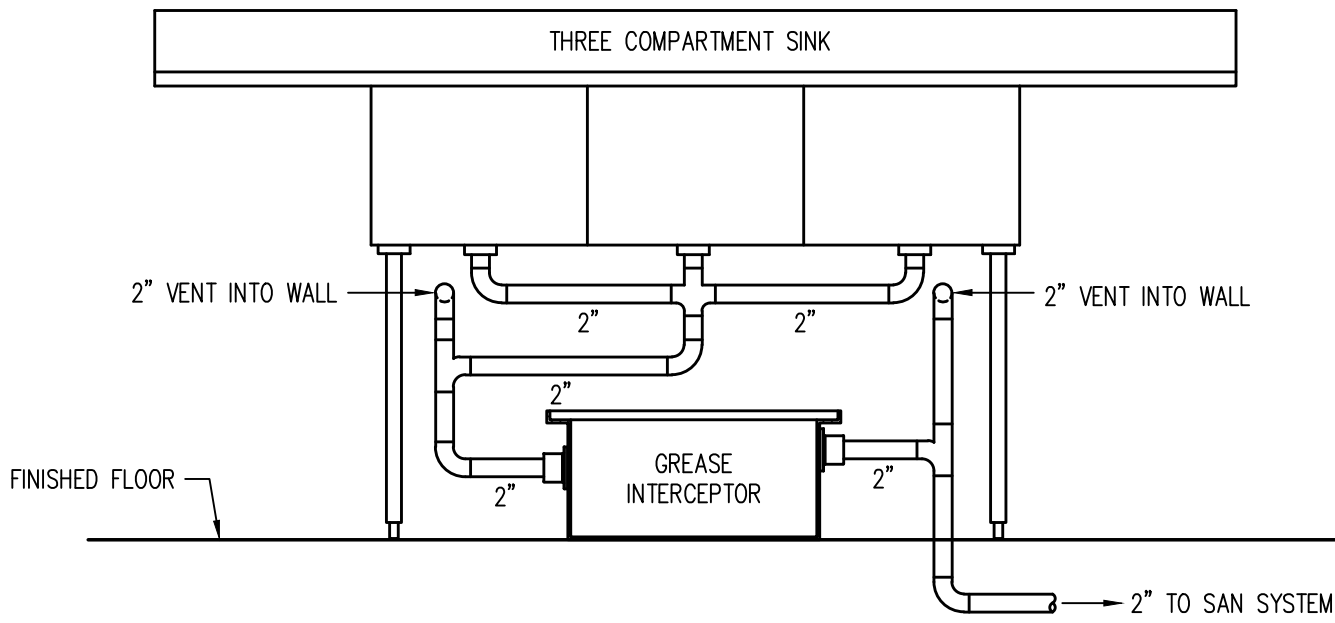
2 FLOOR SINK DETAIL
P003 NOT TO SCALE



3 FLOOR CLEANOUT DETAIL
P003 NOT TO SCALE

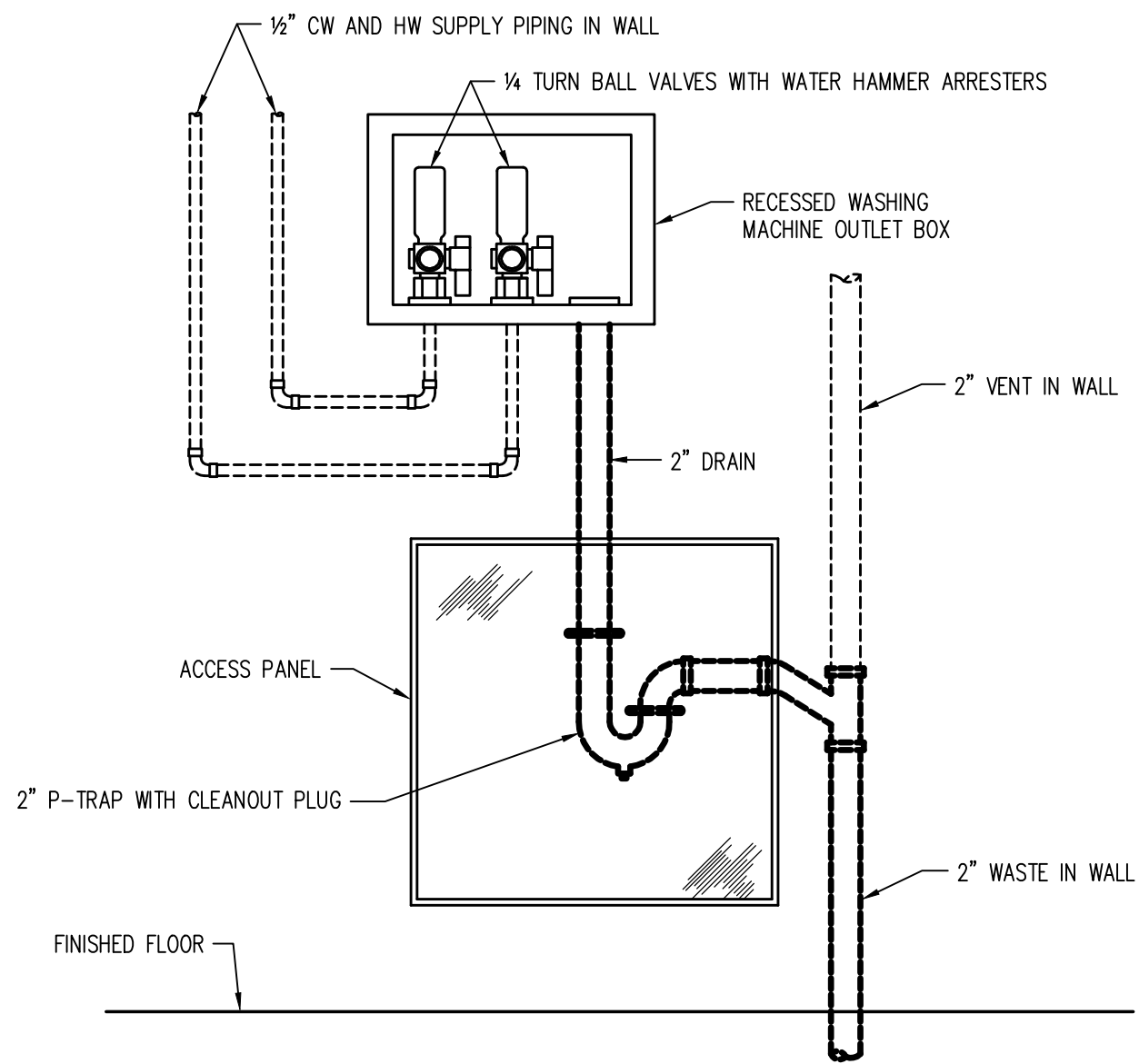


4 WALL CLEANOUT DETAIL
P003 NOT TO SCALE

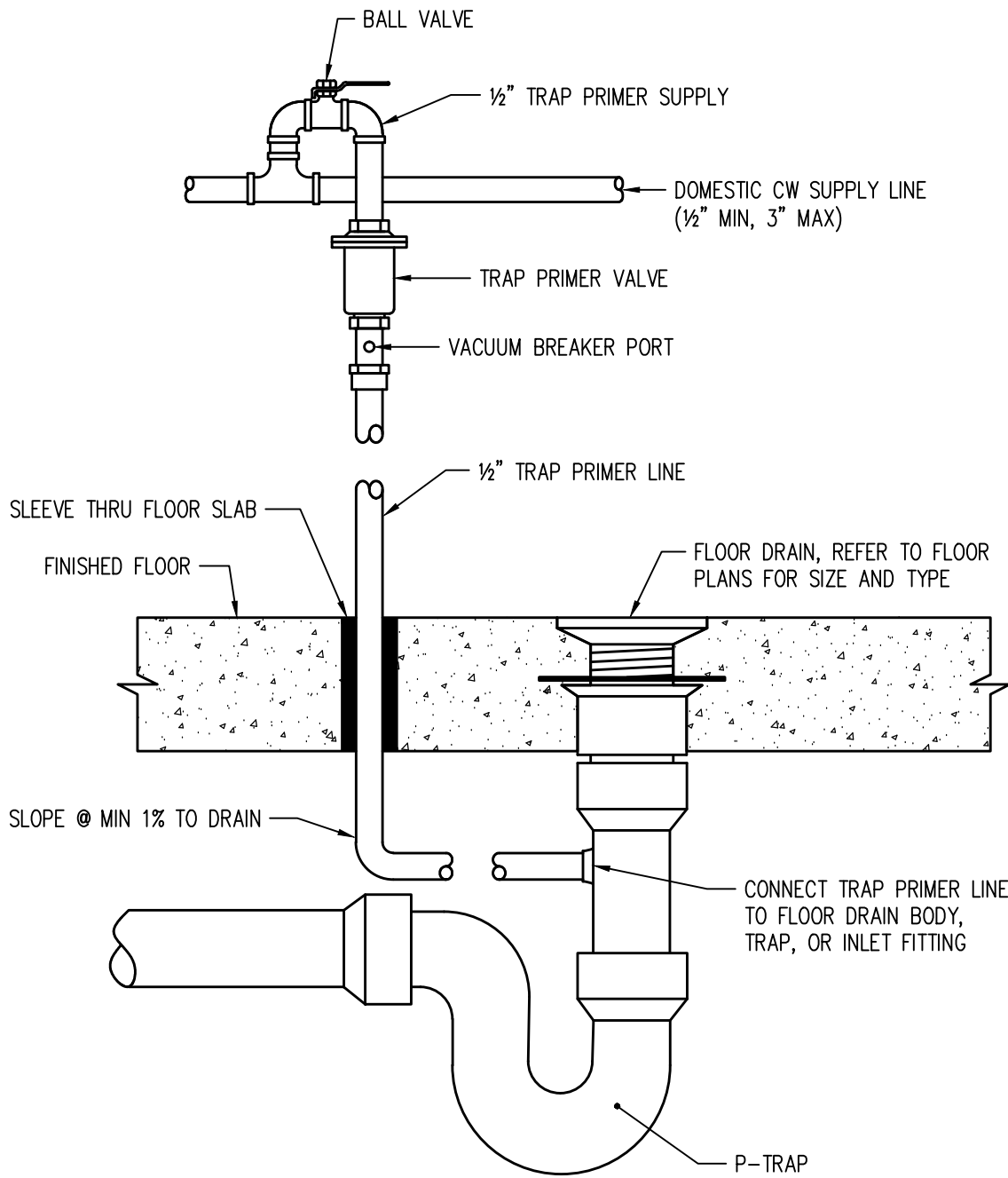


5 THREE COMPARTMENT SINK DETAIL
P003 NOT TO SCALE

GREASE INTERCEPTOR SIZING
(1) 3 COMPARTMENT SINK W/ 16" X 20" X 12" BOWLS (16x20x12)(3) = 11,520 CUBIC INCHES / 231 = 50 GALLONS 50 GALLONS x 75% LOADING FACTOR = 37 GALLONS FOR A 2 MINUTE DRAINAGE PERIOD = 19 GPM
TOTAL = 19 GPM
GREASE INTERCEPTOR: ASHLAND MODEL 4820, 20 GPM FLOW, 40 LBS GREASE CAPACITY, WITH FLOW CONTROL, 2" INLET AND OUTLET, BOLTED AND GASKETED COVER. INSTALL INTERCEPTOR ON FLOOR IN ACCORDANCE WITH MANUFACTURER'S INSTRUCTIONS, PROVIDE ALL NECESSARY COMPONENTS FOR A COMPLETE AND CODE COMPLIANT INSTALLATION.

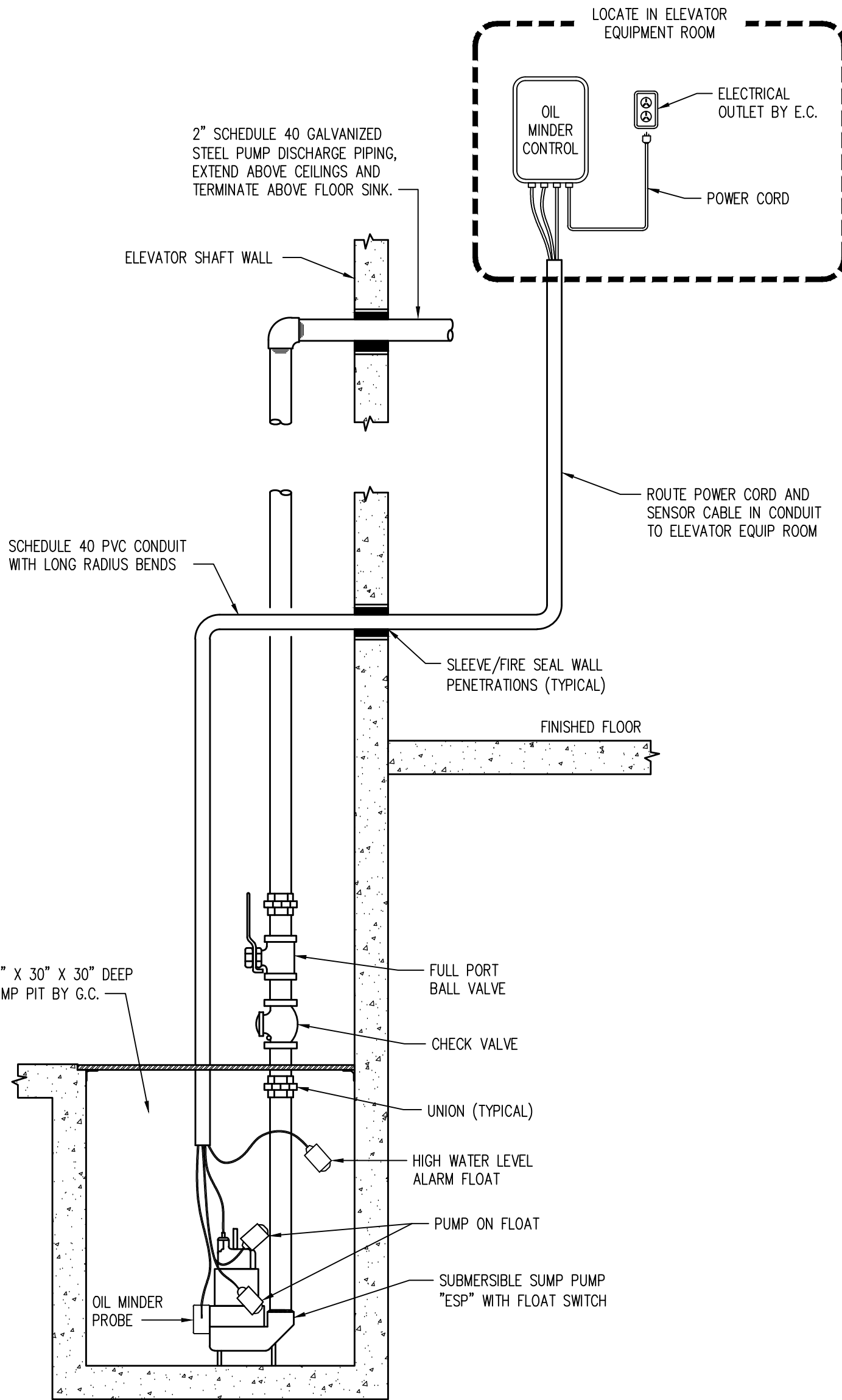


6 WASHING MACHINE OUTLET BOX DETAIL
P003 NOT TO SCALE



- TRAP PRIMER NOTES:
1. PROVIDE TRAP PRIMER VALVES FOR ALL FLOOR DRAINS, EXCEPT SHOWER DRAINS.
 2. TRAP PRIMER VALVES SHALL BE SIOUX CHIEF PRIME PERFECT SERIES 695, OR EQUAL.
 3. CONNECT TRAP PRIMER VALVE TO CW LINE: 1/2" MIN. - 3" MAX.
 4. PROVIDE SIOUX CHIEF WYE SPLITTER AND/OR DISTRIBUTOR FOR TRAP PRIMER VALVES SERVING MORE THAN ONE FLOOR DRAIN.
 5. MAXIMUM OF EIGHT FLOOR DRAINS MAY BE SERVED BY ONE TRAP PRIMER VALVE.

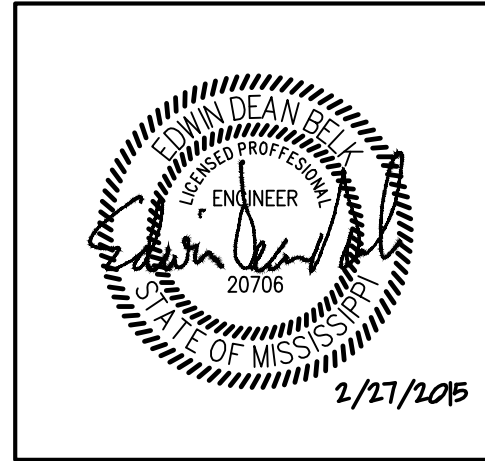
7 TRAP PRIMER DETAIL
P003 NOT TO SCALE



8 ELEVATOR SUMP PUMP DETAIL
P003 NOT TO SCALE

REVISIONS		
No.	Date	Description
1		

Information contained on this drawing and in all digital files associated is authorized for use on the project named herein only and is the property of MISHRA ARCHITECTURE PLLC and may not be reproduced in any manner without express written or verbal permission from authorized individuals. Original drawing is 24"x36" and scales are as indicated. © 2013 MISHRA ARCHITECTURE PLLC



KEY PLAN

Shiva Southaven Inc.

Holiday Inn Express & Suites

Lot 16 (Rev Lot 3) Southcrest Pkwy.
Southcrest Subdivision
Southaven, MS 38671

Drawing Title
Plumbing Details

Phase
Construction Documents

Project No.	14-081	Sheet No.	P003
Prepared by	MJS		
Checked by	EDB		
Date	Feb. 27, 2015		

Holiday Inn Express & Suites