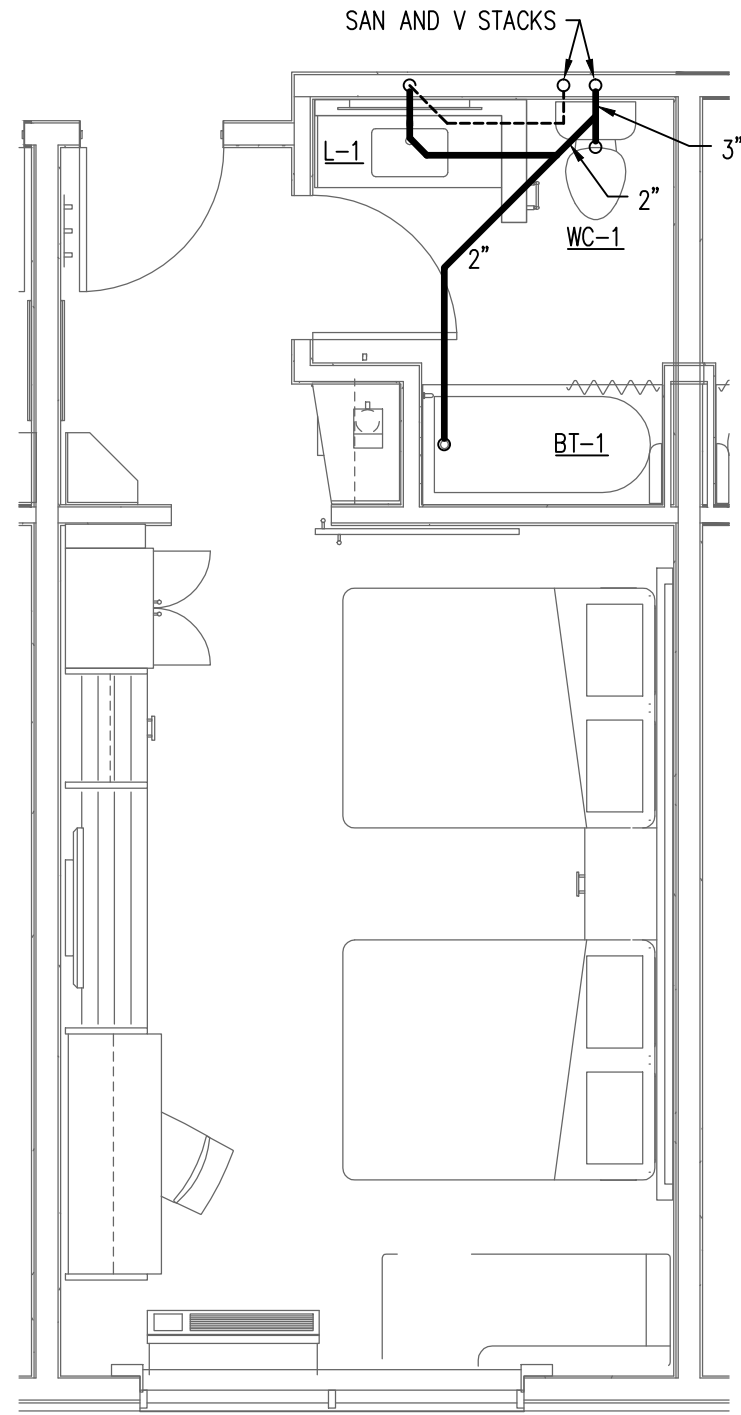
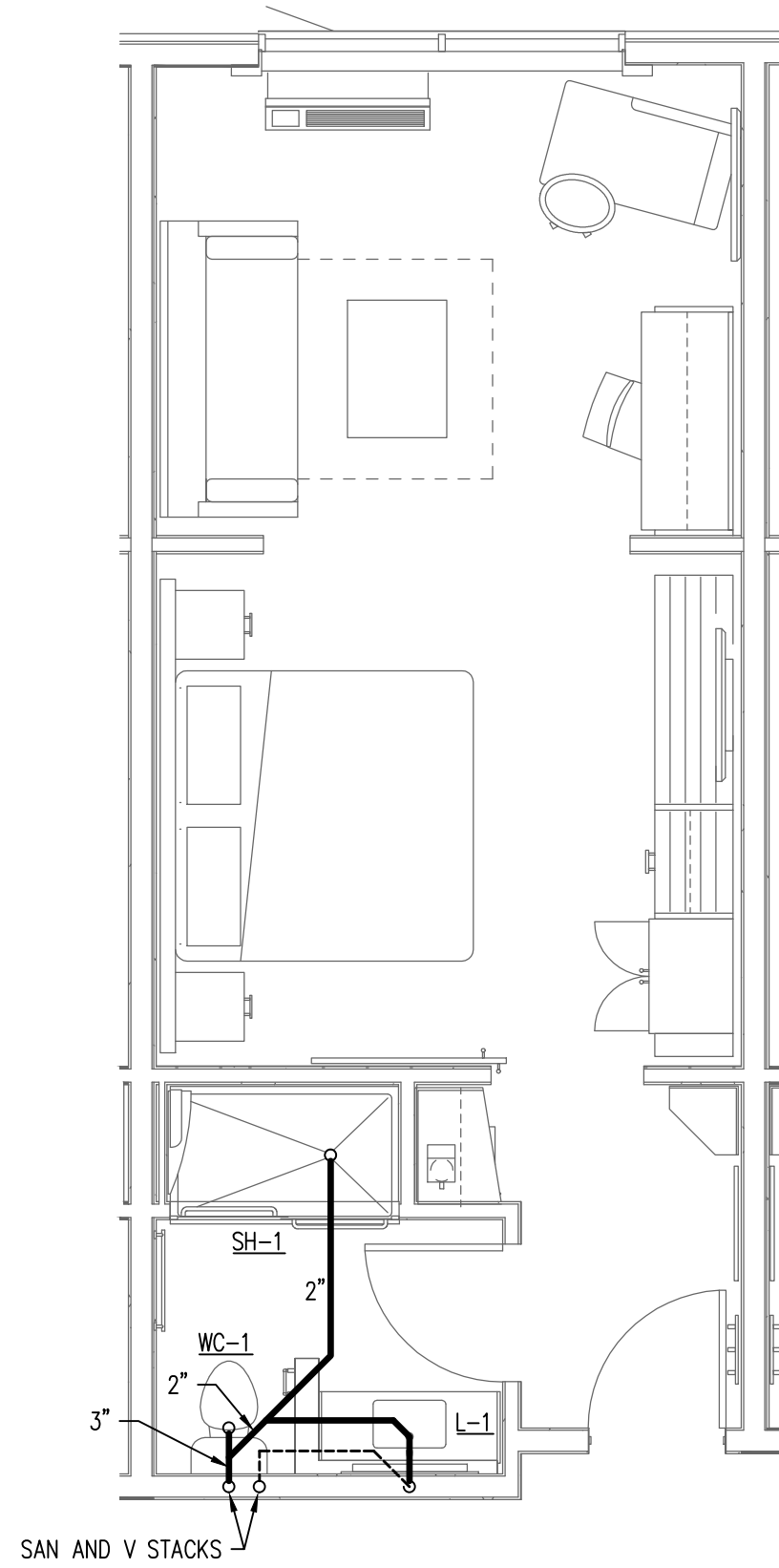


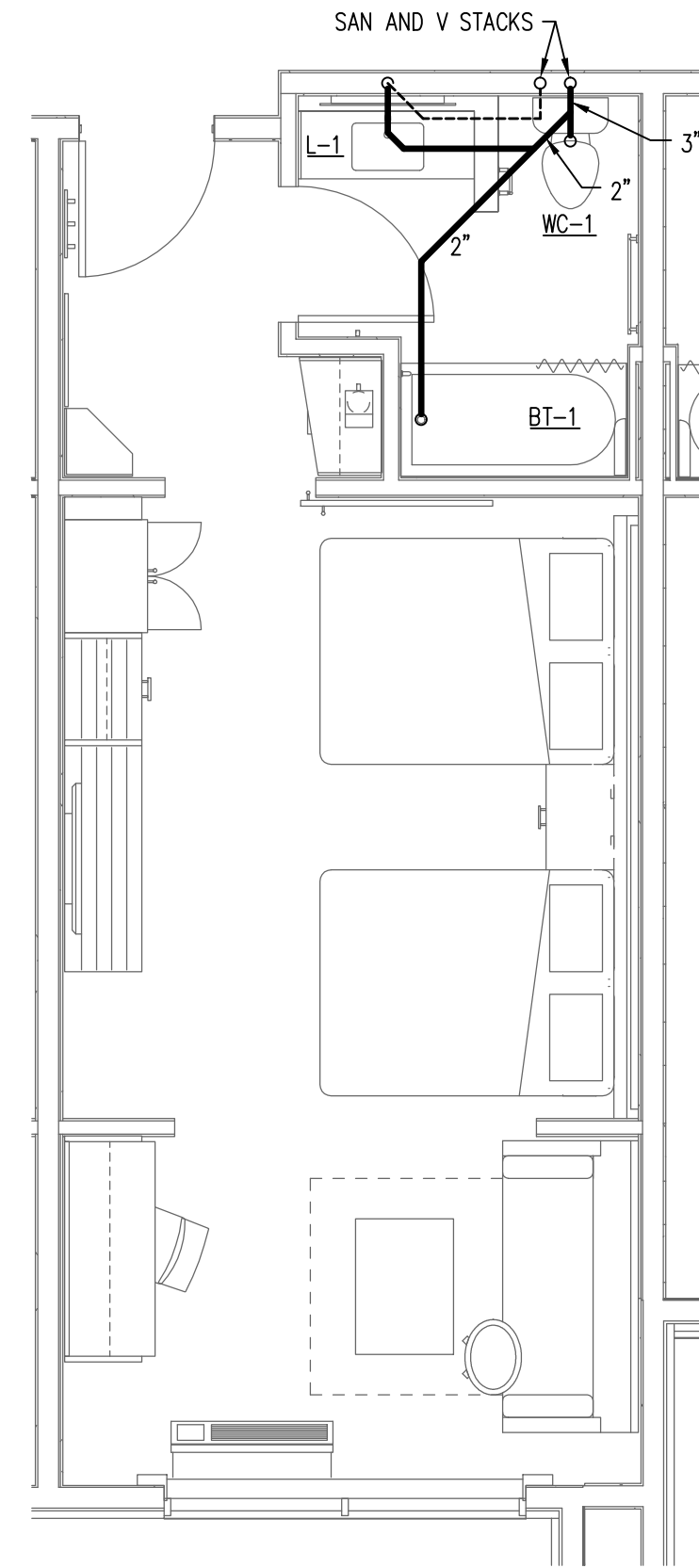
1 **KING**  
P201 SCALE: 1/4" = 1'-0"



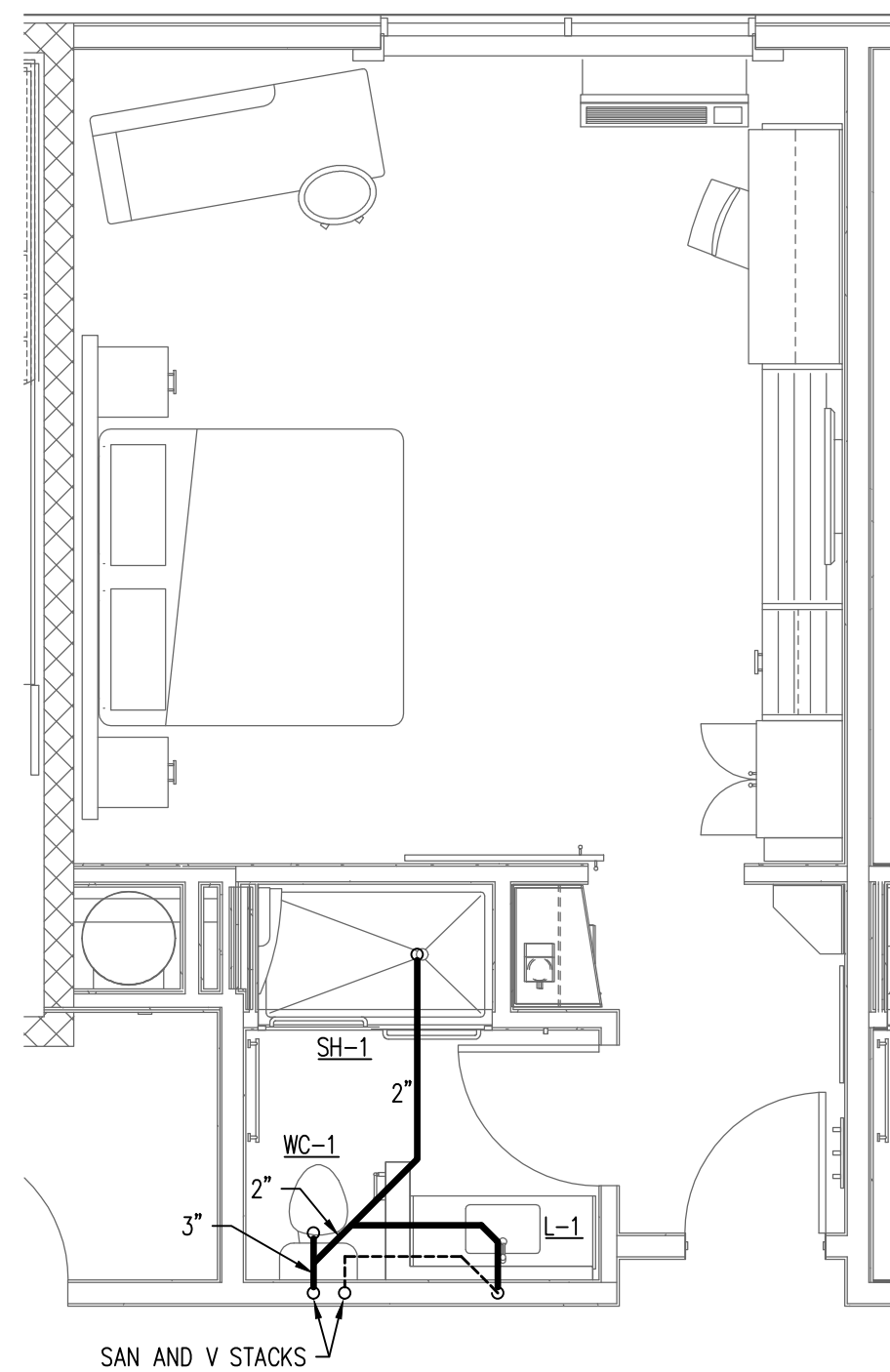
2 **DOUBLE QUEEN**  
P201 SCALE: 1/4" = 1'-0"



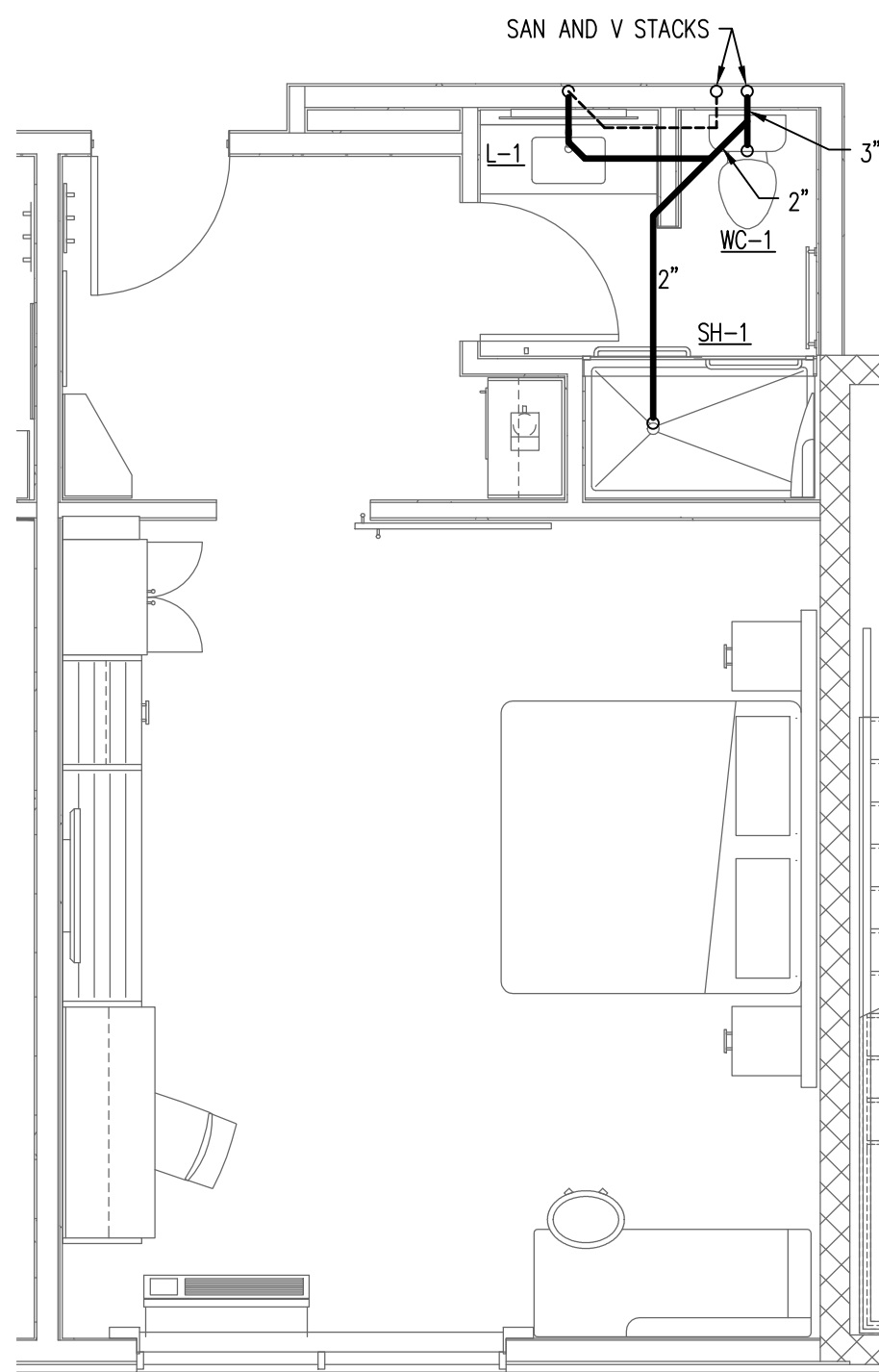
3 **KING SUITE**  
P201 SCALE: 1/4" = 1'-0"



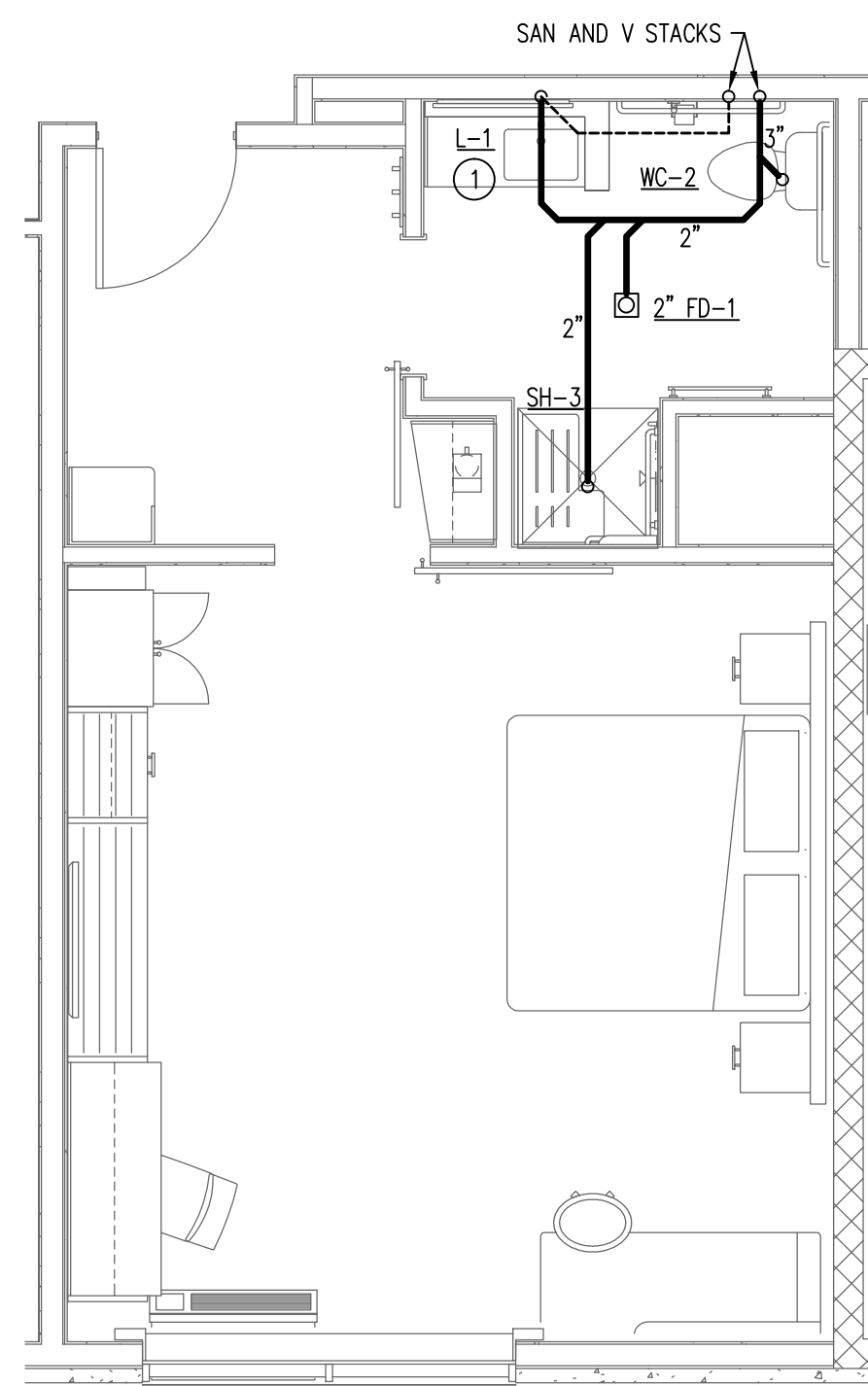
4 **DOUBLE QUEEN SUITE**  
P201 SCALE: 1/4" = 1'-0"



5 **KING WIDE**  
P201 SCALE: 1/4" = 1'-0"



6 **KING X-WIDE**  
P201 SCALE: 1/4" = 1'-0"



7 **ACCESSIBLE ROLLIN X-WIDE KING**  
P201 SCALE: 1/4" = 1'-0"

#### KEYED NOTES THIS SHEET

① IN LIEU OF SPECIFIED P-TRAP, PROVIDE ZURN Z1021 WATER SAVER TRAP PRIMER P-TRAP WITH CLEANOUT PLUG AND PRIMER HOSE. CONNECT 1/2" TRAP PRIMER LINE TO PRIMER HOSE, DROP DOWN IN WALL TO BELOW FLOOR, AND EXTEND BELOW FLOOR TO CONNECTION ON FLOOR DRAIN.

GUEST ROOM PIPING LAYOUTS ARE TYPICAL FOR EACH TYPE OF GUEST ROOM INDICATED. SEE FLOOR PLANS FOR ROOM LOCATIONS AND ADDITIONAL INFORMATION.

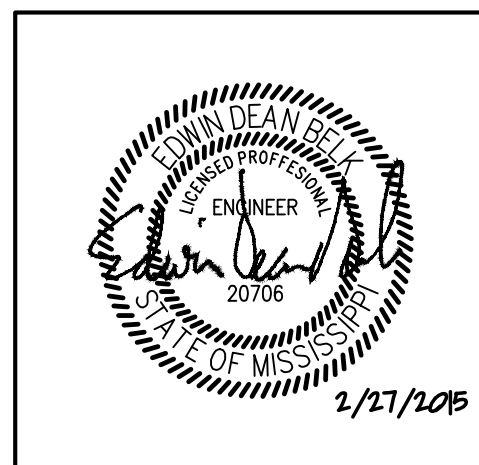
SEE FIXTURE SCHEDULE ON SHEET P002 FOR SIZES OF SANITARY AND VENT CONNECTIONS TO INDIVIDUAL FIXTURES.

MINIMUM SIZE FOR SANITARY AND VENT PIPING BELOW GROUND SHALL BE 2".

ALL VENT PIPING SHOWN ON THIS SHEET SHALL BE RUN ABOVE CEILINGS IN AREAS WITH CEILINGS AND SHALL BE RUN AS HIGH AS POSSIBLE IN AREAS WITHOUT CEILINGS, UNLESS OTHERWISE NOTED. ALL SANITARY PIPING SHOWN ON THIS SHEET SHALL BE RUN BELOW FLOORS, UNLESS OTHERWISE NOTED.

REVISIONS		
No.	Date	Description
1		

Information contained on this drawing and in all digital files associated is authorized for use on the project named herein only and is the property of MISHRA ARCHITECTURE PLLC and may not be reproduced in any manner without express written or verbal permission from authorized individuals. Original drawing is 24"x36" and scales are as indicated. © 2013 MISHRA ARCHITECTURE PLLC



KEY PLAN

Shiva Southaven Inc.

Holiday Inn Express & Suites

Lot 16 (Rev Lot 3) Southcrest Pkwy.  
Southcrest Subdivision  
Southaven, MS 38671

Drawing Title

Plumbing  
Enlarged Guest Room Plans  
Sanitary

Phase  
Construction Documents

Project No.	14-081	Sheet No.	P201
Prepared by	MJS		
Checked by	EDB		
Date	Feb. 27, 2015		