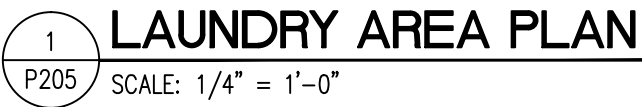
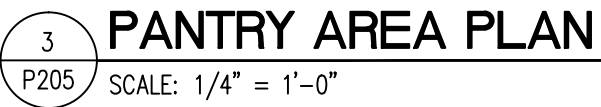


CIVIL:
Benchmark Engineering and Surveying
101 Highpointe Court, Suite B
Brandon, MS 39042
Phone: (601) 591-1077
Fax: (601) 591-0177
Email: mikebes@bellsouth.net

MEP:
Allied Consulting Engineers
2905-D Queen City Drive
Charlotte, NC 28208
Phone: (704) 399-3943
Email: asoler@allied-engineers.com



Information contained on this drawing and
all digital files associated is authorized for
use on the project named herein only and
is the property of MISHRA
ARCHITECTURE PLLC and may not be
reproduced in any manner without express
written or verbal permission from
authorized individuals. Original drawing is
24"x36" and scales are as indicated. © 201
MISHRA ARCHITECTURE PLLC



- ① IN LIEU OF SPECIFIED P-TRAP, PROVIDE ZURN Z1021 WATER SAVER TRAP PRIMER P-TRAP WITH CLEANOUT PLUG AND PRIMER HOSE. CONNECT 1/2" TRAP PRIMER LINE TO PRIMER HOSE, DROP DOWN IN WALL TO BELOW FLOOR LEVEL, AND EXTEND BELOW FLOOR TO CONNECTION ON FLOOR DRAIN.
- ② PROVIDE FILTEROL-160 IN-LINE LINE FILTER MOUNTED ON WALL IN AN ACCESSIBLE LOCATION. CONNECT WASHING MACHINE DRAIN HOSE TO FILTER INLET, AND CONNECT HOSE PROVIDED WITH FILTER TO OUTLET AND TERMINATE IN WASHING MACHINE OUTLET BOX.
- ③ GREASE INTERCEPTOR SET ON FLOOR. REFER TO DETAIL #5 ON SHEET P003.

MINIMUM SIZE FOR SANITARY AND VENT PIPING BELOW GROUND SHALL BE 2".

ALL VENT PIPING SHOWN ON THIS SHEET SHALL BE RUN ABOVE CEILINGS IN AREAS WITH CEILINGS AND SHALL BE RUN AS HIGH AS POSSIBLE IN AREAS WITHOUT CEILINGS, UNLESS OTHERWISE NOTED; ALL SANITARY PIPING SHOWN ON THIS SHEET SHALL BE RUN BELOW FLOORS, UNLESS OTHERWISE NOTED.

Project No.	14-081	Sheet No. P205
Prepared by	MJS	
Checked by	EDB	
Date	Feb. 27, 2015	

Holiday Inn Express & Suites