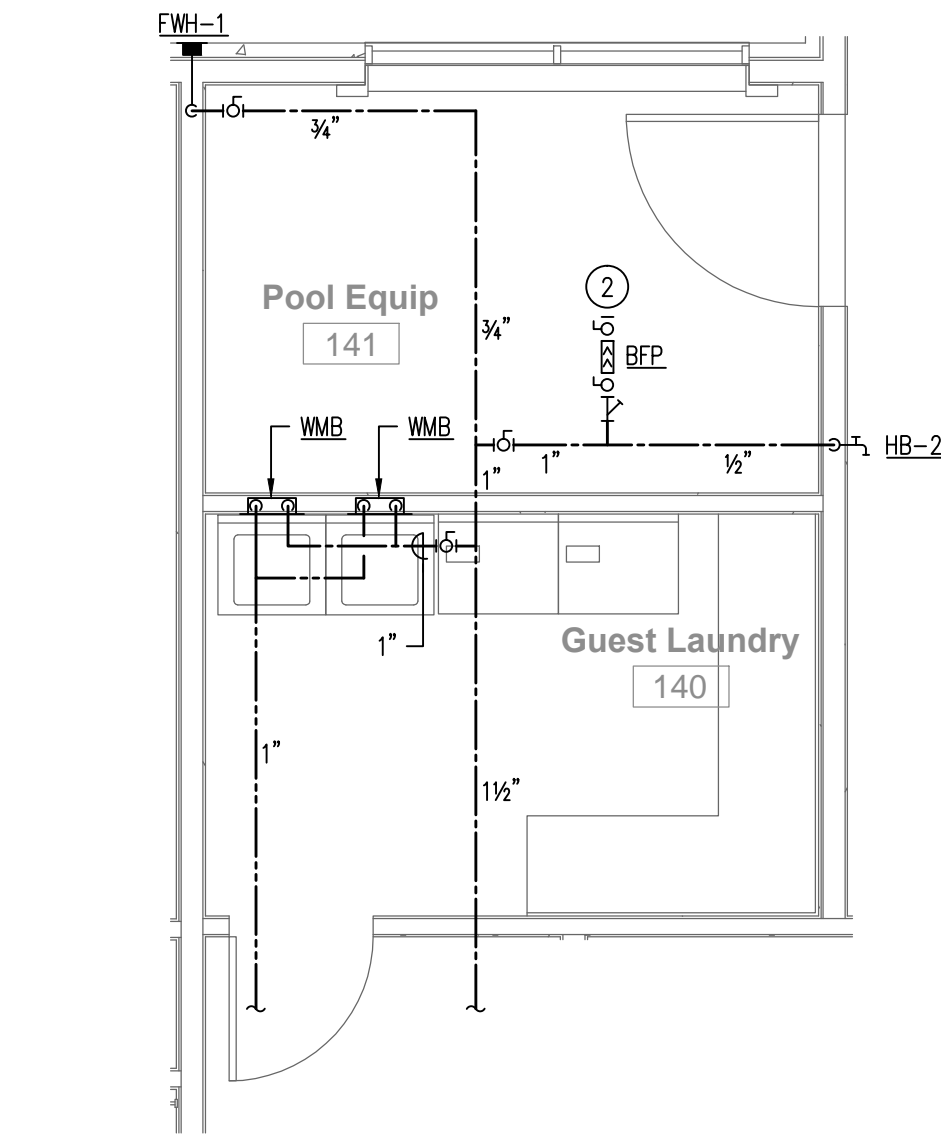
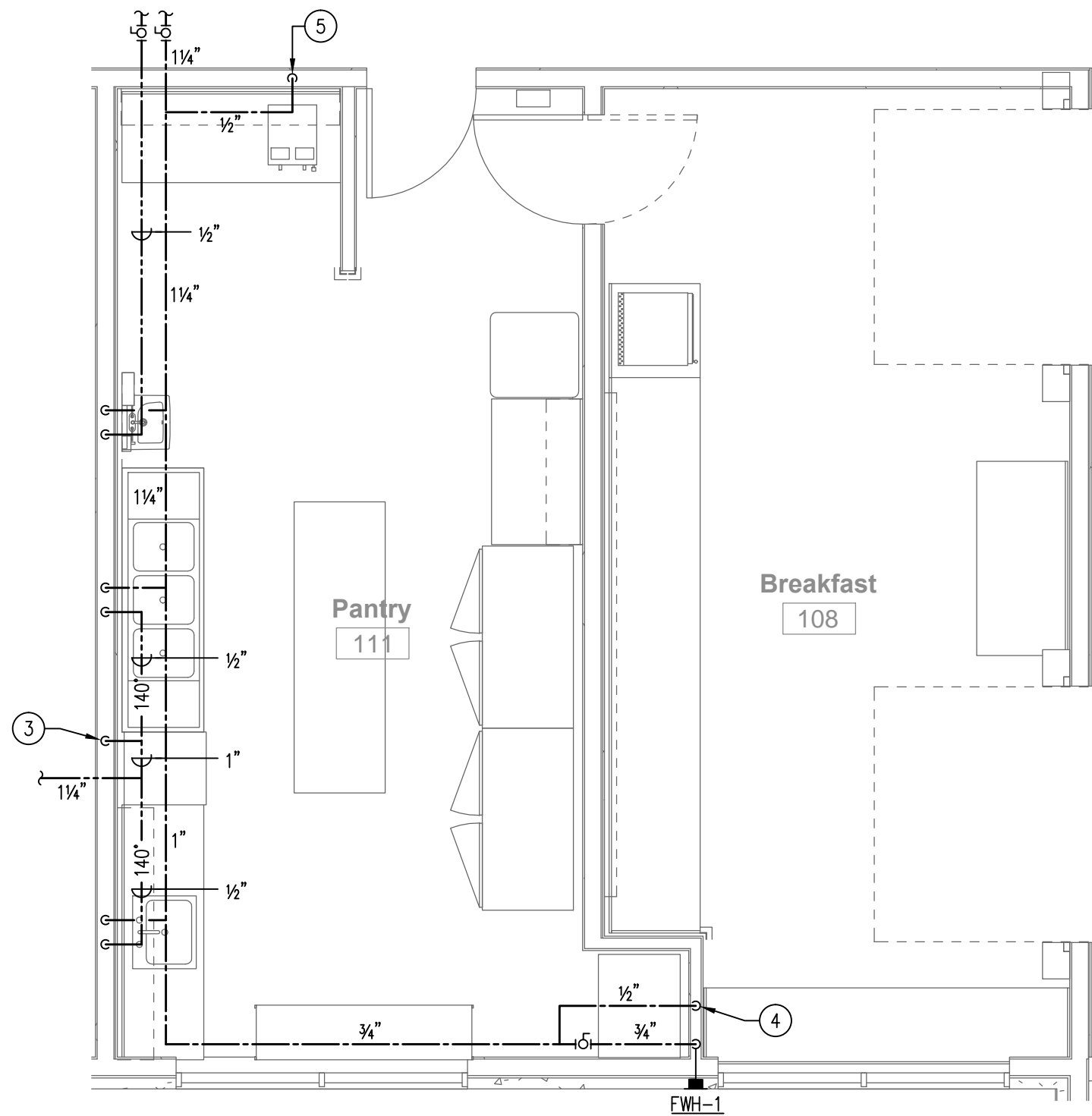


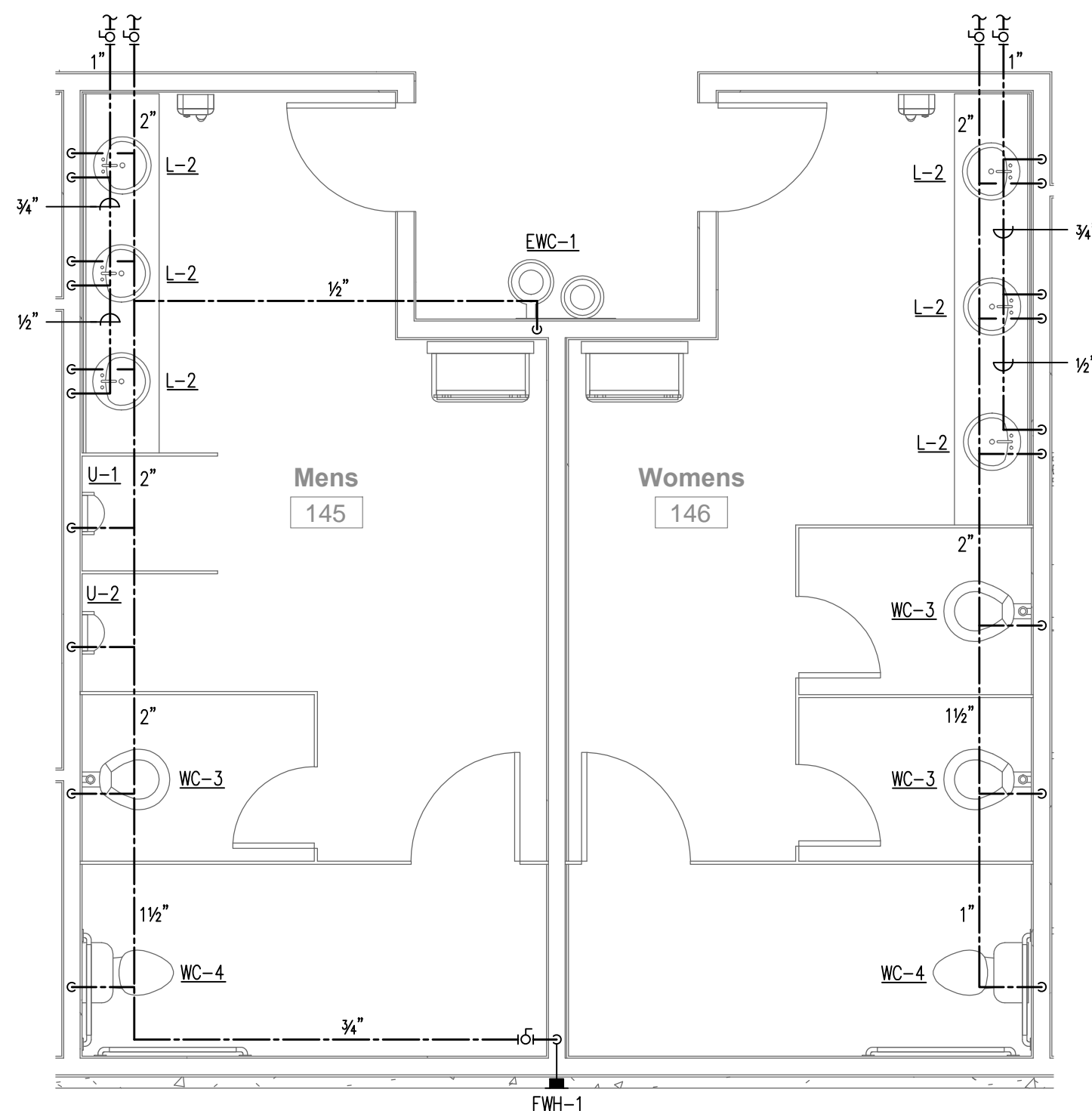
**1 LAUNDRY AREA PLAN**  
SCALE: 1/4" = 1'-0"



**2 POOL EQUIP AND GUEST LAUNDRY**  
SCALE: 1/4" = 1'-0"



**3 PANTRY AREA PLAN**  
SCALE: 1/4" = 1'-0"



**4 PUBLIC RESTROOMS**  
SCALE: 1/4" = 1'-0"

**KEYED NOTES THIS SHEET**

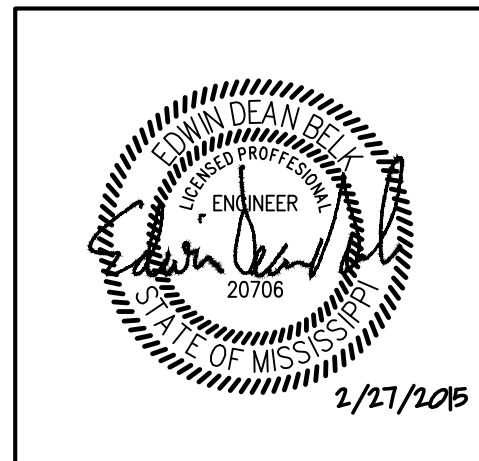
- 1/4" GAS TO DRYER, 165 MBH INPUT.
- PROVIDE CW CONNECTION FOR POOL SYSTEM. VERIFY SIZE AND LOCATION OF CONNECTION WITH POOL EQUIPMENT CONTRACTOR.
- CONNECT 1/2" HW TO DISHWASHER. PROVIDE BALL VALVE AND WATTS SERIES LF7 DUAL CHECK VALVE, UNLESS DISHWASHER HAS AN INTEGRAL BACKFLOW PREVENTER.
- CONNECT 1/2" CW TO ICE MACHINE WITH BALL VALVE AND WATTS SERIES LF7 DUAL CHECK VALVE. VERIFY EXACT LOCATION AND SIZE OF CONNECTION WITH EQUIPMENT SUPPLIER.
- CONNECT 1/2" CW TO COFFEE MACHINE WITH BALL VALVE AND WATTS SERIES LF7 DUAL CHECK VALVE. VERIFY EXACT LOCATION AND SIZE OF CONNECTION WITH EQUIPMENT SUPPLIER.
- BALANCING STATION: PROVIDE BRONZE CALIBRATED BALANCING VALVE, CHECK VALVE, AND THERMOWELL.

SEE FUTURE SCHEDULE ON SHEET P002 FOR SIZES OF WATER CONNECTIONS TO INDIVIDUAL FIXTURES.

ALL WATER PIPING AND ALL GAS PIPING SHOWN ON THIS SHEET SHALL BE RUN ABOVE CEILINGS IN AREAS WITH CEILINGS AND SHALL BE RUN AS HIGH AS POSSIBLE IN AREAS WITHOUT CEILINGS, UNLESS OTHERWISE NOTED.

REVISIONS		
No.	Date	Description
1		

Information contained on this drawing and in all digital files associated is authorized for use on the project named herein only and is the property of MISHRA ARCHITECTURE PLLC and may not be reproduced in any manner without express written or verbal permission from authorized individuals. Original drawing is 24"x36" and scales are as indicated. © 2013 MISHRA ARCHITECTURE PLLC



KEY PLAN

Shiva Southaven Inc.

Holiday Inn Express & Suites

Lot 16 (Rev Lot 3) Southcrest Pkwy.  
Southwest Subdivision  
Southaven, MS 38671

Drawing Title  
**Plumbing  
Enlarged Plans  
Water and Gas**

Phase  
Construction Documents

Project No.	14-081	Sheet No.	
Prepared by	MJS		P206
Checked by	EDB		
Date	Feb. 27, 2015		

Holiday Inn Express & Suites