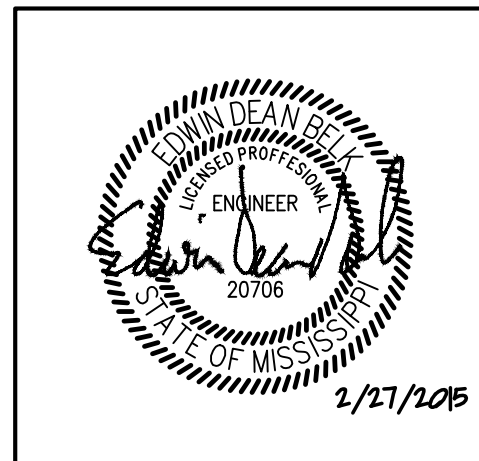


REVISIONS		
No.	Date	Description
1		

Information contained on this drawing and in all digital files associated is authorized for use on the project named herein only and is the property of MISHRA ARCHITECTURE PLLC and may not be reproduced in any manner without express written or verbal permission from authorized individuals. Original drawing is 24"x36" and scales are as indicated.© 2013 MISHRA ARCHITECTURE PLLC



KEY PLAN

Shiva Southaven
Inc.

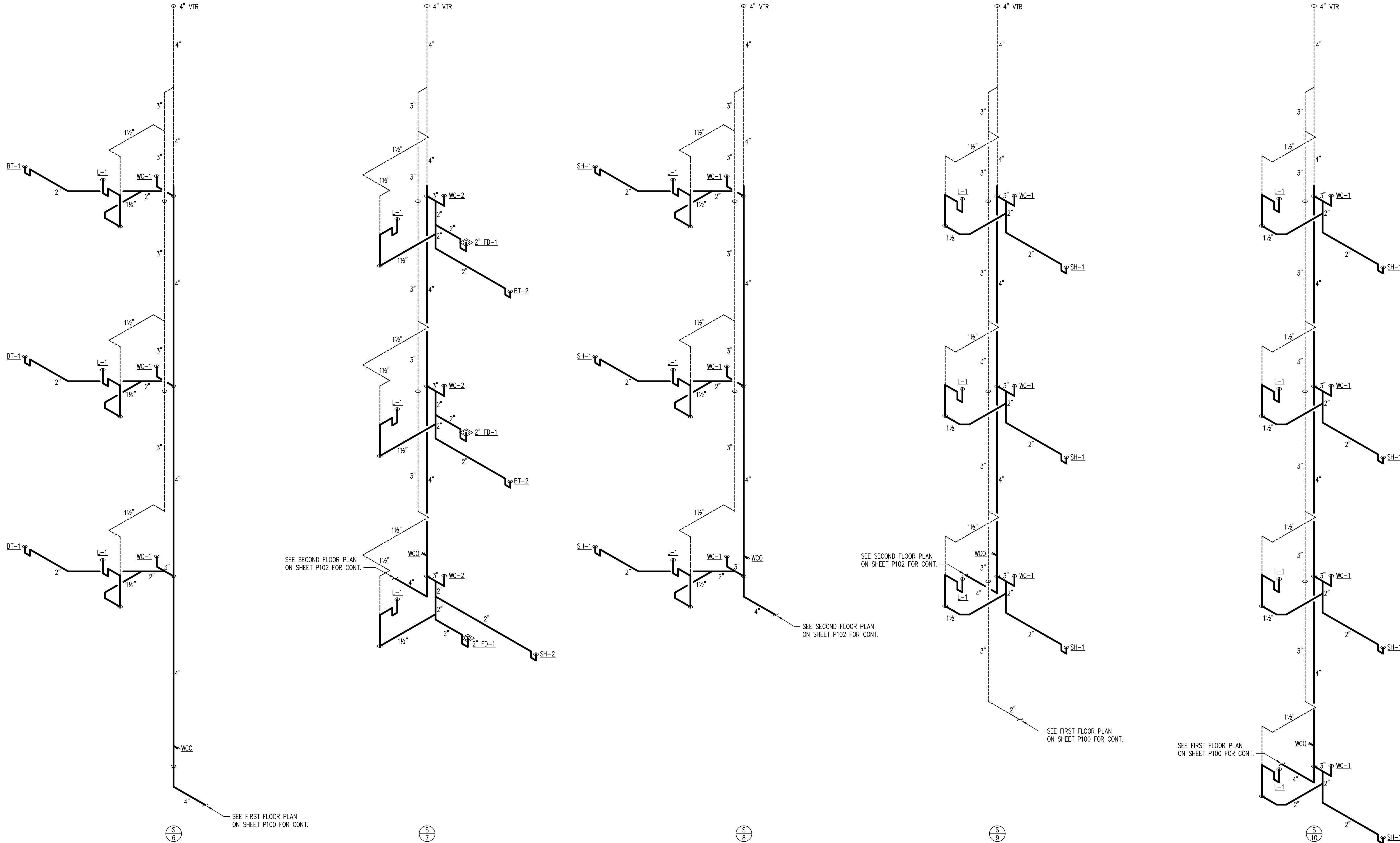
Holiday Inn Express
& Suites

Lot 16 (Rev Lot 3) Southcrest
Pkwy.
Southcrest Subdivision
Southaven, MS 38671

Drawing Title
**Plumbing
Riser Diagrams
Sanitary**

Phase
Construction Documents

Project No.	14-081	Sheet No.	P302
Prepared by	MJS		
Checked by	EDB		
Date	Feb. 27, 2015		



SEE ENLARGED TYPICAL GUEST ROOM PLANS ON SHEETS P201 AND P202 FOR ADDITIONAL INFORMATION.

SEE FIXTURE SCHEDULE ON SHEET P002 FOR SIZES OF SANITARY AND VENT CONNECTIONS TO INDIVIDUAL FIXTURES.

ALL RISER DIAGRAMS ARE SCHEMATIC AND ARE NOT TO SCALE. PROVIDE OFFSETS AS NECESSARY BETWEEN FLOORS.