

MISHRA
ARCHITECTURE PLLC

6800 S Creek Rd., Charlotte, NC 28277
Ph: (704) 625-6554 Fax: (704) 919-5822
EMAIL: ashish@mishraarch.com
WEB: www.mishraarch.com

CIVIL:
Benchmark Engineering and Surveying
101 Highpointe Court, Suite B
Brandon, MS 39042
Phone: (601) 591-1077
Fax: (601) 591-0177
Email: mikes@bellsouth.net

STRUCTURAL:
WGPM, Inc.
11220 Elm Lane, Suite 201
Charlotte, NC 28277
Phone: (704) 542-7199
Fax: (704) 542-7195
Email: lwright@wgpmc.com

MEP:
Allied Consulting Engineers
2905-D Queen City Drive
Charlotte, NC 28208
Phone: (704) 399-3943
Email: asoler@allied-engineers.com

REVISIONS		
No.	Date	Description

Information contained on this drawing and in all digital files associated is authorized for use on the project named herein only and is the property of MISHRA ARCHITECTURE PLLC and may not be reproduced in any manner without express written or verbal permission from authorized individuals. Original drawing is 24"x36" and scales are as indicated. © 2013 MISHRA ARCHITECTURE PLLC

KEY PLAN

Shiva Southaven Inc.

Holiday Inn Express & Suites

Lot 16 (Rev Lot 3) Southcrest Pkwy.
Southcrest Subdivision
Southaven, MS 38671

Drawing Title
Foundation and Floor Slab Plan

Phase
Construction Documents

Project No.	14-081	Sheet No.	S101
Prepared by	AEB		
Checked by	HLW		
Date	Feb. 27, 2015		

Review

NOTE!
ALL REACTIONS HAVE BEEN REDUCED
NO FURTHER REDUCTION OF LOADS
OR INCREASE OF ALLOWABLE
STRESSES IS PERMITTED

NOTE!
SEE 9/302 FOR THICKENED SLAB UNDER
WASHER - COORDINATE W/ ARCH. AND
PLUMBING DWGS.

NOTE!
SEE SHEET S002 FOR WALL
STUD SCHEDULE - TYP.

NOTE:
GENERAL CONTRACTOR SHALL
COORDINATE/VERIFY ALL DIMENSIONS
WITH ARCHITECTURAL DRAWINGS

NOTE:
CONTRACT DRAWINGS SHALL NOT
BE USED AS SHOP DRAWINGS

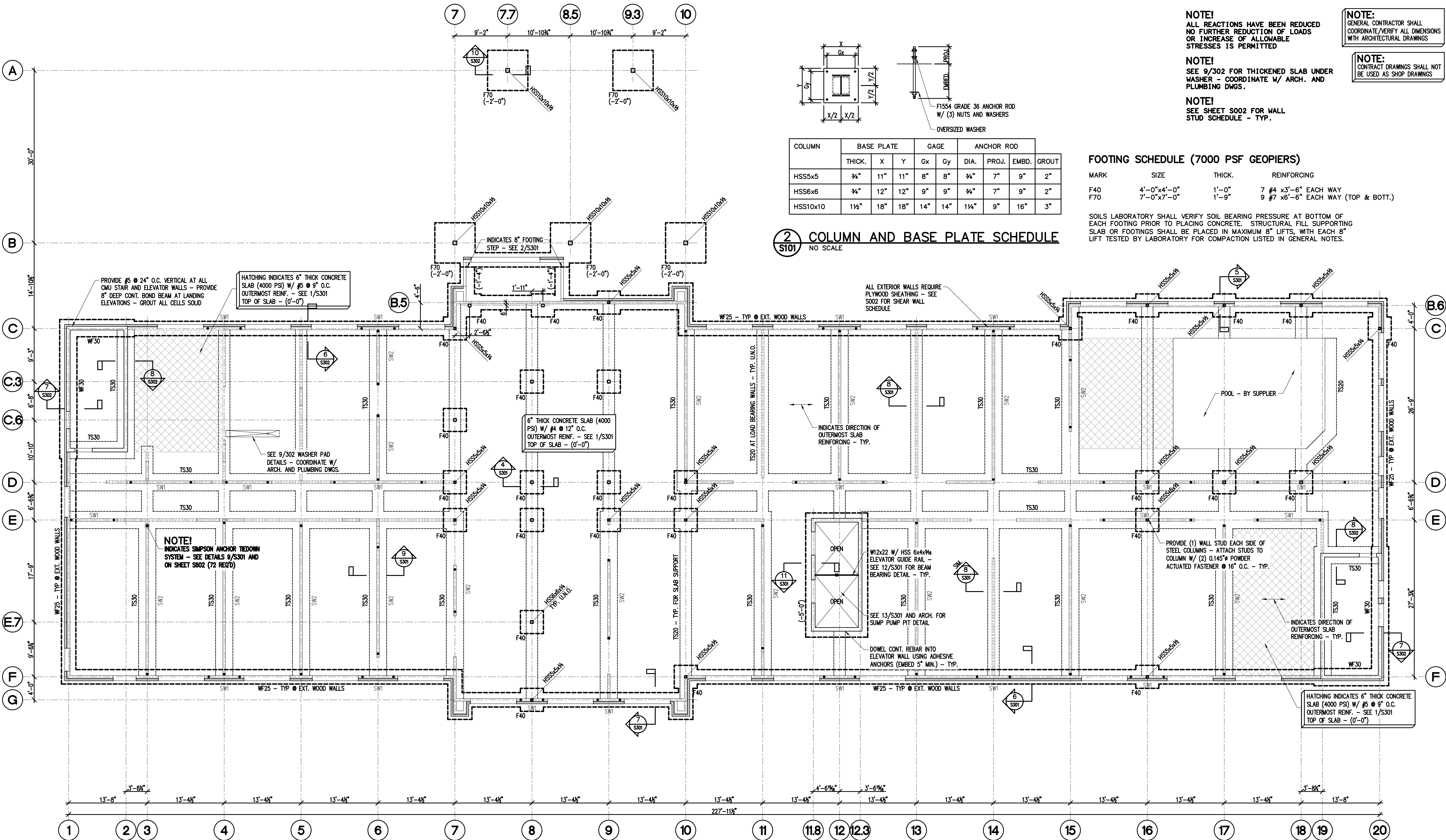
FOOTING SCHEDULE (7000 PSF GEOPIERS)

MARK	SIZE	THICK.	REINFORCING
F40	4'-0"x4'-0"	1'-0"	7 #4 x3'-6" EACH WAY
F70	7'-0"x7'-0"	1'-9"	9 #7 x6'-6" EACH WAY (TOP & BOTT.)

SOILS LABORATORY SHALL VERIFY SOIL BEARING PRESSURE AT BOTTOM OF EACH FOOTING PRIOR TO PLACING CONCRETE. STRUCTURAL FILL SUPPORTING SLAB OR FOOTINGS SHALL BE PLACED IN MAXIMUM 8" LIFTS, WITH EACH 8" LIFT TESTED BY LABORATORY FOR COMPACTION LISTED IN GENERAL NOTES.

COLUMN	BASE PLATE			GAGE		ANCHOR ROD		
	THICK.	X	Y	Gx	Gy	DIA.	PROJ.	EMBD.
HSS5x5	3/4"	11"	11"	8"	8"	3/4"	7"	2"
HSS6x6	3/4"	12"	12"	9"	9"	3/4"	7"	2"
HSS10x10	1 1/2"	18"	18"	14"	14"	1 1/4"	9"	3"

2 COLUMN AND BASE PLATE SCHEDULE S101 NO SCALE



NOTE!
ALL OUTERMOST SLAB REINFORCING AT END SPANS SHALL HAVE 90° STD. HOOK

NOTE!
GEOTECHNICAL ENGINEER SHALL VERIFY REQUIREMENTS FOR VOID SPACE WITH CARDBOARD FORMS UNDER STRUCTURAL FIRST FLOOR SLAB. GENERAL CONTRACTOR SHALL COORDINATE.

WALL FOOTING SCHEDULE 7,000 PSF SOIL BEARING (GEOPIERS)					
MARK	WIDTH	THICK.	LONG. REINF.	TRANSVERSE REINF.	COMMENTS
TS20	2'-0"	1'-0"	(3) #4 BOTTOM	#4x1'-6" @ 24" O.C. BOTTOM	SEE 8/S301
TS30	3'-0"	1'-3"	(4) #5 BOTTOM	#4x2'-6" @ 14" O.C. BOTTOM	SEE 9/S301 SEE 8/S302
WF25	2'-6"	1'-0"	(3) #5 BOTTOM	#4x2'-0" @ 18" O.C. BOTTOM	SEE 6/S301
WF30	3'-0"	1'-3"	(4) #3 TOP (4) #5 BOTTOM	#4x2'-6" @ 14" O.C. TOP #4x2'-6" @ 14" O.C. BOTTOM	SEE 7/S302

SOILS LABORATORY SHALL VERIFY SOIL BEARING PRESSURE AT BOTTOM OF EACH FOOTING PRIOR TO PLACING CONCRETE. STRUCTURAL FILL SUPPORTING SLAB OR FOOTINGS SHALL BE PLACED IN MAXIMUM 8" LIFTS, WITH EACH 8" LIFT TESTED BY LABORATORY FOR COMPACTION LISTED IN GENERAL NOTES.

1 FOUNDATION AND FLOOR SLAB PLAN S101

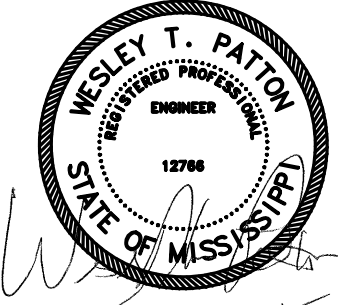
- NOTES:
- ALL ELEVATIONS REFERENCED () FROM FINISH FLOOR ELEVATION 325.33' (0'-0").
 - INTERIOR TOP OF FOOTING - T.O.F. (-1'-4") TYPICAL UNLESS NOTED OTHERWISE.
 - EXTERIOR TOP OF FOOTING - T.O.F. (-1'-4") TYPICAL UNLESS NOTED OTHERWISE.
 - CONTRACT DRAWINGS SHALL NOT BE USED FOR SHOP DRAWINGS.
 - SEE SHEET S001 AND S002 FOR GENERAL NOTES, WALL STUDS AND WALL SHEATHING NOTES.
 - ALL FOOTING STEPS 16" TYPICAL UNLESS NOTED OTHERWISE - SEE 2/S301.
 - SW1 INDICATES SHEAR WALL 1 - SEE SHEAR WALL SCHEDULE ON SHEET S002 TYPICAL.

TYPICAL WOOD FRAMING NOTES

- ALL WALLS LABELED SW1 AND SW2 ARE SHEAR WALLS. SEE SHEET S002 FOR SHEAR WALL SCHEDULE.
- SEE SHEET S002 FOR WALL STUDS AND PLYWOOD/OSB WALL SHEATHING - TYP.
- SEE 10/S401 FOR HOLE IN I-JOIST - GENERAL CONTRACTOR TO VERIFY/COORDINATE WITH I-JOIST SUPPLIER - TYP.
- WOOD I-JOISTS SHALL BE DESIGNED FOR ALL ADDITIONAL LOADS SHOWN ON FRAMING PLANS AND PROVIDE ADDITIONAL I-JOISTS IF REQUIRED.



WGPM, Inc.
Fright - Olson - Patton
STRUCTURAL ENGINEERING
11220 Elm Lane, Suite 201
Charlotte, North Carolina 28277
704-542-7199 Fax: 704-542-7195
www.wgpmc.com
JOB NUMBER: 128-14



Holiday Inn Express & Suites