



CIVIL:
Benchmark Engineering and Surveying
101 Highpointe Court, Suite B
Brandon, MS 39042
Phone: (601) 591-1077
Fax: (601) 591-0177
Email: mikebes@bellsouth.net

MEP:
Allied Consulting Engineers
2905-D Queen City Drive
Charlotte, NC 28208
Phone: (704) 399-3943
Email: asoler@allied-engineers.com

Information contained on this drawing and in all digital files associated is authorized for use on the project named herein only and is the property of MISHRA ARCHITECTURE PLLC and may not be reproduced in any manner without express written or verbal permission from authorized individuals. Original drawing is 24"x36" and scales are as indicated. © 2013 MISHRA ARCHITECTURE PLLC

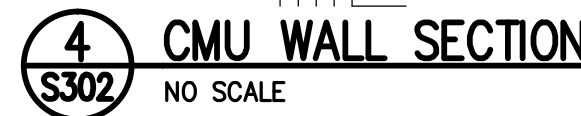
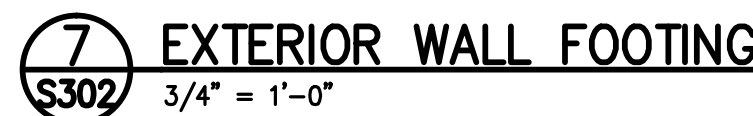
KEY PLAN

Holiday Inn Express
& Suites

Drawing Title

Project No.	14-081	Sheet No. S302
Prepared by	AEB	
Checked by	HLW	
Date	Feb. 27, 2015	

Holiday Inn Express & Suites



Holiday Inn Express
& Suites

Drawing Title

Project No.	14-081	Sheet No. S302
Prepared by	AEB	
Checked by	HLW	
Date	Feb. 27, 2015	

Review

