

NOTE!
SEE ARCH. DWGS. FOR NOTES
AND DETAILS NOT SHOWN - TYP.

SEE ARCH. DWGS. FOR EXTERIOR
FINISHES - TYP.

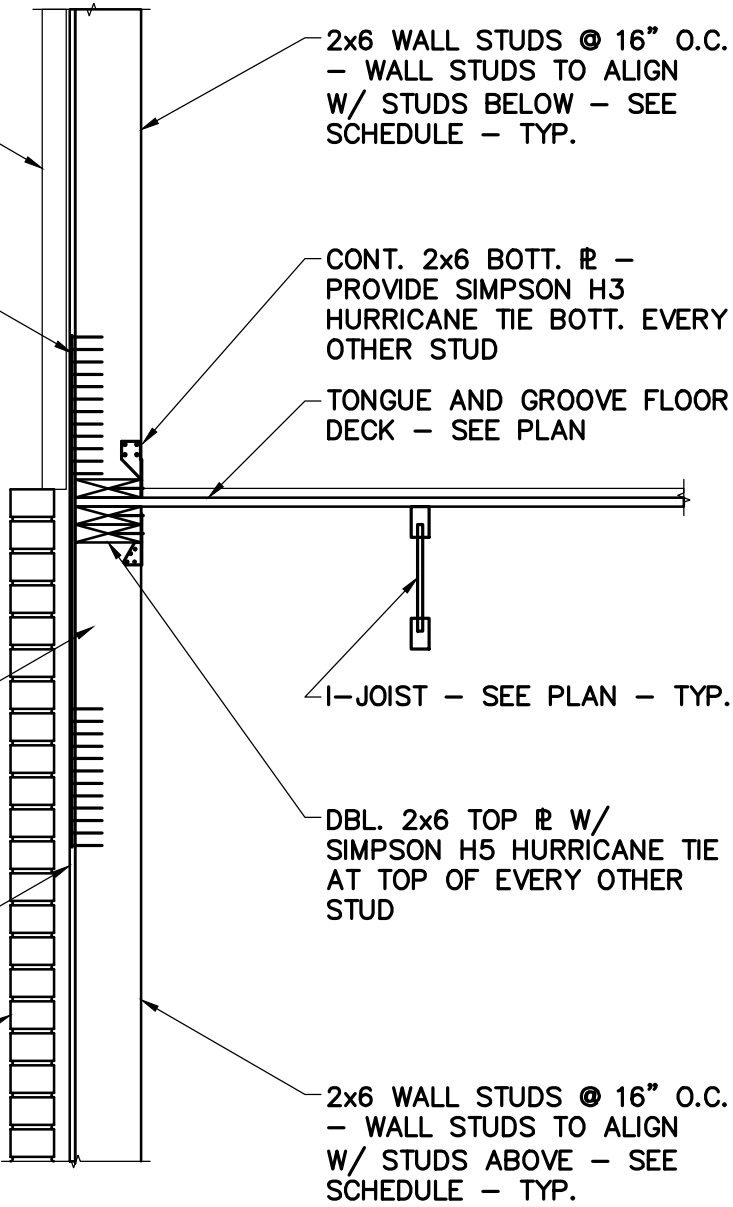
SIMPSON CS16 STRAP @ 32"
O.C. - 42" LONG W/ 12 -
10d NAILS EACH END (12"
MIN. LAP OVER STUD)

J.B.
(SEE PLAN)

PROVIDE SOLID WOOD BLOCKING
BELOW STUDS THAT DO NOT
ALIGN WITH TRUSS - TYPICAL

PLYWOOD/OSB WALL SHEATHING
- SEE PLAN - LAP OVER
FLOOR - TYP.

MASONRY VENEER AT 1ST
FLOOR ONLY - SEE ARCH.



1 SECTION AT FLOOR
S401 3/4" = 1'-0"

NOTE!
SEE ARCH. DWGS. FOR NOTES
AND DETAILS NOT SHOWN - TYP.

SEE ARCH. DWGS. FOR EXTERIOR
FINISHES - TYP.

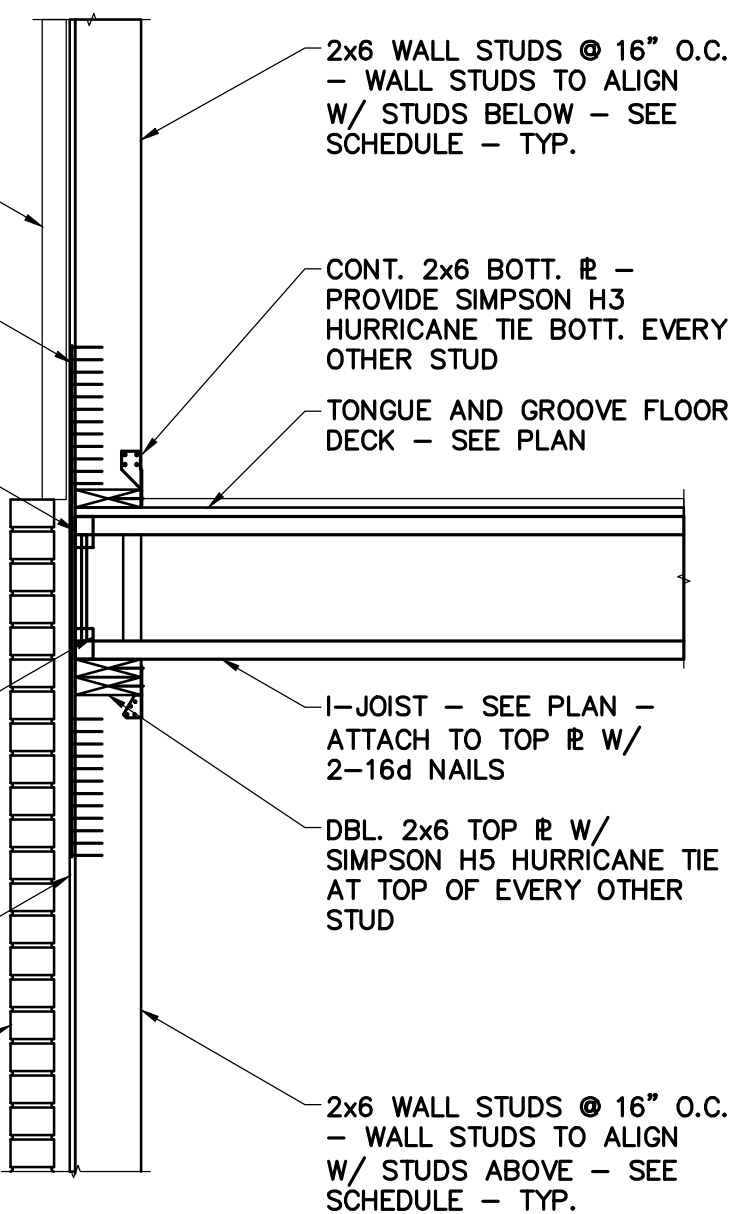
SIMPSON CS16 STRAP @ 32"
O.C. - 42" LONG W/ 12 -
10d NAILS EACH END (12"
MIN. LAP OVER STUD)

J.B.
(SEE PLAN)

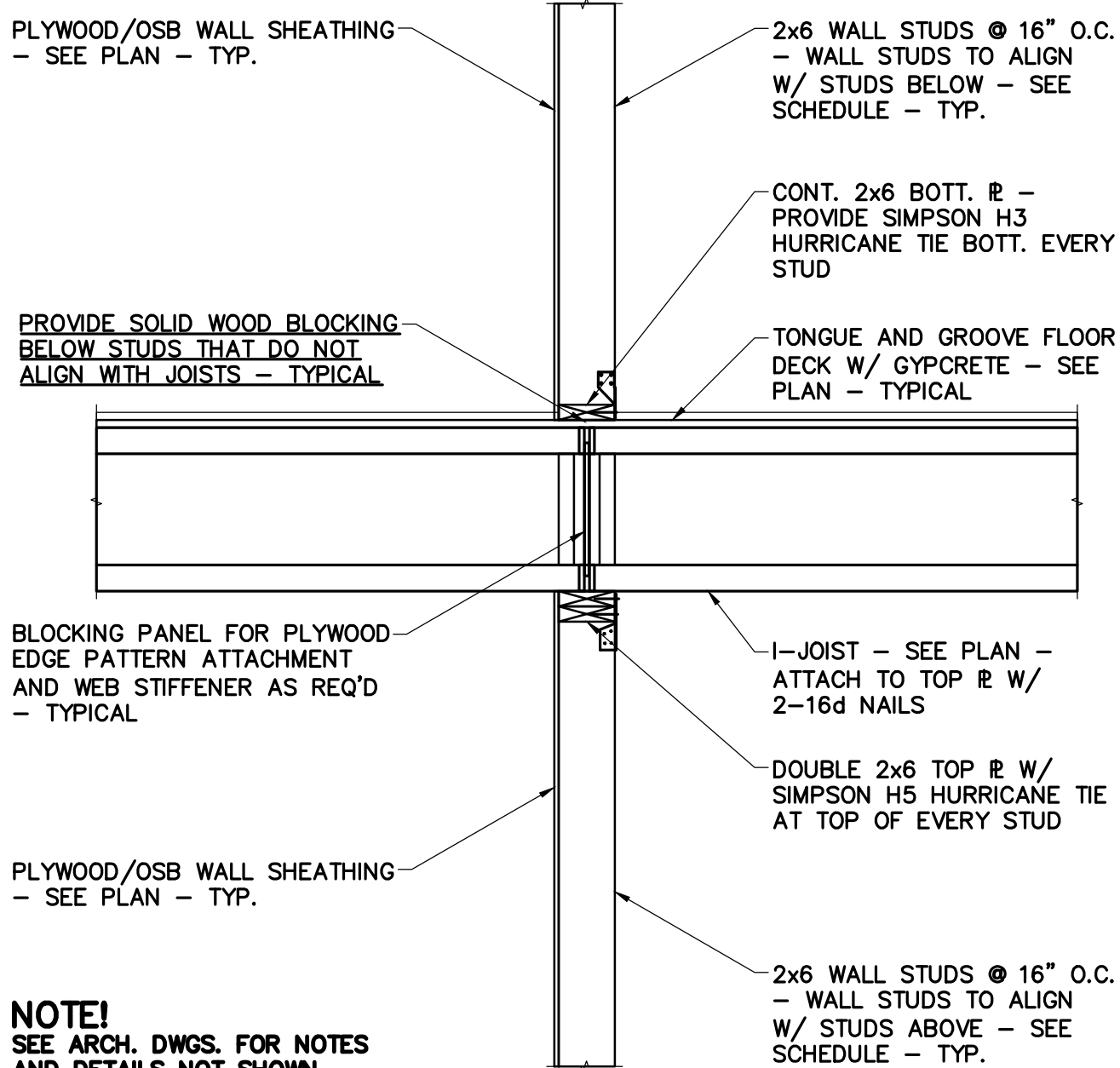
PROVIDE SOLID WOOD BLOCKING
BELOW STUDS THAT DO NOT
ALIGN WITH TRUSS - TYPICAL

PLYWOOD/OSB WALL SHEATHING
- SEE PLAN - LAP OVER
FLOOR - TYP.

MASONRY VENEER AT 1ST
FLOOR ONLY - SEE ARCH.



5 SECTION AT FLOOR
S401 3/4" = 1'-0"



NOTE!
SEE ARCH. DWGS. FOR NOTES
AND DETAILS NOT SHOWN - TYP.

9 INTERIOR LOAD BEARING SHEAR WALL
S401 3/4" = 1'-0"

NOTE!
GENERAL CONTRACTORS OPTION TO USE
SECTIONS 1 & 2/S401 OR 3 & 4/S401

NOTE!
SEE OTHER SECTIONS FOR NOTES
AND DETAILS NOT SHOWN - TYP.

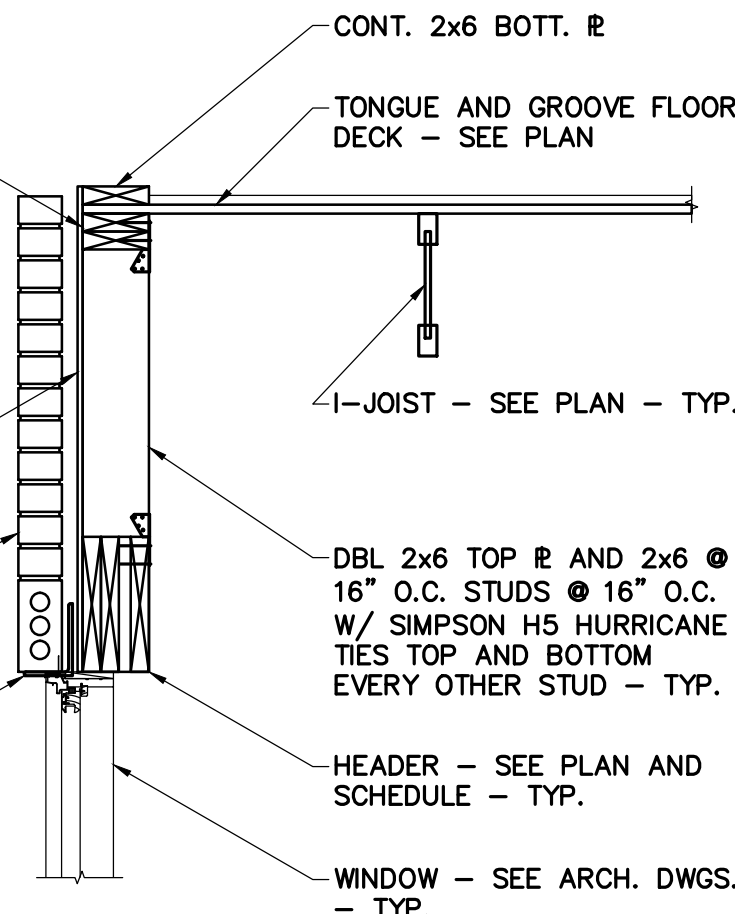
BLOCKING PANEL FOR PLYWOOD
EDGE PATTERN ATTACHMENT
AND WEB STIFFENER AS REQ'D
- TYPICAL

J.B.
(SEE PLAN)

PLYWOOD/OSB WALL SHEATHING
- SEE PLAN - LAP OVER
FLOOR - TYP.

MASONRY VENEER AT 1ST
FLOOR ONLY - SEE ARCH.

LOOSE BRICK SHELF ANGLE - SEE
PLAN - PROVIDE 8" MIN. BRG.
OVER SOLID MASONRY - TYP.



2 SECTION AT FLOOR
S401 3/4" = 1'-0"

NOTE!
SEE ARCH. DWGS. FOR NOTES
AND DETAILS NOT SHOWN - TYP.

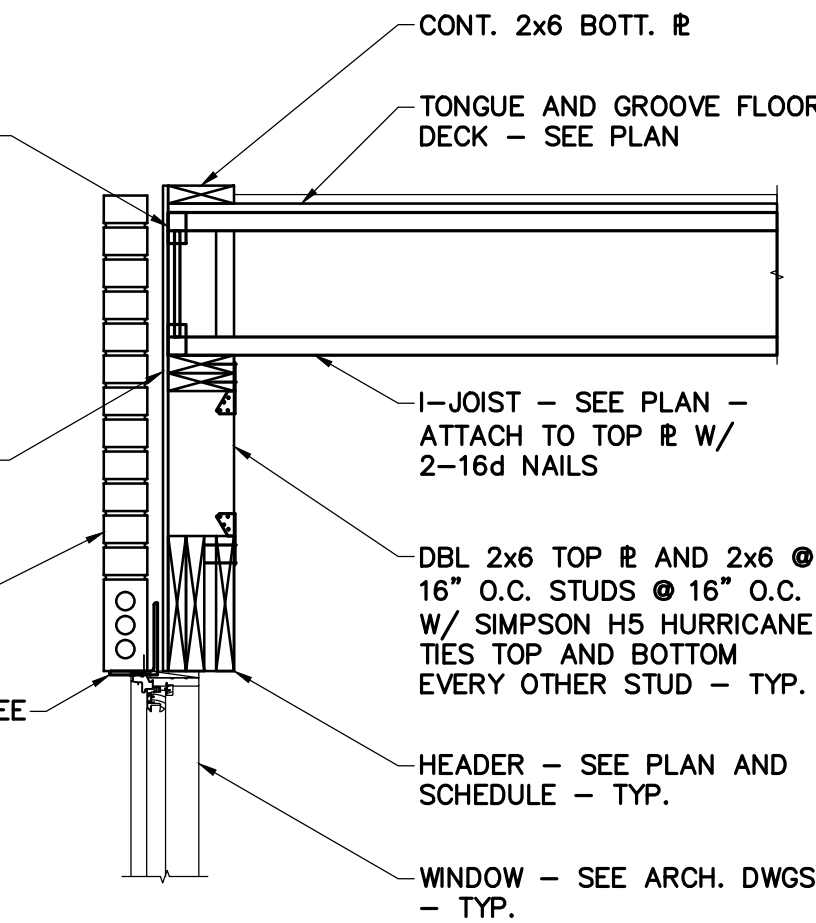
BLOCKING PANEL FOR PLYWOOD
EDGE PATTERN ATTACHMENT
AND WEB STIFFENER AS REQ'D
- TYPICAL

J.B.
(SEE PLAN)

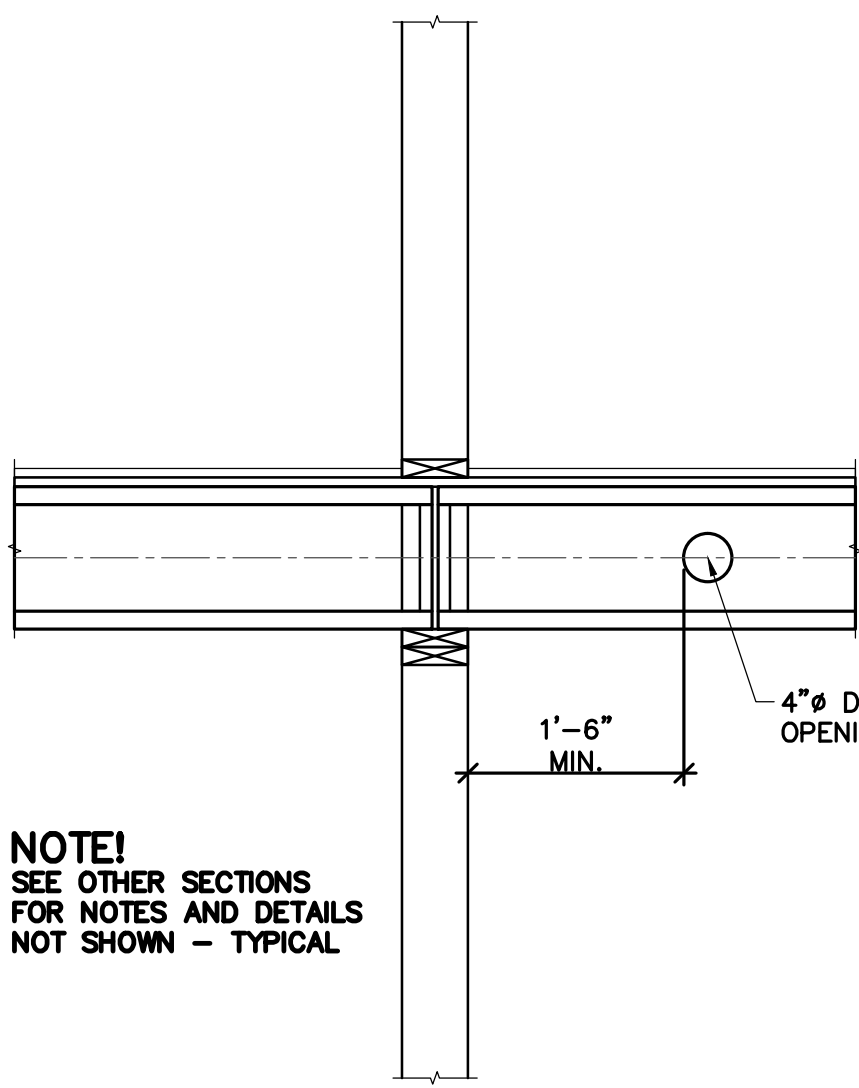
PLYWOOD/OSB WALL SHEATHING
- SEE PLAN - LAP OVER
FLOOR - TYP.

MASONRY VENEER AT 1ST
FLOOR ONLY - SEE ARCH.

LOOSE BRICK SHELF ANGLE - SEE
PLAN - PROVIDE 8" MIN. BRG.
OVER SOLID MASONRY - TYP.

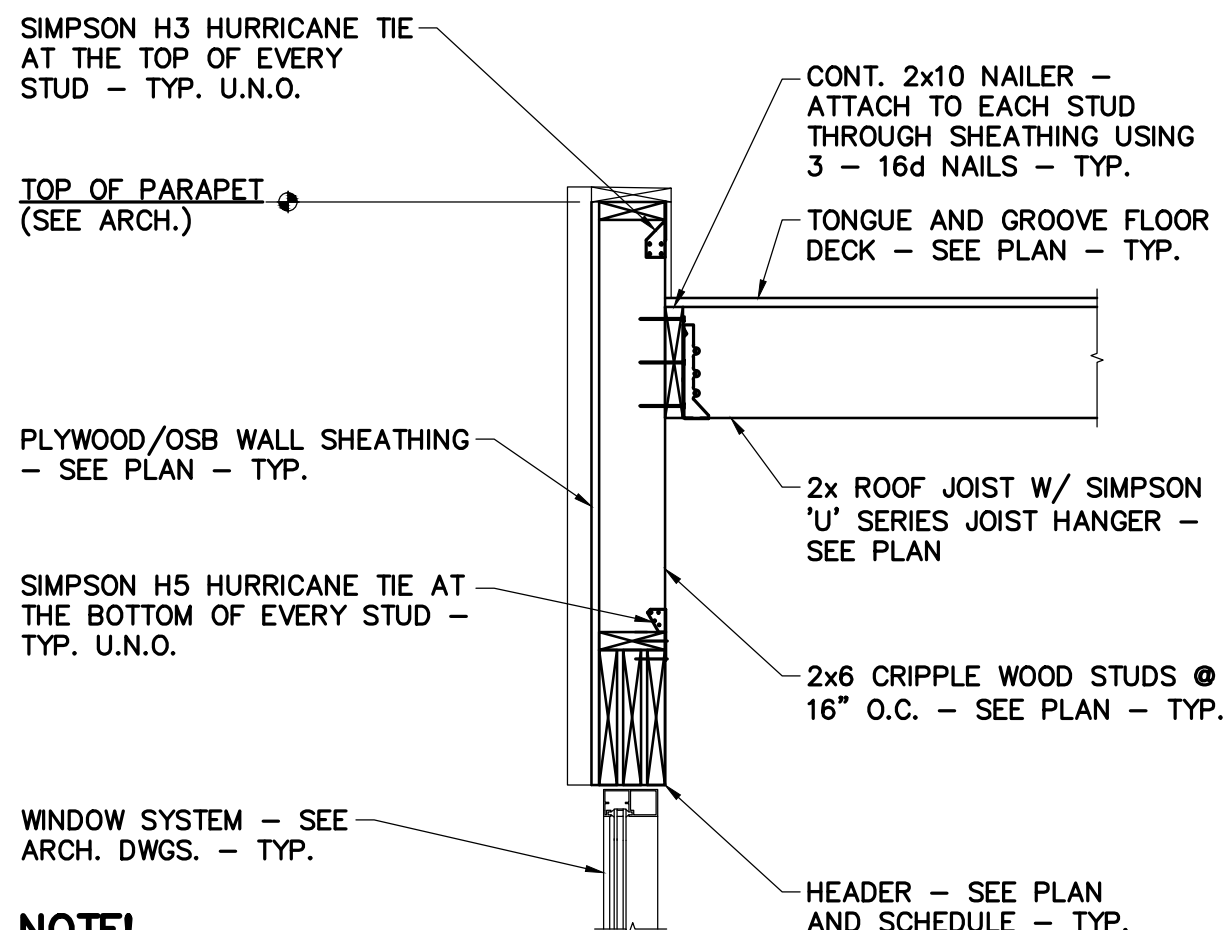


6 SECTION AT FLOOR
S401 3/4" = 1'-0"



NOTE!
SEE OTHER SECTIONS
FOR NOTES AND DETAILS
NOT SHOWN - TYPICAL

10 HOLE IN 1-6 JOIST
S401 3/4" = 1'-0"



NOTE!
SEE ARCH. DWGS. FOR NOTES
AND DETAILS NOT SHOWN - TYP.

11 LOW ROOF FRAMING
S401 3/4" = 1'-0"

NOTE!
SEE ARCH. DWGS. FOR NOTES
AND DETAILS NOT SHOWN - TYP.

SEE ARCH. DWGS. FOR EXTERIOR
FINISHES - TYP.

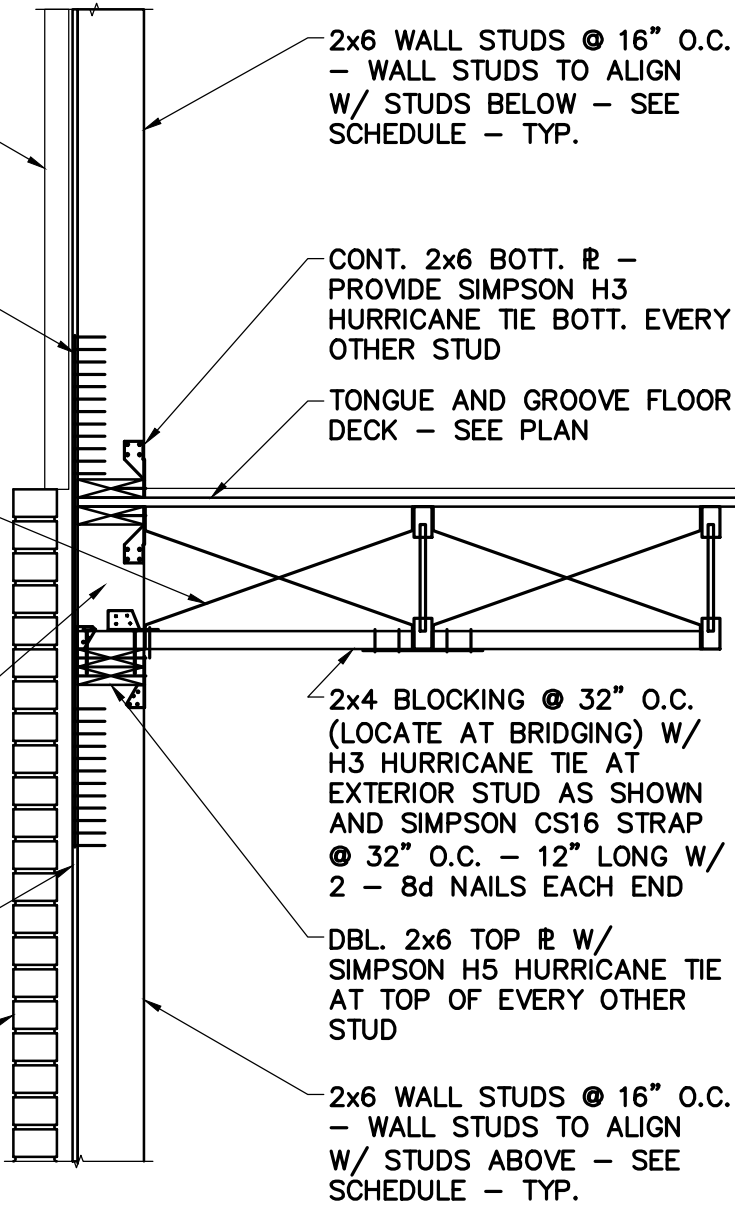
SIMPSON CS16 STRAP @ 32"
O.C. - 42" LONG W/ 12 -
10d NAILS EACH END (12"
MIN. LAP OVER STUD)

J.B.
(SEE PLAN)

PROVIDE SOLID WOOD BLOCKING
BELOW STUDS THAT DO NOT
ALIGN WITH TRUSS - TYPICAL

PLYWOOD/OSB WALL SHEATHING
- SEE PLAN - LAP OVER
FLOOR - TYP.

MASONRY VENEER AT 1ST
FLOOR ONLY - SEE ARCH.



3 SECTION AT FLOOR
S401 3/4" = 1'-0"

NOTE!
GENERAL CONTRACTORS OPTION TO
USE SECTIONS 7/S401 OR 8/S401

SEE ARCH. DWGS. FOR EXTERIOR
FINISHES - TYP.

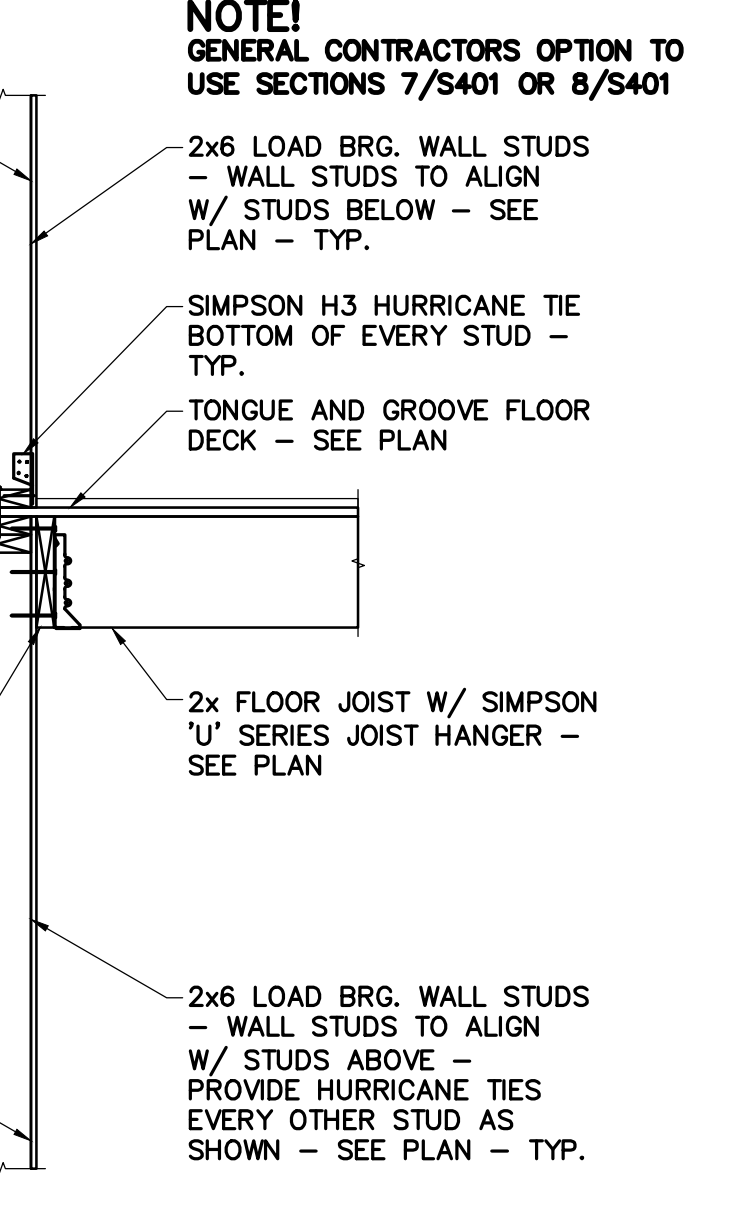
SIMPSON SDS25412 @ 16" O.C.
(OR EQUIVALENT) - TYP.

J.B.
(SEE PLAN)

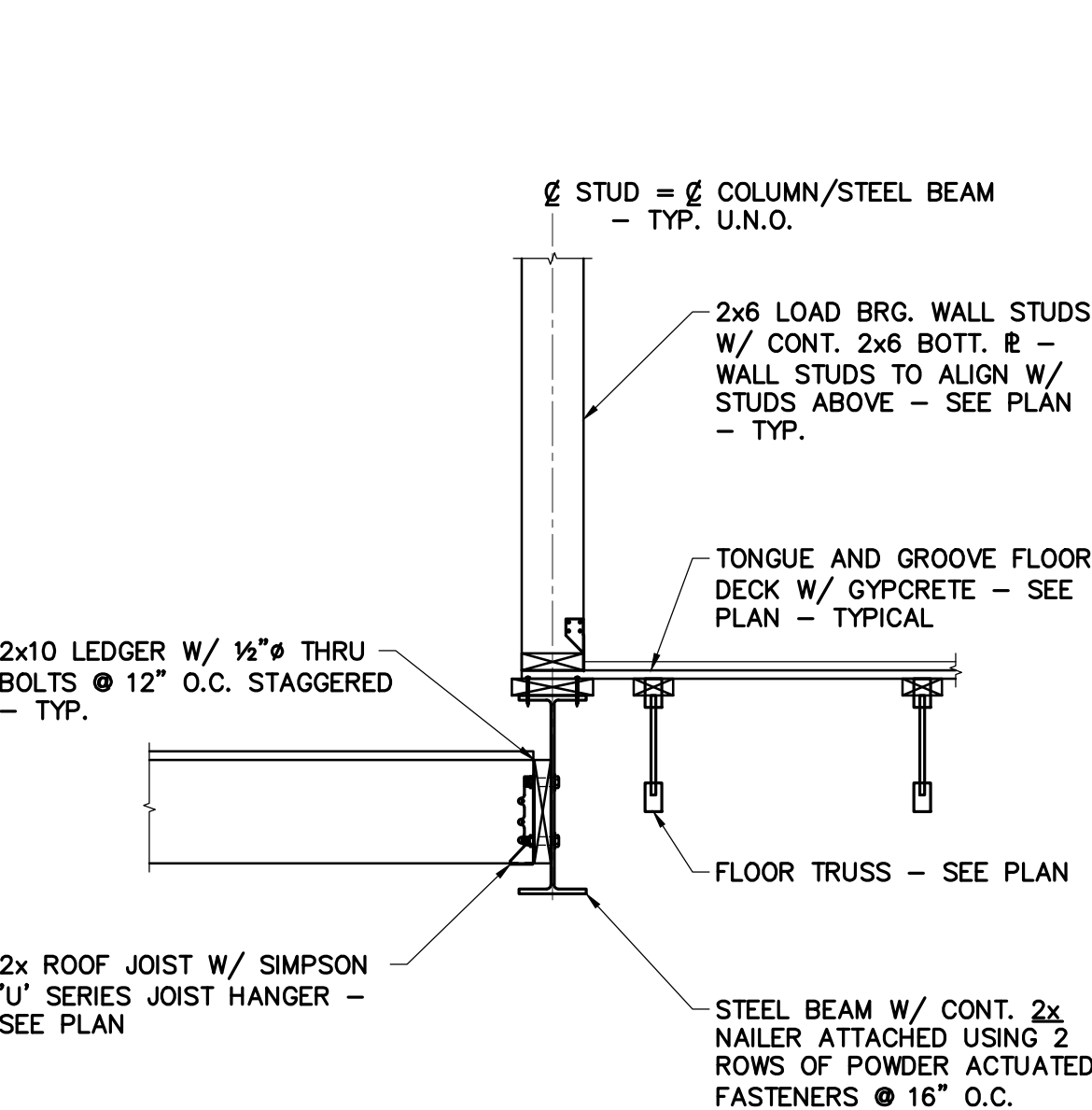
PROVIDE SOLID WOOD BLOCKING
BELOW STUDS THAT DO NOT
ALIGN WITH TRUSS - TYPICAL

PLYWOOD/OSB WALL SHEATHING
- SEE PLAN - LAP OVER
FLOOR - TYP.

MASONRY VENEER AT 1ST
FLOOR ONLY - SEE ARCH.



7 SECTION AT CORRIDOR
S401 3/4" = 1'-0"



12 SECTION AT STEEL BEAM
S401 3/4" = 1'-0"

NOTE!
GENERAL CONTRACTORS OPTION TO USE
SECTIONS 1 & 2/S401 OR 3 & 4/S401

NOTE!
SEE OTHER SECTIONS FOR NOTES
AND DETAILS NOT SHOWN - TYP.

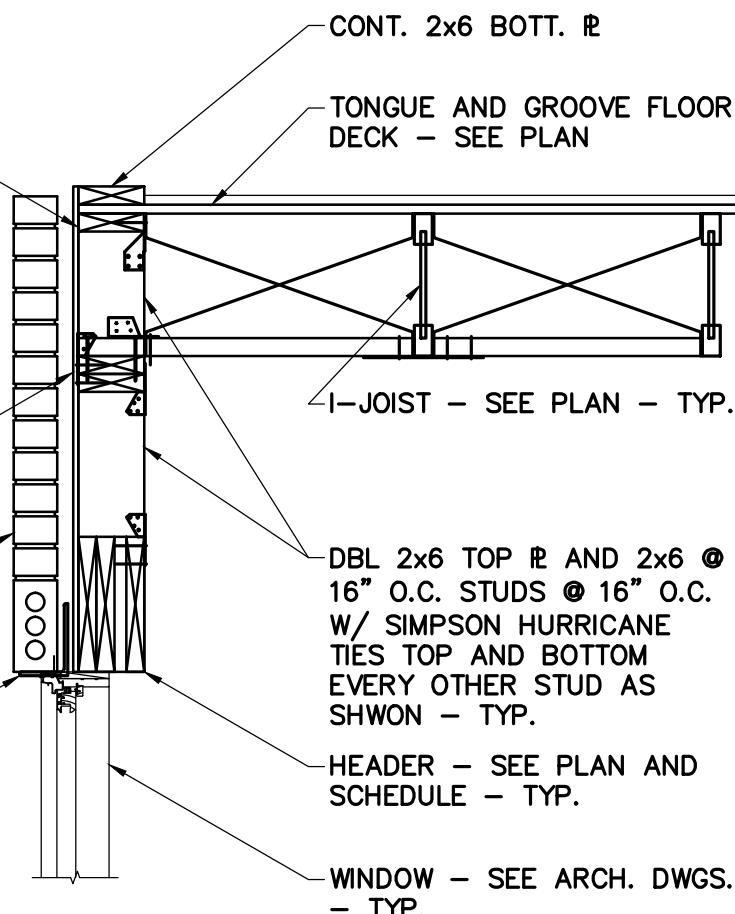
BLOCKING PANEL FOR PLYWOOD
EDGE PATTERN ATTACHMENT
AND WEB STIFFENER AS REQ'D
- TYPICAL

J.B.
(SEE PLAN)

PLYWOOD/OSB WALL SHEATHING
- SEE PLAN - LAP OVER
FLOOR - TYP.

MASONRY VENEER AT 1ST
FLOOR ONLY - SEE ARCH.

LOOSE BRICK SHELF ANGLE - SEE
PLAN - PROVIDE 8" MIN. BRG.
OVER SOLID MASONRY - TYP.



4 SECTION AT FLOOR
S401 3/4" = 1'-0"

NOTE!
GENERAL CONTRACTORS OPTION TO
USE SECTIONS 7/S401 OR 8/S401

SEE ARCH. DWGS. FOR EXTERIOR
FINISHES - TYP.

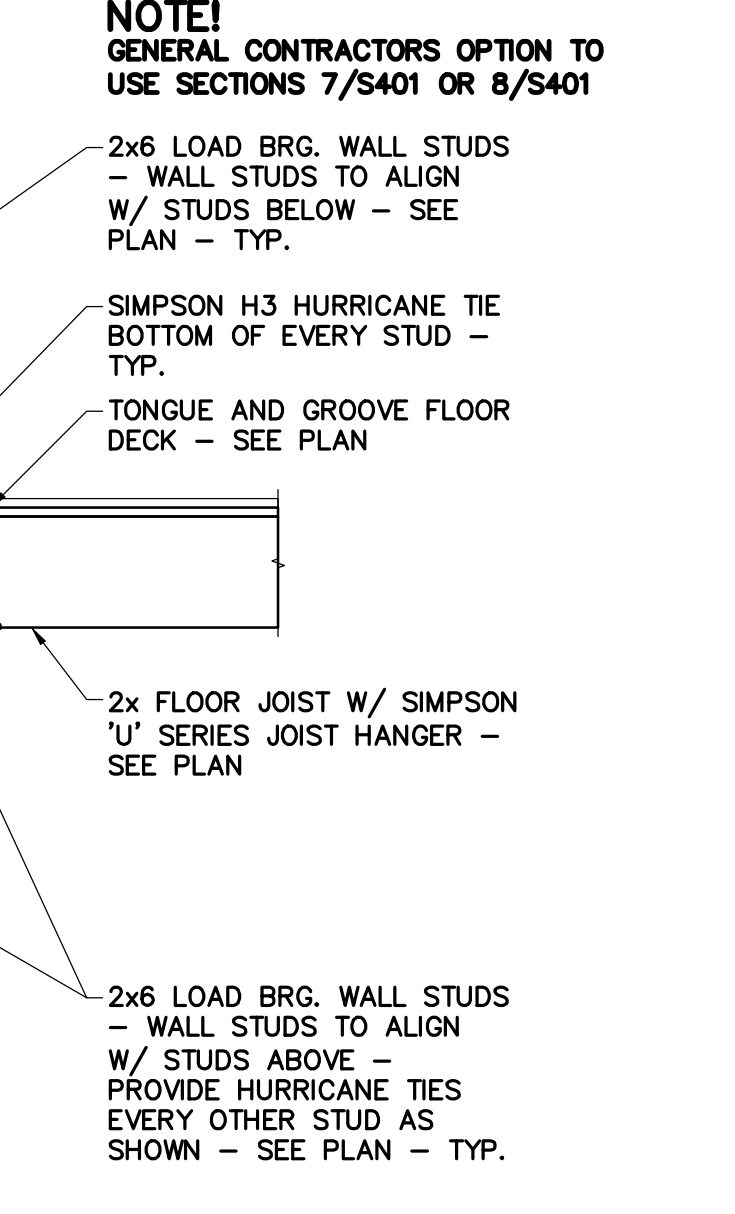
SIMPSON SDS25412 @ 16" O.C.
(OR EQUIVALENT) - TYP.

J.B.
(SEE PLAN)

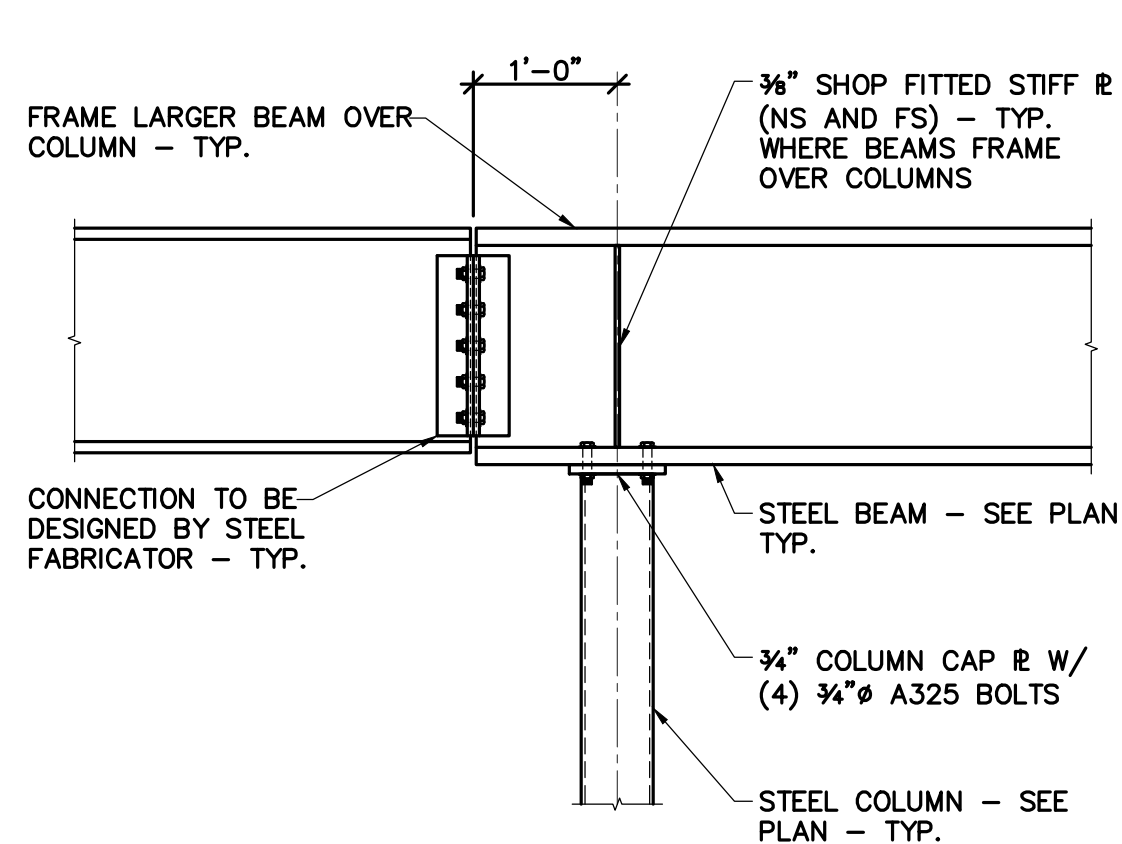
PROVIDE SOLID WOOD BLOCKING
BELOW STUDS THAT DO NOT
ALIGN WITH TRUSS - TYPICAL

PLYWOOD/OSB WALL SHEATHING
- SEE PLAN - LAP OVER
FLOOR - TYP.

MASONRY VENEER AT 1ST
FLOOR ONLY - SEE ARCH.



8 SECTION AT CORRIDOR
S401 3/4" = 1'-0"



13 BEAM CANTILEVERING OVER COLUMN
S401 3/4" = 1'-0"

WGPM, Inc.
Fright - Olson - Patton
STRUCTURAL ENGINEERING
11220 Elm Lane, Suite 201
Charlotte, North Carolina 28277
704-542-7199 Fax: 704-542-7195
www.wgpmc.com
JOB NUMBER: 128-14

WESLEY T. PATTON
REGISTERED PROFESSIONAL ENGINEER
STATE OF MISSISSIPPI
12788
02-27-15

MISHRA
ARCHITECTURE PLLC
6800 S Creek Rd., Charlotte, NC 28277
Ph: (704) 625-6554 Fax: (704) 919-5822
EMAIL: ashish@mishraarch.com
WEB: www.mishraarch.com

CIVIL
Benchmark Engineering and Surveying
101 Highpointe Court, Suite B
Brandon, MS 39042
Phone: (601) 591-1077
Fax: (601) 591-0177
Email: mikes@bellsouth.net

STRUCTURAL:
WGPM, Inc.
11220 Elm Lane, Suite 201
Charlotte, NC 28277
Phone: (704) 542-7199
Fax: (704) 542-7195
Email: lwright@wgpmc.com

MEP:
Allied Consulting Engineers
2905-D Queen City Drive
Charlotte, NC 28208
Phone: (704) 399-3943
Email: asoler@allied-engineers.com

REVISIONS		
No.	Date	Description

Information contained on this drawing and in all digital files associated is authorized for use on the project named herein only and is the property of MISHRA ARCHITECTURE PLLC and may not be reproduced in any manner without express written or verbal permission from authorized individuals. Original drawing is 24"x36" and scales are as indicated. © 2013 MISHRA ARCHITECTURE PLLC

KEY PLAN

Shiva Southaven Inc.

Holiday Inn Express & Suites

Lot 16 (Rev Lot 3) Southcrest Pkwy.
Southcrest Subdivision
Southaven, MS 38671

Drawing Title

Floor Framing Sections and Details

Phase

Construction Documents

Project No.

14-081

Prepared by

AEB

Checked by

HLW

Date

Feb. 27, 2015

Review

Sheet No.

S401

Holiday Inn Express & Suites