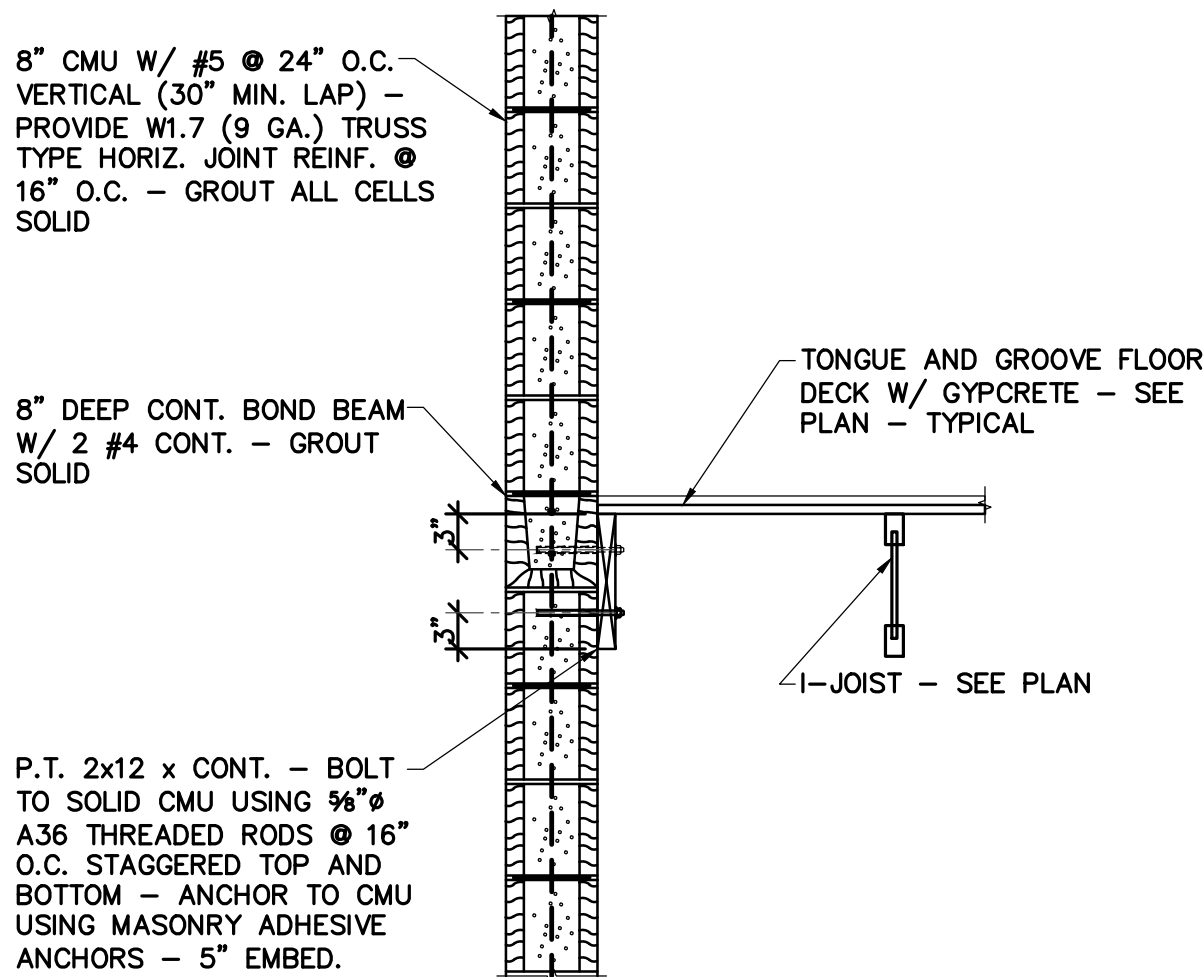
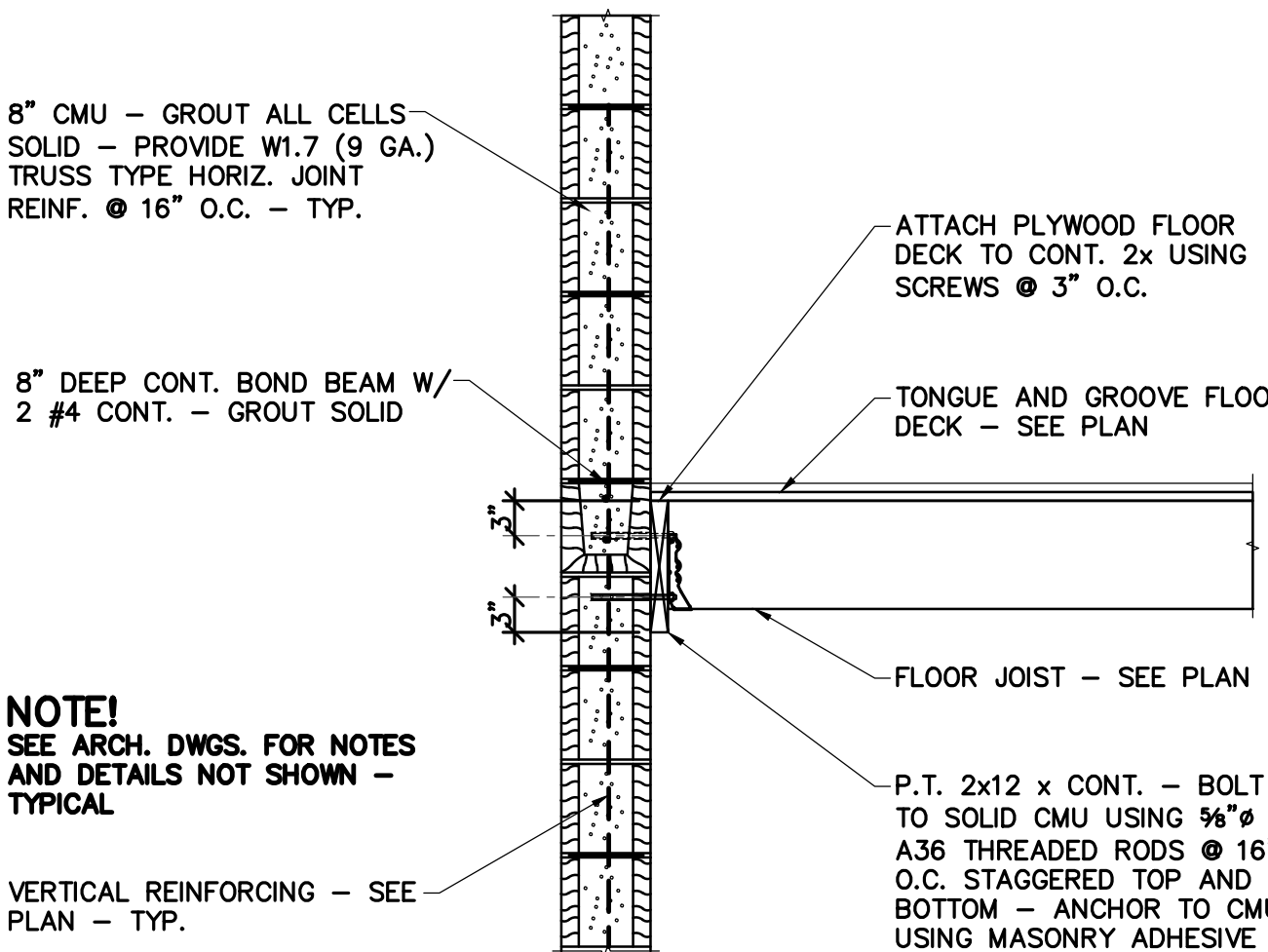


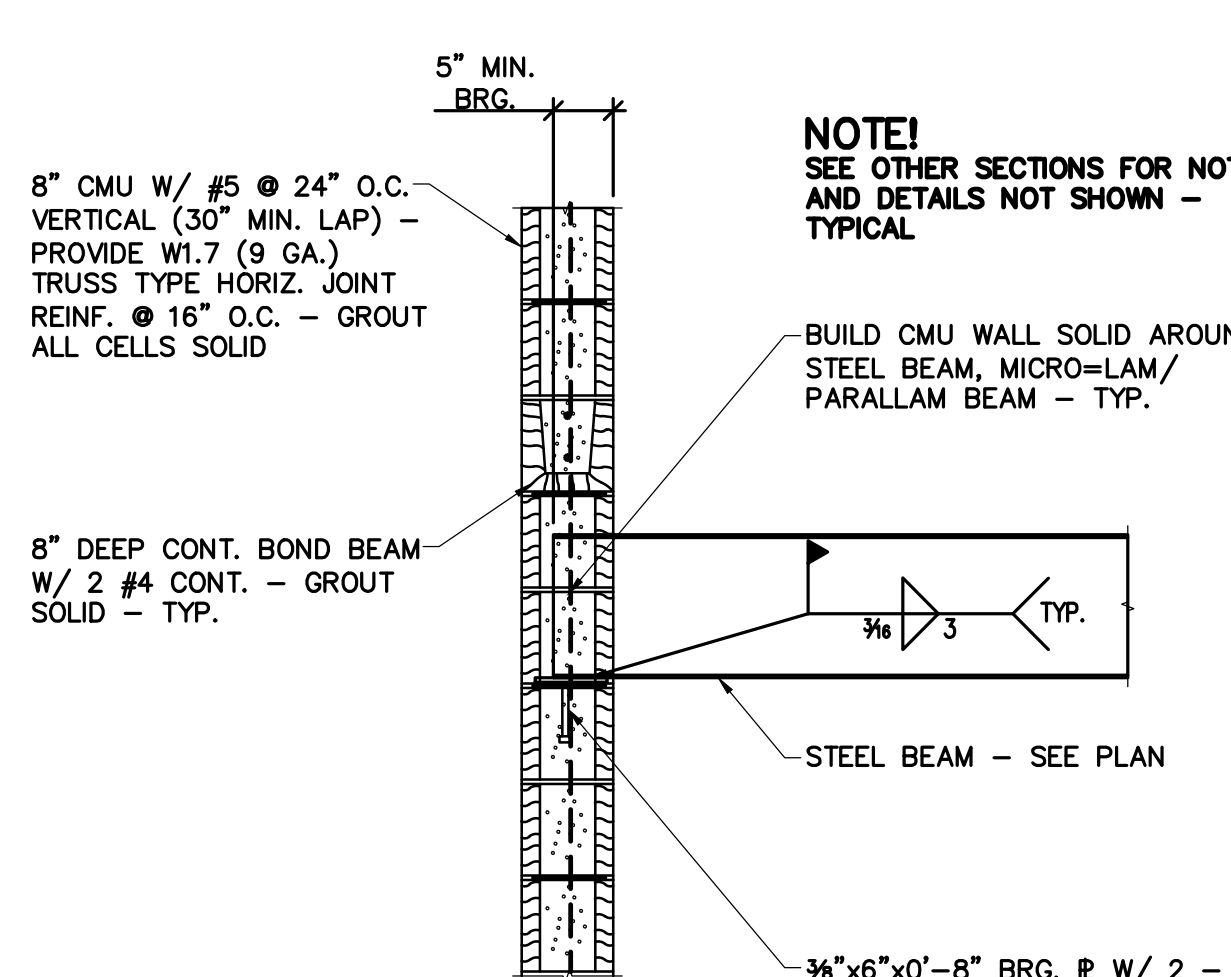
**1 SECTION AT ELEVATOR/STAIR**  
S402 3/4" = 1'-0"



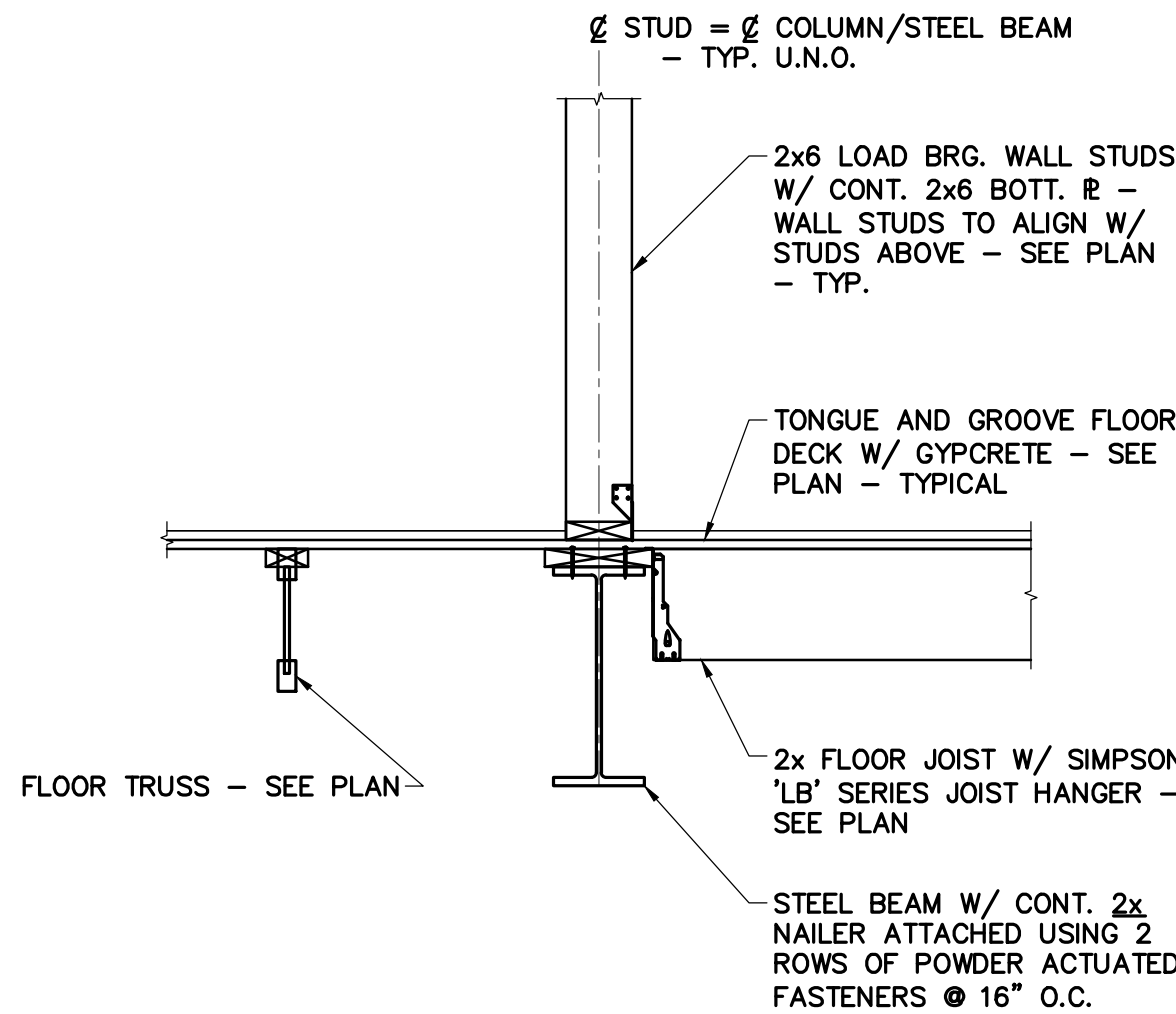
**2 SECTION AT ELEVATOR/STAIR**  
S402 3/4" = 1'-0"



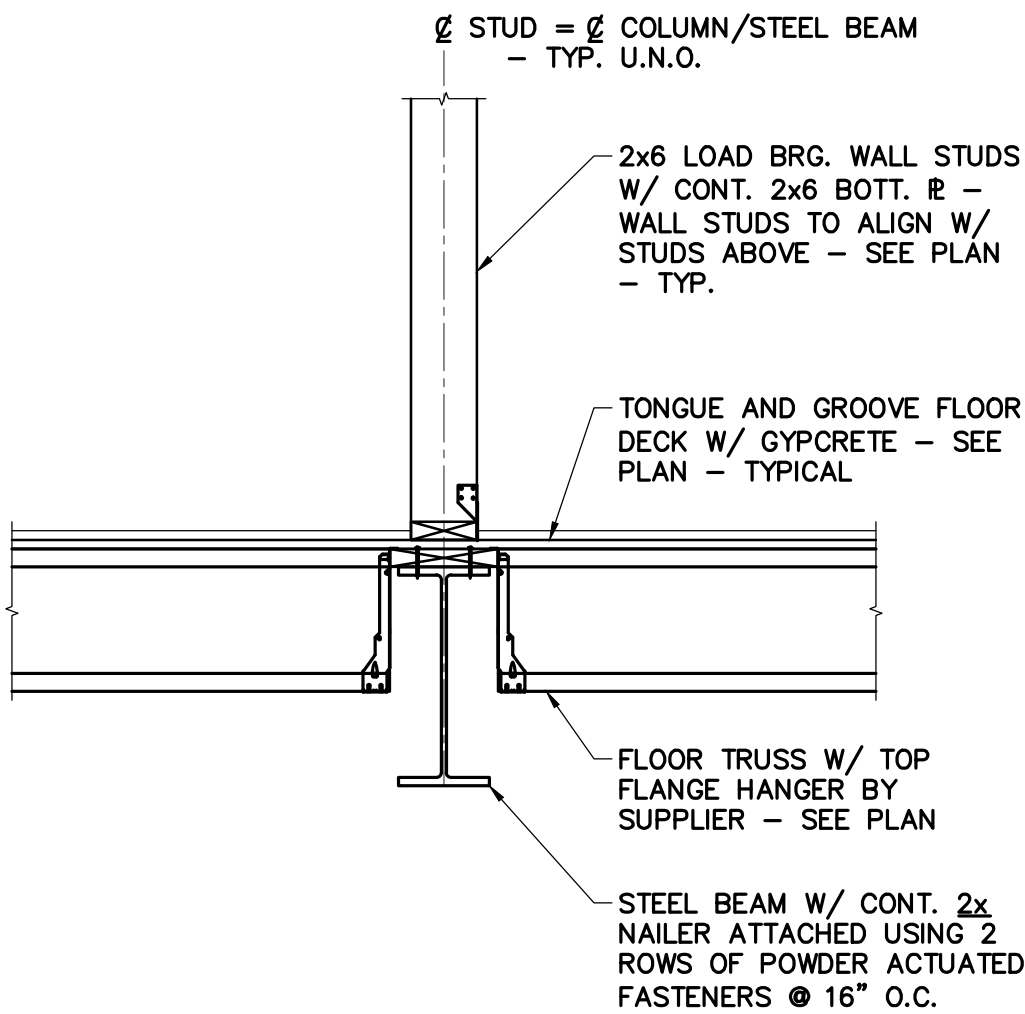
**3 SECTION AT ELEVATOR/STAIR**  
S402 3/4" = 1'-0"



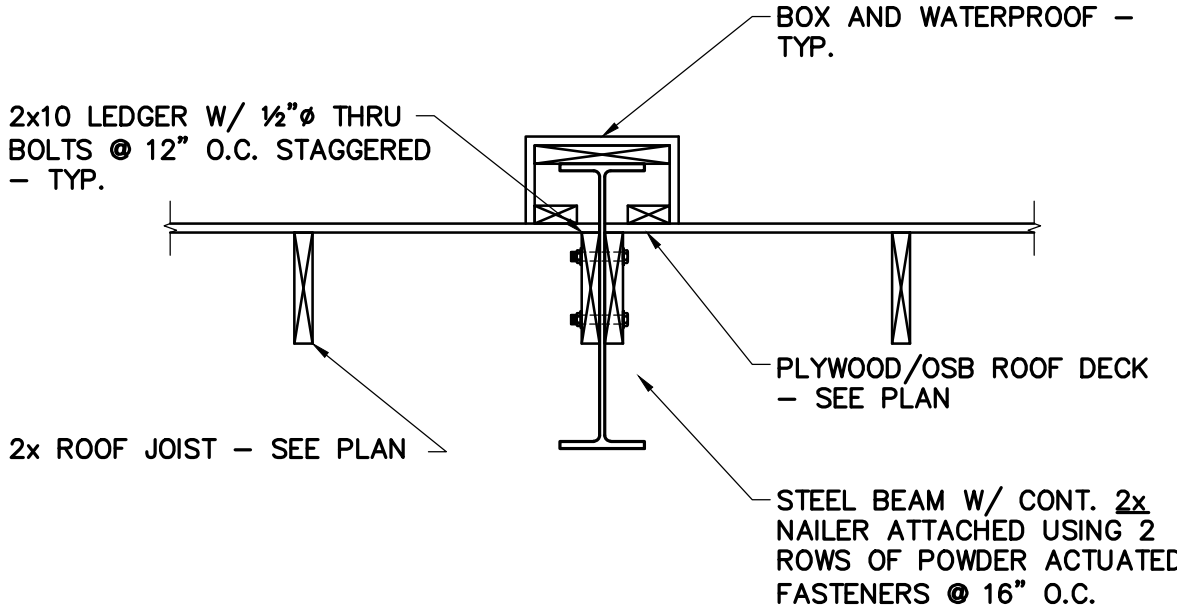
**4 STEEL BEAM AT CMU WALL**  
S402 3/4" = 1'-0"



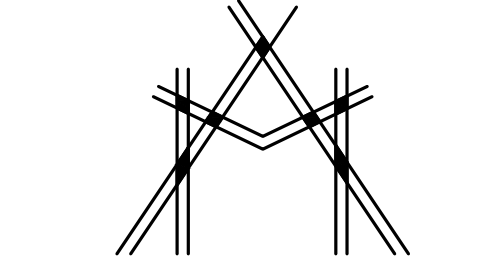
**5 SECTION AT STEEL BEAM**  
S402 3/4" = 1'-0"



**6 SECTION AT STEEL BEAM**  
S402 3/4" = 1'-0"



**7 SECTION AT STEEL BEAM**  
S402 3/4" = 1'-0"



**MISHRA**  
ARCHITECTURE PLLC

6800 S Creek Rd., Charlotte, NC 28277  
Ph: (704) 625-6554 Fax: (704) 919-5822  
EMAIL: ashish@mishraarch.com  
WEB: www.mishraarch.com

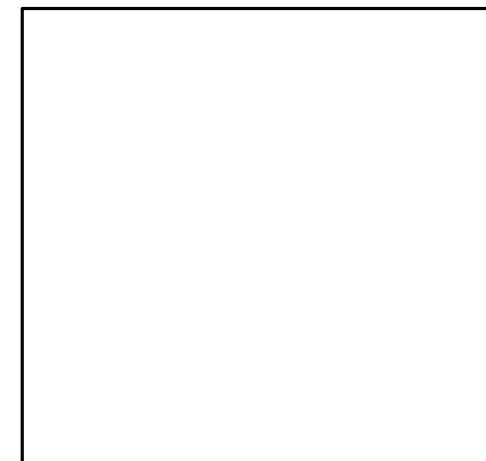
**CIVIL:**  
Benchmark Engineering and Surveying  
101 Highpointe Court, Suite B  
Brandon, MS 39042  
Phone: (601) 591-1077  
Fax: (601) 591-0177  
Email: mikes@bellsouth.net

**STRUCTURAL:**  
WGPM, Inc.  
11220 Elm Lane, Suite 201  
Charlotte, NC 28277  
Phone: (704) 542-7199  
Fax: (704) 542-7195  
Email: lwright@wgpmc.com

**MEP:**  
Allied Consulting Engineers  
2905-D Queen City Drive  
Charlotte, NC 28208  
Phone: (704) 399-3943  
Email: asoler@allied-engineers.com

REVISIONS		
No.	Date	Description

Information contained on this drawing and in all digital files associated is authorized for use on the project named herein only and is the property of MISHRA ARCHITECTURE PLLC and may not be reproduced in any manner without express written or verbal permission from authorized individuals. Original drawing is 24"x36" and scales are as indicated. © 2013 MISHRA ARCHITECTURE PLLC



KEY PLAN

Shiva Southaven Inc.

Holiday Inn Express & Suites

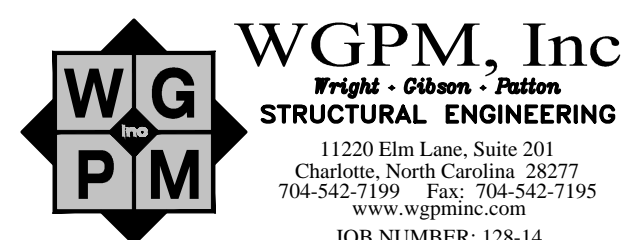
Lot 16 (Rev Lot 3) Southcrest Pkwy.  
Southcrest Subdivision  
Southaven, MS 38671

Drawing Title  
Floor Framing Sections and Details

Phase  
Construction Documents

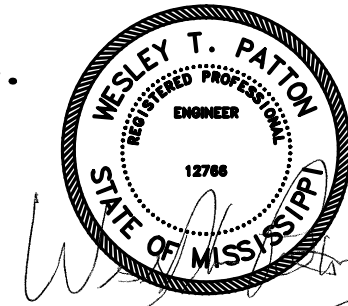
Project No.	14-081	Sheet No.	S402
Prepared by	AEB		
Checked by	HLW		
Date	Feb. 27, 2015		

Review



**WGPM, Inc.**  
Fright - Olsen - Patton  
STRUCTURAL ENGINEERING

11220 Elm Lane, Suite 201  
Charlotte, North Carolina 28277  
704-542-7199 Fax: 704-542-7195  
www.wgpmc.com  
JOB NUMBER: 128-14



02-27-15

Holiday Inn Express & Suites