

MISHRA ARCHITECTURE PLLC

6800 S Creek Rd., Charlotte, NC 28277
Ph: (704) 625-6554 Fax: (704) 919-5822
EMAIL:ashish@mishraarch.com
WEB: www.mishraarch.com

CIVIL
Benchmark Engineering and Surveying
101 Highpointe Court, Suite B
Brandon, MS 39042
Phone: (601) 591-1077
Fax: (601) 591-0177
Email:mkikes@bellsouth.net

STRUCTURAL:
WGPM, Inc.
11220 Elm Lane, Suite 201
Charlotte, NC 28277
Phone: (704) 542-7199
Fax: (704) 542-7195
Email: lwright@wgpmcinc.com

MEP:
Allied Consulting Engineers
2905-D Queen City Drive
Charlotte, NC 28208
Phone: (704) 399-3943
Email: asoler@allied-engineers.com

REVISIONS		
No.	Date	Description

Information contained on this drawing and in all digital files associated is authorized for use on the project named herein only and is the property of MISHRA ARCHITECTURE PLLC and may not be reproduced in any manner without express written or verbal permission from authorized individuals. Original drawing is 24"x36" and scales are as indicated. © 2013 MISHRA ARCHITECTURE PLLC

KEY PLAN

Shiva Southaven Inc.

Holiday Inn Express & Suites

Lot 16 (Rev Lot 3) Southcrest Pkwy.
Southwest Subdivision
Southaven, MS 38671

Drawing Title
Simpson ATS Details

Phase
Construction Documents

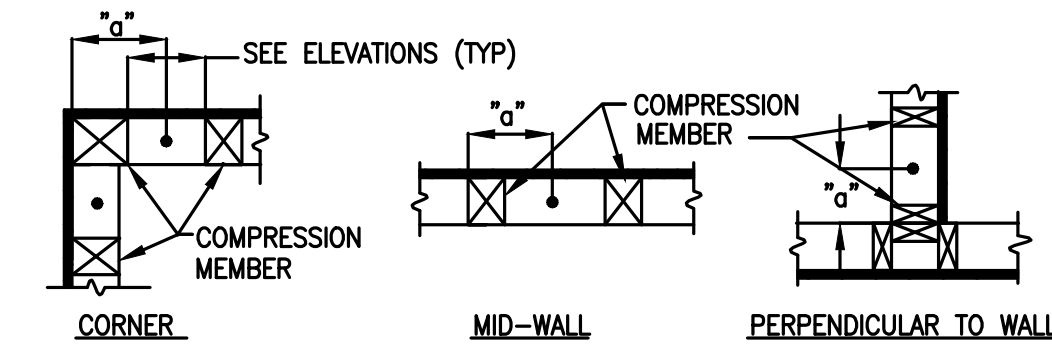
Project No.	14-081	Sheet No.	
Prepared by	AEB		
Checked by	HLW		S601
Date	Feb. 27, 2015		

Review

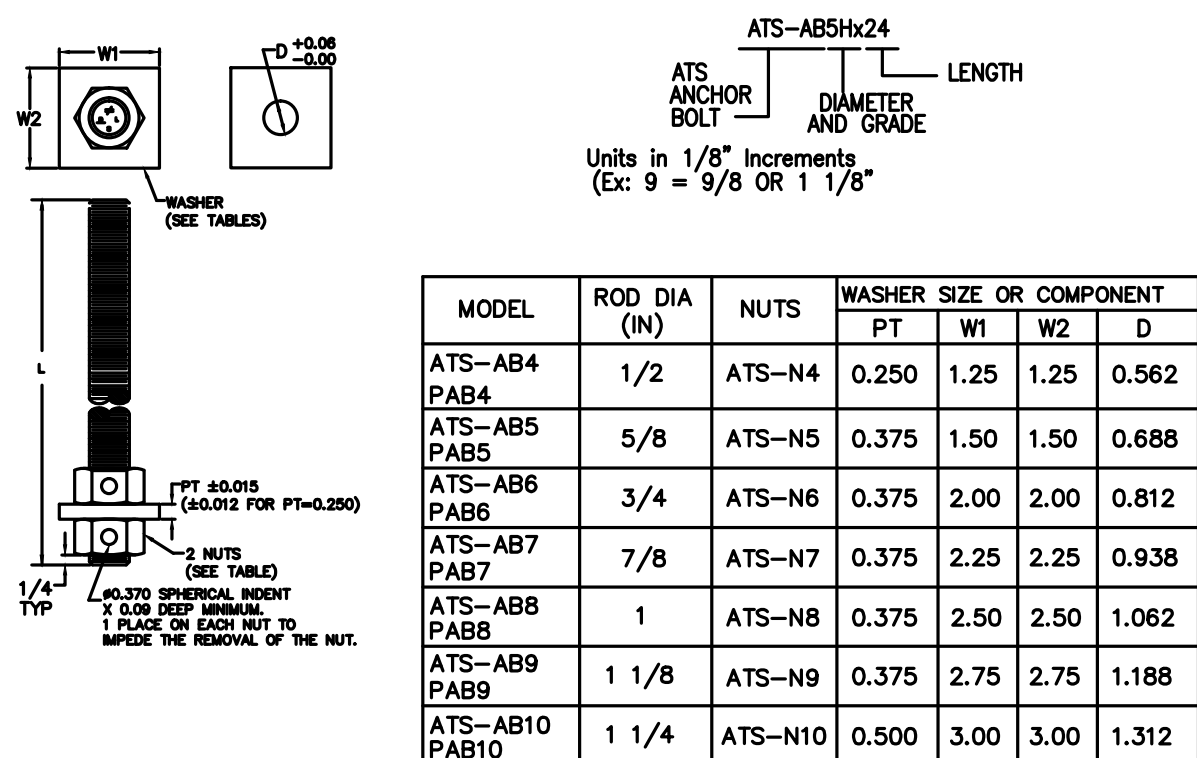
Holiday Inn Express & Suites

ANCHOR BOLT LAYOUT		
POST SIZE	"a" W/ 6" SPACING BETWEEN STUDS	"a" W/ 9" SPACING BETWEEN STUDS
2x4 or 2x6	4 1/2"	6"
3x4 or 3x6	5 1/2"	7"
2-2x4 or 2-2x6	6"	7 1/2"
2-3x4 or 2-3x6	8"	9 1/2"
4x6 or 6x6	8 1/2"	10"
4x8	10 1/4"	11 3/4"
6x8	10 1/2"	12"
4x10	12 1/4"	13 3/4"
6x10	12 1/2"	14"

1. COMPRESSION MEMBERS DO NOT INCLUDE TRIMMERS.
2. LOCATE ANCHOR BOLT W/ NARROWEST COMPRESSION MEMBER.
3. WHEN SHEARWALLS MEET IN A CORNER AND SHARE A COMMON CORNER POST, THE POST SHALL BE THE LARGER OF THAT SPECIFIED FOR EACH INDIVIDUAL SHEARWALL.

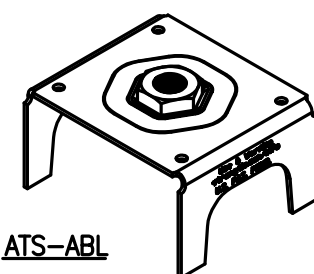


15 ANCHOR BOLT LAYOUT



1. ATS ANCHOR BOLTS AVAILABLE IN 5/8" THRU 1 1/4" DIA IN STANDARD AND HIGH STRENGTH.
2. ANCHOR BOLT SIZE AND LENGTH BY DESIGNER.
3. LENGTHS AVAILABLE IN 18", 24", 30", AND 36".

16 ANCHOR BOLTS



ATS-ABL NOTES AND INSTALLATION

1. MODELS SHOWN PROVIDE 1" STANDOFF.
2. MODELS WITH OST NUTS AVAILABLE FOR USE WITH HDG. RODS.
3. ATTACH ABL TO FRAMEWORK WITH (2) MIN NAILS OR SCREWS.
4. ATTACH THE UPPER NUT AND PLATE WASHER TO THREADED ROD.
5. THREAD THE ROD INTO THE ABL UNTIL IT BOTTOMS OUT ON THE PLATE WASHER AND IS FULLY ENGAGED WITH BOTTOM NUT.

17 ANCHOR BOLT LOCATOR

MODEL	ATS PLATE DIMENSIONS				COMPATIBLE TAKE-UP DEVICE SERIES
	W (IN)	L (IN)	I (IN)	D hole (IN)	
PLS-3X3.5	3	3 1/2	3/8	1 1/8	RTUD
PLS-3X5.5	3	5 1/2	3/8	1 1/8	
PLS-3X6.5	3	6 1/2	3/8	1 1/8	
PLS-3X8.5	3	8 1/2	3/8	1 1/8	
PLS-3X10.5	3	10 1/2	3/8	1 1/8	
PLS-3X12	3	12	1/2	1 1/8	
PLS-3X14	3	14	1/2	1 1/8	
PLS-3X16	3	16	1/2	1 1/8	
PLS-3X18	3	18	1/2	1 1/8	
PLS-3X20	3	20	1/2	1 1/8	
PLS-3X22	3	22	1/2	1 1/8	
PLS-3X24	3	24	1/2	1 1/8	
PLS-3X26	3	26	1/2	1 1/8	RTUD
PLS-3X28	3	28	1/2	1 1/8	
PLS-3X30	3	30	1/2	1 1/8	
PLS-3X32	3	32	1/2	1 1/8	
PLS-3X34	3	34	1/2	1 1/8	
PLS-3X36	3	36	1/2	1 1/8	
PLS-3X38	3	38	1/2	1 1/8	
PLS-3X40	3	40	1/2	1 1/8	
PLS-3X42	3	42	1/2	1 1/8	
PLS-3X44	3	44	1/2	1 1/8	
PLS-3X46	3	46	1/2	1 1/8	
PLS-3X48	3	48	1/2	1 1/8	
PLS-3X50	3	50	1/2	1 1/8	
PLS-3X52	3	52	1/2	1 1/8	
PLS-3X54	3	54	1/2	1 1/8	
PLS-3X56	3	56	1/2	1 1/8	
PLS-3X58	3	58	1/2	1 1/8	
PLS-3X60	3	60	1/2	1 1/8	
PLS-3X62	3	62	1/2	1 1/8	
PLS-3X64	3	64	1/2	1 1/8	
PLS-3X66	3	66	1/2	1 1/8	
PLS-3X68	3	68	1/2	1 1/8	
PLS-3X70	3	70	1/2	1 1/8	
PLS-3X72	3	72	1/2	1 1/8	
PLS-3X74	3	74	1/2	1 1/8	
PLS-3X76	3	76	1/2	1 1/8	
PLS-3X78	3	78	1/2	1 1/8	
PLS-3X80	3	80	1/2	1 1/8	
PLS-3X82	3	82	1/2	1 1/8	
PLS-3X84	3	84	1/2	1 1/8	
PLS-3X86	3	86	1/2	1 1/8	
PLS-3X88	3	88	1/2	1 1/8	
PLS-3X90	3	90	1/2	1 1/8	
PLS-3X92	3	92	1/2	1 1/8	
PLS-3X94	3	94	1/2	1 1/8	
PLS-3X96	3	96	1/2	1 1/8	
PLS-3X98	3	98	1/2	1 1/8	
PLS-3X100	3	100	1/2	1 1/8	
PLS-3X102	3	102	1/2	1 1/8	
PLS-3X104	3	104	1/2	1 1/8	
PLS-3X106	3	106	1/2	1 1/8	
PLS-3X108	3	108	1/2	1 1/8	
PLS-3X110	3	110	1/2	1 1/8	
PLS-3X112	3	112	1/2	1 1/8	
PLS-3X114	3	114	1/2	1 1/8	
PLS-3X116	3	116	1/2	1 1/8	
PLS-3X118	3	118	1/2	1 1/8	
PLS-3X120	3	120	1/2	1 1/8	
PLS-3X122	3	122	1/2	1 1/8	
PLS-3X124	3	124	1/2	1 1/8	
PLS-3X126	3	126	1/2	1 1/8	
PLS-3X128	3	128	1/2	1 1/8	
PLS-3X130	3	130	1/2	1 1/8	
PLS-3X132	3	132	1/2	1 1/8	
PLS-3X134	3	134	1/2	1 1/8	
PLS-3X136	3	136	1/2	1 1/8	
PLS-3X138	3	138	1/2	1 1/8	
PLS-3X140	3	140	1/2	1 1/8	
PLS-3X142	3	142	1/2	1 1/8	
PLS-3X144	3	144	1/2	1 1/8	
PLS-3X146	3	146	1/2	1 1/8	
PLS-3X148	3	148	1/2	1 1/8	
PLS-3X150	3	150	1/2	1 1/8	
PLS-3X152	3	152	1/2	1 1/8	
PLS-3X154	3	154	1/2	1 1/8	
PLS-3X156	3	156	1/2	1 1/8	
PLS-3X158	3	158	1/2	1 1/8	
PLS-3X160	3	160	1/2	1 1/8	
PLS-3X162	3	162	1/2	1 1/8	
PLS-3X164	3	164	1/2	1 1/8	
PLS-3X166	3	166	1/2	1 1/8	
PLS-3X168	3	168	1/2	1 1/8	
PLS-3X170	3	170	1/2	1 1/8	
PLS-3X172	3	172	1/2	1 1/8	
PLS-3X174	3	174	1/2	1 1/8	
PLS-3X176	3	176	1/2	1 1/8	
PLS-3X178	3	178	1/2	1 1/8	
PLS-3X180	3	180	1/2	1 1/8	
PLS-3X182	3	182	1/2	1 1/8	
PLS-3X184	3	184	1/2	1 1/8	
PLS-3X186	3	186	1/2	1 1/8	
PLS-3X188	3	188	1/2	1 1/8	
PLS-3X190	3	190	1/2	1 1/8	
PLS-3X192	3	192	1/2	1 1/8	
PLS-3X194	3	194	1/2	1 1/8	
PLS-3X196	3	196	1/2	1 1/8	
PLS-3X198	3	198	1/2	1 1/8	
PLS-3X200	3	200	1/2	1 1/8	
PLS-3X202	3	202	1/2	1 1/8	
PLS-3X204	3	204	1/2	1 1/8	
PLS-3X206	3	206	1/2	1 1/8	
PLS-3X208	3	208	1/2	1 1/8	
PLS-3X210	3	210	1/2	1 1/8	
PLS-3X212	3	212	1/2	1 1/8	
PLS-3X214	3	214	1/2	1 1/8	
PLS-3X216	3	216	1/2	1 1/8	
PLS-3X218	3	218	1/2	1 1/8	
PLS-3X220	3	220	1/2	1 1/8	
PLS-3X222	3	222	1/2	1 1/8	
PLS-3X224	3	224	1/2	1 1/8	
PLS-3X226	3	226	1/2	1 1/8	
PLS-3X228	3	228	1/2	1 1/8	
PLS-3X230	3	230	1/2	1 1/8	
PLS-3X232	3	232	1/2	1 1/8	
PLS-3X234	3	234	1/2	1 1/8	
PLS-3X236	3	236	1/2	1 1/8	
PLS-3X238	3	238	1/2	1 1/8	
PLS-3X240	3	240	1/2	1 1/8	
PLS-3X242	3	242	1/2	1 1/8	
PLS-3X244	3	244	1/2	1 1/8	
PLS-3X246	3	246	1/2	1 1/8	
PLS-3X248	3	248	1/2	1 1/8	
PLS-3X250	3	250	1/2	1 1/8	
PLS-3X252	3	252	1/2	1 1/8	
PLS-3X254	3	254	1/2	1 1/8	
PLS-3X256	3	256	1/2	1 1/8	
PLS-3X258	3	258	1/2	1 1/8	
PLS-3X260	3	260	1/2	1 1/8	
PLS-3X262	3	262	1/2	1 1/8	
PLS-3X264	3	264	1/2	1 1/8	
PLS-3X266	3	266	1/2	1 1/8	
PLS-3X268	3	268	1/2	1 1/8	
PLS-3X270	3	270	1/2	1 1/8	
PLS-3X272	3	272	1/2	1 1/8	
PLS-3X274	3	274	1/2	1 1/8	
PLS-3X276	3	276	1/2	1 1/8	
PLS-3X278	3	278	1/2	1 1/8	
PLS-3X280	3	280	1/2	1 1/8	
PLS-3X282	3	282	1/2	1 1/8	
PLS-3X284	3	284	1/2	1 1/8	
PLS-3X286	3	286	1/2	1 1/8	
PLS-3X288	3	288	1/2	1 1/8	
PLS-3X290	3	290	1/2	1 1/8	
PLS-3X292	3	292	1/2	1 1/8	
PLS-3X294	3	294	1/2	1 1/8	
PLS-3X296	3	296	1/2	1 1/8	
PLS-3X298	3	298	1/2	1 1/8	
PLS-3X300	3	300	1/2	1 1/8	
PLS-3X302	3	302	1/2	1 1/8	
PLS-3X304	3	304	1/2	1 1/8	
PLS-3X306	3	306	1/2	1 1/8	
PLS-3X308	3	308	1/2	1 1/8	
PLS-3X310	3	310	1/2	1 1/8	
PLS-3X312	3	312	1/2	1 1/8	
PLS-3X314	3	314	1/2	1 1/8	
PLS-3X316	3	316	1/2	1 1/8	
PLS-3X318	3	318	1/2	1 1/8	
PLS-3X320	3	320	1/2	1 1/8	
PLS-3X322	3	322	1/2	1 1/8	
PLS-3X324	3	324	1/2	1 1/8	
PLS-3X326	3	326	1/2	1 1/8	
PLS-3X328	3	328	1/2	1 1/8	
PLS-3X330	3	330	1/2	1 1/8	
PLS-3X332	3	332	1/2	1 1/8	
PLS-3X334	3	334	1/2	1 1/8	
PLS-3X336	3	336	1/2	1 1/8	
PLS-3X338	3	338	1/2	1 1/8	
PLS-3X340	3	340	1/2	1 1/8	
PLS-3X342	3	342	1/2	1 1/8	
PLS-3X344	3	344	1/2	1 1/8	
PLS-3X346	3	346	1/2	1 1/8	
PLS-3X348	3	348	1/2	1 1/8	
PLS-3X350	3	350	1/2	1 1/8	
PLS-3X352	3	352	1/2	1 1/8	
PLS-3X354	3	354	1/2	1 1/8	
PLS-3X356	3	356	1/2	1 1/8	
PLS-3X358	3	358	1/2	1 1/8	
PLS-3X360	3	360	1/2	1 1/8	
PLS-3X362	3	362	1/2	1 1/8	
PLS-3X364	3	364	1/2	1 1/8	
PLS-3X366	3	366	1/2	1 1/8	
PLS-3X368	3	368	1/2	1 1/8	
PLS-3X370	3	370	1/2	1 1/8	
PLS-3X372	3	372	1/2	1 1/8	
PLS-3X374	3	374	1/2	1 1/8	
PLS-3X376	3	376	1/2	1 1/8	
PLS-3X378	3	378	1/2	1 1/8	
PLS-3X380	3	380	1/2	1 1/8	
PLS-3X382	3	382	1/2	1 1/8	
PLS-3X384	3	384	1/2	1 1/8	
PLS-3X386	3	386	1/2	1 1/8	
PLS-3X388	3	388	1/2	1 1/8	
PLS-3X390	3	390	1/2	1 1/8	
PLS-3X392	3	392	1/2	1 1/8	
PLS-3X394	3	394	1/2	1 1/8	
PLS-3X396	3	396	1/2	1 1/8	
PLS-3X398	3	398	1/2	1 1/8	
PLS-3X400	3	400	1/2	1 1/8	
PLS-3X402	3	402	1/2	1 1/8	
PLS-3X404	3	404	1/2	1 1/8	
PLS-3X406	3	406	1/2	1 1/8	
PLS-3X408	3	408	1/2	1 1/8	
PLS-3X410	3	410	1/2	1 1/8	
PLS-3X412	3	412	1/2	1 1/8	
PLS-3X414	3	414	1/2	1 1/8	
PLS-3X416	3	416	1/2	1 1/8	
PLS-3X418	3	418	1/2	1 1/8	
PLS-3X420	3	420	1/2	1 1/8	
PLS-3X422	3	422	1/2	1 1/8	
PLS-3X424	3	424	1/2	1 1/8	
PLS-3X426	3	426	1/2	1 1/8	
PLS-3X428	3	428	1/2	1 1/8	
PLS-3X430	3	430	1/2	1 1/8	
PLS-3X432	3	432	1/2	1 1/8	
PLS-3X434	3	434	1/2	1 1/8	
PLS-3X436	3	436	1/2	1 1/8	
PLS-3X438	3	438	1/2	1 1/8	
PLS-3X440	3	440	1/2	1 1/8	
PLS-3X442	3	442	1/2	1 1/8	
PLS-3X444	3	444	1/2	1 1/8	
PLS-3X446	3	446	1/2	1 1/8	
PLS-3X448	3	448	1/2	1 1/8	
PLS-3X450	3	450	1/2	1 1/8	
PLS-3X452	3	452	1/2	1 1/8	
PLS-3X454	3	454	1/2	1 1/8	
PLS-3X456	3	456	1/2	1 1/8	
PLS-3X458	3	458	1/2	1 1/8	
PLS-3X460	3	460	1/2	1 1/8	
PLS-3X462	3	462	1/2	1 1/8	
PLS-3X464	3	464	1/2	1 1/8	
PLS-3X466	3	466	1/2	1 1/8	
PLS-3X468	3	468	1/2	1 1/8	
PLS-3X470	3	470	1/2	1 1/8	
PLS-3X472	3	472	1/2	1 1/8	
PLS-3X474	3	474	1/2	1 1/8	
PLS-3X476	3	476	1/2	1 1/8	
PLS-3X478	3	478	1/2	1 1/8	
PLS-3X480	3	480	1/2	1 1/8	
PLS-3X482	3	482	1/2	1 1/8	
PLS-3X484	3	484	1/2	1 1/8	
PLS-3X486	3	486	1/2	1 1/8	
PLS-3X488	3	488	1/2	1 1/8	
PLS-3X490	3	490	1/2	1 1/8	
PLS-3X492	3	492	1/2	1 1/8	
PLS-3X494	3	494	1/2	1 1/8	
PLS-3X496	3	496	1/2	1 1/8	
PLS-3X498	3	498	1/2	1 1/8	
PLS-3X500	3	500	1/2	1 1/8	
PLS-3X502	3	502	1/2	1 1/8	
PLS-3X504	3	504	1/2	1 1/8	
PLS-3X506					