

DIAMOND TRAC

GENERAL: THE FOLLOWING SCOPE OF WORK IS TO BE PROVIDED BY GENERAL CONTRACTOR, OWNER OR OWNER'S AGENT IN ACCORDANCE WITH LOCAL GOVERNING CODE REQUIREMENTS. THE FINAL INSTALLATION SEQUENCE AND SCHEDULE WILL BE MUTUALLY AGREEABLE BETWEEN MITSUBISHI AND OTHERS.

1. PROVIDE ILLUMINATION LEVEL OF 10 FOOT CANDLES, MEASURED AT THE PIT FLOOR.
2. LIGHTS SHALL BE PROPERLY GUARDED AS REQUIRED BY LOCAL GOVERNING CODE.
3. FOR WALK-IN PIT, LOCATE LIGHT SWITCH WITHIN 18" OF LOCK LAMB SIDE OF THE ACCESS DOOR.
4. FOR PITS ASSIGNED ONLY BY A PIT LADDER, LOCATE LIGHT SWITCH ON THE HOISTWAY WALL, ADJACENT TO PIT LADDER.

- PI. ONE PER ELEVATOR, LOCATED NEAR THE PI LANDING, APPROXIMATELY 36" ABOVE THE PI FLOOR.
C. COORDINATE LOCATION OF ALL TIERS ABOVE WITH MITSUBISHI.
7. ILLUMINATION AT LANDING SISTS. THE BUILDING CORRIDORS SHALL BE SO LIGHTED THAT THE ILLUMINATION AT THE LANDING SISTS, WHEN AN ELEVATOR IS IN SERVICE, SHALL BE NOT LESS THAN 100 LX (10 FC).
8. HOSTWAY LIGHTING WHEN REQUIRED. E.G. FREE ACCESS SERVICE ELEVATOR SHALL BE PROVIDED BY OTHERS.
9. PROVIDE FLUORESCENT HOSTWAY LIGHT. LIGHT SWITCH AND GFCI DUPLEX OUTLET IN THE TOP OF HOSTWAY. COORDINATE LOCATION OF ALL TIERS ABOVE WITH MITSUBISHI.
THE ILLUMINATION PROVIDED (MINIMUM FOOT CANDLE)
THE ILLUMINATION SHALL

1. THREE (3) PHASE POWER TO OPERATE THE ELEVATOR PLATFORM DURING INSTALLATION SHALL HAVE IDENTICAL CHARACTERISTICS TO PERMANENT POWER, EXCEPT THAT THE CURRENT CAPACITY (AMPERES) MAY BE REDUCED TO 50 PERCENT OF THE PERMANENT POWER. PERMANENT POWERS SHOWN IN SECTION 2.08 BELOW.
2. THREE (3) PHASE POWER TO ADJUST THE EQUIPMENT OR FOR TEMPORARY USE BY OTHER SUB-PROCES SHALL HAVE IDENTICAL CHARACTERISTICS TO THE PERMANENT POWER.
- 2.08 POWER FEEDER DATA

- BUILDING ELECTRICAL ENGINEER SHALL SIZE FEEDERS AND FUSED DISCONNECTS PER AS SHOWN ON LATD01 DRAWING. LINE VOLTAGE DROP TO BE LESS THAN 3% DURING ACCELERATION.

1. IF STANDBY (EMERGENCY) POWER OPERATION IS REQUIRED, THE EMERGENCY GENERATOR SHALL HAVE THE SAME VOLTAGE AND CHARACTERISTICS AS THE NORMAL POWER SUPPLY. DETAIL OPERATION IS TO BE COORDINATED WITH MITSUBISHI. ALSO PROVIDE STANDBY (EMERGENCY) POWER FOR ABOVE 2.02, 2.03 & 2.05. COMPLY WITH LOCAL CODE.
2. WHEN OPERATING GENERATORS ON EMERGENCY POWER OR DURING CONSTRUCTION STAGE, A MEANS OF ABSORBING THE REGENERATIVE ENERGY SHALL BE PROVIDED, IF REGENERATIVE DEVICE IS APPLIED.

- 2.11 MELEYE OUTLET**
120 VAC, GFCI OUTLET WHERE MELEYE IS LOCATED TO BE SUPPLIED BY OTHERS.

- 3.02. STANDBY (EMERGENCY) POWER SIGNAL
1. PROVIDE WIRING AND CONDUIT TO DELIVER SIGNAL TO JUNCTION BOX AND ELEVATOR RAILWAY LOCATED AT THE CONTROL ROOM.
2. CONTACTS AND WIRING (WV, 18 AWG) SHALL BE SUFFICIENT FOR 48 VOL, 100 mA SIGNAL.
3. IF MULTI GROUP CASE, STANDBY (EMERGENCY) POWER OPERATION IS NECESSARY, PROVIDE ABOVE AUXILIARY CONTACT AT THE CONTROL ROOM FOR EACH GROUP.
4. PROVIDE AUXILIARY CONTACTS ON THE AUTOMATIC TRANSFER SWITCH THAT ARE CLOSED WHEN ON NORMAL POWER AND OPEN WHEN ON STANDBY POWER.

1. PROVIDE JUNCTION BOX LOCATED IN THE CONTROL ROOM WITH INTERCONNECTING CONDUITS ON CONTROL ROOM WALL LABEL JUNCTION BOX APPROPRIATELY;
 2. PROVIDE WIRING AND CONDUIT TO DELIVER SIGNAL TO JUNCTION BOX AND ELEVATOR RACEWAY LOCATED IN THE CONTROL ROOM
- SEPARATE SIGNALS SHALL BE PROVIDED FROM THE FIRE CONTROL SYSTEM TO INDICATE WHETHER THE ELEVATOR IS TO RECALL

- 3.04 PAGING SPEAKER AND WIRING (IF REQUIRED)**

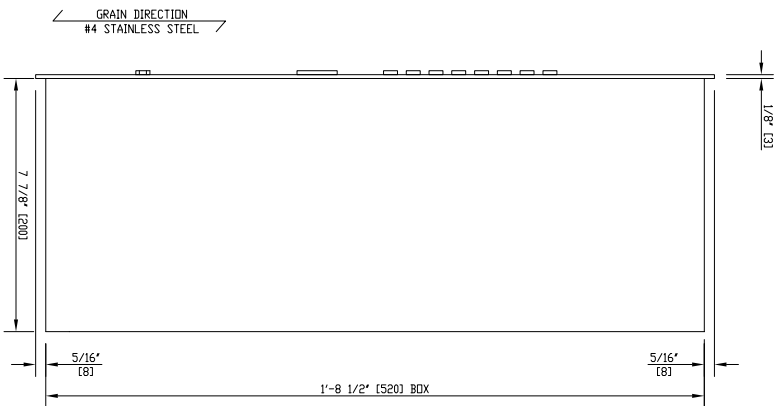
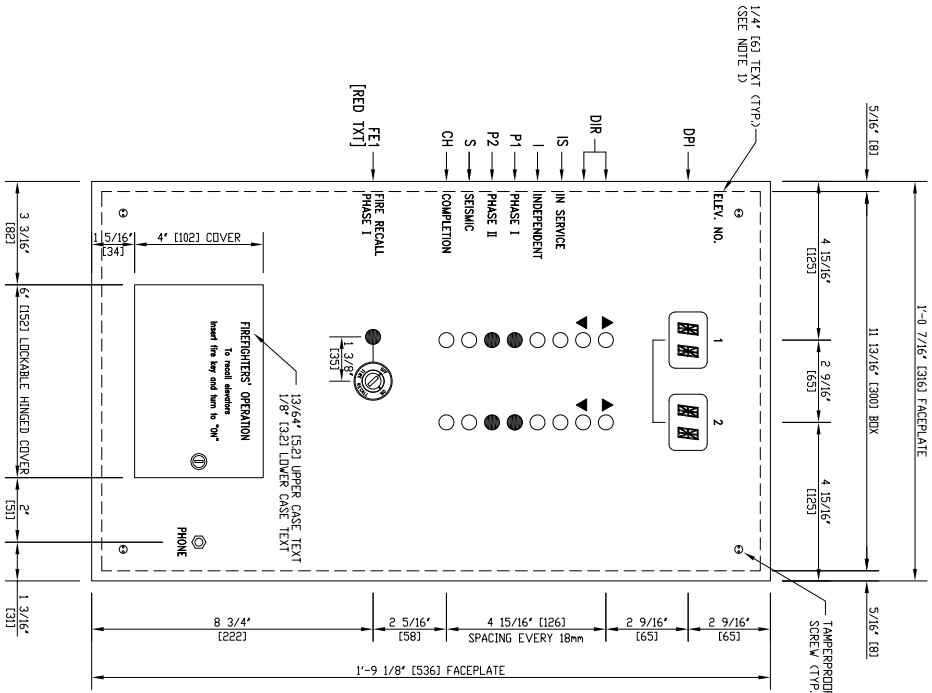
- ROOM.
3. PAGING SPEAKER, SPECIAL FIXTURES, WIRING OR GRILLS REQUIRED FOR PAGING SYSTEM ARE NOT BY MITSUBISHI.
4. MITSUBISHI WILL MOUNT THE SPEAKER ABOVE THE CEILING.

**PULL BOX
REQUIRED EVERY**

REVISIONS	<input type="checkbox"/> FOR APPROVAL <input type="checkbox"/> REVISED FOR APPROVAL <input type="checkbox"/> FINAL DISTRIBUTION <input type="checkbox"/> REVISED FINAL DISTRIBUTION
FINALIZED DRAWING	

CHEN	DATE: 07/13/17
CAO	APPROVED: J. CAO





DETAIL-B

- - LED (ORANGE WHEN LIT)
- - LED (RED WHEN LIT)
- ▲ - ETCHED ARROW (BLACK FILLED)

NO.	DATE	BY	REVISIONS
-----	------	----	-----------

A	12/04/17	PL	FINALIZED DRAWING.
---	----------	----	--------------------

FINAL DRAWING
THIS SHOP DRAWING WAS APPROVED ON 10/11/17. EQUIPMENT HAS BEEN RELEASED FOR FABRICATION. ANY CHANGES MADE AFTER APPROVAL WILL RESULT IN ADDITIONAL COST AND COMPLETION TIME.

PROJECT: **SSF HOTEL**

ADDRESS: **550 GATEWAY BLVD**

SOUTH SAN FRANCISCO, CA

CONTRACTOR: **SOUTHERN HOSPITALITY SERVICES**

ARCHITECT: **ARRIS STUDIO ARCHITECTS**

CONSULTANT: **-**

DRAWN: **W. CHEN**

CHECKED: **J. CAO**

ELEV. NO.: **1-2**

DWG. TITLE: **FIRE PANEL**

CONTRACT NO.: **ACAN-12352**

DWG. NO.: **R00D002**

KEY SWITCH	ITEM	DESCRIPTION
	DP1	DIGITAL POSITION INDICATOR, SEGMENT TYPE.
	DIR	DIRECTION INDICATOR LIGHT.
	IS	IN SERVICE INDICATOR LIGHT.
	I	INDEPENDENT SERVICE INDICATOR LIGHTS.
	P1	FIRE PHASE 1 INDICATOR LIGHT.
	P2	FIRE PHASE 2 INDICATOR LIGHT.
	S	SEISMIC OPERATION INDICATOR LIGHT.
	CH	COMPLETION OF HANGING LIGHT - LIGHT IS ON WHEN CAR RETURNED TO LOBBY ON FE PH1 OR EMERGENCY POWER.
	FE1	FE PHASE 1 - (2) POSITION PHASE 1 FIRE RECALL KEY SWITCH WITH INDICATOR LIGHT.

NOTES:

1. ALL TEXT TO BE 1/4" (6) TALL, HELVETICA TYPE FONT
2. DIMENSION INSIDE BRACKETS ARE IN MILLIMETERS.
3. DO NOT SCALE DRAWING.

NUMBER OF SECURED FLOORS:	ALL FLOORS EXCEPT MAIN LOBBY
LOCATION OF CARD READER:	C. O. P.
LOCATION OF CARD CONTROLLER:	SECURITY OFFICE
CARD READER CONTROLLER	
TYPE OF CARD READER:	PENDING (OTHERS TO PROVIDE)
MANUFACTURER:	PENDING (OTHERS TO PROVIDE)
CARD READER OVERRIDE SWITCH BY ELEVATOR:	<input checked="" type="checkbox"/> INSIDE C. O. P. <input type="checkbox"/> MELEYE / FIRE PANEL / LOBBY PANEL
OVERRIDE SWITCH BY CARD READER CONTROLLER (SEPARATE DRY CONTACT REQUIRED)	WITHOUT
ELECTRICAL REQUIREMENTS	
SIGNAL LOCATION:	MACHINE ROOM / CONTROL ROOM
ONE CONTACT PER CONTROLLED FLOOR PER CAR:	YES (IF N/A, SPECIFY THE GROUP OF FLOORS OPERATED BY ONE CONTACT.)
CARD READER CONTACTS RATED AT 48VDC & 100ma OR MORE, AND TO BE NORMALLY OPEN TYPE WITH THE FOLLOWING CHARACTERISTICS:	
*NORMAL OPERATION MODE: ALL BUTTONS ARE OPERATIVE BY CLOSING ALL DRY CONTACTS.	
*SECURITY OPERATION MODE: CONTROLLED BUTTONS ARE OPERATIVE FOR A FEW SECONDS AFTER CARD IS DETECTED. BY CLOSING THE APPROPRIATE CONTACTS.	
*NORMALLY OPEN TYPE: DURING NORMAL OPERATION, CONTACTS REMAIN OPEN. CONTACTS WILL REMAIN OPEN, RESTRICTING ACCESS TO ALL SECURED FLOORS.	
AN ACCESSIBLE OVERRIDE SWITCH OR SERVICE CALL IS REQUIRED TO OVERRIDE THIS FEATURE, UNLESS THE CARD READER SYSTEM IS FIRED.	
(SEE CARD READER OPERATION FLOW CHART FOR REQUIRED CONDITIONS OF CONTACTS.)	

NOTES:

1. FIRE EMERGENCY SERVICE AND INDEPENDENT OPERATION SHALL OVERRIDE CARD READER OPERATION.
2. FLOOR LOCKOUT SYSTEM AT LOBBY PANEL, IF PROVIDED, SHALL OVERRIDE CARD READER SYSTEM.
3. REGARDLESS OF MODE OF OPERATION, HALL CALLS ARE ALWAYS ALLOWED.
4. MITSUBISHI WILL PROVIDE A 5" H x 4" W x 3" D CARD READER SPACE IN THE CAR OPERATING PANEL.
5. IF MOUNTING IS REQUIRED, FASTENING WILL BE SUPPLIED BY MITSUBISHI, AS LONG AS REQUIREMENT IS RECEIVED PRIOR TO MANUFACTURING. OTHERWISE, MOUNTING WILL BE BY OTHERS.
6. 2 CONTACTS PER FLOOR WILL BE PROVIDED FOR CARS THAT HAVE AT LEAST 1 THROUGH-CAR OPENING (2026), UNLESS OTHERWISE SPECIFIED. AS A RESULT, THE FRONT AND REAR OPENINGS OF THE CAR READER SHALL BE SECURED SEPARATELY.
7. CARD READER SHALL BE SUPPLIED BY MITSUBISHI.
8. LOCATION OF CARD READER JUNCTION BOX, IN MACHINE ROOM, TO BE COORDINATED WITH MITSUBISHI.
9. A CARD READER OVERRIDE SWITCH IS PROVIDED IN THE CAR OPERATING PANEL AND IN MELEYE AS STANDARD. IF MELEYE IS NOT APPLICABLE, A CARD READER OVERRIDE SWITCH MAY BE PROVIDED ON THE FIRE PANEL OR A SEPARATE LOBBY PANEL, BY CUSTOMER REQUEST ONLY.
10. PROVIDE MITSUBISHI WITH CARD READER SPECIFICATIONS, UPON APPROVAL OF THIS DRAWING.
11. ALL OTHER WORK NOT SPECIFIED HERE IN, BY OTHERS.

NOTE:
1. DIMENSIONS INSIDE BRACKETS ARE MILLIMETERS.
2. DO NOT SCALE THIS DRAWING.

NO.	DATE	BY	REVISIONS

THIS SHOP DRAWING WAS APPROVED ON 10/12/17. EQUIPMENT HAS BEEN RELEASED FOR FABRICATION. ANY CHANGES MADE AFTER APPROVAL WILL RESULT IN ADDITIONAL COST AND COMPLETION TIME.	FINAL DRAWING	
	<input type="checkbox"/> FOR APPROVAL	<input type="checkbox"/> FOR APPROVAL
	<input type="checkbox"/> REVISED FOR APPROVAL	<input type="checkbox"/> REVISED FOR APPROVAL
	<input type="checkbox"/> FINAL DISTRIBUTION	<input type="checkbox"/> FINAL DISTRIBUTION

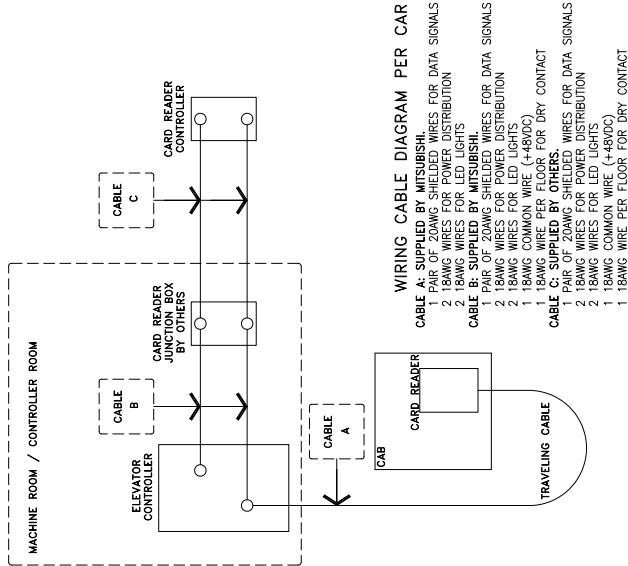
PROJECT:	SSF HOTEL
ADDRESS:	550 GATEWAY BLVD SOUTH SAN FRANCISCO, CA
CONTRACTOR:	SOUTHERN HOSPITALITY SERVICES
ARCHITECT:	ARRIS STUDIO ARCHITECTS
CONSULTANT:	-
DRAWN:	PL
CHECKED:	J. CAO
ELEV. NO.:	1-2
DWG. TITLE:	CARD READER
CONTRACT NO.:	ACAN-12352
DWG. NO.:	R00D003



ELEVATOR/ESCALATOR DIVISION

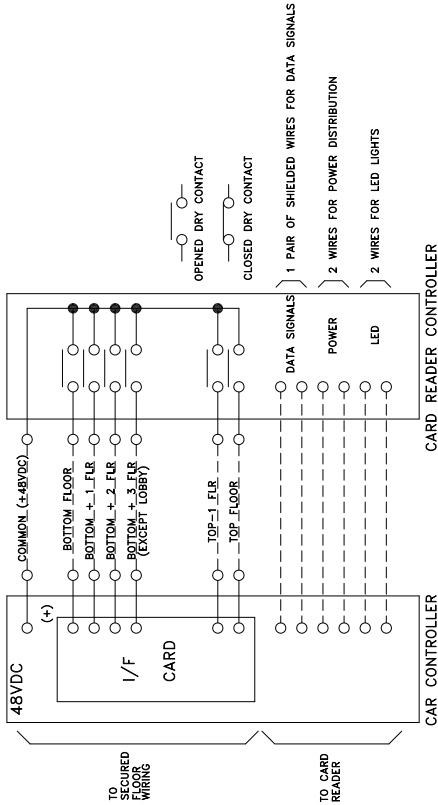
ENGINEERING NOTE:

TOTAL LENGTH OF CABLES A, B, & C SHOULD NOT EXCEED 300 FT.. IF THIS CONDITION IS NOT MET, A GREATER WIRE GAUGE WILL BE REQUIRED. (THIS NOTE TO BE DELETED PRIOR TO PRELIMINARY DRAWING SUBMITTAL.)



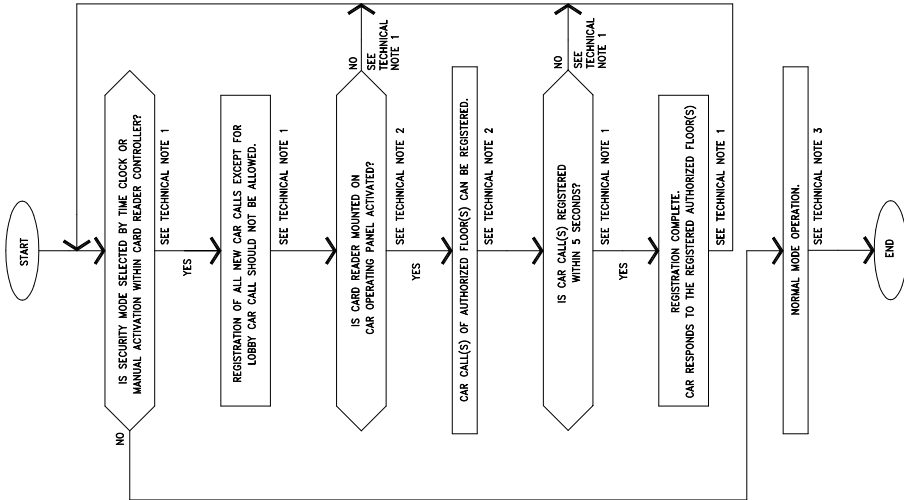
WIRING CABLE DIAGRAM PER CAR

- CABLE A: SUPPLIED BY MITSUBISHI.
1. 18AWG SHIELDED WIRES FOR DATA SIGNALS
 2. 18AWG WIRES FOR POWER DISTRIBUTION
- CABLE B: SUPPLIED BY MITSUBISHI.
1. PAIR OF 20AWG SHIELDED WIRES FOR DATA SIGNALS
 2. 18AWG WIRES FOR POWER DISTRIBUTION
 1. 18AWG COMMON WIRE (+48VDC)
 1. 18AWG WIRE PER FLOOR FOR DRY CONTACT
- CABLE C: SUPPLIED BY OTHERS.
1. PAIR OF 20AWG SHIELDED WIRES FOR DATA SIGNALS
 2. 18AWG WIRES FOR POWER DISTRIBUTION
 1. 18AWG COMMON WIRE (+48VDC)
 1. 18AWG WIRE PER FLOOR FOR DRY CONTACT



WIRING DIAGRAM FOR CARD READER

- THIS DIAGRAM SHOWS HOW TO COMBINE ELEVATOR AND CARD READER CONTROLLERS.
1. CARD READER SIGNALS ARE RECEIVED THROUGH THE ELEVATOR CONTROLLER.
 2. ARRANGE DRY CONTACTS OF AUTHORIZED FLOOR(S) PER CARD READER SIGNAL.
 3. PROVIDE DRY CONTACTS, 1 PER SECURITY FLOOR AND 1 COMMON TO ELEVATOR CONTROLLER.
 4. TO ELEVATOR CONTROL PANEL.
 5. WHEN DRY CONTACTS ARE OPEN, REGISTRATION OF ALL CAR CALLS EXCEPT LOBBY FLOOR ARE NOT ALLOWED.
 6. WHEN DRY CONTACTS ARE CLOSED, REGISTRATION OF CAR CALLS ARE ALLOWED.



CARD READER OPERATION FLOW CHART

- TECHNICAL NOTE FOR CARD READER VENDOR:
- *1: ALL DRY CONTACTS SHALL BE OPEN. PRE-REGISTERED CAR CALLS WILL BE RESPONDED TO. FUTURE CAR CALLS MUST HAVE CARD READER AUTHORIZATION.
 - *2: DRY CONTACT(S) OF AUTHORIZED FLOOR(S) SHALL REMAIN CLOSED FOR 5 SECONDS. CLOSING TIME IS ADJUSTABLE BY CARD READER CONTROLLER.
 - *3: ALL DRY CONTACTS SHALL BE CLOSED DURING NORMAL MODE OPERATION.

G.C. NOTES:

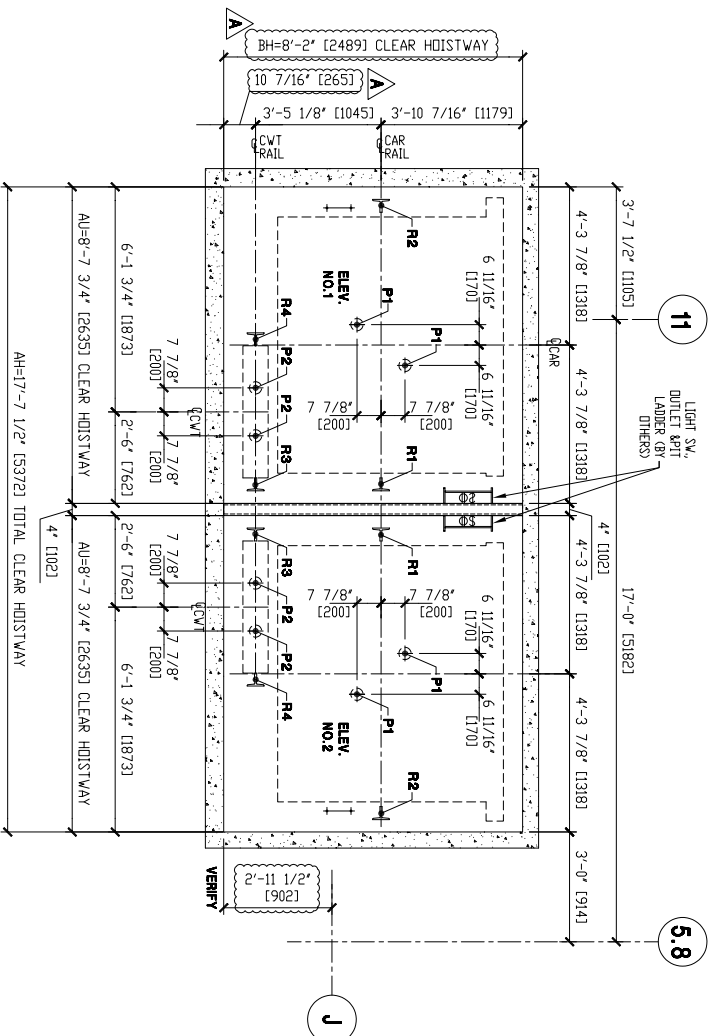
- 1) RAIL SUPPORT FOR CAR AND CWT REQUIRED AT ALL FLOORS.
- 2) ANY STRUCTURAL BEAM AND WALL SHALL NOT INTRUDE INTO THE CLEAR HOISTWAY.
- 3) MAX. BRACKET SPACING FOR CAR AND CWT FOR ELEV. NO. 1 & 2 IS 11'-9" [3581].
- 4) ALL RAIL SUPPORTS MUST BE ACCURATELY INSTALLED ACCORDING TO THE DIMENSIONS SHOWN ON THE DRAWING TO PROPER BRACKET CONNECTIONS.
- 5) PIT LADDER, LIGHT, LIGHT SW, AND GFCI OUTLET ARE BY OTHERS.

ELEVATOR DATA

ELEVATOR NO.	1 & 2
TYPE	PASSENGER
CAPACITY	3500 LBS
SPEED	200 FPM
TOTAL TRAVEL	59'-9 5/8" [18228]
CONTROL	VFRC, 2C-SM27
MACHINE	PM015
DRIVER DIAMETER	1'-4 1/8" [410]DL
ROUNDER DIAMETER (OAL/TYP)	19'-32" [100]DL, 8x4(9)
CAR SAFETY	CS-880
COMPENSATOR SAFETY	DC-270
CAR EXTERIOR SERIES	N/A
CWT GOVERNOR SERIES	N/A
GOVERNOR ROPE (OAL/TYP)	(1) 1 1/4" (9)DL, 8x4(9)
CAR RAILS-SIZE	15 LBS/FT
CWT RAILS-SIZE	15 LBS/FT
CAR BUTTER-TYPE	GBA-70A
CWT BUTTER-TYPE	GBA-70A
NO. & STROKE	(2) 2 3/4" [70] STROKE
CWT BUTTER-TYPE	GBA-70A
NO. & STROKE	(2) 2 3/4" [70] STROKE

ESTIMATED WEIGHTS

LOADING DOOR PANEL	158 LBS
CAR DOOR PANEL (1)	168 LBS
CAR DOOR PANEL (2)	360 LBS
CAR FLOOR (BY OTHERS) (3)	300 LBS
CAR FLYWHEEL(COP. LATEXES) (5)	66 LBS
ENCLOSURE WEIGHT	
CAR WEIGHT = 11000(2040)	2222 LBS
TOTAL CAR DEAD WEIGHT	15640 LBS
OVERBALLANCE ± 50 %	1750 LBS
TOTAL COUNTERWEIGHT	17743 LBS
LOAD ON CAR. SAFETY	180
LOAD ON CMT. SAFETY	N/A
STEERING SHUNT LOAD	17500 LBS



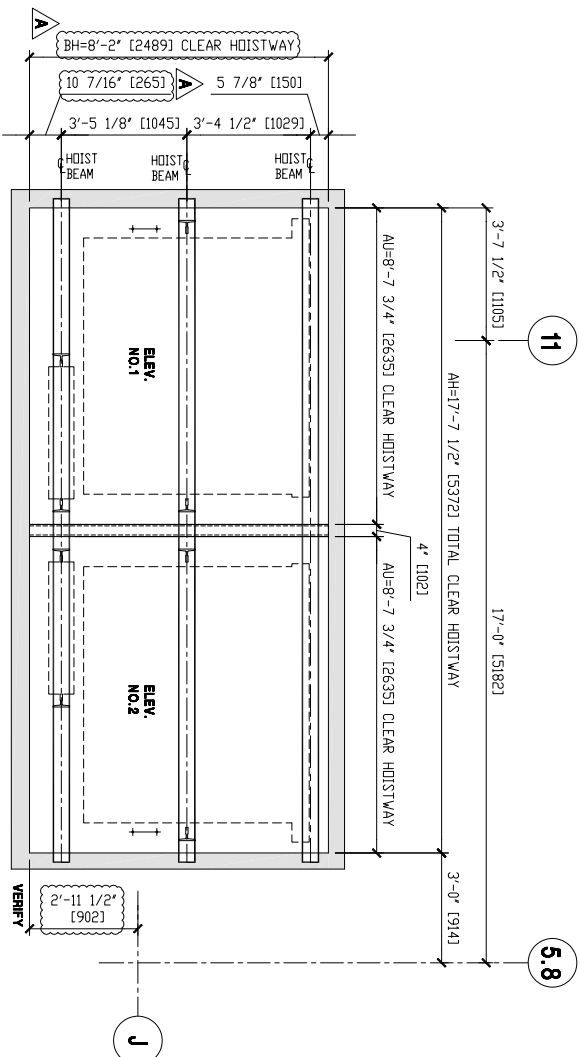
11

5.8

RAIL REACTION LOAD (PIT)				
ELEV.	R1	R2	R3	R4
1 & 2	12,500 Lbs.	11,700 Lbs.	10,800 Lbs.	6,800 Lbs.

BUFFER LOAD (EACH)		
ELEV.	P1	P2
1 & 2	20,250 Lbs.	16,650 Lbs.

PIT PLAN



11

5.8

HOISTING BEAM PLAN

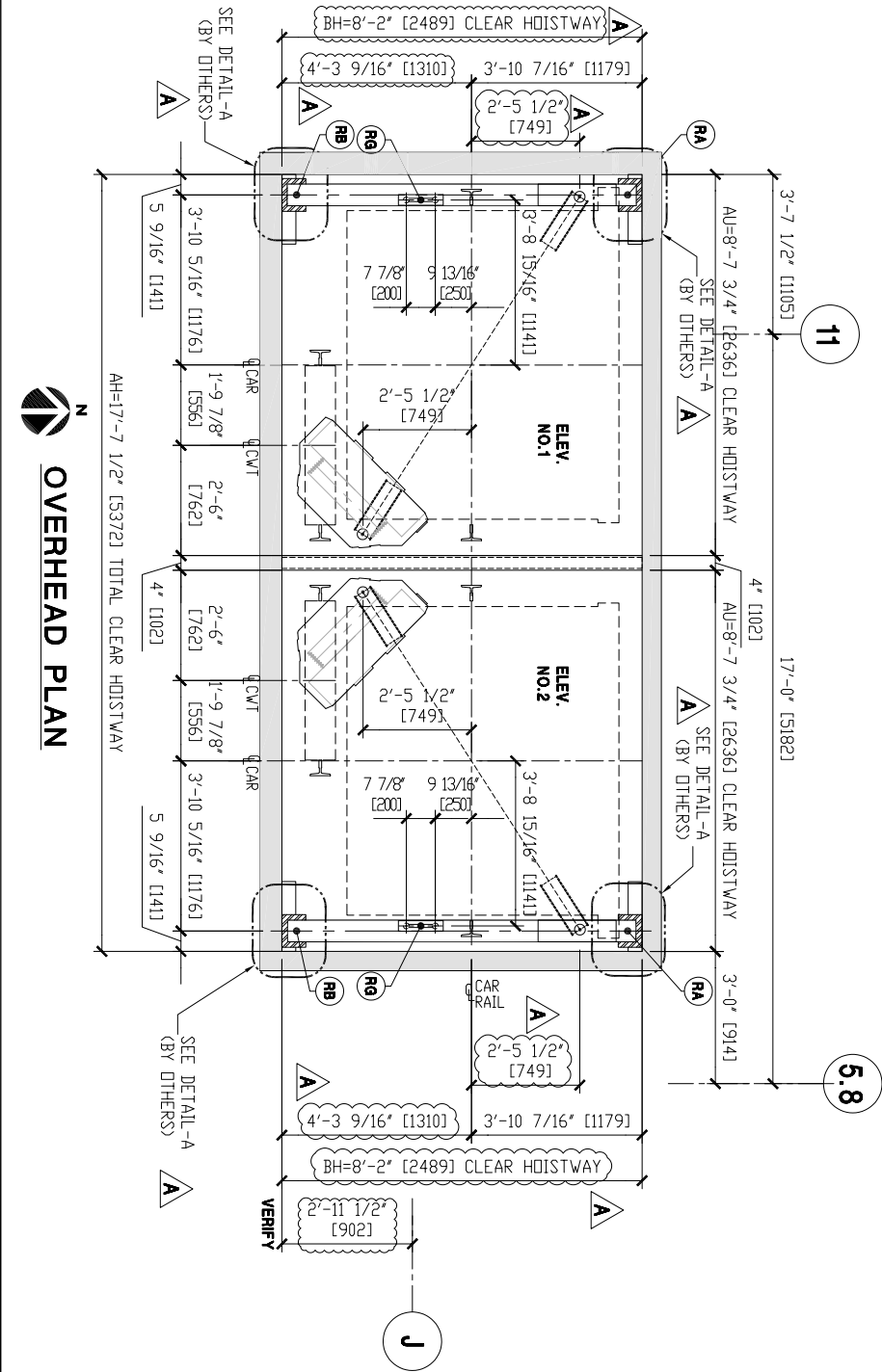
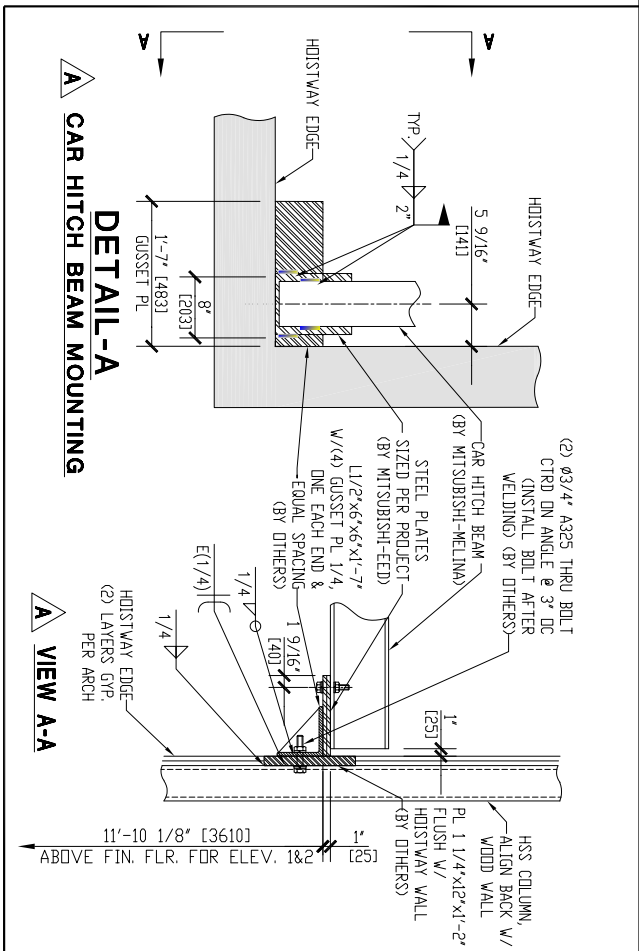
NOTE:
1. DIMENSIONS INSIDE BRACKETS ARE MILLIMETERS.
2. DO NOT SCALE THIS DRAWING.

NO.	DATE	BY	REVISIONS

A	12/04/17	PL	MADE REVISIONS, FINALIZED DRAWING.					
FINAL DRAWING								
THIS SHOP DRAWING WAS APPROVED ON 10/12/17. EQUIPMENT HAS BEEN RELEASED FOR FABRICATION. ANY CHANGES MADE AFTER APPROVAL WILL RESULT IN ADDITIONAL COST AND COMPLETION TIME.								
PROJECT: SSF HOTEL		<input type="checkbox"/> FOR APPROVAL <input type="checkbox"/> REVISIONS FOR APPROVAL <input checked="" type="checkbox"/> FINAL DISTRIBUTION <input type="checkbox"/> REVISIONS FINAL DISTRIBUTION						
ADDRESS: 560 GATEWAY BLVD								
CONTRACTOR: SOUTHERN HOSPITALITY SERVICES								
ARCHITECT: ARRIS STUDIO ARCHITECTS								
CONSULTANT: -								
DRAWN: W. CHEN	DATE: 7/11/17	APPROVED: J. CAO						
CHECKED: J. CAO	ELEV. NO.: 1-2							
DWS. TITLE: PIT & HOISTING BEAM PLAN								
CONTRACT NO.: ACAN-12352								
DWS. NO.: R00D102								



OVERHEAD REACTION LOADS		
LOAD	STATIC	DYNAMIC
RA	4,300 Lbs.	8,400 Lbs.
RB	1,200 Lbs.	2,300 Lbs.
RG	1,000 Lbs AT SAFETY APPLICATION	



NOTE:	
1. DIMENSIONS INSIDE BRACKETS ARE MILLIMETERS.	
2. DO NOT SCALE THIS DRAWING.	
NO.	DATE
BY	REVISIONS
A	12/04/17
PL	MAKE REVISIONS, FINALIZED DRAWING.
FINAL DRAWING	
THIS SHOP DRAWING WAS APPROVED ON 10/12/17. EQUIPMENT HAS BEEN RELEASED FOR FABRICATION. ANY CHANGES MADE AFTER APPROVAL WILL RESULT IN ADDITIONAL COST AND COMPLETION TIME.	
PROJECT: SSF HOTEL	
ADDRESS: 560 GATEWAY BLVD	
CONTRACTOR: SOUTHERN HOSPITALITY SERVICES	
ARCHITECT: ARRIS STUDIO ARCHITECTS	
CONSULTANT: -	
DRAWN: W. CHEN	DATE: 7/11/17
CHECKED: J. CAO	APPROVED: J. CAO
ELEV. NO.: 1-2	
DWG. TITLE: OVERHEAD PLAN	
CONTRACT NO.: ACAN-12352	
DWG. NO.: R00D103	

HOISTING BEAM AT (2) PLACES
LIFTING LOAD = 500 LBS. EACH
(BY OTHERS)

CAR HITCH BEAM
SUPPORT
(BY OTHERS)
SEE E000103,
FOR DETAIL

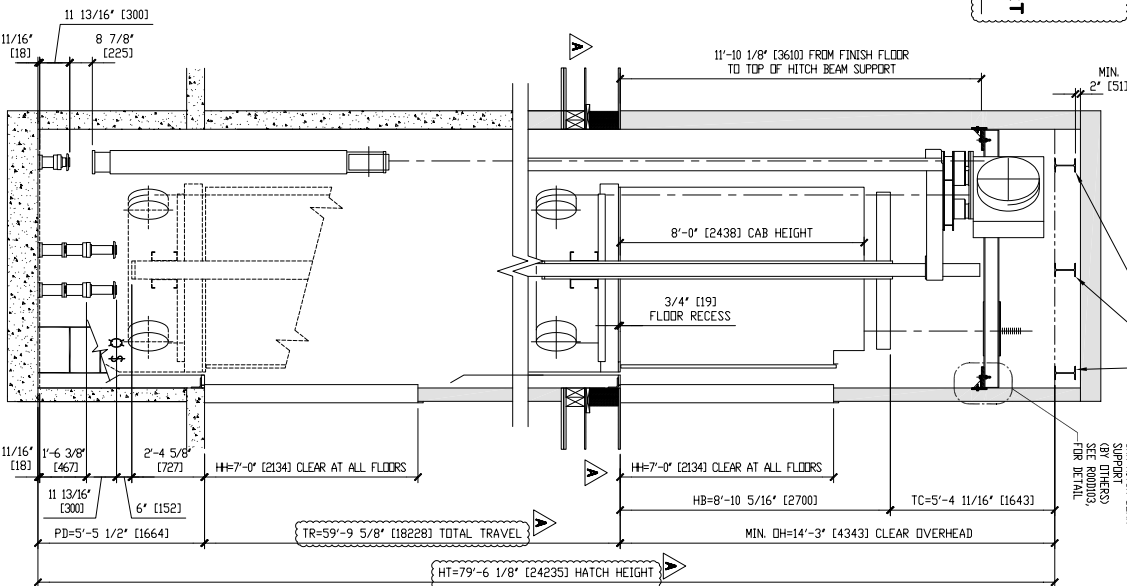
**BOTTOM OF
HOISTING BEAM**
EL.+7'-4-0 5/8"

TOP OF SUPPORT
EL.+7'-1'-7 3/4"

LEVEL 6 F.F.
EL.+6'-9'-9 5/8"

LEVEL *1 F.F.
EL.+0'-0"

PIT
EL.-6'-5-1/2"

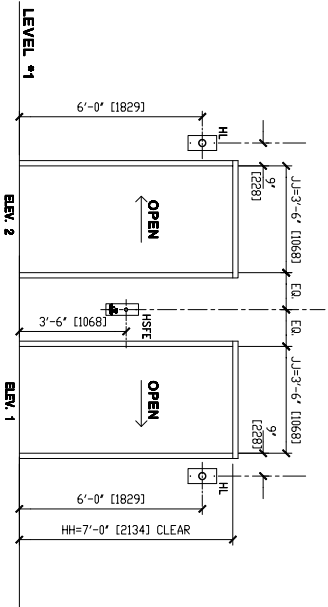
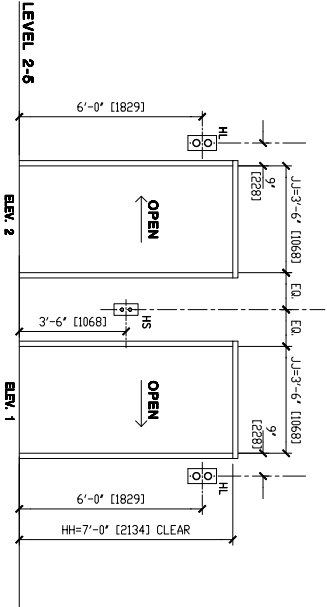
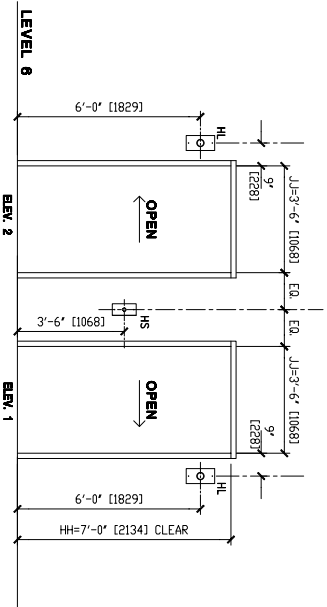


ELEV. 1 & 2 SHAFT ELEVATION

SUMP PIT, LADDER, L1/GFCI
OUTLET & SCREENING
(BY OTHERS)

LEGEND:

HSFE : HALL STATION W/ FE KEY SWITCH
HS : HALL STATION
HL : HALL LANTERN



FIXTURE LOCATIONS

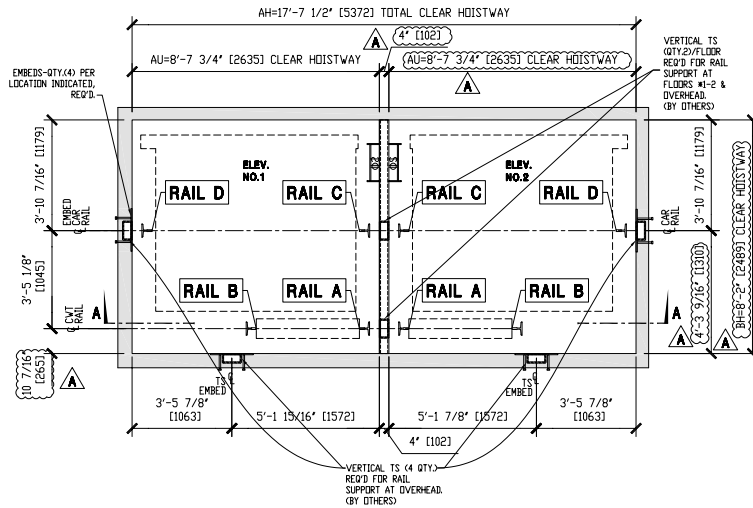
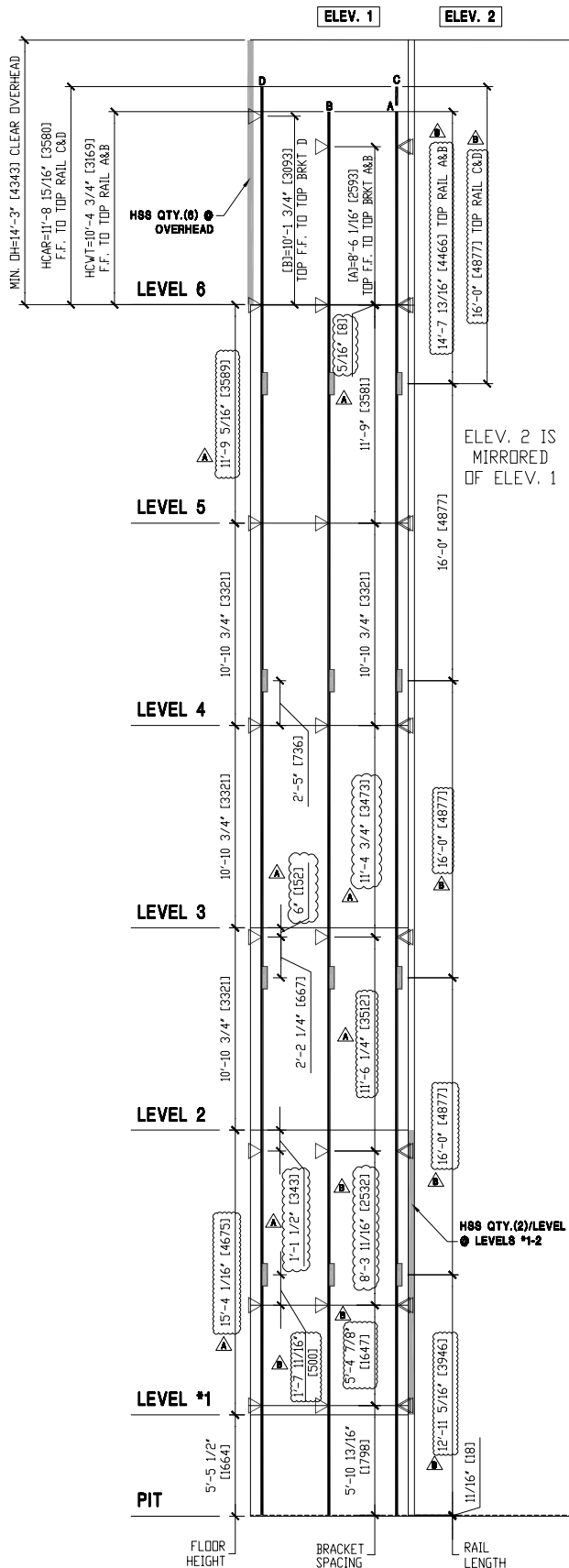
FLOOR TO FLOOR HEIGHT	
FLOOR - FLOOR	HEIGHT
5 - 6	11'-9 5/16"
4 - 5	10'-10 3/4"
3 - 4	10'-10 3/4"
2 - 3	15'-4 1/16"
*1 - 2	15'-4 1/16"

EMERGENCY RECALL OPERATION	
DESIGNATED	*1
ALTERNATE	2

NOTE:
1. DIMENSIONS INSIDE BRACKETS ARE MILLIMETERS.
2. DO NOT SCALE THIS DRAWING.

NO.	DATE	BY	REVISIONS
-----	------	----	-----------

A	12/04/17	PL	MADE REVISIONS, FINALIZED DRAWING.					
FINAL DRAWING								
THIS SHOP DRAWING WAS APPROVED ON 10/12/17. EQUIPMENT HAS BEEN RELEASED FOR FABRICATION. ANY CHANGES MADE AFTER APPROVAL WILL RESULT IN ADDITIONAL COST AND COMPLETION TIME.								
<input type="checkbox"/> FOR APPROVAL <input type="checkbox"/> REBID FOR APPROVAL <input checked="" type="checkbox"/> FINAL DISTRIBUTION <input type="checkbox"/> REBID FINAL DISTRIBUTION								
PROJECT: SSF HOTEL								
ADDRESS: 560 GATEWAY BLVD								
CONTRACTOR: SOUTHERN HOSPITALITY SERVICES								
ARCHITECT: ARRIS STUDIO ARCHITECTS								
CONSULTANT: -								
DRAWN: W. CHEN	DATE: 07/12/17	APPROVED: J. CAO						
CHECKED: J. CAO	ELEV. NO.: 1-2							
DWG. TITLE: SHAFT ELEVATION								
CONTRACT NO.: ACAN-12352								
DWG. NO.: R00D104								



NOTE:
1. DIMENSIONS INSIDE BRACKETS ARE MILLIMETERS.
2. DO NOT SCALE THIS DRAWING.

NO.	DATE	BY	REVISIONS
B	12/04/17	PL	MADE REVISIONS PER MELINA'S REQUEST.
A	12/04/17	PL	MADE REVISIONS, FINALIZED DRAWING.

FINAL DRAWING
THIS SHOP DRAWING WAS APPROVED ON 10/12/17. EQUIPMENT HAS BEEN RELEASED FOR FABRICATION. ANY CHANGES MADE AFTER APPROVAL WILL RESULT IN ADDITIONAL COST AND COMPLETION TIME.

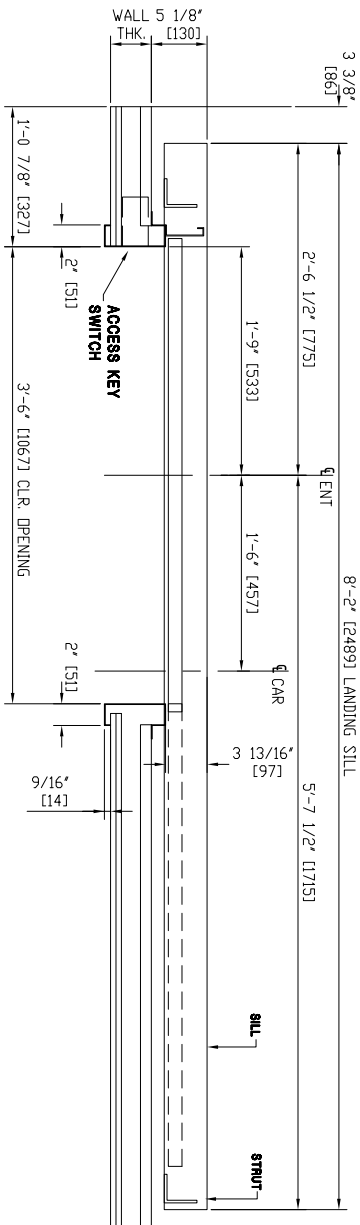
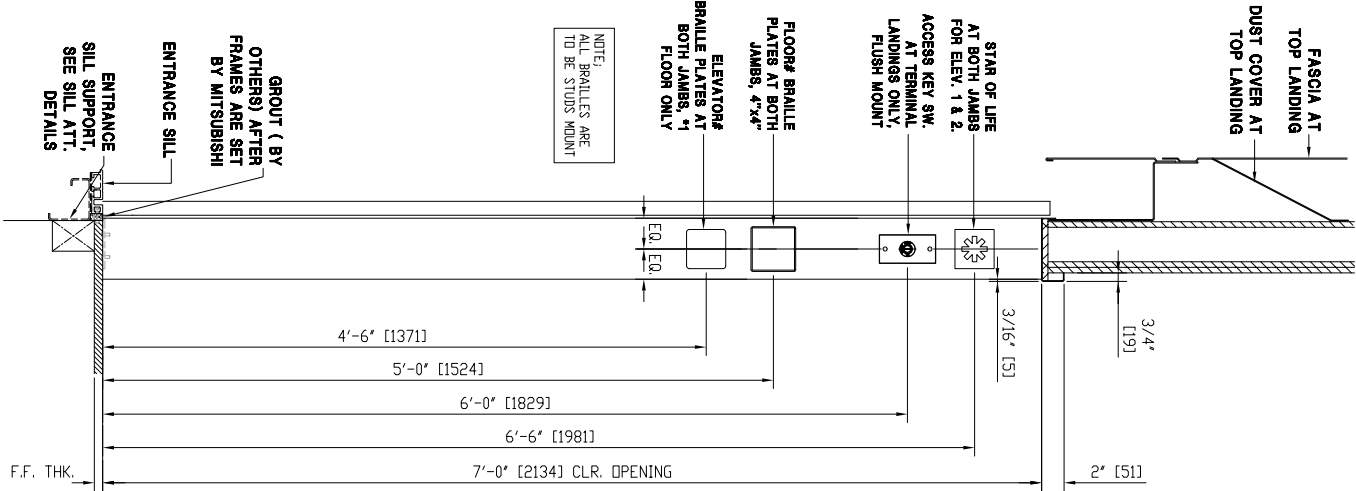
☐ FOR APPROVAL
☐ REVISED FOR APPROVAL
☒ FINAL DISTRIBUTION
☐ REVISED FINAL DISTRIBUTION

PROJECT: SSF HOTEL
ADDRESS: 550 GATEWAY BLVD
SOUTH SAN FRANCISCO, CA
CONTRACTOR: SOUTHERN HOSPITALITY SERVICES
ARCHITECT: ARRIS STUDIO ARCHITECTS
CONSULTANT: -
DRAWN: W. CHEN
CHECKED: J. CAO
DATE: 07/17/17
APPROVED: J. CAO
ELEV. NO.: 1-2
DWG. TITLE: RAIL SCHEDULE
CONTRACT NO.: ACAN-12352
DWG. NO.: R00D105



G.C. NOTES:

- DISTANCE BETWEEN CAR RAIL BRACKETS CANNOT EXCEED 11'-9" [3581] VERTICAL SPACING FOR ELEV. 1 & 2.
- LEVEL *1 HAS CONCRETE SHAFT WALLS, BUT VERTICAL HSS ARE STILL REQUIRED BETWEEN ELEV. 1 & 2 FROM LEVELS *1-2.
- VERTICAL HSS (QTY. 2) REQUIRED AT *1-2 FOR ELEV. 1 & 2. (BY OTHERS)
- VERTICAL HSS (QTY. 6) REQUIRED AT OVERHEAD FOR ELEV. 1 & 2. (BY OTHERS)
- PL 1/4"x12"x18" EMBEDS PROVIDED/INSTALLED BY GC.
EMBEDS @ LEVEL 3-6: FLUSH WITH F.F.
EMBEDS @ LEVEL 2: 14 1/2" BELOW F.F.
- EMBEDS WILL BE PROVIDED BY MITSUBISHI AND INSTALLED BY OTHERS.
- PIT LADDER, LIGHT, LIGHT SW, & GFCI OUTLET BY OTHERS.
- MINIMUM DISTANCE BETWEEN CAR RAIL BRACKETS AND FISHPLATE 1'-7 11/16" [500].



NOTE:
ALL BRAILLES ARE
TO BE STUDS MOUNT

GROUT (BY
OTHERS) AFTER
FRAMES ARE SET
BY MITSUBISHI
ENTRANCE SILL
SILL SUPPORT,
SEE SILL ATT.
DETAILS

3/4" [19]
3/16" [5]
2' [51]
4'-6" [1371]
5'-0" [1524]
6'-0" [1829]
6'-6" [1981]
7'-0" [2134] CLR. OPENING
F.F. THK.

SECTION

SPECIFICATION									
ELE#	WALL		MATERIAL & FINISH			STAR OF LIFE	BRAILLE PLATE	ACCESS SWITCH	JAMB CONSTRUCTION
	TYPE	THK.	SILL	DOOR	FRAME				
6	DRYWALL	8"	ALUM.	PRIME	PRIME	APPLIED	APPLIED	FLUSH MOUNTED	BOLTED
2-5	DRYWALL	8"	ALUM.	PRIME	PRIME	APPLIED	APPLIED	N/A	BOLTED
*1	DRYWALL	8"	ALUM.	SS#4	SS#4	APPLIED	APPLIED	FLUSH MOUNTED	BOLTED

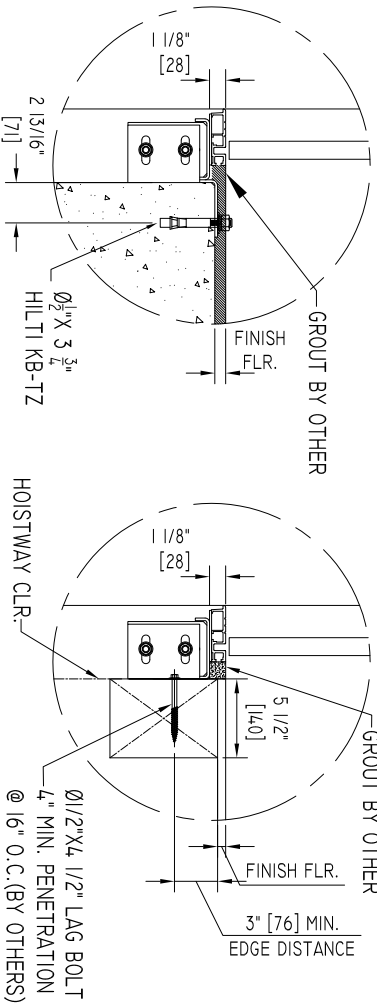


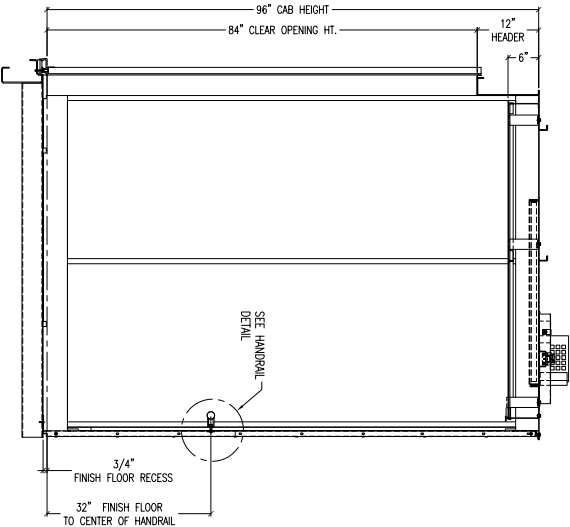
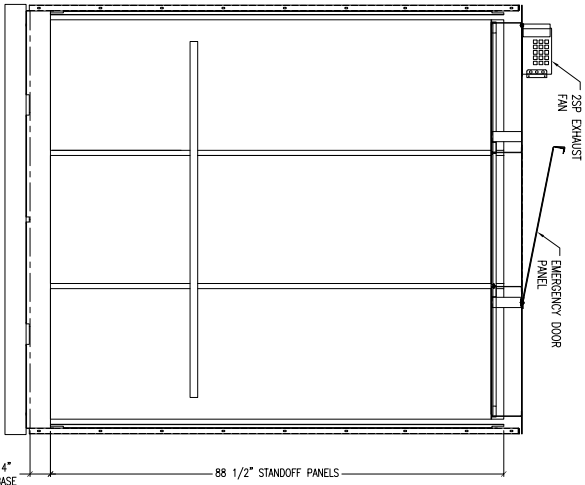
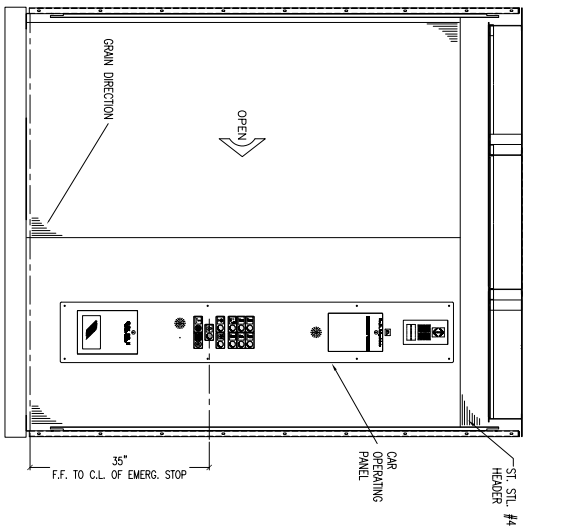
NO.	DATE	BY	REVISIONS
A	12/04/17	PL	MADE REVISIONS, FINALIZED DRAWING.
FINAL DRAWING THIS SHOP DRAWING HAS BEEN APPROVED ON 10/22/17. EQUIPMENT HAS BEEN RELEASED FOR FABRICATION. ANY CHANGES MADE AFTER APPROVAL WILL RESULT IN ADDITIONAL COST AND COMPLETION TIME.			
<input type="checkbox"/> FOR APPROVAL <input type="checkbox"/> REVISIONS FOR APPROVAL <input type="checkbox"/> FINAL DISTRIBUTION <input type="checkbox"/> REVISIONS FINAL DISTRIBUTION			
PROJECT: SSF HOTEL			
ADDRESS: 560 GATEWAY BLVD			
SOUTH SAN FRANCISCO, CA			
CONTRACTOR: SOUTHERN HOSPITALITY SERVICES			
ARCHITECT: ARRIS STUDIO ARCHITECTS			
CONSULTANT: -			
DRAWN: E. BRATHWOLD	DATE: 07/18/17		
CHECKED: J. CAO	APPROVED: J. CAO		
ELEV. NO.: 1-2			
DWG. TITLE: ENTRANCE			
CONTRACT NO.: ACAN-12352			
DWG. NO.: R00D201			

FLR	SILAB THK.	F.F. THK.
6	-	9/16"
5	-	1/2"
4	-	1/2"
3	-	1/2"
2	-	1/2"
*1	15"	9/16"

SILL ATTACHMENT
@ FLR. 1 ONLY

SILL ATTACHMENT
@ TYP. FLRS.

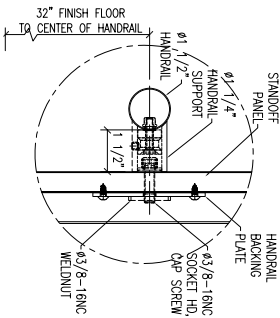
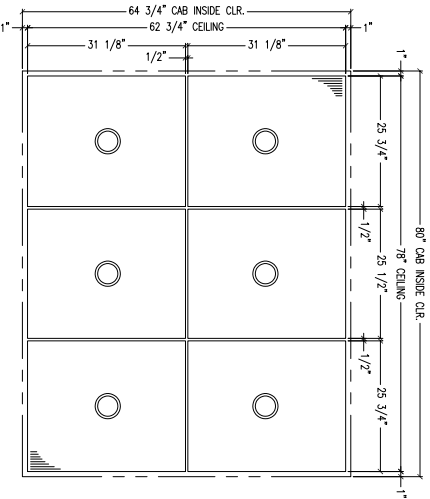
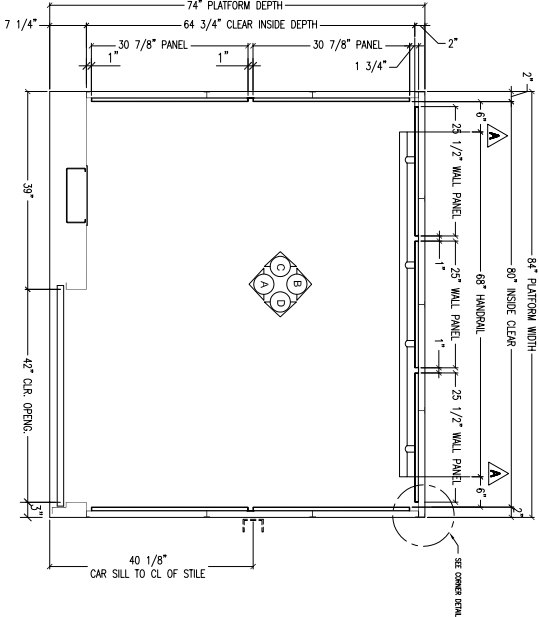




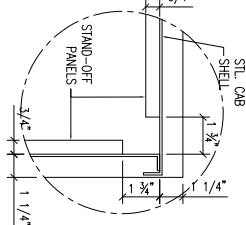
VIEW "A"
ELEV. 2 SHOWN
(ELEV. 1 MIRROR)

VIEW "B"

VIEW "C"
(VIEW "D" OPPOSITE)



CORNER
DETAIL



1. CAB INTERIOR COMPLIES WITH ASME 17.1

GENERAL NOTES:

NOTE:
1. DO NOT SCALE THIS DRAWING.

NO. DATE BY REVISIONS

A 12/04/17 PL. MOD. REVISIONS, FINALIZED DRAWING.

FINAL DRAWING

THIS SET OF DRAWINGS HAS BEEN RELEASED FOR FABRICATION. ANY CHANGES MADE AFTER APPROVAL WILL RESULT IN ADDITIONAL COST AND COMPLETION TIME.
☐ FOR APPROVAL
☐ REVISED FOR APPROVAL
☐ FINAL DISTRIBUTION
☐ REVISED FINAL DISTRIBUTION

PROJECT: 8SF HOTEL

ADDRESS: 660 GATEWAY BLVD
SOUTH SAN FRANCISCO, CA

CONTRACTOR: SOUTHERN HOSPITALITY SERVICES

ARCHITECT: ARRIS STUDIO ARCHITECTS

CONSULTANT: -

DRAWN: JC DATE: 10/18/17

CHECKED: J. CAO APPROVED: J. CAO

ELEV. NO.: 1 & 2

DWG. TITLE: CAB

CONTRACT NO. ACAN-12952

DWG. NO.: R00D301

CAB SPECIFICATIONS

CAB TYPE	500 TYPE
CAPACITY	3500 LBS
OPENING	SS
CAB FINISHES	
WALL PANELS	FINISH P. PLAN
COLOR	SKYLITE WALNUT 7804
FINISH	Ø 1 1/2" STAINLESS STEEL #4
HANDRAIL	LOCATION REAR WALL ONLY
FINISH	N/A
BUMPER	LOCATION N/A
BASE	STAINLESS STEEL #4
REVEALS	STAINLESS STEEL #4
FRONT RETURN	STAINLESS STEEL #4
HEADER	STAINLESS STEEL #4
CAB DOOR(S)	STAINLESS STEEL #4
CAB SILL	ALUMINUM
FLOOR RECESS	3/4"
CAB SILL EXTENSION	N/A
FINISH FLOOR	BY OTHERS
CELING	24 LED DOWNLIGHTS
CAB OPERATING PANEL	PANELS FLUSH MOUNTED FACEPLATE COP
IN CAR LANTERN	N/A
EMERGENCY LIGHT(S)	WIRE 2 CAR LIGHTS
PAD	N/A
HOOCS	N/A
FAN	2 SPEED (MITS. STANDARD)
DOOR PROTECTION	MBS



1 3/16" [30]

FULL-ILLUMINATION
TYPE BUTTON
(YELLOW-ORANGE WHEN ILLUMINATED)

YELLOW-ORANGE WHEN
ILLUMINATED

DETAIL-F



INSIDE SERVICE CABINET:

1. INSPECTION SWITCH
2. CAB LIGHT SWITCH
3. BLOWER SWITCH (ON/OFF)
4. BLOWER SWITCH (HIGH/LOW)
5. INDEPENDENT SERVICE SWITCH
6. RUN / STOP SWITCH
7. STANDBY LIGHTING MOMENTARY TYPE SWITCH
8. DUPLEX OUTLET, 120 VOLTS, AC, GFCI PROTECTED

NOTE:

1. DIMENSIONS INSIDE BRACKETS ARE MILLIMETERS.
2. DO NOT SCALE THIS DRAWING.
3. ALL TEXT TO BE 1/4" [6] TALL, HELVETICA TYPE FONT

BLACK FILLED, UNLESS OTHERWISE SPECIFIED.

NO.	DATE	BY	REVISIONS
-----	------	----	-----------

☐ FOR REFERENCE ONLY

THIS SHOP DRAWING WAS APPROVED ON 10/12/17. EQUIPMENT HAS BEEN RELEASED FOR FABRICATION. ANY CHANGES MADE AFTER APPROVAL WILL RESULT IN ADDITIONAL COST AND COMPLETION TIME.

☐ FOR REFERENCE ONLY
☐ REVISED FOR APPROVAL
☒ FINAL DISTRIBUTION
☐ REVISED FINAL DISTRIBUTION

☒ FINAL DISTRIBUTION
☐ REVISED FINAL DISTRIBUTION

7D

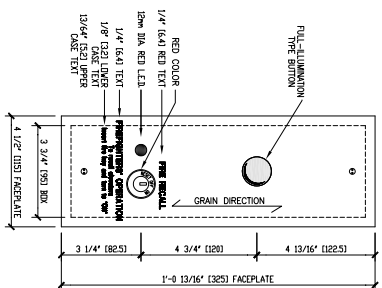
CISCO, CA

QUALITY SERVICES

ARCHITECTS

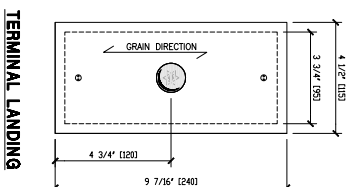
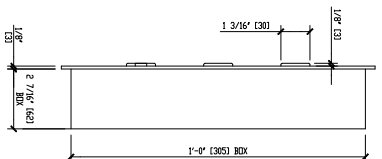
07/13/17

APPROVED: J. CAO



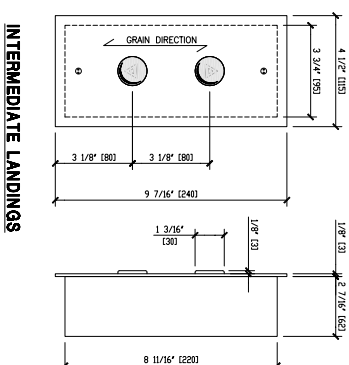
MAIN LANDING

HALL BUTTON (MAIN)			
ELEV. NO.	FLOOR	QTY.	LOCATION
1-2	1	1	
TOTAL QTY. 1			



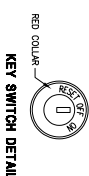
TERMINAL LANDING

HALL BUTTON (TERMINAL)			
ELEV. NO.	FLOOR	QTY.	LOCATION
1-2	6	1	
TOTAL QTY. 1			



INTERMEDIATE LANDINGS

HALL BUTTON (INTERMEDIATE)			
ELEV. NO.	FLOOR	QTY.	LOCATION
1-2	2-5	4	
TOTAL QTY. 4			



KEY SWITCH DETAIL

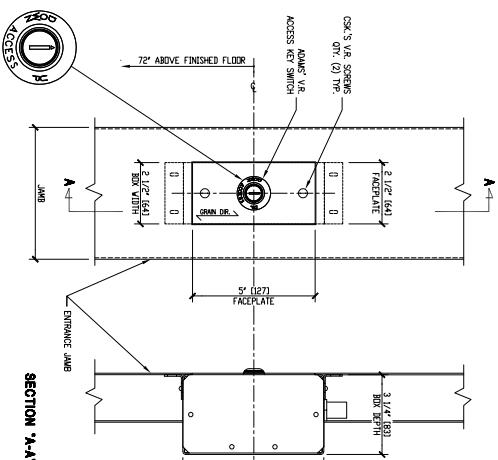
HALL BUTTON

HALL BUTTON SPECIFICATIONS			
MATERIAL AND FINISH	B2 STAINLESS STEEL #4		
OF FACEPLATE	B2 STAINLESS STEEL #4		
POSH BUTTON	LED (WHITE WHEN ILLUMINATED)		
FE KEY SWITCH	FIREMAN'S KEY SWITCH, PHASE 1		
CONNA KEY SWITCH	FIREMAN'S KEY SWITCH, PHASE 1		
ETCHING	HELVETICA-TYPE FONT (BLACK)		
FIRE RECALL LIGHT	LED (RED WHEN ILLUMINATED)		
ELEVATOR EMERGENCY POWER LIGHT	LED (RED WHEN ILLUMINATED)		

NOTE:
1. DIMENSIONS INSTEAD OF INCHES ARE MILLIMETERS.
2. DO NOT SCALE THIS DRAWING.

A 12/04/17 RE. FINISHED DRAWING.			
THIS SHOP DRAWING WAS APPROVED ON 10/22/17. EQUIPMENT HAS BEEN CHECKED FOR CORRECTNESS AND MODIFIED AFTER APPROVAL WILL RESULT IN ADDITIONAL COST AND COMPLETION TIME.			
PROJECT: 88F HOTEL			
ADDRESS: 860 GATEWAY BLVD.			
SOUTH SAN FRANCISCO, CA			
CONTRACTOR: SOUTHERN HOSPITALITY SERVICES			
ARCHITECT: ARIS STUDIO ARCHITECTS			
CONSULTANT: -			
DRAWN: E. GRATHWOL	DATE: 07/18/17		
CHECKED: -	APPROVED: -		
ELEV. NO.: 1-2			
DWG. TITLE: FIXTURES			
CONTRACT NO.: ACAN-12362			
DWG. NO.: R00D501			
		<input type="checkbox"/> FOR APPROVAL.	
		<input type="checkbox"/> REVISED FOR APPROVAL.	
		<input type="checkbox"/> FOR FINAL DISTRIBUTION	
		<input type="checkbox"/> REVISED FINAL DISTRIBUTION	

CUT-OUT FOR
FLUSH MOUNT FACEPLATE
WITH HAIRLINE JOINT



SECTION 'A-A'

TERMINAL LANDING
ACCESS KEY SWITCH TO BE SUPPLIED BY DECA

ACCESS KEY SWITCH

ACCESS SWITCH SPECIFICATIONS			
MATERIAL AND FINISH	QTY.	LOCATION	
OF FACEPLATE	1	4	FLOORS 1 & 6
KEY SWITCH	1	4	FLOORS 1 & 6

HALL BUTTON

HALL LANTERN SPECIFICATIONS			
MATERIAL AND FINISH	B2 STAINLESS STEEL #4		
OF FACEPLATE	B2 STAINLESS STEEL #4		
APPROX. PROJECTION	CLEAN, ASPHY LINE (WHITE SURFACE)		
APPLICATION LAMP	YELLOW-POWDER WHEN ILLUMINATED		