	INDEX				
	REVISIONS				ISSUE DATE
	2	4			27-Oct-16
PROJECT: Home2 Suites		PUBLIC AREAS			
ITEM # / SHEET NAME	MAIN CATEGORY	AREA		SUBCATEGORY	
IF-100	Banquette	Lobby		the Oasis	
IF-100.SD1	Banquette Specification	Banquette		Shop Drawing	
IF-100.SD2	Banquette Specification	Banquette		Shop Drawing	
IF-100.1	Fabric	Banquette		Fabric at Seat	
IF-100.2	Fabric	Banquette		Fabric at Back	
IF-100.3	Accent Pillow	Banquette			
IF-100.4	Accent Pillow	Banquette			
IF-100.5	Accent Pillow	Banquette			
IF-100.6	Accent Pillow	Banquette		Piping	
IF-101	Open				
IF-101.1	Open				
IF-102	Task Chair	Lobby & Boardroom			
IF-102.1	Task Chair Spec				
IF-103	Slipper Chair	Lobby		the Oasis	
IF-103.1	Fabric				
IF-103.2	Fabric				
IF-104	Open				
IF-104.1	Open				
IF-105	Ottoman at IF-103	Lobby		the Oasis	
IF-106	Windsor Arm Chair	Lobby		the Oasis	
IF-107	Swivel Arm Chair	Lobby		the Oasis	
IF-107.1	Fabric				
IF-107.2	Fabric				
IF-108	2-Top Dining Chair	Lobby		the Oasis	
IF-108.1	Fabric				
IF-108.2	Fabric				
IF-109	Slipper Chair	Lobby		the Oasis	
IF-109.1	Fabric				
IF-109.2	Fabric				
IF-110	Accent Pillow at IF-109				
IF-111	Ottoman				
IF-112	4-Top Dining Chair	Lobby & Breakfast Rm 1		Extended	
IF-112.1	Fabric				
IF-113	Stool at Trestle Table	Lobby		the Oasis	
IF-114	Soft Cubicle Ottoman	Lobby		the Oasis	
IF-115	Wing Chair	Lobby			
IF-115.1	Fabric				
IF-115.2	Fabric				
IF-116	Accent Pillow at IF-115	Lobby			
IF-117	Dining Chair at IF-115	Lobby			
IF-117.1	Fabric				
IF-117.2	Fabric				
IF-118	Ottoman at Trestle Console Table	Breakfast Room 2			
IF-119	Open				
IF-119.1	Open				
IF-120	Bar Stool	Lobby		Extended	
IF-121	Swivel Lounge Chair	Lobby & Breakfast Rm 1		Extended	
IF-121.1	Fabric				
IF-121.2	Fabric				
IF-122	Adirondack Chair	Fitness Center			
IF-122.1	Fabric				

STUDIO K DESIGN

8853 213 Street, Langley, BC, CA - Email: studiokdesign@outlook.com - Cel: 604-619-4119



PUBLIC AREAS - SEATING

SPECIFICATION SHEET

BRAND	Home2 Suites - Gateway, CA
AREA	Breakfast Room 1
ITEM	Dining Chair at Window Perch / ADA Section
MODEL / CATALOGUE #	Max Dining Chair
DESCRIPTION	Wood Frame and Back, Upholstered Seat
DIMENSIONS	21"W x 19"D x 34"H
SEAT HEIGHT	18"
CUSHION CONTENT	High density foam with Dacron (or EQ) wrap and batting.
FRAME FINISH	to match Wilsonart 8208 Fawn Cypress
UPHOLSTERY SEAT FABRIC	
SOURCE	Momentum Textiles
PATTERN	Tetra
COLOR	Verdant
CONTENT	100% Polyurethane / PVC Free
REDUCED ENV. IMPACT	Greenguard Gold Certified PVC Free
BACKING	Polyester
DURABILITY	200,000 DR
FLAMMABILITY	CA Bull 117 2013 UFAC Class 1 NFPA 260 Class 1
WIDTH	54"
REPEAT	25`L x 24.75`W
MAINTENANCE	W - Water Based Foam or Cleaner Foam; Bleach Cleanable (4:1)
ACT NOTE re. DURABILITY	Multiple factors affect fabric durability and appearance retention; including end user application and proper maintenance. Wyzenbeek results above 100,000 double rubs have not been shown to be an indicator of increased fabric life span.

REV #	4 - ADD ITEM
REF #	IF-126A
VENDOR REF #	TZS
VENDOR NAME	2zero6
CONTACT	Lindy Clark
PHONE	T: 206-384-0834
EMAIL	E: info@2zero6.com



LEAD TIME	
TOTAL QUANTITY	2
VERIFIED QUANTITY	
UNIT PRICE	

TOTAL	
-------	--

STUDIO K DESIGN

8853 213 Street, Langley, BC, CA - Email: studiokdesign@outlook.com - Cel: 604-619-4119

[illegible]

INDEX

ISSUE DATE

2

4

27-Oct-16

PROJECT: Home2 Suites

PUBLIC AREAS

[illegible]

STUDIO K DESIGN

PUBLIC AREAS - LIGHTING

SPECIFICATION SHEET

BRAND	Home2 Suites - Gateway, CA
AREA	Extended Lobby - Window Perch
ITEM	Table Lamp
MODEL	Duron
MODEL #	27160-1
WEIGHT	12
DIMENSIONS	23" H
	SHADE: 10" H X 14" W X 0" D
WATTAGE	150W
BULBS	1

REV #	1
REF #	IF-209
VENDOR REF #	UTT / REV
VENDOR NAME	Uttermost & Revelation
	Yvonne Onderwater, Prolite Agencies
	Cell: 604-308-5225
	Email: yvonne@proliteagencies.ca

ILLUSTRATION



REQUIREMENTS	Must be UL approved, with label affixed.
	Must be of contract quality and suitable for commercial use.
	All lamping must meet requirements listed in the Home2 standards manual.
	All materials and methods of construction must comply with state, local, fire and life safety codes, and Home2 Suites standards.

NOTES

- Bulb is not included

LEAD TIME	
TOTAL QUANTITY	3
VERIFIED QUANTITY	
UNIT PRICE	

	TOTAL	
--	-------	--

STUDIO K DESIGN

8853 213 Street, Langley, BC, CA - Email: studiokdesign@outlook.com - Cel: 604-619-4119

[illegible]

STUDIO K DESIGN

8853 213 Street, Langley, BC, CA - Email: studiokdesign@outlook.com - Cel: 604-619-4119



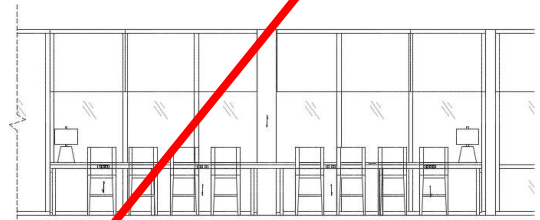
LOBBY - MILLWORK

SPECIFICATION SHEET

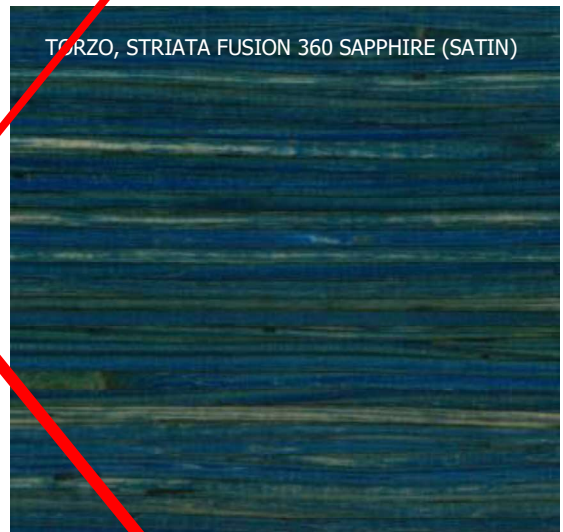
BRAND	Home2 Suites - Gateway, CA
AREA	Extended Lobby
ITEM	Window Perch
DESCRIPTION	Counter Height Table at Window Wall
DIMENSIONS	Refer to Shop Drawing(s) Modified Home2 Suites Prototype 2016
STYLE	Window perch with wood top and steel supports (34"H counter to meet ADA Guidelines)
TOP MAT'L / FINISH	Source: Torzo Sustainable Surfaces Product: Striata Fusion 360 Panel Color: Sapphire Finish: Satin Dimensions: Panel - 36"W x 96"D x 5/8"T
BASE MAT'L FINISH	Inclusive: Steel Tubing to match Dark Statutory Bronze US-20A (BHMA 62)
DIMENSIONS	1.5" x 1.5"
FINISH	Oil Rubbed Bronze
HARDWARE	Levelers - Hafele 651.13.906
WIRE MANAGER	Z-Clips - Doug Mockett VM28/2IN 00
POWER SUPPLY	Furnlite - 1202P-FUR 2 Outlet with Charging USB; Black Finish; 15' Power Cord
NOTES	Manufacturer to verify all dimensions in field prior to fabrication. Manufacturer to provide template to coordinate fabrication of top and base. All pieces to be secured together. Provide corrosion-proof hardware to secure pieces.
INSTRUCTIONS	All materials and methods of construction must comply with all local fire and life safety codes for use in hotels and other public spaces. All quantities to be verified by the hotel operator prior to purchasing. Must be of contract quality and suitable for commercial use. Show all pieces in Shop Drawings. Provide reproducible scaled shop drawings for Hotel Operator / Representative approval prior to production.
	NEXT PAGE

REV #	0
REF #	IF-310
VENDOR REF #	THG
VENDOR NAME	Thomas Hospitality Group
CONTACT	Jay Iglehart - Director of Business Dev.
PHONE	970-217-7072
EMAIL	jay@thomashospgroup.com

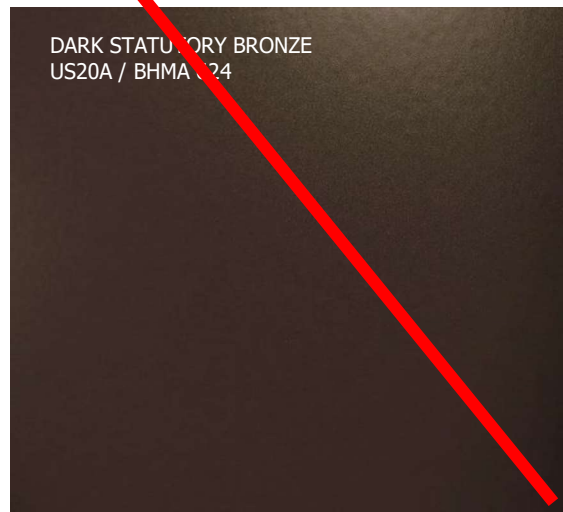
ILLUSTRATION



TORZO, STRIATA FUSION 360 SAPPHIRE (SATIN)



DARK STATUTORY BRONZE
US20A / BHMA 624





LOBBY - MILLWORK

SPECIFICATION SHEET

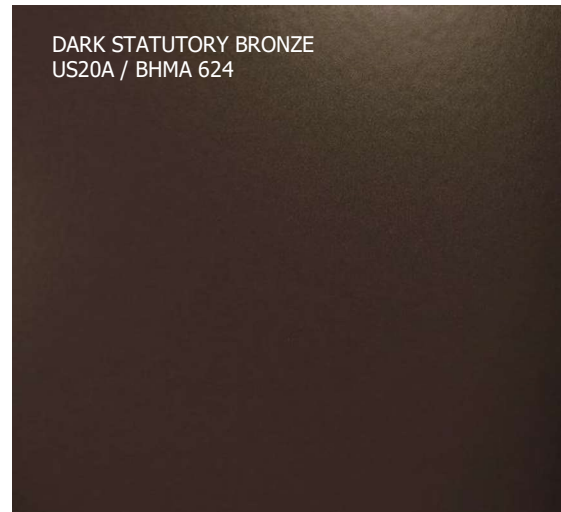
BRAND	Home2 Suites - Gateway, CA
AREA	Extended Lobby
ITEM	Window Perch
DESCRIPTION	Counter Height Table at Window Wall
DIMENSIONS	Refer to Shop Drawing(s) Modified Home2 Suites Prototype 2016
STYLE	Window perch with wood top and steel supports (30.25"H counter to meet ADA Guidelines)
TOP MAT'L / FINISH	Source: Torzo Sustainable Surfaces Product: Striata Fusion 360 Panel Color: Sapphire Finish: Satin Dimensions: Panel - 36"W x 96"D x 5/8"T
BASE MAT'L FINISH	Inclusive: Steel Tubing to match Dark Statutory Bronze US-20A (BHMA 624)
DIMENSIONS	1.5" x 1.5"
FINISH	Oil Rubbed Bronze
HARDWARE	Levelers - Hafele 651.13.906
WIRE MANAGER	Z-Clips - Doug Mockett VM28/2IN-90
POWER SUPPLY	Furnlite - 1202P-FUR 2 Outlet with Charging USB; Black Finish; 15' Power Cord
NOTES	Manufacturer to verify all dimensions in field prior to fabrication. Manufacturer to provide template to coordinate fabrication of top and base. All pieces to be secured together. Provide corrosion-proof hardware to secure pieces.
INSTRUCTIONS	All materials and methods of construction must comply with all local fire and life safety codes for use in hotels and other public spaces. All quantities to be verified by the hotel operator prior to purchasing. Must be of contract quality and suitable for commercial use. Show all pieces in Shop Drawings. Provide reproducible scaled shop drawings for Hotel Operator / Representative approval prior to production.
NEXT PAGE	

REV #	1
REF #	IF-310
VENDOR REF #	THG
VENDOR NAME	Thomas Hospitality Group
CONTACT	Jay Iglehart - Director of Business Dev.
PHONE	970-217-7072
EMAIL	jay@thomashospgroup.com

ILLUSTRATION



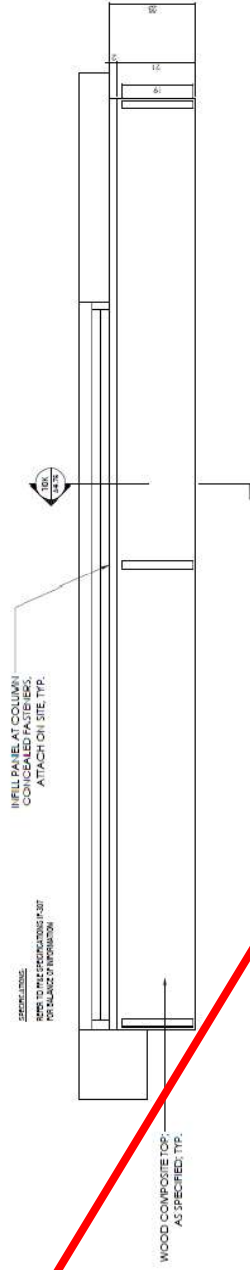
TORZO, STRIATA FUSION 360 SAPPHIRE (SATIN)



DARK STATUTORY BRONZE
US20A / BHMA 624



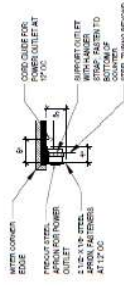
STUDIO K DESIGN
8853 213 Street, Langley, BC, CA - Email: studiokdesign@outlook.com - Cel: 604-619-4119



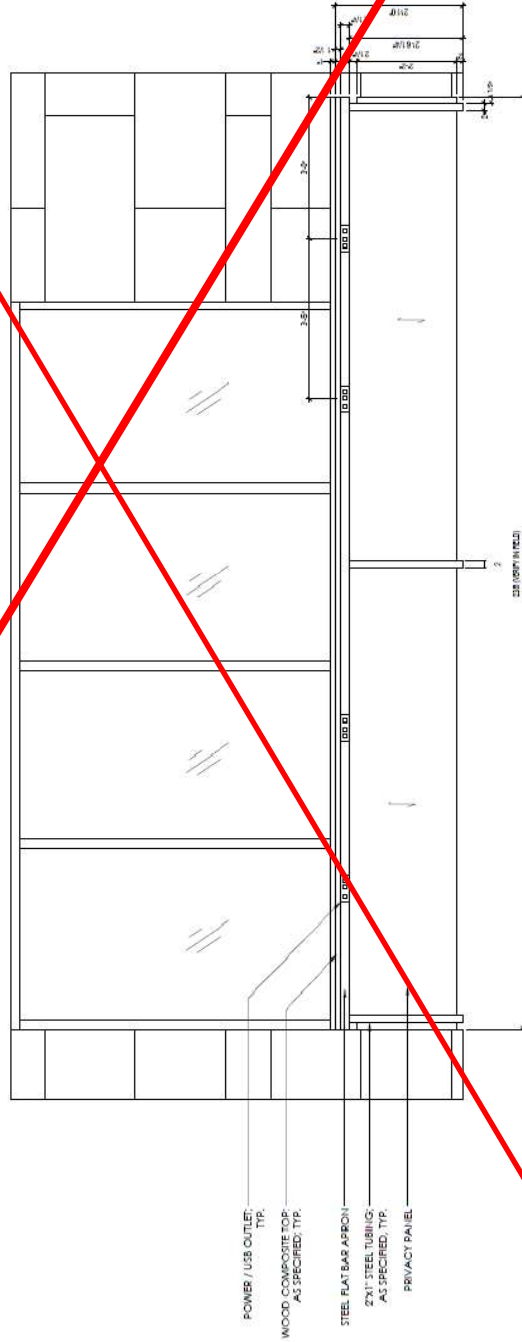
~~PLAN - WINDOW PERCH~~



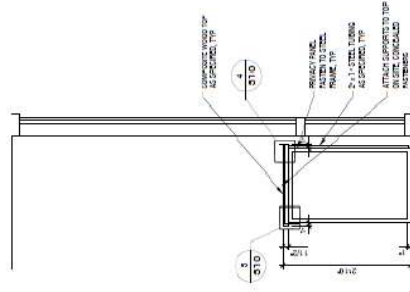
~~PERCH DETAIL~~



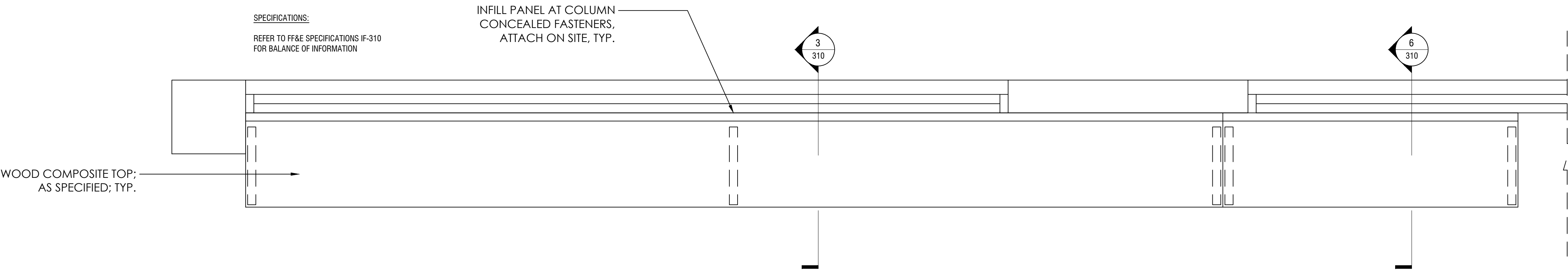
PERCH DETAIL



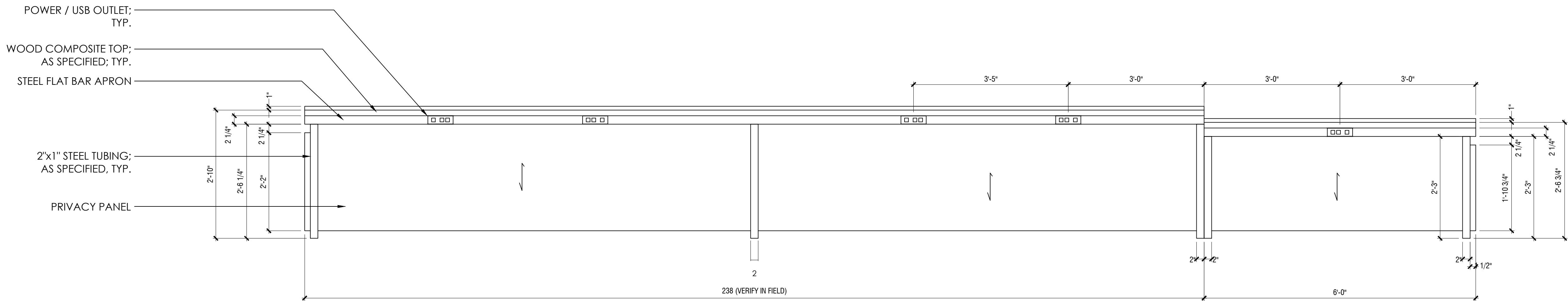
ELEVATION - WINDOW PERCH



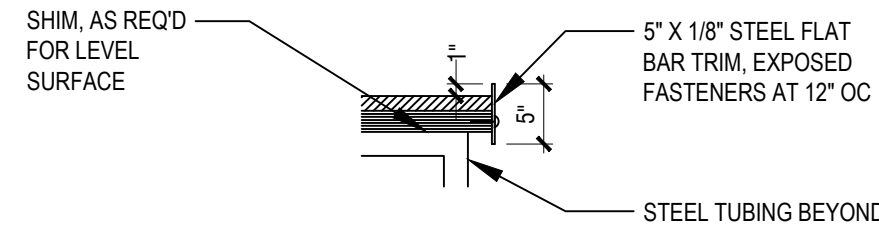
~~SECTION - WINDOW PERCH~~



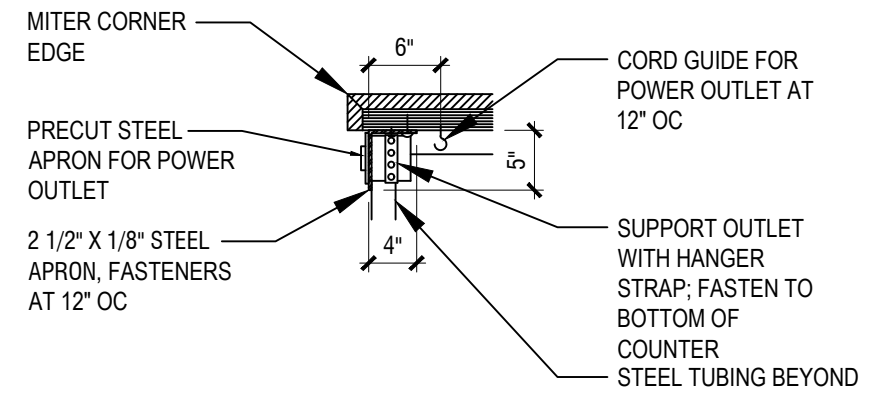
1
310
PLAN - WINDOW PERCH



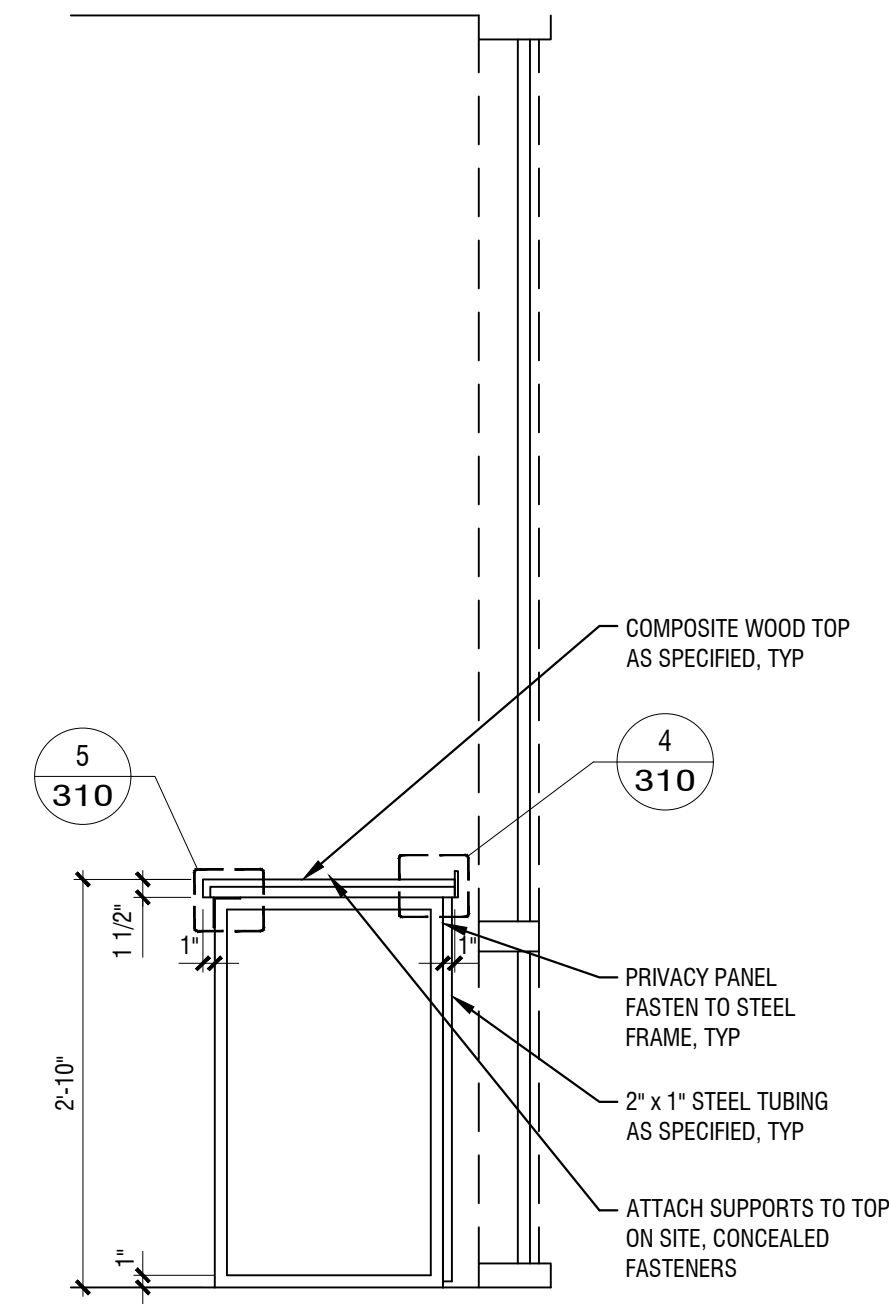
2
310
ELEVATION - WINDOW PERCH



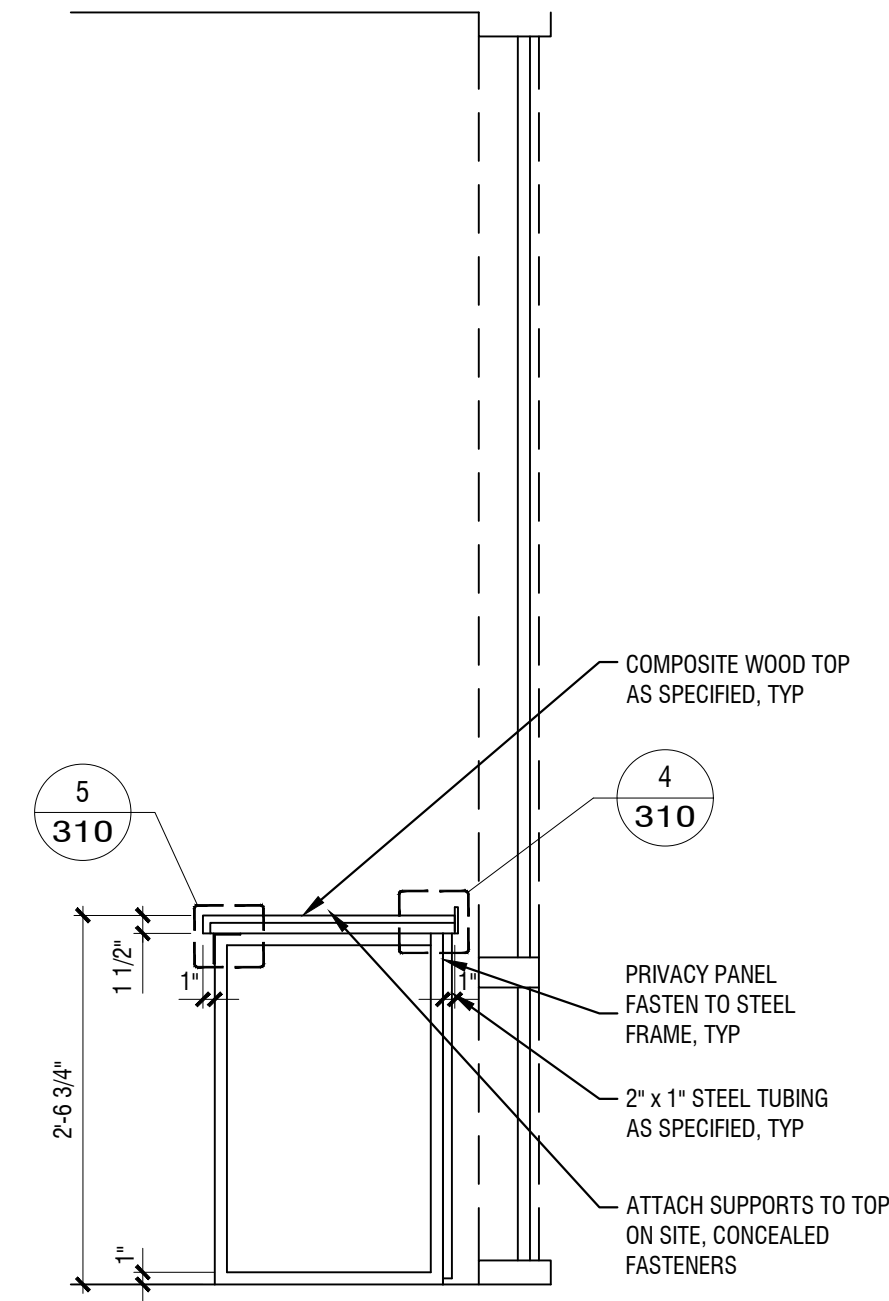
4
310
PERCH DETAIL



5
310
PERCH DETAIL



3
310
SECTION - WINDOW PERCH



6
310
ADA SECTION - WINDOW PERCH

PROJECT:
HOME2 SUITES BY HILTON
550 GATEWAY BLVD
SOUTH SAN FRANCISCO, CA
SOUTHER HOSPITALITY SERVICES, LLC
115 HOSPITALITY DRIVE, FLOWOOD, MS

DRAWING:
WINDOW PERCH
AT BREAKFAST ROOM 1
MODIFIED 2016 PROTOTYPE

SCALE:
3/4" = 1'-0"

DATE:
FEB. 11, 2017

DRAWN BY:
K SUTHERLAND

DRAWING NUMBER:
MW-310

REVISIONS:

REV #	DATE	NOTES
0	FEB. 11, 2017	RELEASE FOR REVIEW
1	OCT. 19, 2017	ADD ADA SECTION

- GENERAL:
- CONTRACTOR(S) SHALL VERIFY SITE CONDITIONS.
 - NOTIFY THE DESIGNER IMMEDIATELY OF ANY DISCREPANCY OR OMISSION.
 - CONTRACTOR(S) SHALL COMPLY WITH CONTRACT DOCUMENTS, PERFORMANCE REQUIREMENTS, AND ALL APPLICABLE LOCAL, STATE, AND FEDERAL REGULATIONS.
 - ALL MATERIALS SHALL MEET CODE.
 - THIS DRAWING, AND THE INFORMATION SHOWN OR IMPLIED HEREIN, CONSTITUTE THE ORIGINAL AND UNPUBLISHED WORK OF STUDIO K DESIGN COMPANY, AND MAY NOT BE USED OR DISCLOSED WITHOUT PRIOR WRITTEN CONSENT OF STUDIO K DESIGN COMPANY.
 - DO NO SCALE DRAWINGS.

STUDIO K
DESIGN COMPANY

8853 213 Street
Langley, BC V1M 1Z3

604-619-4119
studiokdesign@outlook.com