



## ENGINEERING GENERAL NOTES

- [illegible]

## MISCELLANEOUS GENERAL NOTES

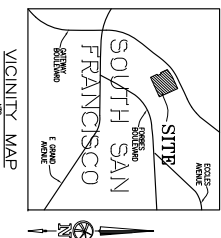
- [illegible]

IMPROVEMENT PLANS  
GATEWAY HOTEL  
CITY OF SOUTH SAN FRANCISCO  
SAN MATEO COUNTY CALIFORNIA

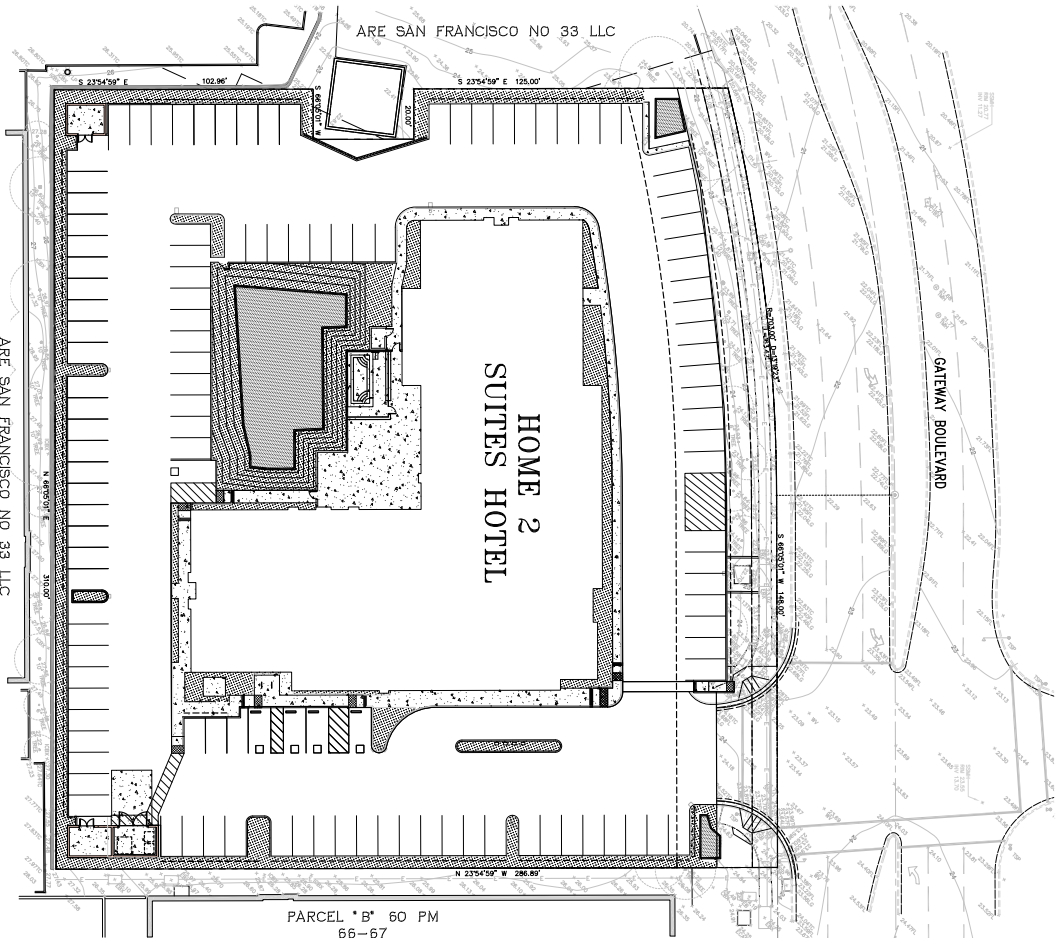
JANUARY 2018

**OWNER/DEVELOPER**  
SRI KRISHNA ENTERPRISE  
300 GATEWAY BLVD  
SOUTH SAN FRANCISCO, CA 94080

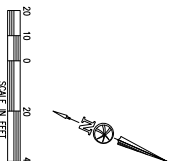
**CIVIL ENGINEER:**  
BELLECCI & ASSOCIATES, INC.,  
2290 DIAMOND BOULEVARD, SUITE 10  
CONCORD, CA 94520  
(925) 685-4569



SHEET INDEX	
1	SHEET INDEX AND GENERAL NOTES
2	GENERAL NOTES, LEGEND, AND ABBREVIATIONS
3	DEMOLITION PLAN AND EXISTING CONDITIONS
4	DIMENSION SITEPLAN
5	ROUGH GRADING PLAN
6	ROUGH GRADING PLAN
7	UTILITY PLAN
8	STORM WATER CONTROL PLAN
9	STORM WATER CONTROL PLAN CALCULATIONS
10	EROSION CONTROL - PHASE 1
11	EROSION CONTROL - PHASE 2
12	EROSION CONTROL - DETAILS
13	DETAILS
14	EXISTING CONDITION HYDROLOGY
15	PROPOSED CONDITION HYDROLOGY
16	SHADING AND STRIPING PLAN



PARCEL "B" 60 PM  
66-67



ARE SAN FRANCISCO NO 33 LLC

## KEY MAP

SCALE: 1" = 20'

ISSUED FOR BUILDING PERMIT  
APPROVAL ONLY. ENGINEERING DIVISION  
HAS NOT YET APPROVED THE PLANS.

WDID # 491715

 Bellecci & Associates, inc.

2290 Diamond Boulevard, Suite 100 Concord, CA 94521  
Phone (925) 685-4569 Fax (925) 685-4838

Phone (925) 685-4569 Fax (925) 685-4838

THE FOLLOWING DRAWINGS, SPECIFICATIONS, IDEAS, DESIGNS & ARRANGEMENTS REPRESENTED THEREIN SHALL REMAIN THE PROPERTY OF ARRIE STUDIO ARCHITECTS AND NO PART THEREOF SHALL BE COPIED, DISCLOSED TO OTHERS USED IN CONNECTION WITH ANY WORK OR PROJECT OTHER THAN THE SPECIFIC PROJECT FOR WHICH THEY WERE PREPARED AND DEVELOPED WITHOUT THE WRITTEN CONSENT OF ARRIE STUDIO ARCHITECTS. ANY CONTACT WITH THESE DRAWINGS OR SPECIFICATIONS SHALL CONSTITUTE CONCLUSIVE EVIDENCE OF ACCEPTANCE OF THESE RESTRICTIONS. SURVIVAL OF THESE DOCUMENTS FOR PUBLIC AGENCY REVIEW SHALL NOT BE CONSIDERED A WAIVER OF ARRIE STUDIO ARCHITECTS' RIGHTS. ARRIE STUDIO ARCHITECTS OCTOBER 2008-2012

[illegible]

PROJECT

**GATEWAY HOTEL**

550 GATEWAY BOULEVARD  
SOUTH SAN FRANCISCO, CA

**SHEET INDEX &  
GENERAL NOTES**

**SRI KRISHNA ENTERPRISE**  
300 GATEWAY BOULEVARD  
SOUTH SAN FRANCISCO, CA 94080



**CONTACT**  
805.547.2240  
ARRLS-STUDIO.COM

THOMAS, JR. ARRLS-CTC@GMAIL.COM  
STATION A, 11000 ARRLS-CTC@GMAIL.COM  
ARRL-CTC@ARRL.ORG/CONTACT/ARRL

**ARTIS**  
STUDIO ARCHITECTS



## A. AN ENO

- [illegible]

---

SYMBOL	DESCRIPTION	SYMBOL	DESCRIPTION
AC	ACROBATIC BASE	AC	ACROBATIC BASE
AR	AR REINFORCING	AR	AR REINFORCING
BE	BENT CHAIR	BE	BENT CHAIR
BL	BLOW OFF	BL	BLOW OFF
BO	BOLT	BO	BOLT
BR	BROWN	BR	BROWN
BS	BUSH	BS	BUSH
BU	BURIED	BU	BURIED
CA	CABLE	CA	CABLE
CB	CABLE BUSH	CB	CABLE BUSH
CC	CONCRETE	CC	CONCRETE
CD	CONCRETE DETECTOR	CD	CONCRETE DETECTOR
CE	CEILING	CE	CEILING
CF	CORNER	CF	CORNER
CH	CHIMNEY	CH	CHIMNEY
CI	CORNER IRON	CI	CORNER IRON
CL	CLAMP	CL	CLAMP
CM	CORNER METAL	CM	CORNER METAL
CO	CORNER	CO	CORNER
CP	CORNER PLATE	CP	CORNER PLATE
CR	CORNER REINFORCING	CR	CORNER REINFORCING
CS	CORNER STUD	CS	CORNER STUD
CT	CORNER TIE	CT	CORNER TIE
CU	CORNER UNION	CU	CORNER UNION
CV	CORNER VALVE	CV	CORNER VALVE
CW	CORNER WELD	CW	CORNER WELD
CX	CORNER X	CX	CORNER X
CZ	CORNER Z	CZ	CORNER Z
DA	DATA	DA	DATA
DB	DATA BASE	DB	DATA BASE
DC	DATA CENTER	DC	DATA CENTER
DD	DATA DRIVE	DD	DATA DRIVE
DE	DATA ENTRY	DE	DATA ENTRY
DF	DATA FILE	DF	DATA FILE
DG	DATA GATE	DG	DATA GATE
DH	DATA HANDLING	DH	DATA HANDLING
DI	DATA INPUT	DI	DATA INPUT
DJ	DATA JUNCTION	DJ	DATA JUNCTION
DK	DATA KEY	DK	DATA KEY
DL	DATA LINK	DL	DATA LINK
DM	DATA MANAGEMENT	DM	DATA MANAGEMENT
DN	DATA NETWORK	DN	DATA NETWORK
DO	DATA OUTPUT	DO	DATA OUTPUT
DP	DATA POINT	DP	DATA POINT
DQ	DATA QUERY	DQ	DATA QUERY
DR	DATA RECORD	DR	DATA RECORD
DS	DATA SOURCE	DS	DATA SOURCE
DT	DATA TABLE	DT	DATA TABLE
DU	DATA UNIT	DU	DATA UNIT
DV	DATA VALUE	DV	DATA VALUE
DW	DATA WIRE	DW	DATA WIRE
DX	DATA X	DX	DATA X
DY	DATA Y	DY	DATA Y
DZ	DATA Z	DZ	DATA Z
EA	EARTH	EA	EARTH
EB	EARTH BASE	EB	EARTH BASE
EC	EARTH CABLE	EC	EARTH CABLE
ED	EARTH DETECTOR	ED	EARTH DETECTOR
EE	EARTH ENTRY	EE	EARTH ENTRY
EF	EARTH EXIT	EF	EARTH EXIT
EG	EARTH GATE	EG	EARTH GATE
EH	EARTH HANDLING	EH	EARTH HANDLING
EI	EARTH INPUT	EI	EARTH INPUT
EJ	EARTH JUNCTION	EJ	EARTH JUNCTION
EK	EARTH KEY	EK	EARTH KEY
EL	EARTH LINK	EL	EARTH LINK
EM	EARTH MANAGEMENT	EM	EARTH MANAGEMENT
EN	EARTH NETWORK	EN	EARTH NETWORK
EO	EARTH OUTPUT	EO	EARTH OUTPUT
EP	EARTH POINT	EP	EARTH POINT
EQ	EARTH QUERY	EQ	EARTH QUERY
ER	EARTH RECORD	ER	EARTH RECORD
ES	EARTH SOURCE	ES	EARTH SOURCE
ET	EARTH TABLE	ET	EARTH TABLE
EU	EARTH UNIT	EU	EARTH UNIT
EV	EARTH VALUE	EV	EARTH VALUE
EW	EARTH WIRE	EW	EARTH WIRE
EX	EARTH X	EX	EARTH X
EY	EARTH Y	EY	EARTH Y
EZ	EARTH Z	EZ	EARTH Z
FA	FACILITY	FA	FACILITY
FB	FACILITY BASE	FB	FACILITY BASE
FC	FACILITY CABLE	FC	FACILITY CABLE
FD	FACILITY DETECTOR	FD	FACILITY DETECTOR
FE	FACILITY ENTRY	FE	FACILITY ENTRY
FF	FACILITY EXIT	FF	FACILITY EXIT
FG	FACILITY GATE	FG	FACILITY GATE
FH	FACILITY HANDLING	FH	FACILITY HANDLING
FI	FACILITY INPUT	FI	FACILITY INPUT
FJ	FACILITY JUNCTION	FJ	FACILITY JUNCTION
FK	FACILITY KEY	FK	FACILITY KEY
FL	FACILITY LINK	FL	FACILITY LINK
FM	FACILITY MANAGEMENT	FM	FACILITY MANAGEMENT
FN	FACILITY NETWORK	FN	FACILITY NETWORK
FO	FACILITY OUTPUT	FO	FACILITY OUTPUT
FP	FACILITY POINT	FP	FACILITY POINT
FQ	FACILITY QUERY	FQ	FACILITY QUERY
FR	FACILITY RECORD	FR	FACILITY RECORD
FS	FACILITY SOURCE	FS	FACILITY SOURCE
FT	FACILITY TABLE	FT	FACILITY TABLE
FU	FACILITY UNIT	FU	FACILITY UNIT
FV	FACILITY VALUE	FV	FACILITY VALUE
FW	FACILITY WIRE	FW	FACILITY WIRE
FX	FACILITY X	FX	FACILITY X
FY	FACILITY Y	FY	FACILITY Y
FZ	FACILITY Z		

ISSUED FOR BUILDING PERMIT  
APPROVAL ONLY. ENGINEERING DIVISION  
HAS NOT YET APPROVED THE PLANS.

**ARTIS**  
STUDIO ARCHITECTS

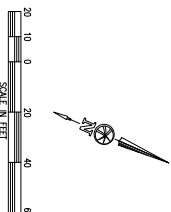
ADDRESS:  
1306 JOHNSON AVENUE  
SAN LUIS OBISPO, CA 93401  
CONTACT:  
805.567.2240  
ARTISSTUDIO.COM  
HONALEE ELLI, ARCHITECT, INTERIOR  
DESIGNER, AIA, LEED AP  
VERENA A. RYAN, ARCHITECT, INTERIOR  
DESIGNER, AIA, LEED AP

SRI KRISHNA ENTERPRISE  
300 GATEWAY BOULEVARD  
SOUTH SAN FRANCISCO, CA 94080

**GATEWAY HOTEL**  
550 GATEWAY BOULEVARD  
SOUTH SAN FRANCISCO, CA

**GENERAL NOTES, LEGEND  
& ABBREVIATIONS**

[illegible]



2290 Diamond Boulevard, Suite 100 Concord, CA 94522  
Phone (925) 685-4569 Fax (925) 685-4838

[illegible]

16164  
C01  
JANUARY 19, 2017  
PREF  
C4 OF C16





1-800-277-5800

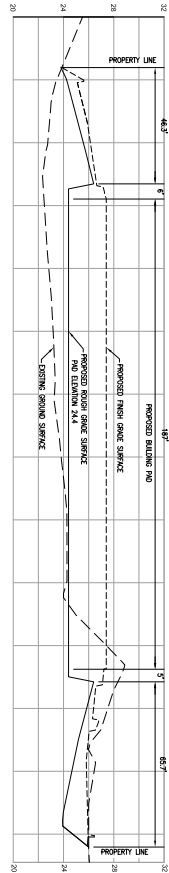
ARE SAN FRANCISCO  
NO 33 LLC

ARE SAN FRANCISCO NO 33 LLC

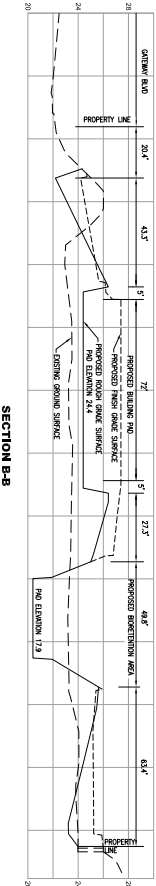
PARCEL "B"  
60 PM 66-67

GATEWAY BOULEVARD

SECTION A-A

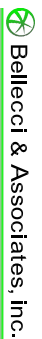


SECTION B-B



- ASSUMPTIONS
1. OVER EXHAUST 5' FROM BUILDING FOUNDATION AND 2' BELOW BUILDING AND FOUNDATION. SEE SPECIFICATIONS, REPORT PREPARED BY HANSEN & ASSOCIATES, DATED 10/10/2017.
  2. 1" OVER EXHAUSTION WITH PROPOSED AREA FOR LINTIL SPACES.
  3. 1" OVER EXHAUSTION WITH PROPOSED AREA FOR LINTIL SPACES.
  4. ASSOCIATES DATED 10/10/2017.
  5. 1" OVER EXHAUSTION WITH PROPOSED AREA FOR LINTIL SPACES.
  6. 1" OVER EXHAUSTION WITH PROPOSED AREA FOR LINTIL SPACES.
  7. 1" OVER EXHAUSTION WITH PROPOSED AREA FOR LINTIL SPACES.

ISSUED FOR BUILDING PERMIT  
APPROVAL ONLY. ENGINEERING DIVISION  
HAS NOT YET APPROVED THE PLANS.



Bellecci & Associates, Inc.  
Civil Engineering • Land Surveying  
2250 Diamond Boulevard, Suite 100 Concord, CA 94520  
Phone (925) 665-4669 Fax (925) 665-4668

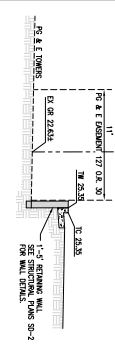
THE INCLUDED DRAWINGS, SPECIFICATIONS, IDEAS, DESIGNS & ARRANGEMENTS REPRESENTED THEREBY ARE AND SHALL REMAIN THE PROPERTY OF ARTIS STUDIO ARCHITECTS AND NO PART THEREOF SHALL BE COPIED, DISCLOSED TO OTHERS OR USED IN CONNECTION WITH ANY WORK OR PROJECT OTHER THAN THE SPECIFIC PROJECT FOR WHICH THEY HAVE BEEN PREPARED AND DEVELOPED. WITHOUT THE WRITTEN CONSENT OF ARTIS STUDIO ARCHITECTS, VERBAL CONTACT WITH THESE DRAWINGS OR SPECIFICATIONS SHALL CONSTITUTE CONCLUSIVE EVIDENCE OF ACCEPTANCE OF THESE RESTRICTIONS. SUBMITTAL OF THESE DOCUMENTS FOR PUBLIC AGENCY REVIEW SHALL NOT BE CONSIDERED A WAIVER OF ARTIS STUDIO ARCHITECTS' RIGHTS. ARTIS STUDIO ARCHITECTS COPYRIGHT 2008-2017

C5 OF C16	PROJECT	GATEWAY HOTEL 550 GATEWAY BOULEVARD SOUTH SAN FRANCISCO, CA
	CLIENT	SRI KRISHNA ENTERPRISE 300 GATEWAY BOULEVARD SOUTH SAN FRANCISCO, CA 94080
	DESIGNER	ARTIS STUDIO ARCHITECTS 1500 COMSTOCK AVENUE SAN LUIS OBISPO, CA 95070 805.477.2200 805.477.2201 WWW.ARTISSTUDIOARCHITECTS.COM
	DATE	1/14/18 JANUARY 15, 2017

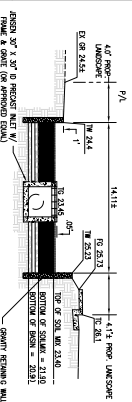


1:400-250-000

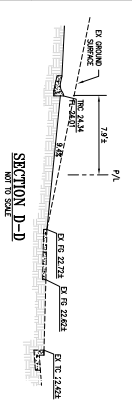
### SECTION A-A



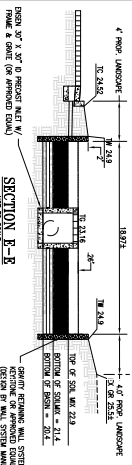
### SECTION B-B



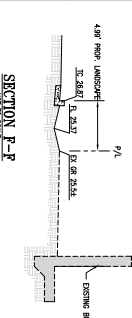
### SECTION C-C



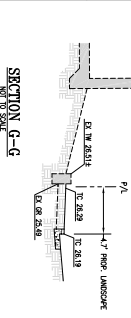
### SECTION D-D



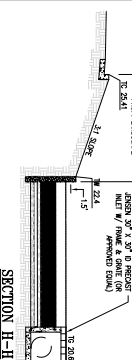
### SECTION E-E



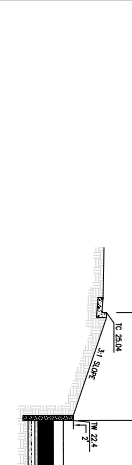
### SECTION F-F



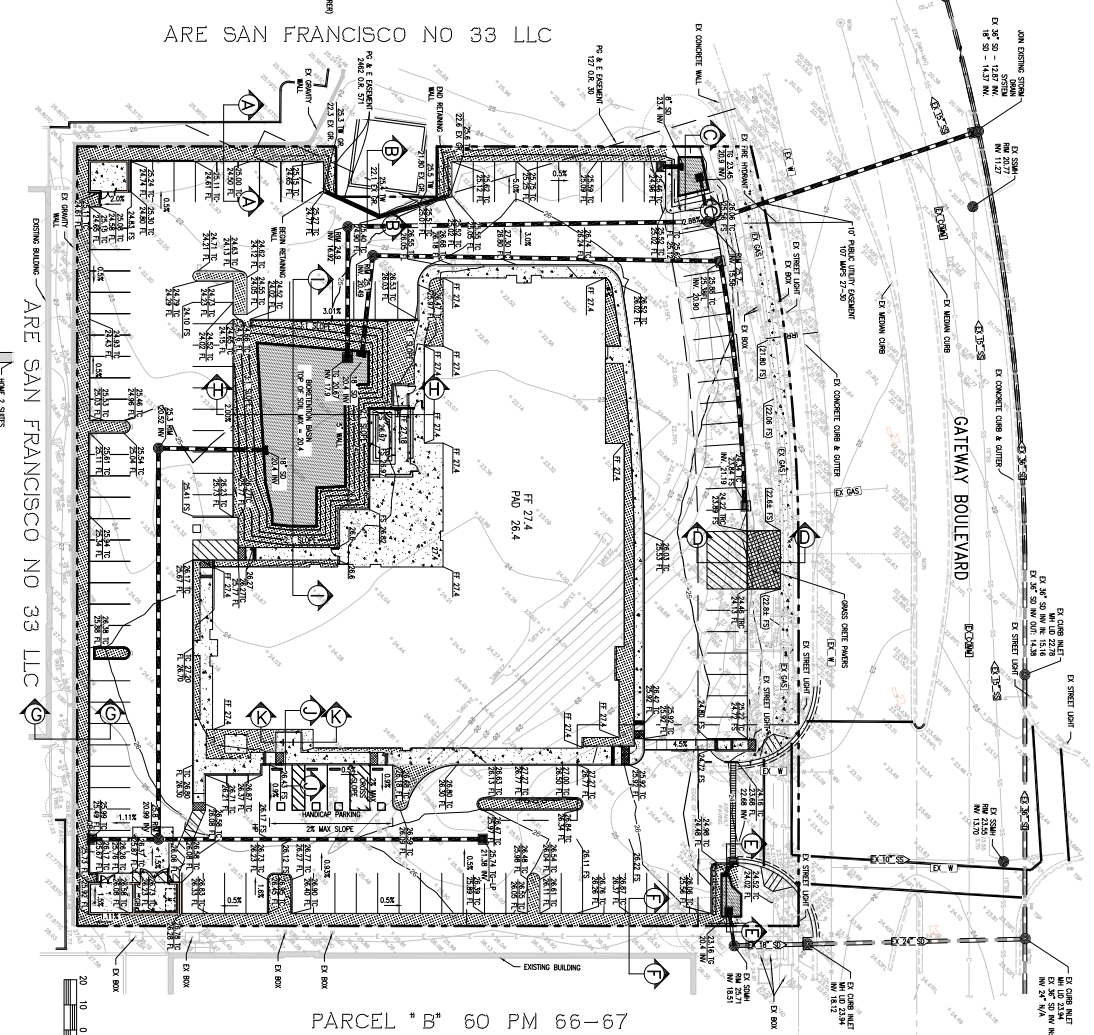
### SECTION G-G



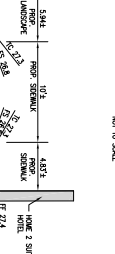
### SECTION H-H



### SECTION I-I



### SECTION J-J



### SECTION K-K

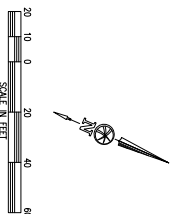



ISSUED FOR BUILDING PERMIT  
APPROVAL ONLY. ENGINEERING DIVISION  
HAS NOT YET APPROVED THE PLANS.

**Bellecci & Associates, Inc.**  
Civil Engineering • Land Surveying  
2250 Diamond Boulevard, Suite 100 Concord, CA 94520  
Phone (925) 665-4669 Fax (925) 665-4688

REVISION	DATE	PROJECT	GATEWAY HOTEL 550 GATEWAY BOULEVARD SOUTH SAN FRANCISCO, CA	GRADING PLAN	CLIENT	SRI KRISHNA ENTERPRISE 300 GATEWAY BOULEVARD SOUTH SAN FRANCISCO, CA 94080	CONTRACT NO.	14144	JANUARY 19, 2017	C6 OF C16

**ARIS**  
STUDIO ARCHITECTS  
300 GATEWAY AVENUE  
SOUTH SAN FRANCISCO, CA 94080  
PH: 415.720.0000  
WWW.ARISSTUDIOARCHITECTS.COM

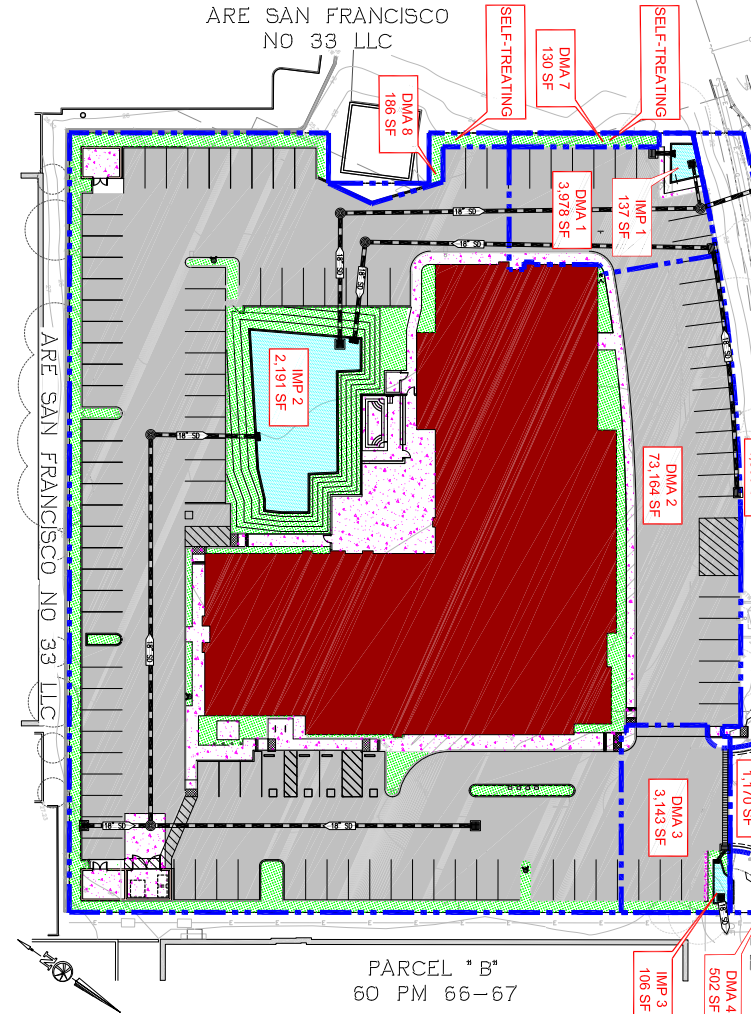


-  Bellecci & Associates, inc.





GATEWAY BOULEVARD



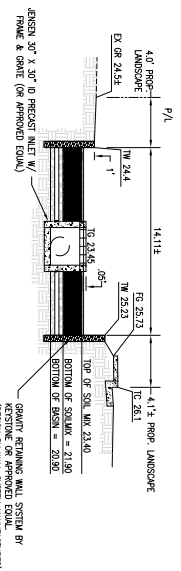
**LEGEND**

- PROPERTY BOUNDARY
- EXISTING STORM DRAIN
- PROPOSED STORM DRAIN
- ROOF
- ASPHALT PAVEMENT
- CONCRETE SIDEWALK
- WATER QUALITY BASIN
- LANDSCAPING AREA
- DRAINAGE MANAGEMENT AREA BOUNDARY
- UNDESIGNED LANDSCAPE PRACTICE-ABSTENTION AREA

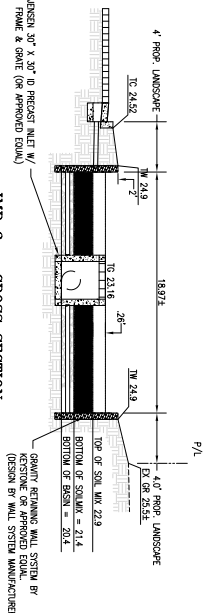
**DMA 1**  
9,772 SF

**IMP 1**  
11,895 SF

IMP 1 - CROSS SECTION  
NOT TO SCALE

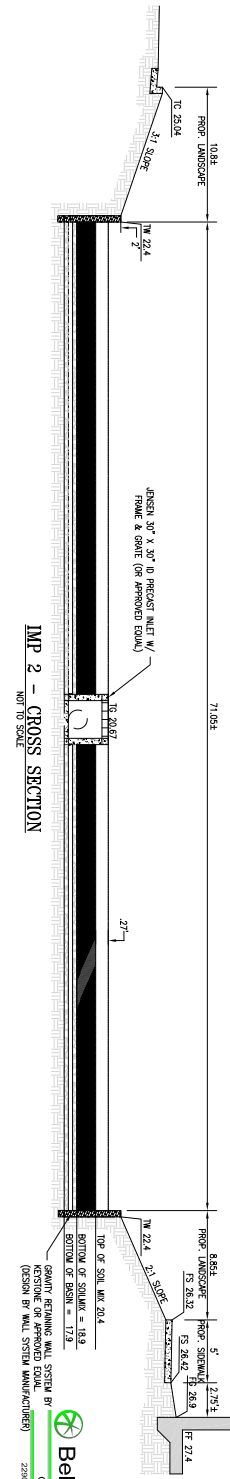


IMP 3 - CROSS SECTION  
NOT TO SCALE



ISSUED FOR BUILDING PERMIT  
APPROVAL ONLY. ENGINEERING DIVISION  
HAS NOT YET APPROVED THE PLANS.

IMP 2 - CROSS SECTION  
NOT TO SCALE





### IMP 1 SIZING CALCULATION

[illegible]

2020-2021		2019-2020		2018-2019		2017-2018		2016-2017		2015-2016		2014-2015		2013-2014		2012-2013		2011-2012		2010-2011		2009-2010		2008-2009		2007-2008		2006-2007		2005-2006		2004-2005		2003-2004		2002-2003		2001-2002		2000-2001		1999-2000		1998-1999		1997-1998		1996-1997		1995-1996		1994-1995		1993-1994		1992-1993		1991-1992		1990-1991		1989-1990		1988-1989		1987-1988		1986-1987		1985-1986		1984-1985		1983-1984		1982-1983		1981-1982		1980-1981		1979-1980		1978-1979		1977-1978		1976-1977		1975-1976		1974-1975		1973-1974		1972-1973		1971-1972		1970-1971		1969-1970		1968-1969		1967-1968		1966-1967		1965-1966		1964-1965		1963-1964		1962-1963		1961-1962		1960-1961		1959-1960		1958-1959		1957-1958		1956-1957		1955-1956		1954-1955		1953-1954		1952-1953		1951-1952		1950-1951		1949-1950		1948-1949		1947-1948		1946-1947		1945-1946		1944-1945		1943-1944		1942-1943		1941-1942		1940-1941		1939-1940		1938-1939		1937-1938		1936-1937		1935-1936		1934-1935		1933-1934		1932-1933		1931-1932		1930-1931		1929-1930		1928-1929		1927-1928		1926-1927		1925-1926		1924-1925		1923-1924		1922-1923		1921-1922		1920-1921		1919-1920		1918-1919		1917-1918		1916-1917		1915-1916		1914-1915		1913-1914		1912-1913		1911-1912		1910-1911		1909-1910		1908-1909		1907-1908		1906-1907		1905-1906		1904-1905		1903-1904		1902-1903		1901-1902		1900-1901		1899-1900		1898-1899		1897-1898		1896-1897		1895-1896		1894-1895		1893-1894		1892-1893		1891-1892		1890-1891		1889-1890		1888-1889		1887-1888		1886-1887		1885-1886		1884-1885		1883-1884		1882-1883		1881-1882		1880-1881		1879-1880		1878-1879		1877-1878		1876-1877		1875-1876		1874-1875		1873-1874		1872-1873		1871-1872		1870-1871		1869-1870		1868-1869		1867-1868		1866-1867		1865-1866		1864-1865		1863-1864		1862-1863		1861-1862		1860-1861		1859-1860		1858-1859		1857-1858		1856-1857		1855-1856		1854-1855		1853-1854		1852-1853		1851-1852		1850-1851		1849-1850		1848-1849		1847-1848		1846-1847		1845-1846		1844-1845		1843-1844		1842-1843		1841-1842		1840-1841		1839-1840		1838-1839		1837-1838		1836-1837		1835-1836		1834-1835		1833-1834		1832-1833		1831-1832		1830-1831		1829-1830		1828-1829		1827-1828		1826-1827		1825-1826		1824-1825		1823-1824		1822-1823		1821-1822		1820-1821		1819-1820		1818-1819		1817-1818		1816-1817		1815-1816		1814-1815		1813-1814		1812-1813		1811-1812		1810-1811		1809-1810		1808-1809		1807-1808		1806-1807		1805-1806		1804-1805		1803-1804		1802-1803		1801-1802		1800-1801		1799-1800		1798-1799		1797-1798		1796-1797		1795-1796		1794-1795	
-----------	--	-----------	--	-----------	--	-----------	--	-----------	--	-----------	--	-----------	--	-----------	--	-----------	--	-----------	--	-----------	--	-----------	--	-----------	--	-----------	--	-----------	--	-----------	--	-----------	--	-----------	--	-----------	--	-----------	--	-----------	--	-----------	--	-----------	--	-----------	--	-----------	--	-----------	--	-----------	--	-----------	--	-----------	--	-----------	--	-----------	--	-----------	--	-----------	--	-----------	--	-----------	--	-----------	--	-----------	--	-----------	--	-----------	--	-----------	--	-----------	--	-----------	--	-----------	--	-----------	--	-----------	--	-----------	--	-----------	--	-----------	--	-----------	--	-----------	--	-----------	--	-----------	--	-----------	--	-----------	--	-----------	--	-----------	--	-----------	--	-----------	--	-----------	--	-----------	--	-----------	--	-----------	--	-----------	--	-----------	--	-----------	--	-----------	--	-----------	--	-----------	--	-----------	--	-----------	--	-----------	--	-----------	--	-----------	--	-----------	--	-----------	--	-----------	--	-----------	--	-----------	--	-----------	--	-----------	--	-----------	--	-----------	--	-----------	--	-----------	--	-----------	--	-----------	--	-----------	--	-----------	--	-----------	--	-----------	--	-----------	--	-----------	--	-----------	--	-----------	--	-----------	--	-----------	--	-----------	--	-----------	--	-----------	--	-----------	--	-----------	--	-----------	--	-----------	--	-----------	--	-----------	--	-----------	--	-----------	--	-----------	--	-----------	--	-----------	--	-----------	--	-----------	--	-----------	--	-----------	--	-----------	--	-----------	--	-----------	--	-----------	--	-----------	--	-----------	--	-----------	--	-----------	--	-----------	--	-----------	--	-----------	--	-----------	--	-----------	--	-----------	--	-----------	--	-----------	--	-----------	--	-----------	--	-----------	--	-----------	--	-----------	--	-----------	--	-----------	--	-----------	--	-----------	--	-----------	--	-----------	--	-----------	--	-----------	--	-----------	--	-----------	--	-----------	--	-----------	--	-----------	--	-----------	--	-----------	--	-----------	--	-----------	--	-----------	--	-----------	--	-----------	--	-----------	--	-----------	--	-----------	--	-----------	--	-----------	--	-----------	--	-----------	--	-----------	--	-----------	--	-----------	--	-----------	--	-----------	--	-----------	--	-----------	--	-----------	--	-----------	--	-----------	--	-----------	--	-----------	--	-----------	--	-----------	--	-----------	--	-----------	--	-----------	--	-----------	--	-----------	--	-----------	--	-----------	--	-----------	--	-----------	--	-----------	--	-----------	--	-----------	--	-----------	--	-----------	--	-----------	--	-----------	--	-----------	--	-----------	--	-----------	--	-----------	--	-----------	--	-----------	--	-----------	--	-----------	--	-----------	--	-----------	--	-----------	--	-----------	--	-----------	--	-----------	--	-----------	--	-----------	--	-----------	--	-----------	--	-----------	--	-----------	--	-----------	--	-----------	--	-----------	--	-----------	--	-----------	--	-----------	--	-----------	--	-----------	--	-----------	--	-----------	--	-----------	--	-----------	--	-----------	--	-----------	--	-----------	--

## IMP 2 SIZING CALCULATION

[illegible][illegible]

### IMP 3 SIZING CALCULATION

## Method for Calculating the Contribution Margin and Volume Method

For the calculation of the contribution margin and the volume method, the following data are available:

1. Selling price per unit: 100,-
2. Variable costs per unit: 60,-
3. Fixed costs: 100.000,-
4. Selling quantity: 1000 units
5. Variable costs: 60.000,-
6. Fixed costs: 100.000,-
7. Contribution margin: 40.000,-
8. Contribution margin ratio: 40%

Cost Type	Cost
Variable Costs	60.000,-
Fixed Costs	100.000,-
Total Costs	160.000,-

Table 1: Cost Data

For the calculation of the contribution margin and the volume method, the following data are available:

1. Selling price per unit: 100,-
2. Variable costs per unit: 60,-
3. Fixed costs: 100.000,-
4. Selling quantity: 1000 units
5. Variable costs: 60.000,-
6. Fixed costs: 100.000,-
7. Contribution margin: 40.000,-
8. Contribution margin ratio: 40%

Cost Type	Cost
Variable Costs	60.000,-
Fixed Costs	100.000,-
Total Costs	160.000,-

1. Selling price per unit: 100,-
2. Variable costs per unit: 60,-
3. Fixed costs: 100.000,-
4. Selling quantity: 1000 units
5. Variable costs: 60.000,-
6. Fixed costs: 100.000,-
7. Contribution margin: 40.000,-
8. Contribution margin ratio: 40%

Cost Type	Cost
Variable Costs	60.000,-
Fixed Costs	100.000,-
Total Costs	160.000,-

1. Selling price per unit: 100,-
2. Variable costs per unit: 60,-
3. Fixed costs: 100.000,-
4. Selling quantity: 1000 units
5. Variable costs: 60.000,-
6. Fixed costs: 100.000,-
7. Contribution margin: 40.000,-
8. Contribution margin ratio: 40%

Cost Type	Cost
Variable Costs	60.000,-
Fixed Costs	100.000,-
Total Costs	160.000,-

Cost Type	Cost
Variable Costs	60.000,-
Fixed Costs	100.000,-
Total Costs	160.000,-

Cost Type	Cost
Variable Costs	60.000,-
Fixed Costs	100.000,-
Total Costs	160.000,-

Contribution Margin and Volume Method

1

Page 10/11

6.2) Specificity: list of 10 questions and answers	
1.0	Answer: an individual's genotype is the sum of the genetic material that he or she has inherited from his or her parents
2.0	Question: if you crossed two heterozygous individuals (Aa x Aa) for a trait, what is the probability that you would get an offspring that is homozygous dominant (AA)?
3.0	Answer: 1/4
4.0	Question: if you crossed two heterozygous individuals (Aa x Aa) for a trait, what is the probability that you would get an offspring that is heterozygous (Aa)?
5.0	Answer: 1/2
6.0	Question: if you crossed two heterozygous individuals (Aa x Aa) for a trait, what is the probability that you would get an offspring that is homozygous recessive (aa)?
7.0	Answer: 1/4
8.0	Question: if you crossed two heterozygous individuals (Aa x Aa) for a trait, what is the probability that you would get an offspring that is heterozygous (Aa)?
9.0	Answer: 1/2
10.0	Question: if you crossed two heterozygous individuals (Aa x Aa) for a trait, what is the probability that you would get an offspring that is homozygous dominant (AA)?
11.0	Answer: 1/4

ISSUED FOR BUILDING PERMIT  
APPROVAL ONLY. ENGINEERING DIVISION  
HAS NOT YET APPROVED THE PLANS.



1-800-227-3800

- LEGEND**
- PROJECT & CONSTRUCTION BOUNDARY
  - TEMPORARY FIBER ROLLS
  - STORM DRAIN INLET PROTECTION
  - STABILIZED CONSTRUCTION ENTRANCE
  - WM-4, CONCRETE WASHOUT AREA
  - CONSTRUCTION STAGING, MATERIALS STORAGE, AND VEHICLE/EQUIPMENT STORAGE, CLEANING, & MAINTENANCE AREA
  - RECYCLABLE MATERIALS STOCKPILE AREA
  - SAMPLING LOCATION OF RUNOFF ADJACENT TO MATERIAL AND WASTE STORAGE AREAS
  - SAMPLING LOCATION OF RUNOFF IN AN UNCONTAMINATED AREA TO BE USED AS A BASE SAMPLE FOR COMPARISON
  - WM-9, PORTABLE TOILETS

**ABBREVIATIONS**

- BMP BEST MANAGEMENT PRACTICE  
CASQA CALIFORNIA STORMWATER QUALITY ASSOCIATION  
EC EROSION CONTROL  
EC-1 EROSION CONTROL  
NS NON-STOREWATER  
O.C. ON CENTER  
PERM PERMANENT  
SE SEDIMENT CONTROL  
SS SOIL STABILIZATION  
SWPPP STORMWATER POLLUTION PREVENTION PLAN  
TC-1 TRACKING CONTROL  
TTP TEMPORARY  
WE WASTE MANAGEMENT  
WM WASTE MANAGEMENT

**SWPPP GENERAL NOTES:**

- BMPs APPLICABLE THROUGHOUT THE PROJECT LIMITS DURING CONSTRUCTION. EXACT LOCATION AND ORIENTATION OF BMPs CAN BE ADJUSTED BY THE CONTRACTORS TO FIT FIELD CONDITIONS.
- ALL TEMPORARY BMPs WILL BE IMPLEMENTED AS PER THE CITY ENGINEER'S DIRECTION.
- STAGING AREA FOR THIS PROJECT WILL BE LOCATED AS SHOWN ON THIS PLAN.
- THE INFORMATION ON THIS PLAN IS INTENDED TO BE USED AS A GUIDE FOR THE CONTRACTOR AND SUBCONTRACTORS TO INSTALL WATER POLLUTION CONTROL DEVICES AT GENERAL LOCATIONS THROUGHOUT THE SITE. THESE DRAWINGS ARE TO BE USED IN CONJUNCTION WITH THE NARRATIVE SECTION OF THE STORMWATER POLLUTION PREVENTION PLAN (SWPPP).
- FIELD AND WEATHER CONDITIONS MAY NECESSITATE MODIFICATIONS TO THESE DRAWINGS.
- THE CONTRACTOR IS ULTIMATELY RESPONSIBLE FOR PROTECTING THE STORMWATER FROM CONTAMINATION, WITH CONFORMING WITH THE CONSTRUCTION GENERAL PERMIT (CGP), AND EROSION CONTROL DEVICES AS NEEDED TO PROTECT THE STORMWATER.

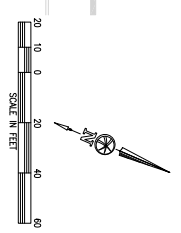
**TEMPORARY PROJECT BMPs**

BMP ID	BMP NAME	LOCATION
EC-1	SCHEDULING	ENTIRE PROJECT
EC-2	PREVENTION OF EXISTING VEGETATION	EXISTING LANDSCAPE AREAS
EC-3	HYDROSEEDING	EXPOSED SOILS
EC-4	STRAW MULCH	DEVELOPED SOIL
EC-5	EROSION CONTROL MATS	EXPOSED SOILS
EC-6	EARTH ANCHORS & DRAINAGE SWALES	AS SHOWN ON PLANS
SE-1	SILT FENCE	AT LOCATIONS SHOWN ON PLANS TO PREVENT RUNOFF
SE-2	SEDIMENT BASIN	AS SHOWN ON PLANS
SE-3	PRE-SETTLEMENT	AS SHOWN ON PLANS
SE-4	STORM DRAINLET PROTECTION	AT LOCATIONS SHOWN ON PLANS TO PREVENT RUNOFF
TC-1	CONSTRUCTION ENTRANCE	AS SHOWN ON PLANS
WE-1	WASTE MANAGEMENT	AS SHOWN ON PLANS
WM-1	WASTE MANAGEMENT	AS SHOWN ON PLANS
WM-2	WASTE MANAGEMENT	AS SHOWN ON PLANS
WM-3	WASTE MANAGEMENT	AS SHOWN ON PLANS
WM-4	CONCRETE WASHOUT AREA	AS SHOWN ON PLANS
WM-5	CONCRETE WASHOUT AREA	AS SHOWN ON PLANS
WM-6	CONCRETE WASHOUT AREA	AS SHOWN ON PLANS
WM-7	CONCRETE WASHOUT AREA	AS SHOWN ON PLANS
WM-8	CONCRETE WASHOUT AREA	AS SHOWN ON PLANS
WM-9	CONCRETE WASHOUT AREA	AS SHOWN ON PLANS
WM-10	CONCRETE WASHOUT AREA	AS SHOWN ON PLANS

**STORMWATER POLLUTION PREVENTION PLAN**

**STORM WATER POLLUTION PREVENTION CONSTRUCTION NOTES:**

- TC-1, CONSTRUCT TEMPORARY CONSTRUCTION ENTRANCE PER DETAIL ON SHEET 12.
- SE-1, CONSTRUCT STORM DRAINLET PROTECTION PER DETAIL ON SHEET 12.
- SE-2, CONSTRUCT STORM DRAINLET PROTECTION PER DETAIL ON SHEET 12.
- SE-3, CONSTRUCT STORM DRAINLET PROTECTION PER DETAIL ON SHEET 12.
- SE-4, CONSTRUCT STORM DRAINLET PROTECTION PER DETAIL ON SHEET 12.
- SE-5, CONSTRUCT STORM DRAINLET PROTECTION PER DETAIL ON SHEET 12.
- SE-6, CONSTRUCT STORM DRAINLET PROTECTION PER DETAIL ON SHEET 12.
- SE-7, CONSTRUCT STORM DRAINLET PROTECTION PER DETAIL ON SHEET 12.
- SE-8, CONSTRUCT STORM DRAINLET PROTECTION PER DETAIL ON SHEET 12.
- SE-9, CONSTRUCT STORM DRAINLET PROTECTION PER DETAIL ON SHEET 12.
- SE-10, CONSTRUCT STORM DRAINLET PROTECTION PER DETAIL ON SHEET 12.
- SE-11, CONSTRUCT STORM DRAINLET PROTECTION PER DETAIL ON SHEET 12.
- SE-12, CONSTRUCT STORM DRAINLET PROTECTION PER DETAIL ON SHEET 12.
- SE-13, CONSTRUCT STORM DRAINLET PROTECTION PER DETAIL ON SHEET 12.
- SE-14, CONSTRUCT STORM DRAINLET PROTECTION PER DETAIL ON SHEET 12.
- SE-15, CONSTRUCT STORM DRAINLET PROTECTION PER DETAIL ON SHEET 12.
- SE-16, CONSTRUCT STORM DRAINLET PROTECTION PER DETAIL ON SHEET 12.
- SE-17, CONSTRUCT STORM DRAINLET PROTECTION PER DETAIL ON SHEET 12.
- SE-18, CONSTRUCT STORM DRAINLET PROTECTION PER DETAIL ON SHEET 12.
- SE-19, CONSTRUCT STORM DRAINLET PROTECTION PER DETAIL ON SHEET 12.
- SE-20, CONSTRUCT STORM DRAINLET PROTECTION PER DETAIL ON SHEET 12.
- SE-21, CONSTRUCT STORM DRAINLET PROTECTION PER DETAIL ON SHEET 12.
- SE-22, CONSTRUCT STORM DRAINLET PROTECTION PER DETAIL ON SHEET 12.
- SE-23, CONSTRUCT STORM DRAINLET PROTECTION PER DETAIL ON SHEET 12.
- SE-24, CONSTRUCT STORM DRAINLET PROTECTION PER DETAIL ON SHEET 12.
- SE-25, CONSTRUCT STORM DRAINLET PROTECTION PER DETAIL ON SHEET 12.
- SE-26, CONSTRUCT STORM DRAINLET PROTECTION PER DETAIL ON SHEET 12.
- SE-27, CONSTRUCT STORM DRAINLET PROTECTION PER DETAIL ON SHEET 12.
- SE-28, CONSTRUCT STORM DRAINLET PROTECTION PER DETAIL ON SHEET 12.
- SE-29, CONSTRUCT STORM DRAINLET PROTECTION PER DETAIL ON SHEET 12.
- SE-30, CONSTRUCT STORM DRAINLET PROTECTION PER DETAIL ON SHEET 12.
- SE-31, CONSTRUCT STORM DRAINLET PROTECTION PER DETAIL ON SHEET 12.
- SE-32, CONSTRUCT STORM DRAINLET PROTECTION PER DETAIL ON SHEET 12.
- SE-33, CONSTRUCT STORM DRAINLET PROTECTION PER DETAIL ON SHEET 12.
- SE-34, CONSTRUCT STORM DRAINLET PROTECTION PER DETAIL ON SHEET 12.
- SE-35, CONSTRUCT STORM DRAINLET PROTECTION PER DETAIL ON SHEET 12.
- SE-36, CONSTRUCT STORM DRAINLET PROTECTION PER DETAIL ON SHEET 12.
- SE-37, CONSTRUCT STORM DRAINLET PROTECTION PER DETAIL ON SHEET 12.
- SE-38, CONSTRUCT STORM DRAINLET PROTECTION PER DETAIL ON SHEET 12.
- SE-39, CONSTRUCT STORM DRAINLET PROTECTION PER DETAIL ON SHEET 12.
- SE-40, CONSTRUCT STORM DRAINLET PROTECTION PER DETAIL ON SHEET 12.
- SE-41, CONSTRUCT STORM DRAINLET PROTECTION PER DETAIL ON SHEET 12.
- SE-42, CONSTRUCT STORM DRAINLET PROTECTION PER DETAIL ON SHEET 12.
- SE-43, CONSTRUCT STORM DRAINLET PROTECTION PER DETAIL ON SHEET 12.
- SE-44, CONSTRUCT STORM DRAINLET PROTECTION PER DETAIL ON SHEET 12.
- SE-45, CONSTRUCT STORM DRAINLET PROTECTION PER DETAIL ON SHEET 12.
- SE-46, CONSTRUCT STORM DRAINLET PROTECTION PER DETAIL ON SHEET 12.
- SE-47, CONSTRUCT STORM DRAINLET PROTECTION PER DETAIL ON SHEET 12.
- SE-48, CONSTRUCT STORM DRAINLET PROTECTION PER DETAIL ON SHEET 12.
- SE-49, CONSTRUCT STORM DRAINLET PROTECTION PER DETAIL ON SHEET 12.
- SE-50, CONSTRUCT STORM DRAINLET PROTECTION PER DETAIL ON SHEET 12.
- SE-51, CONSTRUCT STORM DRAINLET PROTECTION PER DETAIL ON SHEET 12.
- SE-52, CONSTRUCT STORM DRAINLET PROTECTION PER DETAIL ON SHEET 12.
- SE-53, CONSTRUCT STORM DRAINLET PROTECTION PER DETAIL ON SHEET 12.
- SE-54, CONSTRUCT STORM DRAINLET PROTECTION PER DETAIL ON SHEET 12.
- SE-55, CONSTRUCT STORM DRAINLET PROTECTION PER DETAIL ON SHEET 12.
- SE-56, CONSTRUCT STORM DRAINLET PROTECTION PER DETAIL ON SHEET 12.
- SE-57, CONSTRUCT STORM DRAINLET PROTECTION PER DETAIL ON SHEET 12.
- SE-58, CONSTRUCT STORM DRAINLET PROTECTION PER DETAIL ON SHEET 12.
- SE-59, CONSTRUCT STORM DRAINLET PROTECTION PER DETAIL ON SHEET 12.
- SE-60, CONSTRUCT STORM DRAINLET PROTECTION PER DETAIL ON SHEET 12.
- SE-61, CONSTRUCT STORM DRAINLET PROTECTION PER DETAIL ON SHEET 12.
- SE-62, CONSTRUCT STORM DRAINLET PROTECTION PER DETAIL ON SHEET 12.
- SE-63, CONSTRUCT STORM DRAINLET PROTECTION PER DETAIL ON SHEET 12.
- SE-64, CONSTRUCT STORM DRAINLET PROTECTION PER DETAIL ON SHEET 12.
- SE-65, CONSTRUCT STORM DRAINLET PROTECTION PER DETAIL ON SHEET 12.
- SE-66, CONSTRUCT STORM DRAINLET PROTECTION PER DETAIL ON SHEET 12.
- SE-67, CONSTRUCT STORM DRAINLET PROTECTION PER DETAIL ON SHEET 12.
- SE-68, CONSTRUCT STORM DRAINLET PROTECTION PER DETAIL ON SHEET 12.
- SE-69, CONSTRUCT STORM DRAINLET PROTECTION PER DETAIL ON SHEET 12.
- SE-70, CONSTRUCT STORM DRAINLET PROTECTION PER DETAIL ON SHEET 12.
- SE-71, CONSTRUCT STORM DRAINLET PROTECTION PER DETAIL ON SHEET 12.
- SE-72, CONSTRUCT STORM DRAINLET PROTECTION PER DETAIL ON SHEET 12.
- SE-73, CONSTRUCT STORM DRAINLET PROTECTION PER DETAIL ON SHEET 12.
- SE-74, CONSTRUCT STORM DRAINLET PROTECTION PER DETAIL ON SHEET 12.
- SE-75, CONSTRUCT STORM DRAINLET PROTECTION PER DETAIL ON SHEET 12.
- SE-76, CONSTRUCT STORM DRAINLET PROTECTION PER DETAIL ON SHEET 12.
- SE-77, CONSTRUCT STORM DRAINLET PROTECTION PER DETAIL ON SHEET 12.
- SE-78, CONSTRUCT STORM DRAINLET PROTECTION PER DETAIL ON SHEET 12.
- SE-79, CONSTRUCT STORM DRAINLET PROTECTION PER DETAIL ON SHEET 12.
- SE-80, CONSTRUCT STORM DRAINLET PROTECTION PER DETAIL ON SHEET 12.
- SE-81, CONSTRUCT STORM DRAINLET PROTECTION PER DETAIL ON SHEET 12.
- SE-82, CONSTRUCT STORM DRAINLET PROTECTION PER DETAIL ON SHEET 12.
- SE-83, CONSTRUCT STORM DRAINLET PROTECTION PER DETAIL ON SHEET 12.
- SE-84, CONSTRUCT STORM DRAINLET PROTECTION PER DETAIL ON SHEET 12.
- SE-85, CONSTRUCT STORM DRAINLET PROTECTION PER DETAIL ON SHEET 12.
- SE-86, CONSTRUCT STORM DRAINLET PROTECTION PER DETAIL ON SHEET 12.
- SE-87, CONSTRUCT STORM DRAINLET PROTECTION PER DETAIL ON SHEET 12.
- SE-88, CONSTRUCT STORM DRAINLET PROTECTION PER DETAIL ON SHEET 12.
- SE-89, CONSTRUCT STORM DRAINLET PROTECTION PER DETAIL ON SHEET 12.
- SE-90, CONSTRUCT STORM DRAINLET PROTECTION PER DETAIL ON SHEET 12.
- SE-91, CONSTRUCT STORM DRAINLET PROTECTION PER DETAIL ON SHEET 12.
- SE-92, CONSTRUCT STORM DRAINLET PROTECTION PER DETAIL ON SHEET 12.
- SE-93, CONSTRUCT STORM DRAINLET PROTECTION PER DETAIL ON SHEET 12.
- SE-94, CONSTRUCT STORM DRAINLET PROTECTION PER DETAIL ON SHEET 12.
- SE-95, CONSTRUCT STORM DRAINLET PROTECTION PER DETAIL ON SHEET 12.
- SE-96, CONSTRUCT STORM DRAINLET PROTECTION PER DETAIL ON SHEET 12.
- SE-97, CONSTRUCT STORM DRAINLET PROTECTION PER DETAIL ON SHEET 12.
- SE-98, CONSTRUCT STORM DRAINLET PROTECTION PER DETAIL ON SHEET 12.
- SE-99, CONSTRUCT STORM DRAINLET PROTECTION PER DETAIL ON SHEET 12.
- SE-100, CONSTRUCT STORM DRAINLET PROTECTION PER DETAIL ON SHEET 12.



ISSUED FOR BUILDING PERMIT  
APPROVAL ONLY. ENGINEERING DIVISION  
HAS NOT YET APPROVED THE PLANS.



Bellecci & Associates, Inc.  
Civil Engineering • Land Surveying  
2250 Diamond Boulevard, Suite 100 Concord, CA 94520  
Phone (925) 685-4669 Fax (925) 685-4668

THE INCLUDED DRAWINGS, SPECIFICATIONS, IDEAS, DESIGNS & ARRANGEMENTS REPRESENTED THEREBY ARE AND SHALL REMAIN THE PROPERTY OF ARRI STUDIO ARCHITECTS AND NO PART THEREOF SHALL BE COPIED, DISCLOSED TO OTHERS OR USED IN CONNECTION WITH ANY WORK OR PROJECT OTHER THAN THE SPECIFIC PROJECT FOR WHICH THEY HAVE BEEN PREPARED AND DEVELOPED WITHOUT THE WRITTEN CONSENT OF ARRI STUDIO ARCHITECTS. VISUAL CONTACT WITH THESE DRAWINGS OR SPECIFICATIONS SHALL CONSTITUTE CONCLUSIVE EVIDENCE OF ACCEPTANCE OF THESE RESTRICTIONS. SUBMITTAL OF THESE DOCUMENTS FOR PUBLIC AGENCY REVIEW SHALL NOT BE CONSIDERED A WAIVER OF ARRI STUDIO ARCHITECTS' RIGHTS. ARRI STUDIO ARCHITECTS COPYRIGHT 2008-2017

PROJECT

**GATEWAY HOTEL**

550 GATEWAY BOULEVARD  
SOUTH SAN FRANCISCO, CA

**EROSION  
CONTROL-PHASE 1**

CLIENT

**SRI KRISHNA ENTERPRISE**

300 GATEWAY BOULEVARD  
SOUTH SAN FRANCISCO, CA 94080

DATE

**1/14/14**

**JANUARY 15, 2017**

BY

**C10 OF C16**

ARITIS

STUDIO ARCHITECTS

1000 COMMON AVENUE  
SAN LEITE, CA 94060  
94067-2200  
PHONE (415) 435-1234  
WWW.ARITISSTUDIO.COM

SEAL

Professional Engineer  
No. 10101  
State of California  
Exp. 12/31/2017



1-800-277-8800

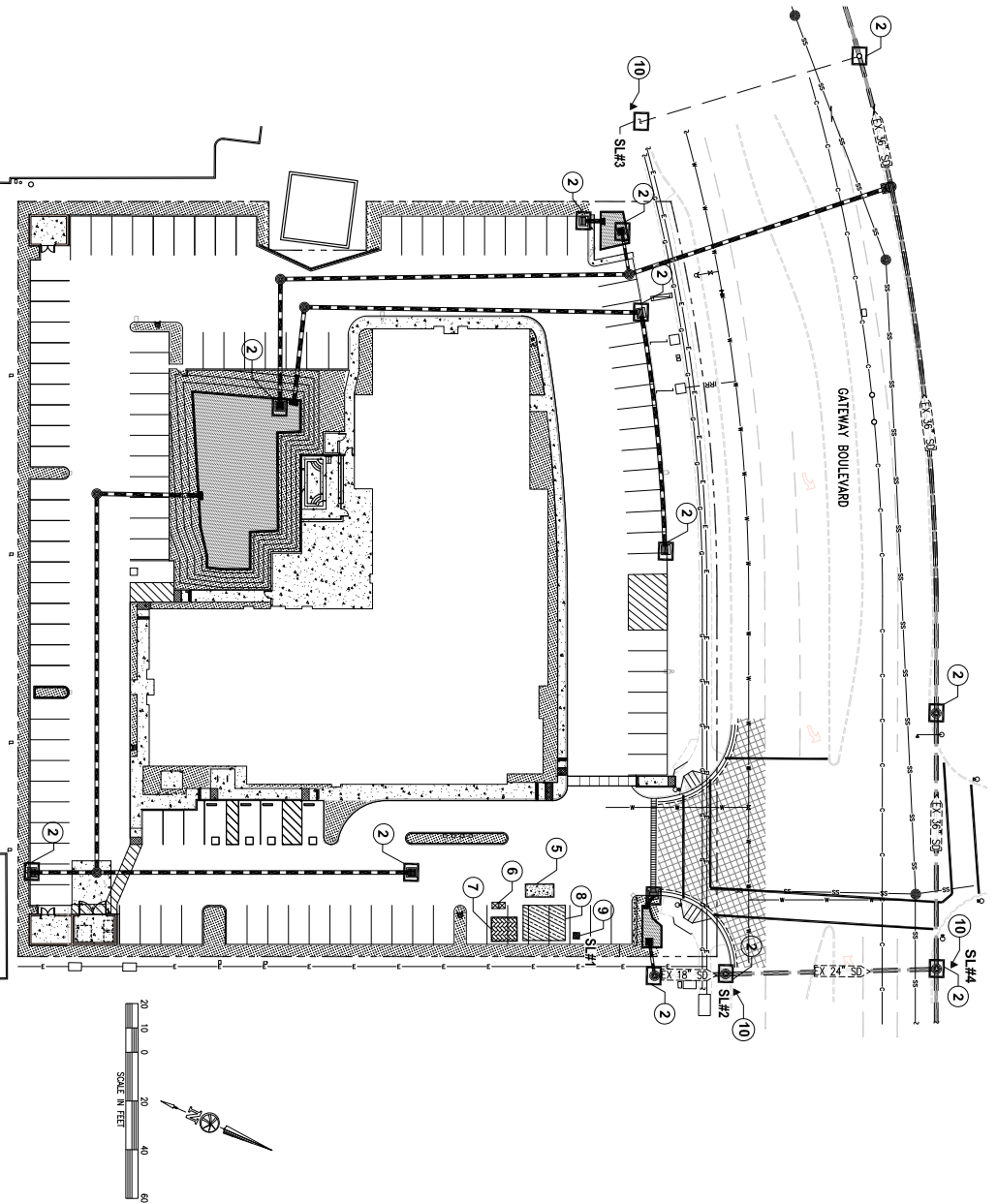
- LEGEND**
- PROJECT & CONSTRUCTION BOUNDARY
  - STORM DRAIN INLET PROTECTION
  - STABILIZED CONSTRUCTION ENTRANCE
  - WM-4, CONCRETE WASHOUT AREA
  - CONSTRUCTION STAGING, MATERIALS STORAGE, AND VEHICLE EQUIPMENT STORAGE, CLEANING, & MAINTENANCE AREA
  - RECYCLABLE MATERIALS STOCKPILE AREA
  - SAMPLING LOCATION OF RUNOFF ADJACENT TO MATERIAL AND WASTE STORAGE AREAS
  - SAMPLING LOCATION OF RUNOFF IN AN UNCONTAMINATED AREA TO BE USED AS A BASE SAMPLE FOR CDR ARRS-03
  - WM-3, PORTABLE TOILETS

**ABBREVIATIONS**

- BMP BEST MANAGEMENT PRACTICE  
CASQA CALIFORNIA STORMWATER QUALITY ASSOCIATION  
EC EROSION CONTROL  
EC-1 EROSION CONTROL  
EC-2 EROSION CONTROL  
EC-3 EROSION CONTROL  
NS NUTRIENT MANAGEMENT  
O.C. ON CENTER  
PERM PERMANENT  
SE SEDIMENT CONTROL  
SS SOIL STABILIZATION  
SWPPP STORMWATER POLLUTION PREVENTION PLAN  
TC TEMPORARY CONSTRUCTION  
TM TRAIL MARKER  
WE WIND EROSION  
WM WASTE MANAGEMENT

**SWPPP GENERAL NOTES:**

- BMPs APPLICABLE THROUGHOUT THE PROJECT LIMITS DURING CONSTRUCTION. EXACT LOCATION AND ORIENTATION OF BMPs CAN BE ADJUSTED BY THE CONTRACTORS TO FIT FIELD CONDITIONS.
- ALL TEMPORARY BMPs WILL BE IMPLEMENTED AS PER THE CITY ENGINEER'S DIRECTION.
- STAGING AREA FOR THIS PROJECT WILL BE LOCATED AS SHOWN ON THIS PLAN.
- THE INFORMATION ON THIS PLAN IS INTENDED TO BE USED AS A GUIDE FOR THE CONTRACTOR AND SUBCONTRACTORS TO INSTALL WATER POLLUTION CONTROL DEVICES AT GENERAL LOCATIONS THROUGHOUT THE SITE. THESE DRAWINGS ARE TO BE USED IN CONJUNCTION WITH THE NARRATIVE SECTION OF THE STORMWATER POLLUTION PREVENTION PLAN (SWPPP).
- FIELD AND WEATHER CONDITIONS MAY NECESSITATE MODIFICATIONS TO THESE DRAWINGS.



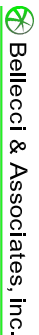
STORMWATER POLLUTION PREVENTION PLAN

SCALE: 1"=40'

**STORM WATER POLLUTION PREVENTION CONSTRUCTION NOTES:**

1. CONSTRUCT TEMPORARY CONSTRUCTION ENTRANCE PER DETAIL ON SHEET 12.
2. SE-10, CONSTRUCT STORM DRAIN INLET PROTECT PER DETAIL ON SHEET 12.
3. SE-4, CONSTRUCT FIBER ROLLS PER DETAIL ON SHEET 12.
4. INSTALL TEMPORARY SLUT FENCE PER DETAIL ON SHEET 12.
5. WM-4, CONCRETE WASHOUT AREA PER DETAIL ON SHEET 12.
6. WM-3, PORTABLE TOILETS.
7. RECYCLABLE MATERIALS STOCKPILE AREA.
8. CONSTRUCTION STAGING, MATERIALS STORAGE, AND VEHICLE EQUIPMENT STORAGE, CLEANING, & MAINTENANCE.
9. SAMPLING LOCATION OF RUNOFF FROM PLANNED MATERIAL AND WASTE STORAGE AREAS AND AREAS WHERE NON-VISIBLE POLLUTANT PRODUCING CONSTRUCTION ACTIVITIES ARE PERFORMED.
10. SAMPLING LOCATION OF UNCONTAMINATED SOURCE OF RUNOFF AS A BACKGROUND SAMPLE FOR COMPARISON WITH THE SWPPP BMP AREAS FOR NON-VISIBLE POLLUTANTS.

ISSUED FOR BUILDING PERMIT  
APPROVAL ONLY. ENGINEERING DIVISION  
HAS NOT YET APPROVED THE PLANS.



Bellecci & Associates, Inc.  
Civil Engineering • Land Surveying  
2250 Diamond Boulevard, Suite 100 Concord, CA 94520  
Phone (925) 685-4669 Fax (925) 685-4668

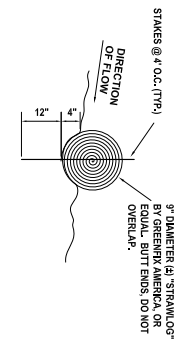
1000 CONCORD AVENUE  
SAN LEITE (CA 94520)  
925.677.2200  
WWW.ARTIS-ARCHITECTS.COM  
ARTIS ARCHITECTS



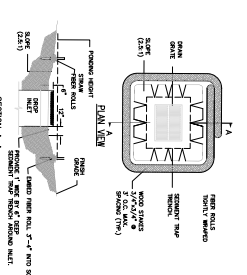
SRI KRISHNA ENTERPRISE  
300 GATEWAY BOULEVARD  
SOUTH SAN FRANCISCO, CA 94080

GATEWAY HOTEL  
550 GATEWAY BOULEVARD  
SOUTH SAN FRANCISCO, CA  
EROSION  
CONTROL-PHASE 2

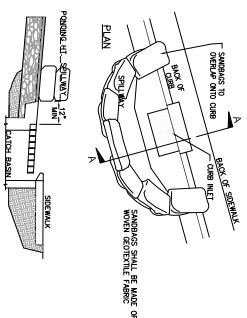
NO.	REVISION	DATE
1	11/14	
2	JANUARY 15, 2017	
C11 OF C16		



SE-5 TEMPORARY FIBER ROLL  
NOT TO SCALE



DROP INLET FIBER ROLL SEDIMENT BARRIER - ALL INLETS (TYP)  
NOT TO SCALE

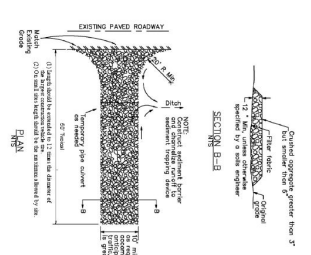


CURB INLET SEDIMENT BARRIER  
NOT TO SCALE

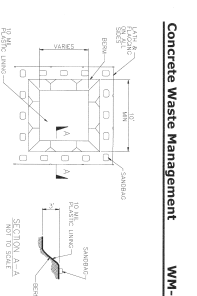
DROP INLET PROTECTION

SE-10 TEMPORARY DRAIN INLET PROTECTION  
NOT TO SCALE

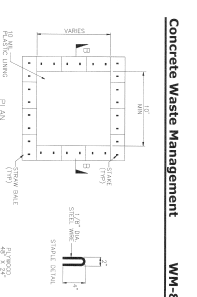
CURB INLET PROTECTION



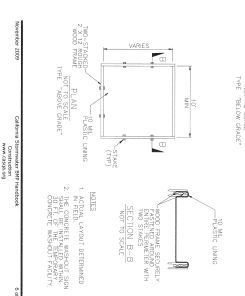
Stabilized Construction Entrance/Exit TC-1  
NOT TO SCALE



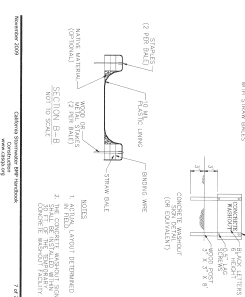
Concrete Waste Management WM-8  
NOT TO SCALE



Concrete Waste Management WM-8  
NOT TO SCALE

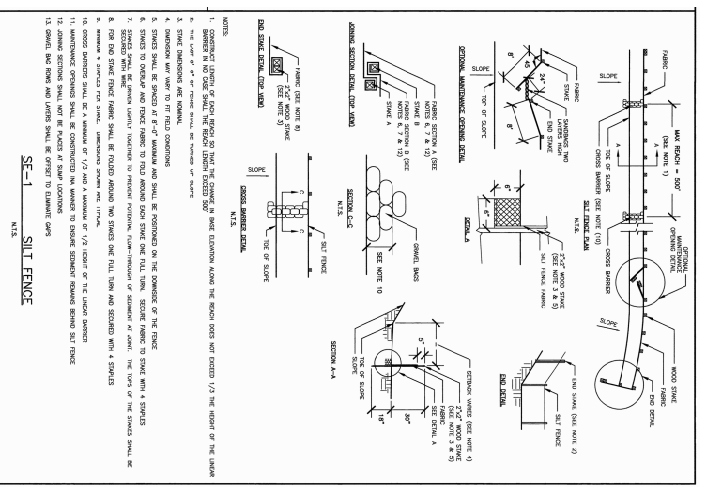


Concrete Waste Management WM-8  
NOT TO SCALE



Concrete Waste Management WM-8  
NOT TO SCALE

WM-8 CONCRETE WASHOUT  
NOT TO SCALE



SEAL SILT FENCE  
NOT TO SCALE

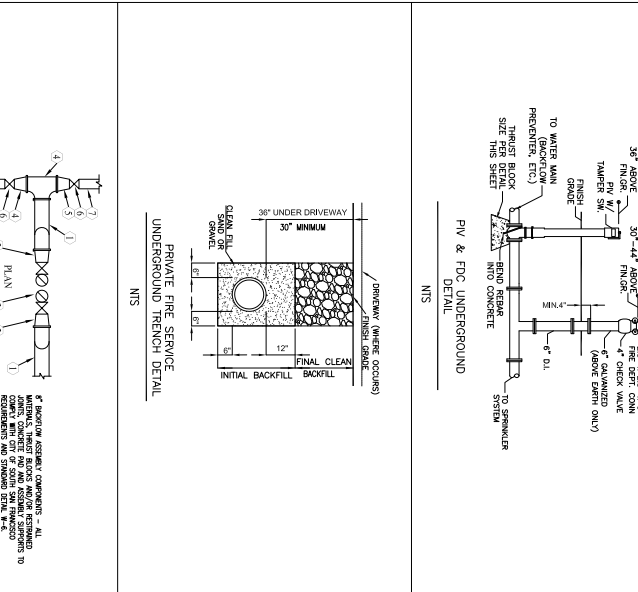
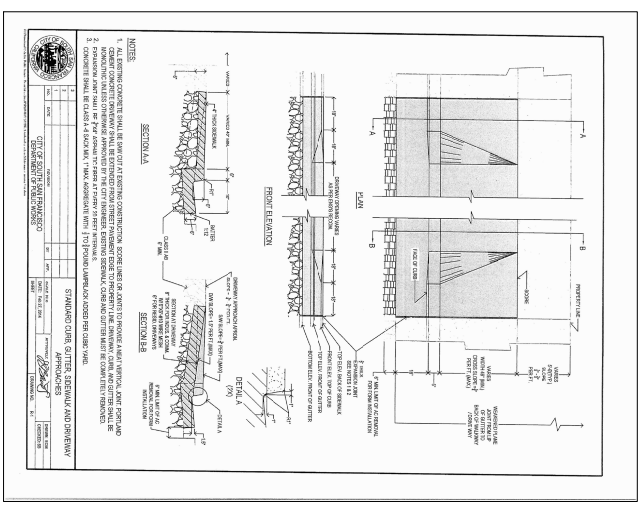
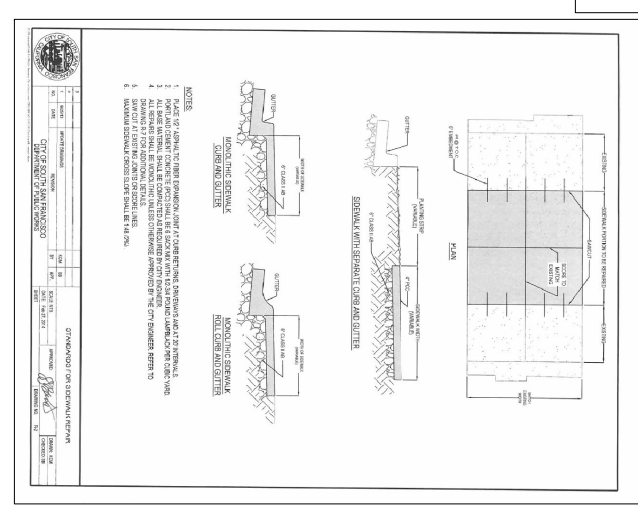
ISSUED FOR BUILDING PERMIT  
APPROVAL ONLY. ENGINEERING DIVISION  
HAS NOT YET APPROVED THE PLANS.

Bellecci & Associates, Inc.  
Civil Engineering • Land Surveying  
2250 Diamond Boulevard, Suite 100 Concord, CA 94520  
Phone (925) 685-4869 Fax (925) 685-4868

THE INCLUDED DRAWINGS, SPECIFICATIONS, IDEAS, DESIGNS & ARRANGEMENTS REPRESENTED THEREBY ARE AND SHALL REMAIN THE PROPERTY OF ARBIS STUDIO ARCHITECTS AND NO PART THEREOF SHALL BE COPIED, DISCLOSED TO OTHERS OR USED IN CONNECTION WITH ANY WORK OR PROJECT OTHER THAN THE SPECIFIC PROJECT FOR WHICH THEY HAVE BEEN PREPARED AND DEVELOPED WITHOUT THE WRITTEN CONSENT OF ARBIS STUDIO ARCHITECTS. VERBAL CONTACT WITH THESE DRAWINGS OR SPECIFICATIONS SHALL CONSTITUTE CONCLUSIVE EVIDENCE OF ACCEPTANCE OF THESE RESTRICTIONS. SUBMITTAL OF THESE DOCUMENTS FOR PUBLIC AGENCY REVIEW SHALL NOT BE CONSIDERED A WAIVER OF ARBIS STUDIO ARCHITECTS' RIGHTS. ARBIS STUDIO ARCHITECTS COPYRIGHT 2008-2017

<b>GATEWAY HOTEL</b> 550 GATEWAY BOULEVARD SOUTH SAN FRANCISCO, CA <b>EROSION CONTROL-DETAILS</b>		<b>SRI KRISHNA ENTERPRISE</b> 300 GATEWAY BOULEVARD SOUTH SAN FRANCISCO, CA 94080		<b>ARFIS</b> STUDIO ARCHITECTS 1500 CONCORD AVENUE SAN LUIS OBISPO, CA 95070 805.677.2200 805.677.2201 WWW.ARFISSTUDIO.COM PROJECT NO. 15-0001-0001		<b>ARFIS</b> STUDIO ARCHITECTS 1500 CONCORD AVENUE SAN LUIS OBISPO, CA 95070 805.677.2200 805.677.2201 WWW.ARFISSTUDIO.COM PROJECT NO. 15-0001-0001				
NO.	REVISION	DATE								
1										
2										
3										
4										
5										
6										
7										
8										
9										
10										
11										
12										
13										
14										
15										
16										
17										
18										
19										
20										
21										
22										
23										
24										
25										
26										
27										
28										
29										
30										
31										
32										
33										
34										
35										
36										
37										
38										
39										
40										
41										
42										
43										
44										
45										
46										
47										
48										
49										
50										
51										
52										
53										
54										
55										
56										
57										
58										
59										
60										
61										
62										
63										
64										
65										
66										
67										
68										
69										
70										
71										
72										
73										
74										
75										
76										
77										
78										
79										
80										
81										
82										
83										
84										
85										
86										
87										
88										
89										
90										
91										
92										
93										
94										
95										
96										
97										
98										
99										
100										



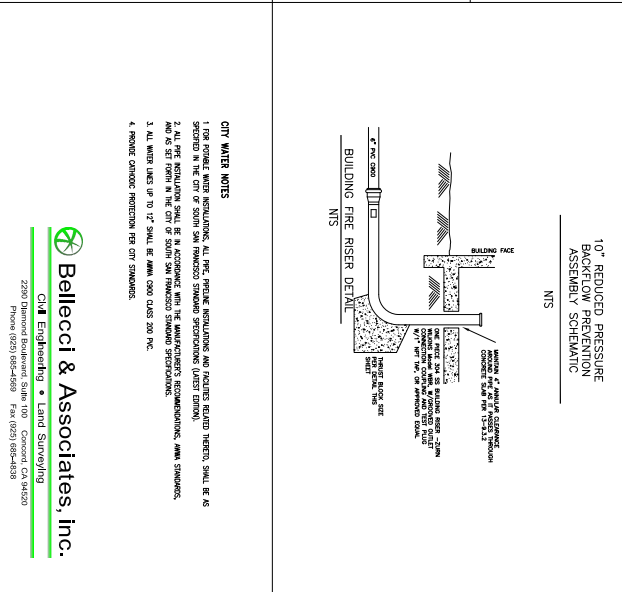
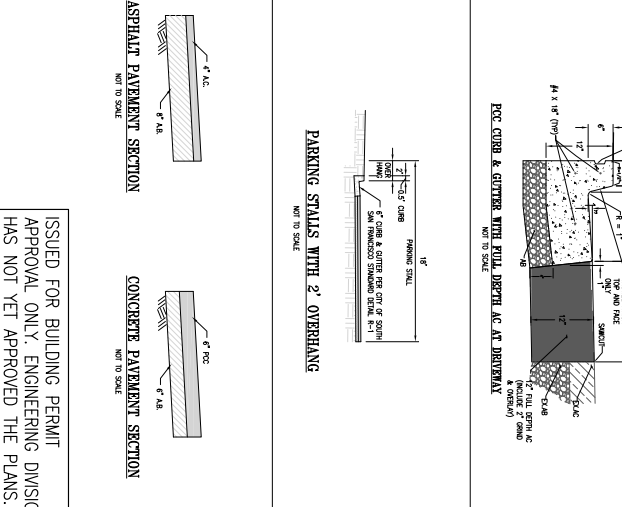
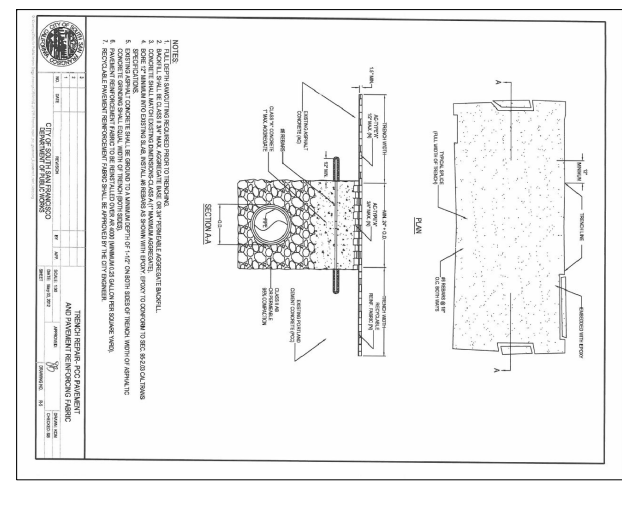


**STUDIO ARCHITECTS**

1000 COMMON AVENUE  
SAN LUIS OBISPO, CA 95070  
805.377.2200  
STUDIO ARCHITECTS

**STUDIO ARCHITECTS**

1000 COMMON AVENUE  
SAN LUIS OBISPO, CA 95070  
805.377.2200  
STUDIO ARCHITECTS



**STUDIO ARCHITECTS**

1000 COMMON AVENUE  
SAN LUIS OBISPO, CA 95070  
805.377.2200  
STUDIO ARCHITECTS

**STUDIO ARCHITECTS**

1000 COMMON AVENUE  
SAN LUIS OBISPO, CA 95070  
805.377.2200  
STUDIO ARCHITECTS

THE INCLUDED DRAWINGS, SPECIFICATIONS, IDEAS, DESIGNS & ARRANGEMENTS REPRESENTED THEREBY ARE AND SHALL REMAIN THE PROPERTY OF ARRI STUDIO ARCHITECTS AND NO PART THEREOF SHALL BE COPIED, DISCLOSED TO OTHERS OR USED IN CONNECTION WITH ANY WORK OR PROJECT OTHER THAN THE SPECIFIC PROJECT FOR WHICH THEY HAVE BEEN PREPARED AND DEVELOPED WITHOUT THE WRITTEN CONSENT OF ARRI STUDIO ARCHITECTS. VERBAL CONTACT WITH THESE DRAWINGS OR SPECIFICATIONS SHALL CONSTITUTE CONCLUSIVE EVIDENCE OF ACCEPTANCE OF THESE RESTRICTIONS. SUBMITTAL OF THESE DOCUMENTS FOR PUBLIC AGENCY REVIEW SHALL NOT BE CONSIDERED A WAIVER OF ARRI STUDIO ARCHITECTS' RIGHTS. ARRI STUDIO ARCHITECTS COPYRIGHT 2008-2017

**STUDIO ARCHITECTS**

1000 COMMON AVENUE  
SAN LUIS OBISPO, CA 95070  
805.377.2200  
STUDIO ARCHITECTS

**STUDIO ARCHITECTS**

1000 COMMON AVENUE  
SAN LUIS OBISPO, CA 95070  
805.377.2200  
STUDIO ARCHITECTS



EXISTING HYDROLOGY SUMMARY				
DATE	REVIEW	TIME OF CONCENTRATION (MIN)	RAINFALL INTENSITY (IN/HR - 10 YRS)	AREA (ACRES)
08-11	0.38	20	1.33	2.80

COMPOSITE C RAINFALL CALCULATION  
 $C_{mp} = 0.38$   
 $C_{mp} = \frac{C_1 A_1 + C_2 A_2}{A_1 + A_2}$   
 $C_{mp} = \frac{(0.38 \times 0.89) + (0.35 \times 1.91)}{0.89 + 1.91}$   
 $C_{mp} = 0.38$

ARE SAN FRANCISCO NO 33 LLC

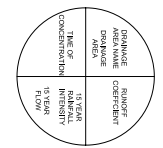
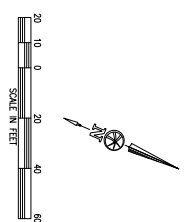
ARE SAN FRANCISCO NO 33 LLC

PARCEL "B" 60 PM 66-67

GATEWAY BOULEVARD

ISSUED FOR BUILDING PERMIT  
APPROVAL ONLY. ENGINEERING DIVISION  
HAS NOT YET APPROVED THE PLANS.

**Bellecci & Associates, Inc.**  
Civil Engineering • Land Surveying  
2250 Diamond Boulevard, Suite 100 Concord, CA 94520  
Phone (925) 665-4669 Fax (925) 665-4688



LEGEND  
--- DRAINAGE BOUNDARY  
--- TIME OF CONCENTRATION  
--- TIME OF RAINFALL FLOW

THE INCLUDED DRAWINGS, SPECIFICATIONS, IDEAS, DESIGNS & ARRANGEMENTS REPRESENTED THEREBY ARE AND SHALL REMAIN THE PROPERTY OF ARRIIS STUDIO ARCHITECTS AND NO PART THEREOF SHALL BE COPIED, DISCLOSED TO OTHERS OR USED IN CONNECTION WITH ANY WORK OR PROJECT OTHER THAN THE SPECIFIC PROJECT FOR WHICH THEY HAVE BEEN PREPARED AND DEVELOPED WITHOUT THE WRITTEN CONSENT OF ARRIIS STUDIO ARCHITECTS. VERBAL CONTACT WITH THESE DRAWINGS OR SPECIFICATIONS SHALL CONSTITUTE CONCLUSIVE EVIDENCE OF ACCEPTANCE OF THESE RESTRICTIONS. SUBMITTAL OF THESE DOCUMENTS FOR PUBLIC AGENCY REVIEW SHALL NOT BE CONSIDERED A WAIVER OF ARRIIS STUDIO ARCHITECTS' RIGHTS. ARRIIS STUDIO ARCHITECTS COPYRIGHT 2008-2017

<p>PROJECT</p> <p><b>GATEWAY HOTEL</b></p> <p>550 GATEWAY BOULEVARD SOUTH SAN FRANCISCO, CA</p> <p><b>EXISTING CONDITIONS HYDROLOGY</b></p>	<p>CURT</p> <p><b>SRI KRISHNA ENTERPRISE</b></p> <p>300 GATEWAY BOULEVARD SOUTH SAN FRANCISCO, CA 94080</p>	<p>STAMP</p>	<p>STAMP</p>
---	---	--------------	--------------

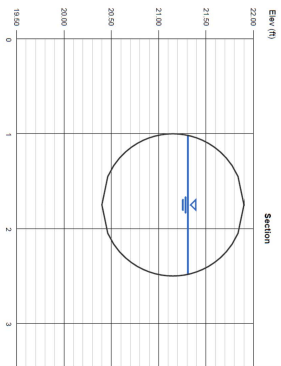


### Channel Report

Prepared by Aris Studio Architects, Inc. for Gateway Hotel, LLC  
Thursdays, Jan 12, 2017

#### PROPOSED 18 INCH SD @ 0.40 YEARS FLOW

Highlighted	Highlighted
Channel (ft)	= 1.50
C (ft)	= 0.87
Area (ft <sup>2</sup> )	= 3.50
Wetted Perim (ft)	= 1.13
Slope (%)	= 0.30
Hydraulic Radius (ft)	= 0.013
Velocity (ft/s)	= 0.28
Flow (cfs)	= 0.95
Flow (gpm)	= 1.10
Flow (m <sup>3</sup> /s)	= 0.032

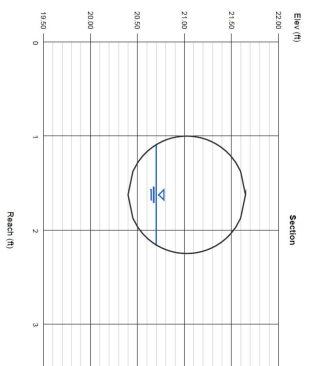


### Channel Report

Prepared by Aris Studio Architects, Inc. for Gateway Hotel, LLC  
Thursdays, Jan 12, 2017

#### 15 INCH SD PIPE @ DRAINAGE AREA DA 2

Highlighted	Highlighted
Channel (ft)	= 1.25
C (ft)	= 0.80
Area (ft <sup>2</sup> )	= 3.00
Wetted Perim (ft)	= 1.00
Slope (%)	= 0.30
Hydraulic Radius (ft)	= 0.013
Velocity (ft/s)	= 0.28
Flow (cfs)	= 0.95
Flow (gpm)	= 1.10
Flow (m <sup>3</sup> /s)	= 0.032

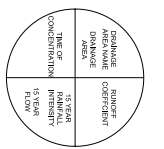


ARE SAN FRANCISCO NO 33 LLC

ARE SAN FRANCISCO NO 33 LLC

PARCEL "B" 60 PM 66-67

### LEGEND



CONCRETE & PAVEMENT CALCULATION  
 $C_{pav} = (0.1 \times 0.3) \times (1.57 \times 0.85)$   
 $C_{pav} = 0.08$

### PROPOSED HYDROLOGY SUMMARY

DRAINAGE NAME	AREA (AC)	TIME OF TRAVEL (MIN)	ANNUAL RAINFALL INTENSITY (IN/HR - 10 YEAR)	ADJUSTED RAINFALL INTENSITY (IN/HR)	Q (CFS)	Q (MGD)
DA-1	0.08	10	1.93	0.21	0.15	0.15
DA-2	0.08	10	1.93	0.21	0.15	0.15
DA-3	0.08	10	1.93	0.21	0.15	0.15
DA-4	0.08	10	1.93	0.21	0.15	0.15
DA-5	0.08	10	1.93	0.21	0.15	0.15
DA-6	0.08	10	1.93	0.21	0.15	0.15
DA-7	0.08	10	1.93	0.21	0.15	0.15

**Bellecci & Associates, Inc.**  
Civil Engineering • Land Surveying  
2250 Diamond Boulevard, Suite 100 Concord, CA 94520  
Phone (925) 685-4669 Fax (925) 685-4668

THE INCLUDED DRAWINGS, SPECIFICATIONS, IDEAS, DESIGNS & ARRANGEMENTS REPRESENTED THEREBY ARE AND SHALL REMAIN THE PROPERTY OF ARIS STUDIO ARCHITECTS AND NO PART THEREOF SHALL BE COPIED, DISCLOSED TO OTHERS OR USED IN CONNECTION WITH ANY WORK OR PROJECT OTHER THAN THE SPECIFIC PROJECT FOR WHICH THEY HAVE BEEN PREPARED AND DEVELOPED WITHOUT THE WRITTEN CONSENT OF ARIS STUDIO ARCHITECTS. VERBAL CONTACT WITH THESE DRAWINGS OR SPECIFICATIONS SHALL CONSTITUTE CONCLUSIVE EVIDENCE OF ACCEPTANCE OF THESE RESTRICTIONS. SUBMITTAL OF THESE DOCUMENTS FOR PUBLIC AGENCY REVIEW SHALL NOT BE CONSIDERED A WAIVER OF ARIS STUDIO ARCHITECTS' RIGHTS. ARIS STUDIO ARCHITECTS COPYRIGHT 2008-2017.

PROJECT

**GATEWAY HOTEL**

550 GATEWAY BOULEVARD  
SOUTH SAN FRANCISCO, CA

**PROPOSED CONDITIONS  
HYDROLOGY**

CLIENT

**SRI KRISHNA ENTERPRISE**

300 GATEWAY BOULEVARD  
SOUTH SAN FRANCISCO, CA 94080

DATE

1/14/14

JANUARY 15, 2017

C15 OF C16

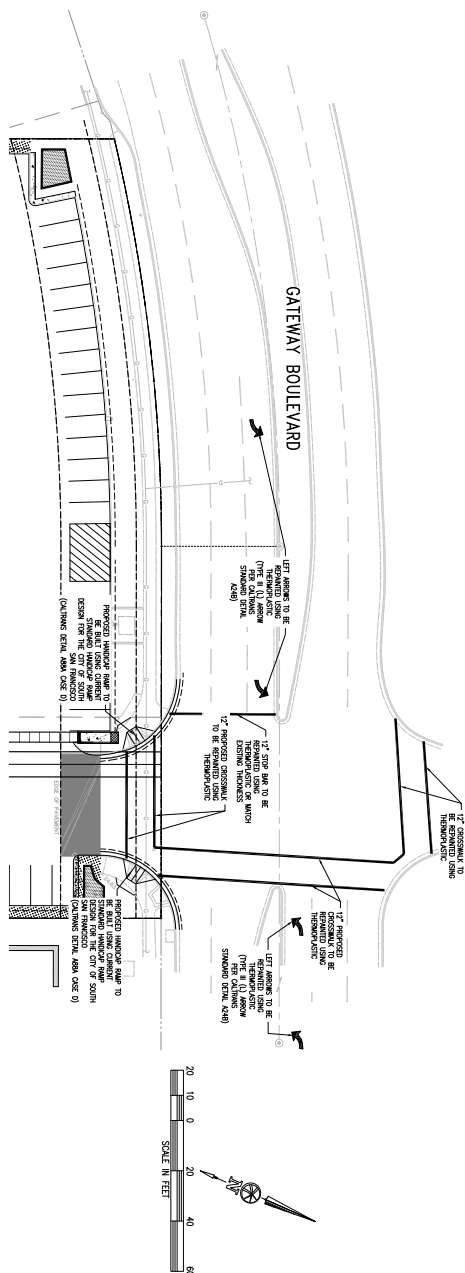
STUDIO ARCHITECTS

300 COMMON AVENUE  
SAN LUIS OBISPO, CA 95070  
805.772.0200  
WWW.ARISSTUDIOARCHITECTS.COM

SEAL OF THE PROFESSIONAL ENGINEER

ARIS STUDIO ARCHITECTS, INC.

1110

[illegible]

2290 Diamond Boulevard, Suite 100 Concord, CA 94522  
Phone (925) 685-4569 Fax (925) 685-4838

SCALE: 1" = 10'

THE INCLUDED DRAWINGS, SPECIFICATIONS, IDEAS, DESIGNS AND ARRANGEMENTS REPRESENTED THEREIN ARE AND SHALL REMAIN THE PROPERTY OF ARRIE STUDIOS ARCHITECTS AND NO PART THEREOF SHALL BE COPIED, DISCLOSED TO OTHERS USED IN CONNECTION WITH ANY WORK OR PROJECT OTHER THAN THE SPECIFIC PROJECT FOR WHICH THEY WERE PREPARED AND DEVELOPED WITHOUT THE WRITTEN CONSENT OF ARRIE STUDIO ARCHITECTS. VISITS TO CONTACT WITH THESE DRAWINGS OR SPECIFICATIONS SHALL CONSTITUTE CONCLUSIVE EVIDENCE OF VIOLATION, SURVEILLANCE OF THESE DOCUMENTS FOR PLAGIARISM, AGENCY REVIEW MAY NOT BE CONSIDERED A WAIVER OF ARRIE STUDIO ARCHITECTS' RIGHTS. ARRIE STUDIO ARCHITECTS OCTOBER 2008-2012

0	REVISION	DATE

**GATEWAY HOTEL**  
550 GATEWAY BOULEVARD  
SOUTH SAN FRANCISCO, CA  
**SIGNING & STRIPING  
PLAN**

**SRI KRISHNA ENTERPRISE**  
300 GATEWAY BOULEVARD  
SOUTH SAN FRANCISCO, CA 94080



306 JOHNSON AVENUE  
SAN LUIS OBISPO, CA 93401  
CONTACT  
805.547.2240  
ARRL-STUDIO.COM  
ARRL'S ASSOCIATED STUDIOS  
ARLPHIL A. PHILIP ARRL'S ASSOCIATED STUDIOS

# Artis

C16 OF C16