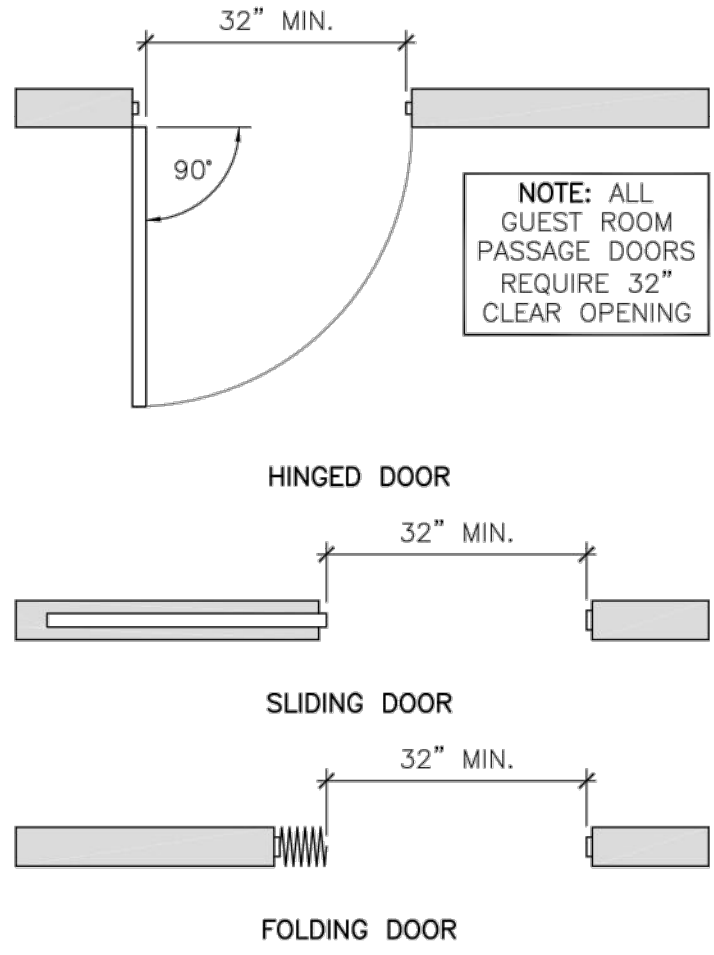


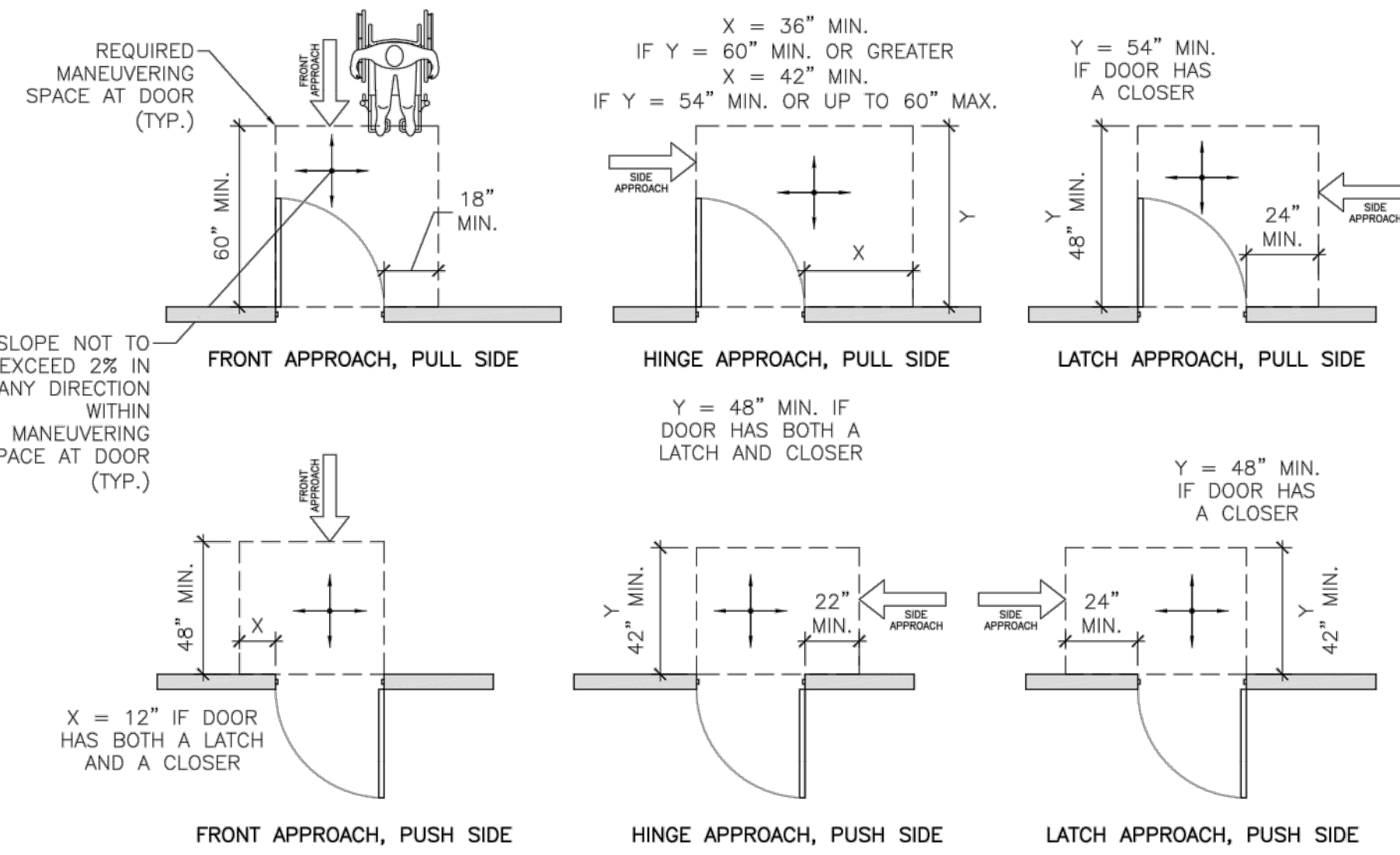
- NOTES:**
- CHARACTERS SHALL BE 48 INCHES MINIMUM AND 60 INCHES MAXIMUM ABOVE THE FLOOR OR GROUND SURFACE, MEASURED TO THE BASELINE OF THE CHARACTERS.
 - WHERE A SIGN CONTAINING TACTILE CHARACTERS IS PROVIDED AT A DOOR, THE SIGN SHALL BE ALONGSIDE THE DOOR ON THE LATCH SIDE. WHERE A TACTILE SIGN IS PROVIDED AT DOUBLE DOORS, THE SIGN SHALL BE TO THE RIGHT OF THE RIGHT-HAND DOOR. WHERE THERE IS NO WALL SPACE ON THE LATCH SIDE OF A SINGLE DOOR, OR TO THE RIGHT SIDE OF DOUBLE DOORS, SIGNS SHALL BE ON THE NEAREST ADJACENT WALL. SIGNS CONTAINING TACTILE CHARACTERS SHALL HAVE AN 18" MIN. BY 18" MIN. SPACE ON THE FLOOR, CENTERED ON THE SIGN, BEYOND THE ARC OF ANY DOOR SWING BETWEEN THE CLOSED POSITION AND 45 DEGREE OPEN POSITION.
 - DOOR-MOUNTED SIGNS SHALL BE PERMITTED ON THE PUSH SIDE OF DOORS WITH CLOSERS AND WITHOUT HOLD-OPEN DEVICES.
 - REFER TO SECTION 703 OF THE 2010 ADA STANDARDS FOR REQUIREMENTS OF TACTILE CHARACTERS, VISUAL CHARACTERS, AND PICTOGRAMS.

1 ACCESSIBLE ROOM IDENTIFICATION SIGNAGE DETAIL 1/4" = 1'-0"



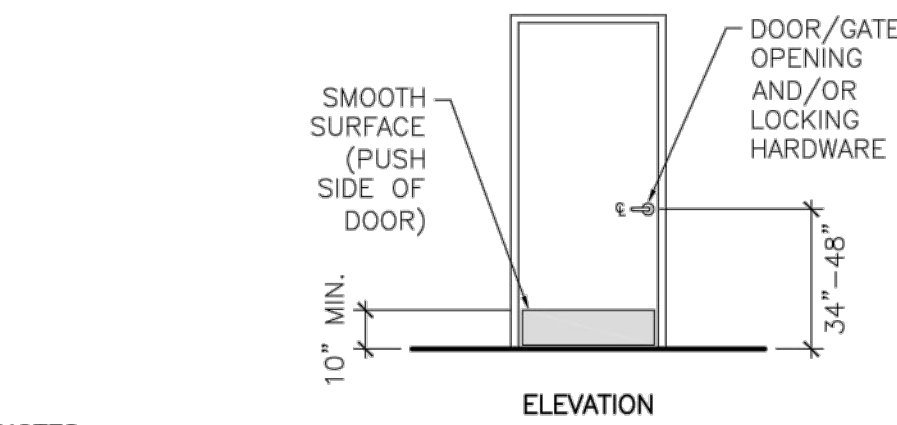
- NOTES:**
- OPENINGS MORE THAN 24" DEEP SHALL PROVIDE A CLEAR OPENING OF 36" MINIMUM.
 - THERE SHALL BE NO PROJECTIONS INTO THE REQUIRED CLEAR OPENING WIDTH LOWER THAN 34" ABOVE THE FINISH FLOOR OR GROUND. PROJECTIONS INTO THE CLEAR OPENING WIDTH BETWEEN 34" AND 80" ABOVE THE FINISH FLOOR OR GROUND SHALL NOT EXCEED 4".

2 CLEAR OPENING AT ACCESSIBLE DOORS/GATES DETAIL 1/2" = 1'-0"



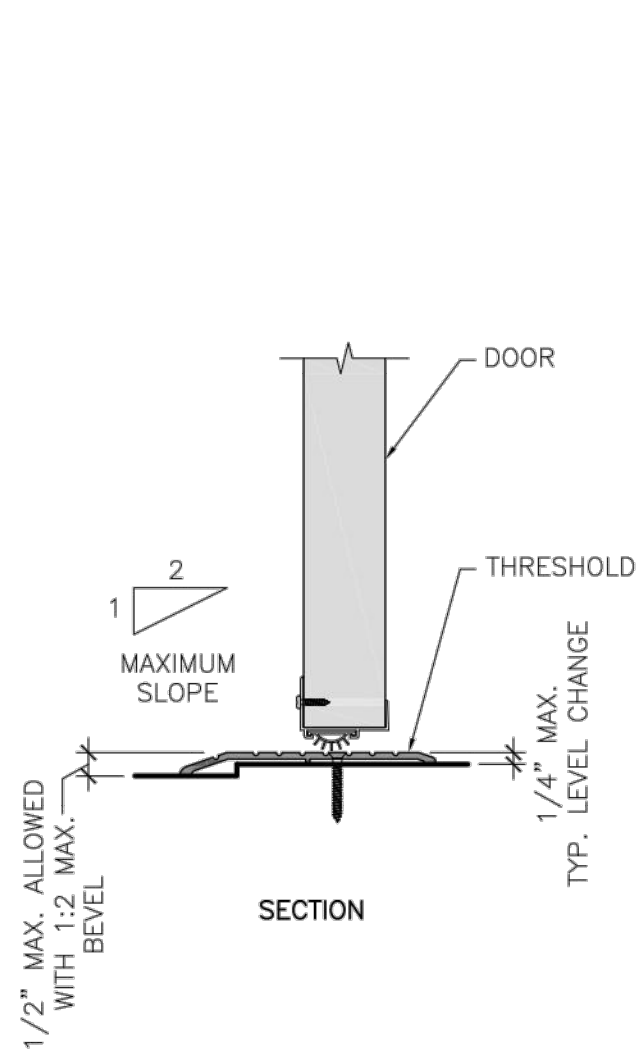
- NOTES:**
- MANEUVERING CLEARANCES FOR FORWARD APPROACH SHALL BE PROVIDED WHEN ANY OBSTRUCTION WITHIN 18" OF THE LATCH SIDE OF A DOORWAY PROJECTS MORE THAN 8" BEYOND THE FACE OF THE DOOR, MEASURED PERPENDICULAR TO THE FACE OF THE DOOR OR GATE. REFER TO DETAIL 4/2.0.
 - THE FLOOR OR GROUND SURFACE WITHIN THE REQUIRED MANEUVERING CLEARANCES SHALL SLOPE NO MORE THAN 1:48 (2%) AND CHANGES IN LEVEL WITHIN THIS AREA ARE NOT PERMITTED.

3 REQUIRED DOOR MANEUVERING CLEARANCES AT ACCESSIBLE DOORS/GATES 1/4" = 1'-0"

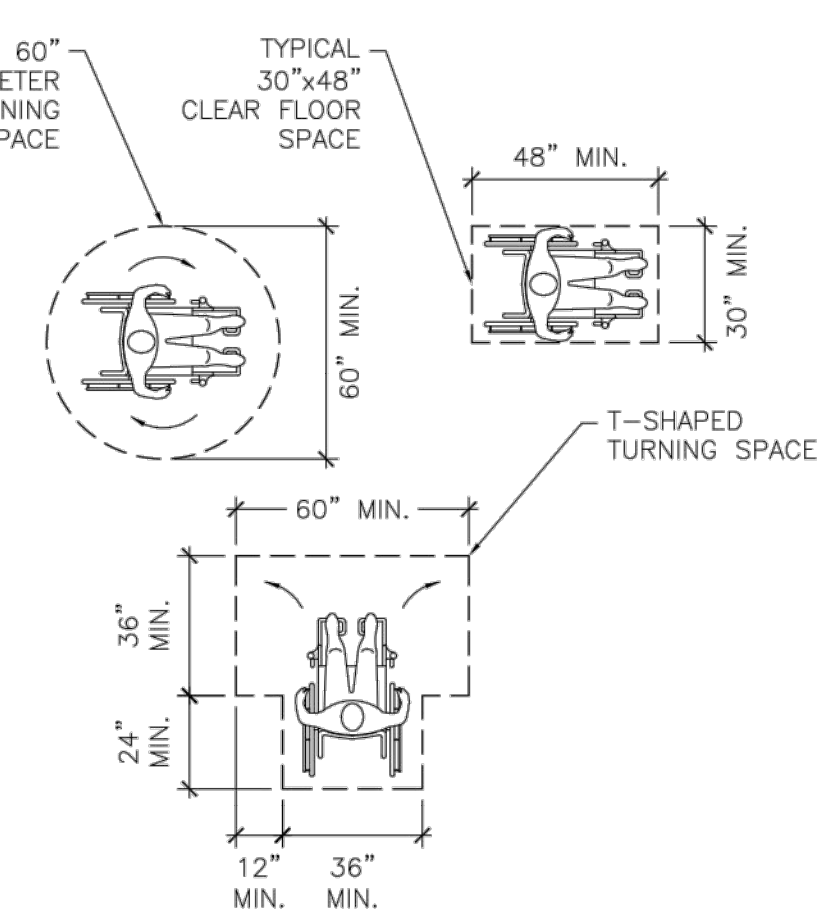


- NOTES:**
- HANDLES, PULLS, LATCHES, LOCKS, AND OTHER OPERABLE PARTS ON ACCESSIBLE DOORS SHALL HAVE A SHAPE THAT IS EASY TO GRIP WITH ONE HAND AND DOES NOT REQUIRE TIGHT GRASPING, PINCHING, OR TWISTING OF THE WRIST TO OPERATE. SUCH HARDWARE SHALL BE 34 INCHES MINIMUM AND 48 INCHES MAXIMUM ABOVE THE FLOOR OR GROUND. WHERE SLIDING DOORS ARE IN THE FULLY OPEN POSITION, OPERATING HARDWARE SHALL BE EXPOSED AND USABLE FROM BOTH SIDES.
 - DOOR CLOSERS SHALL BE ADJUSTED SO THAT FROM AN OPEN POSITION OF 90 DEGREES, THE TIME REQUIRED TO MOVE THE DOOR TO AN OPEN POSITION OF 12 DEGREES SHALL BE 5 SECONDS MINIMUM.
 - DOOR SPRING HINGES SHALL BE ADJUSTED SO THAT FROM THE OPEN POSITION OF 70 DEGREES, THE DOOR SHALL MOVE TO THE CLOSED POSITION IN 1.5 SECONDS MINIMUM, MEASURED UNDER AMBIENT CONDITIONS.
 - FIRE DOORS SHALL HAVE THE MINIMUM OPENING FORCE ALLOWED BY THE APPROPRIATE ADMINISTRATIVE AUTHORITY. THE MAXIMUM FORCE FOR PUSHING OPEN OR PULLING OPEN DOORS OTHER THAN FIRE DOORS SHALL BE AS FOLLOWS:
 - INTERIOR HINGED DOOR: 5.0 POUNDS.
 - SLIDING OR FOLDING DOOR: 5.0 POUNDS.THESE FORCES DO NOT APPLY TO THE FORCE REQUIRED TO RETRACT LATCH BOLTS OR DISENGAGE OTHER DEVICES THAT HOLD THE DOOR IN A CLOSED POSITION.
 - DOOR SURFACES WITHIN 10 INCHES OF THE FLOOR OR GROUND MEASURED VERTICALLY SHALL BE A SMOOTH SURFACE ON THE PUSH SIDE EXTENDING THE FULL WIDTH OF THE DOOR. PARTS CREATING HORIZONTAL OR VERTICAL JOINTS IN SUCH SURFACE SHALL BE WITHIN 1/16 INCH OF THE SAME PLANE AS THE OTHER. CAVITIES CREATED BY ADDED KICK PLATES SHALL BE CAPPED.

6 ACCESSIBLE DOOR & GATE HARDWARE DETAIL 1/4" = 1'-0"

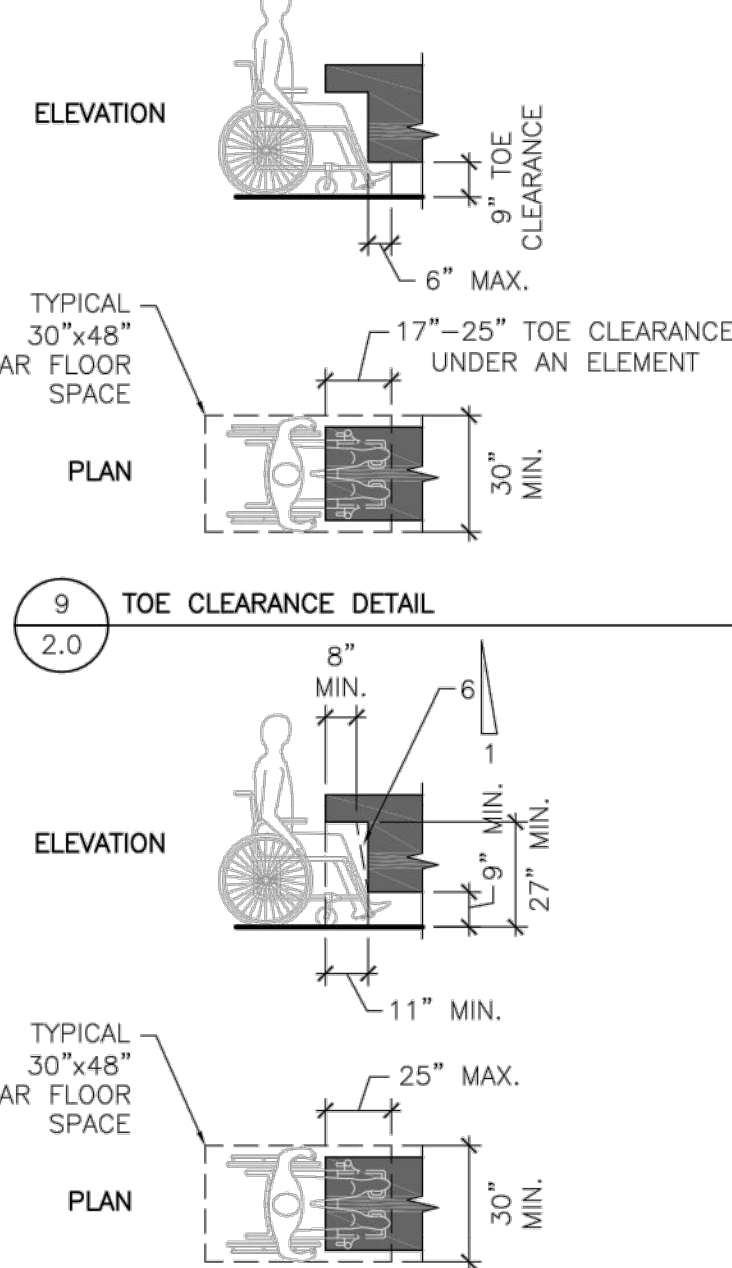


7 ACCESSIBLE DOOR THRESHOLD DETAIL NOT TO SCALE

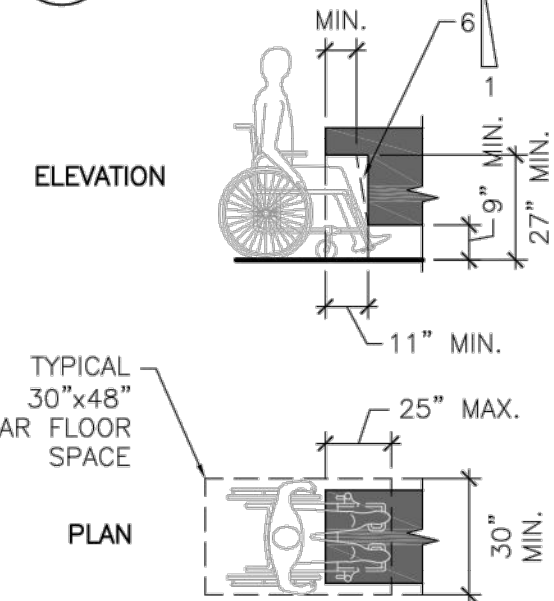


- NOTES:**
- THE FLOOR OR GROUND SURFACE WITHIN THE REQUIRED MANEUVERING CLEARANCES OR CLEAR FLOOR SPACE SHALL SLOPE NO MORE THAN 1:48 (2%) AND CHANGES IN LEVEL WITHIN THIS AREA ARE NOT PERMITTED.
 - WHERE TURNING SPACE IS REQUIRED, THE CIRCLE OR THE T-SHAPED SPACE MAY BE USED.

8 CLEAR FLOOR & TURNING SPACE 1/4" = 1'-0"



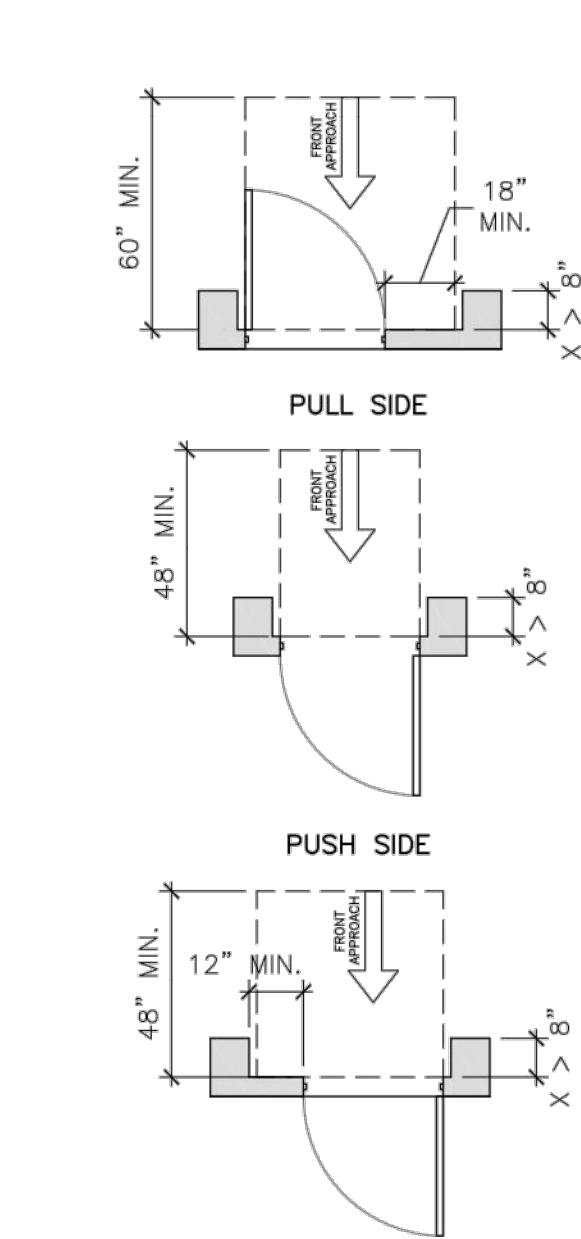
9 TOE CLEARANCE DETAIL 1/4" = 1'-0"



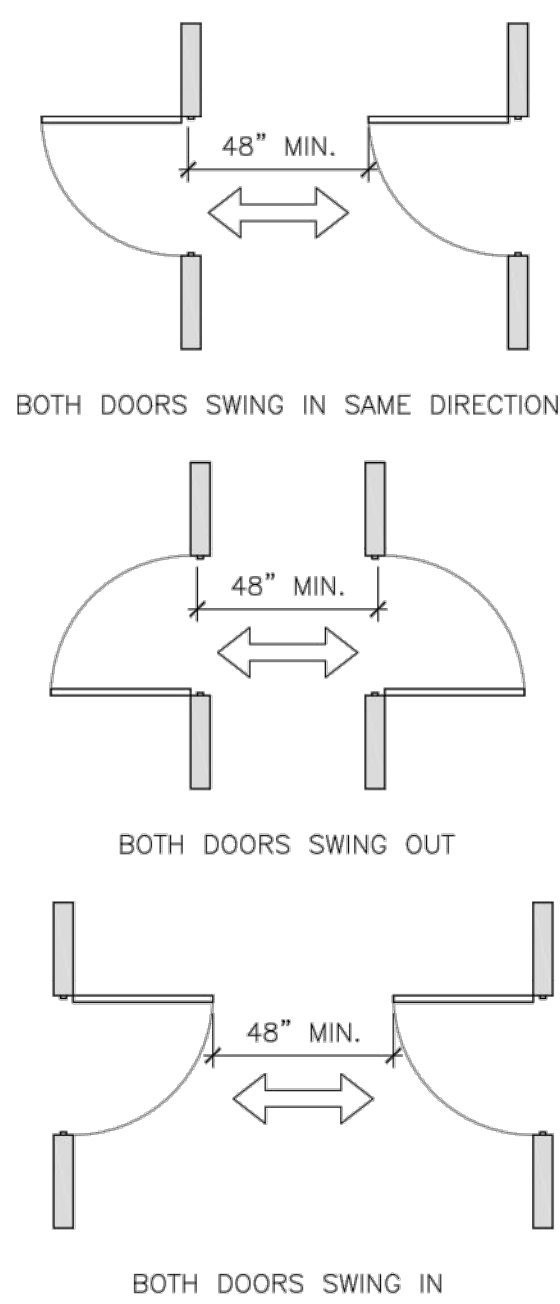
10 KNEE CLEARANCE DETAIL 1/4" = 1'-0"

- NOTES:**
- SPACE UNDER AN ELEMENT BETWEEN THE FINISH FLOOR OR GROUND AND 9" ABOVE THE FINISH FLOOR OR GROUND SHALL BE CONSIDERED TOE CLEARANCE.
 - TOE CLEARANCE SHALL EXTEND 25" MAX. UNDER AN ELEMENT.
 - WHERE TOE CLEARANCE IS REQUIRED AT AN ELEMENT AS PART OF THE CLEAR FLOOR SPACE, THE TOE CLEARANCE SHALL EXTEND 17" MIN. UNDER THE ELEMENT.
 - TOE CLEARANCE SHALL BE 30" WIDE MINIMUM.

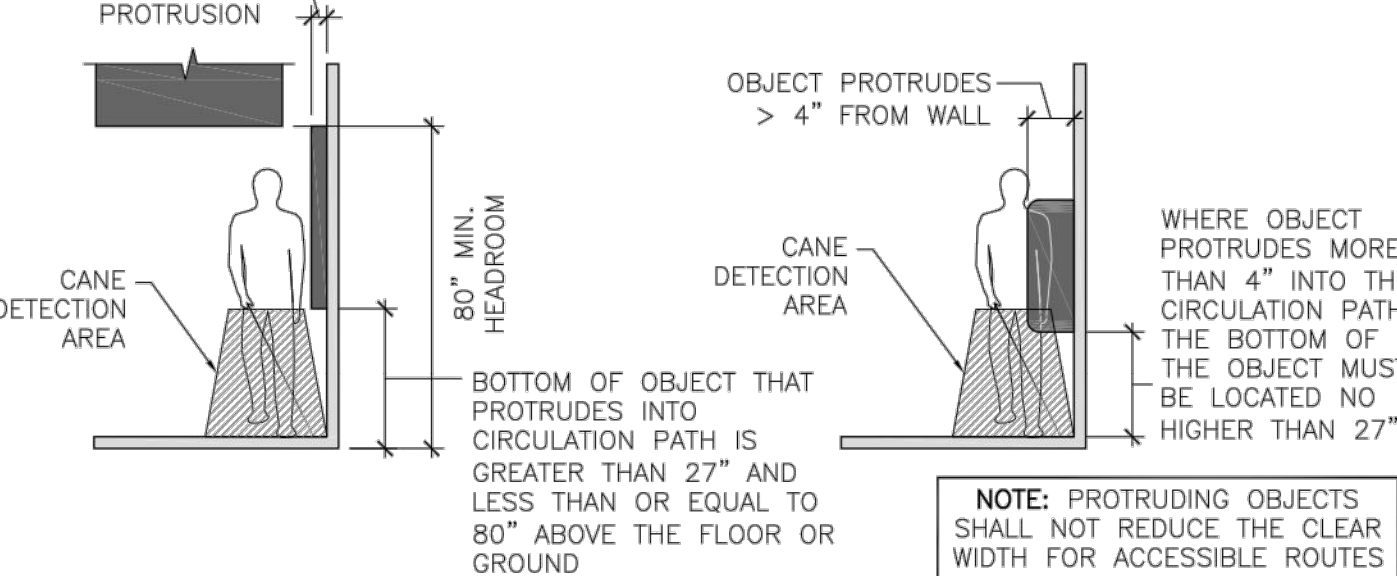
- NOTES:**
- SPACE UNDER AN ELEMENT BETWEEN 9" AND 27" ABOVE THE FINISH FLOOR SHALL BE CONSIDERED KNEE CLEARANCE.
 - KNEE CLEARANCE SHALL EXTEND 25" MAX. UNDER AN ELEMENT AT 9" ABOVE THE FINISH FLOOR OR GROUND.
 - WHERE KNEE CLEARANCE IS REQUIRED UNDER AN ELEMENT AS PART OF A CLEAR FLOOR SPACE, THE KNEE CLEARANCE SHALL BE 11" DEEP MIN. AT 9" ABOVE THE FLOOR OR GROUND, AND 8" DEEP MIN. AT 27" ABOVE THE FINISH FLOOR OR GROUND.
 - BETWEEN 9" AND 27" ABOVE THE FINISH FLOOR OR GROUND, THE KNEE CLEARANCE SHALL BE PERMITTED TO REDUCE AT A RATE OF 1" IN DEPTH FOR EVERY 6" IN HEIGHT.



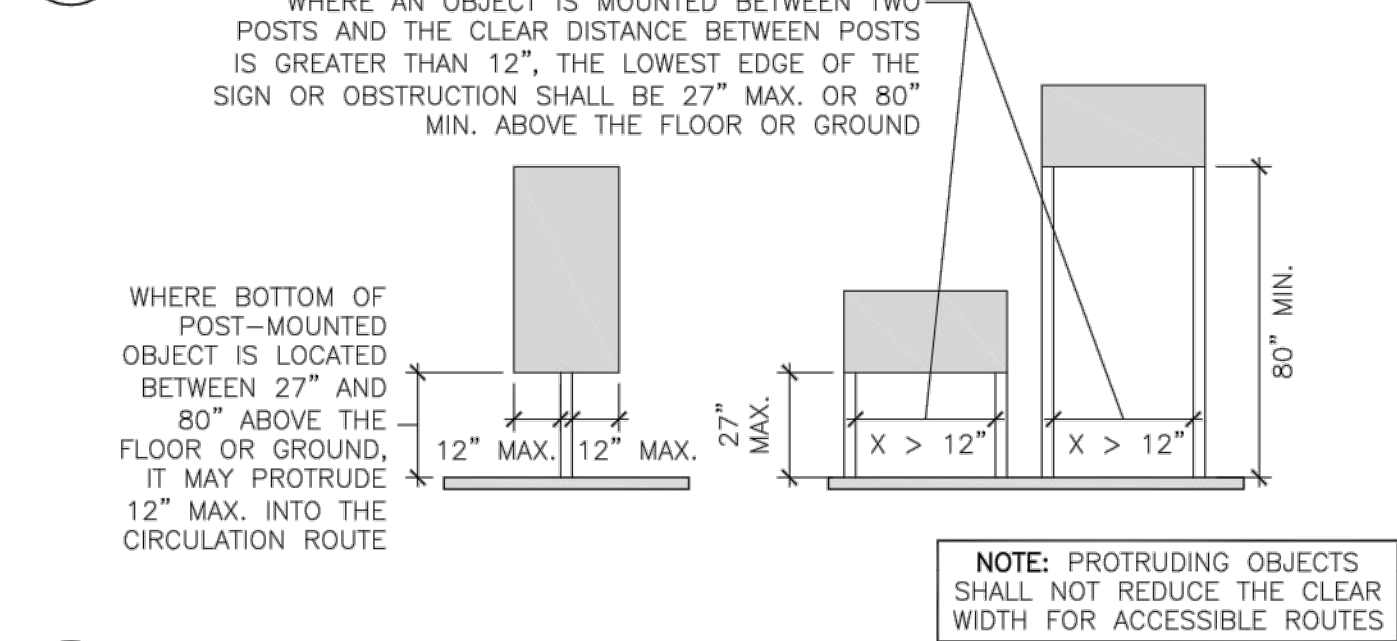
4 MANEUVERING CLEARANCE AT RECESSED DOORS DETAIL 1/4" = 1'-0"



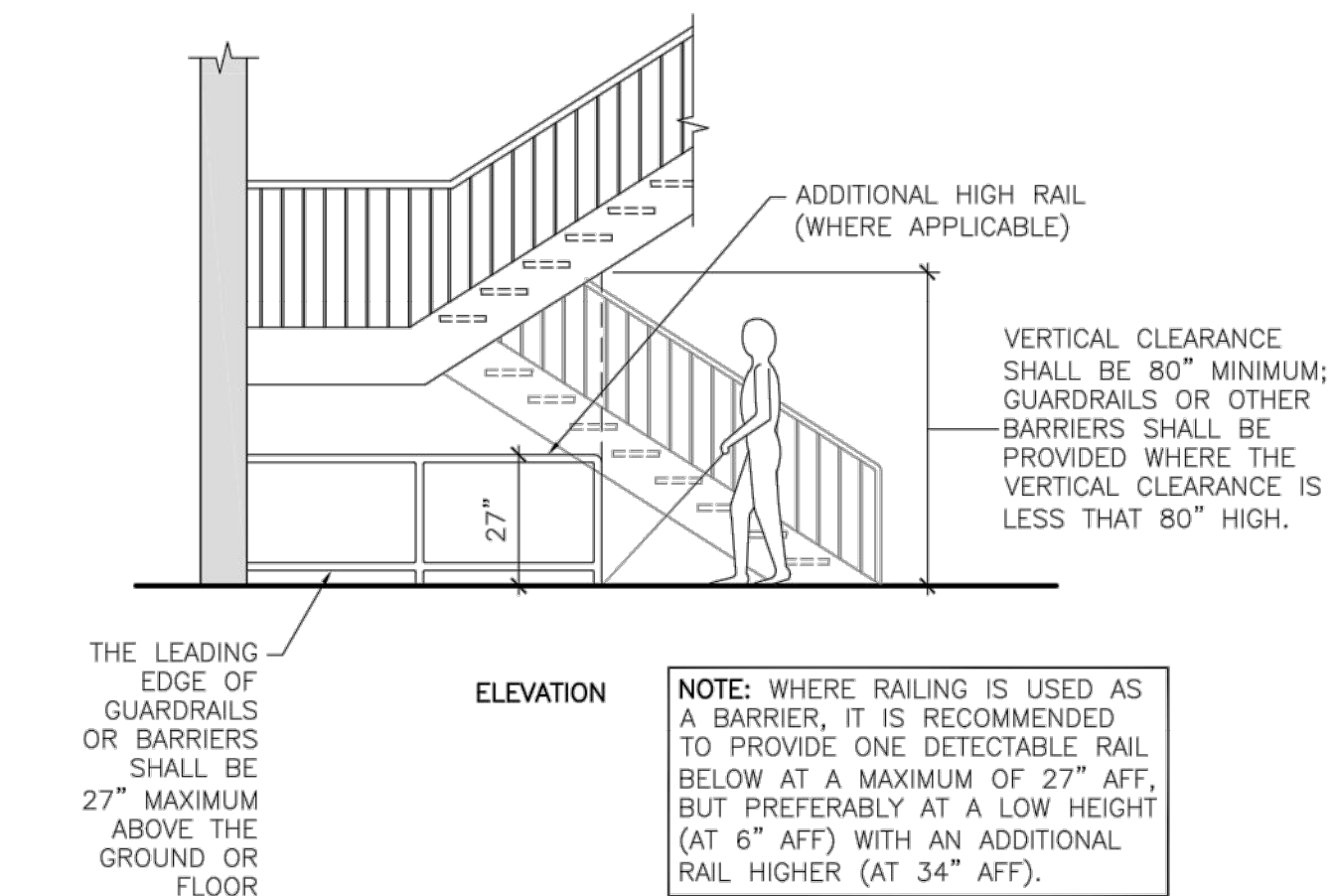
5 DOORS IN A SERIES DETAIL 1/4" = 1'-0"



11 PROTRUDING OBJECTS DETAIL 1/4" = 1'-0"



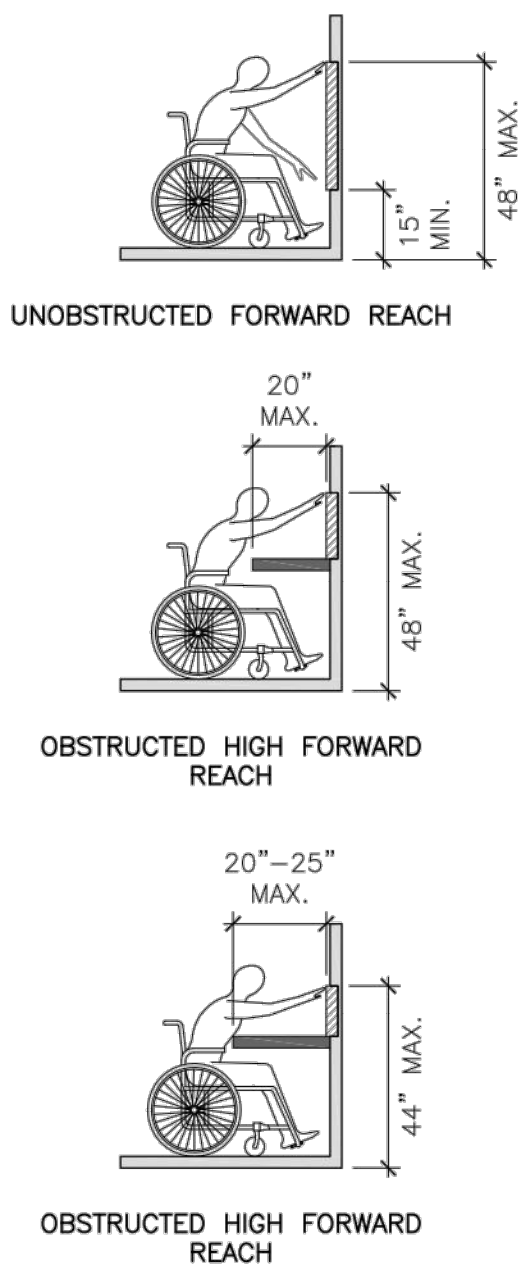
12 POST-MOUNTED PROTRUDING OBJECTS DETAIL 1/4" = 1'-0"



13 VERTICAL CLEARANCE DETAIL 1/4" = 1'-0"

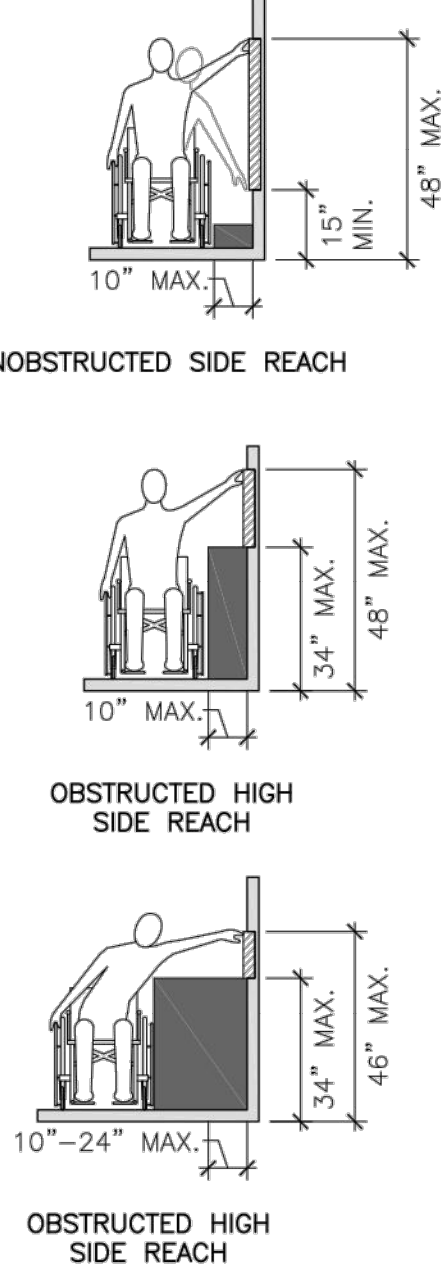
- NOTES:**
- WHERE A FORWARD REACH IS UNOBSTRUCTED, THE HIGH FORWARD REACH SHALL BE 48" MAX. AND THE LOW FORWARD REACH SHALL BE 15" MIN. ABOVE THE FINISH FLOOR OR GROUND.
 - WHERE A HIGH FORWARD REACH IS OVER AN OBSTRUCTION, THE CLEAR FLOOR SPACE SHALL EXTEND BENEATH THE ELEMENT FOR A DISTANCE NOT LESS THAN THE REQUIRED REACH DEPTH OVER THE OBSTRUCTION. THE HIGH FORWARD REACH SHALL BE 48" MAX. WHERE THE REACH DEPTH IS 20" MAX. WHERE THE REACH DEPTH EXCEEDS 20", THE HIGH FORWARD REACH SHALL BE 44" MAX. AND THE REACH DEPTH SHALL BE 25" MAX.

14 FORWARD REACH DETAIL 1/4" = 1'-0"



- NOTES:**
- WHERE A CLEAR FLOOR OR GROUND SPACE ALLOWS A PARALLEL APPROACH TO AN ELEMENT AND THE SIDE REACH IS UNOBSTRUCTED, THE HIGH SIDE REACH SHALL BE 48" MAX. AND THE LOW SIDE REACH SHALL BE 15" MIN. ABOVE THE FINISH FLOOR OR GROUND.
 - WHERE A CLEAR FLOOR OR GROUND SPACE ALLOWS A PARALLEL APPROACH TO AN ELEMENT AND THE HIGH SIDE REACH IS OVER AN OBSTRUCTION, THE HEIGHT OF THE OBSTRUCTION SHALL BE 34" MAX. AND THE DEPTH OF THE OBSTRUCTION SHALL BE 24" MAX. THE HIGH SIDE REACH SHALL BE 48" MAX. FOR A REACH DEPTH OF 10" MAX. WHERE THE REACH RANGE EXCEEDS 10", THE HIGH SIDE REACH SHALL BE 46" MAX. FOR A REACH DEPTH OF 24" MAX.

15 SIDE REACH DETAIL 1/4" = 1'-0"



PROJECT NAME:

Old Fannin Road Flowood, Mississippi

SHEET TITLE:

Accessibility Guidelines

PROJECT NO.
13012

LATEST REVISION:
△

DRAWN BY:
ocj

CHECKED BY:
rm

SHEET NUMBER:

DATE:
July 11, 2015

ADA-2.0