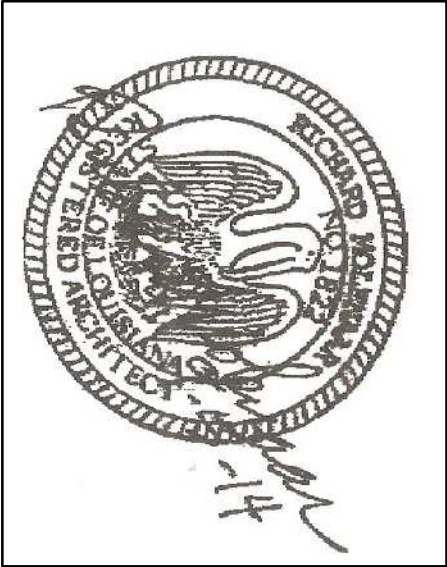


Richard Molenaar
ARCHITECT



PROJECT NAME:

HOMER 2
SUITES BY HILTON

W Maine Street West Monroe, Louisiana

SHEET TITLE:

Rated Partition Plans

PROJECT NO. LATEST REVISION:

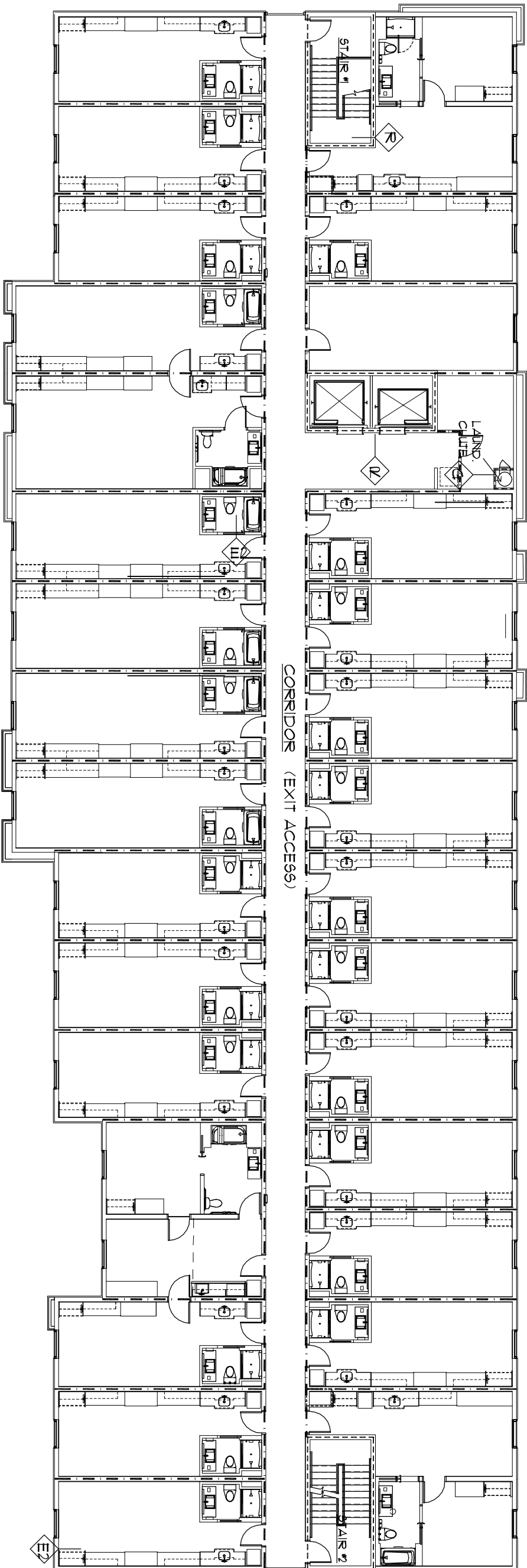


DRAWN BY: CHECKED BY: SHEET NUMBER:

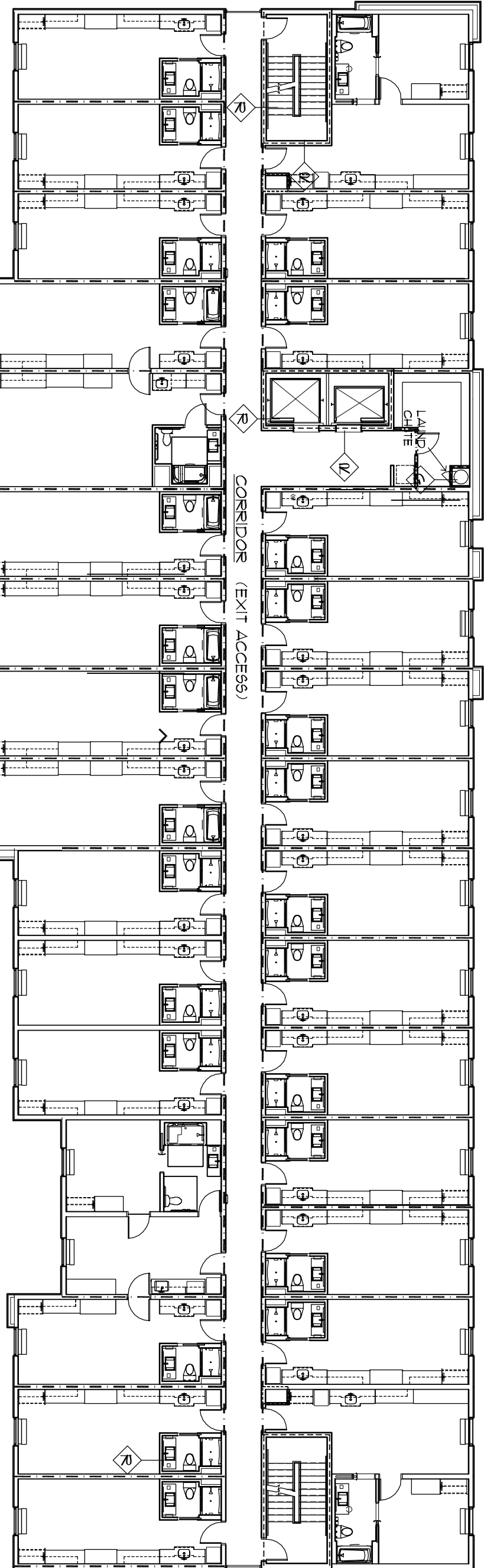
ci mm

DATE: Sept 5, 2014

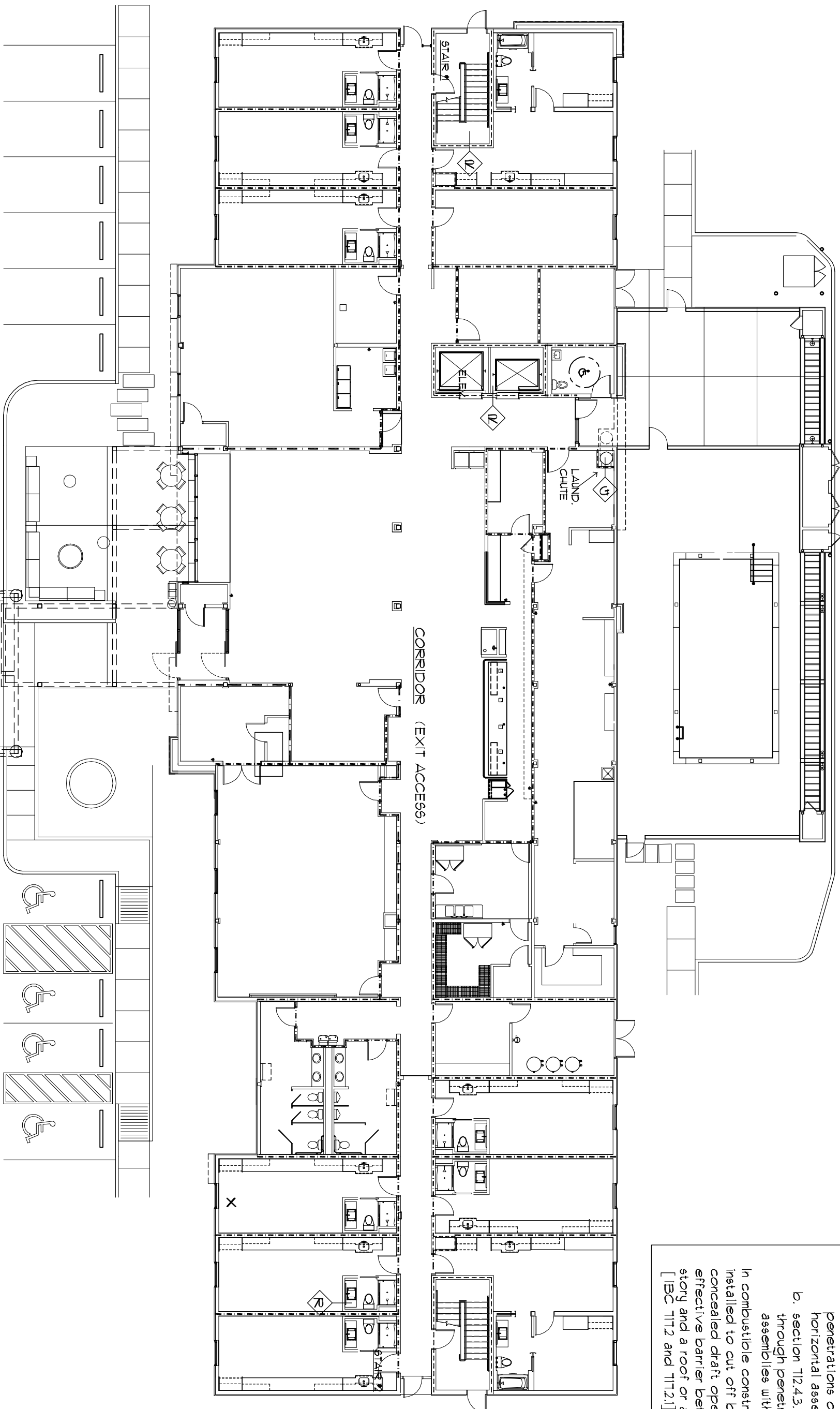
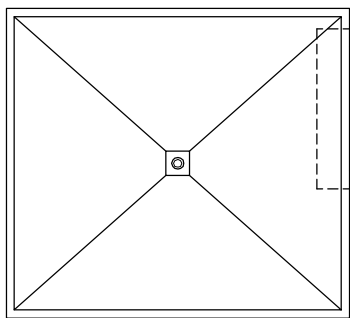
A107



4 4th FLR. RATED PARTITION PLAN
1/16" = 1'-0"



2 2nd/3rd FLR. RATED PARTITION PLAN
1/16" = 1'-0"



1 GR. FLR. RATED PARTITION PLAN
1/16" = 1'-0"

NOTE
The provisions of IBC Section 712 shall govern the materials and the methods of construction used to protect through penetrations and membrane penetrations.

1. Penetrations into or through fire-resistance-rated vertical or horizontal assemblies in which openings are protected shall meet the requirements of section 712.3.

2. Penetrations of a structural floor or the ceiling membrane of a roof/ceiling assembly shall meet the requirements of section 707 SHAFR ENCLOSURES, or

a. section 712.4.11, or 712.4.12 for through penetrations of fire-resistance-rated horizontal assemblies, and

b. section 712.4.31 through 712.4.32 for through penetrations of horizontal assemblies without fire-resistance-ratings.

In combustible construction fireblocking must be installed to cut off both vertical and horizontal concealed draft openings and must form an effective draft stop between floors, between a top floor and roof or attic.

[IBC 712 and 712.1]

--- DENOTES 2 HR FIRE RATING
2 HR CONC. BLOCK WALL;
CALCAREOUS OR SLICED
CORED CONC. BLK. HAVING
MIN. EQUIV. THICKNESS
≥ 4.2";
UL DESIGN U205
(STAIRWAY ELEVATOR
SHAFT)

◇ 2 HR SHAFR WALL;
UL DESIGN U438
(LAUNDRY CHUTE / MECH. CHASE)

--- DENOTES 1 HR FIRE RATING