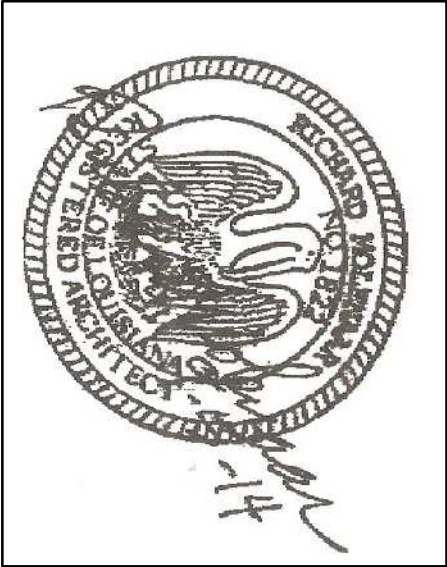


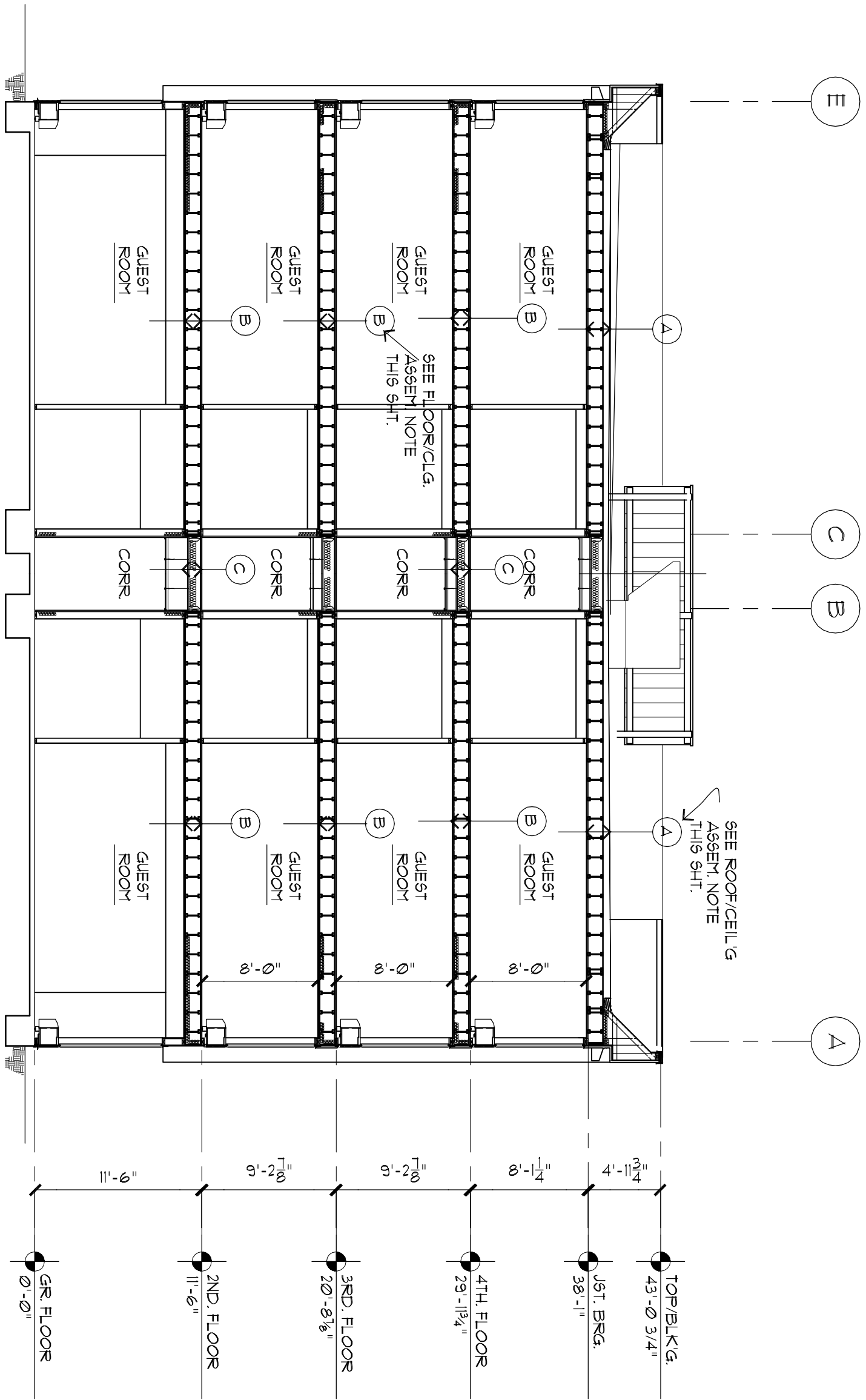
Richard Molenaar
ARCHITECT



PROJECT NAME:
HOMER2
SUITES BY HILTON
W Maine Street West Monroe, Louisiana

SHEET TITLE:

PROJECT NO.	LATEST REVISION:
13010	
DRAWN BY: ccj	CHECKED BY:
DATE: Sept 5, 2014	SHEET NUMBER: A403



BUILDING SECTION

1 1/8" = 1'-0"

AK-X-X

FIRE RESISTANT ASSEMBLIES

(A) ROOF/CEILING ASSEMBLY - 1 HR.

ROOF/CEILING ASSEMBLY ON WOOD I-JOISTS, ASSEMBLY SAME AS ASST. FC 2601 GYPSUM ASSOCIATION FIRE RESISTANCE DESIGN MANUAL.

BASE LAYER 3/4" TYPE "X" GYPSUM WALLBOARD APPLIED AT RIGHT ANGLES TO WOOD I-JOISTS (SEE STRUCT. PLANS FOR SPACING) WITH 1/4" TYPE 6 DRYWALL, SCREWS 24" O.C. PLACE LAYER 3/4" TYPE "X" GYPSUM WALLBOARD OVER LAYER 3/4" TYPE "X" GYPSUM WALLBOARD WITH 1/4" TYPE 6 DRYWALL, SCREWS 24" O.C. AT JOINTS AND INTERMEDIATE TRUSSES AND 1/4" TYPE 6 DRYWALL, SCREWS 24" O.C. PLACED 2" BACK ON EITHER SIDE OF END JOINTS. JOINTS OFFSET 24" FROM BASE LAYER JOINTS. WOOD JOISTS SUPPORTING 3/4" WOOD STRUCTURAL PANELS APPLIED AT RIGHT ANGLES TO JOISTS WITH 6d NAILS.

(B) FLOOR/CEILING ASSEMBLY - 1 HR.

FLOOR/CEILING ASSEMBLY ON WOOD I-JOISTS, ASSEMBLY SAME AS ASST. FC 2601 GYPSUM ASSOCIATION FIRE RESISTANCE DESIGN MANUAL.

BASE LAYER 1/2" TYPE "X" GYPSUM BOARD BASE APPLIED AT RIGHT ANGLES TO RESILIENT CHANNELS 6" O.C. WITH 1 1/4" TYPE 6 DRYWALL, SCREWS 24" O.C. RESILIENT CHANNELS APPLIED AT RIGHT ANGLES TO MINIMUM 8 1/4" DEEP WOOD I-JOISTS WITH A MINIMUM 1/4" DEEP x 1 1/2" WIDE FLANGES AND MINIMUM 1/4" DEEP (SEE STRUCT. FOR SPACING) WITH 1/4" TYPE 6 DRYWALL, SCREWS 24" O.C. TYPE "X" GYPSUM BOARD APPLIED AT RIGHT ANGLES TO WOOD I-JOISTS WITH 1/4" TYPE 6 DRYWALL, SCREWS 24" O.C. AT JOINTS AND INTERMEDIATE TRUSSES AND 1/4" TYPE 6 DRYWALL, SCREWS 24" O.C. PLACED 2" BACK ON EITHER SIDE OF END JOINTS. JOINTS OFFSET 24" FROM BASE LAYER JOINTS. WOOD I-JOISTS SUPPORTING 3/4" WOOD STRUCTURAL PANEL, GYPSUM FLOOR LONG EDGES 1 1/4" APPLIED AT RIGHT ANGLES TO JOISTS WITH CONSTRUCTION ADHESIVE AND 6d RING SHANK NAILS 24" O.C. 3/4" GYPSUM FLOOR TOPPING WITH ACOUSTICAL MAT APPLIED OVER GYPSUM FLOOR.

(C) FLOOR/CEILING ASSEMBLY - 1 HR.

FLOOR/CEILING ASSEMBLY ON WOOD I-JOISTS, ASSEMBLY SAME AS ASST. FC 2601 GYPSUM ASSOCIATION FIRE RESISTANCE DESIGN MANUAL.

ONE LAYER 3/4" PROPRIETARY TYPE "X" GYPSUM BOARD APPLIED AT RIGHT ANGLES TO RESILIENT CHANNELS 6" O.C. WITH 1 1/4" TYPE 6 DRYWALL, SCREWS 24" O.C. GYPSUM BOARD END JOINTS LOCATED MIDWAY BETWEEN CHANNELS AND ATTACHED TO ADDITIONAL PIECES OF CHANNEL WITH 1 1/2" TYPE 6 SCREWS 24" O.C. RESILIENT RIBBING CHANNELS APPLIED TO 2x6 WOOD JOISTS SUPPORTING 3/4" WOOD STRUCTURAL PANEL, GYPSUM FLOOR LONG EDGES 1 1/4" APPLIED AT RIGHT ANGLES TO JOISTS WITH CONSTRUCTION ADHESIVE AND 6d RING SHANK NAILS 24" O.C. 3/4" GYPSUM FLOOR TOPPING WITH ACOUSTICAL MAT APPLIED OVER GYPSUM FLOOR.