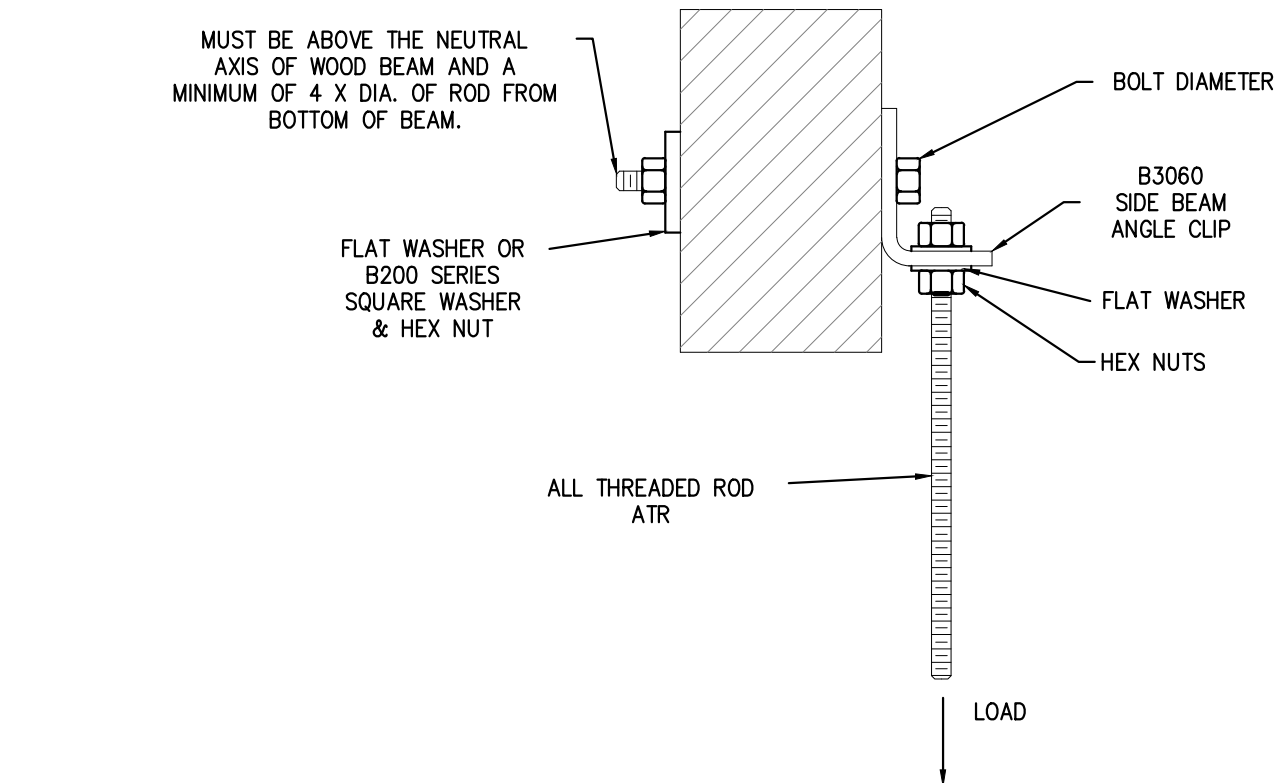
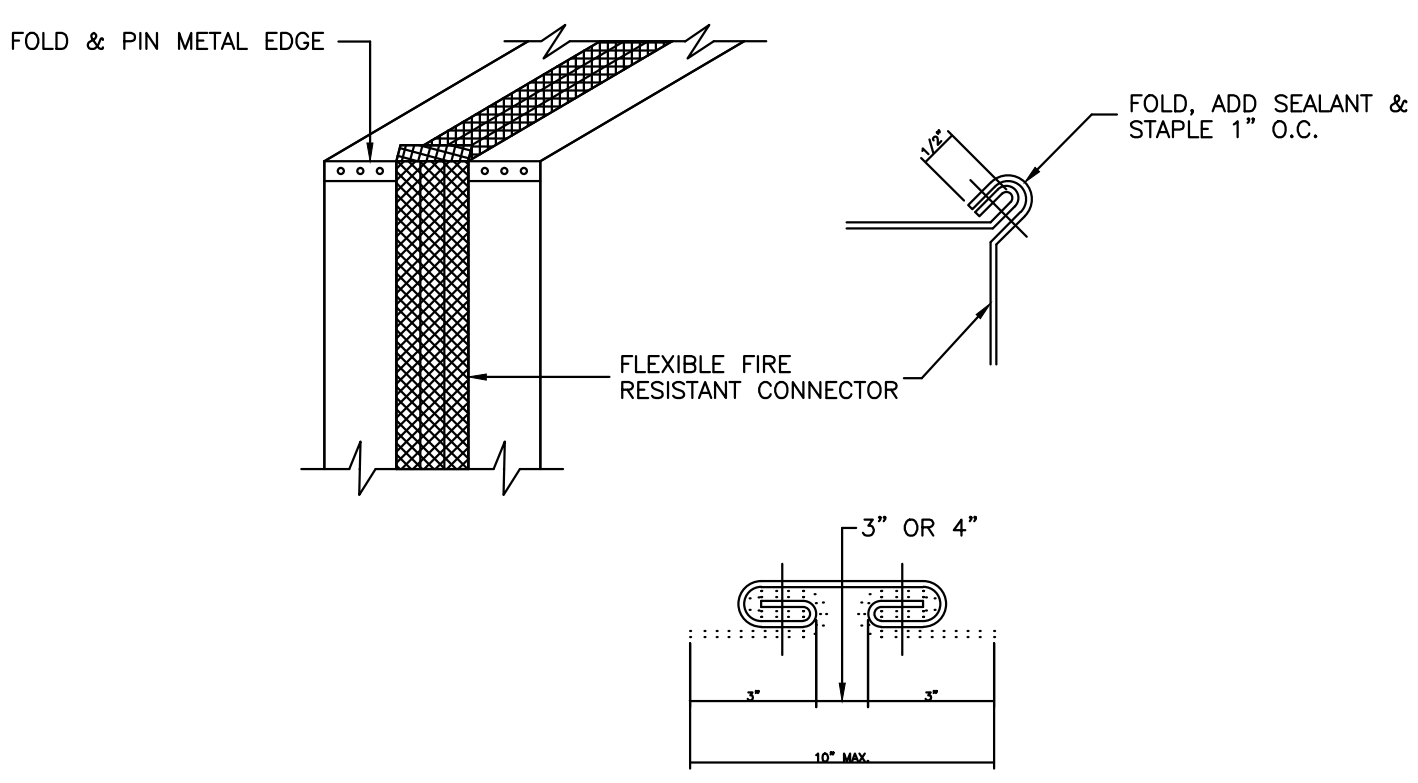


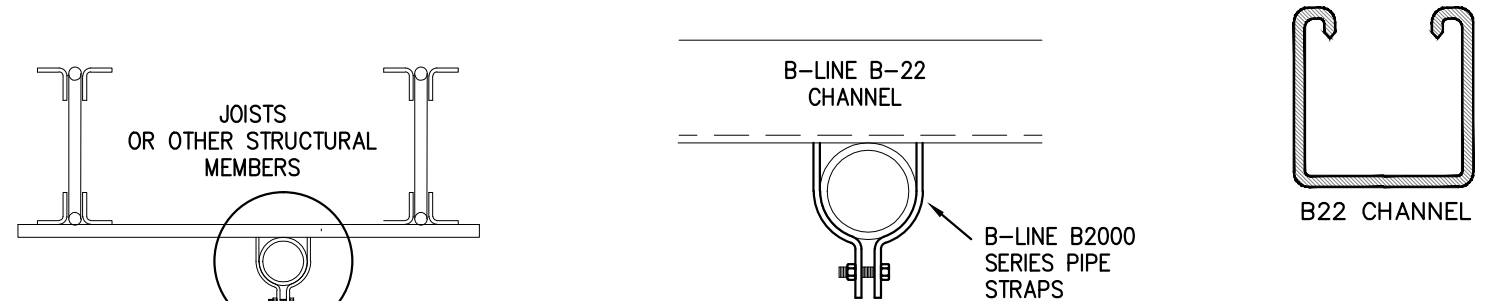
M  
L  
K  
J  
H  
G  
F  
E  
D  
C  
B  
A



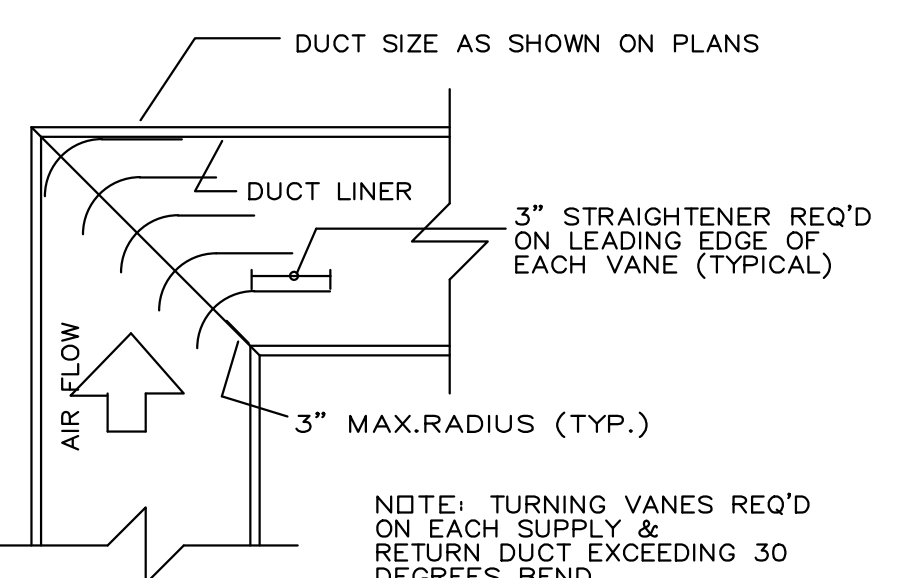
**WOOD ATTACHMENTS**  
NO SCALE



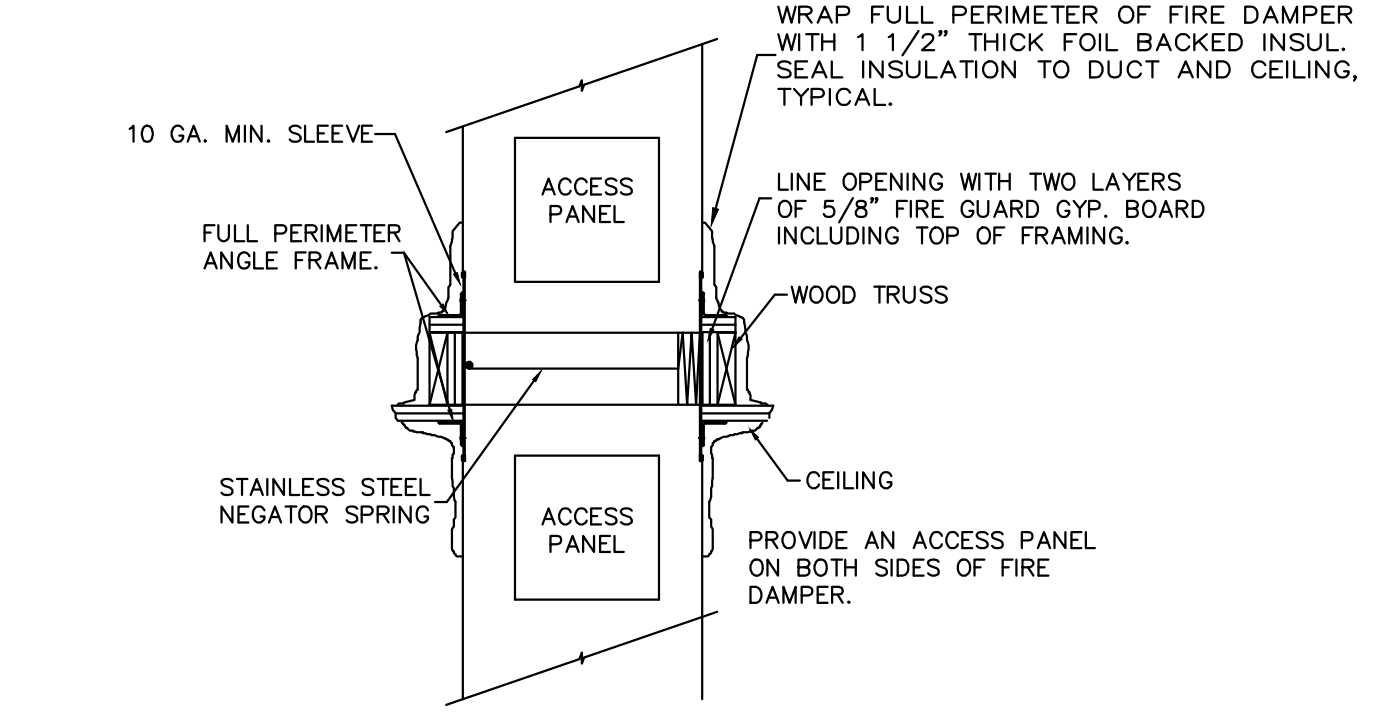
**FLEXIBLE CONNECTION DETAIL**  
NO SCALE



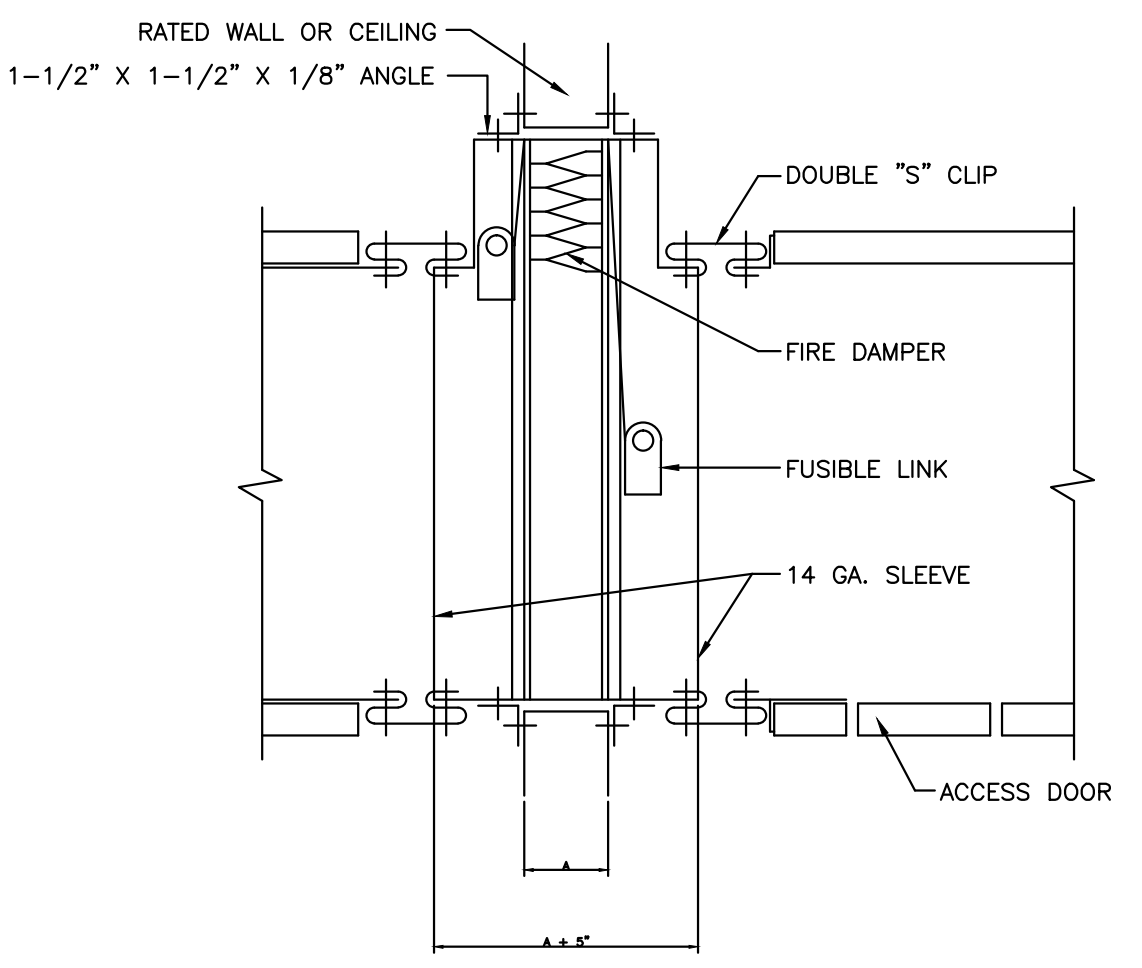
**SEISMIC GAS PIPE SUPPORT DETAILS**  
NO SCALE



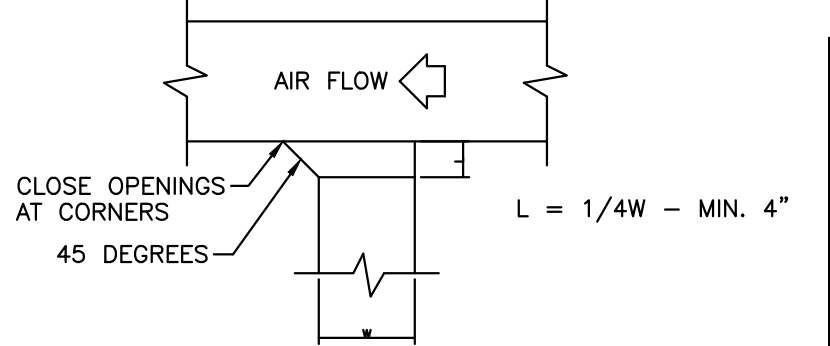
**TURNING VANE DETAIL**  
NO SCALE



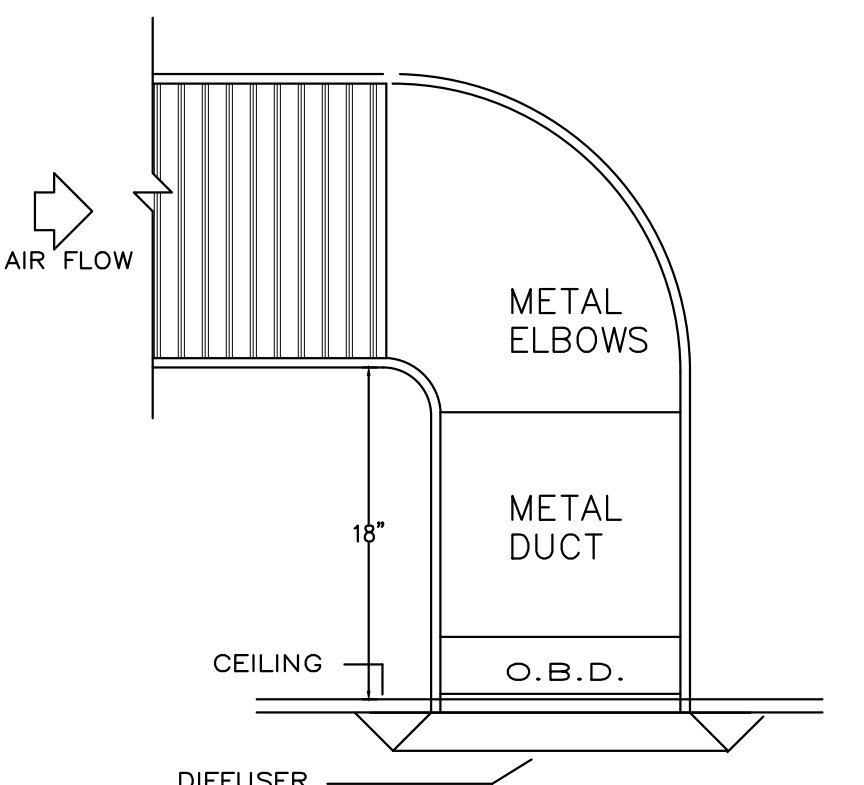
**HORIZONTAL FIRE DAMPER DETAIL**



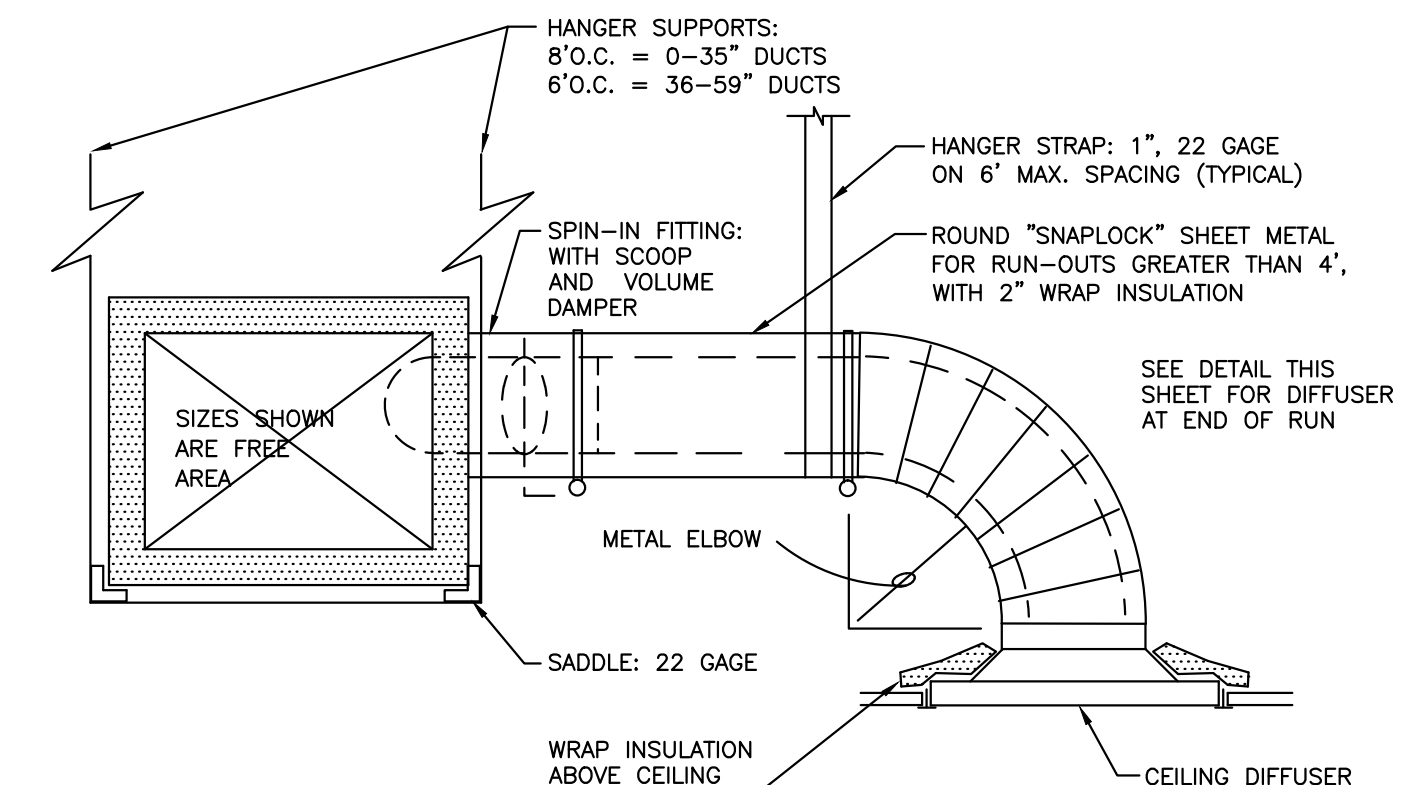
**FIRE DAMPER DETAIL**  
NO SCALE



**RETURN OR EXHAUST DUCT TAP DETAILS**  
NO SCALE

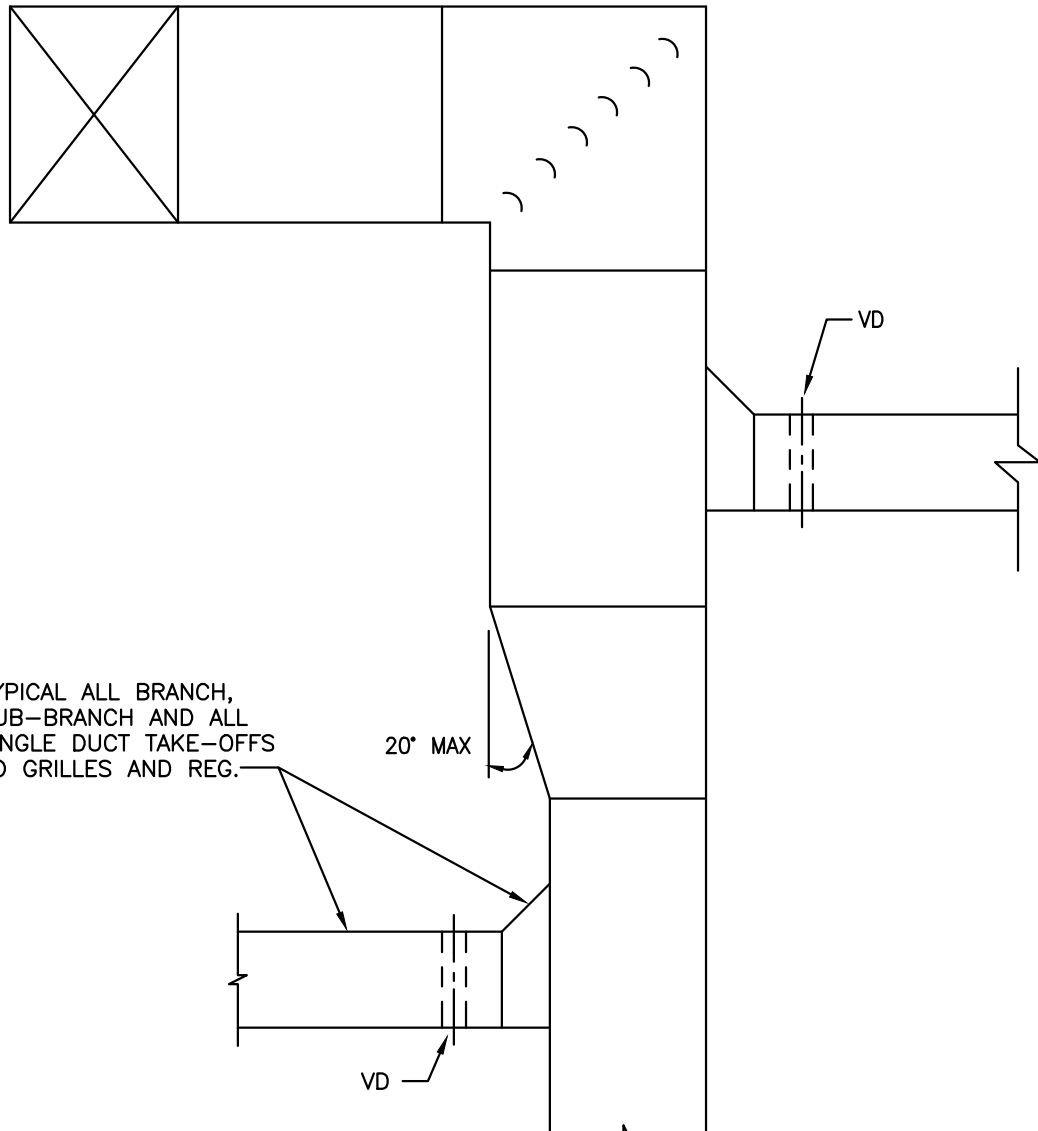


**DIFFUSER AT END OF DUCT**  
NO SCALE

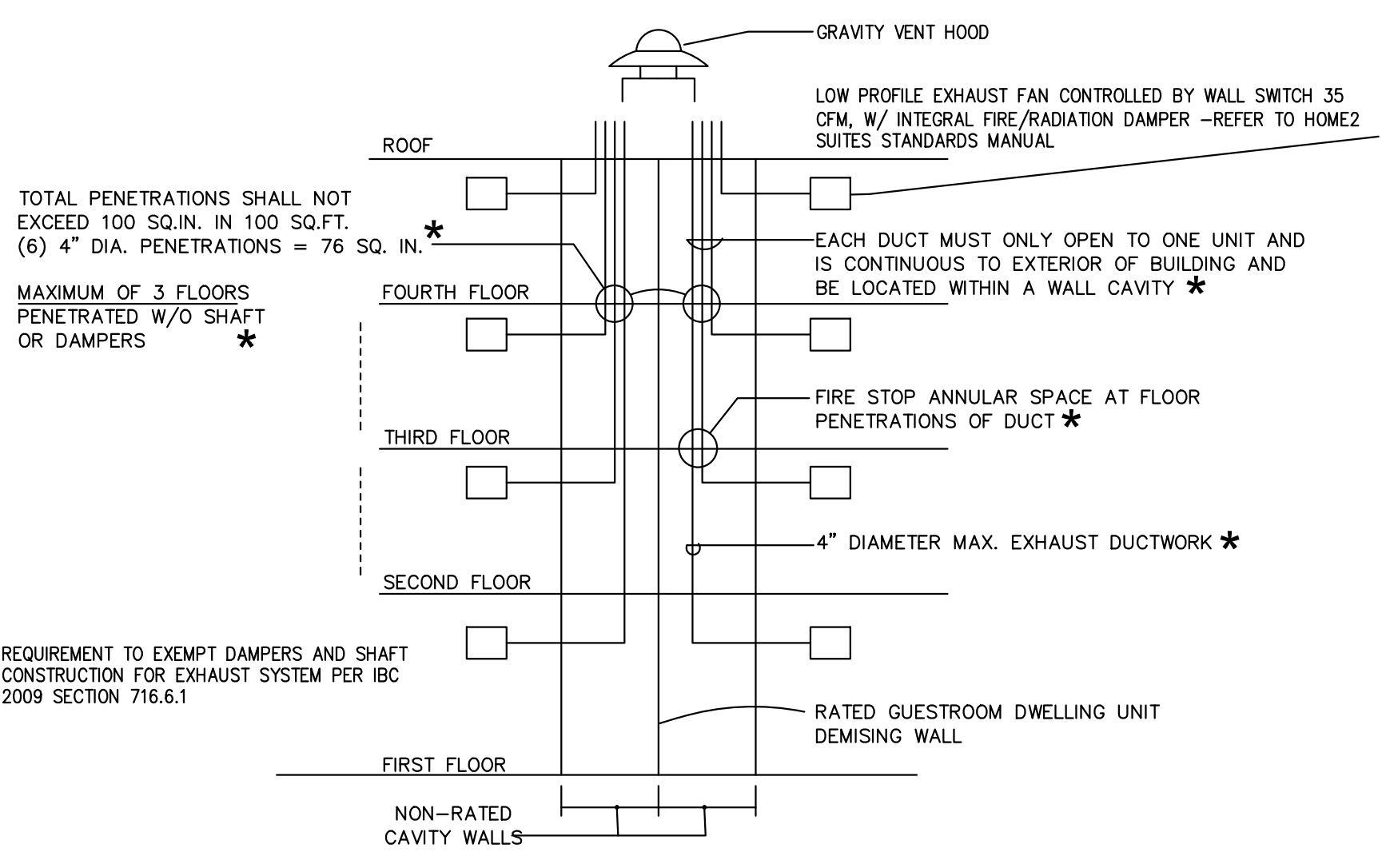


**DUCT DETAIL**  
NO SCALE

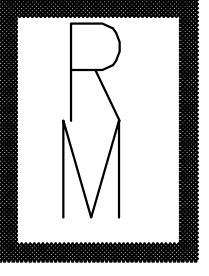
- NOTES:
1. HANGER SUPPORTS SHALL BE AS NOTED ABOVE FOR DUCTS UP TO 24", AND WITH TRAPEZE HANGERS FOR DUCTS 25" AND ABOVE.
  2. ELBOWS SHALL BE SQUARE NECK (SAME IN AND OUT DIMENSION) WITH 2" DOUBLE THICKNESS TURNING VANES.
  3. OFFSETS SHALL NOT EXCEED 30 DEGREE ANGLE, AND SHALL NOT REDUCE THE FREE AREA OF THE DUCT.
  4. TRANSITIONS SHALL NOT EXCEED 1:3 RATIO (4" TRANSITION PER FOOT SINGLE SIDED TRANSITION, AND 8" PER FOOT DOUBLE SIDED TRANSITION).
  5. RECTANGULAR BRANCH CONNECTIONS SHALL BE 45 DEGREE ENTRY TYPE, WITH METAL SLEEVE AND CLINCH LOCK CONNECTION. ENTRY LENGTH SHALL BE 25% OF BRANCH DUCT WIDTH.
  6. ROUND BRANCH DUCT CONNECTIONS SHALL BE WITH "FLEXMASTER" FLDE SPIN-IN FITTINGS, WITH SCOOP, DAMPER AND HANDLE, WHERE ROUND BRANCH DIA. EQUALS VERTICAL DIM. OF DUCT USE FLEXMASTER STO OR STOCK FITTING.
  7. FLEXIBLE ROUND DUCT SHALL INCLUDE: HELIX COIL FLEXIBLE DUCTING, A 1-1/2" BLANKET INSULATION WITH MINIMUM 6.0 R VALUE, AND A ALUMINUM FOIL OUTER VAPOR BARRIER, AND BE UL-181 APPROVED, 25 OR LESS FLAME SPREAD AND 50 OR LESS SMOKE DEVELOPED. EQUAL TO "FLEXMASTER" TYPE 3M.



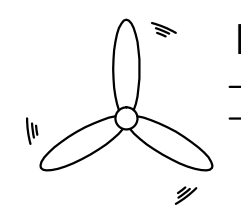
**TYPICAL DUCT**  
NO SCALE



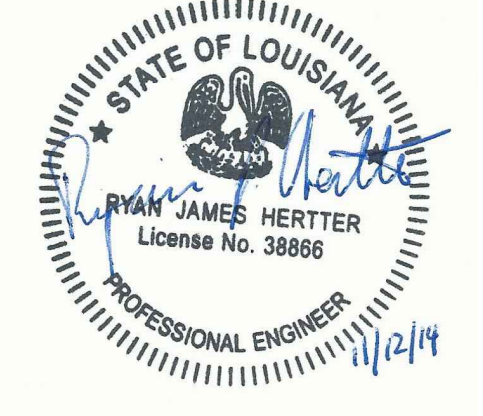
**TYPICAL ROOM EXHAUST DUCT RISER DETAIL**  
NO SCALE



Richard Molenaar  
ARCHITECT



Hertter Mechanical Services  
Ryan J. Hertter, P.E., LEED AP  
4700 WILD FERN DR  
Bartlett, TN 38135  
(662) 890-4220



PROJECT NAME:



W Mane Street West Monroe, Louisiana

SHEET TITLE:

DETAILS

PROJECT NO.  
13010

LATEST REVISION:  
△

DRAWN BY: RP  
CHECKED BY: RJH

SHEET NUMBER:

DATE:  
NOV. 12 2014

M106