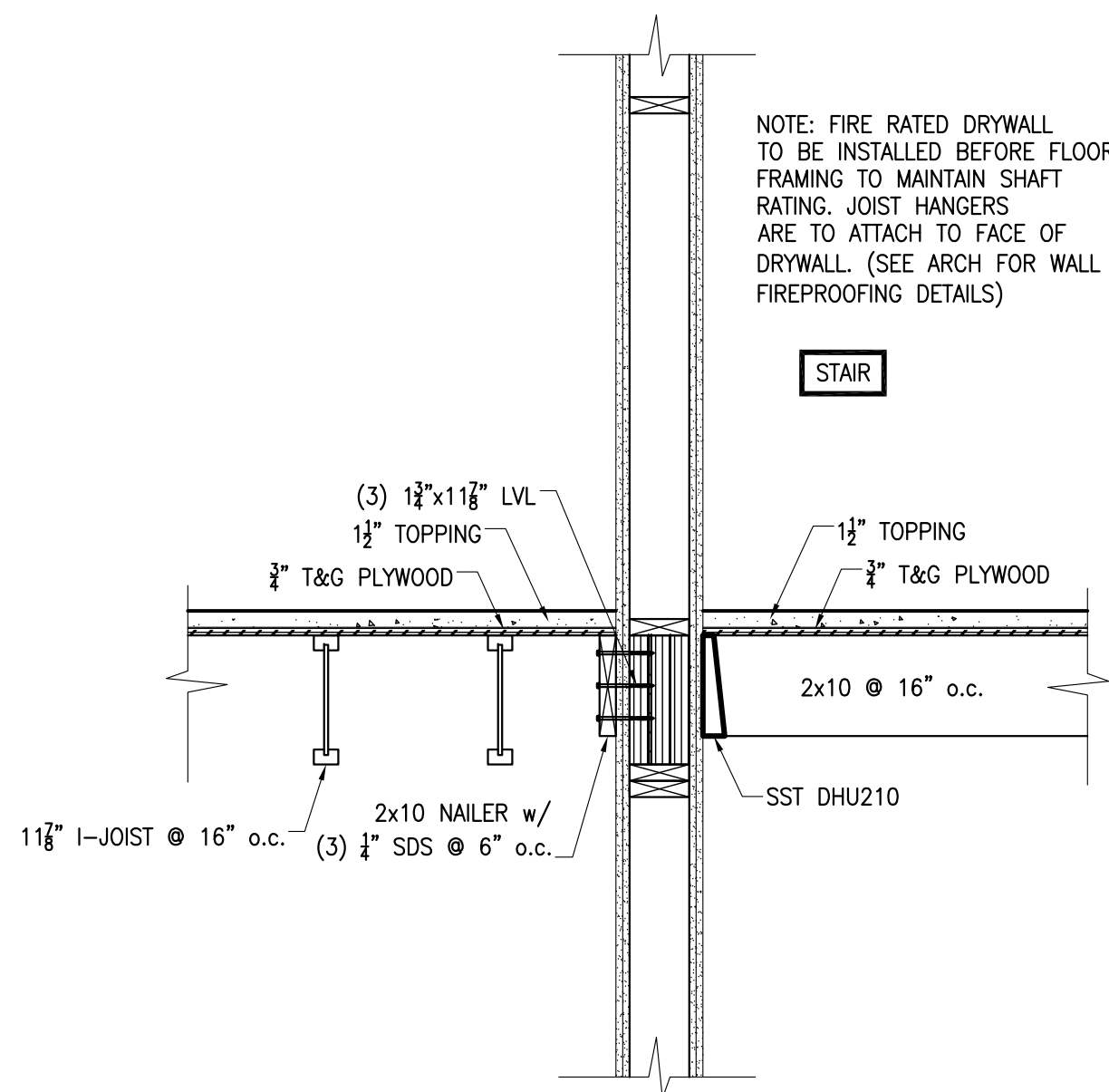
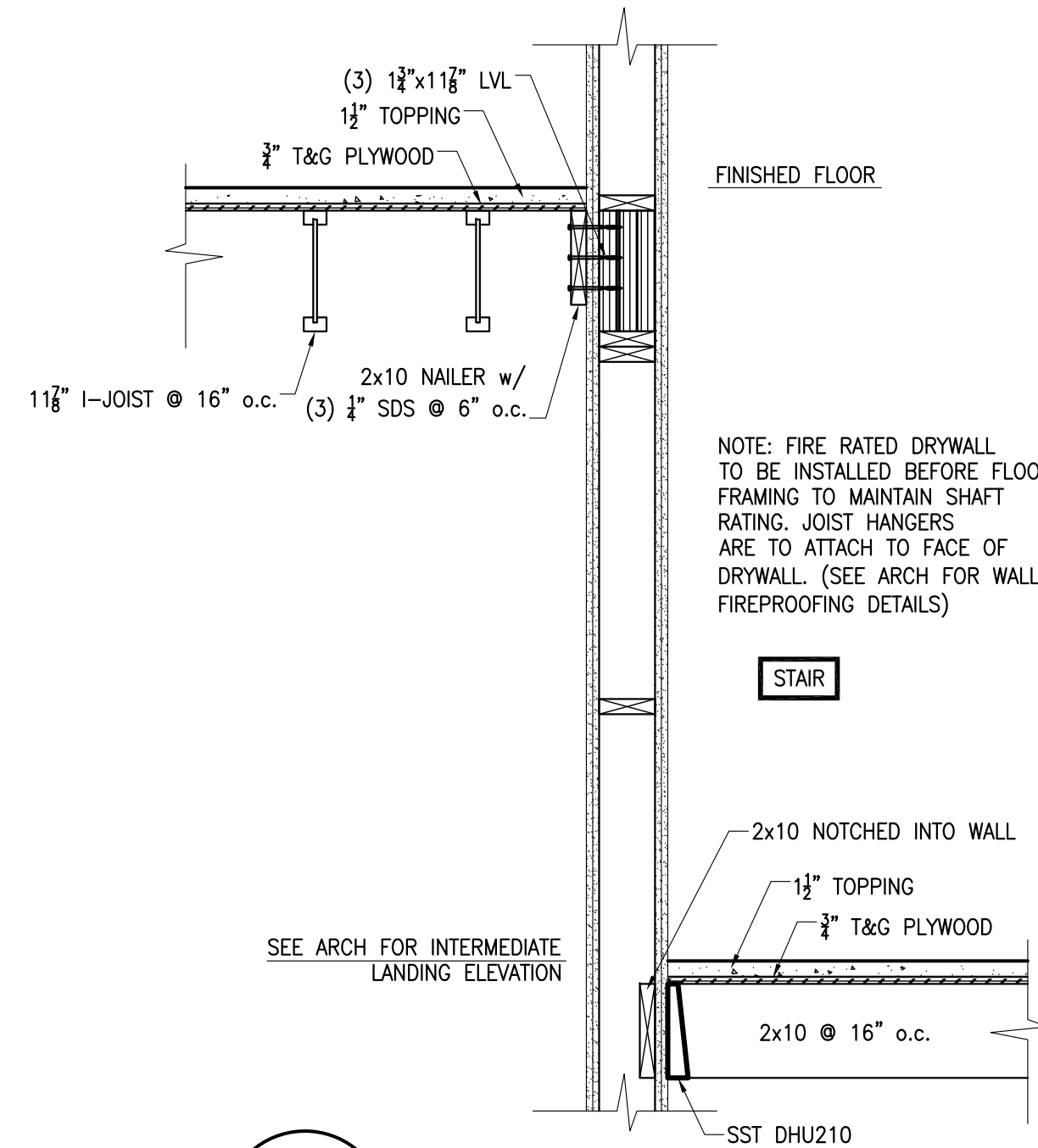


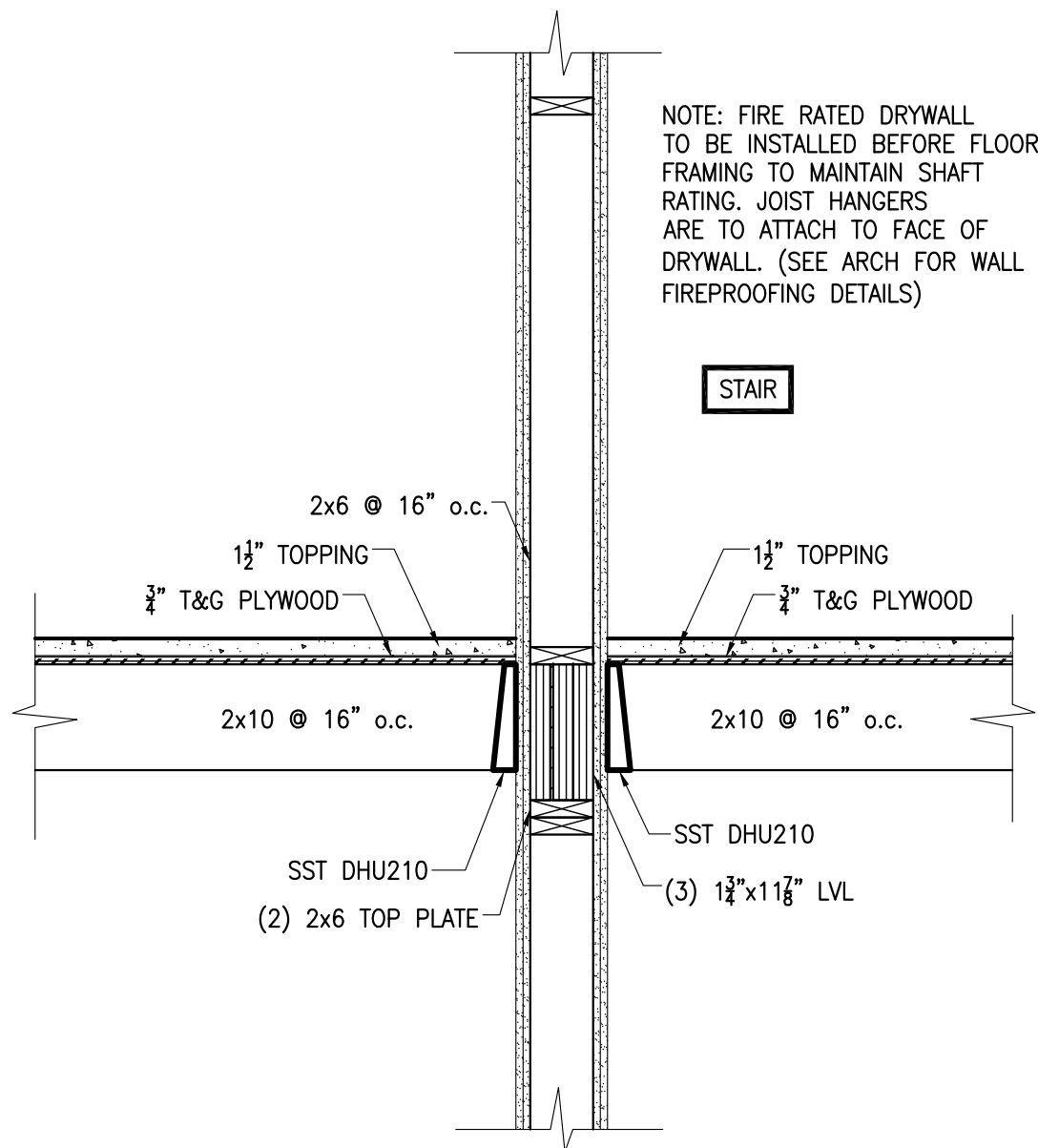
50 SECTION
S505 3/4" = 1'-0"



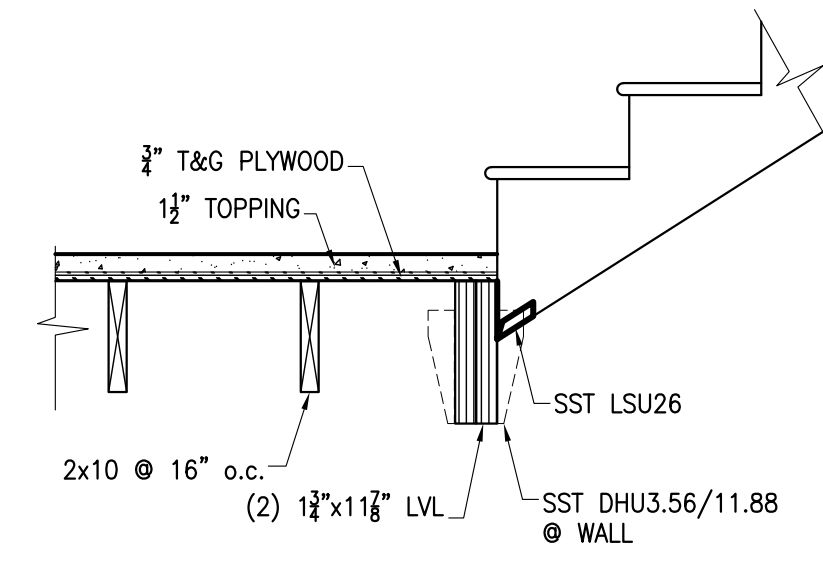
51 SECTION
S505 3/4" = 1'-0"



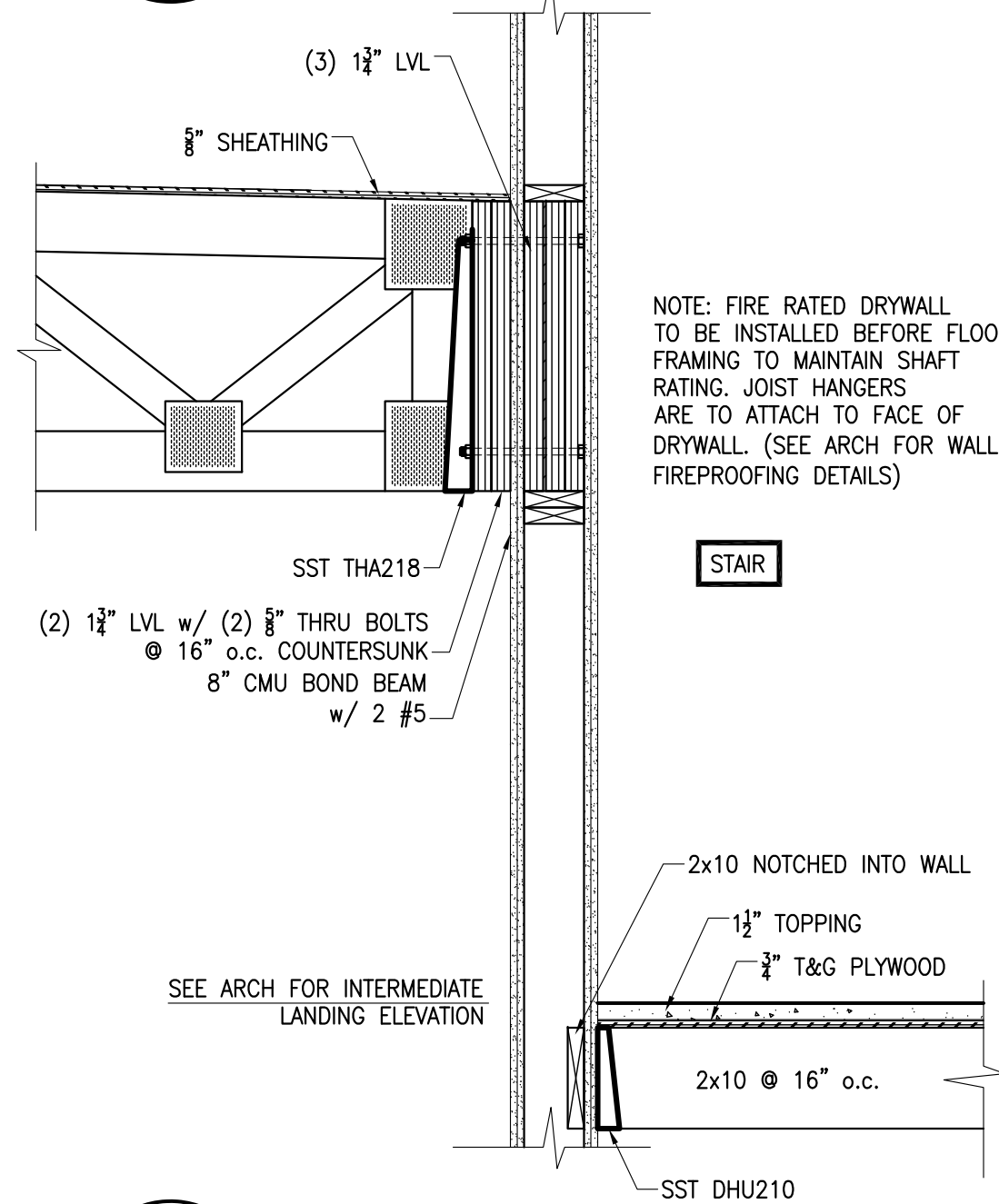
52 SECTION
S505 3/4" = 1'-0"



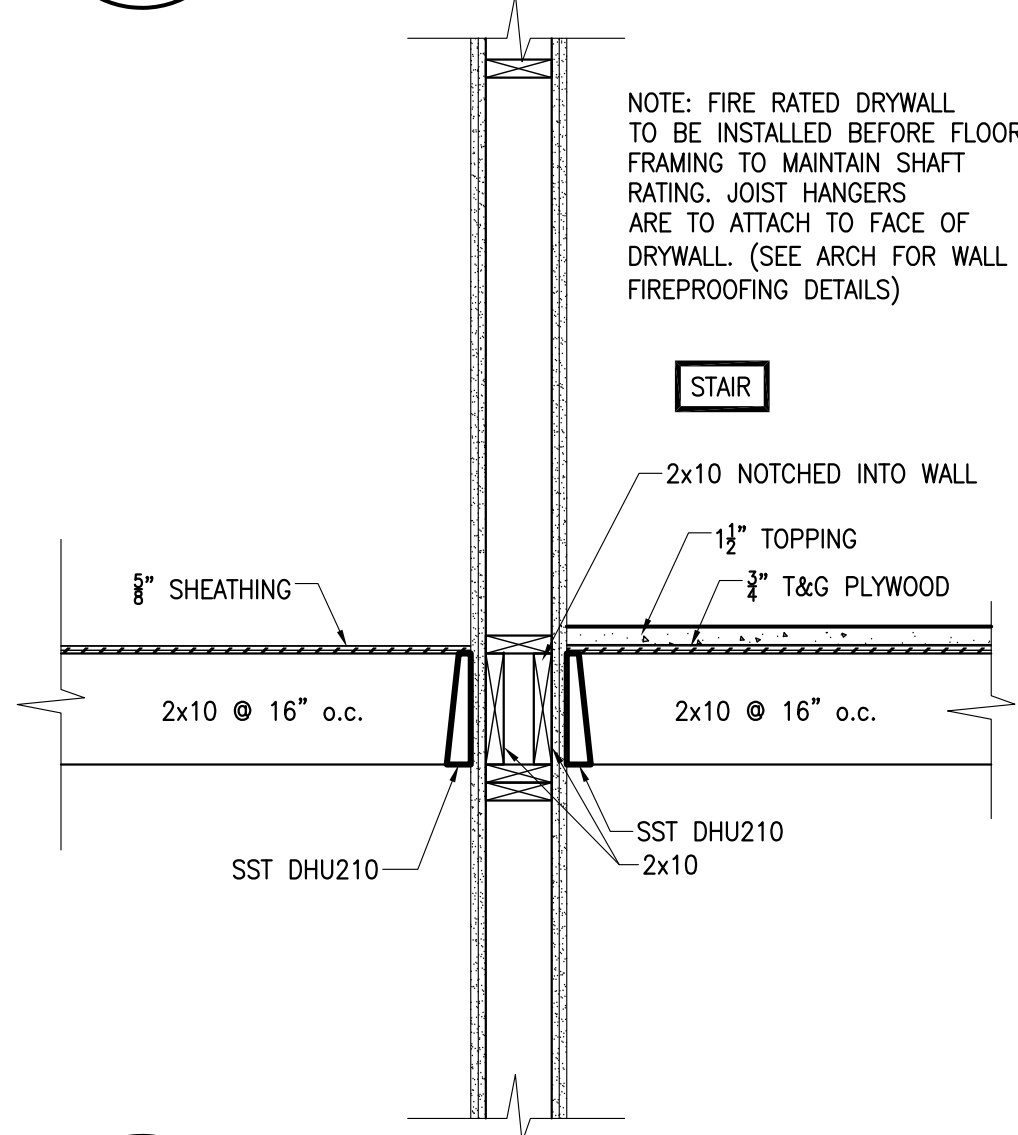
53 SECTION
S505 3/4" = 1'-0"



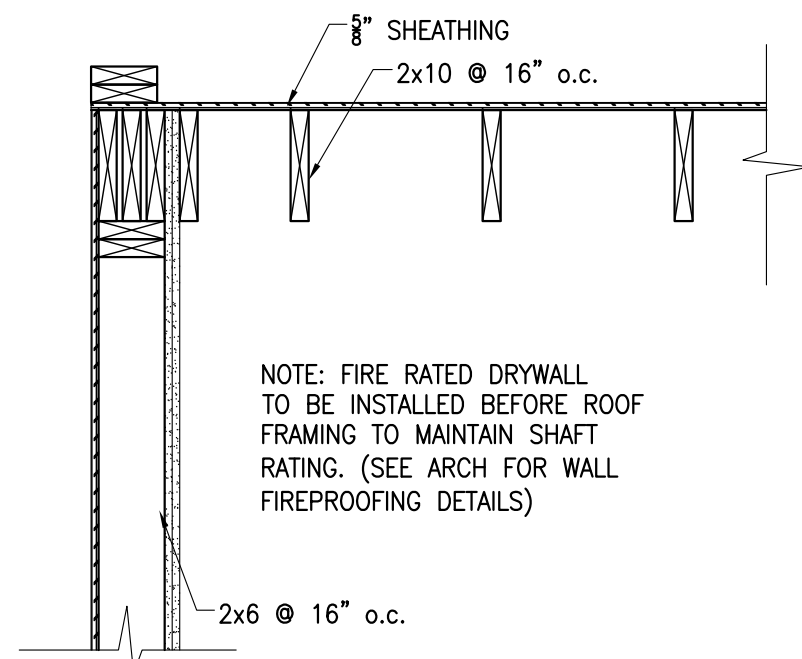
54 SECTION
S505 3/4" = 1'-0"



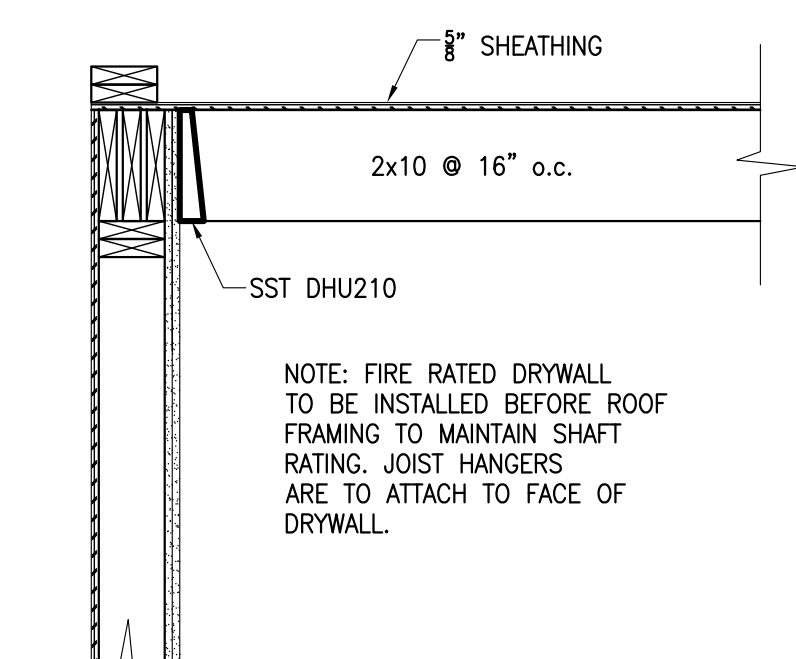
55 SECTION
S505 3/4" = 1'-0"



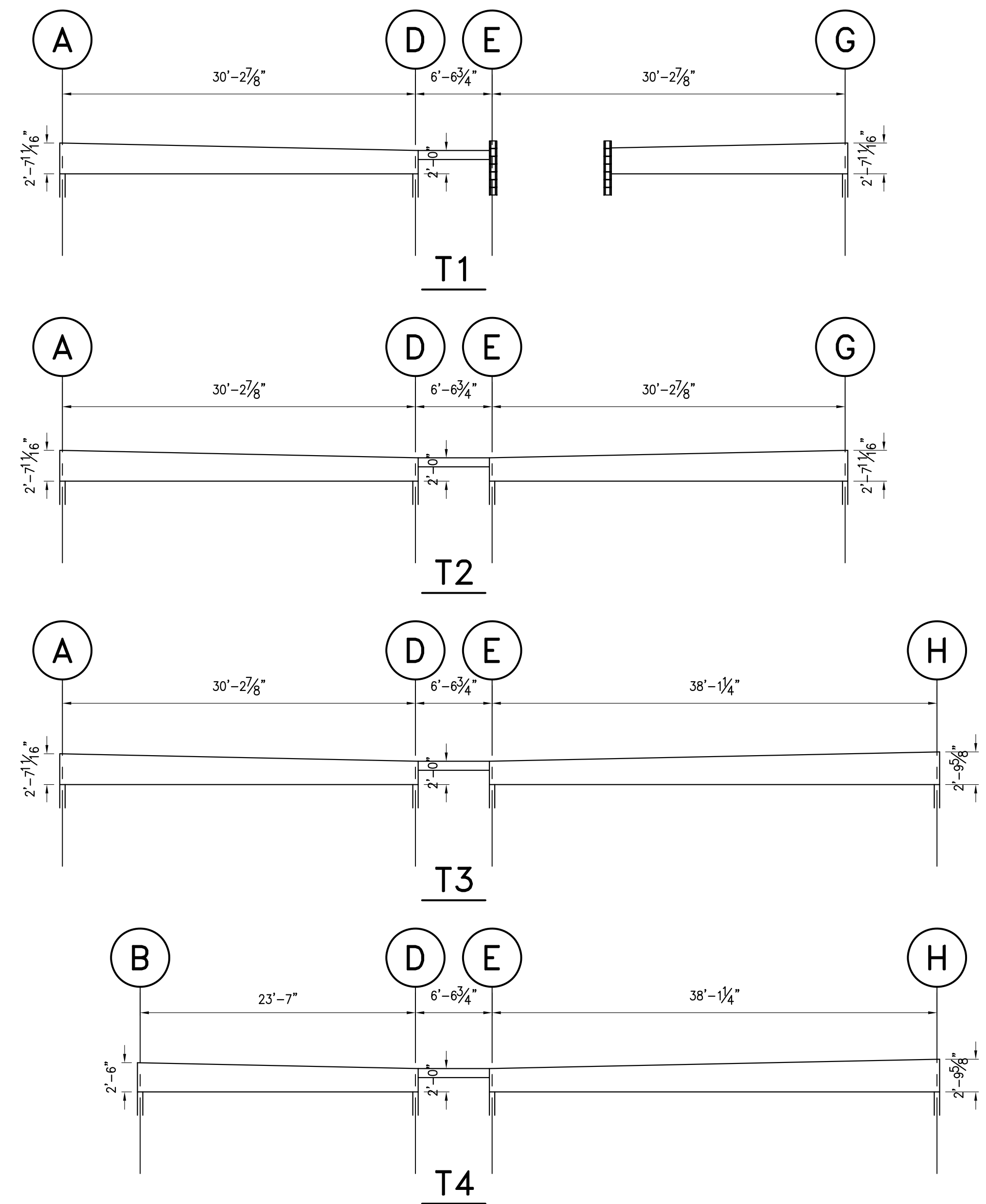
56 SECTION
S505 3/4" = 1'-0"



57 SECTION
S505 3/4" = 1'-0"

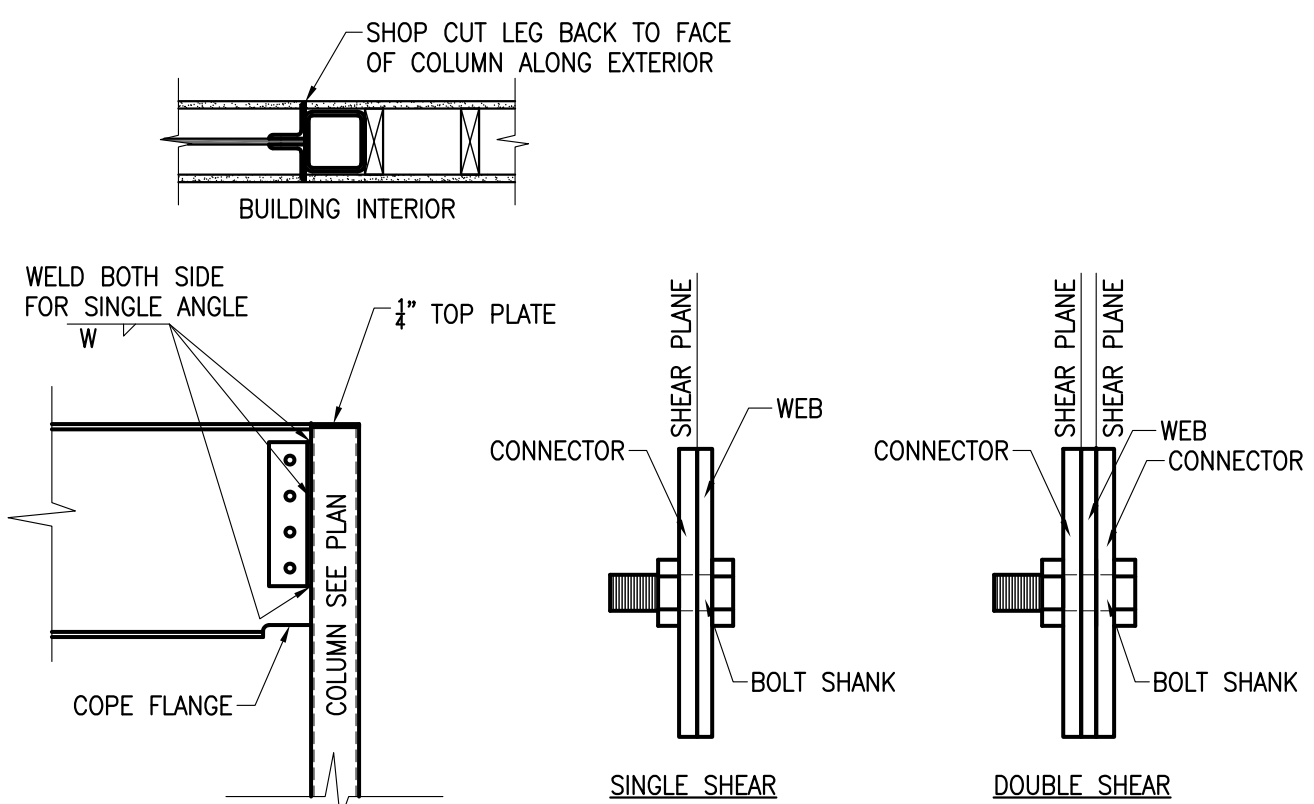


58 SECTION
S505 3/4" = 1'-0"



TRUSS PROFILES

1/8" = 1'-0"



| BEAM SIZE | CONNECTOR | BOLTS | W |
|-----------|------------------|------------------|--------|
| W10 | L3x3x6 x 5 1/2" | (2) 3/4" A325-X | 0.25 |
| W12 | L3x3x6 x 6 1/2" | (3) 3/4" A325-X | 0.25 |
| W14 | L3x3x6 x 6 1/2" | (3) 3/4" A325-X | 0.25 |
| W16 | L3x3x6 x 11 1/2" | (4) 3/4" A325-X | 0.25 |
| W18 | (2) L4x3x6 x 14" | (5) 3/4" A325-X | 0.3125 |
| W21 | (2) L4x3x6 x 17" | (6) 3/4" A325-X | 0.3125 |
| W24 | (2) L4x3x6 x 20" | (7) 3/4" A325-X | 0.3125 |
| W27 | (2) L4x3x6 x 20" | (7) 3/4" A325-X | 0.3125 |
| W30 | (2) L4x3x6 x 23" | (8) 3/4" A325-X | 0.3125 |
| W33 | (2) L4x3x6 x 26" | (9) 3/4" A325-X | 0.3125 |
| W36 | (2) L4x3x6 x 29" | (10) 3/4" A325-X | 0.3125 |

BEAM TO COLUMN CONNECTION

FOR BEAMS ALONG EXTERIOR WALL:
SINGLE SIDED CONNECTIONS PLACE ANGLES ON INTERIOR SIDE OF BEAM
DOUBLE SIDED CONNECTIONS CUT OUTSTANDING LEG OF EXTERIOR ANGLE TO FACE OF COLUMN