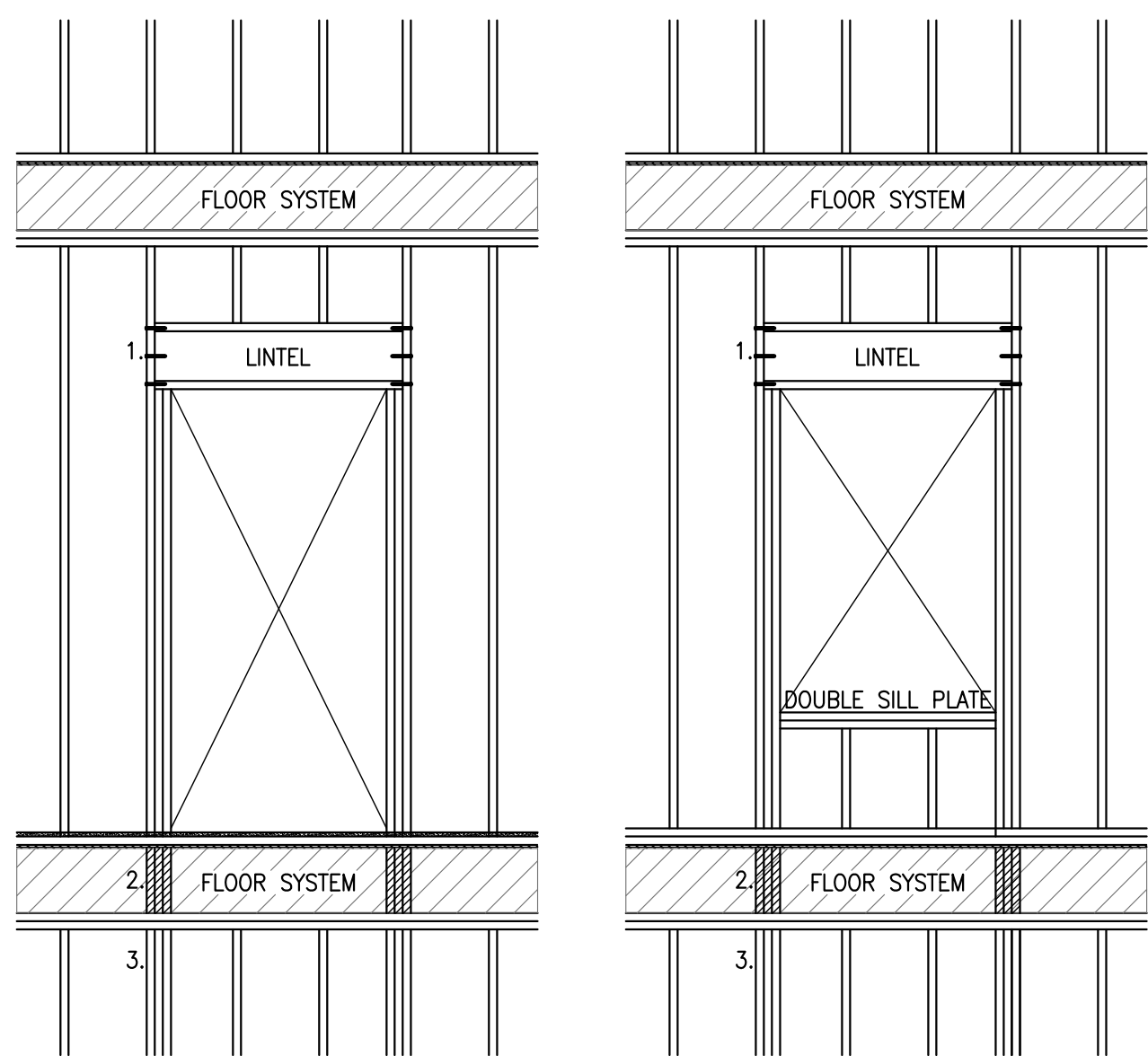


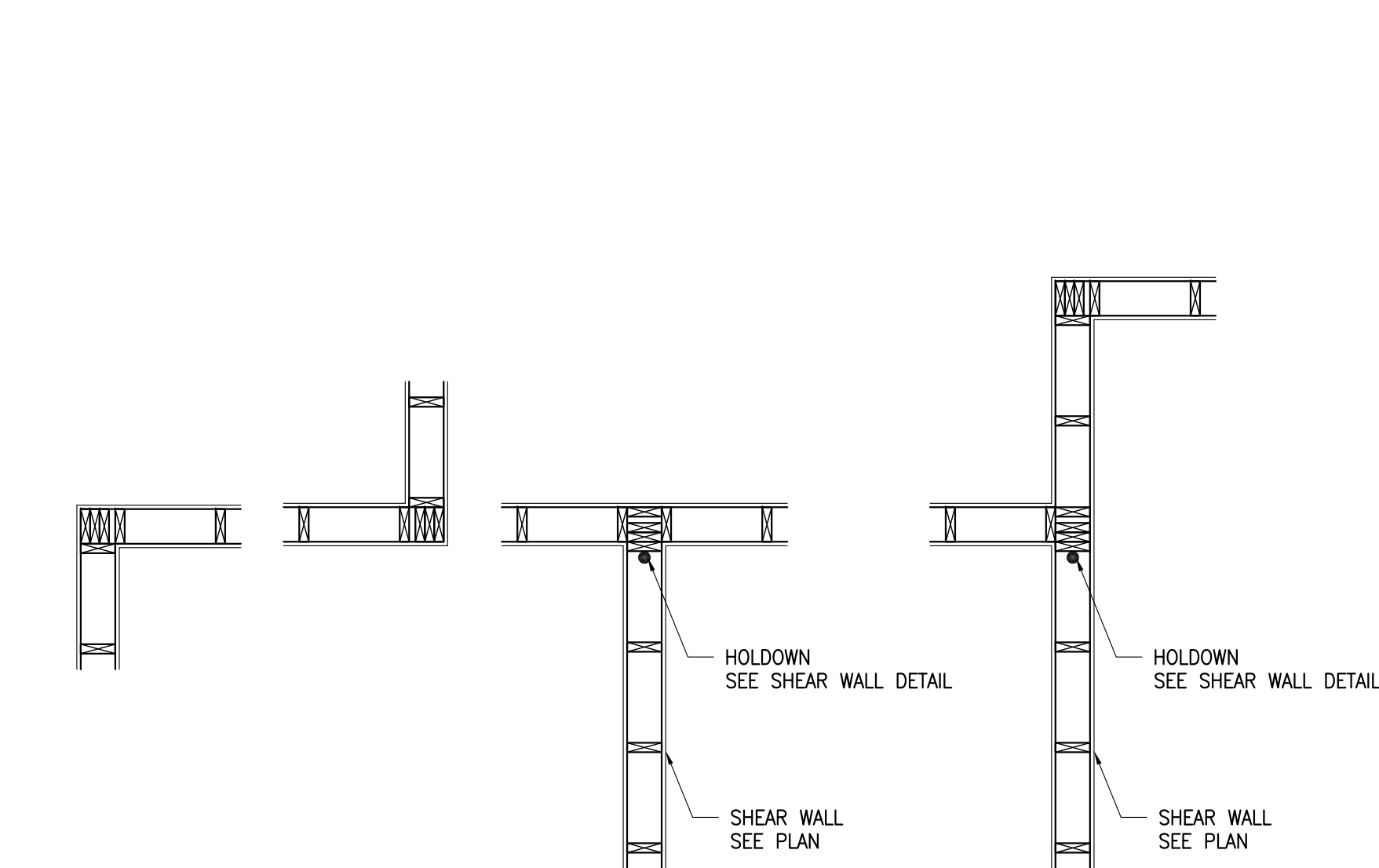
**WOOD PENETRATION DETAILS**

3" = 1'-0"



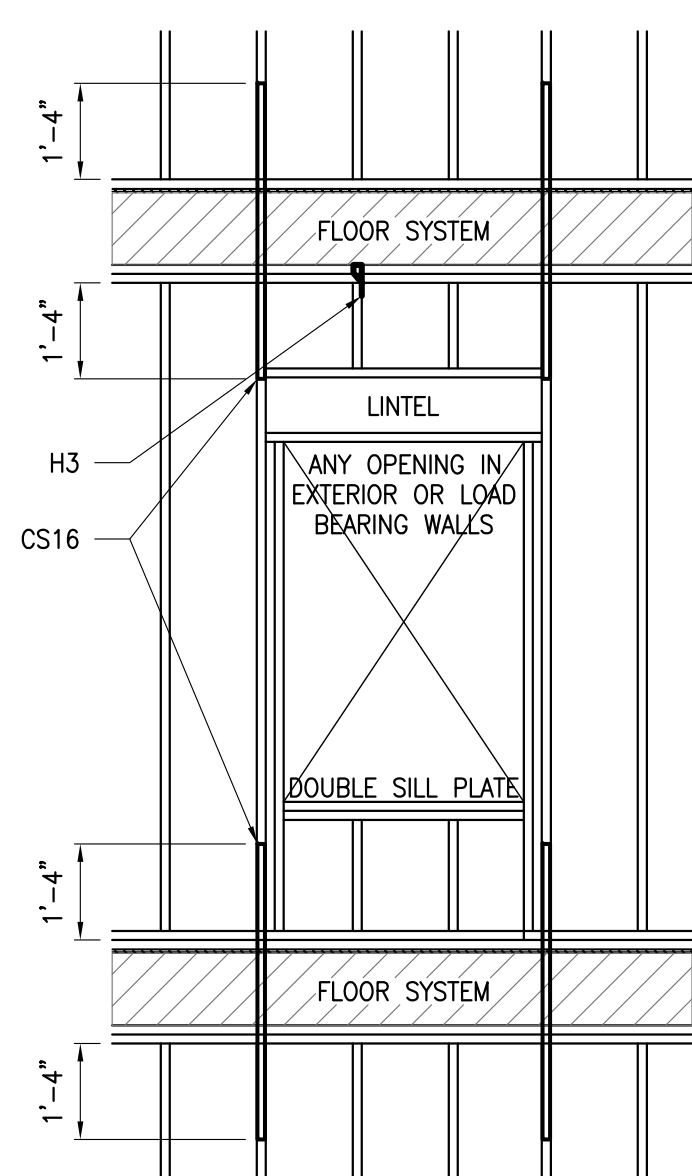
**LINTEL FRAMING**

3/8" = 1'-0"  
1. (6) 16d NAILS  
2. SOLID BLOCKING BELOW JACK AND KING STUDS  
3. STUDS TO CONTINUE TO FIRST FLOOR SLAB.



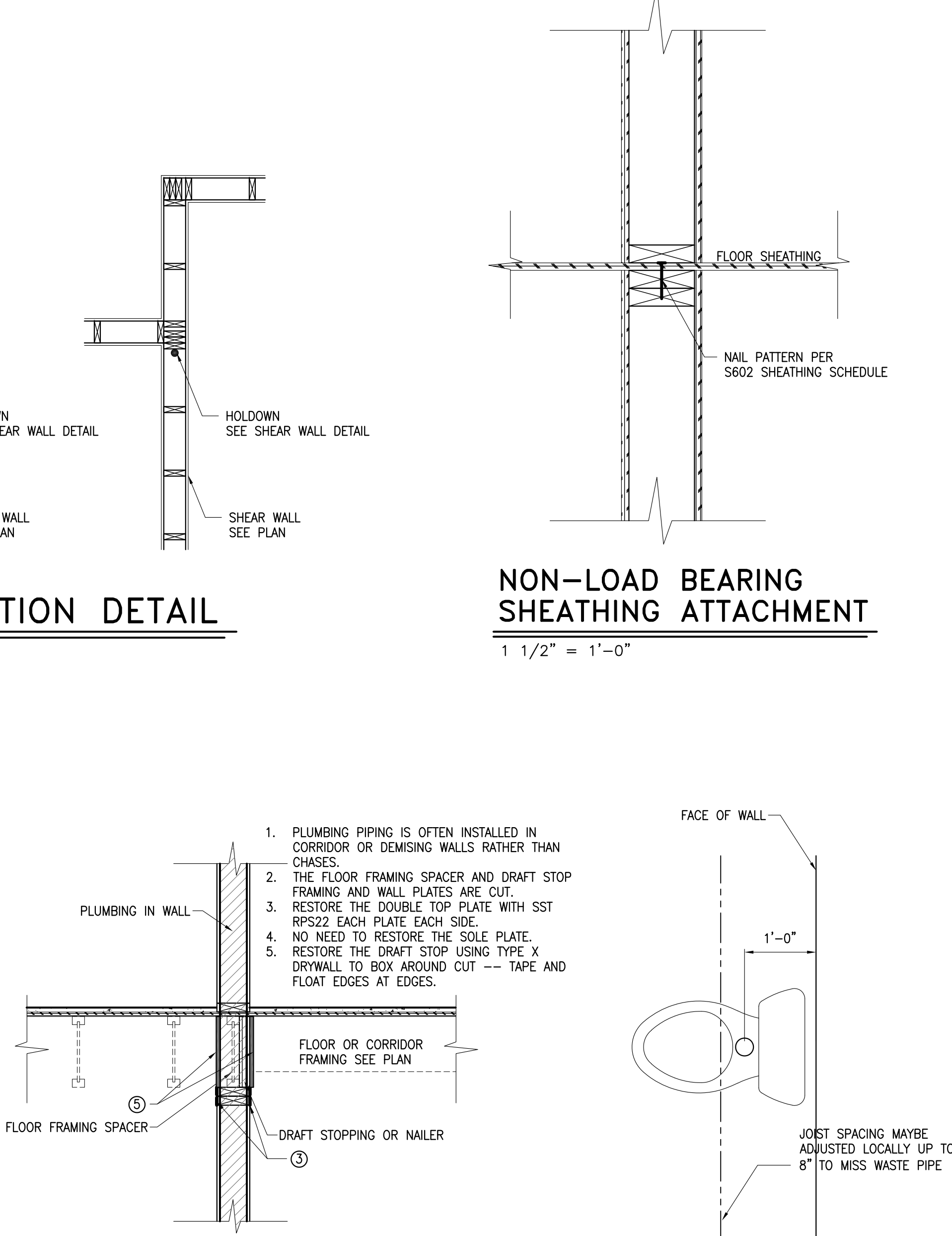
**WALL CONSTRUCTION DETAIL**

1/2" = 1'-0"



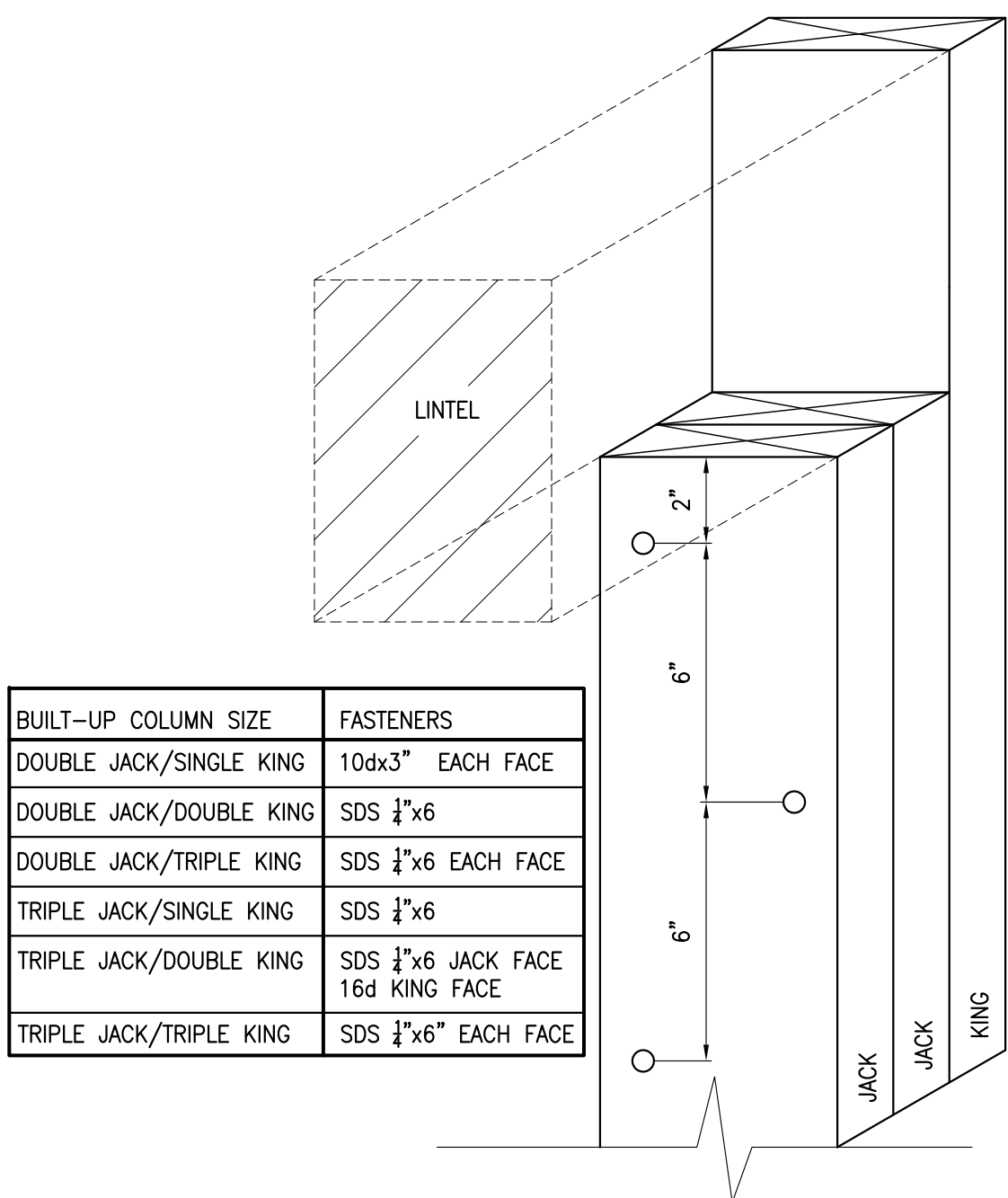
**FRAMING AROUND OPENINGS**

3/8" = 1'-0" OCCURS AT ROOF AND FLOOR BELOW AT EXTERIOR WALL



**PLUMBING IN WALL**

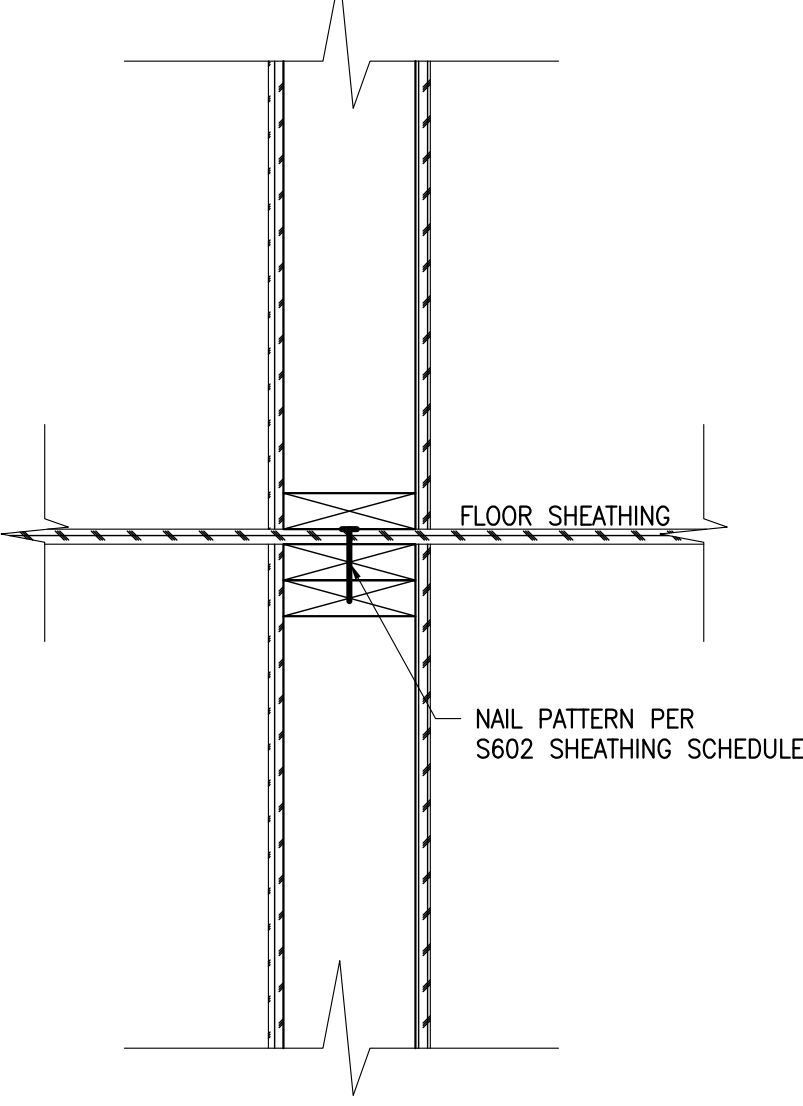
**FRAMING @ TOILET**



BUILT-UP COLUMN SIZE	FASTENERS
DOUBLE JACK/SINGLE KING	10dx3" EACH FACE
DOUBLE JACK/DOUBLE KING	SDS 1"x6
DOUBLE JACK/TRIPLE KING	SDS 1"x6 EACH FACE
TRIPLE JACK/SINGLE KING	SDS 1"x6
TRIPLE JACK/DOUBLE KING	SDS 1"x6 JACK FACE 16d KING FACE
TRIPLE JACK/TRIPLE KING	SDS 1"x6" EACH FACE

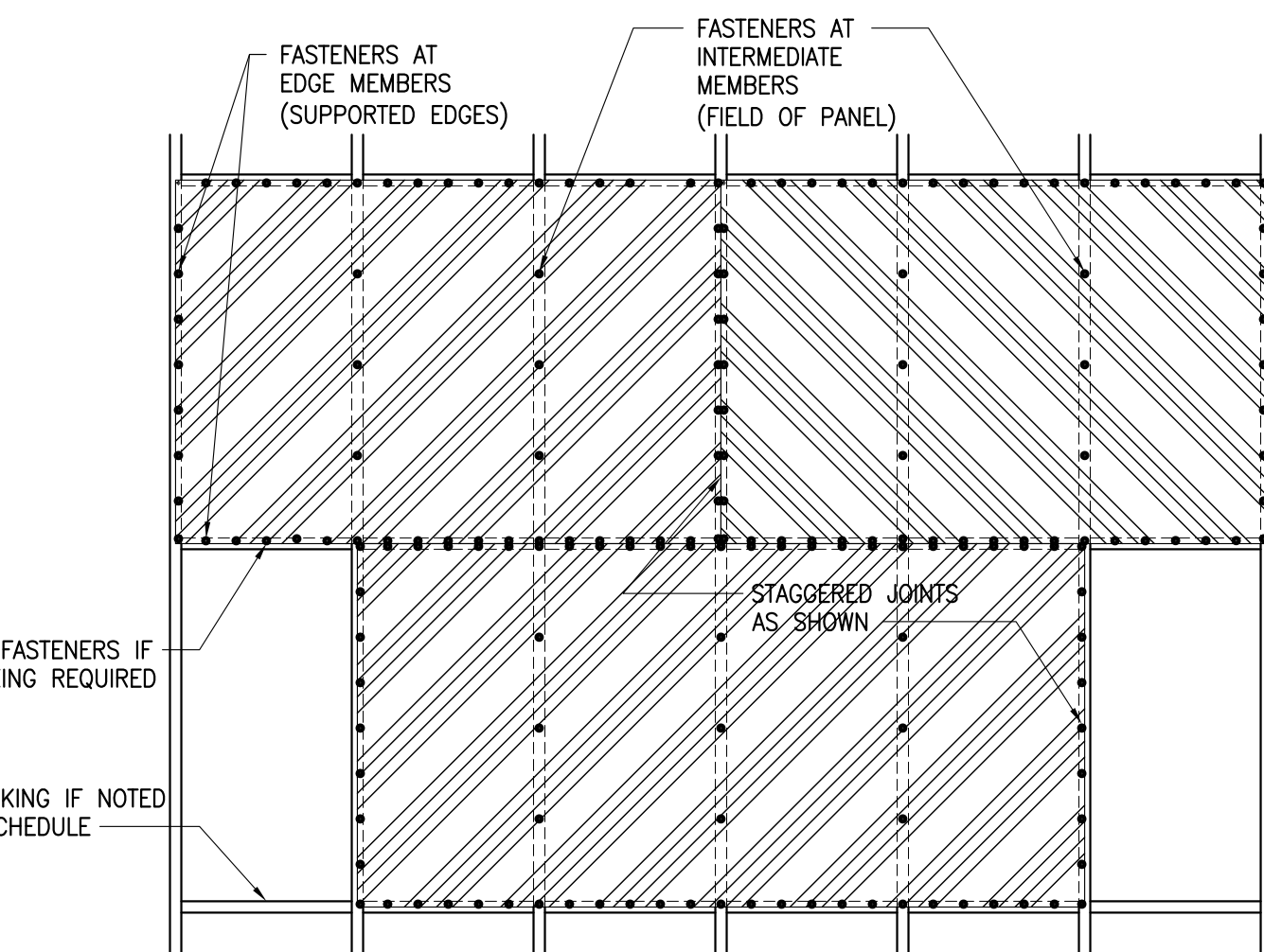
**BUILT UP POST FASTENING**

3" = 1'-0"



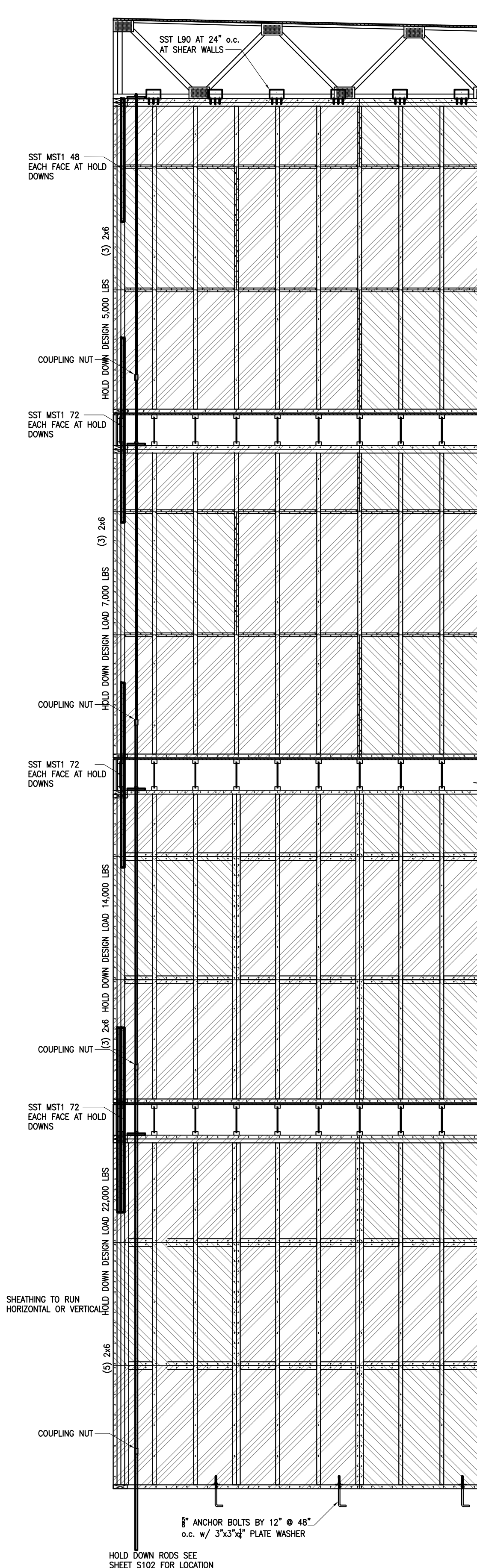
**NON-LOAD BEARING SHEATHING ATTACHMENT**

1 1/2" = 1'-0"



ROOF/FLOOR SHEATHING SCHEDULE						
LOCATION	DIAPHRAM NOM. THICKNESS	SHEATHING MATERIAL GRADE/RATING	EDGE MEMBER FASTENERS FASTENERS SPACING	INTERMEDIATE MEMBER FASTENERS FASTENERS SPACING	BLOCKED/ UNBLOCKED	
ROOF	5/8"	ADVANTECH	10d x 1 1/8" PENETRATION 6" o.c.	10d x 1 1/8" PENETRATION 12" o.c.	UNBLOCKED	
FLOOR	3/4"	ADVANTECH T&G	10d x 1 1/8" PENETRATION 6" o.c.	10d x 1 1/8" PENETRATION 12" o.c.	UNBLOCKED	

FLOOR SHEATHING TO BE GLUED (PL400) AND FASTENED FOR UNBLOCKED INSTALLATIONS EDGE FASTENERS PERPENDICULAR TO THE FRAMING AT FRAMING ONLY.



**EXTERIOR AND SHEAR WALL DETAIL**

3/8" = 1'-0"  
SUPPLIER TO DESIGN HOLD DOWN RODS AND ANCHORS BASED ON LOADS PROVIDED.