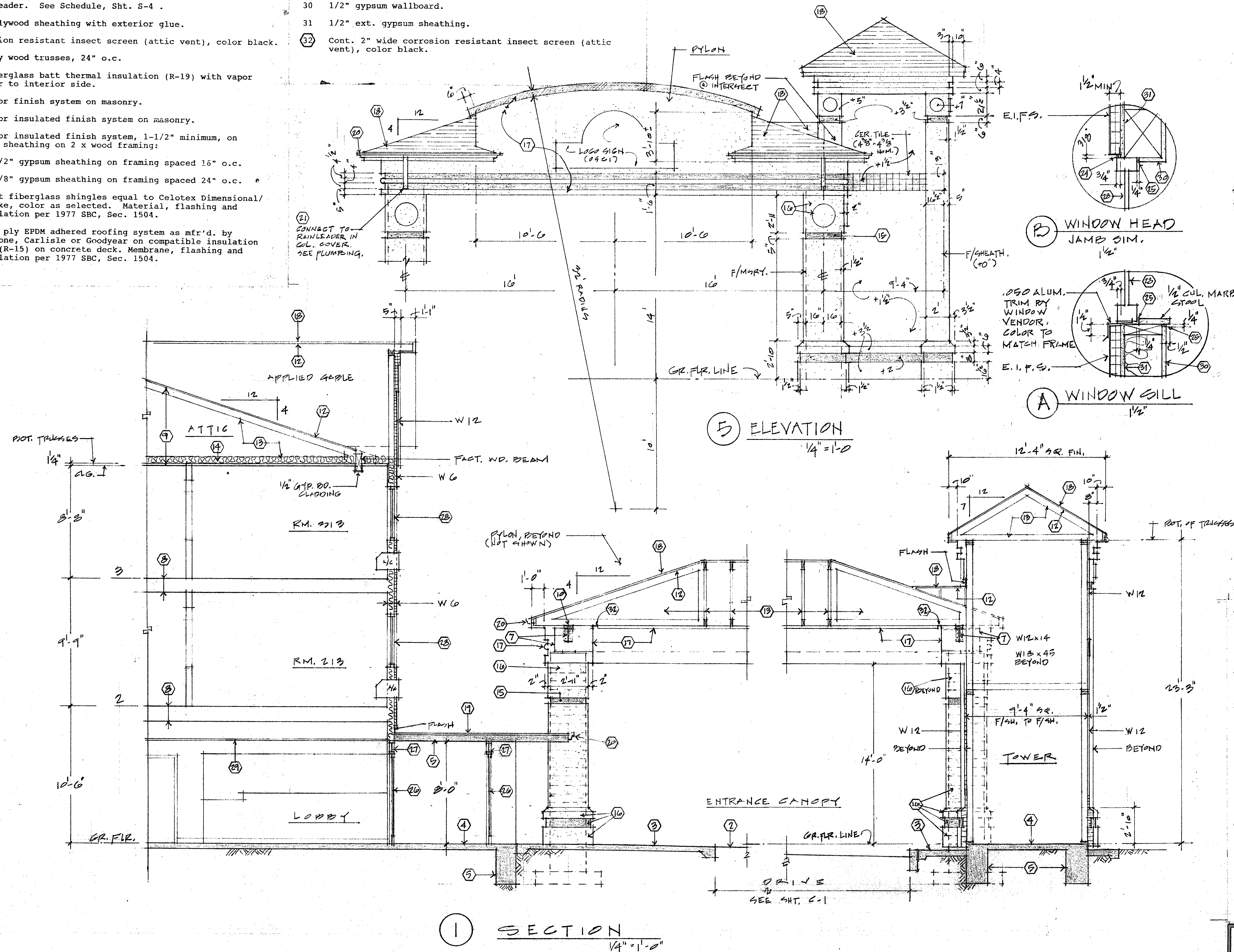


KEYNOTES

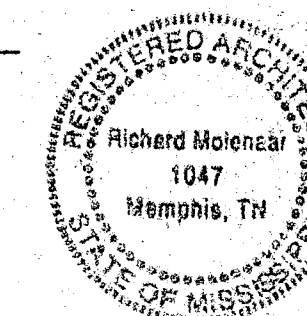
- 1 Grade.
- 2 Vehicular pavement.
- 3 Sidewalk.
- 4 Concrete floor slab-on-grade.
- 5 Reinforced concrete slab.
- 6 Concrete footing.
- 7 Steel beam.
- 8 See Note #3.
- 9 See Note #4.
- 10 2" x 6" wood plate.
- 11 Wood header. See Schedule, Sht. S-4.
- 12 5/8" plywood sheathing with exterior glue.
- 13 Corrosion resistant insect screen (attic vent), color black.
- 14 Factory wood trusses, 24" o.c.
- 15 6" fiberglass batt thermal insulation (R-19) with vapor barrier to interior side.
- 16 Exterior finish system on masonry.
- 17 Exterior insulated finish system on masonry.
- 18 Exterior insulated finish system, 1-1/2" minimum, on gypsum sheathing on 2 x wood framing:
 - * 1/2" gypsum sheathing on framing spaced 16" o.c.
 - * 5/8" gypsum sheathing on framing spaced 24" o.c.
- 19 Asphalt fiberglass shingles equal to Celotex Dimensional/25 Shake, color as selected. Material, flashing and installation per 1977 SBC, Sec. 1504.
- 20 Single ply EPDM adhered roofing system as mfr'd. by Firestone, Carlisle or Goodyear on compatible insulation board (R-15) on concrete deck. Membrane, flashing and installation per 1977 SBC, Sec. 1504.

- 20 Corrosion resistant metal ogee gutter, prefinished.
- 21 Corrosion resistant metal downspout, prefinished.
- 22 Corrosion resistant metal flashing. Prefinished color as selected.
- 23 Corrosion resistant weatherproof louver, pre-finished, with insect screen.
- 24 Sonnoberne or Pecora elastomeric joint sealant and compatible backer rod.
- 25 Acrylic latex caulk for general interior use.
- 26 Aluminum entrance.
- 27 Aluminum storefront.
- 28 Aluminum window.
- 29 Suspended ceiling.
- 30 1/2" gypsum wallboard.
- 31 1/2" ext. gypsum sheathing.
- 32 Cont. 2" wide corrosion resistant insect screen (attic vent), color black.



NOTES

1. Construction shall provide adequate resistance to the penetration of weather and moisture, reasonable durability and economy of maintenance.
2. Exterior insulated finish system acceptable manufacturers: Dryvit Systems, Inc.; ISPO, Inc.; (R-Wall); Synergy, Inc.; Sto Industries, Inc.
3. 1-hr floor/ceiling assembly (GA FILE NO. FC 5115): 5/8" type X gyp. wallbd. appl. at rt. angles to resilient furring channels w/ 1" type S drywall screws 12" OC. Wallbd and joints located midway between cont. channels and attached to additional pieces of channel 54" long w/ screws at 12" OC. Resil. furr. channels 24" OC at rt. angles to 2 x 10 wood joists at 16" OC attache with 1-1/4" Type W drywall screws. Wood joists supporting 5/8" int. O.S.B. w/ ext. glue subfloor and 1-1/2" perlite sand concrete/reinf. w/ #19 SWG galv. box. wire mesh. 3" glass fiber 0.90 pcf in joist space stapled to subfloor.
4. 1-hr roof/ceiling assembly (GA FILE NO. RC 2601): Base layer 5/8" type X gyp. wallbd. appl. at rt. angles to 2 x 10 wood joists 24" OC. Face layer 5/8" type C gyp. wallbd. appl. at rt. angles to joints through base layer w/ 1-7/8" Type S drywall screws 12" OC at joints and intermediate joints. Face layer joints offset 24" from base layer joints. 1-1/2" Type G drywall screws placed 2" back on either side of face layer end joints, 12" OC. 1/2" (min.) plywd. w/ ext. glue applied at rt. angles to top of joists w/ 8d nails. Roof covering.



RICHARD MOLENAAR
ARCHITECT

DAYS INN

PEARL, MS

SECTIONS

77006

3-25-99

A-2