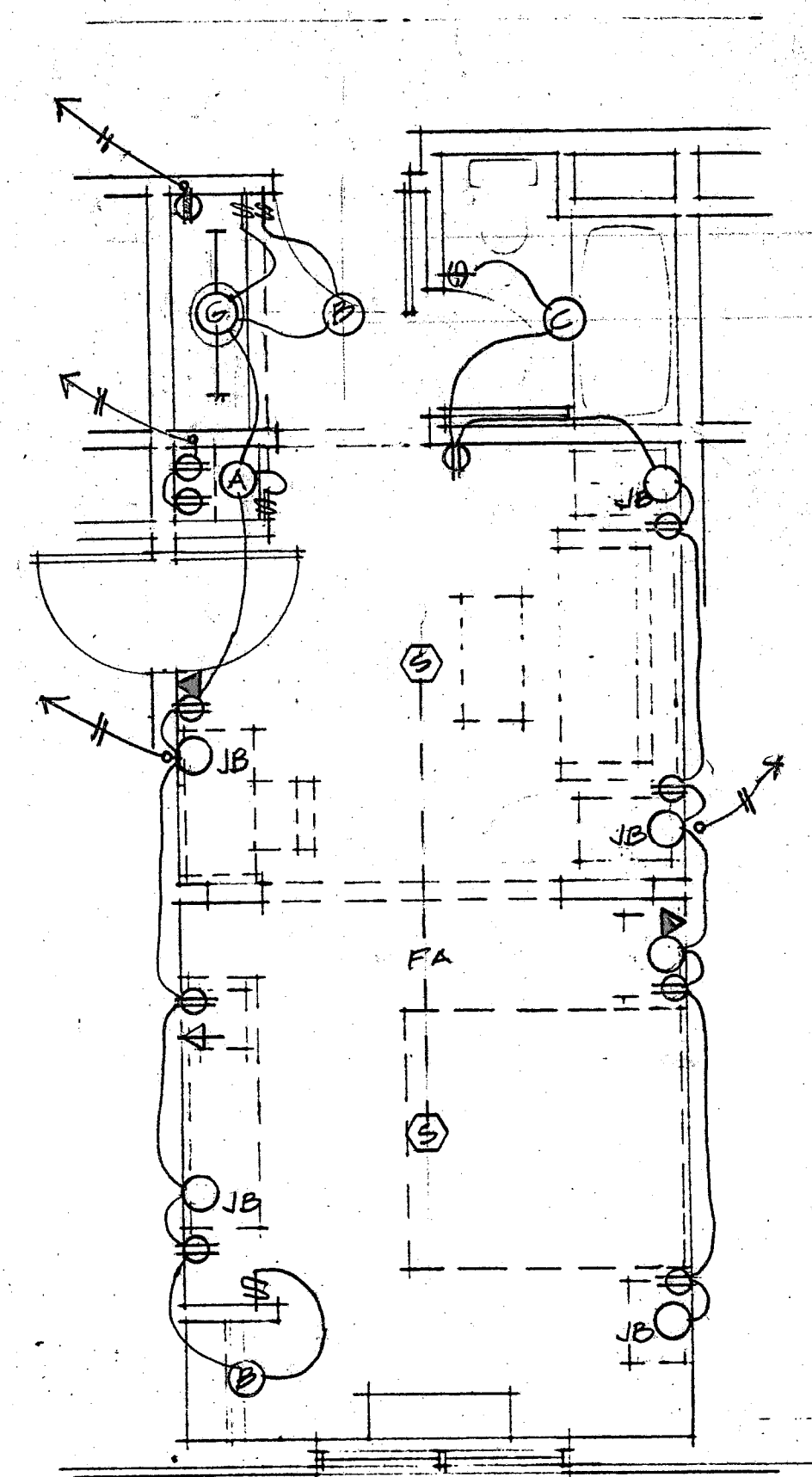
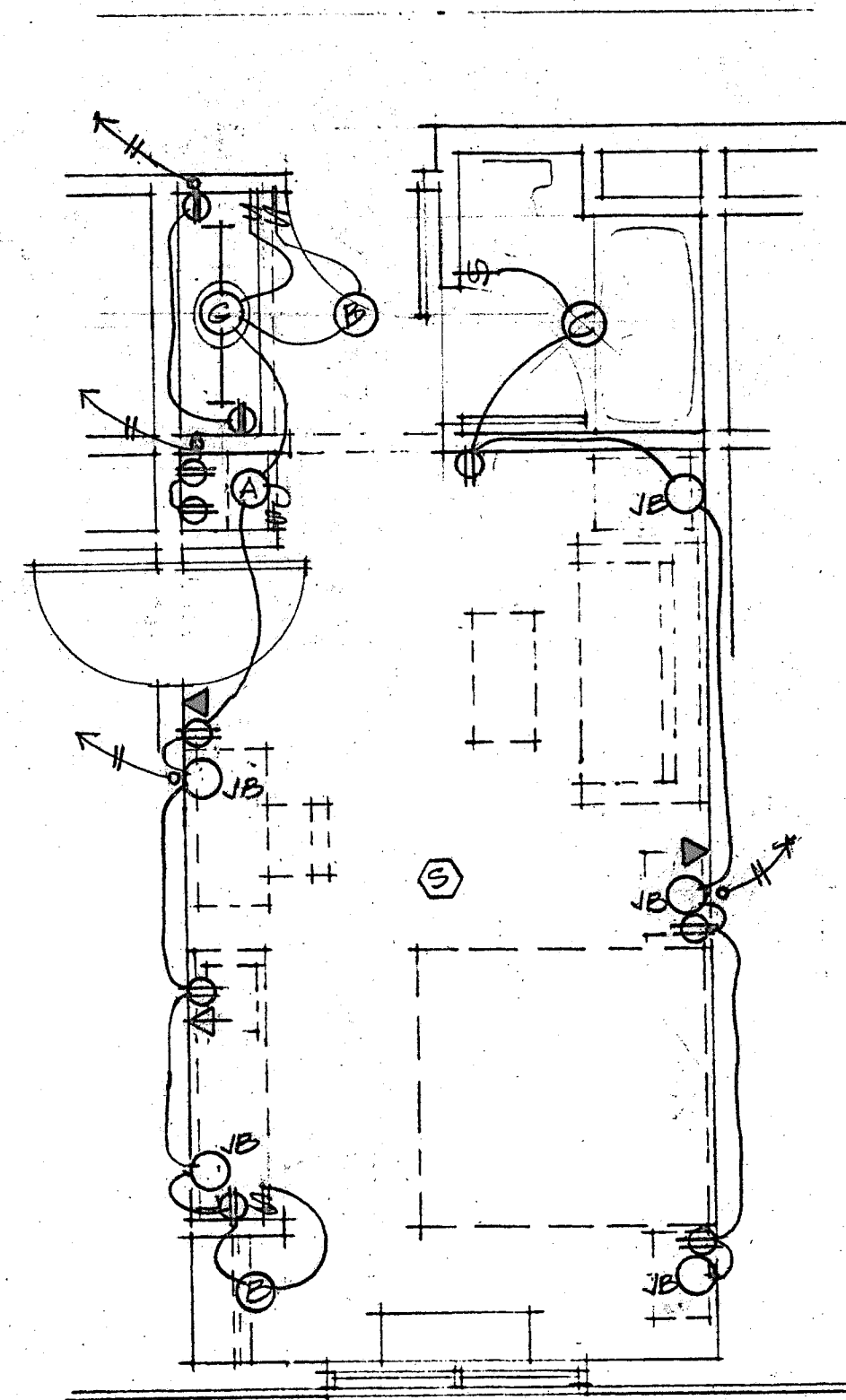


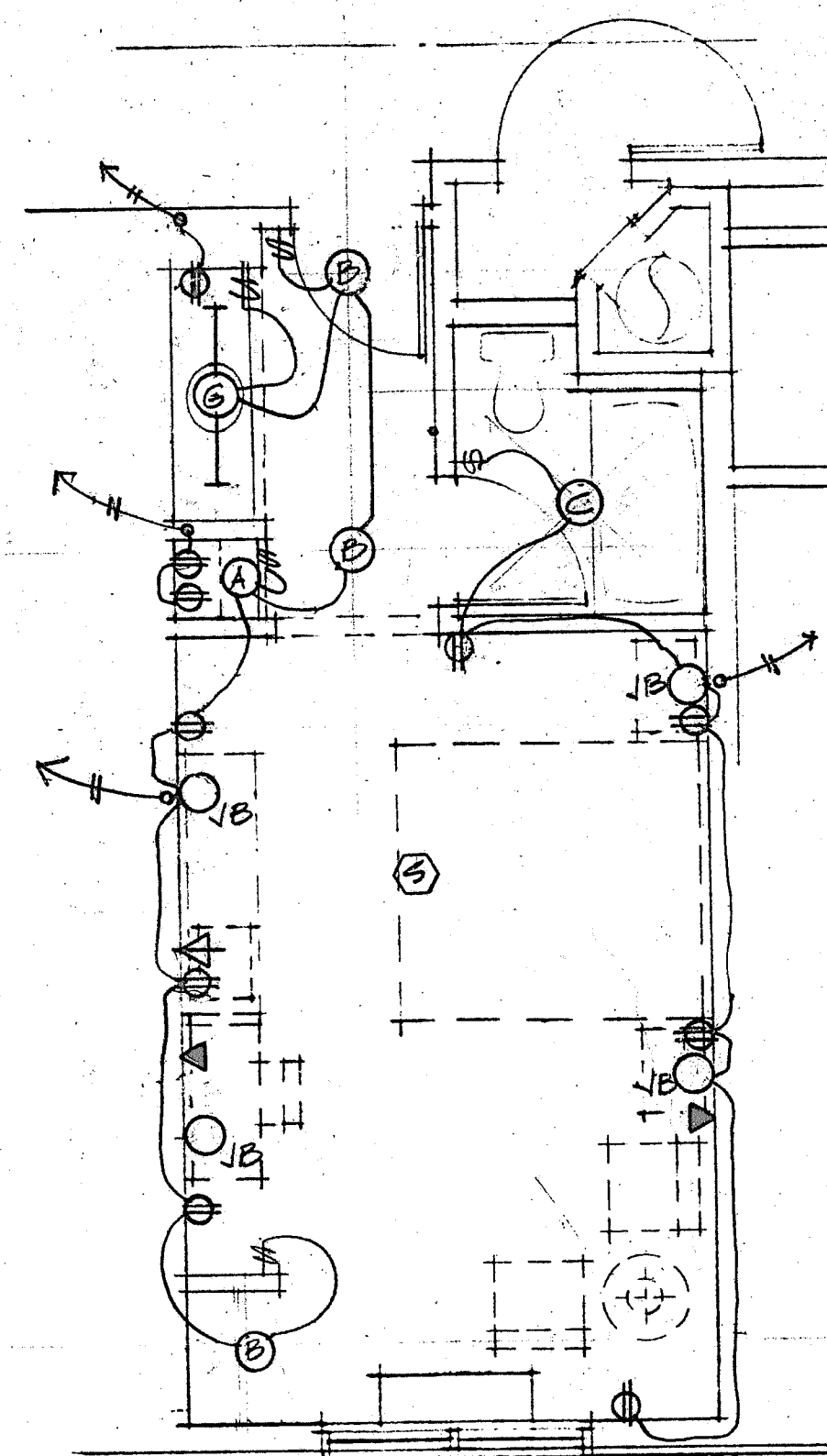
1-light



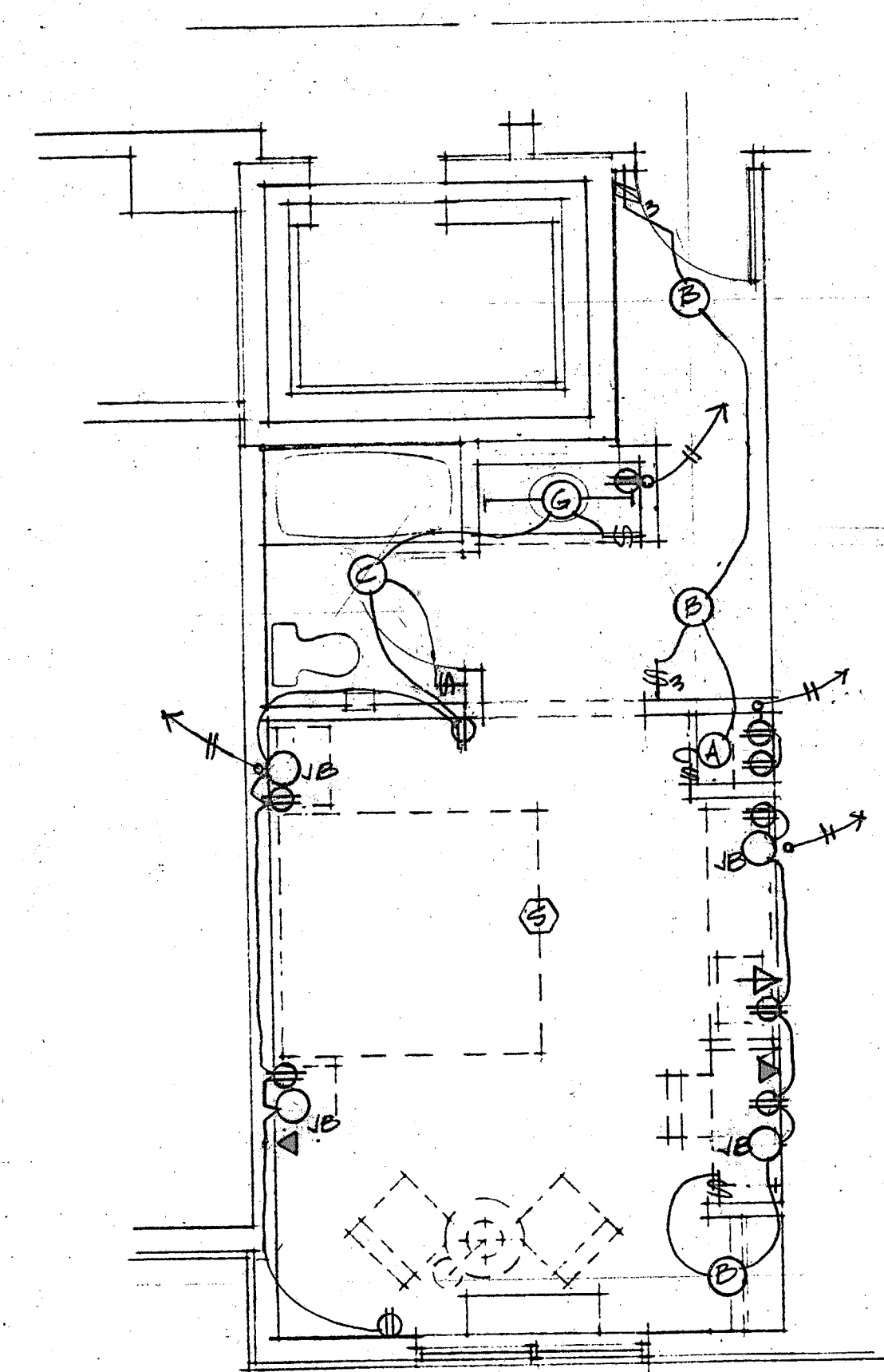
KING SUITE (KS)



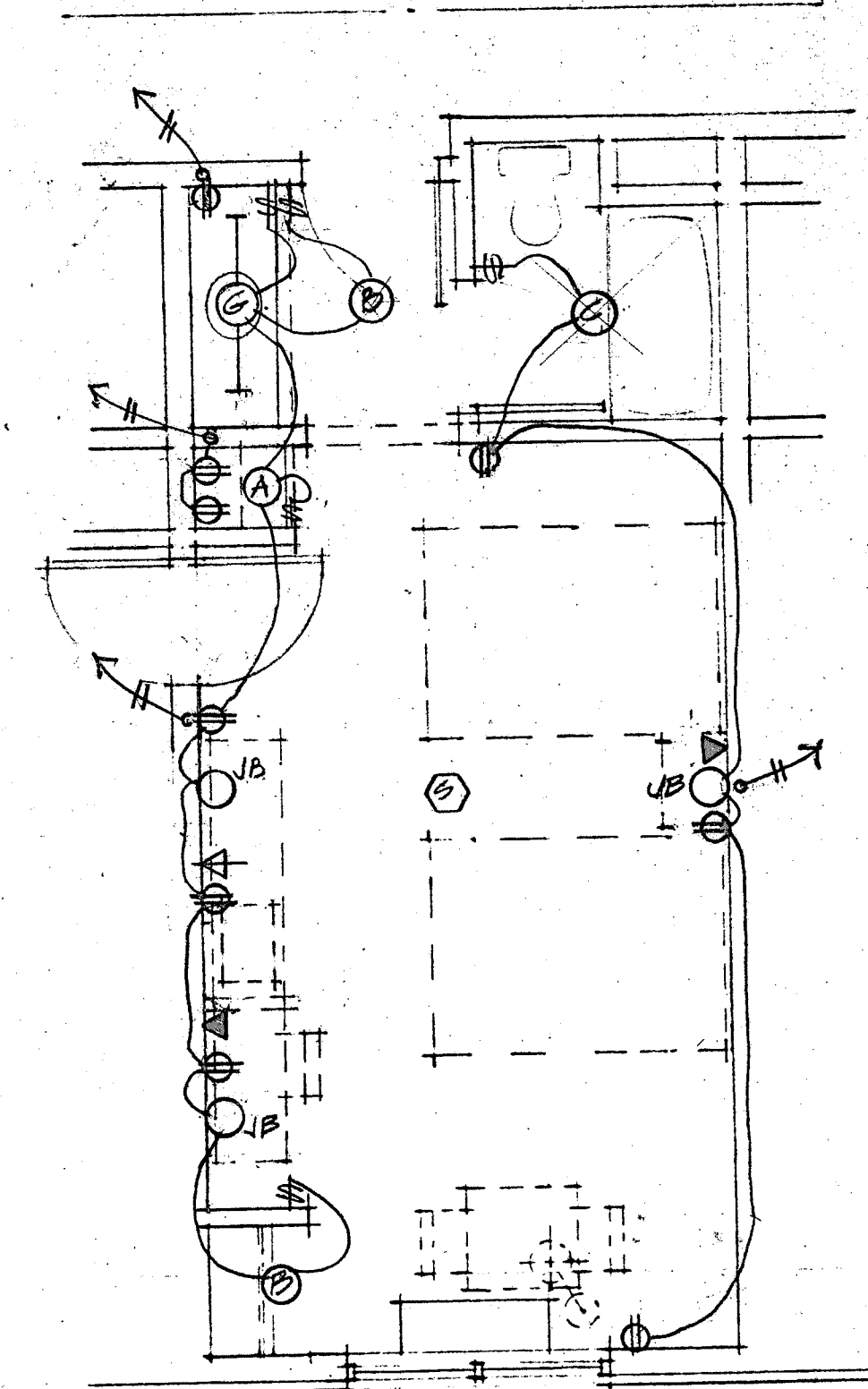
KING (K)



KING (K1)



KING (K2)



QUEEN-QUEEN (QQ)

#### NOTES

1. Verify furniture layouts prior to electrical installations. Verify outlet locations w/ Owner. Verify with Building Official that convenience outlets are allowed to be concealed behind furniture, or if they must be located above or to the side.
2. Back-to-back outlets in walls separating tenants must be staggered 12" min. in conformance with 1996 NEC.
3. Typical mounting heights AFF, unless noted:
  - A. Receptacles - 12" to center line except 44" at Bathroom vanities.
  - B. Light Switches - 48" to center line.
4. Handicap Room mounting heights AFF, unless noted:
  - A. Receptacles - 18" to center line except 44" at Bathroom vanities.
  - B. Light Switches - 48" to center line.

#### LEGEND

- Television cable outlet. Mount at same height as std. convenience outlets
- Duplex convenience outlet
- Junction box for light fixture
- GFI duplex outlet, 44" AFF
- Phone jack
- Fire alarm system smoke detector with sounder base. Activation shall sound local alarm & annunciate at Registration desk.
- Fire alarm system visual alarm. Provide in each HC & Hearing Impaired Guestrooms.
- Edwards #2004 Hotel Guestroom Annunciator. Provide in each HC Hearing Impaired Room.

RICHARD MOLENAAR  
ARCHITECT

DAYS INN

PEARL, MS

TYP. GUEST ROOMS

1/4" = 1'-0"

97006

3-25-99

E-5